



Architecture Billings Index (ABI)

February 2023

The Architecture Billings Index (ABI) is a diffusion index derived from the monthly Work-on-the-Boards survey, conducted by the AIA Economics & Market Research Group. The ABI serves as a leading economic indicator that leads nonresidential construction activity by approximately 9-12 months. The survey panel asks participants whether their billings increased, decreased, or stayed the same in the month that just ended. According to the proportion of respondents choosing each option, a score is generated, which represents an index value for each month. An index score of 50 represents no change in firm billings from the previous month, a score above 50 indicates an increase in firm billings from the previous month, and a score below 50 indicates a decline in firm billings from the previous month.

*All graphs represent data from February 2022–February 2023.

ABI

National Regional Sector Practice

National

Architecture firm billings continued to decline in February

Graphs represent data from February 2022–February 2023.

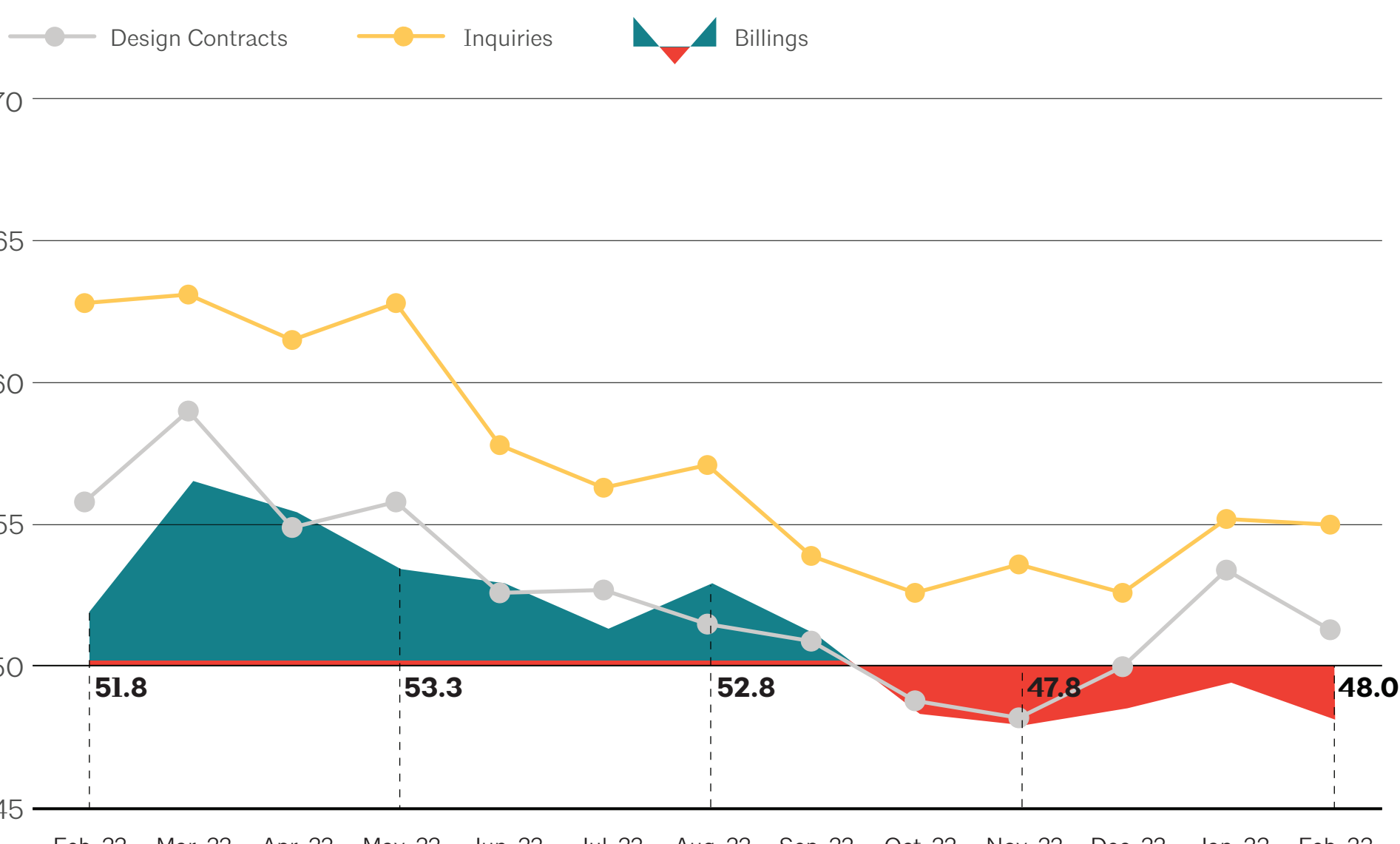


Above 50



Below 50

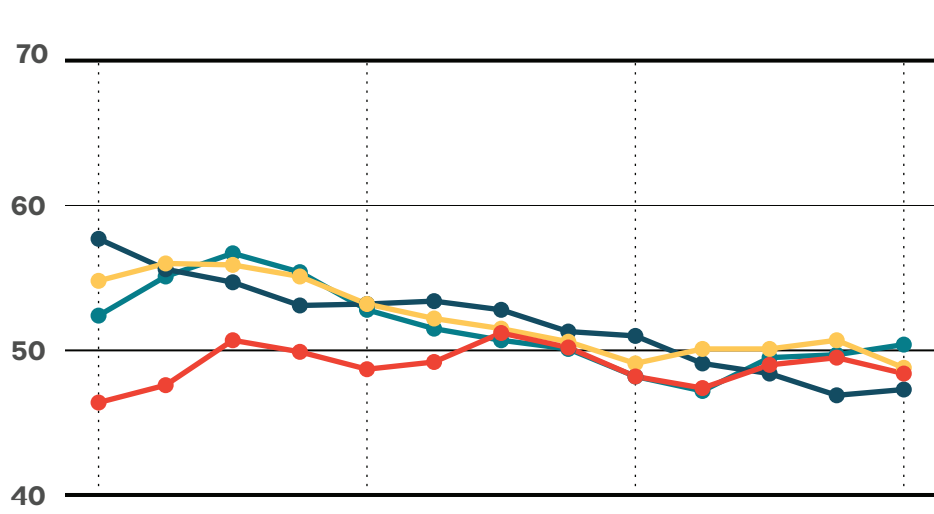
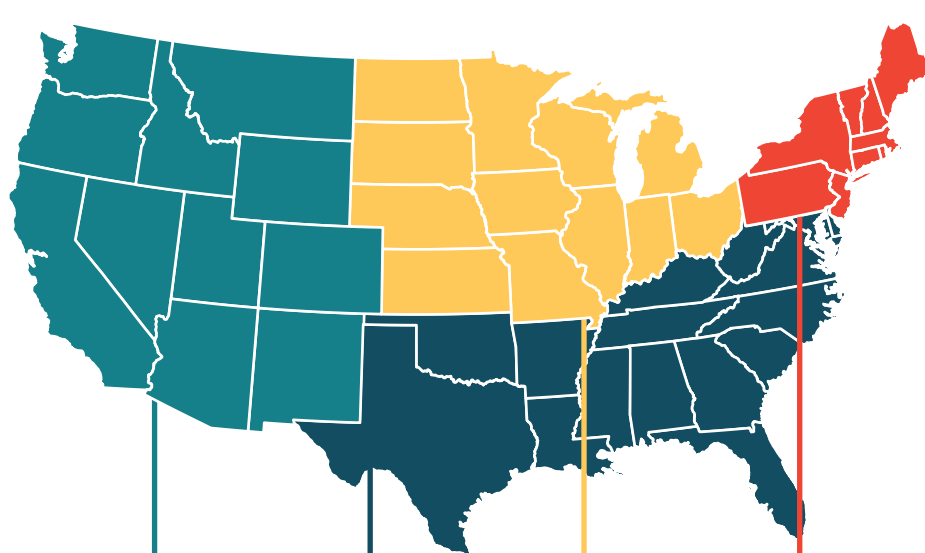
No change from previous period



Regional

Only firms located in the West saw billings growth

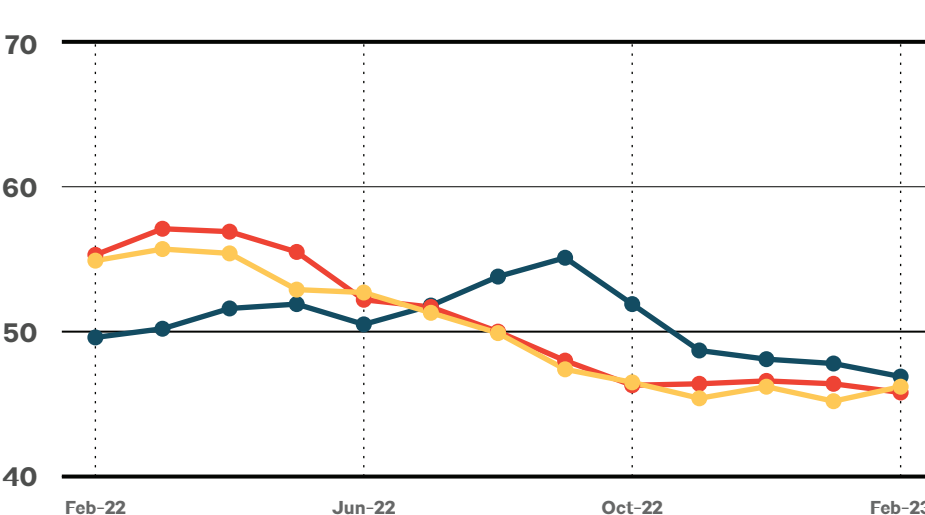
Graphs represent data from February 2022–February 2023 across the four regions. 50 represents the diffusion center. A score of 50 equals no change from the previous month. Above 50 shows increase; Below 50 shows decrease. 3-month moving average.



Sector

Business conditions soften at firms of all specializations

Graphs represent data from February 2022–February 2023 across the three sectors. 50 represents the diffusion center. A score of 50 equals no change from the previous month. Above 50 shows increase; Below 50 shows decrease. 3-month moving average.



Practice

After seeing robust compensation growth in 2022, more moderate gains are expected in 2023

units: % of firms indicating how compensation for architectural positions at their firm changed from 2021 to 2022, and is expected to change from 2022 to 2023

