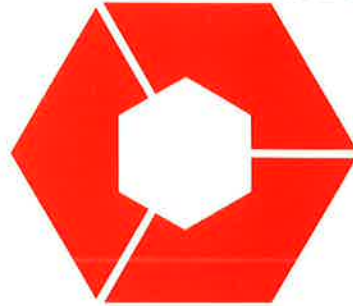


**CORE
DESIGN
GROUP**



**ARCHITECTS
ENGINEERS**

*CORE DESIGN GROUP
THE RATIONALE*



Traditionally, architects and engineers have practiced their professions independent of each other, using each other's services only when absolutely necessary and not always to the best advantage of the client. These two professions are, however, inter-dependent, and with the increasing emphasis on economy and efficiency it has become obvious to us that a fully integrated approach to the design of buildings and related projects is necessary if our clients are to receive best value.

For the past several years, the principals of Core Design Group have been using the "team approach" to projects. Under this system we have seconded architects and engineers from their parent organizations and established them in a "project office." In most cases this is the office of the principal consultant on the project. While this approach has been highly successful, it has meant uprooting project personnel from their home offices on a temporary basis, and returning them periodically during the slow periods of a project. The benefits of the team approach have however resulted in higher efficiency of design, reduced overall costs to our clients, and far improved project control.

The establishment of Core Design Group, completes the process of an integrated approach by bringing together competent and experienced architects, engineers and management personnel permanently in a single multi-disciplined consulting organization. Core is a professional architectural and engineering firm striving for excellence in standards of performance and service.

**CORE
DESIGN
GROUP**



**ARCHITECTS
ENGINEERS**

**CORE
DESIGN
GROUP**



**ARCHITECTS
ENGINEERS**

Keith L. Graham MRAIC

Core Design Group
Suite 212, Duke Tower
5251 Duke Street
Halifax, Nova Scotia
B3J 1N9

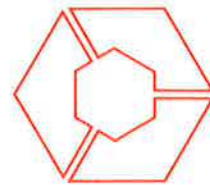
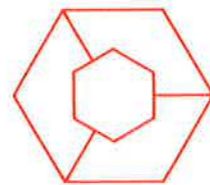
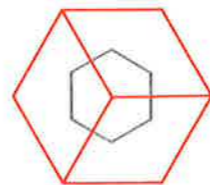
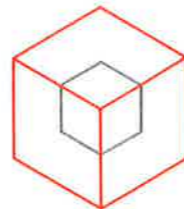
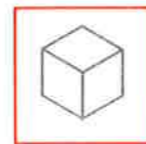
(902) 422-1486
Telex 019-21594

Keith L. Graham, Architect, Inc.
and WBA Engineering Services Limited
are pleased to announce the establishment
of Core Design Group.

Core Design Group
Suite 212, Duke Tower
5251 Duke Street
Halifax, Nova Scotia
B3J 1N9

(902) 422-1486
Telex 019-21594

*A multi-disciplinary
Architectural and
Engineering consulting firm.*

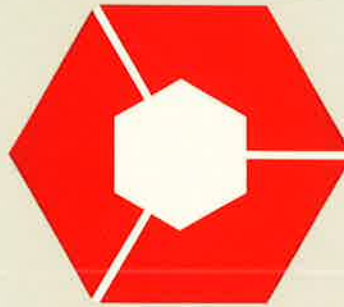


**CORE
DESIGN
GROUP**

ARCHITECTS
ENGINEERS

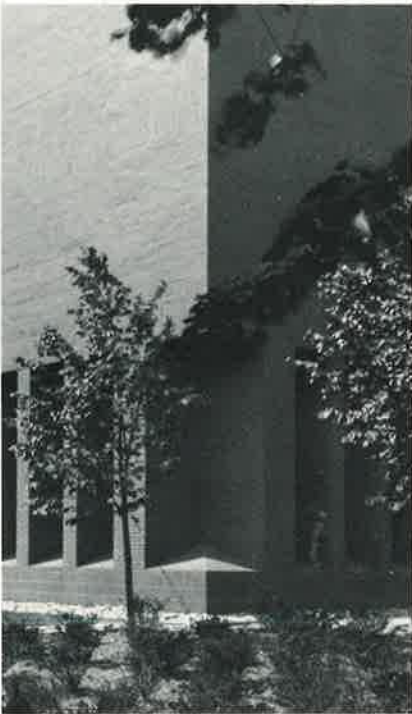
THE AMERICAN INSTITUTE OF ARCHITECTS ARCHIVES
1735 New York Ave. NW, Washington, DC 20006

CORE
DESIGN
GROUP



ARCHITECTS
ENGINEERS

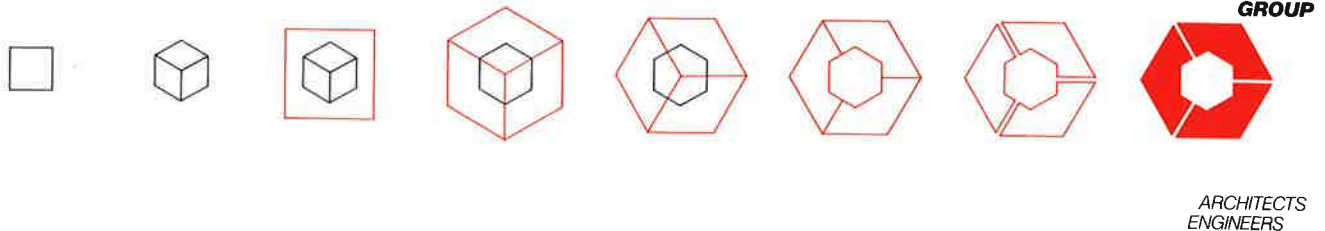
THE AMERICAN INSTITUTE OF ARCHITECTS ARCHIVES
1735 New York Ave. NW, Washington, DC 20006



CORE DESIGN GROUP are specialists in bringing programming and management methods to architecture and engineering design. Drawing upon a body of professionals experienced in architecture, engineering, planning, space-coordination, marketing and finance, CORE brings an integrated approach to the fields of architecture and engineering.

The demonstrated experience of its principals and affiliates enables CORE DESIGN GROUP to respond capably and efficiently to the changing needs of government, industry and commercial institutions.

CORE's services are equally applicable to a small scale product design or a full scale regional plan. Each project undertaken by CORE receives similar attention to detail. The result is an end product that can confidently meet user requirements and client expectations.



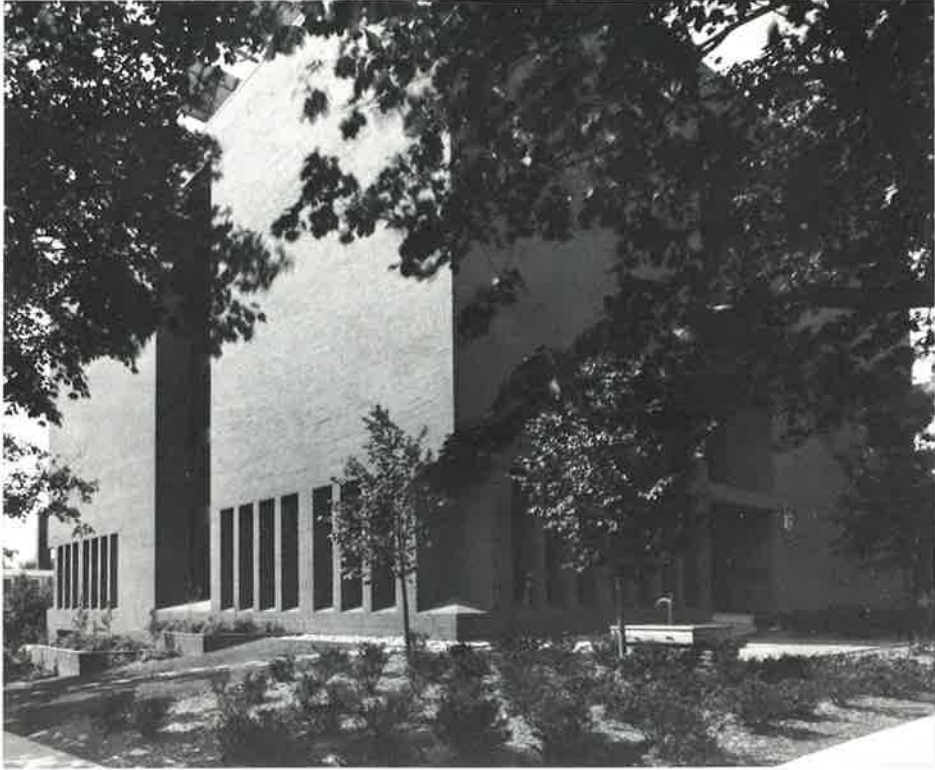
CORE DESIGN GROUP, a partnership between Keith L. Graham and Associates Inc., Architects and WBA Engineering Services Ltd., Consulting Engineers, brings a combination of over 75 years experience in architecture and engineering design to Atlantic Canada.

Keith L. Graham, a leading architect since 1955 and principal of Keith L. Graham and Associates Inc., has a solid reputation in problem identification, program and design.

The Whitman Benn Group, in existence since 1933, is known for its ability to provide practical solutions to a wide range of engineering and operational problems.

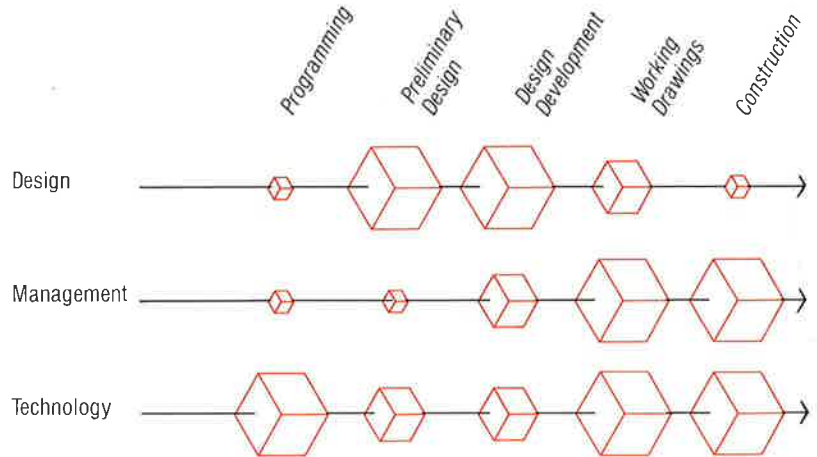
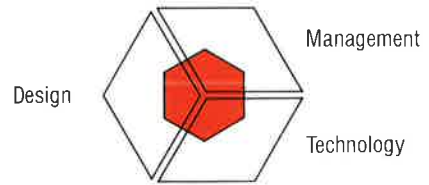
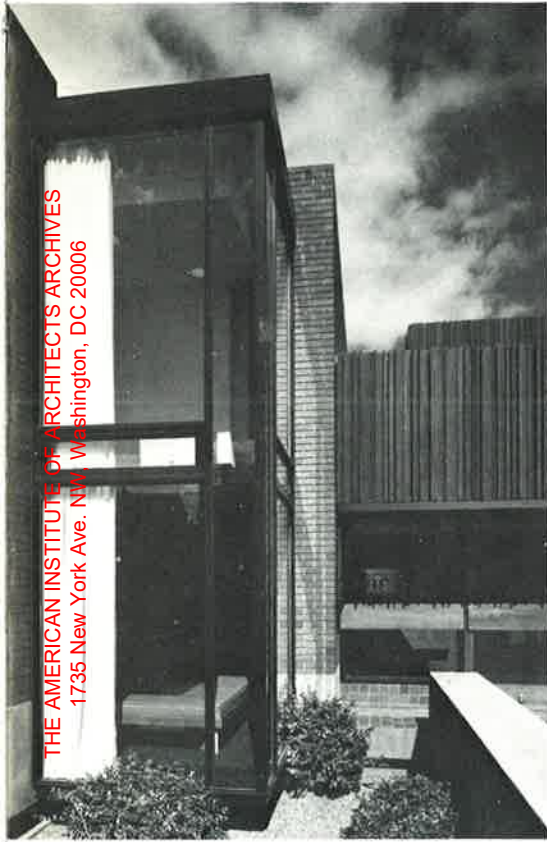
CORE serves its clients by providing integrated architectural, engineering and management services, tailored to specific project requirements.

THE AMERICAN INSTITUTE OF ARCHITECTS ARCHIVES
1735 New York Ave. NW, Washington, DC 20006



Public Archives of Nova Scotia
Halifax, Nova Scotia

THE AMERICAN INSTITUTE OF ARCHITECTS ARCHIVES
1735 New York Ave. N.W., Washington, DC 20006



CORE's emphasis on a multi-disciplinary approach is reflected in its creative utilization of design, management and technology. Each of these three components are highlighted at different stages of a project, resulting in a high quality service to the client, at a minimum cost.

Halifax Police
Headquarters
Halifax, Nova Scotia
*Detail and exterior
view*

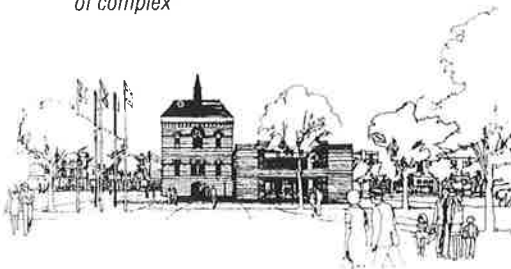
Atlantic Masonry
Association
Award of Merit



Queen's College Residence
Memorial University of Newfoundland
St. John's, Newfoundland



Fredericton City Hall and Library Complex
Fredericton, New Brunswick
*Exterior and interior of library and rendering
of complex*





Seventh Day Adventist
Church
Dartmouth,
Nova Scotia

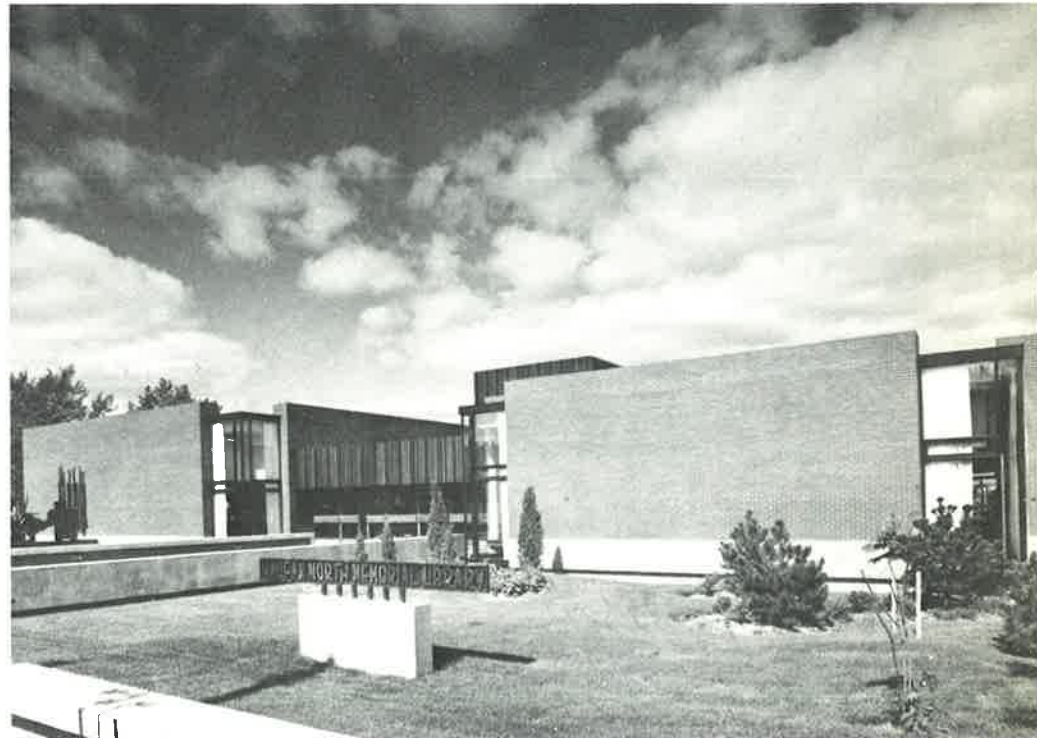


Canadian Coast Guard College
Point Edward, Nova Scotia



Christian Science Reading Room
Halifax, Nova Scotia

THE AMERICAN INSTITUTE OF ARCHITECTS ARCHIVES
1735 New York Ave. NW, Washington, DC 20006



Halifax North Branch Memorial Library
Halifax, Nova Scotia

Honourable Mention
Massey Award for Architecture

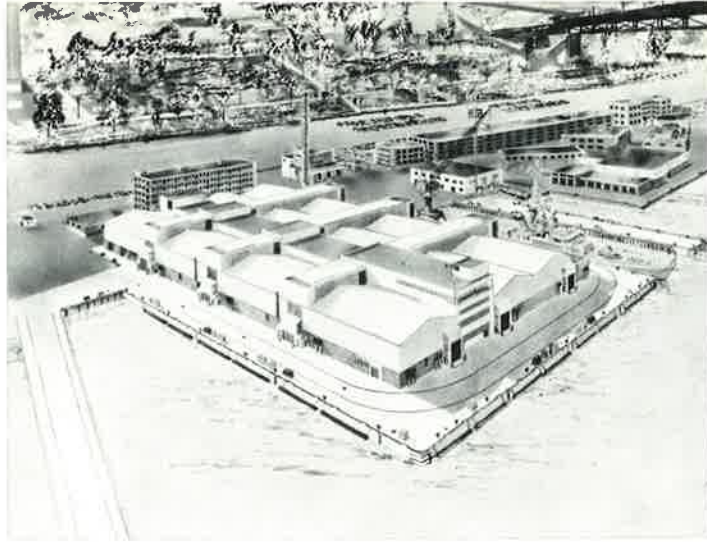
Nova Scotia Association of Architects
Design of Merit Award



Canadian Coast Guard College
Point Edward, Nova Scotia

Regina High School
Corner Brook,
Newfoundland





Ship Repair Unit (A), Jetty 2 Complex
CFB Halifax, Nova Scotia
*Artist's Rendering, structural detail of interior
and multi-purpose dock side Service Mount in
operation*



Michelin Tire Plant
Waterville, Nova Scotia



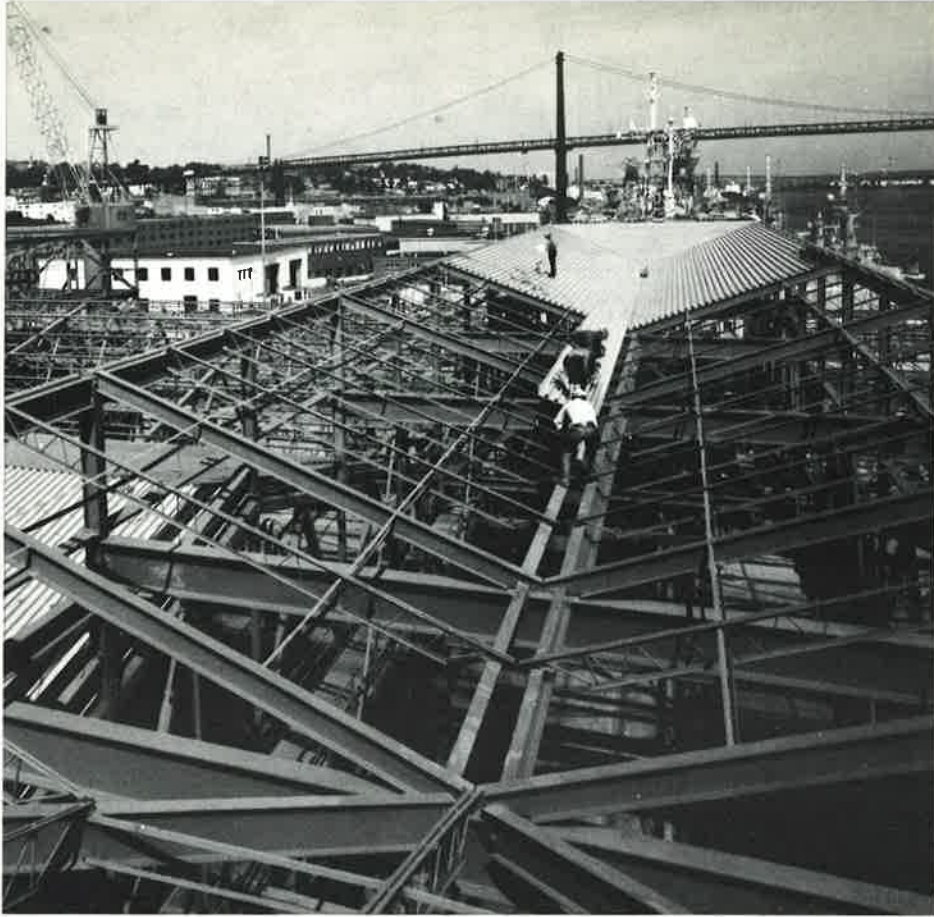
Clarence L. Gosse Bridge
Shubenacadie River, Nova Scotia
Honourable Mention
Canadian Consulting Engineering Design Awards



Mark IV Stable Platform
On location
Award of Merit
Canadian Consulting Engineering Design Awards



Lingan Power Generating Plant
Lingan, Nova Scotia



Core Design Group
Suite 212 Duke Tower
5251 Duke Street
Halifax, Nova Scotia
B3J 1N9

(902) 422-1486
Telex 019-21594

With the resources available through its affiliates and associated companies CORE is able to provide a broad and diversified range of professional services.

Core Design Group,
Halifax, Nova Scotia

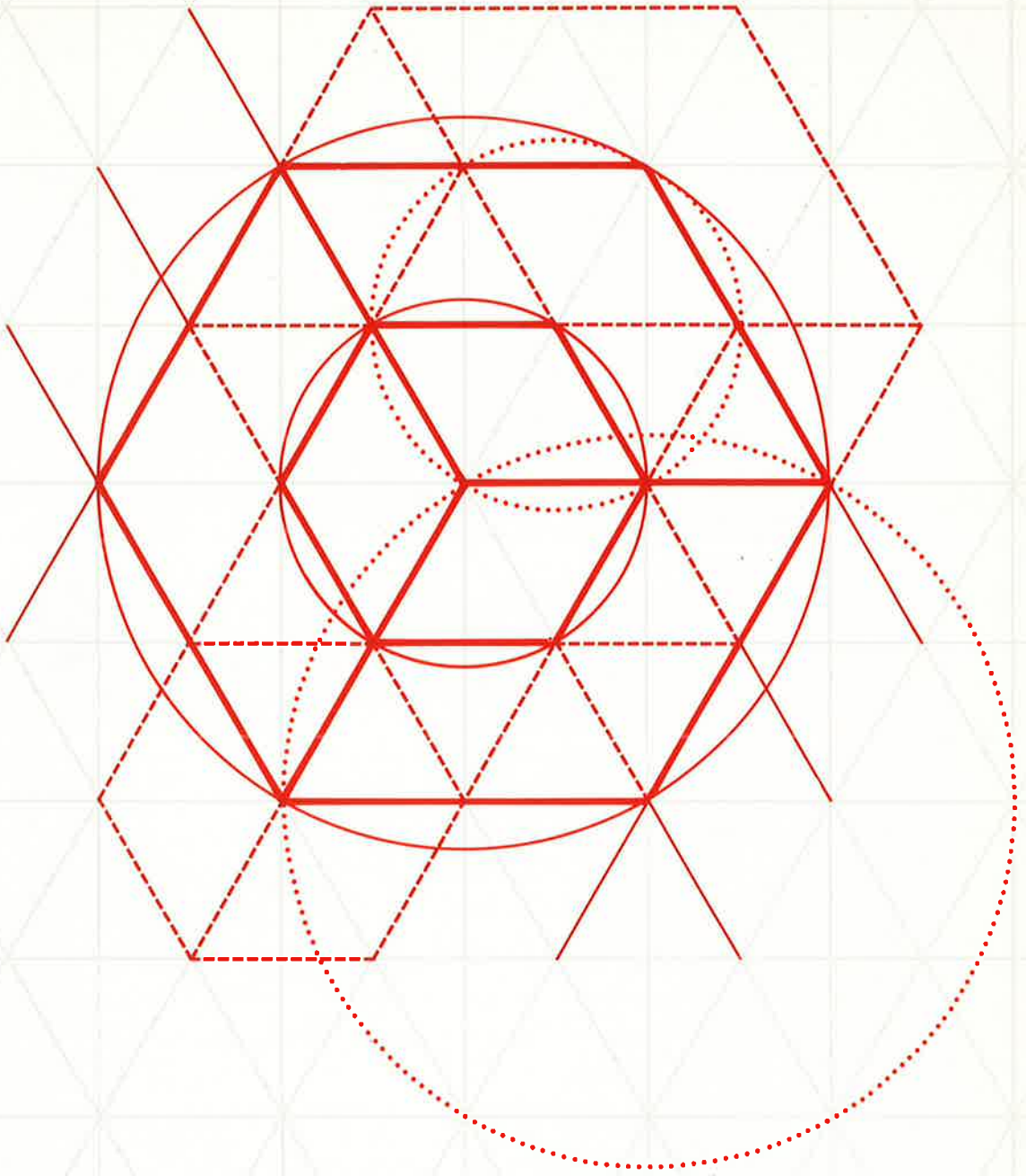
Whitman, Benn and Associates Limited,
Halifax, Nova Scotia

Whitman, Benn Management Services Limited,
Halifax, Nova Scotia

Intramur Consulting Engineering Services Limited,
St. John's, Newfoundland

Cansite Surveys Limited,
Halifax, Nova Scotia and Calgary, Alberta

THE AMERICAN INSTITUTE OF ARCHITECTS ARCHIVES
1735 New York Ave. NW, Washington, DC 20006



THE AMERICAN INSTITUTE OF ARCHITECTS ARCHIVES
1735 New York Ave. NW, Washington, DC 20006

Core Design Group
Suite 212 Duke Tower
5251 Duke Street
Halifax, Nova Scotia
B3J 1N9

(902) 422-1486
Telex 019-21594