



Architecture Billings Index (ABI)

April 2022

The Architecture Billings Index (ABI) is a diffusion index derived from the monthly Work-on-the-Boards survey, conducted by the AIA Economics & Market Research Group. The ABI serves as a leading economic indicator that leads nonresidential construction activity by approximately 9-12 months. The survey panel asks participants whether their billings increased, decreased, or stayed the same in the month that just ended. According to the proportion of respondents choosing each option, a score is generated, which represents an index value for each month. An index score of 50 represents no change in firm billings from the previous month, a score above 50 indicates an increase in firm billings from the previous month, and a score below 50 indicates a decline in firm billings from the previous month.

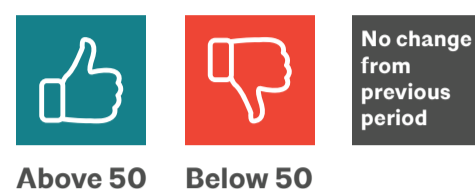
*All graphs represent data from April 2021–April 2022.

ABI

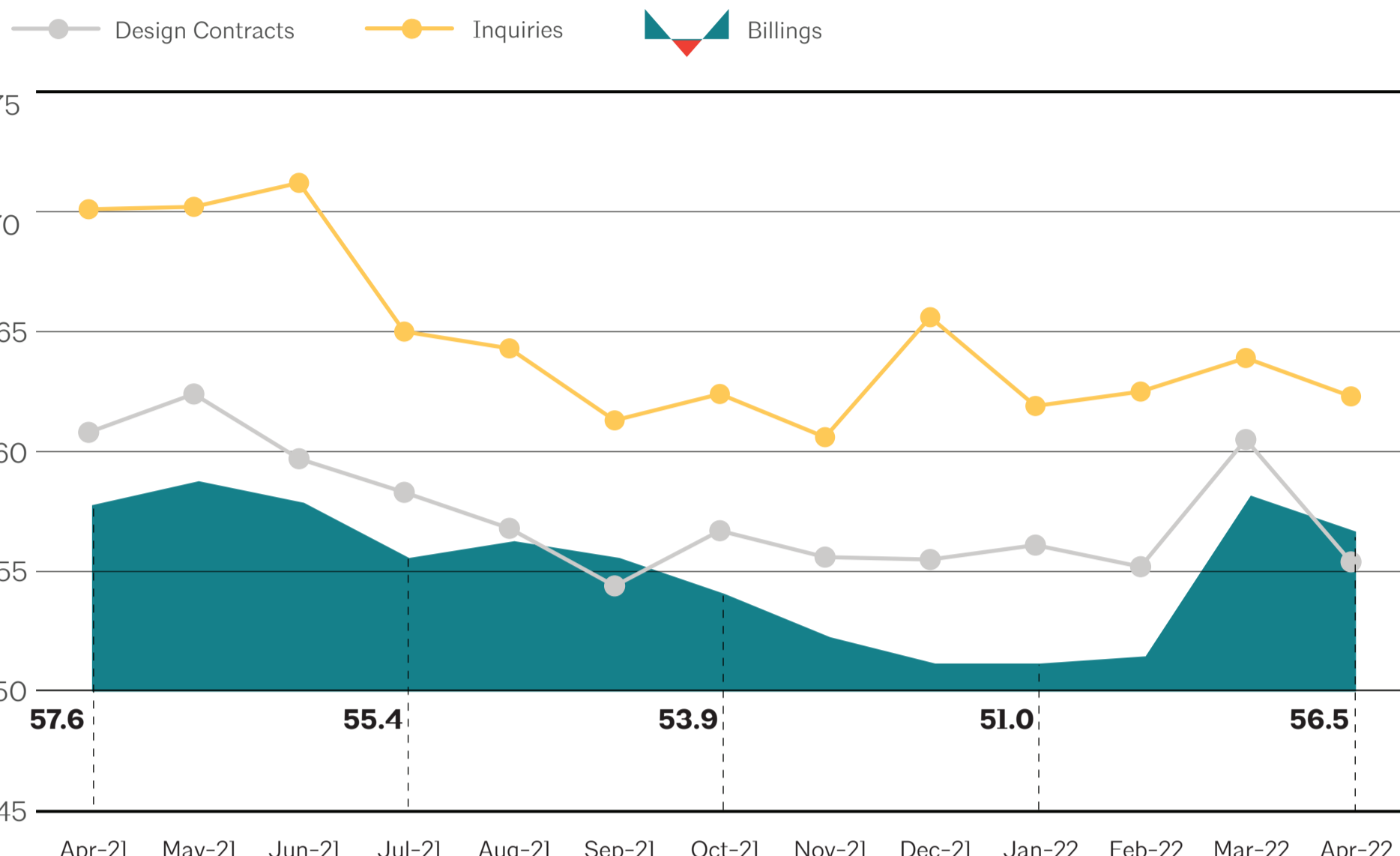
National Regional Sector Practice

National

Business conditions remain strong at architecture firms in April



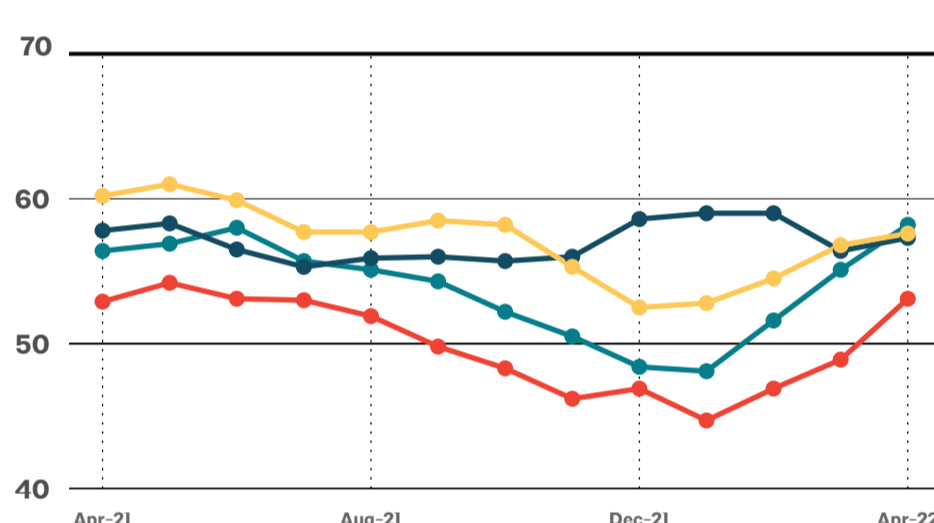
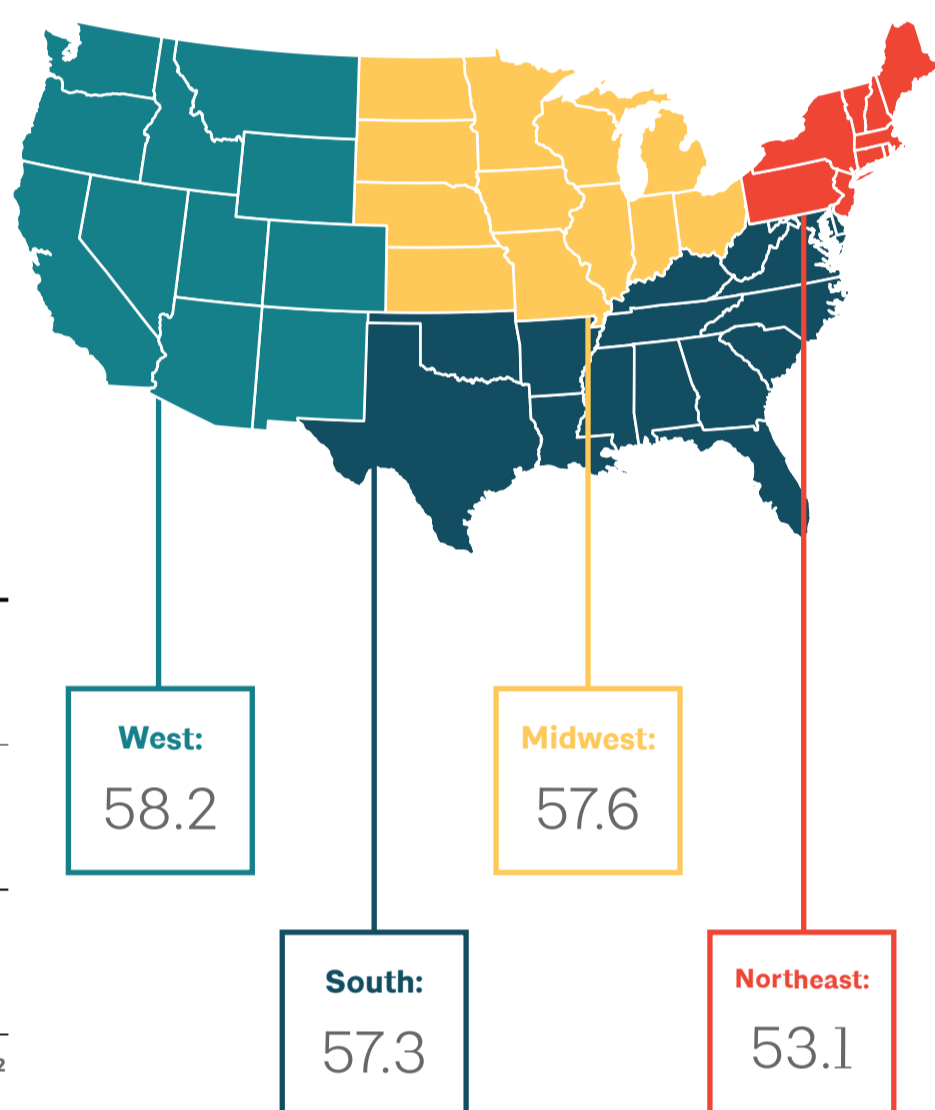
Graphs represent data from April 2021–April 2022.



Regional

Firms located in the Northeast see first billings growth since last summer

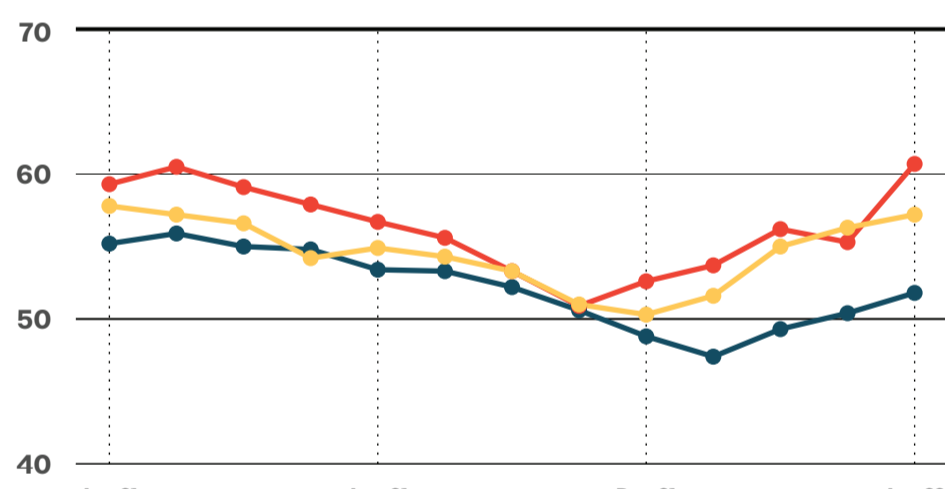
Graphs represent data from April 2021–April 2022 across the four regions. 50 represents the diffusion center. A score of 50 equals no change from the previous month. Above 50 shows increase; Below 50 shows decrease. 3-month moving average.



Sector

Billings continue to strengthen at firms of all specializations

Graphs represent data from April 2021–April 2022 across the three sectors. 50 represents the diffusion center. A score of 50 equals no change from the previous month. Above 50 shows increase; Below 50 shows decrease. 3-month moving average.



Practice

Firm expenses related to employee healthcare, benefits costs are expected to see the largest increase in 2022

units: % of firms indicating which of their firm's expenses they expect to increase proportionally the most in 2022

