



# Architecture Billings Index (ABI)

## March 2022

The Architecture Billings Index (ABI) is a diffusion index derived from the monthly Work-on-the-Boards survey, conducted by the AIA Economics & Market Research Group. The ABI serves as a leading economic indicator that leads nonresidential construction activity by approximately 9-12 months. The survey panel asks participants whether their billings increased, decreased, or stayed the same in the month that just ended. According to the proportion of respondents choosing each option, a score is generated, which represents an index value for each month. An index score of 50 represents no change in firm billings from the previous month, a score above 50 indicates an increase in firm billings from the previous month, and a score below 50 indicates a decline in firm billings from the previous month.

\*All graphs represent data from March 2021–March 2022.

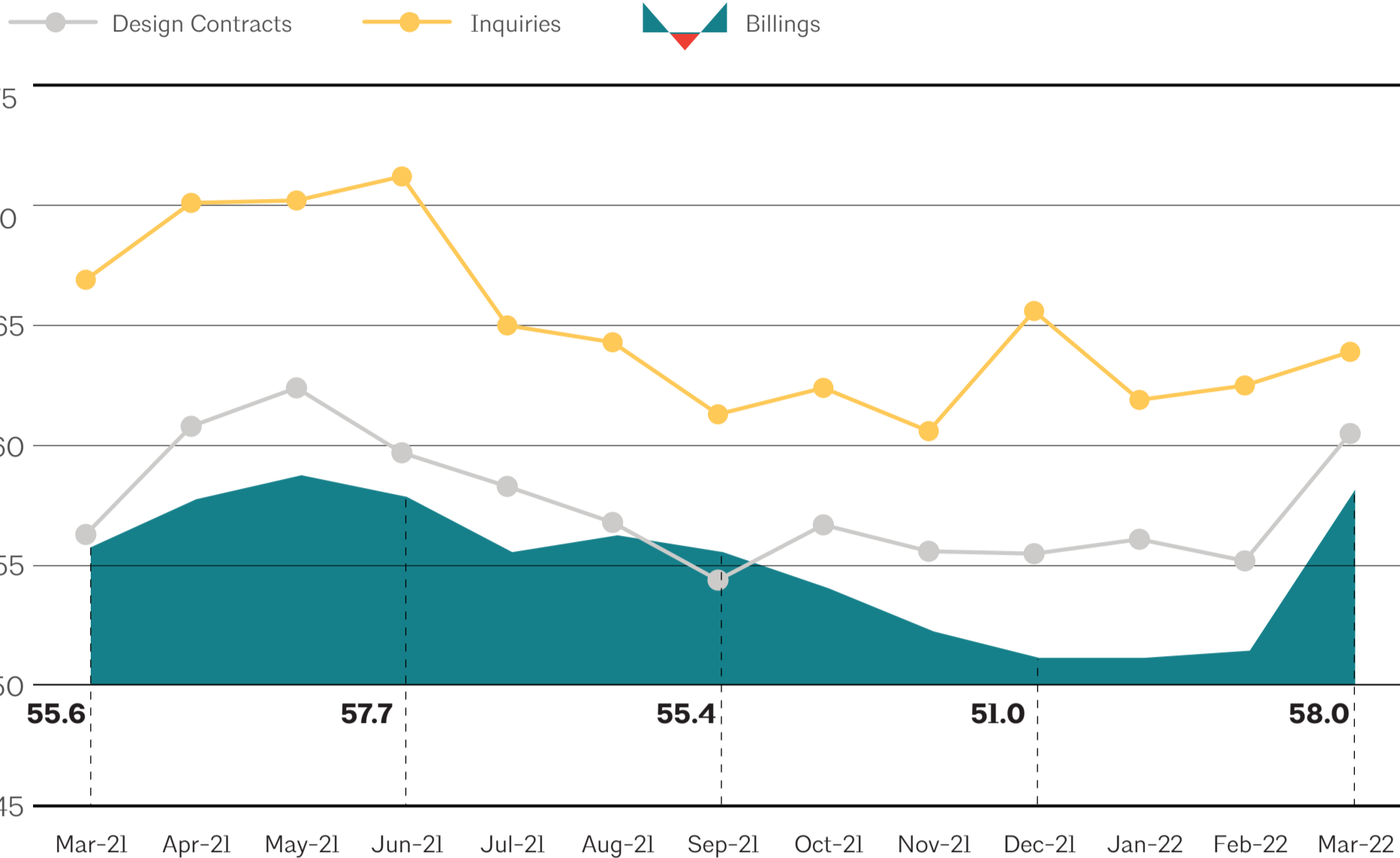
### ABI

National      Regional      Sector      Practice

## National

### Architecture firm billings start the spring on a high note

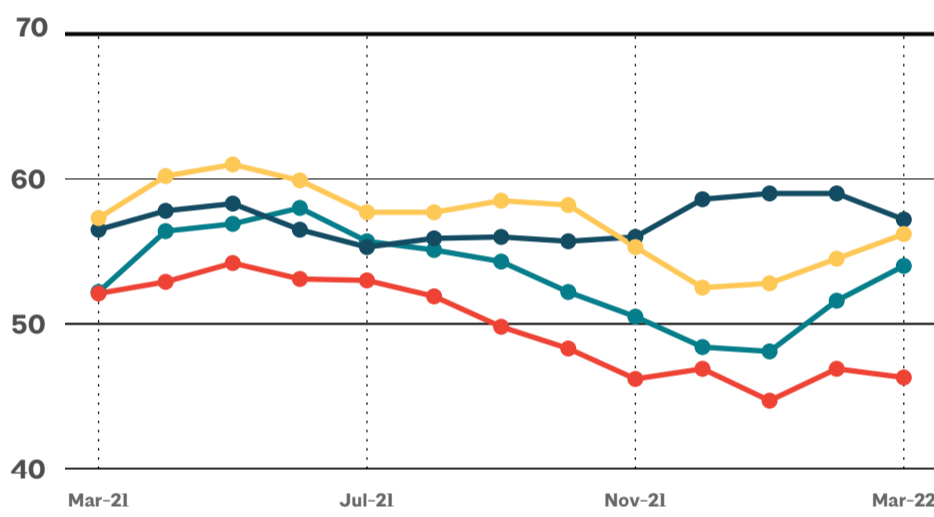
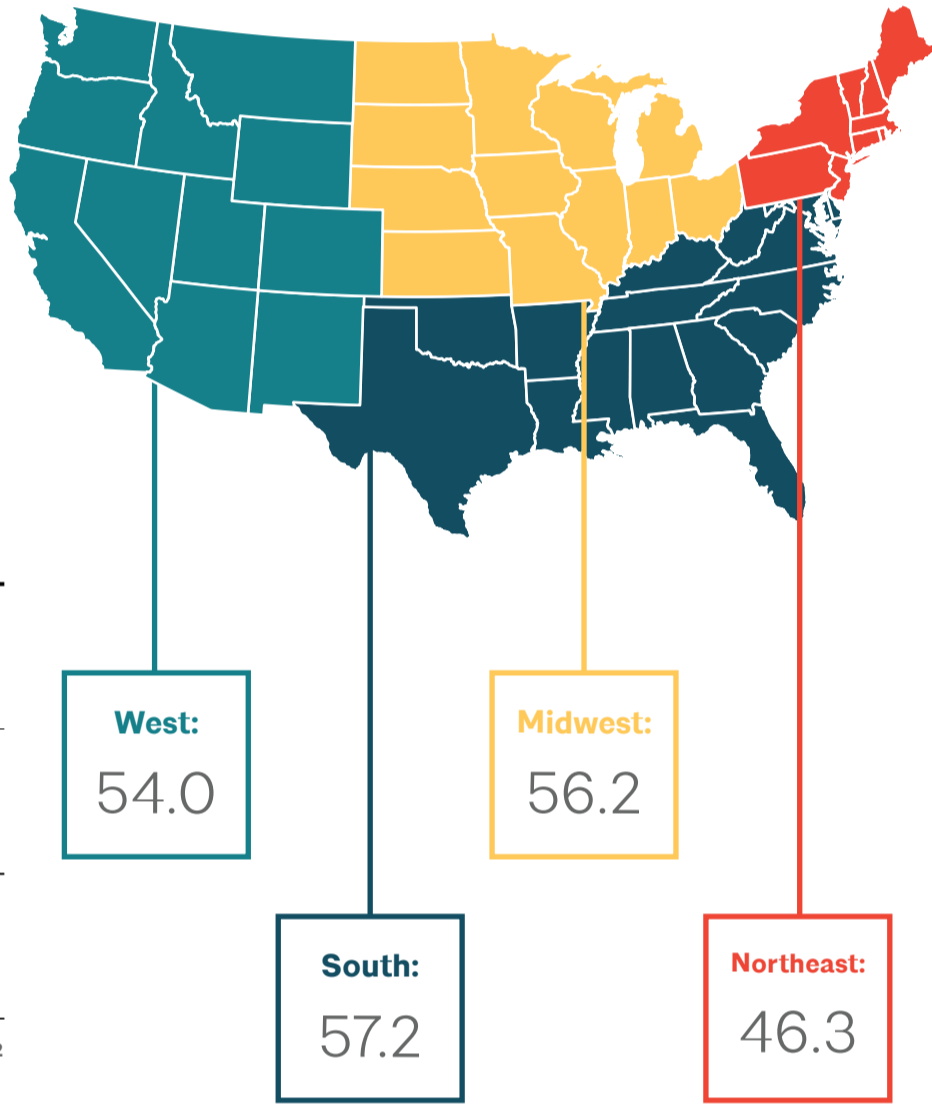
Graphs represent data from March 2021–March 2022.



## Regional

### Business conditions remain strong in all regions except the Northeast

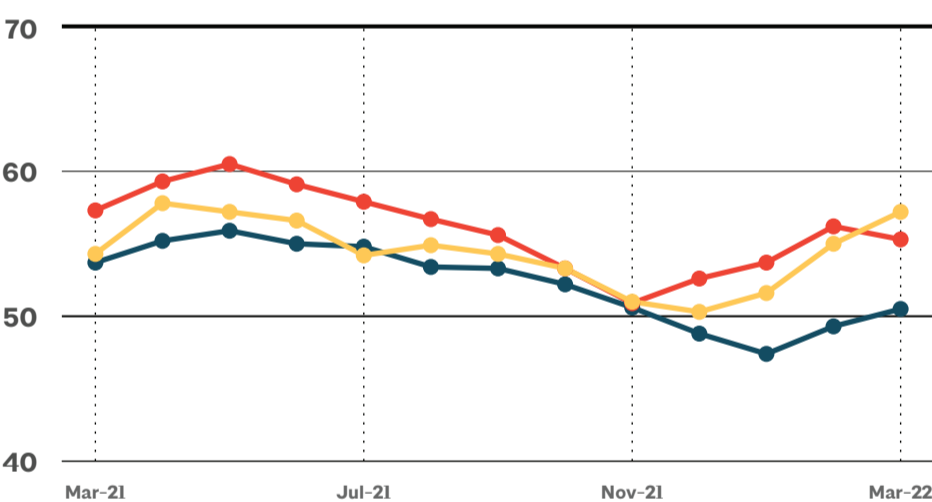
Graphs represent data from March 2021–March 2022 across the four regions. 50 represents the diffusion center. A score of 50 equals no change from the previous month. Above 50 shows increase; Below 50 shows decrease. 3-month moving average.



## Sector

### Billings begin to rebound at firms with an institutional specialization

Graphs represent data from March 2021–March 2022 across the three sectors. 50 represents the diffusion center. A score of 50 equals no change from the previous month. Above 50 shows increase; Below 50 shows decrease. 3-month moving average.



## Practice

### Adaptive reuse, building modernization are most important goals for firms when working on reconstruction projects

units: % of firms with at least 1% of their building design billings from reconstruction projects (e.g., renovations, retrofits, rehabilitations, alterations, additions, and historic preservation) over the past year, single most important goal of reconstruction projects that their firm has worked on over the past year

