

This cover section is produced by the AIA Archives to show information from the online submission form. It is not part of the pdf submission upload.

2022 AIA Fellowship

Candidate Amy Gilbertson
Organization Trivers
Location St. Louis, Missouri
Chapter AIA Missouri; AIA St. Louis

Category of Nomination

Object 1 > Preservation

Summary Statement

With a passion for revitalization, Amy Gilbertson leverages preservation expertise to create authentic yet modern design interventions proving long-term viability of historic structures while elevating diversity in our profession through mentorship, education, and advocacy.

Education

University of Michigan
Ann Arbor, Michigan
Years attended: 2 (1999-2001)
Degree received: Master of Architecture

Southern Illinois University
Carbondale, Illinois
Years attended: 3 (1996-1999)
Degree received: Bachelor of Science, Architectural Studies

Illinois State University
Normal, Illinois
Years attended: 2 (1994-1996)
No degree received (general studies major)

Licensed in:

Arkansas
Connecticut
Illinois
Indiana
Maryland
Missouri
Nebraska
Rhode Island
Tennessee
Texas
Utah

Employment

Trivers

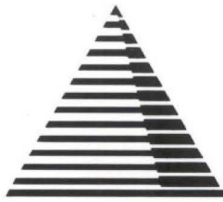
April 2014 - present (7 years, 7 months)

Space Architecture + Design

September 2006 - April 2014 (8 years, 7 months)

Trivers

June 2001 - September 2006 (5 years, 4 months)



Grice Group Architects

4332 Lindell Boulevard Saint Louis, Missouri 63108-2702 314.535.4826 www.grice-stl.com

October 4, 2021

Steven Spurlock, FAIA
Chair, Jury of Fellows
The American Institute of Architects
1735 New York Avenue NW
Washington, DC 20006-5291

RE: Amy Gilbertson, AIA

Dear Mr. Spurlock:

It is with distinct pleasure and pride that I sponsor Amy Gilbertson, AIA, as a candidate for Fellowship in the American Institute of Architects, for Object 1, Preservation. I have known Amy, both personally and professionally, for 20 years. We have shared a notable client, (the City of St. Louis Public School District), and have consistently found common ground in our belief that the preservation of our historic structures is critical to the survival of our urban communities.

I have followed the evolution of Amy's career and her dedication to the preservation and restoration work on some of our nation's most storied buildings throughout the country, including 44 buildings on the National Register of Historic Places. She has served as a leader in the adaptive reuse and preservation of multiple federal, state, and local buildings, garnering national recognition through numerous award-winning projects. In 2015, Amy's work significantly contributed to the successful renovation of the Gateway Arch Museum in St. Louis, Missouri, specifically, the accessibility improvements to the original Saarinen ramps, incorporating current modern-day solutions while honoring its historic elements.

Amy's substantial benefactions to preservation involve the authoring of facility assessments, preservation plans and building design standards for municipal, state, federal, private, and non-profit clients, as well as extensive related national speaking engagements. In addition, she has served on the University of Michigan Taubman College Alumni Council and is currently active in the BD+C Women in Design + Construction Alumni Council and the AIA Women in Architecture Group. Among Amy's commendable attributes are the sharing of her personal knowledge and experience in a variety of forums as an educator at Washington University in St. Louis, conference presenter and panel member. In all her efforts, she has continuously emphasized her appreciation and respect for historic buildings, in conjunction with her ability to apply and engage in contemporary, modern solutions.

Amy's accomplishments and dedication to our profession and its future qualify her presence as an asset to our community and as an outstanding candidate for elevation to the College of Fellows. Close scrutiny of her submissions, evidence, and testimonials, will reveal that she is a "Preservation Pioneer", who has created and shared new strategies for preservation engagement. Further, expansion of our profession through her mentorship, leadership, commitment to diversity, and education, are clearly evident. Over the years, my respect and admiration for her work ethic, professionalism, compassion, and dedication to our art have grown and I am honored to sponsor Amy for the AIA 2022 Fellowship Class.

Sincerely,
Grice Group Architects

Karl A. Grice, FAIA, NOMA, LEED® AP BD+C

Principal
KAG:me

With a passion for revitalization, Amy Gilbertson leverages preservation expertise to create authentic yet modern design interventions proving long-term viability of historic structures while elevating diversity in our profession through mentorship, education, and advocacy.

DESIGN

Amy's designs elevate an authentic representation of both the past and the present. Her body of work harnesses potential, celebrates history, and creates renewed energy for underutilized or forgotten structures. Through this design methodology, she creates design solutions that enhance the historic integrity of a property balanced with new contemporary design interventions resulting in an authentic representation of the building's evolution over time. This approach has created successful projects that encompass variety in building era, scale, and location.

Additionally, Amy has the proven ability to convey a vision for historic properties helping clients, stakeholders, and partner architects realize the value that can be gained through reuse of a historic structure. She combines a passion for historic properties and a mastery of the Secretary of the Interior's Standards for the Treatment of Historic Properties to create thoughtful design solutions that fulfill client and community vision. Through developing an understanding of design intent and community priorities at the time of original design and construction, Amy works to translate the original vision to inform creative and innovative modern-day solutions.

PRESERVATION EXPERTISE

In Amy's 20+ years of experience, she has had the opportunity to work on some of our nation's most storied buildings including 44 buildings on the National Register of Historic Places and four National Historic Landmarks. As a passionate advocate for modern interventions in historic structures, Amy has been selected or invited to speak about design for historic structures at several local, national and international conferences and seminars. Her projects have received over 40 design awards and have been featured as case studies at several national conferences and two international conferences.

Amy has authored several Facility Assessments, Preservation Plans, and Building Design Standards for municipal, state, federal, private and non-profit clients. She has completed this work for over 2 million square feet of historic building footprint spanning eight cities throughout the country. By leading research initiatives as well as a thorough analysis of original design documentation and existing conditions, Amy develops planning tools that allow clients to proceed with projects at their historic properties with confidence that they are preserving character-defining features while also allowing for new and innovative design solutions to meet their modern-day needs.

MENTORSHIP + EDUCATION

A respected mentor for women in architecture, Amy enjoys sharing expertise and personal experience with others in the field. She has developed a wide sphere of influence through a variety of outlets including teaching, conference presentations, panel discussions, and formal mentorship. Amy works to cultivate an appreciation for historic buildings and their ability to support contemporary, modern solutions among her project teams and peers both internally and with national architectural partners. She serves on the University of Michigan Taubman College Alumni Council, BD+C's Women in Design + Construction Advisory Council and is an active member of the local St. Louis AIA Women in Architecture group.

Understanding that diversity in the field of historic architecture and the architecture field as a whole is dependent on cultivating the next generation, Amy has devoted extensive time toward education and mentorship and to creating a more equitable work environment at her own firm. As Principal at Trivers, she has transformed the diversity of the firm achieving a 50-50 split between women and men as well as greatly improved minority representation within the firm. Amy led efforts to obtain the firm's first JUST label in 2019 and reshaped policies that resulted in winning the AIA Central States Emerging Professional Friendly Firm award for the past two years.



education

2015	CORO Women in Leadership Focus St. Louis
2001	Master of Architecture University of Michigan
1999	Bachelor of Science, Architectural Studies Southern Illinois University-Carbondale

registrations

Registered Architect	Arkansas, Connecticut, Illinois, Indiana, Maryland, Missouri, Nebraska, Rhode Island, Tennessee, Texas, Utah
2019 - present	LEED Green Associate
2016 - present	Fitwel Ambassador
2015 - present	NCARB Certification
2003 - present	Qualified as Historic Architect per 36 CFR 61

work experience

2015 - present	Trivers	Principal
2014 - 2015	Trivers	Associate Project Manager
2006 - 2014	Space Architecture + Design	Project Manager Project Architect
2001 - 2006	Trivers	Project Architect Architectural Designer

teaching

2016-2020	Architect as Entrepreneur + Leader Washington University Sam Fox School of Architecture + Design St. Louis, Missouri
2020	Communication Excellence: Featured Guest Lecturer Washington University McKelvey School of Engineering St. Louis, Missouri
2020	Professional Practice: Featured Guest Reviewer University of Michigan Taubman College of Architecture + Urban Planning Ann Arbor, Michigan

jury service

2021	Willeke Prize Juror (Graduate Level) Oldest and most prestigious prize for student work offered at University of Michigan Taubman College
2020	Willeke Prize Juror (Graduate Level) University of Michigan Taubman College



professional memberships

American Institute of Architects
 Association for Preservation Technology-Central Plains
 Missouri Preservation
 National Trust for Historic Preservation
 Focus St. Louis



MISSOURI
 PRESERVATION



volunteer experience

2018 – present University of Michigan
 Taubman College of Architecture + Urban Planning Alumni Council
 Membership Committee Chair

2018 – present Women in Design + Construction
 Advisory Council



2021 National Trust for Historic Preservation
 Diversity Scholarship Program Mentor
 PastForward Conference

2019 USGBC Missouri Gateway Chapter
 Green School Mentor
 Lafayette Preparatory Academy (5th Grade Students)



2018, 2021 Tower Grove Park
 Plant it Forward

2017, 2021 Lafayette Preparatory Academy
 Intro to Architecture (1st Grade Students)



2016 – 2019 Healthcare Hospitality Network
 Board Member, Membership Committee Chair

2015, 2017, 2019, 2021 Open Space Council
 Operation Clean Stream



2014 St. Louis Language Immersion Schools
 Construction Site Tour (1st Grade Students)

2013 St. Louis Language Immersion Schools
 Intro to Architecture (3rd Grade Students)

2013 Missouri Preservation
 Historic Tax Credit Phone Bank

2012 - 2014 Forest Park Southeast
 Development Committee

2007 – 2013 Shaw Area Children's Center
 Board Member





project experience - active projects

2024 **Frank E. Moss U.S. Courthouse**; Salt Lake City, Utah
 Lead Historic Architect
 234,000 SF renovation + seismic retrofit of historic U.S. Post Office + Courthouse

2023 **Major General Emmett J. Bean Federal Center Backfill**; Indianapolis, Indiana
 Lead Historic Architect, Principal-in-Charge
 200,000 SF interior renovation of mid-century modern federal building

2023 **Major General Emmett J. Bean Federal Center Exterior Repairs**; Indianapolis, Indiana
 Lead Historic Architect, Lead Designer, Principal-in-Charge
 150,000 SF exterior renovation of mid-century modern federal building

2023 **Old Courthouse**; St. Louis, Missouri
 Lead Historic Architect, Lead Designer, Principal-in-Charge
 87,000 SF renovation of historic courthouse

2023 **Illinois Old State Capitol**; Springfield, Illinois
 Lead Historic Architect, Lead Designer, Principal-in-Charge
 255,000 SF renovation of historic former Illinois State Capitol building

2023 **City Hall Annex**; University City, Missouri
 Lead Historic Architect, Lead Designer, Principal-in-Charge
 37,000 SF renovation for historic City Hall annex

2022 **5th Appellate Court**; Mount Vernon, Illinois
 Lead Historic Architect, Lead Designer, Principal-in-Charge
 15,000 SF interior and exterior renovation of historic appellate court

2022 **Providence Federal Building**; Providence, Rhode Island
 Lead Historic Architect, Principal-in-Charge
 Building Preservation Plan for historic U.S. Courthouse + Post Office

2022 **John O. Pastore Federal Building**; Providence, Rhode Island
 Lead Historic Architect, Principal-in-Charge
 Building Preservation Plan for historic federal Post Office building

2022 **Rock Spring School**; St. Louis, Missouri
 Lead Historic Architect
 18,000 SF adaptive reuse of historic school into contemporary office space

project experience - completed projects

2021 **Tower Grove Park Old Playground + Turkish Pavilions Restoration**; St. Louis, Missouri
 Lead Historic Architect, Lead Designer, Principal-in-Charge
 Restoration of two historic Victorian pavilions

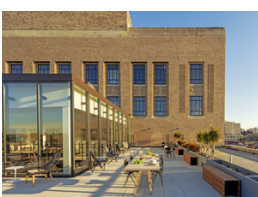
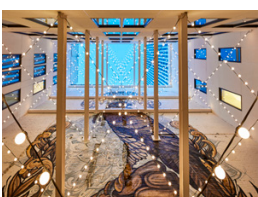
2021 **Tower Grove Park Historic Standards**; St. Louis, Missouri
 Lead Historic Architect, Lead Designer, Principal-in-Charge
 Development of park-wide historic standards

2021 **Richard C. Lee Federal Building**; New Haven, Connecticut
 Historic Architect, Principal-in-Charge
 Building Preservation Plan for 117,000 SF historic federal courthouse + post office

2021 **City Hall Annex**; University City, Missouri
 Lead Historic Architect, Lead Designer, Principal-in-Charge
 37,000 SF facility assessment for historic City Hall annex

2021 **The Peregrine**; Omaha, Nebraska
 Lead Historic Architect, Lead Designer, Principal-in-Charge
 69,000 SF adaptive reuse of historic Saunders-Kennedy building into 89-key boutique hotel

2021 **St. Louis Post-Dispatch**; St. Louis, Missouri
 Historic Consultant
 305,000 SF adaptive reuse of historic newspaper building into contemporary office space



building listed on national register of historic places



building designated national historic landmark



2021 **Steelcote Crossing**; St. Louis, Missouri
 Lead Historic Architect
 15,000 SF adaptive reuse of historic Columbia Oil Building into 15 apartments



2020 **The Georgian**; St. Louis, Missouri
 Lead Historic Architect
 82,000 SF adaptive reuse of multiple historic hospital buildings into 74 apartments



2019 **LaSalle Building/Hotel Indigo**; St. Louis, Missouri
 Lead Historic Architect, Lead Designer, Principal-in-Charge
 49,000 SF adaptive reuse of 13-story historic LaSalle Building into 88-key boutique hotel



2019 **Steelcote Lofts**; St. Louis, Missouri
 Lead Historic Architect
 44,000 SF adaptive reuse of historic paint manufacturing building into 32 apartments



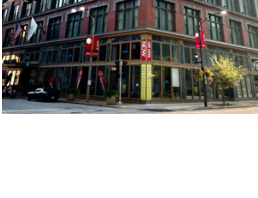
2018 **Tower Grove Park Stable Restoration**; St. Louis, Missouri
 Lead Historic Architect, Lead Designer, Principal-in-Charge
 1,000 SF restoration of 1868 horse stable located in Tower Grove Park



2018 **Missouri State Capitol**; Jefferson City, Missouri
 Historic Architect
 330,000 SF Master Plan + security renovations for historic state capitol



2018 **Pettis County Courthouse**; Sedalia, Missouri
 Lead Historic Architect, Principal-in-Charge
 41,000 SF Building Preservation Plan for historic county courthouse



2015 **Gateway Arch Accessibility Improvements to Original Saarinen Ramps**; St. Louis, Missouri
 Lead Historic Architect
 Renovation of Eero Saarinen's museum entrance and exit ramps located at base of Arch legs

2014 **Hamiltonian Federal Savings + Loan Association Building**; St. Louis, Missouri
 Lead Historic Architect, Lead Designer, Project Manager
 10,000 SF renovation of mid-century modern bank into a restaurant

2013 **Rise Coffee**; St. Louis, Missouri
 Lead Historic Architect, Lead Designer, Project Manager
 5,000 SF adaptive reuse of historic residential building for use as restaurant

2013 **Tree House Restaurant**; St. Louis, Missouri
 Lead Historic Architect, Lead Designer, Project Manager
 6,000 SF adaptive reuse of historic commercial building for community restaurant

2012 **The Laurel**; St. Louis, Missouri
 Historic Architect
 610,000 SF adaptive reuse of historic department store into apartments + hotel

2012 **Imagine Academy of Academic Success**; St. Louis, Missouri
 Lead Historic Architect, Lead Designer, Project Manager
 125,000 SF restoration and renovation of historic school building



2012 **Hipolito F. Garcia Federal Building + U.S. Courthouse**; San Antonio, Texas
 Project Architect (Conceptual Design)
 308,000 SF renovation of historic federal building + courthouse on Alamo Square



2010 **Space Architecture + Design Office**; St. Louis, Missouri
 Lead Historic Architect, Designer, Project Manager, Owner Representative for Development
 14,000 SF adaptive reuse of historic industrial building for use as contemporary office



2010 **Paradowski Creative (1928 Locust)**; St. Louis, Missouri
 Lead Historic Architect, Project Manager
 28,000 SF adaptive reuse of historic Missouri Electric Light & Power Company to creative agency office space



2008 **Imagine Schools Environmental Math + Science Academy**; St. Louis, Missouri
 Historic Architect, Lead Designer, Project Manager
 150,000 SF adaptive reuse of historic bakery for use as a K-8 elementary school



2008 **Oliva on the Hill**; St. Louis, Missouri
 Lead Historic Architect, Lead Designer, Project Manager
 14,000 SF renovation of historic tavern for use as a boutique event venue



2007 **Washington Apartments**; St. Louis, Missouri
 Lead Historic Architect, Project Architect
 100,000 SF renovation of hotel for 1904 World's Fair currently housing 88 apartments



2007 **Missouri University of Science + Technology Thomas Jefferson Hall**; Rolla, Missouri
 Project Architect
 60,000 SF renovation of mid-century modern dormitory



2006 **U.S. Customs House + Post Office**; St. Louis, Missouri
 Historic Architect, Project Architect, Lead Designer for Missouri Court of Appeals and Public Lobbies
 240,000 SF renovation of historic post office into courts and office space



2006 **Allen Market Lane Apartments**; St. Louis, Missouri
 Project Architect
 72,000 SF adaptive reuse of historic Bee Hat Factory into 100 apartments

2005 **Forsyth School**; St. Louis, Missouri
 Project Architect
 17,000 SF historic renovation and addition to elementary school

2005 **Lambert St. Louis International Airport IDIQ**; St. Louis, Missouri
 Project Architect, Lead Designer
 Renovations of multiple projects at mid-century modern airport

2005 **St. Louis Public School District IDIQ**; St. Louis, Missouri
 Project Architect, Lead Designer
 Renovations of multiple projects for historic school buildings in St. Louis

2005 **Stephens College Lela Raney Wood Hall**; Columbia, Missouri
 Historic Architect, Project Architect, Lead Designer
 55,000 SF adaptive reuse of historic dormitory into administration building

2002 **Lefevre Hall**; Columbia, Missouri
 Project Designer
 Envelope repair at historic university building

2002 **Washington University Rosedale Court Apartments**; St. Louis, Missouri
 Project Designer
 27,000 SF renovation of historic off-campus apartment building

2001 **Westin Hotel**; St. Louis, Missouri
 Project Designer, Building 5
 384,000 SF renovation of four historic warehouses into a 255-key hotel

speaking engagements



2021 **Tools for Improving EDI at AEC Firms**
Women in Design + Construction National Conference
Chicago, Illinois (December)



2021 **Tower Grove Pavilion Restoration**
AIA St. Louis Chapter Meeting
St. Louis, Missouri



2020 **Jumping into Just**
USGBC, Missouri Gateway Chapter
St. Louis, Missouri



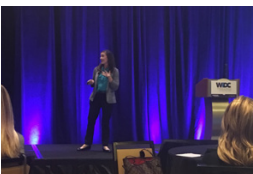
2019 **Accessibility Improvements to Historic Structures**
Association for Preservation Technology International Conference
Miami, Florida

2019 **Recruiting + Retention: Building Success Stories**
University of Michigan Taubman College of Architecture + Urban Planning
Ann Arbor, Michigan



2018 **Becoming an Expert: A Step by Step Guide**
Women in Design + Construction National Conference
Palm Springs, California

2018 **Designing for Wellness Part II**
Healthcare Hospitality Network National Conference
Denver, Colorado



2018 **Rehabilitation vs. Preservation: Understanding Design Implications**
Missouri Preservation Conference
Sedalia, Missouri

2017 **Recruitment + Retention Strategies**
Women in Design + Construction National Conference
Scottsdale, Arizona



2016 **Utilization of Glass for Accessibility Upgrades to Historic Structures
Keynote Speaker**
Glass Association of North America International Conference
Kansas City, Missouri

2016 **Designing for Wellness**
Healthcare Hospitality Network National Conference
Fort Wayne, Indiana

2015 **The Old Courthouse Accessibility Improvements**
George Wright Society Biennial Conference on Parks, Protected Areas + Cultural Sites
Oakland, California

2014 **Guided Tour of the Old Courthouse and Old Post Office**
AIA Academy of Architecture for Justice National Conference
St. Louis, Missouri

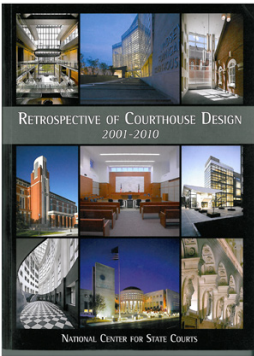


National Awards

- 2008 The Old Post Office
Justice Facilities Review
AIA Academy of Architecture for Justice Knowledge Community
- 2021 The Georgian
Metamorphosis Award
Retrofit Magazine
- 2019 Gateway Arch Museum
The American Architecture Award
The Chicago Athenaeum: Museum of Architecture + Design and the European Centre for Architecture Art Design + Urban Studies
- 2019 Gateway Arch Museum
Modernism in America Award of Excellence, Civic
DOCOMOMO
- 2019 Gateway Arch Museum
Design Award of Excellence
Society of American Registered Architects
- 2019 Gateway Arch Museum
Reconstruction Awards, Gold Award Winner
Building Design + Construction
- 2019 Gateway Arch Museum
Award of Excellence
American Council of Engineering Companies
- 2019 Gateway Arch Museum
Award of Excellence
International Association of Lighting Designers
- 2019 Gateway Arch Museum
Award of Distinction
Illuminating Engineering Society
- 2019 Gateway Arch Museum
Global Best Project, Cultural
Engineering News Record
- 2019 Gateway Arch Museum
Midwest Best Project, Cultural
Engineering News Record
- 2019 Gateway Arch Museum
Outstanding Achievement, Whole Building
AL Light + Architecture
- 2018 Gateway Arch Museum
Best of Year, Large Museum/Gallery Category
Interior Design Magazine
- 2018 Gateway Arch Museum
Best Architecture of 2018: Building for Complex Experiences
Wall Street Journal
- 2018 Gateway Arch Museum
Eight Best Buildings Completed in 2018
Architectural Digest
- 2013 Hipolito F. Garcia Federal Building + US Courthouse
Energy Star National Building Competition:
Largest One-Year Energy Drop of any Office Building
National Energy Star



- 2013 Hipolito F. Garcia Federal Building + US Courthouse
Excellence in Design Award – Institutional/Government Category, Renovation, Environmental Design + Construction
- 2010 The Old Post Office
Retrospective of Courthouse Design, 2001-2010
National Center for State Courts
- 2008 The Old Post Office
Government Design Award
International Interior Design Association



Regional + Local Awards

- 2020 Emerging Professional (EP) Friendly Firm
AIA Central States
- 2019 Emerging Professional (EP) Friendly Firm
AIA Central States
- 2019 Gateway Arch Museum
Merit Award, Architecture
AIA Central States
- 2019 Gateway Arch Museum
Honor Award, Craftsmanship
AIA St. Louis
- 2018 Gateway Arch Museum
Honor Award, Architecture
AIA St. Louis
- 2008 The Old Post Office
Merit Award, Architecture
AIA St. Louis
- 2008 Imagine Schools
Distinguished Award, Architecture
AIA St. Louis
- 2021 Top 20 Women in Construction
St. Louis Construction News & Review
- 2021 Biggest Corporate Philanthropists (Small Businesses) - #5
St. Louis Business Journal
- 2021 American Cancer Society Hope Lodge
Building St. Louis Award Finalist
St. Louis Business Journal
- 2021 The Georgian
Preserve Missouri Award
Missouri Preservation
- 2021 The Peregrine
Best Hotel
Omaha World-Herald
- 2021 The Peregrine
1st Place Rooftop Bar
Omaha World-Herald
- 2019 Tower Grove Park Stable
Most Enhanced Award
Landmarks Association of St. Louis





- 2019 Gateway Arch Museum
Grand Award
American Council of Engineering Companies Missouri
- 2019 Gateway Arch Museum
Project of the Year, Building St. Louis Awards
St. Louis Business Journal
- 2019 Gateway Arch Museum
Award of Excellence
Illuminating Engineering Society, New York Section
- 2016 Tenant Level Winner
St. Louis Green Business Challenge Leaders
- 2015 Hamiltonian (Rooster South Grand)
Most Enhanced Award
Landmarks Association of St. Louis
- 2013 Hipolito F. Garcia Federal Building + US Courthouse
Green Building Awards, Bill Sinkin Solar Technology Award
City of San Antonio
- 2013 Hipolito F. Garcia Federal Building + US Courthouse
Green Building Awards, Commercial Construction – Publicly Funded Award
City of San Antonio
- 2013 Hipolito F. Garcia Federal Building + US Courthouse
Best Sustainable Project
San Antonio Downtown Alliance
- 2012 The Laurel
Most Enhanced Award
Landmarks Association of St. Louis
- 2012 The Laurel
Regional Excellence Award
St. Louis Construction News + Review
- 2007 The Old Post Office
John H. Polker Levee Stone Award
Downtown St. Louis Partnership
- 2002 Washington Apartments
Excellence in Masonry, Rehab-Restoration-Addition
Masonry Institute of St. Louis
- 2002 Allen Market Lane Apartments
Construction Industry Cost Effectiveness Award
St. Louis Council of Construction Consumers
- 2002 Westin Hotel
Excellence in Masonry, Rehab-Restoration-Addition, Distinction in Craftsmanship
Masonry Institute of St. Louis
- 2001 Westin Hotel
Honor Award – Preservation Week
Landmarks Association of St. Louis
- 2001 Westin Hotel
Missouri Historic Preservation Tax Credit Project Award
Missouri Downtown Association

publications



Publications by and about the Nominee

- 2023 Gilbertson, A. (Trivers). *Building Preservation Plan: Frank E. Moss US Courthouse*. (2023 anticipated). U.S. General Services Administration.
- 2022 Gilbertson, A. (Trivers). *Building Design Standards: Major General Emmett J. Bean Federal Center*. (2022 anticipated). U.S. General Services Administration.
- 2021 Gilbertson, A. (Trivers). *Historic Building Preservation Plan: Richard C. Lee US Courthouse*. (2021 anticipated*). U.S. General Services Administration.
- 2021 Gilbertson, A. (Trivers). *Historic Building Preservation Plan: John O. Pastore Federal Building*. (2021 anticipated*). U.S. General Services Administration.
- 2021 Gilbertson, A. (Trivers). *Historic Building Preservation Plan: Providence Federal Building and US Courthouse*. (2021 anticipated*). U.S. General Services Administration.
- *final document delayed due to National Archives closure*
- 2021 Spooner, A. (2021, July 9). *Portico Spring 2021: Amy Gilbertson, M.Arch '01, Knows the Beauty of Making It Better*. Taubman College of Architecture & Urban Planning.
- 2021 Naveh, H. (2021, January 25). *Benefits of Connections and Internships Live On, No Matter the Format*. Taubman College of Architecture & Urban Planning.
- 2020 Sturup, V. M. (2020, December 21). *Distinctive Women Feature Interview 005: Amy Gilbertson*. Leadership In Women.
- 2020 Gilbertson, A. (2020, December 14). *Find the Opportunity in Your Failures With These 15 Practical Steps: Ask how you can do better next time*. *The Business Journals*.
- 2020 (2020, December). *Women in Construction: Inaugural Top 20 Women in Construction*. St. Louis Construction News & Review.
- 2017 Gilbertson, A. (2017, November 5). *The Beauty of 5:00 am*. trivers.com.
- 2017 *Fitwel Featured Ambassador*. (2017, February). fitwel.org.
- 2016 Gilbertson, A. (2016, September 6). *Designing for Wellness: Thinking Beyond Building Construction*. trivers.com.
- 2016 *Alumni Through the Decades*. (2016, Spring). Pioneer Alumni Newsletter.
- 2015 *New Owners of Trivers Associates*. (2015, July 10). St. Louis Post-Dispatch.
- 2015 Feldt, B. (2015, July 10). *Andy Trivers Sells Namesake Firm*. St. Louis Business Journal.

Selected Publications about the Nominee's Projects

- 2021 Abatron. (2021, May 21). *Tower Grove Park Pavilions*. Abatron, Inc.
- 2021 *St. Louis' Old Courthouse to Get Major Upgrade*. (2021, February 3). US News & World Report.
- 2021 *Old Courthouse at Gateway Arch National Park to Undergo Renovations in 2021*. (2021, February 2), Gateway Arch Park Foundation.
- 2021 Gooden, C. (2021, September 20). *Watch now: Turkish Pavilion in Tower Grove PARK Illuminated*. St. Louis Post-Dispatch.
- 2021 Suen, M. (2021, September 7). *Mike Cracchiolo Discusses the Ready Room, His New 800-Capacity Venue for the Grove*. Riverfront Times.
- 2021 Clark, P. (2021, August 30). *Renovations Completed at Central West End Lodge for Cancer Patients and Caregivers*. FOX 2.
- 2021 Kukuljan, S. (2021, August 23). *Steelcote Developer Pitches More Apartments in Midtown*. STLToday.
- 2021 Barker, J. (2021, August 18). *Pier Property Plans to Redo Vacant Ittner School as Offices*. St. Louis Post-Dispatch.
- 2021 Shapiro, M. (2021, July 1). *University City Municipal Complex Project Moving Forward*. St. Louis Post-Dispatch.



HotelBusiness

- 2021 Littman, M. (2021, June 29). *The Best Boutique Hotels in St. Louis, Missouri*. Culture Trip.
- 2021 Stone, A. (2021, June 24). *Peregrine Hotel Opens in Downtown Omaha as Visitors Return to the Metro*. KETV.
- 2021 Hahn, V. S., Fitzgerald, W., Levin, H., & Eby, P. (2021, May 5). *Tower Grove Park Starts Nearly \$1 Million of Major Restoration Work On Two Historic Pavilions*. St. Louis Post-Dispatch.
- 2021 Zotos, A. (2021, May 4). *Lofts, Office Space and a Shipping Container Shopping Center Planned for Midtown*. KMOV.
- 2021 *New Visitor Services and Maintenance Building Now Under Construction on Kiener Plaza*. RiverBender. (2021, May 1).
- 2021 Rizvic, V. (2021, April 29). *Gateway Arch Park Foundation Starts Construction On New Building at Kiener Plaza*. St. Louis Business Journal.
- 2021 Edwards, G. (2021, April 9). *Building St. Louis Awards 2021: Hope Lodge Meets the Needs of Cancer Patients and Families*. St. Louis Business Journals.
- 2021 Knoelk, B. (2021, April). *It's Construction Season in Downtown Omaha*. River City Omaha.
- 2021 *University City Council Reverses 2016 Decision on New Police Station*. (2021, March 14). St. Louis Post-Dispatch.
- 2021 Barker, J. (2021, March 9). *Developer Keeps Midtown Momentum Going in Midst of Pandemic*. St. Louis Post-Dispatch.
- 2021 Hahn, V. S. (2021, February 16). *Old Courthouse to Undergo Second Major Renovation in Its History*. St. Louis Post Dispatch.
- 2021 McGhee, M. (2021, February 4). *The Historic Old St. Louis Courthouse to Undergo Major Renovations*. FOX 2.
- 2021 KSDK. (2021, February 3). *Old Courthouse to Undergo Renovations*. KSDK: 5 On Your Side.
- 2021 Kukuljan, S. (2021, February 3). *The Old Courthouse to Undergo 2-Year Renovation*. St. Louis Business Journal.
- 2021 *Old Courthouse Getting Multi-Million Dollar Renovation*. (2021, February 3). St. Louis KMOX: The Voice of St. Louis.
- 2021 *Old Courthouse to Undergo Renovation*. (2021, February 3). United Press International.
- 2021 Smith, K. (2021, January 21). *Developer Continuing 20 Years of Progress Connecting Downtown to Midtown*. St. Louis Construction News and Review.
- 2021 Nine PBS. (2021). *Tower Grove Park Pavilions | Living St. Louis*. Youtube.
- 2020 *Hope Lodge Rebuilt to Give Housing to Out-of-Town Cancer Patients*. (2020, December 15). Meredith Corporation. KMOV.
- 2020 Smith, K. (2020, December 1). *Raineri, Trivers Unite to Adapt and Reuse Old City Hospital Buildings as The Georgian*. St. Louis Construction News and Review.
- 2020 Gonzalez, C. (2020, October 17). *Downtown Building Soon to Launch Again - as the Peregrine Hotel*. Omaha.
- 2020 Barker, J. (2020, April 17). *Jefferson Connector Project Advances, Wins New Market Credits*. St. Louis Post-Dispatch.
- 2020 Kukuljan, S. (2020, January 6). *Inside Downtown St. Louis' Newest Boutique Hotel: Hotel Indigo*. KSDK.
- 2019 *Hotels Open in the Heartland*. (2019, December 27). Hotel Business.
- 2019 Groth, M. (2019, December 25). *Rock Spring School - Forest Park Southeast Neighborhood*. St. Louis City Talk.
- 2019 Kukuljan, S. (2019, December 24). *Inside Downtown St. Louis' Newest Boutique Hotel*. St. Louis Business Journal.



- 2019 *Rock Spring School - Forest Park Southeast Neighborhood.* (2019, December 25). St. Louis City Talk.
- 2019 Hiller, K. (2019, December 6). *Chesapeake Hospitality Opens 88-Room Hotel Indigo in Downtown St. Louis.* ReBusiness Online.
- 2019 Barker, J. (2019, October 11). *Under New Owner, Remaining City Hospital Buildings to Be Converted to Apartments.* St. Louis Post-Dispatch.
- 2019 Schneider, M. (2019, September 18). *University City Council Considering New Police HQ.* West End World.
- 2019 *Revisiting the Former City Hospital Site in the Peabody Darst Webbe Neighborhood.* (2019, April 14). St. Louis City Talk.
- 2019 Kukuljan, S. (2019, March 21). *Building St. Louis: How the Region Came Together to Reopen the City's Front Door.* St. Louis Business Journals.
- 2019 Smith, K. (2019, February 21). *Work to Begin Soon on Pier Property Group's Steelcote Crossing Lofts in Midtown.* St. Louis Construction News and Review.
- 2019 Farr, L. (2019, February 20). *Steelcote Square District to Transform Area South of Grand Metrolink Station.* Metro St. Louis.
- 2019 Kukuljan, S. (2019, January 15). *Micro-apartments, Microbrewery Fill Out Developer's Big Plan for Midtown.* St. Louis Business Journals.
- 2018 Lawrence, M. (2018, October 30). *Tower Grove Park Completes Historic Stable Restoration.* Tower Grove Park.
- 2018 Weichert, H. (2018, August 8). *O'Fallon City Hall Security Renovations Completed; Meetings Return to Usual Location.* Belleville News-Democrat.
- 2018 Gonzalez, C. (2018, May 21). *First look: Peregrine Boutique Hotel at 18th and Douglas is Partly Financed by New Clean-Energy Program.* Omaha.com.
- 2018 Barker, J. (2017, May 18). *Under New Owner, Remaining City Hospital Buildings to be Converted to Apartments.* St. Louis Post-Dispatch.
- 2018 Litteken, G. (2018, May 4). *City Hall to Undergo Security Renovations - Public Meetings to Be Relocated.* City of O'Fallon, IL.
- 2018 Smith, K. (2018, March 15). *Downtown St. Louis Alive With Plethora of Boutique Hotel Development.* St. Louis St. Louis Construction News and Review.
- 2018 *Abboud Honored with ACS Award, HOPE Lodge Nebraska Opens.* (2018, January 31). Best Care. Nebraska Methodist Health System.
- 2018 Holleman, J. (2018, January 21). *Historic Stable at Tower Grove Park Will Be Renovated Thanks to Anonymous Donation.* St. Louis Post-Dispatch.
- 2017 Stone, A. (2017, October 4). *Developers Plan to Restore Historic Building at 18th and Douglas, Open Boutique Hotel.* KETV.
- 2017 Anderson, J. (2017, July 8). *American Cancer Society Aims to Raise Funds by Year's End for \$11.5 Million Hope Lodge Nebraska.* Omaha World-Herald.
- 2017 *Hotel Indigo Underway in Downtown St. Louis.* (2017, March 21). St. Louis Construction News and Review.
- 2017 Bryant, T. (2017, January 12). *Hotel Indigo Coming to Downtown St. Louis.* St. Louis Post-Dispatch
- 2016 Froeb, I. (2016, February 25). *Dave Bailey to Open Second Rooster in Tower Grove.* St. Louis Post-Dispatch.
- 2014 Brashares, K. (2014, September 16). *Sneak Preview Photos: Tree House Vegetarian Restaurant.* Feast Magazine.
- 2013 Renner, M. (2013, December 1). *Review: Tree House in St. Louis.* Sauce Magazine.
- 2013 Solomont, E. B. (2013, November 1). *Rise Coffee House Opens in the Grove.* St. Louis Business Journal.
- 2013 Logan, T. *Historic Tax Credit Supporters Gearing Up, Again.* (2013, April 7). St. Louis Post-Dispatch.



Imagine Schools



B.E.L.T.

Built Environment in Layman's Terms



The New York Times



- 2013 *St. Louis Flaunts its First Green Energy High Rise.* (2013, April 2). Building Enclosure.
- 2012 Tomich, J. (2012, June 14). *Ameren UE's Energy Savings Rebates See Few Takers Among Businesses.* St. Louis Post-Dispatch.
- 2011 Jones, E. (2011, May). *Just Imagine.* Imagine Schools.
- 2011 STLToday. (2011, January 16). *Trivers Associates Architects Lauded for Old Post Office Renovations.* St. Louis Post-Dispatch.
- 2010 Cohen, R. (2010, November 18). *Laurel Building Transforms to Embassy Suites, Apartments in Downtown St. Louis.* St. Louis Post-Dispatch.
- 2010 *Space at the Grove, St. Louis.* (2010, July 31). Metal Construction News.
- 2010 Mortice, Z. (2010, June 18). *Trivers Associates and the GSA Find Stimulus Dollars to Reconnect Alamo Fort and Federal Building.* AIArchitect.
- 2010 Brown, L. R. (2010, May 19). *Laurel Closes on Financing for \$142M Project.* St. Louis Business Journal.
- 2010 Bryant, T. (2010, May 19). *Old Dillard's is Ready for its Makeover.* St. Louis Post-Dispatch.
- 2010 Weiss, T. (2010, May 1). *Paradowski Creative's new Space.* B.E.L.T. | Built Environment in Layman's Terms.
- 2008 Columbia Missourian. (2008, July 19). *Putting on a New Face.*
- 2008 *The Old Post Office/Missouri Court of Appeals, Eastern District.* (2008), Justice Facilities Review.
- 2007 *St. Louis, Missouri: The Next Chapter in the Story of a Great American City is Taking Shape.* (2007, December). Architect.
- 2007 Brinkmann, J. and Miller, D. (2007, July/August). *Cinderella Stories: Adaptive Reuse of Older Buildings.* Facilities Manager.
- 2007 Sutin, K. (2007, April 19). *Post Modern.* St. Louis Magazine.
- 2006 McKee, N. (2006, September/October). *Restoring the Heart of St. Louis: The Old Post Office.* St. Louis Commercial Journal.
- 2006 Pittman, A. (2006, March/April). *The Old Post Office Reigns Again Over the Downtown Business District.* St. Louis Construction News & Review.
- 2005 Tucci, L. (2005, March 30). *In the Arch's Shadow, Signs of Revival.* The New York Times.
- 2004 Sybert, L. (2004, October 15). *Old Post Office Project has Roots in Plan from 1993.* St. Louis Business Journal.
- 2002 Jackson, M. (2002, November 24). *U.S. Bank, B of A, Bell, Danforth Take Stake in Old Post Office.* St. Louis Business Journal.
- 2001 *The Old Post Office: End of the Century?* (2001, December 23). St. Louis Post-Dispatch.
- 2000 Sutin, K. (2000, September). *The Westin Hotel at Cupples Station: A Real Cinderella Project.* St. Louis Construction News & Review.
- 2001 Kipp K. *Cupples Reincarnation.* (2001, May). St. Louis Commerce Magazine.
- 2001 Jackson, M. (2001, January 19-25). *Glorious Transformations -- Creating Grand Hotels from Derelict Buildings Requires Innovation, Determination -- and a Bit of Madness.* St. Louis Business Journal.

exhibit list

- 01 **The Old Courthouse Exterior Accessibility**
St. Louis, Missouri
Construction Complete
- 02 **CityArchRiver Master Services Agreement**
St. Louis, Missouri
Construction Complete: Ranger Station, Kiener Guest Services
Design Complete: Old Courthouse Phase II
- 03 **Hamiltonian Federal Savings + Loan Association Building**
St. Louis, Missouri
Construction Complete
- 04 **Tower Grove Park Master Services Agreement**
St. Louis, Missouri
Construction Complete: Stable Restoration, Turkish Pavilion,
Old Playground Pavilion, Stupp Center
In-Progress Design: New Visitor Entrance Addition, Event Support
Center, Operations Support Building
- 05 **Imagine Schools Environmental Math + Science Academy**
St. Louis, Missouri
Construction Complete
- 06 **The Georgian**
St. Louis, Missouri
Construction Complete
- 07 **U.S. Customs House + Post Office**
St. Louis, Missouri
Construction Complete
- 08 **Frank E. Moss U.S. Courthouse**
Salt Lake City, Utah
In-Progress Design
- 09 **Preservation Planning Tools**
National
- 10 **Mentorship + Education**
National

Location

St. Louis, Missouri

Architecture Firm of Record

Trivers

Design Firm

Trivers

Completion date

2018

Role of NomineeLead Historic Architect
Principal-in-Charge**Publications**

10+

"The project program required adding accessible ramps to two sides of the exterior of the historic building, as well as providing accessible ramps at multiple locations on the interior of the building. Amy Gilbertson demonstrated not only a clear understanding of accessibility but also the Secretary of the Interior's Standards. Amy was able to separate the nuances of "preservation" versus "rehabilitation" while also understanding the character defining features of the historic structure. The result was a successful design that was accepted by the National Park Service."

Anna Leavey

Former Director of Construction
(current Consultant)
Gateway Arch Park Foundation

southeast courtyard ramps

01 The Old Courthouse Exterior Accessibility

Constructed in 1839, the Old Courthouse is situated in the heart of downtown St. Louis, framed by the Gateway Arch. Two cases that helped shape our nation's history originated within the walls of the Old Courthouse: Dred Scott v. Sandford, arguably one of the most important cases ever tried in the United States that ultimately contributed to the Civil War, and Virginia Minor v. Happersett, fighting for women's voting rights. The National Park Service took ownership of the building in 1940, creating a museum that honors the historical significance of the cases held within its walls.

Challenge

Each of the four facades has circulation access raised above grade giving prominence to the structure but limiting access for those with mobility issues. Navigating a rise of 8 feet on the west façade and 5 feet on the east façade, accessible improvements had to be thoughtfully planned as all facades are considered "primary". Though the Historic Structures Report called for utilization of the Secretary of the Interior's Standards for Rehabilitation, the National Park Service was resistant to the idea of interventions that "differentiate" new construction from original.

Role

As Lead Historic Architect and Principal-in-Charge for this project, Amy Gilbertson led design charrettes with clear goals for decision-making, guiding stakeholders to consensus for design approach regarding exterior accessibility improvements. Through several years of engagement, Gilbertson led the design team through two fully designed, contemporary solutions meant to differentiate new from old while remaining subservient to the grandeur of the original courthouse.

Outcome

Though clearly an addition to the original construction, the final design is both compatible and modern in its simplified detailing. The selected design utilizes custom black metal guard rails matching the profile of existing portico guard rails. Black metal mesh and integral lighting at the base of the guard rail helps to simplify the material palette while meeting all code requirements.

A concrete stem wall supports a cantilevered switch-back ramp. At the top of the ramp, the cantilever extends over the moat providing access to the original limestone portico. Through extensive collaboration with the structural engineer, the ramp slabs have been kept to a narrow profile at the edge with no physical connection or damage to the original limestone. The ramp appears to float above the historic courtyard landscape. Combined, these details ensure that the ramp design itself is kept as diminutive as possible and also creates a completely reversible solution that has in no way harmed or damaged original materials.



southwest courtyard ramps

DECLARATION OF RESPONSIBILITY

I have personal knowledge of the nominee's responsibility for the exhibit listed above. That responsibility included: *largely responsible for design*

Ryan McClure, Executive Director
Gateway Arch Park Foundation (client)



southeast courtyard before



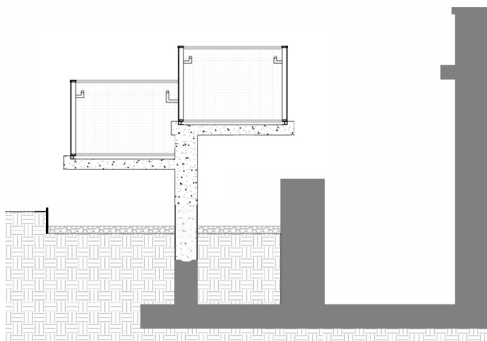
southeast courtyard after



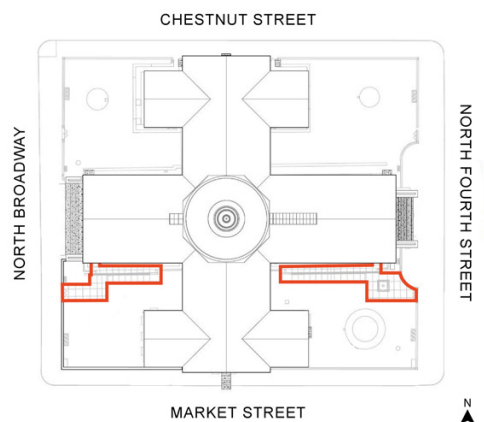
moat condition before



southwest courtyard after



ramp stem wall and cantilever detail



site plan

Location

St. Louis, Missouri

Architecture Firm of Record

Trivers

Design Firm

Trivers

Completion date

2023

Role of Nominee

Lead Historic Architect
Principal-in-Charge
Lead Designer

Publications

15+

“Amy helped to skillfully lead the design team on the Ranger Station project and the Guest Services Building at Kiener Plaza. Both projects required integrating modern architecture into a historic landscape and urban park while preserving the cultural resources of both.”

Anna Leavey

Former Director of Construction
(current Consultant)
Gateway Arch Park Foundation



kiener visitor services building

02 CityArchRiver Master Services Agreement

Through the largest public-private undertaking of its kind, Gateway Arch Park Foundation (formerly known as CityArchRiver) and the National Park Service sought to transform the Jefferson National Expansion Memorial Park. Seven major projects and dozens of smaller projects have been completed with the goal of building connections to neighboring businesses and communities, enhancing the visitor experience, and reinvigorating the heart of downtown St. Louis.

Challenge

The Jefferson National Expansion Memorial Park, which includes the Gateway Arch, the Old Courthouse, and surrounding historic grounds stretching north, south and west of the Mississippi River had long been isolated from downtown St. Louis. The primary Arch grounds were separated from downtown by a depressed arterial highway. A parking garage located on the north arch grounds held Ranger offices and further isolated the arch experience from surrounding communities and businesses. An accessible path from downtown through the Arch grounds to the riverfront did not exist. Modifications to grounds and structures were necessary in order to provide accessible routes, enhance the visitor experience, and improve connections to the surrounding downtown community.

Role

Amy Gilbertson has held the role of Lead Historic Architect, Principal-in-Charge, and lead designer for the majority of projects under the Master Services Agreement. Her most notable projects under the MSA include improvements to the Old Courthouse, the new Ranger Station on the south grounds, and design for a new Visitor Services Center in Kiener Plaza located west of the Old Courthouse. Collectively, Gilbertson's body of work under the MSA bridges two centuries of historic structures as well as new contemporary architecture successfully brought together to create an improved visitor experience.

Outcome: Old Courthouse

The full interior and exterior renovation project will begin construction in Spring 2022. Scope includes careful insertion of the building's first-ever elevator, full window replacement, complete replacement of the heating and cooling system, a new electrical service and underground transformer, the addition of a fire sprinkler system, complete renovation of exhibit galleries and new wayfinding and signage throughout the building. Creative and innovative solutions for preservation of historic material include plans to provide electrical distribution through an underground bore beneath original foundations so as to maintain integrity of historic material in the foundation walls.

Outcome: Kiener Visitor Services Building

Situated just west of the Old Courthouse grounds, Kiener Plaza was reimaged in 2015 to build greater connection between the Old Courthouse and downtown St. Louis. In 2018, Gilbertson began design efforts for a new Visitor Services Center. Careful consideration of site lines, visitor circulation and the need to draw visitors to and through the plaza led to a purposefully playful and modern design solution. The dynamic design utilizes fins set at varied angles with bright color on one side and a grey color on the other. The varied appearance of these colored fins engages visitors driving movement and activity around the building. Painted precast walls on the west, north and east facades are intended to serve as the backdrop for commissioned mural artwork.

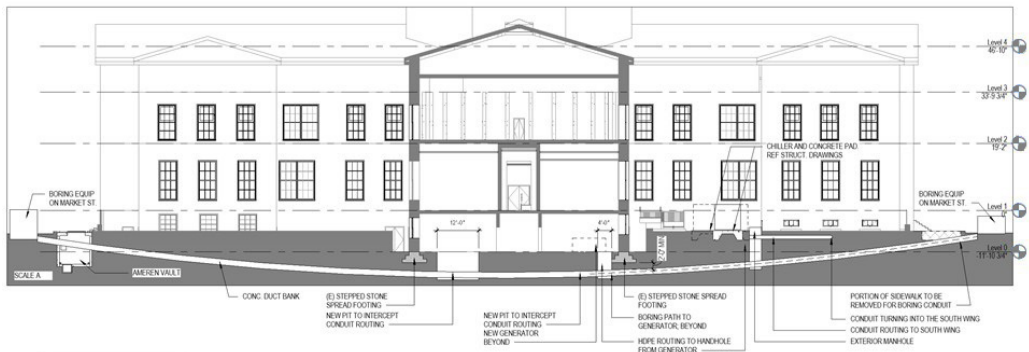
Outcome: Ranger Station

Located on the historic Arch park grounds, the new building is placed between an existing maintenance building and new commuter loop, offering an optimal location for law enforcement to facilitate tactical operations. The design is low in profile and set into a hillside so as not to obscure views of the Arch or otherwise detract from the historic landscape. The new building utilizes similar materials as the adjacent maintenance building with the metal material wrapping the façade to create a more pedestrian scale adjacent to the circulation loop.

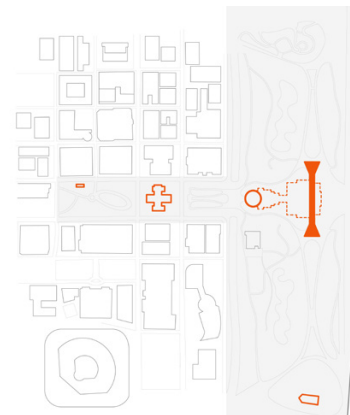
DECLARATION OF RESPONSIBILITY

I have personal knowledge of the nominee's responsibility for the exhibit listed above. That responsibility included: *largely responsible for design*

Anna Leavey, Former Director of Construction (current consultant)
Gateway Arch Park Foundation (client)



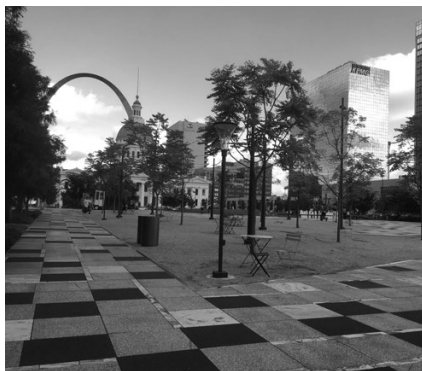
section at old courthouse electrical service boring



jefferson national expansion memorial MSA project locations



kiener visitor services building after construction



kiener plaza before



ranger station site before construction



ranger station and new commuter loop

Location

St. Louis, Missouri

Architecture Firm of Record

Space Architecture + Design

Design Firm

Space Architecture + Design

Completion date

2015

Role of Nominee

Lead Historic Architect

Lead Designer

Missouri SHPO Consultant

Awards

Landmarks Most Enhanced

Publications

5+

"It was a true pleasure working with Amy Gilbertson on the restaurant project Rooster in south city St. Louis. This project was one of the first mid-century modern buildings to receive historic tax credits that was also doubled in size from the original footprint. Amy was a fantastic advocate navigating these new waters to land on a cost effective and sustainable solution for the envelope restoration, while also receiving historic tax credit approval. Her knowledge of the field and management style was great to work with and resulted in an award-winning project that also functions incredibly well for the owner and the patrons that frequent the establishment."

Jassen Johnson

Owner's Representative

Renaissance Development

03 Hamiltonian Federal Savings + Loan Association Building

Built in 1961, the Hamiltonian Federal Savings and Loan Association Building remains a significant example of mid-century modern architecture in St. Louis City. Reimagined as a community restaurant, this long vacant structure now regularly brings community members together while employing local youth.

Challenge

Several unsuccessful attempts had previously been made to redevelop the property. Prior to this project undertaking, a mid-century modern building had not pursued historic tax credits in the State of Missouri which had deterred previous investors. Though the site and original structure were well suited for a restaurant use, the client's kitchen and catering program required an addition nearly the same size as the original building. Due to the structure's prominent location, the surrounding neighborhoods had to be convinced that the proposed use and development would benefit the community.

Role

Amy Gilbertson successfully led consultation efforts with the Missouri State Historic Preservation Office and the National Park Service proving viability of mid-century modern structures to participate in the historic tax credit program. Gilbertson also served as lead designer and lead Historic Architect successfully melding client goals and priorities within the context of the Secretary of the Interior's Standards for Rehabilitation.

Outcome

The project holds the distinction of being the first mid-century modern building in Missouri to have utilized both the state and federal historic tax credit programs. The new addition maintains the height of the original building ensuring that it does not detract from the original construction. In collaboration with the Missouri State Historic Preservation Office, Gilbertson selected a darker material palette for the addition allowing the original red brick to differentiate the demarcation point between old and new. Careful coordination with project engineers ensured the addition maintained a height that matched the original building. Program for the new single-story addition includes additional dining area as well as a state-of-the-art commercial kitchen that serves as a commissary and bakery for the restaurateur's other locations.

Site improvements included removal of a parking area to reduce impervious surface and allow for additional outdoor dining and better connection to the community. New pedestrian circulation creates a clear and accessible path to the primary entry. The expansion of site programming and interior gathering space now draws crowds of community members daily.



south elevation

DECLARATION OF RESPONSIBILITY

I have personal knowledge of the nominee's responsibility for the exhibit listed above. That responsibility included: *largely responsible for design*

Jassen Johnson, Partner

Renaissance Development (owner's representative)



exterior before



exterior after



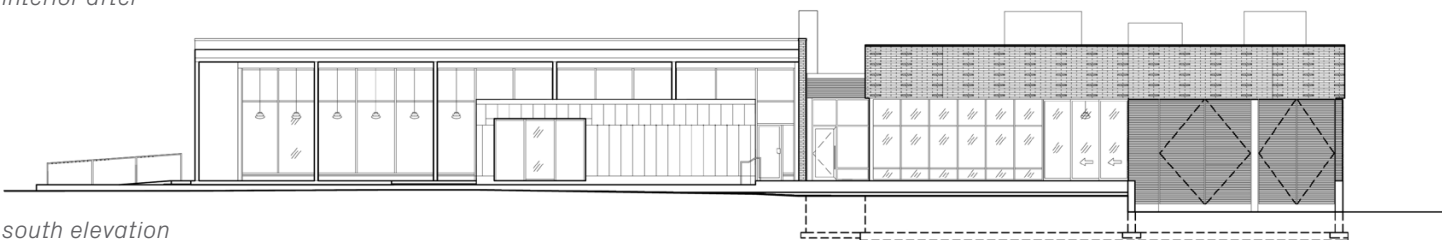
west elevation



east addition, south elevation



interior after



south elevation

Location

St. Louis, Missouri

Architecture Firm of Record

Trivers

Design Firm

Trivers

Completion date

2018, 2021, 2023

Role of NomineeLead Historic Architect
Principal-in-Charge**Awards**

Landmarks Most Enhanced

Publications

10+

“As one of only seven parks in the country designated as a National Historic Landmark, it was essential for us to hire a firm that holds the technical expertise to develop, design, and oversee a project where every detail must be evaluated against the Secretary for the Interior Standards for the Treatment of Historic Properties. Amy Gilbertson was chosen to lead her talented team to rehabilitate several structures and landscapes in the Park. Amy’s knowledge of working with historic structures has enabled these projects to be completed with truly incredible outcomes. Amy’s ability to work with her team, governing bodies, and our stakeholder group have fostered a collaborative environment that has produced great projects, as well as a positive experience for our client team.”

William Reininger
Executive Director
Tower Grove Park



old playground restoration

04 Tower Grove Park Master Services Agreement

Considered to be the best and most complete example of 19th Century urban park design remaining in the United States, the 1868 Tower Grove Park is one of only seven parks designated as a National Historic Landmark. With an estimated one million visitors annually, the park remains an integral part of the surrounding communities and greater St. Louis region.

Challenge

In the decades old National Register nomination, the Period of Significance for Tower Grove Park had generally been stated as “the 19th century”. However, the full vision of the Park’s founder, Henry Shaw, was not realized until the early 20th century with additional land procurement and the construction of several pavilions. Prior to the MSA projects, no clear Treatment Standard had been established as a lens to evaluate modifications to existing structures and potential new buildings. The Park’s new Executive Director, Bill Reininger, had led stakeholders through a master planning process but needed assistance in determining how to thoughtfully make modifications to the park and its structures addressing current community needs while maintaining a reverence for its history.

Role

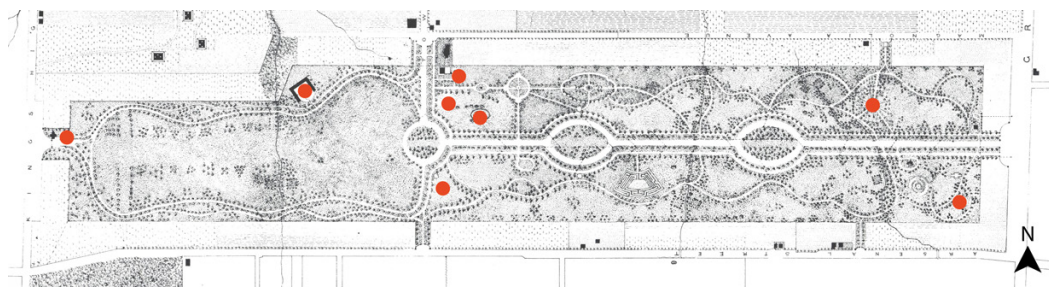
Amy Gilbertson was selected as Lead Historic Architect and Principal-in-Charge engaging in a Master Services Agreement with Tower Grove Park to assist with implementation of their Master Plan. She has led design efforts on all major architectural projects within the park since 2018.

Outcome

Through research and analysis of the Park’s history, Gilbertson led successful consultation efforts with the Missouri State Historic Preservation Office and the National Park Service Midwest Region establishing a distinct Period of Significance (1868 – 1928) and determined that the Secretary of the Interior’s Standards for Rehabilitation were most appropriate in guiding design efforts within the Park. Balancing historic preservation expertise with contemporary design interventions, Gilbertson has led design efforts for multiple projects within the Park securing the Park’s history while establishing new language for modern structures. Selected projects include the following:

- Horse Stable Restoration (original construction 1868, restoration complete 2018)
- Turkish Pavilion Restoration (original construction 1872, restoration complete 2021)
- Old Playground Pavilion Restoration (original construction 1870 – 1872, restoration complete 2021)
- Piper Palm House & Plant House Connector/New Visitor Entry (original construction 1878 & 1885, planned completion 2023)
- New Amenity Building (planned completion 2023)
- New Director’s Residence Support Building (planned completion 2023)

All completed projects as well as those currently under design have been celebrated and supported by local, regional and national historic review agencies.



historic site plan indicating MSA project locations

DECLARATION OF RESPONSIBILITY

I have personal knowledge of the nominee’s responsibility for the exhibit listed above. That responsibility included: *largely responsible for design*

William Reininger, Executive Director
Tower Grove Park (owner)



1868 stable restoration



turkish pavilion before



turkish pavilion during restoration



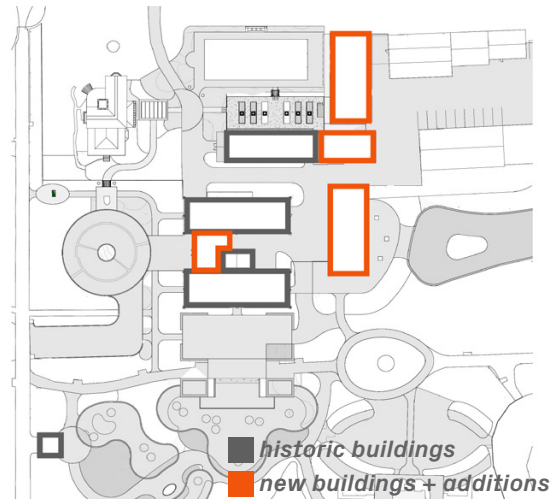
turkish pavilion restoration



turkish pavilion restoration



aerial view of project site



core facilities site plan



new amenity building with proposed event services building with historic piper palm house in the background



new visitor entry addition at historic piper palm and plant houses

Location

St. Louis, Missouri

Architecture Firm of Record

Space Architecture + Design

Design Firm

Space Architecture + Design

Completion date

2008

Role of NomineeLead Historic Architect
Project Architect**Awards**

AIA St. Louis

Publications

3

"Amy delivered a modern adaptation project with a fresh identity for an urban school wrapped in an unoccupied early 20th century bread factory. The design solution called for the removal of portions of the existing upper floor and roof to create a 2-story gymnasium that not only satisfied the programmatic requirements, but also created a unique building entry that allowed the school to connect with the neighborhood in an original way, all while maintaining the original building's identity."

Neil Chace, AIA, WELL AP, LEED GA
Senior Project Manager
Trivers
(formerly with Space Architecture + Design)

05 Imagine Schools Environmental Math + Science Academy

Originally constructed as the Colonial Bread Factory, the building sat vacant for decades. Imagine Schools sought to repurpose the property to provide learning space for K-8 students at this prominent, centralized, urban location.

Challenge

The greatest challenge in creating a school environment at this property involved creating a high-volume space suitable for gymnasium and assembly activities for the entire student body. Due to the existing structural capacity of the building as well as required first floor programming, the gymnasium and assembly area required placement on the second floor.

Role

As Project Architect and lead Historic Architect, Amy Gilbertson led historic consultation efforts and design guidance for creating a new, modern structure within this historic building. In addition, Gilbertson led all design and documentation efforts including consultant coordination for the 150,000 SF renovation.

Outcome

Located on a non-primary façade, the new "addition" within the historic building is created through removal of one-quarter of the third floor including walls and roof. This allowed for insertion of a new metal building clad in translucent panels providing an abundance of natural light to the primary assembly and gymnasium area in the building. Egress was carefully planned and evaluated with local code officials and results in a new and inviting entrance leading directly into the gymnasium space.

Contemporary lighting, new canopies and a new glazed entrance portal accentuate the primary school entrance. New steel structural support has been added to the 3rd level in order to allow for future installation of an intensive green roof and expand learning space with outdoor classrooms.

**DECLARATION OF RESPONSIBILITY**

I have personal knowledge of the nominee's responsibility for the exhibit listed above. That responsibility included: *largely responsible for design*

Neil Chace, AIA, WELL AP, LEED GA, Senior Project Manager
Trivers (former project team member at Space Architecture + Design)



exterior before



exterior after



new gymnasium and event entrance



new assembly space and event entrance



new school entrance



Location

St. Louis, Missouri

Architecture Firm of Record

Trivers

Design Firm

Trivers

Completion date

2020

Role of Nominee

Lead Historic Architect

AwardsRetrofit
Missouri Preservation**Publications**

5+

"Nice job taking a group of dilapidated buildings and creating a nice residential development, as well as weaving the four buildings into a unified whole. Good consistency in detailing."

*Howard Hirsch, AIA, LEED AP
Founder and President
Hirsch MPG LLC
(Juror for 2021 Retrofit
Metamorphosis Awards)*

06 The Georgian

Listed on the National Register of Historic Places, the Georgian site was originally home to the St. Louis City Hospital designed by Albert Groves and constructed in 1905. Despite the demolition of a central building, the integrity of the site and much of the original historic fabric remains today. At the time of this project, four of the original structures remained vacant and in various stages of degradation.

Challenge

At its apex, the buildings in the historic hospital complex were connected with a series of corridors and tunnels. Originally connected by "Building E" which had since been demolished, the existing facades of two primary buildings facing the parking lot and planned for new resident entry, were the remnants of original interior corridors. The design solution required a contemporary and modern solution that would highlight the new building entry while also honoring the building's past.

Role

As Lead Historic Architect, Amy Gilbertson led consultation efforts with the Missouri State Historic Preservation Office and National Park Service. Gilbertson worked with the design team to create a solution that met client vision for a unique residential experience. The design solution unifies the remaining four structures while honoring their original functions and designs.

Outcome

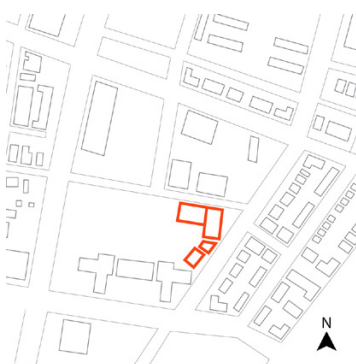
The Services Building, Commissioner Building, Ambulance Garage and Clinic Building now hold 74 apartments as well as amenities for the entire complex. Restoration efforts for primary facades and ornate lobbies paired with contemporary transformation at secondary facades and interiors creates a dynamic balance between old and new.

One of the most unique spaces in the final design resides in the single-story connector building joining the Clinic and the Service Building. The connector possesses a large monitor that floods the space with daylighting and the basement below through a newly cut opening for access to lower level, becoming an inviting building entry and expanding usable programmatic area to the lower level. The exterior south façade expresses the remnants of the ancillary building (Building "E") removed in the early 1970s.

At a site with a rich history and character, the design completes the transformation at the City Hospital Complex.



aerial view



site plan



service connector lobby before



service connector lobby after

DECLARATION OF RESPONSIBILITY

I have personal knowledge of the nominee's responsibility for the exhibit listed above. That responsibility included: *largely responsible for design, historic architect*

Jeff Tegethoff, Owner

Tegethoff Development (building owner during design, construction, and initial occupancy)



service building south exterior before



service building south exterior after



commissioner building east exterior before



commissioner building east exterior after



service building elevator lobby before



service building elevator lobby after

Location

St. Louis, Missouri

Architecture Firm of Record

Trivers

Design Firm

Trivers

Completion date

2006

Role of NomineeHistoric Architect
Project Architect**Awards**National Center for State
Courts
AIA Justice Facilities Review
AIA St. Louis
IIDA
Downtown STL Partnership**Publications**

10+

"...the completion of this building... has raised our level of pride... our confidence about what is possible here in the City of St. Louis."

*Mayor Francis Slay
Rededication Ceremony Speech*

"Amy provided excellent design services for the overall building, as well as the majority of tenant spaces. With an attention to detail that did not lose sight of the big picture, Amy also provided guidance through the labyrinth of historic preservation issues and worked closely with the development team to resolve numerous unanticipated issues that arose during the construction process. The end result is the renovation of a National Monument that will withstand the test of time."

*Gwen Knight
Former VP of Development for
DESCO*



exterior

07 U.S. Customs House + Post Office

Originally constructed in 1872, the building more commonly known as the "Old Post Office" was designated a National Historic Landmark in 1968. At the time of the redevelopment, the Post Office was ranked as the 6th most important structure in GSA's inventory. Of the Second Empire style buildings constructed in the same era, only two remain – this structure and the Executive Office Building in Washington D.C.

Challenge

With the building's significant historic status in the GSA's portfolio, the design had to prioritize preservation and avoid unnecessary adverse impact to the building and its character-defining features while also creating state of the art, contemporary workspace. The project received a great deal of public interest since it occupied an entire block in downtown St. Louis. As a result, stakeholders included many different groups of people ranging from state legislators to the building tenant agencies to the neighboring downtown residents.

Systems installation had to be carefully planned as well in order to preserve clear volume spaces in the most historically significant areas of the building. Past renovations at the building had resulted in lowered ceilings to accommodate ductwork which had caused damage to decorative plaster. Balancing tenant requirements and stakeholder goals and priorities within the project budget and available tenant funding was critical to reaching consensus on a buildable project.

Role

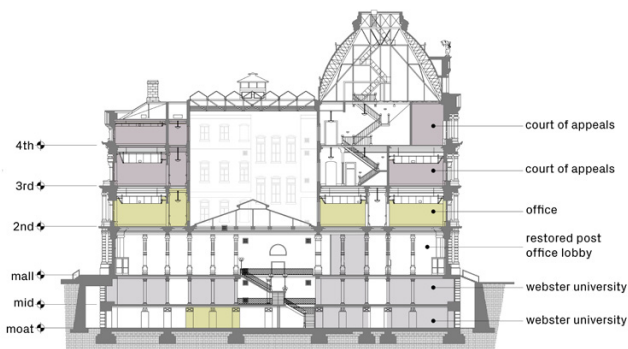
Amy Gilbertson led design for the Missouri Court of Appeals, Eastern District as well as public lobby and amenity areas located on the Mall (street) level. Her work encompassed all of the primary areas of historic importance within the building. Gilbertson worked in close collaboration with the property developers to communicate design intent and gain support of the local community as well as state and federal legislators.

Outcome

The Court of Appeals now occupies the top two floors, revitalizing the two original historic primary courtrooms. Gilbertson led design efforts to create contemporary security and circulation improvements balanced with preserving and enhancing the most significant historic areas of the building.

Security improvements include contemporary glass partitions at the stair wells and at ends of corridors where necessary. A narrow profile steel storefront system minimized the appearance of the intervention while preserving the look and volume of the original design creating a clear distinction between new and original construction. Careful and intensive planning of the third floor layout resulted in only one new opening in a historic partition to meet the strict public and private circulation required by the courts.

Building systems were carefully planned in order to recreate historic clear volume areas in the most significant areas of the building. Both historic courtrooms have been restored to their original volumes. The primary courtroom has become the Court of Appeal's "en banc" courtroom with a custom bench designed to be compatible with remaining historic fabric.

**DECLARATION OF RESPONSIBILITY**

I have personal knowledge of the nominee's responsibility for the exhibit listed above. That responsibility included: *largely responsible for design (Missouri Court of Appeals)*

Gwen Knight, Senior Vice President
Collier's International (former VP of Development for DESCO)



exterior



second floor corridor before



second floor corridor after



courtroom before



courtroom after with custom en banc judicial bench

Location

Salt Lake City, Utah

Architecture Firm of Record

HOK

Design Firm

HOK

Completion date

2024

Role of Nominee

Lead Historic Architect

Publications

3

"Again, many thanks to you [Amy Gilbertson] and your team for yesterday's presentation on Moss. I'll echo again here just how comprehensive it was, how one felt intimately familiar with the building and its elements through your visual and vocal descriptions, and how it was emphasized throughout just how much was being recaptured in this building. From the GSA business perspective also, the underscoring of tenant requirements and our need to accommodate tenants in order to maintain occupancy -- and therefore maintain buildings like Moss -- in the federal inventory. Remarkable the level of thought that's gone in to intervening to such an extent to seismically stabilize this building and yet effectively enhance its character AND function."

Joan Brierton
Senior Preservation Specialist
US General Services
Administration
GSA Central Office



building exterior

08 Frank E. Moss U.S. Courthouse

The Frank E. Moss U.S. Courthouse (originally known as the U.S. Post Office & Courthouse) is the oldest building in Salt Lake City's Exchange Place Historic District. Today, it holds the distinction of being the most "at risk" structure in the General Service Administration's portfolio due to its vulnerability during a seismic event.

Challenge

Structural modeling has proven the need for extensive seismic retrofitting. The design team is working in close collaboration to preserve the character-defining features of the building which includes original materials as well as the original volume of the Level 1 Preservation Zones while making the necessary structural improvements to ensure the building can withstand a seismic event. In addition, preservation must be balanced with new tenant agency requirements for program and security and a desire for Class A workspace.

The design team is charged with creating an award-winning project which embraces the ethos of design excellence, balances preservation and advanced technology, and exhibits a high degree of ingenuity and creativity.

Role

As Lead Historic Architect, Amy Gilbertson works closely with all design team partners to develop holistic strategies for improvements within the building including areas of preservation as well as modern improvements. Gilbertson led the team through an intensive study of the original design and existing conditions which resulted in a multitude of recommended updates to the Preservation Zone Plans. Her recommendations were unanimously approved by GSA and the Utah State Historic Preservation Office. In addition, Gilbertson has successfully led consultation efforts with local, state, and national stakeholders.

Outcome

As the design has progressed, GSA led Peer Review presentations and discussions have been met with increasing excitement regarding the design team's intensive and collaborative efforts to find innovative and creative solutions for the project priorities of seismic retrofit and historic preservation. All external design discussions with the Utah State Historic Preservation Office as well as GSA Central Office historic reviewers have been received with full support and approval of proposed design solutions. When complete, the full building renovation will celebrate the building's past while embracing contemporary interventions.



exterior rendering

DECLARATION OF RESPONSIBILITY

I have personal knowledge of the nominee's responsibility for the exhibit listed above. That responsibility included: *largely responsible for design, historic architect*

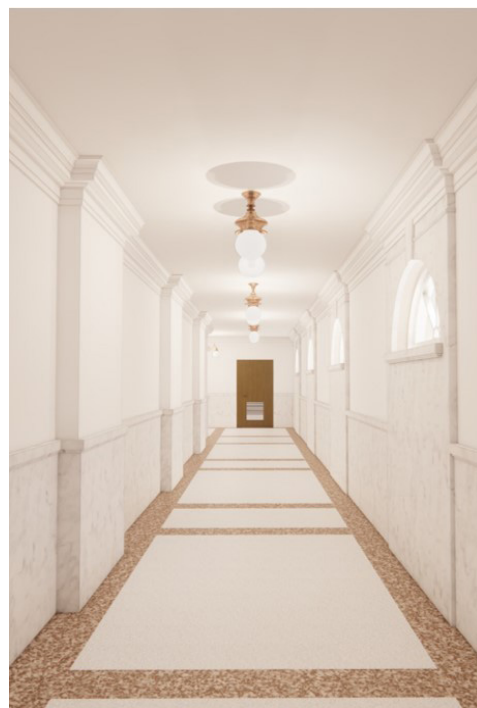
Jason Sielcken, Region 8 Chief Architect, Senior Project Manager
US General Services Administration (owner/client)



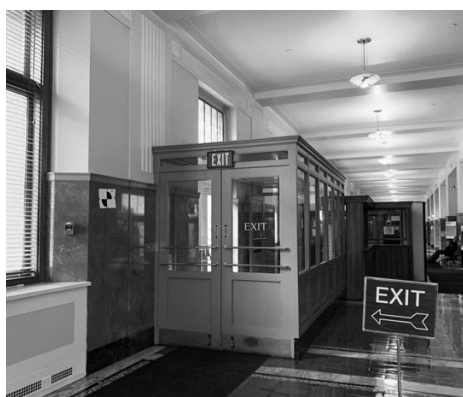
corridor circa 1905



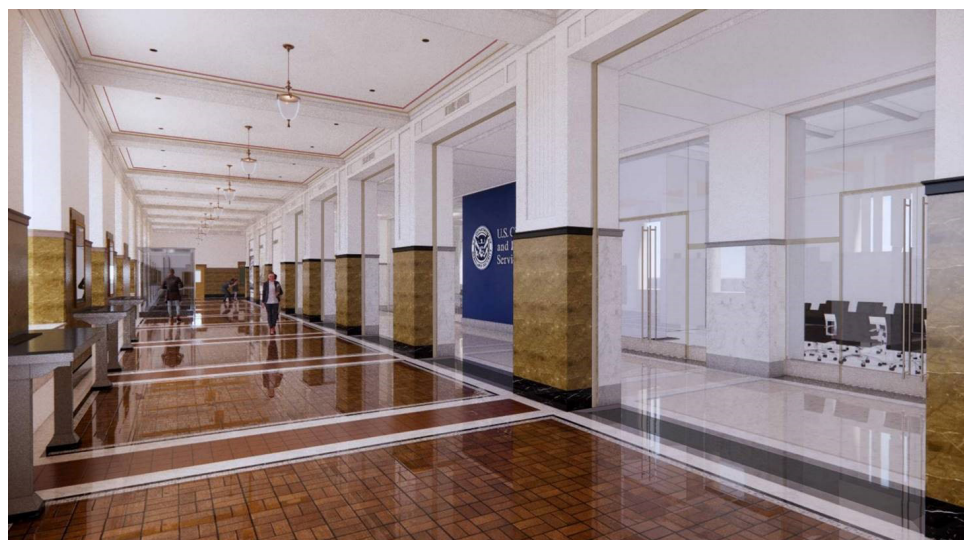
existing conditions



proposed design



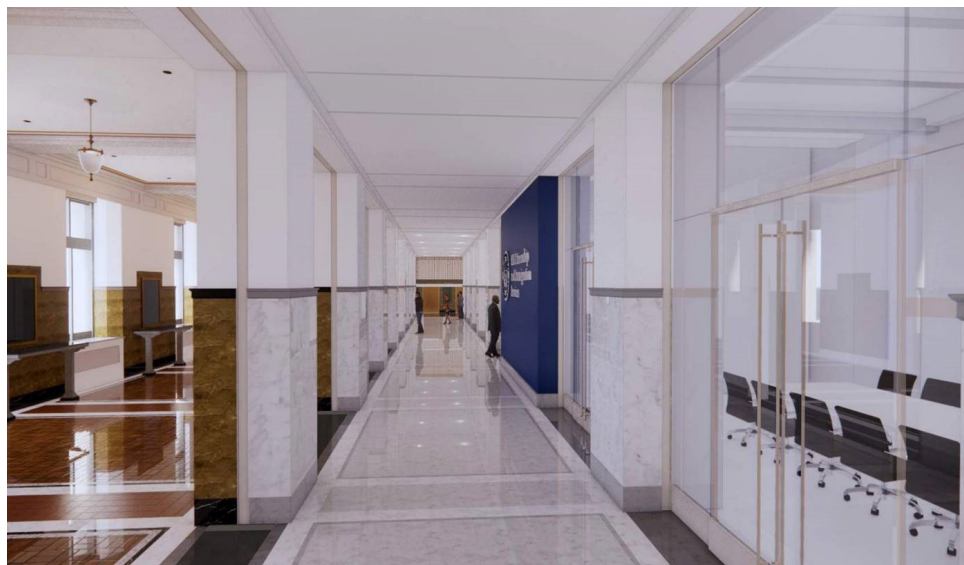
lobby corridor before



lobby rendering

“As lead historic architect on the Moss Seismic Renovation, I am completely impressed with the work done by Trivers and Amy Gilbertson specifically. This team is very thorough, diligent and detail oriented. They uncovered historic spaces and materials in our building that had never been previously identified. They always have the best interest of the significant materials and spaces in mind, while acknowledging the need for sympathetic modern interventions to keep the buildings viable. “

*Andrea Collins, Regional Historic Preservation Officer
US General Services Administration*



gallery rendering

Locations

Marion, Arkansas
 New Haven, Connecticut
 Indianapolis, Indiana
 Sedalia, Missouri
 St. Louis, Missouri
 University City, Missouri
 Providence, Rhode Island
 Salt Lake City, Utah

Architecture Firm of Record

Trivers

Design Firm

Trivers

Completion date

2022

Role of Nominee

Historic Architect

Publications

5+

"Amy,
 Thank you for the terrific job on the ... Crittenden County Courthouse Facility Assessment. I am very impressed with your work on this, and you have laid out the issues and plan of action in easy-to-understand terms. ... Thank you again very much for all your hard work on this. We greatly appreciate it!"

Paul Porter
 Technical Services Coordinator
 Arkansas Historic Preservation Program

**09 Historic Building Planning Tools****Challenge**

Historic properties inevitably require updates, modifications, and additions in order to maintain viability. Understanding that building property owners need guidance as they contemplate modifications to historic properties, Amy Gilbertson has worked to develop planning tools that offer clear guidance for those undertaking design and construction work at historic properties.

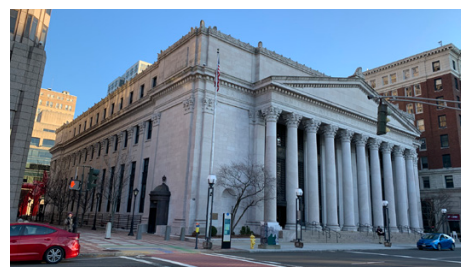
Role

Gilbertson has worked with clients located throughout the country to develop tools that enable a deeper understanding of historic properties while also offering clear guidance and flexibility for planning improvements. Rather than simply offering an analysis of existing conditions as might be more typical for a "facility assessment", Gilbertson infuses historical research and analysis to offer building owners an understanding of character-defining features, prioritization of areas for preservation and opportunities for full renovation, as well as planning for future additions. The result is a document that can be utilized by facility managers, other architects undertaking work at the property, and even elected officials giving confidence to the general public that the structures that are part of a community's legacy are being properly sustained.

Outcome

Assisting local municipalities, the federal government and non-profit building owners, Gilbertson has authored the following planning documents:

- 2018 Sedalia, Missouri
Pettis County Courthouse
- 2020 Marion, Arkansas
Crittenden County Courthouse
- 2021 University City, Missouri
City Hall Annex
- 2021 St. Louis, Missouri
Piper Palm House + Plant House
- 2021 New Haven, Connecticut
Richard C. Lee U.S. Courthouse
- 2022 Providence, Rhode Island
Providence Federal Building
Pastore Federal Building
- 2022 Indianapolis, Indiana
Bean Federal Center
- 2022 Salt Lake City, Utah
Frank E. Moss Federal Building



richard c. lee us courthouse



mgej bean federal center



piper palm house



providence federal bldg + us courthouse

DECLARATION OF RESPONSIBILITY

I have personal knowledge of the nominee's responsibility for the exhibit listed above. That responsibility included: *largely responsible for design*

Joe Brinkmann, AIA, Principal
 Trivers (business partner)

Locations

St. Louis, Missouri
Ann Arbor, Michigan

Architecture Firm of Record
NA**Design Firm**

Trivers
Space Architecture + Design

Completion date

2001- present

Role of Nominee

Mentor, educator, leader

Awards

AIA Central States EP
Friendly Firm Award (2)

Publications

5+

"Amy introduced us to a multitude of topics within the profession of architecture and expanded what it means to be an 'architect' in my mind."

"Best class ever! This class is literally my motivation to wake up every Friday morning."

"Amy thoughtfully developed a course that shed light on many things we wouldn't be learning otherwise. Through outside guests and the lectures that followed we were able to grasp difficult content."

"This teacher is one of the best teachers I have had at Wash U's architecture school. Not only is this teacher very caring of her students, she is also extremely knowledgeable and well connected in the industry. Strongly recommend to anyone who is serious about becoming an architect."

"I still don't know how it's possible but Amy expertly managed being a principal of a thriving architecture firm, a mother of a plethora of children, and teach at the same time! With all of that being true, I never felt like an after thought. This class should be taught every year with Amy always at the helm."

*Anonymous student comments
Washington University Sam Fox
School of Architecture*

10 Mentorship + Education**Education**

Whether engaging inner-city public school elementary students or graduate level students at the University level, Gilbertson accepts any opportunity to offer insight into the profession and the opportunities offered by an architectural career path.

2017 - 2020	Created and taught a class for Washington University Sam Fox School of Architecture for the graduate program focused on developing leadership and practice skillsets essential to successful careers in the architecture field.
2020	Served as a guest speaker for a University of Michigan Taubman College Professional Practice course
2020	Guest educator for a Washington University McKelvey College of Engineering course on leadership
2019, 2021	Lafayette Preparatory Academy guest educator
2019 - 2020	USGBC Green School Mentor
2019	Panelist for the University of Michigan Taubman College of Architecture + Urban Planning Recruiting + Retention Alumni Panel and Webinar
2014	St. Louis Language Immersion School construction site visit
2013 - 2015	St. Louis Language Immersion Schools guest educator

Mentorship

Amy has a deep interest in advocating and advancing opportunities for women in the field of architecture. She is passionate about developing both racial and gender diversity and seeks out all opportunities to support the next generation of leaders in our profession.

2011 - present	Regularly participates in AIA STL Women in Architecture events and the AIA STL Mentorship program.
2017 - present	Serves on BD+C's Women in Design + Construction Advisory Council and has been a featured speaker twice at the WID+C national conference.
2019 - present	Elected to the University of Michigan Taubman Alumni Council, Amy serves as Chair of the Membership Committee. Through this role, she provides mentorship and networking for current students and has also worked to improve diverse representation for the Alumni Council itself to better serve the Alumni and student body at Taubman.

Mentorship through Firm Leadership

Since becoming Principal in 2015, Amy has worked to improve retention and diversity at Trivers.

2021	Created transparency tool for the office combining AIA Guides for Equitable Practice with JUST label measurements identifying strengths, weaknesses and priority focus areas for improvement
2021	Created website landing page for EDI
2019, 2020	AIA Central States Emerging Professional Friendly Firm Award
2019	Led efforts to achieve JUST label certification (first company in Missouri to do so)
2019	Created the firm's first Equity, Diversity, and Inclusion committee
2017	Led efforts to become a Mosaic Ambassador company supporting the immigrant population in St. Louis
2016 - present	Implemented new policies to improve retention and employee engagement

DECLARATION OF RESPONSIBILITY

I have personal knowledge of the nominee's responsibility for the exhibit listed above. That responsibility included: *other (creator of class content, Principal-in-Charge of mentorship + EDI activities)*

Joe Brinkmann, AIA, Principal
Trivers (business partner)

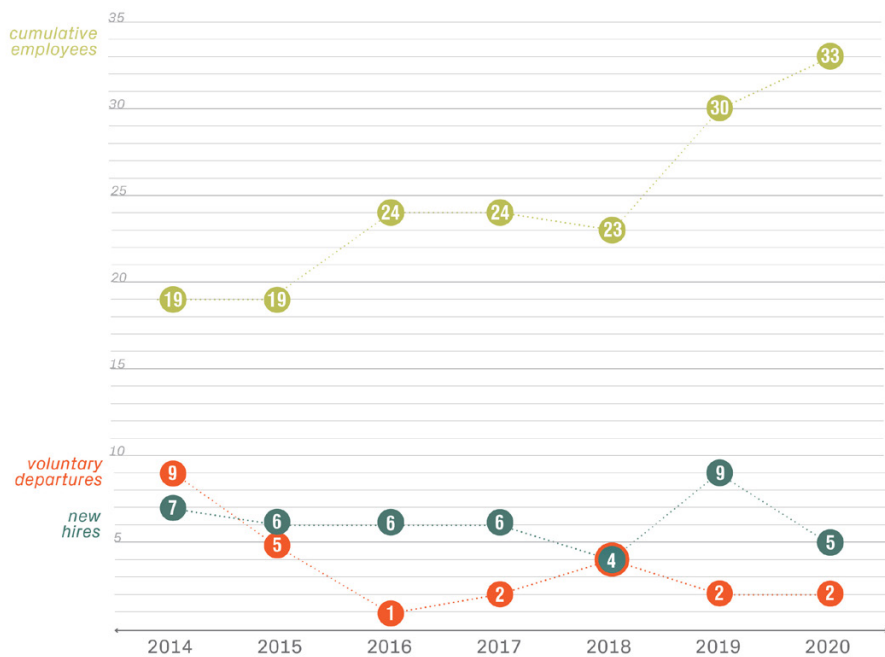


architect as entrepreneur and leader class



green schools quest, lafayette prep academy, group work

Company Retention



trivers retention, 2014-2020

Just.

Organization Name: Trivers
Organization Type: Architecture
Headquarters: St. Louis, Missouri
Satellite Facilities: 1
Number of Employees: 30

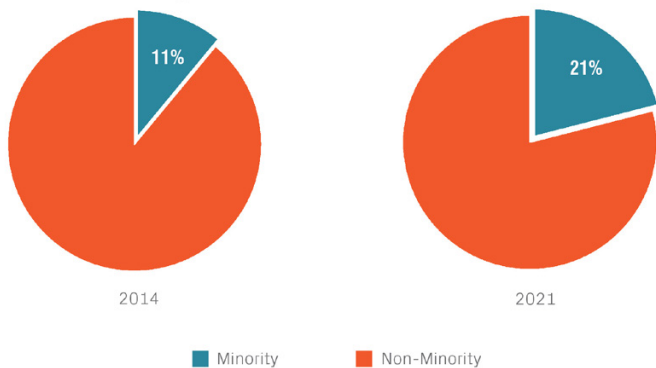
Social Justice and Equity Indicators:

Diversity <input checked="" type="checkbox"/> Non-Discrimination <input checked="" type="checkbox"/> Gender Diversity <input type="checkbox"/> Ethnic Diversity	Worker Benefit <input checked="" type="checkbox"/> Worker Happiness <input type="checkbox"/> Employee Benefit <input checked="" type="checkbox"/> Continuing Education
Equity <input checked="" type="checkbox"/> Full Time Employment <input type="checkbox"/> Pay-Scale Equity <input checked="" type="checkbox"/> Union Friendly <input type="checkbox"/> Living Wage <input type="checkbox"/> Gender Pay Equity <input checked="" type="checkbox"/> Family Friendly	Local Benefit <input checked="" type="checkbox"/> Local Control <input checked="" type="checkbox"/> Local Sourcing
Safety <input checked="" type="checkbox"/> Occupational Safety <input type="checkbox"/> Hazardous Chemicals	Stewardship <input checked="" type="checkbox"/> Responsible Investing <input type="checkbox"/> Community Volunteering <input type="checkbox"/> Positive Products <input checked="" type="checkbox"/> Charitable Giving <input type="checkbox"/> Animal Welfare <input type="checkbox"/> Transparency

THE SOCIAL JUSTICE LABEL
 TRI-001 EXP. 11/15/2021
INTERNATIONAL LIVING FUTURE INSTITUTE™

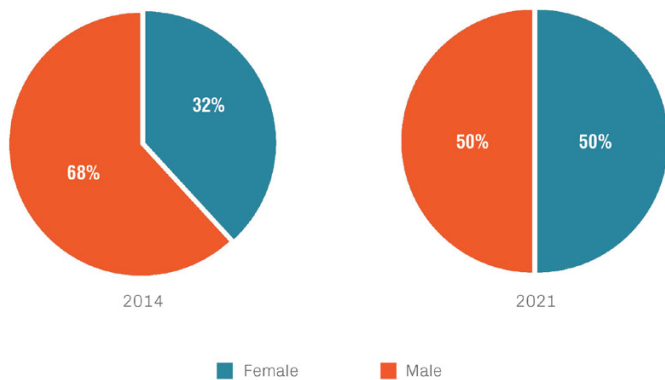
just label

Minority Representation



minority representation at trivers, 2014-2021

Gender Diversity



gender diversity at trivers, 2014-2021