



Architecture Billings Index (ABI)

November 2021

The Architecture Billings Index (ABI) is a diffusion index derived from the monthly Work-on-the-Boards survey, conducted by the AIA Economics & Market Research Group. The ABI serves as a leading economic indicator that leads nonresidential construction activity by approximately 9-12 months. The survey panel asks participants whether their billings increased, decreased, or stayed the same in the month that just ended. According to the proportion of respondents choosing each option, a score is generated, which represents an index value for each month. An index score of 50 represents no change in firm billings from the previous month, a score above 50 indicates an increase in firm billings from the previous month, and a score below 50 indicates a decline in firm billings from the previous month.

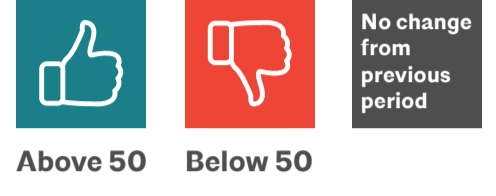
*All graphs represent data from November 2020–November 2021.

ABI

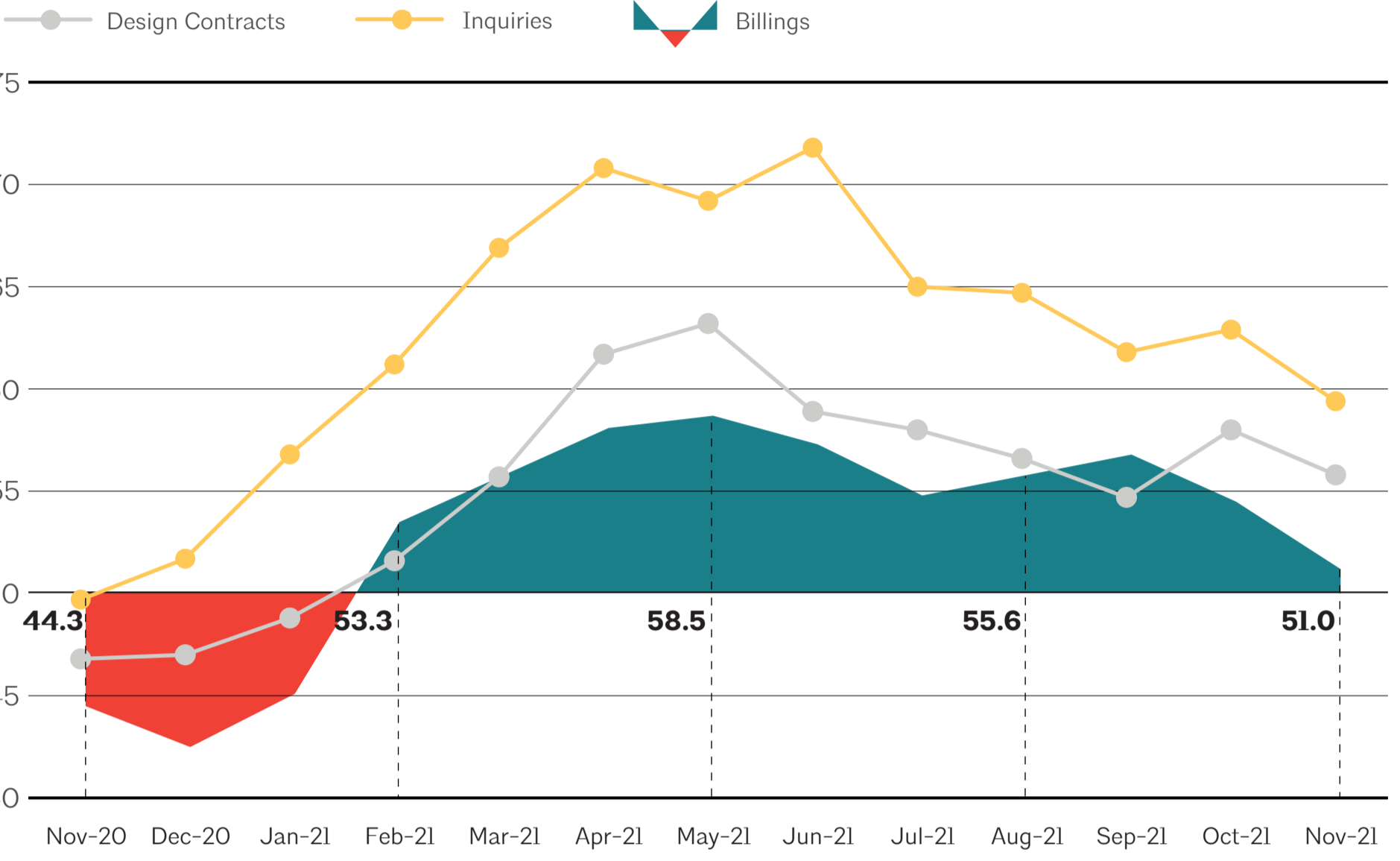
National Regional Sector Practice

National

Pace of billings growth slows at architecture firms in November



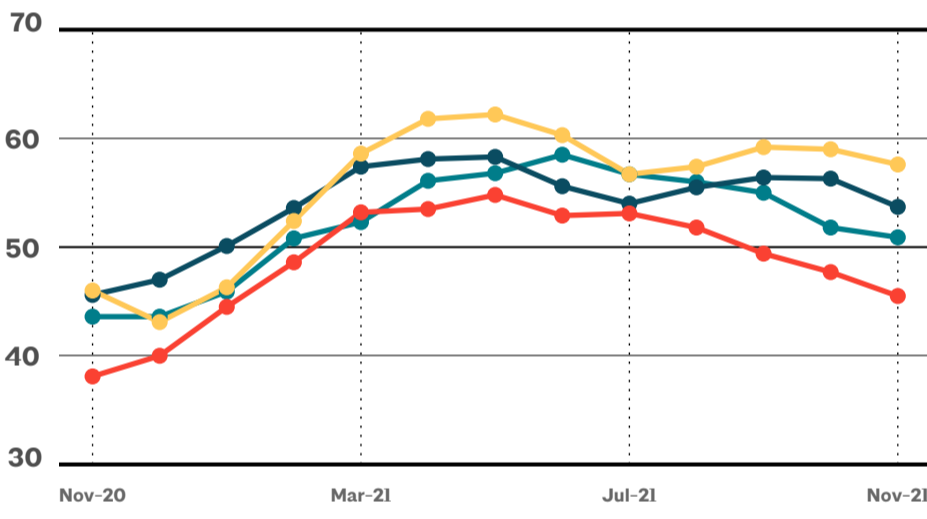
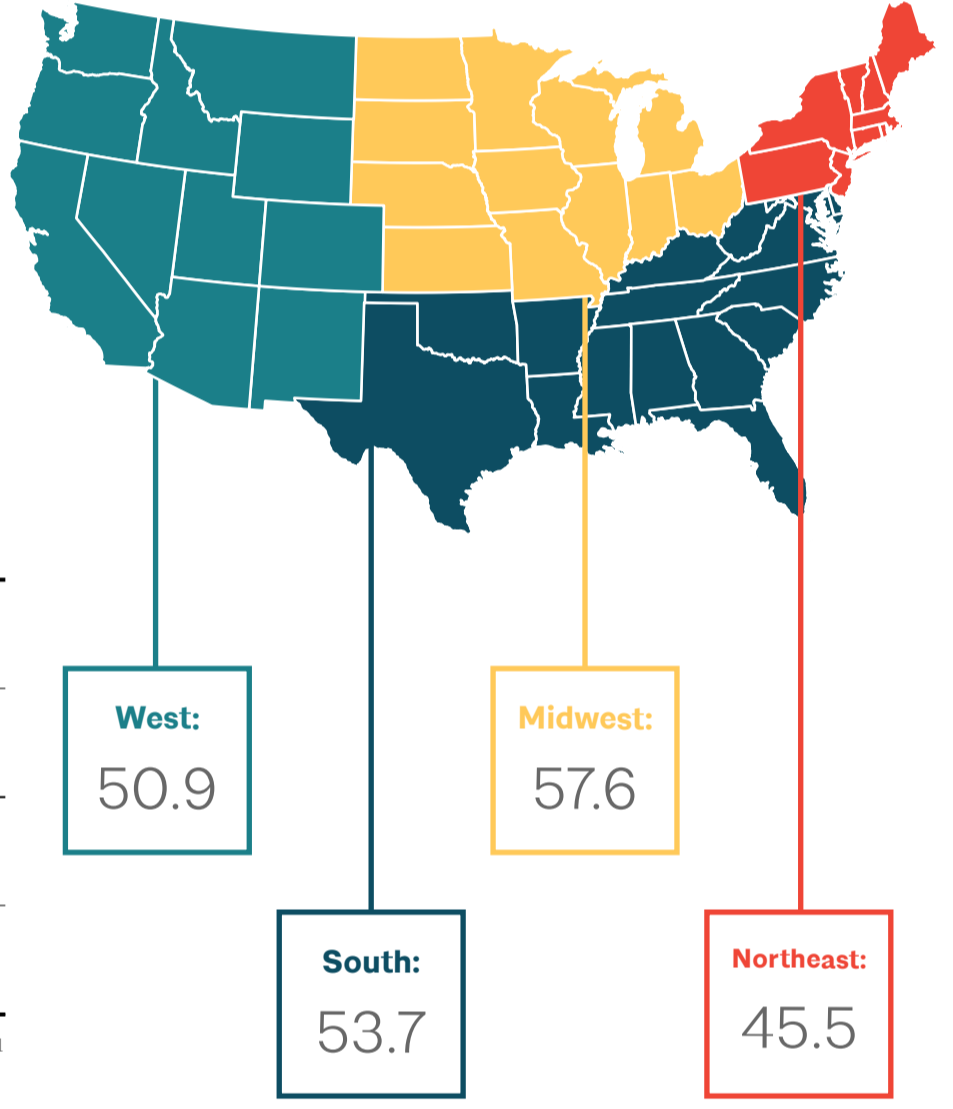
Graphs represent data from November 2020–November 2021.



Regional

Business conditions decline further at firms in Northeast, remain strong in Midwest

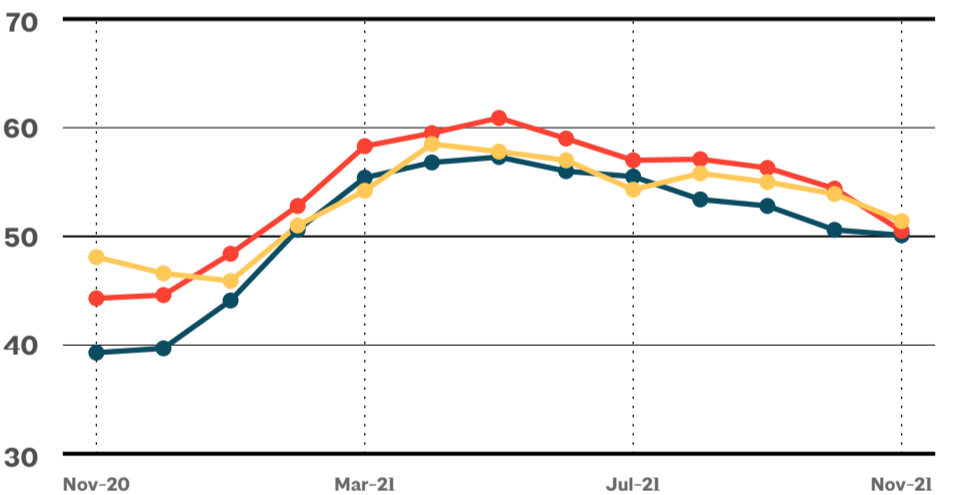
Graphs represent data from November 2020–November 2021 across the four regions. 50 represents the diffusion center. A score of 50 equals no change from the previous month. Above 50 shows increase; Below 50 shows decrease. 3-month moving average.



Sector

Modest growth reported at firms of all specializations

Graphs represent data from November 2020–November 2021 across the three sectors. 50 represents the diffusion center. A score of 50 equals no change from the previous month. Above 50 shows increase; Below 50 shows decrease. 3-month moving average.



Practice

Firms remain most concerned about firm and project management issues for 2022, but staffing concerns are rising

units: % of firms selecting issue as one of their top three business-related concerns for 2022

