

This cover section is produced by the AIA Archives to show information from the online submission form. It is not part of the pdf submission upload.

Institute Honors and Awards **Fellowship**



THE AMERICAN
INSTITUTE
OF ARCHITECTS

2017 AIA Fellowship

Nominee Daniel R. Kenney
Organization Page Southerland Page
Location San Francisco, CA
Chapter AIA San Francisco

Category of Nomination

Category One - Urban Design

Summary Statement

Through his ideas, practice, and influential book, Dan Kenney has transformed the role of planning and urban design, both nationally and internationally, as an engine for creating great university campuses and livable, sustainable cities.

Education

University of Pennsylvania, School of Design, Philadelphia, PA, 2 years, Master of Architecture in Urban Design

University of Pennsylvania, School of Design, Philadelphia, PA, 2 years, Master of City Planning

University of Colorado, Boulder, CA, 5 years, Bachelor of Architecture, with Honors

Licensed in: Massachusetts, Texas, Rhode Island (in renewal process)

Employment

Page Southerland Page, Inc., December 2014 to present, approximately 2 years

Sasaki Associates, Inc., August 1974 to December 2014, over 40 years

Leo S. Wou & Associates, August 1971 to July 1972, 2 years

September 26, 2016

Mary Katherine Lanzillotta, FAIA
Chair, Jury of Fellows
The American Institute of Architects
1735 New York Avenue, NW
Washington, DC 20006-5292

Dear Ms. Lanzillotta:

It is my great honor to sponsor Dan Kenney who has been nominated by AIA San Francisco for 2017 fellowship. Simply stated, Dan is a premier planner and urban designer of his generation. His contributions to revitalizing cities, advancing the rapidly developing practice of campus planning and promoting the integration of campuses with their cities will leave a lasting legacy.

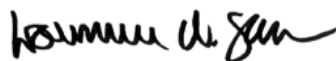
Dan has been a powerful advocate for the kind of integrated mixed-use urban design that has had such a positive effect on creating vital, lively urban environments world-wide over the last decades. He has helped pioneer a movement toward healthy, sustainable cities that are community focused and pedestrian oriented. His work in integrating "new-economy" entrepreneurial businesses and organizations into this movement has been particularly effective and has earned him an esteemed position as an innovator and thought leader.

Dan's twenty years heading Sasaki's higher education studio gave him the opportunity to leverage the extraordinary reputation of that marquis planning firm to create groundbreaking directions in campus planning. Working for universities, both in the U.S. and abroad, he has been able to gain an extraordinary perspective on how the physical environment can profoundly affect the rapidly changing higher education institutions of the twenty-first century.

Dan's landmark book on campus planning, *Mission and Place: Strengthening Learning and Community through Campus Design*, marked an opportunity to share his collected insights with both fellow professionals and university administrators. Along with his other publications and a long list of talks, interviews and panels, the book has been a generous means of extending Dan's influence well beyond his professional work. Similarly, the acknowledgement of so many of his projects with national and international design awards have made them models for other professionals to learn from and to use in advancing their own work.

These impressive credentials, along with an unflagging commitment to his profession for more than forty years, make Dan Kenney an ideal candidate for fellowship in the AIA.

Kind regards,



Lawrence W. Speck, FAIA
2005 Chair, Jury of Fellows

Through his ideas, practice, and influential book, Dan Kenney has transformed the role of planning and urban design, both nationally and internationally, as an engine for creating great university campuses and livable, sustainable cities.

An internationally recognized and respected leader in urban design and campus planning, Dan Kenney collaborates with civic and higher-education leaders around the world to create lively, welcoming places that stimulate innovation and revitalization, enriching people's lives. He has spearheaded the design of more than ninety-five community-enhancing campus plans that inspire learning and collaboration. His strategic thinking and leadership in urban design are manifested in groundbreaking designs that revitalize waterfronts, downtowns, and complex urban environments in more than forty cities worldwide. Throughout his career, Dan has exhibited the highest level of thought leadership, contribution to society, and commitment to excellence, as evidenced by numerous regional and national design awards.

Theme 1: Revitalizing Cities

Working with government and community leaders, Dan has created groundbreaking urban design strategies to shape successful urban places within cities, integrating physical, social, political, and economic forces. As a principal and team leader, his visionary design concepts guide the transformation of city districts and urban waterfronts into new mixed-use neighborhoods, in which architecture plays a key role in defining the public realm, creating vibrant public places and open spaces. Dan's passion for the quality of urban life and a sustainable future can be seen in his visionary urban infill and revitalization plans for cities as diverse as Detroit, Michigan; Providence, Rhode Island; Portland, Oregon; Austin, Texas; and Zurich, Switzerland.

Theme 2: Advancing Knowledge and Practice in Campus Planning and Design

In his forty-year career, twenty as leader of Sasaki's higher education studio, Dan has advanced integrated planning and connected physical campus

designs with student success, balancing academic and research needs and the institution's financial resources.

He is the lead author of the seminal book, *Mission and Place: Strengthening Learning and Community through Campus Design*, published by the American Council on Education, the nonprofit organization of college and university presidents and other campus leaders. The book articulates the importance of planning, urban design, and architecture to higher education, and has been used as a graduate text in numerous universities, including the University of Pennsylvania, the University of Georgia, and Harvard University.

Dan initiated and implemented the Society of College and University Planners (SCUP) Chapman Prize for research on the impact of campus design on higher education, which has led to significant new knowledge in that field. Dan was also the first chair of the SCUP Advancement Committee, which raised funds to endow the first six SCUP Fellows' research. He has shared his knowledge by teaching campus planning and sustainability at the Harvard University Graduate School of Design's Office of Executive Education and has also taught urban design at the Boston Architectural College.

Theme 3: Integrating the Campus and the City

Applying his deep insight and experience with institutions and with cities, Dan has forged new win-win development frameworks to regenerate and strengthen both. His leadership on award-winning urban campus master plans for Portland State University, Auraria Higher Education Center in Denver, the University of Texas at Austin, and Singapore Management University created vital, innovative places that improve the lives of the people using them, provide a resource for creativity

and learning, promote urban revitalization, and build stronger campus-city connections. Dan is a founding member of the Urban Land Institute's University Development and Innovation Council, which explores the role of higher education institutions in partnership with their host cities in urban revitalization and economic development.

Theme 4: Creating Innovation Communities

Dan pioneered the replacement of traditional university research parks—suburban districts with sprawling research campuses—with a more sustainable model integrated into the city that stimulates economic growth and revitalization. In his innovative projects for North Carolina's Piedmont Triad Research Park and Detroit's TechTown District, Dan's vision for a twenty-first-century model innovation community fosters diversity, collaboration, innovation, and creativity.

Theme 5: Fostering Community Engagement Using Advanced Software Tools

Dan's ability to shape a vision, craft a strategy, and execute solutions has led to a distinctive planning process that is both collaborative and data-driven. He participated in the development of customized software to inform the design process while enhancing community engagement through web-based, mobile-device-enabled, interactive data visualization and decision-support tools. Whether for a campus or a city, the tools capture how people engage with their environment in graphic and map-based formats. Dan's teams also use them to work interactively with clients and their constituencies to make program and space decisions in real time.

2.1 ACCOMPLISHMENTS | Significant Work

Theme 1: Revitalizing Cities

TechTown Master Plan *Detroit, Michigan*



Dan led the urban-design strategy that leveraged the potential of institutional anchors within the 149-acre TechTown district, currently replete with underutilized structures and surface parking lots. He created a framework that connects innovation clusters with a cohesive open space network, building reuse, and infill structures. The plan repurposes the historic building stock with uses that promote entrepreneurship and create vibrancy, and strengthens connections within Midtown Detroit and beyond.

Rochester Downtown Master Plan *Rochester, Minnesota*



The 2010 Rochester Downtown Master Plan, led by Dan, captures the spirit of a unique partnership between the city of Rochester, Mayo Clinic, University of Minnesota Rochester, Rochester Downtown Association, and the Rochester Area Foundation. The plan establishes a strong and sustainable framework of open space, streets, alternative transportation, and an engaging public realm that forms a foundation for the implementation of projects that have revitalized downtown and set a national precedent for the level of stakeholder collaboration.

Dallas Arts District Master Plan *Dallas, Texas*



With planning leadership from Dan, the Dallas Arts District Master Plan provided an urban design framework for private and public investment and visionary design of the public realm in a pivotal underutilized seventeen-block section of downtown Dallas. Implementation of the plan over three decades has led to an internationally recognized center of art and culture in the heart of downtown Dallas. The development of the Dallas Arts District has had far-reaching revitalization impact on downtown and the adjacent uptown neighborhood.

Lowry Airforce Base Reuse Plan *Denver, Colorado*



Closure of the Lowry Airforce Base provided a challenge of transforming a military base, with its institutional character, into a vital and dynamic new urban community. As principal in charge, Dan guided the development of a bold vision for a sustainable new community close to the heart of Denver. Redevelopment of Lowry has not only led to the development of a new vital neighborhood, but has also been recognized as one of the most successful models of military base reuse.

Texas Capitol Complex Master Plan *Austin, Texas*



Adopted by the Texas Legislature in 2015, the Texas Capitol Complex Master Plan for the forty-block state capitol complex in downtown Austin outlines a strategic vision and long-term development plan for the most prominent site in the state of Texas. The design team led by Dan developed three guiding concepts: a new Cultural Gateway and Texas Mall approaching the capitol grounds; well-designed east/west connectors with strong pedestrian and vehicular roles; and the establishment of a garden precinct around a cluster of notable historic structures.

Taipei Terminal Master Plan *Taipei, Taiwan*



The Taipei Terminal Master Plan provides an urban-design framework for the Taipei World Financial Center with a new transit-oriented mixed-use development. It includes the creation of new civic open space, enhanced waterfront access, and celebration and preservation of the historic city gate. The plan calls for an icon tower building, the tallest building in the world until 2010. Dan guided the development of the plan, orchestrating the work of an interdisciplinary team and managing complex infrastructure and planning issues and integrating divergent community input.

2.1 ACCOMPLISHMENTS | Significant Work

Theme 1: Revitalizing Cities

Narragansett Landing Master Plan *Providence, Rhode Island*



Building public support for the transformation of Providence's waterfront from a heavy industrial area to a vibrant mixed-use community required the creation of a compelling plan for new development and public open space with access to the waterfront. As principal in charge, Dan led an interdisciplinary team in creating a vision that won support for the project among property owners and other constituencies in the city.

San Antonio Canal District Master Plan *San Juan, Puerto Rico*



The design Dan and his team developed, working closely with the Puerto Rico Port Authority, addressed the challenge of leveraging and enhancing cruise-ship visitor activity while continuing to provide ship security and meeting servicing requirements. This master plan has guided the transformation of a twenty-one block area of the San Antonio Canal waterfront into an entire neighborhood that features shopping, dining, hotels, housing, parks, trails, and a stunning waterfront esplanade.

Colgate Palmolive Hudson River Master Plan *Hoboken, New Jersey*



Located across from New York's financial district, the Colgate Palmolive company aspired to redevelop its industrial property as a new mixed-use financial center. The Master Plan extends the Hoboken city grid to the waterfront, for the first time providing public access to the waterfront along a new waterfront park and promenade. The plan created by Dan and his team has met pent-up demand for office space and residential use in close proximity to New York City.

Rising Thailand Master Plan *Bangkok, Thailand*



Symbolizing the rise of Thailand as a business and financial center in Southeast Asia, the design for the redevelopment of an underutilized government property captures the spirit of Thailand with three ascending mixed-use landmark towers. A significant new public park at the base of the towers provides much needed open space for Bangkok citizens. Inspired by Thai tradition and culture, Dan guided the design team in creating a plan that is at once forward-looking, yet respectful of local context.

Puerto Rico Convention District (Americas World Trade Center) Master Plan *San Juan, Puerto Rico*



The Puerto Rico Convention District is in a 113-acre area located in the heart of San Juan. The Master Plan transforms the former site of the Miramar Naval and Coast Guard Base into a new community with residential areas, offices, commercial space, entertainment venues, as well as civic and cultural facilities. It builds on a site location between the Condado and Old San Juan by extending the San Antonio Canal with a pedestrian promenade leading to the front door of the convention center. Dan was principal in charge.

2.1 ACCOMPLISHMENTS | Significant Work

Theme 2: Advancing Knowledge and Practice in Campus Planning and Design

University of Texas at Austin Master Plan *Austin, Texas*



To meet its Board's goal to be the premier public research university in the nation, the University of Texas at Austin (UT Austin) is projected to need more than seven million square feet of new academic and research space over the next thirty years. The campus master plan addresses this need while enhancing the quality of the campus environment. Dan led design studies that demonstrated how future campus growth could be accommodated while emulating the university's legacy campus with its distinguished architecture and memorable public spaces, enhancing campus quality.

University of Texas Medical District Master Plan *Austin, Texas*



UT Austin's Medical District Master Plan articulates a plan for a new medical district within the university campus, to be developed as a partnership between UT Austin, Seton Healthcare, and Central Texas Healthcare. The challenge for creating the vision for the district was to meet a tight four-month schedule to achieve consensus among the diverse stakeholders in this extremely complex development. Three years after the plan was adopted, the new medical school is open and the new teaching hospital, medical office building, and parking garage will open in 2017.

Boston College Master Plan *Boston, Massachusetts*



Dan worked with Boston College to create a comprehensive campus master plan for the school's three urban campuses. New land acquired in 2004 afforded the opportunity to think broadly about the campus framework of open space, sustainability, transportation, infrastructure, and environmental systems. The plan responds to strategic goals for improving academic, social, recreational, and spiritual dimensions of learning. Architecture and landscape guidelines reflect the college's goal of integrating the learning and living components of the campus community, and connect campus lands with surrounding neighborhoods.

Singapore University of Technology and Design Master Plan *Singapore*



Singapore University of Technology and Design's (SUTD) academic mission and curriculum, developed in partnership with the Massachusetts Institute of Technology, is based on new paradigms for integrating technology and design education. Dan led the translation of the academic plan into a campus design concept that reflects and supports SUTD's innovative curriculum. A key feature is a pedestrian spine that showcases the university's interdisciplinary and collaborative mission with multi-functional, interconnected academic buildings, connecting to surrounding areas. The new campus, accommodating 7,000 students on 22 hectares, opened in 2015.

University of Calgary Master Plan *Calgary, Alberta, Canada*



To support the university's strategic direction to enhance interdisciplinary education and research, the University of Calgary Master Plan identifies master planning and building interventions. The plan identifies where buildings can be modified or renovated to create nodes for interdisciplinary collaboration and research in areas as diverse as business, science and engineering, and the humanities. These nodes are linked by open space and pedestrian connections. Working with the university's sustainability director, Dan integrated sustainability into every aspect of the plan.

University of North Texas Dallas *Dallas, Texas*



A new university for 25,000 students, UNT Dallas is located in an economically challenged South Dallas community. The master plan enhances access for the community through a number of strategies, including extension of the DART light rail line to the campus, placing a public school on the campus, and providing opportunities for incubator businesses that would create jobs. As team leader, Dan ensured integration of sustainability into the plan, including orienting buildings to the site's unique natural features, providing arcades for shade, and specifying architecture and landscape guidelines.

2.1 ACCOMPLISHMENTS | Significant Work

Theme 2: Advancing Knowledge and Practice in Campus Planning and Design

University of Minnesota Rochester Master Plan *Rochester, Minnesota*



Working with the university, and with city and business leadership, Dan helped identify a downtown location and craft a master plan for the new University of Minnesota in Rochester. The master plan extends the city street framework into the campus, linking it with the downtown core and an adjacent city park. The urban design framework incorporates opportunities for partnerships with organizations such as the YMCA, the city library, and incubator businesses. Active uses along the pedestrianized street provide a new activity hub for the city as well as the university.

California State University Monterey Bay Master Plan *Seaside, California*



To envision the future of its campus over the next twenty years, CSU Monterey Bay engaged Dan as principal in charge to update its master plan to support its goal of a triple net zero campus. The master plan employs innovative strategies for carbon-neutral energy, wastewater reuse, and total waste recycling. While accommodating a doubling of the university's enrollment, the plan creates a framework of pedestrian open space, transit-only corridors, and preservation of unique natural features of the site.

South East Asia University Master Plan *Bangkok, Thailand*



With the goal of enhancing its competitiveness with other universities in Bangkok, the university was seeking a more student-oriented plan for its campus expansion. Taking advantage of newly acquired property, Dan and his team created an urban design plan that frames new open space with active student-life uses, including housing, a recreation center, and a student center. Storm drainage requirements were creatively met through new water features within the open space.

Trinity University Master Plan *San Antonio, Texas*



Designed by O'Neil Ford, the Trinity campus is one of the most beautiful modern American campuses. One of the challenges for the master plan was to meet the university's future facility needs while respecting this legacy. The master plan converts parking lots in the center of the campus into active open space, enhances pedestrian connections between the upper and lower campuses, and provides strategic renovation and additions to existing buildings. Through Dan's leadership, the university has been persuaded to pursue designation of the campus as a National Register Historic District.

National University of Singapore Student Life Master Plan *Singapore*



The Student and Residential Life Master Plan creates a student life environment that reflects the university's status as a leading global university. The plan designs a sustainable, vibrant campus that facilitates an integrated living/learning experience and encourages intellectual community and exchange. It creates a new central green space at the heart of the campus—Kent Common—and several satellite hubs to encourage community in different areas of the campus. The hubs are connected to the green through a unified landscape environment and well-defined pedestrian connections.

University of San Francisco Master Plan *San Francisco, California*



Landlocked and surrounded by densely developed neighborhoods, the University of San Francisco is increasingly challenged to accommodate its growth objectives. The master plan creatively identifies infill opportunities that enhance the campus character and improve pedestrian connections, while also respecting adjacent neighborhoods. Numerous projects identified in the plan, such as a new Center for Science Innovation, have been completed, strengthening both the educational and student life environments. Dan's leadership in the community engagement process led to neighborhood support for acceptance of the plan by the city.

Theme 3: Integrating the Campus and the City

Portland State University Framework Plan
Portland, Oregon

Working collaboratively with the university, the city's planning office, and the Portland Development Commission, Dan led the development of the innovative Portland State University Framework Plan. The plan has met the goals of providing a blue print for university growth, increasing density in the university district, and enhancing the public realm to support a vital city and campus environment. The plan identifies a variety of models of how university and private interests can be developed jointly, gaining the university over \$20 million in tax increment financing to fund growth.

Auraria Higher Education Center Master Plan
Denver, Colorado

Auraria is an urban campus in downtown Denver, home to Community College of Denver, Metro State University, and University of Colorado Denver. It was especially important to enhance the identity of each institution within the campus. The master plan Dan led infills buildings at Auraria's edges to connect to downtown, improves each institution's identity by establishing a neighborhood for each, and establishes a framework for public/private development. The neighborhood concept has unleashed unprecedented growth on the Auraria campus.

University of Texas Austin East Campus Master Plan
Austin, Texas

East Campus, in the Blackland neighborhood, has traditionally been used to accommodate support functions. Dan worked with university and community representatives to determine mutually agreeable outcomes for development. These included the location of the tennis facility, creation of graduate housing along the neighborhood edge, and adding a large onsite parking facility to manage traffic and parking. The final master plan represents this shared vision and creates an East Campus plan that better utilizes university land, meets program demands, and strengthens the neighborhood.

University of the Arts Master Plan
Philadelphia, Pennsylvania

The University of the Arts is distributed along five blocks of the Avenue of the Arts in the heart of downtown Philadelphia. To enhance university identity and accommodate growth, the master plan proposes strategic building renovations, property acquisitions, and development of underutilized sites. Building on his knowledge of urban universities, Dan helped develop a plan that enhances university competitiveness, supports student success, and creates a dynamic urban setting in downtown Philadelphia.

Singapore Management University Master Plan
Singapore

Located in the heart of downtown Singapore, the university wanted a master plan that would provide better connections to the city, accommodate future growth, and enhance student life. The master plan proposes new open-space connections to surrounding districts, identifies growth opportunities on campus and in adjacent blocks, and illustrates how new student housing and an innovation center can enrich student life. Dan advanced the university's knowledge of how an urban university can connect with the city and strengthen student engagement.

The Cooper Union for the Advancement of Science and Art
New York City, NY

As an urban university located in five blocks of the East Village, Cooper Union is challenged to meet its space needs and strengthen its connection to the East Village. Dan guided an interdisciplinary team of planners and architects in navigating competing master plan interests among the university's three schools, resulting in consensus on recommendations for building renovation and space use. To better engage the city, the plan recommends locating community-related uses at the ground level and creating more transparency to highlight university activities.

2.1 ACCOMPLISHMENTS | Significant Work

Theme 4: Creating Innovation Communities

TechTown Master Plan *Detroit, Michigan*



Dan directed a multidisciplinary team in developing the innovative TechTown District Plan, articulating an inspiring vision for the revitalization of an emerging mixed-use knowledge district in Midtown Detroit. The plan promotes entrepreneurship around the generation of ideas and leverages the potential of key institutional anchors within the district, including Wayne State University, College for Creative Studies, and Henry Ford Health System. The plan also strengthens connections within Midtown Detroit and surrounding neighborhoods.

Calgary West Campus Master Plan *Calgary, Alberta, Canada*



The West Campus Master Plan establishes an urban design framework for a moderately dense urban development combining learning and research facilities seamlessly with living, cultural, recreational, commercial, retail, and service functions in order to ensure a vital and dynamic community. The Master Plan serves as a model for all dimensions of sustainability, including the treatment of the environment, community building, and economic development. Leading-edge environmental technology in the development will create “learning laboratory” opportunities. Dan was principal in charge of the master plan.

Piedmont Triad Research Park Master Plan *Winston-Salem, North Carolina*



Dan guided the creation of a master plan that implements a bold strategy for an urban mixed-use research community on underutilized industrial property in downtown Winston-Salem. The plan integrates with downtown and encourages synergistic collaboration between Wake Forest Baptist Medical Center and technology-based businesses, supporting world-class innovation and urban revitalization. The design has led to the development of state-of-the-art lab space combined with commercial, retail, and residential space that has transformed this section of downtown Winston-Salem into a thriving, urban research community.

University of North Texas Discovery Park Master Plan *Denton, Texas*



The Discovery Park Master Plan, directed by Dan, provides for the evolution of a former Texas Instruments manufacturing facility to a dynamic setting for research that will position the university as a leading regional, state, and national research destination. The master plan and design guidelines articulate a comprehensive vision and long-term program strategy for Discovery Park, establishing its unique identity while allowing for adaptation to future needs. It also provides comprehensive site, architectural and landscape design guidelines to ensure consistent, high quality, sustainable site development.

Federal University of Health Sciences Master Plan *Islamabad, Pakistan*



The Master Plan envisions a compact mixed-use innovation community, providing a vibrant setting anchored by a world-class hospital and medical schools. It includes a research district, along with commercial, residential, and retail uses, while preserving and enhancing the natural environment. The high-density, mixed-use, and sustainable development for which Dan advocated can serve as a model for future development in Pakistan. Synergies among the program components are enhanced by the creation of a series of well-defined and dynamic public spaces.

2.1 ACCOMPLISHMENTS | Significant Work

Theme 5 : Fostering Research and Community Engagement

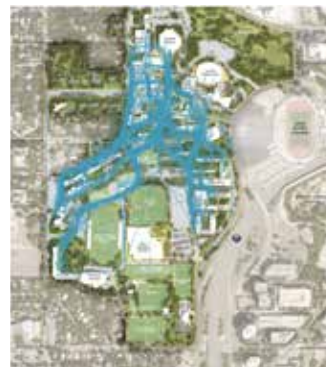
Chapman Prize

Society of College and University Planners (SCUP)



Dan initiated and implemented the Society of College and University Planners (SCUP) Chapman Prize, which funds research in the planning and design of institutions of higher education. The prize furthers the research, development, and dissemination of emerging knowledge to improve campus environments in support of their institutions' mission. In addition, Dan has directed prize juries for several years. The five annual research projects already funded have led to significant new knowledge in the planning and design of campuses.

Technology Tools for Engagement



With his ability to articulate a vision, craft a strategy, and execute solutions, Dan spearheads processes that are both collaborative and data-driven. He has contributed to the development of customized software to inform the design process while enhancing community engagement through the use of web-based, mobile-device-enabled, interactive data visualization and decision-support tools. For campus communities or cities, the tools capture how people engage with their environment and display the results in graphic and map-based formats.

SCUP Advancement Committee

Daniel R. Kenney Dedicated Leadership Award



Dan was the first chair of the SCUP Advancement Committee, which raises funds to support the SCUP Fellows Program. The program is designed to foster emerging leaders in the area of higher-education planning, and through their research to help bring fresh innovative ideas to the broader constituency of planners. Under Dan's leadership, the SCUP Fellows Program supported the first six SCUP fellows and their research.

Alternative Community Engagement Tools



Often, fostering community engagement requires finding innovative and interesting ways to solicit constructive community input. In structuring the TechTown community engagement process, a TechTown board game was developed as a fun tool for community members to envision TechTown's future. Twitter was used to solicit instant input during community meetings, and priorities were solicited using a "pirate booty" voting system. In addition, the My TechTown online survey tool was employed to collect data on how people live, work, and play in the district.

University of Texas at Austin Sustainability Mandala



As an advocate for integrating sustainability and resilience into all of his planning projects, Dan has advanced the process of engaging communities in setting sustainability priorities and targets. At the University of Texas at Austin, for example, the interactive Sustainability Mandala was used to run workshops, helping participants to articulate and discuss their priorities around sustainability. Dan also co-created the Road Map to Resilience tool, used to teach a workshop that broke new ground in addressing the challenge of making campuses more resilient.

UNIVERSITY OF TEXAS AT AUSTIN MEDICAL DISTRICT MASTER PLAN

Society for College and University Planning
Excellence in Planning Award, 2015

UNIVERSITY OF TEXAS AT AUSTIN CAMPUS MASTER PLAN

Society for College and University Planning
Excellence in Planning Award, 2014

MIDTOWN DETROIT TECHTOWN DISTRICT

Boston Society of Landscape Architects
Merit Award, Landscape Analysis and Planning, 2013

Society for College and University Planning
2013 Excellence in Planning Merit Award

International Downtown Association
Downtown Merit Award

American Society of Landscape Architects
Award of Excellence: Analysis and Planning Category

SINGAPORE UNIVERSITY OF TECHNOLOGY AND DESIGN

Campus Master Plan
Society for College and University Planning
2011 Honor Award

PORTLAND STATE UNIVERSITY - UNIVERSITY DISTRICT FRAMEWORK PLAN

Boston Society of Architects /
Society for College and University Planning
2010 Honor Award

UNIVERSITY OF NORTH TEXAS – DALLAS MASTER PLAN

Society for College and University Planning and
American Institute of Architects' Committee on
Architecture for Education
2005 Excellence in Planning Award

SWEET BRIAR COLLEGE MASTER PLAN

Boston Society of Landscape Architects
2003 Excellence in Planning Award

UNIVERSITY OF SCRANTON MASTER PLAN

Society for College and University Planning and
American Institute of Architects' Committee on
Architecture for Education
2002 Excellence in Planning Award

PROVIDENCE 2020 MASTER PLAN

Council on New Urbanism
Charter Award 2002

Boston Society of Landscape Architects
Merit Award 2002

American Society of Landscape Architects
Excellence Award 2002

CITY OF PROVIDENCE NARRAGANSETT LANDING

The Waterfront Center
2001 Excellence on the Waterfront Honor Award

DART TRANSITWAY MALL

American Society of Landscape Architects
2000 Merit Award

SOUTHSIDE MEDICAL DISTRICT STRATEGIC PLAN

American Planning Association, Texas Chapter
1995 Planning Project Award

MEGAPROYECTO PUEBLA PLUS

American Society of Landscape Architects, Texas Chapter
1994 Honor Award

TAIPEI TERMINAL

American Society of Landscape Architects
Merit Award, 1991

DALLAS ARTS DISTRICT MASTER PLAN

Boston Society of Landscape Architects,
First Professional Awards Program
Honor Award, 1984

ACADEMIC AND CIVIC POSITIONS

Harvard University Graduate School of Design,
Instructor in the Office of Executive Education,
Campus Planning, 2003-2011

Boston Architectural Center,
Instructor, 1978-1979

Winchester, Massachusetts Planning Board
Member and Planning Board Chair, 1988-1993

TALKS, INTERVIEWS & PANELS

Society of College and University Planning (SCUP)
2015 Southern Regional Conference, "Resilient
Master Planning: A Strategy for Success at UT Austin"

Society of College and University Planning
(SCUP) 2011 National Conference, "Integrating
Sustainability and Climate Action Planning with the
Comprehensive Master Plan"

Association of Jesuit Colleges and Universities
(AJCU) 2011 Conference, "Think Globally Act Locally:
Challenges in University / Community Planning"

American Planning Association 2010 National
Conference, "Sustainable University-City
Redevelopment Partnerships"

Society of College and University Planning
(SCUP) 2009 National Conference, "Integrating
Sustainability in the Master Planning Process"

National Association of College and University
Business Officers (NACUBO) 2009 Smart and
Sustainable Campuses Conference

Society of College and University Planning (SCUP)
2008 National Conference, "Real Estate Partnerships
as a Funding, Development and Revitalization Tool
for the Campus"

Society of College and University Planning (SCUP)
2007 Southern Regional Conference, "Planning With
Students in Mind: Show me the Vision, the Money
Will Follow"

Competitive Campuses 2007 International
Conference, "Current Trends in Public / Private
Partnerships in the United States"

Canada Green Building Council First Summit (2006)
on Sustainable Campus Planning and Design,
"Planning Principals for a Sustainable Campus:
Lessons Learned"

Society of College and University Planning (SCUP)
2006 Southern Regional Conference, "Finding
Opportunity in the Aftermath of Disaster"

Society of College and University Planning
(SCUP), National Association of College and
University Business Officers (NACUBO), and APPA
The Association of Higher Education Facilities
Officers Joint 2006 Conference, "Mission and Place:
Achieving Strategic Objectives through Campus
Design"

2005 International Symposium on the Campus and
Community, Key Note Panelist

Chulalongkorn University 2003 Special Lecture of
the Faculty of Architecture

Association of American Medical Colleges, Group
on Business Affairs 2003 Conference, Speaker

Society of College and University Planning (SCUP)
2003 National Conference, "Small Campuses -
Adapting to Big Changes"

Society of College and University Planning (SCUP)
2001 Mid-Atlantic Regional Conference, Workshop
Leader

Society of College and University Planning (SCUP)
1998 Mid-Atlantic Regional Conference, Speaker

Society of College and University Planning (SCUP)
1996 Mid-Continent Regional Conference, Speaker

Society of College and University Planning (SCUP)
1994 National Conference, Speaker

International Downtown Association (IDA) 1988
Conference, Panelist

Urban Land Institute (ULI) 1987 Conference on
Mixed-Use Projects, Speaker

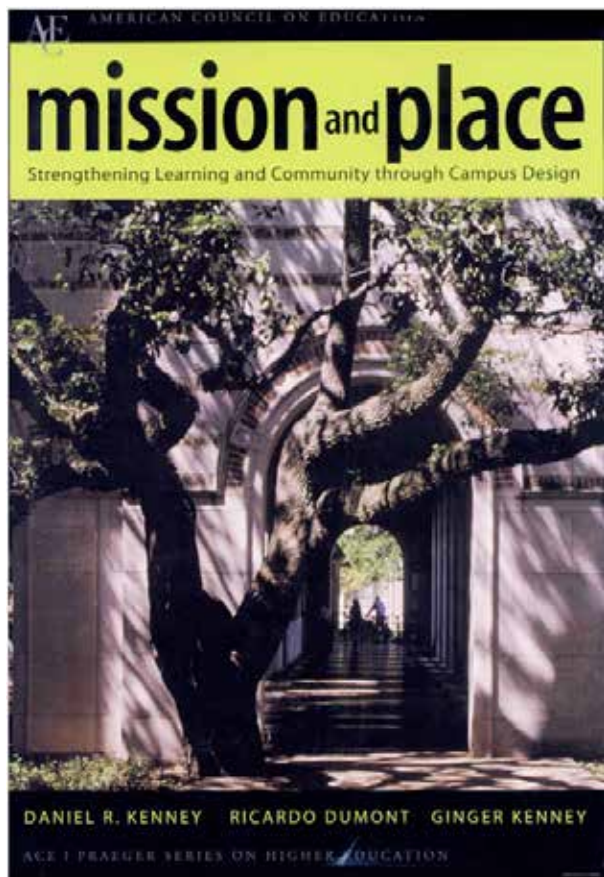
Urban Land Institute (ULI), National Endowment
for the Arts, and Institute of Urban Design 1984
City Building Project Symposium, Panelist

Urban Land Institute (ULI) 1983 Conference Council
Workshop, "The Dallas Arts District", Speaker

International Downtown Executives Association
(IDEA) 1983 Conference, Panelist

International Downtown Association (IDA) 1988
Conference, Panelist

Urban Land Institute (ULI) 1987 Conference on
Mixed-Use Projects, Speaker



Mission and Place: Strengthening Learning and Community through Campus Design, American Council on Education / Praeger / Series on Higher Education, January 2005

Mission and Place offers guidance to architects and urban designers in shaping campuses to advance universities' missions and goals. It provides numerous case studies and descriptions of design and planning interventions that have had a significant impact on campuses throughout the United States and around the world. In addition to articulating the role of planning, urban design, and architecture to college and university leadership, the book has been used as a graduate text in planning and design in a number of universities, including the University of Pennsylvania, the University of Georgia, and Harvard University. Dan is the lead author.

The book helps institutional leaders and the planners and designers who work with them to realize the interconnection between the institution's strategic goals and its campus, and to leverage the campus and its environs—its neighborhood, buildings and landscape, paths and roadways, parking lots, fountains, and bell-towers—as powerful resources to address and improve issues that many institutions struggle with. The book contains, among others, sections on utilizing campus architecture to further placemaking; creating a language of landscape elements that expresses the campus's individuality and relationship to its regional context; use of compactness (density) and mixing campus uses to create vitality and interaction; taming the automobile; creating a beneficial physical relationship with the neighborhood; and bringing meaning and beauty to the special places on campus.

Other Publications

"Shaping Campuses: The Cultural Forces that Shaped College Campuses and the Future of Campus Planning and Design," Cal Planner, American Planning Association California Chapter, March 2016

CampusMatters.net video presentation, 7/14/2015, "Forces That Have Shaped Campuses," <https://www.youtube.com/watch?v=Ule5gCfkJh0>

"Planning Principles for a Sustainable Campus," *Campus Design + Planning: Culture, Context and the Pursuit of Sustainability*, Canadian Green Building Council, 2008



"Compelling Directions for Competitive Campuses," Competitive Campuses International Conference, Trondheim, Norway, June 2007

"How to Solve Campus Parking Problems without Adding More Parking," The Chronicle of Higher Education, March 26, 2004

EXHIBIT 1

Midtown Detroit Techtown District

Theme 1: Revitalizing Cities and Theme 4: Creating Innovation Communities

Detroit, Michigan



EXHIBIT 2

Texas Capitol Complex Master Plan

Theme 1: Revitalizing Cities

Austin, Texas



EXHIBIT 3

The University of Texas at Austin Campus Master Plan and Medical District Master Plan

Theme 2: Advancing Knowledge and Practice in Campus Planning and Design

Austin, Texas



EXHIBIT 4

Singapore University of Technology and Design Campus Master Plan

Theme 2: Advancing Knowledge and Practice in Campus Planning and Design

Singapore, Singapore



EXHIBIT 5

Portland State University District Framework Plan

Theme 3: Integrating the Campus and the City

Portland, Oregon



EXHIBIT 6

Auraria Higher Education Center Campus Master Plan

Theme 3: Integrating the Campus and the City

Denver, Colorado



Theme 1: Revitalizing Cities and Theme 4: Creating Innovation Communities

Architecture Firm of Record:
Sasaki Associates, Inc.

Completion Date:
2013

Role of Nominee:
Principal in Charge

Awards:
Society for College and University Planning
Excellence in Planning Merit Award, 2013
Boston Society of Landscape Architects
Merit Award in Landscape Analysis and Planning, 2013
International Downtown Association
Downtown Merit Award
American Society of Landscape Architects
Award of Excellence: Analysis and Planning Category

The 149-acre TechTown District in Midtown Detroit currently consists of many underutilized buildings and surface parking lots. Dan led the urban-design revitalization strategy that leveraged the potential of institutional anchors within the district, including Wayne State University, College for Creative Studies, and Henry Ford Health System, through a framework that connects innovation clusters with a cohesive open space network and building reuse and infill structures. The TechTown District Plan articulates a vision for an emerging knowledge district that accelerates innovation, promotes entrepreneurship, and builds community around the generation of ideas in a lively mixed-use setting. The plan repurposes the historic building stock with uses that support innovation and create vibrancy, and strengthens connections within Midtown Detroit and beyond.

Publications:

"Map: TechTown Detroit District Plans 2014," DETROITography, 7/20/2015

Detroit: Three Pathways to Revitalization, Solomon Lewis, 2014

"ASLA Announces 2014 Professional and Student Awards," PR Newswire, 9/29/2014

"All Good in October LAM," Landscape Architecture Magazine (feature on ASLA 2014 awards), 9/29/2014

"Award-winning designs would brighten Detroit's TechTown district," MLive Michigan, 4/30/2013

"Sasaki Associates Reimagines a Disused Area of Detroit as a Creative Community Hub," Inhabit.com, 4/24/2013

"TechTown District Plan / Sasaki Associates," ArchDaily.com, 4/23/2013

A key feature of the plan, and an early action item, is a plaza at the heart of the district that contains program and design elements to foster creativity and the exchange of ideas, including flexible spaces for planned and serendipitous gatherings.

Environmental, economic, and cultural sustainability are foundational elements of the plan. Public open space improvements create a walkable district with reduced demand for parking and access to light rail transit. The plan contains an exercise circuit and integrated bicycle network to promote health and wellness.

The team employed several strategies to encourage participation in the TechTown planning process. A series of open forums included presentations from experts in innovation districts and research parks, urban design, and planning. Interactive games, such as the Circuit Board and the

Coin Survey allowed the community to test program and design alternatives, and to rank strategies for investment. MyTechTown—an interactive online graphic survey—collected constituents' qualitative impressions of the district, which helped the design team tailor planning, programming, and urban design strategies.



Declaration of Responsibility:

I have personal knowledge of the information listed above.

That responsibility included:

- Project under direction of nominee

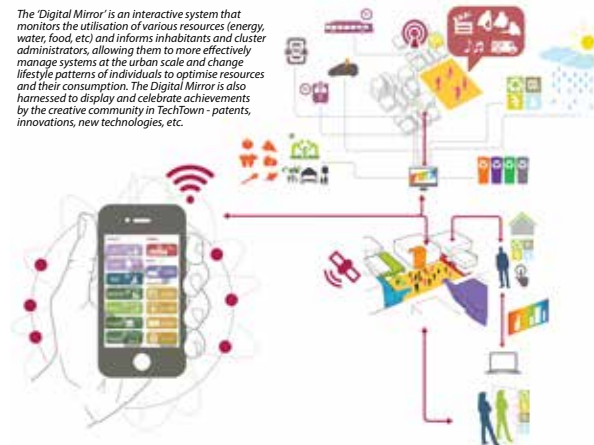
Signature:

Name & Title: James N. Miner, AICP
Managing Principal
Sasaki Associates, Inc.

Theme 1: Revitalizing Cities and Theme 4: Creating Innovation Communities



Theme 1: Revitalizing Cities and Theme 4: Creating Innovation Communities



The 'Digital Mirror' is an interactive system that monitors the utilisation of various resources (energy, water, food, etc) and informs inhabitants and cluster administrators, allowing them to more effectively manage systems at the urban scale and change lifestyle patterns of individuals to optimise resources and their consumption. The Digital Mirror is also harnessed to display and celebrate achievements by the creative community in TechTown - patents, innovations, new technologies, etc.

Theme 1: Revitalizing Cities

Architecture Firm of Record:
Page Southerland Page, Inc.

Completion Date:
2016

Role of Nominee:
Principal in Charge

The Texas Capitol Complex Master Plan for the forty-block area around the state capitol complex in downtown Austin outlines a strategic vision as well as long-term goals for one of the most prominent sites in the state of Texas. The design team led by Dan developed three guiding design concepts: a vision for a new Cultural Gateway and Texas Mall approaching the Capitol Grounds from the north; well-designed east/west connectors with both strong pedestrian and vehicular roles; and the establishment of a historic precinct around a cluster of notable structures and significant landscape features to serve as a garden district within an otherwise compact urban environment.

The plan assesses the development potential of each state-owned site in the district and creates a strategy to relocate 1.2 million square feet of state offices from leased spaces dispersed throughout Austin to the Capitol Complex. It proposes six new office structures for sites that are currently open parking lots or parking

structures targeted for replacement. The new buildings help define the Texas Mall and the historic precinct with its garden district, as well as creating a strong urban character for the district's east/west connectors.

The Texas Mall, a four-block-long tree-lined space, is designed to accommodate special occasion events as well as informal activities. Parking for four of the six new buildings will be substantially in an underground parking structure beneath the Texas Mall that will also facilitate distribution of infrastructure services for the district.

The plan details three phases of development, the first of which was adopted and funded by the Texas Legislature in 2015. Currently in implementation, this phase will include over a million square feet of new office space and construction of three blocks of the Texas Mall with attendant parking, landscape and street improvements, and underground utility upgrades.

**Publications:**

"Texas Capitol Complex future: wide-open spaces." Austin Towers, 11/15/2015

"Pedestrian mall, new buildings planned for area north of Capitol," MyStatesman, Austin American-Statesman, 12/6/2015

Declaration of Responsibility:

I have personal knowledge of the information listed above.

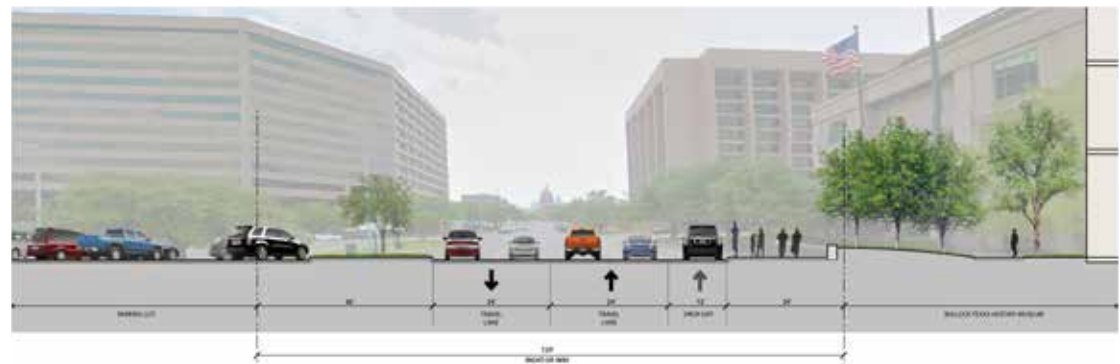
That responsibility included:

- Project under direction of nominee

Signature:

Name & Title: James N. Miner, AICP
Managing Principal
Sasaki Associates, Inc.

Theme 1: Revitalizing Cities



Theme 1: Revitalizing Cities



Theme 2: Advancing Knowledge and Practice in Campus Planning and Design

Architecture Firm of Record:
Sasaki Associates, Inc.

Completion Date:
2013

Role of Nominee:
Principal in Charge

Awards:
University of Texas at Austin
Medical District Master Plan
Society for College and University Planning
Excellence in Planning Award,
2015
University of Texas at Austin
Campus Master Plan
Society for College and University Planning
Excellence in Planning Award,
2014

To meet its Board's goal of being the premier public research university in the nation, the University of Texas at Austin (UT Austin) is projected to need more than seven million square feet of new academic and research space over the next thirty years. The challenge for the campus master plan was to address this need while enhancing the quality of the campus environment. Dan led design studies that demonstrated future campus growth could be accommodated to the south and the east of the university's legacy campus with its distinguished architecture and memorable public spaces, while enhancing the quality of this area. The Urban Design Tool Kit developed from these studies defined the desired relationships between open spaces and buildings, and has been incorporated into the design review process. The master plan breaks new ground by creating a metrics-based sustainability framework and visualization technology that provides the university with a decision support

system. These powerful tools transform the master plan from a static document to an ongoing, responsive process that integrates data into design evaluation.

Central to the success of the master planning effort was an extensive series of stakeholder meetings conducted by Dan and his design team to gather campus-wide input and forge a consensus. The master plan lays out a framework of strong ideas; this framework shapes how the university will invest, accommodates growth, enhances the physical campus, and engages with businesses and neighborhoods surrounding the campus.

UT Austin's Medical District Master Plan further articulates the plan for the new medical district, to be developed as a partnership between UT Austin, Seton Healthcare, and Central Texas Healthcare. The challenge for creating the vision for the district was to achieve consensus among the diverse stakeholders in an extremely complex development with



only a four month planning process. Three years after the plan was adopted, the new medical school is open, and the new teaching hospital, medical office building, and parking garage will open in 2017.

Publications:

"UT Medical District Master Plan Receives SCUP Award," PageThink.com, 6/12/2015

"After 135 years, a medical school is about to open its doors at UT," MyStatesman.com, 6/24/2016

"Partners for a Healthy City: A Sneak Peak at UT Austin's New Medical School," Medtech Boston, 1/26/2015

"UT Regents Approve Designs for First Phase of Dell Medical School," PageThink.com, 2/23/2014

"Revitalizing Master Plans—University of Texas Austin" in *University Trends: Contemporary Campus Design*, Coulson, Jonathan et al, 2014

"New Master Plan: A Compact & Connected Future for UT," Imagine Austin, City of Austin, 6/23/2013

Declaration of Responsibility:

I have personal knowledge of the information listed above.

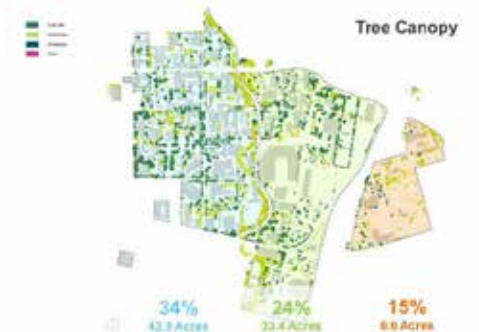
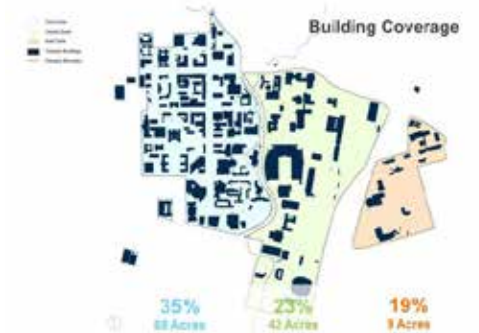
That responsibility included:

- Project under direction of nominee

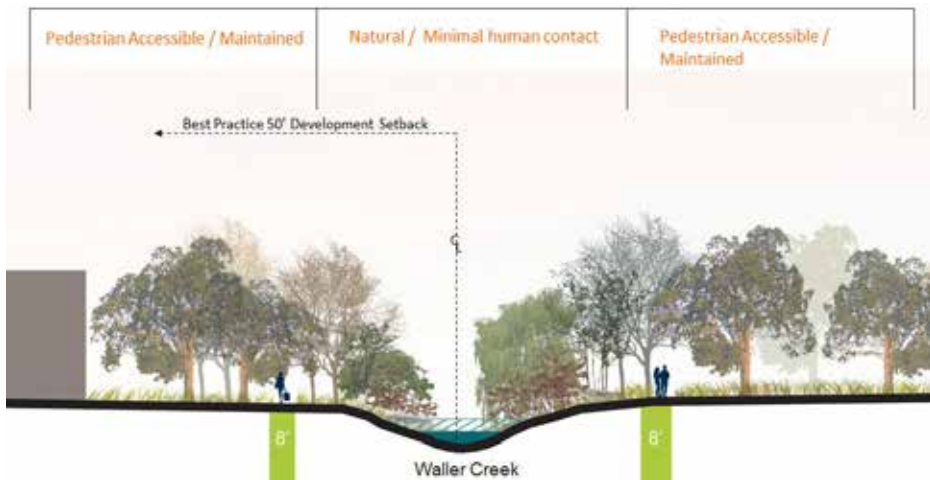
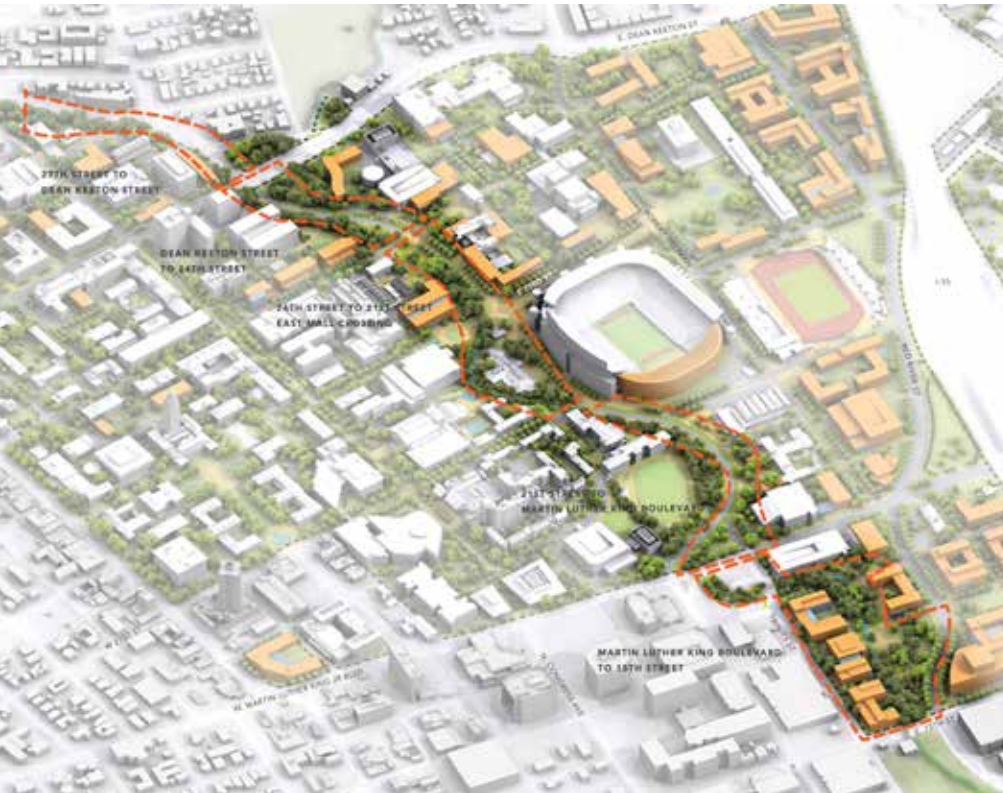
Signature:

Name & Title: James N. Miner, AICP
Managing Principal
Sasaki Associates, Inc.

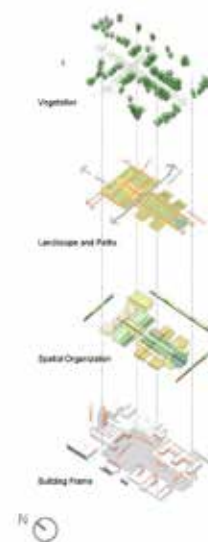
Theme 2: Advancing Knowledge and Practice in Campus Planning and Design



Theme 2: Advancing Knowledge and Practice in Campus Planning and Design



Campus Realm Tool Kit



South Mall

Theme 2: Advancing Knowledge and Practice in Campus Planning and Design



Theme 2: Advancing Knowledge and Practice in Campus Planning and Design

Architecture Firm of Record:
Sasaki Associates, Inc.

Completion Date:
2010

Role of Nominee:
Principal in Charge

Awards:
Society for College and University Planning
Honor Award, 2011

The Singapore University of Technology and Design (SUTD) master plan establishes a bold concept for a new university campus that supports a cutting-edge academic vision of interdisciplinary, collaborative, and project-based learning. The academic mission and curriculum, developed in partnership with the Massachusetts Institute of Technology, is based on new paradigms for integrating technology and design education in the fields of engineering, product development, architecture and sustainable design, and information systems technology. This curriculum will promote research and learning, partnerships with industry, and integration with a global, knowledge-based economy.

The challenge for the new campus master plan was to develop a campus framework that fosters SUTD's innovative curriculum. Dan led the translation of the academic plan into a design concept that reflects and supports SUTD's goals for learning, research, and student development. A key concept is the east-west pedestrian spine that showcases the university's

interdisciplinary and collaborative mission with multifunctional and interconnected academic buildings. The spine also creates a public face for the university and connects to surrounding areas for future development. Student life facilities, housing, and recreational buildings will be integrated in mixed-use precincts and connected through public spaces and pedestrian links. Sustainable design strategies are comprehensively integrated through building systems, green roofs, pedestrian and transit access, and storm water management. The resulting campus has a strong identity, supports a vibrant community, and demonstrates a commitment to engaged learning and student development. The new campus can accommodate up to 7,000 students on a site area of 22 hectares. It opened in 2015.



Publications:

"Master Plan for the Singapore University of Technology and Design wins International Design Award," PR Web, 4/29/2011

"Singapore University of Technology and Design Master Plan," EnFlyer.com

"SUTD: Campus of Learning and Motivation," B-1 Magazine, January 2011

Declaration of Responsibility:

I have personal knowledge of the information listed above.

That responsibility included:

- Project under direction of nominee

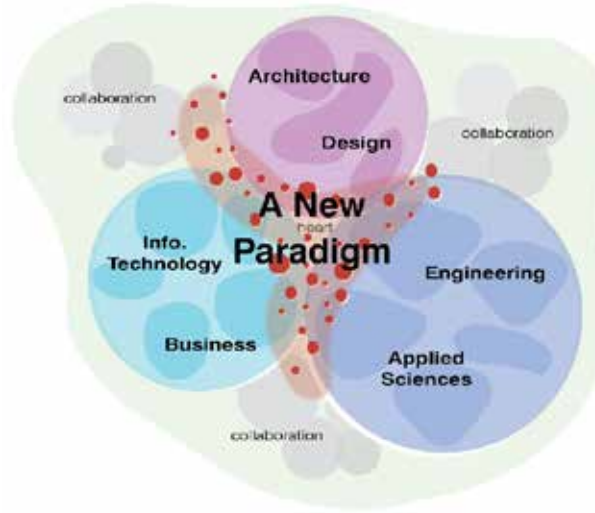
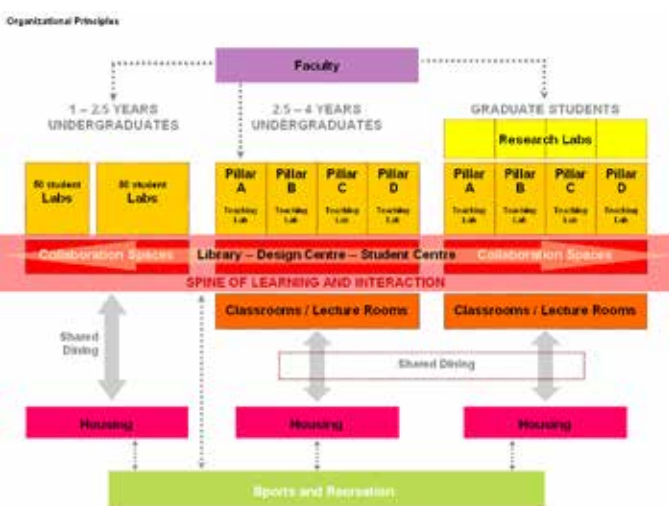
Signature:

Name & Title: James N. Miner, AICP
Managing Principal
Sasaki Associates, Inc.

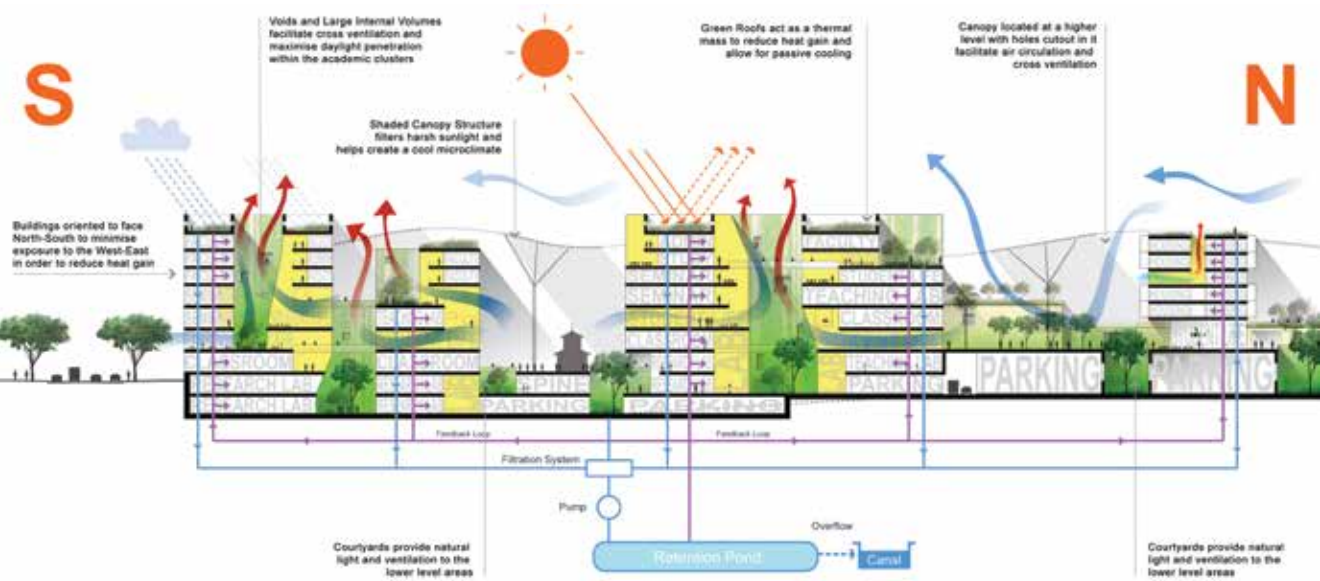
Theme 2: Advancing Knowledge and Practice in Campus Planning and Design



Theme 2: Advancing Knowledge and Practice in Campus Planning and Design



Theme 2: Advancing Knowledge and Practice in Campus Planning and Design



Theme 3: Integrating the Campus and the City

Architecture Firm of Record:
Sasaki Associates, Inc.

Completion Date:
2010

Role of Nominee:
Principal in Charge

Awards:
Boston Society of Architects
Honor Award
Society for College and University Planning
Honor Award, 2010

Located in the heart of downtown Portland, Portland State University (PSU) is a rapidly growing urban research institution with over 28,000 undergraduate and graduate students. The challenge in developing the framework plan was to accommodate university growth and enhance the campus environment while also providing opportunities for private development within the University District. Building on the relationship between the city and PSU, the University District Framework Plan proposes a new model of urban development that is neither city nor campus, but a unique fusion of the two. Dan led the development of a new strategy to accommodate both institutional and the private sector growth: PSU classrooms and offices are intermingled with private office space and research facilities, providing a vertical mix of uses within a single building. Active ground floors provide retail services to a broad client base. Classroom and academic space occupy the lower floors, while the top floors house commercial office or research space. Boundaries between public and private spaces are minimized; uses are not only mixed, but shared; and a transparency characterizes the environment, making the academic

Publications:
"University District Framework Plan," Portland State University Campus Planning Office, www.pdx.edu
"University District / South Downtown," City of Portland, www.portlandoregon.gov
"PSU Pursues Grand Vision," Portland Business Journal, 3/4/2011
"Portland's EcoDistricts: Innovation at the neighbourhood level," in *Sustainable Cities: Governing for Urban Innovation*, Simon Ross, 2015.



and social life of the university visible to all.

A network of corridors, parks, and plazas creates a web of active open spaces within the district. The framework plan identifies three major focal points in the University District, complementing existing hubs of activity. These are modernization of the original core campus; community and business collaboration zone; and a vibrant residential village.

Because the Framework Plan was developed in close collaboration with the Campus Economic and Planning

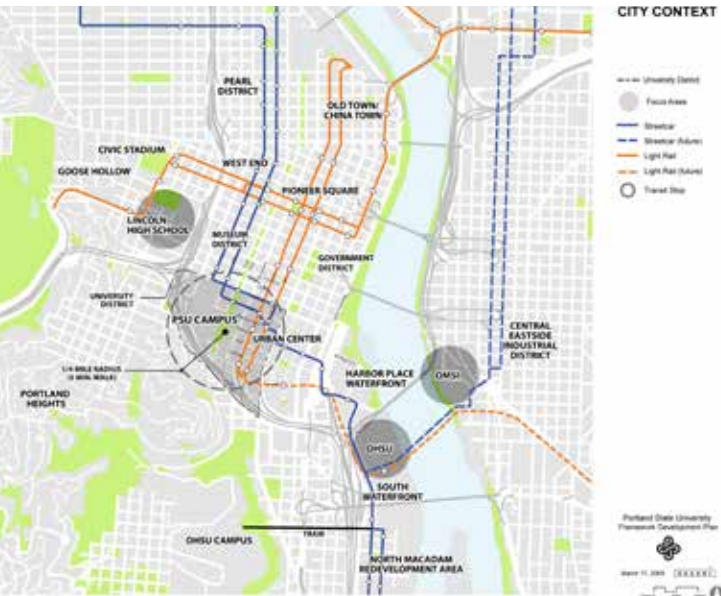
Advisory Committee (CEPAC), which included representatives from partner institutions and community organizations, implementation has progressed rapidly. The plan's integration of private with institutional development has allowed the University to receive substantial tax increment financing to partially fund university growth. City zoning has been modified to accommodate mixed use at a higher density, and 1,000 beds of student housing have been built through a public/private partnership.

Declaration of Responsibility:
I have personal knowledge of the information listed above.
That responsibility included:
• Project under direction of nominee

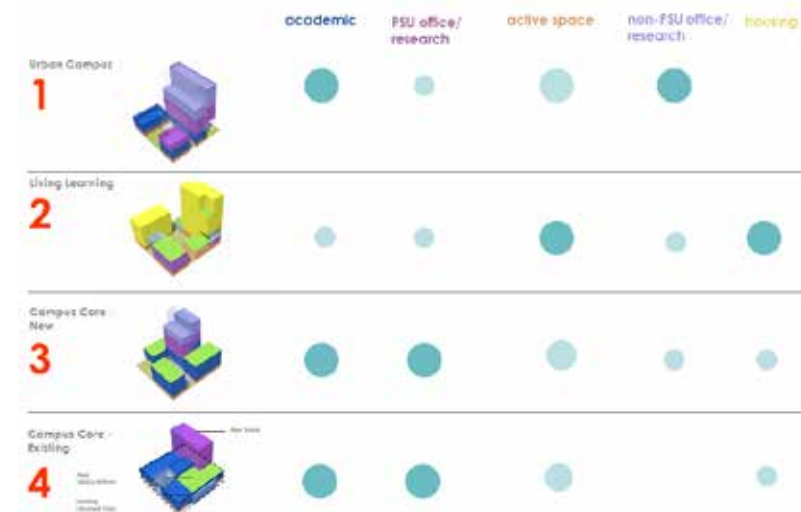
Signature:

Name & Title: James N. Miner, AICP
Managing Principal
Sasaki Associates, Inc.
Daniel R. Kenney, AIA, AICP

Theme 3: Integrating the Campus and the City



Theme 3: Integrating the Campus and the City



Theme 3: Integrating the Campus and the City

Architecture Firm of Record:
Sasaki Associates, Inc.

Completion Date:
2007

Role of Nominee:
Principal in Charge

Awards:
Boston Society of Architects
Honor Award
Society for College and University Planning
Honor Award, 2010

In a visionary move during the 1970s, the Denver Urban Renewal Authority assembled the Auraria Higher Education Center (AHEC), a 143-acre parcel shared by the Community College of Denver, the Metropolitan State University of Denver, and the University of Colorado at Denver. This grouping promotes social and academic synergy among the schools, while saving money with shared facilities like the library, student center, and recreation facilities. With little capital funding available from the state, the original AHEC model constrained

individual capital facility investment and hampered individual institutional identity.

Dan was instrumental in formulating the transformational element of the master plan that gives each institution its own neighborhood within AHEC, providing each one the ability to fund its unique facilities and an identifiable home within the campus. Simultaneously, the plan establishes a Campus Crossroads that strengthens the common mission and shared facilities among schools and within the urban context. Since master plan adoption, each institution has built or

funded new buildings in its neighborhood consistent with the guidelines of the plan.

The master plan committee also expressed the goal of integrating the AHEC campus more closely into downtown and the surrounding neighborhoods. To accomplish this, the master plan identifies fifteen acres of the campus as a site for public-private partnerships with up to two million square feet of mixed-use construction, connecting AHEC with downtown Denver. The design extends the city street grid into the campus, enlivening the campus with ground level uses such as entertainment and retail. This commercial development offers a way for the institutions to monetize their real estate assets in order to invest in core academic programs. For example, Metropolitan State University has implemented a public/private partnership between its culinary arts program and a new hotel on campus.

The plan for AHEC's physical design and sustainability measures are congruent with Greenprint Denver, which articulates the goals and strategies for sustainable growth in the city.

Declaration of Responsibility:

I have personal knowledge of the information listed above.

That responsibility included:

- Project under direction of nominee

Signature:

Name & Title: James N. Miner, AICP
Managing Principal
Sasaki Associates, Inc.



Publications:

"Master Plan & Implementation Plan," Auraria Higher Education Center, www.ahec.edu

"Auraria Master Campus Plan Update," DenverInfill.com, 3/8/2007

Theme 3: Integrating the Campus and the City



Theme 3: Integrating the Campus and the City

