

This cover section is produced by the AIA Archives to show information from the online submission form. It is not part of the pdf submission upload.

Institute Honors and Awards **Fellowship**



THE AMERICAN
INSTITUTE
OF ARCHITECTS

2017 AIA Fellowship

Nominee William K. Hellmuth
Organization HOK Architects
Location Washington, DC
Chapter AIA DC

Category of Nomination

Category One - Design

Summary Statement

Bill Hellmuth balances the art and science of design through technically complex projects. His designs are recognized across the globe in work which celebrates context, sustainability and the aspirations of his clients.

Education

Princeton University, Princeton, NJ, MARCH - 2 years
University of Virginia, Charlottesville, Va, BS ARCH - 4 years

Licensed in: New York, Virginia, Maryland, Washington DC

Employment

HOK 1990 - present 26 years
SOM 1977 - 1990 13 years





October 11, 2016

Ms. Mary Katherine (Mary Kay) Lanzillotta, FAIA
AIA, Jury of Fellows, Chair
The American Institute of Architects
1735 New York Avenue, NW
Washington, DC 20006-5292

Re: Letter of Recommendation for Fellowship for William K. Hellmuth

Dear Ms. Lanzillotta,

It gives me great pleasure to sponsor and endorse my colleague, William Hellmuth, AIA for nomination for fellowship in the American Institute of Architects for 2017.

Bill has made a great contribution to our profession by perfecting the art of a designer collaborating with other thought leaders in various fields. With this collaboration, he has delivered to his clients projects that are not only significant visually, but perhaps even more importantly, actually solve important functional, environmental, urban and budget problems. From my perspective, this talent sets a great example about how architects can be even more relevant and helpful in the world society.

Luckily for HOK, Bill came to HOK from SOM and quickly became a leader at HOK. Bill's love is designing projects and his work shows it. Even while he took on ever more responsibilities including becoming president of HOK and now CEO, he has always put DESIGN first. He is committed to getting completed projects to reflect what his clients want and need. An important role model for what architects should be doing. To this day, Bill leads HOK by example by leading his Washington DC design studio where he leads by designing rather than by directing. Bill is committed to the idea that HOK acts like a creative enterprise rather than like a big business.

Bill has designed a wide range of projects, large and small, many that are global in nature, including a number of US Embassies around the world. He now has work in 20 countries. And along the way, Bill was a major influence in getting the environmental movement going in the United States. Bill's design for the EPA laboratories in Research Triangle Park expressed EPA's aspirations for healthy and sustainable facilities, and was the model for GSA and federal government "green" design before LEED. It subsequently became the model for several portions of the USGBC's LEED rating system, especially in the area of indoor air quality.

I am please to sponsor and nominate William Hellmuth for elevation to the College of Fellows.

Sincerely,

A handwritten signature in black ink, reading 'Bill Valentine'.

William E. Valentine, FAIA

Bill Hellmuth balances the art and science of design through technically complex projects. His designs are recognized across the globe in work which celebrates context, sustainability and the aspirations of his clients.

For the past 25 years Bill has built a practice of local, national and international scope personally receiving over 20 AIA awards. His projects explore the intersection of design excellence and thought leadership.

design excellence and thought leadership

Bill creates collaborations between “Thought Leaders” throughout the firm and his own design leadership. These collaborations with experts who deal with very technically complex building types—including laboratories, secure embassies and hospitals— result in program-driven projects such as the DC Consolidated Lab. This lab building is a highly technical facility that demonstrated that even a highly technical laboratory facility could achieve LEED Platinum status. It is a beautiful urban building that visually celebrates its sustainability. The US Embassy in Moscow provided a challenge of how to rebuild an existing building while strengthening it for today's blast standards. At the same time, the embassy creates a transparency which reflects the more open relationship between United States and Russia which occurred after the fall of the “Iron Curtain”. Bill's leadership fosters **collaborations between design and technical experts that define a large part of his work.**

client aspiration

Much of the work derives its meaning from the aspirations of his clients. In the NOAA Headquarters, the building is a diagram of wave motion. Additionally, during a rainfall, the water runs down the roof, collects in a scupper and creates a waterfall that charges the bio-retention swales that form the gardens around the building. This **creates a building which is uniquely appropriate for a client that predicts our weather.**

The ADNOC headquarters in Abu Dhabi strives to be a counterpoint to the twisting and turning muscular massing of the towers which are its neighbors. The client wanted to present a building which represents the foundation of the economy of their nation, and as such, would be a building that was not only highly sustainable, but also a building which would represent the stability of the UAE and not the latest fashion of the day.

urbanism + sustainability

Bill's passion for urbanism and sustainability is demonstrated in the KAPSARC Residential Community in Riyadh, Saudi Arabia. This community is the first LEED For Homes project outside of the United States and is organized around a central desert park where the mosque is the most prominent building in this very public space. **The community is designed along new urbanist principles, but with a very contemporary architectural expression.** The centerpiece of which is a very abstract geometric mosque.

Bill is a leading proponent for green design within the profession. As an early advocate for sustainability, he implemented practices of sustainable integration in every project before LEED certification even became a benchmark. One such effort includes the U.S. Environmental Protection Agency headquarters, winner of a 2002 GSA Award in the Category of Sustainability, and a benchmark of green standards. Other such projects include the National Wildlife Federation, named a Top Ten Green Project by the AIA Committee on the Environment in 2002. The National Wildlife Federation project illustrates a thorough integration of green principles with energy efficiency within the context of a limited budget.

Believing that architectural firms should be led by design professionals, Bill has become President and CEO of HOK, and has mentored countless designers within his firm. By leading by example, he has raised the design profile of the entire firm.

2.1 Accomplishments | Significant Projects



2.1 Accomplishments | Significant Projects

Bill Hellmuth led all of the projects listed in the following section as Design Principal and is largely responsible for the design and implementation of each project.



DEPARTMENT OF STATE New Embassy Compound Nairobi, Kenya 2003

402,000 sq. ft. New Office Building and Consulate

Political, aesthetic and security considerations guided the design of this new embassy compound, which was designed after a bomb destroyed the former embassy. The challenge was to design a highly sustainable and secure embassy that was visually welcoming even though there could be no large windows or curtain wall. The architecture employed the use of porches as a universal sign of welcome while sun shading the building at the same time.

 AIA Virginia Society, Merit Award



US ENVIRONMENTAL PROTECTION AGENCY Research + Agency Headquarters RTP, North Carolina 2001

1.1 Million sq. ft. Office and Laboratory

This consolidation of 14 different laboratories in RTP is an early example of a highly sustainable project and was a model for GSA's green building program. Many of the specifications, including research by the EPA, HOK and GSA were incorporated into the then new LEED program, including the Indoor Air Quality section.

 AIA DC Presidential Citation, Sustainable Design



CHEVY CHASE CENTER New Office + Mixed-Use Development Chevy Chase Maryland 2006

190,000 sq. ft. Retail and 212,000 sq. ft. Office

This mixed-use project includes office uses as well as local and destination retail. The retailers use the 2-story architecture of their spaces to create their brand identity and this in turn provides variety along Wisconsin Avenue, enhancing the pedestrian environment. The project is punctuated by two urban "vest pocket" parks.

 AIA DC, Merit Award, Interior Architecture
Mid-Atlantic Construction Magazine, Award of Merit, Mixed-Use Category



CITY OF HAMPTON New Convention Center Hampton, Virginia 2005

344,000 sq. ft.

As a new gateway to the city, the Hampton Roads Convention Center draws inspiration from the community's nautical roots. Among the distinct design features is a white tensile structure that resembles a sail. The design orients the building to the south and uses shading devices to provide daylighting and views while minimizing summer solar heat gain. A series of water walls, fountains, jets and pools link indoor and outdoor spaces, connecting buildings and activities.

 AIA Virginia, Excellence In Architecture
Fabric Architecture Magazine, Award Of Excellence
Hampton Roads Association Of Commercial Real Estate, Award Of Merit

2.1 Accomplishments | Significant Projects

Bill Hellmuth led all of the projects listed in the following section as Design Principal and is largely responsible for the design and implementation of each project.



NATIONAL WILDLIFE FEDERATION Agency Headquarters Reston, Virginia 2001

100,000 sq. ft.

The challenge was to create a very sustainable headquarters building for a cost at or below that of a typical suburban spec office building. NWF achieved that, and won a COTE award. This project proved that you could build a sustainable building with a modest cost. With this as an example Hellmuth was able to convince several developers to pursue similarly sustainable and cost-effective projects.



AIA Virginia Society, Merit Award
AIA COTE, Top Ten Green Project



WASHINGTON DULLES INTERNATIONAL AIRPORT Midfield Concourse B Chantilly, Virginia 1997

320,000 sq. ft.

Together with the new people mover system, the new midfield terminal is a response to creating an air-side experience which is not dependent on mobile lounges to bring passengers to their planes. The project includes people mover stations, gates, hold rooms, retail and other support operations.



KAPSARC Master Plan and KAPSARC Residential Community Riyadh, Saudi Arabia 2013

2.5 Million sq. ft.

The residential community provides a premier environment that helps KAPSARC attract and retain world-class research and development talent. As the spiritual center of the residential community, is the community masjid, or mosque, with high visibility within the site.



AIA DC - Honor Award for Excellence in
Urban Design & Master Planning
LEED-NC Platinum
LEED Neighborhood Development anticipated

USGBC, Best of Building Award, Best Regional Project, Middle East
Faith & Form magazine + IFRAA Honor Award, Religious Architecture
"KAPSARC Housing," ArchDaily
"Saudi Arabian Spiritual Inspiration," Middle East Architect
"Setting a Benchmark in Sustainable Residential Design," Cityscape



EXECUTIVE TOWER Washington, DC 2000

132,000 sq. ft.

Executive Tower was designed to optimize views towards the White House from the corner of 14th Street and New York Avenue. The rooftop amenities, which are in part defined by the architectural embellishment at the corner, was one of the first such rooftop amenities in speculative office buildings that has been widely used in the generation of DC office buildings that followed.

Best New Urban Office Development - Washington Business Journal

2.1 Accomplishments | Significant Projects

Bill Hellmuth led all of the projects listed in the following section as Design Principal and is largely responsible for the design and implementation of each project.



COLLEGE PARK AVIATION MUSEUM College Park, Maryland 1998

27,600 sq. ft.

This museum celebrates the airfield where the Wright brothers taught the US Army how to fly. A teaching museum, the building is sited with a large north facing curtain wall overlooking the runway and connecting the artifacts to the landscape where these artifacts were first used.



AIA DC Merit Award



ZAYED UNIVERSITY New Campus Dubai, UAE 2006

1.87 Million sq. ft.

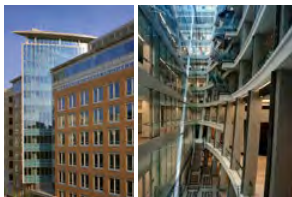
This university is organized around an outdoor courtyard which can be used during temperate weather and an indoor courtyard which is covered with a light-filtering tensile structure for the hottest periods. This space is cooled with spill air from the university buildings and serves as the university's main gathering place.



1601 WEWATTA STREET Mixed-Use Development Denver, Colorado 2016

280,000 sq. ft.

Creating an active urban park at the corner of 16th Street and Wewatta Street in Denver, this mixed-use project develops an active urban space. The corner park allows the building to be oriented on a north - south axis and this improves the daylighting as well as the energy budget for the project.



US FEDERAL GOVERNMENT Agency Headquarters Washington, DC 1999

346,000 sq. ft.

One of the first GSA design excellence projects, this building creates a collaborative environment for the organization by inserting a nine story curved atrium which brings daylight and a sense of community to the project.



AIA DC Merit Award



700 6th Street, NW Washington, DC 2009

390,000 sq. ft.

This office building is one of a series of downtown buildings that achieved LEED Platinum certification within the context of a budget for a speculative office building. This is an important step in bringing sustainability to the majority of our urban projects.

USGBC National Capital Region Chapter "Honorable Mention" - LEED Core & Shell Project

2.1 Accomplishments | Significant Projects

Bill Hellmuth led all of the projects listed in the following section as Design Principal and is largely responsible for the design and implementation of each project.



WALTER REED NATIONAL MILITARY MEDICAL CENTER Hospital Renovation Bethesda, Maryland 2012

690,000 sq. ft. / 344 beds

This project created the bridging documents and conceptual architectural approach to the facility which incorporates Walter Reed into the landmark Bethesda Naval Hospital. The charge was to tie the campus together with new medical facilities while embracing the landmark tower which is the iconic center of the campus.

Associated General Contractors of America, Alliant Build America Merit Award
"Walter Reed Creates Unified Campus for Country's Wounded Warriors," Health Facilities Management
"Humanizing Healthcare for Wounded Warriors," Healthcare Design



14th and W, NW Washington, DC 2013

356,000 sq. ft.

This residential project incorporates the Anthony Bowen YMCA which was the first African American YMCA in the United States. The project straddles the border of a historic residential district and rapidly developing commercial zone.

NAIOP MD/DC, Award of Excellence - Best Mixed Use Project



HEART OF DOHA Mixed-Use Development - Phase 4 Doha, Qatar Under Construction

3 million sq. ft. / 70 acres

The project uses sustainability and heritage to lead innovation in urban living in Qatar's capital city. The design converts the heart of the city into a model community with the amenities of an ideal city, creating a new central destination in Doha. It will transform the urban landscape and become a model for regional development by developing contemporary architecture that draws from the history of Doha. Phase Four consists of a major public plaza and 12 mixed-use buildings. The proposed building uses include commercial office buildings, residential and retail space, a hotel and a group of medical office buildings containing clinical and administrative programs.



UNIVERSITY OF MARYLAND, BALTIMORE Health Sciences Facility III Baltimore, Maryland Under Construction

428,970 sq. ft.

Set in an urban campus, this 10 story laboratory building ties together three other medical school departments around an open courtyard to its south.

LEED-NC Gold anticipated

2.1 Accomplishments | Significant Projects

Bill Hellmuth led all of the projects listed in the following section as Design Principal and is largely responsible for the design and implementation of each project.



THE US DEPARTMENT OF STATE New Office Annex Moscow, Russia Under Construction

241,900 sq. ft.

The new office annex provides expansion space to the earlier Moscow embassy project. The seven story addition includes a new consular section, 300 desks for State Department and US Federal Agency personnel, public diplomacy spaces including a new auditorium and two floors of residential apartments. The project reinterprets and reinforces the architecture of the original Moscow embassy.



CRYSTAL TOWER Kuwait City, Kuwait Under Construction

This 45 story mixed use tower distinguishes itself by creating a five-story "sky garden" at the height of the pre-1985 skyline in Kuwait city. The retail base continues the garden theme with the crystalline atrium inserted at the buildings entrance.



BJC HEALTHCARE / WASHINGTON UNIVERSITY SCHOOL OF MEDICINE Academic Medical Center St. Louis, Missouri Under Construction

558,000 sq. ft.

The project creates a cohesive and unifying expression for the sprawling hospital campus through planned renovations and new construction. It increases the number of private rooms, consolidates obstetrics and gynecological services, expands clinical care and surgical programs, creates new facility practice clinics and diagnostics as well as improves wayfinding.



NEF ATAÖY 22 Mixed-Use Development Istanbul, Turkey Under Construction

130,000 sq. m.

This transit-oriented, mixed-use development in the Ataköy neighborhood of Istanbul features a community designed around six high-rise towers. The six-block site includes five 18-story residential towers housing 1,500 apartment and micro-apartment units, and a separate 18-story office tower. The towers are designed around a central square, allowing natural ventilation and light to the lower levels of the podium.



NATIONAL ASSOCIATION OF BROADCASTERS One M Street SE New Headquarters Washington, DC Under Construction

130,800 sq. ft.

The new headquarters for The National Association of Broadcasters creates a gateway to the ball park district. The width of South Capitol Street allows this building to be viewed from a distance and allows the curvilinear form of the curtain wall to create this gateway expression. Setback terraces at the roof levels allow for terrific views to the capital dome.

2.1 Accomplishments | Significant Projects

Bill Hellmuth led all of the projects listed in the following section as Design Principal and is largely responsible for the design and implementation of each project.



CORPORATE BIOPHARMA Master Plan Gaithersburg, Maryland In Design

1,350,000 sq. ft.

The master plan for the expansion of this suburban office campus, originally designed in the 1990s, is guiding a leading biopharmaceutical company's continued growth on the site. In addition to serving as the company's North American headquarters, the landmark campus functions as one of its three "Centers of Excellence" for pharmaceutical research and development. By establishing a new direction for the campus, the master plan will maximize opportunities for collocation and collaboration while creating an atmosphere that inspires scientific innovation.



CAPITAL BAY Conceptual Master Plan Abu Dhabi, UAE In Design

170,599 sq. m. / 42 acres

Capital bay occupies a prominent site on the eastern tip of the Shams district, Abu Dhabi. The master plan for this site is based on the concept of a large central open space, Central Park, that extends from the western edge of the site to the eastern edge providing long views to the sea. Instead of each building competing for attention this development composes all of the buildings together into a singular skyline with a signature tower at its center.



16TH STREET NW Commercial Office Renovation Washington, DC In Design

112,563 sq. ft.

This renovation of two existing Brutalist precast buildings into a single composition fits more comfortably into the context of 16th Street NW echoing the vertical bays of the Capital Hilton to the south and the University Club to the north. The building incorporates vertical landscape elements into the façade.



CHENGDU Mixed-Use Project Chengdu, China In Design

3,250,000 sq. ft.

Mixed-use project including 45- and 55-story towers, 1 million square feet of retail and three residential towers. The project sits on an island in the center of the CBD.

2.1 Accomplishments | Significant Projects

Bill Hellmuth led all of the projects listed in the following section as Design Principal and is largely responsible for the design and implementation of each project.



RHINE ORDNANCE BARRACKS Medical Center Replacement Kaiserslautern, Germany In Design

1 million sq. ft.

This replacement facility for the US Army Hospital at Ramstein Air Force Base creates a sculptural curving facade with the evergreen forested hillside as its backdrop. Utilizing the concept of healing gardens this building incorporates the hillside and surrounding areas into its gardens.

LEED Silver minimum anticipated



JEDDAH METRO Ferry Terminal Washington, DC Unbuilt

2,000 sq. m.

The Jeddah Metro Ferry Terminal project is part of an overall master plan of public transportation for the city of Jeddah, Saudi Arabia. This prototypical terminal is one of nine such terminals located along the Jeddah coastline.



GREENLAND DALIAN East Harbor Tower Dalian, China Unbuilt

3.2 million sq. ft.

This mixed-use development was designed to be the tallest in northeast China. Developed for an international competition, the design creates a gently curving, triangular form. The 108-story tower reflects the boldness and symmetry of a lighthouse. From afar, the singular triangular form of the main tower translates into a beacon with organically shaped openings recognizable from any direction in the city. The Greenland Dalian East Harbor Tower complex features office space, hotels, residential units and retail space.



UNION STATION Master Plan Washington, DC Unbuilt

9 million sq. ft.

The Amtrak master plan revitalizes the historic station, triples passenger capacity, doubles the number of trains the station can handle and improves passenger experience. The plan positions Union Station as an integral part of Amtrak's Northeast Corridor investment plan by upgrading it to accommodate an additional level of tracks, platforms and concourses below the existing track level. The design brings natural light into the station and creates better connections to transit. The overall design - which includes a planted, vegetated roof - underscores the inherent sustainability of mass transit.



AIA DC, Honorable Mention
AIA Honor Award, Regional & Urban Design

HOK Washington, DC
President + CEO
1992 - 2016

PROFESSIONAL EXPERIENCE

In 1992, Bill became the Design Principal of HOK's Washington office where he worked with his partners to create an important local practice. Since then, they have had several buildings under construction each year in the National Capitol Region as well as overseas. Winning many design awards during this period, **Bill raised the design profile of HOK's Washington office.**

The firm recognized Bill's international as well as local practice and asked him to join the board of directors in 1988. By 2005 Bill became president of HOK where he mentored regional design directors worldwide as well as helped create an environment for their practice's individual success.

Believing that the **firms leadership should be firmly rooted in professional practice**, Bill continued to grow and evolve the Washington DC studio with both an international as well as local design presence.

In 2016, Bill became President and CEO of HOK while continuing to lead his local design studio. He is creating a culture of design excellence throughout the firm.

HOK St. Louis
Senior Vice President
1990 - 1992

Bill joined the St. Louis office of HOK in 1990 where he was the Design Director of the commercial group.

Skidmore, Owings, & Merrill
New York, NY
Associate Partner
1977 - 1990

Bill began his professional career in the New York office of Skidmore Owings and Merrill, working primarily on high-rise office and residential projects. He became an Associate Partner in 1984 and led the design of several large mixed use projects both in Manhattan as well as overseas. While in New York he was a recipient of the "40 under 40" award given to architects who received recognition under the age of 40.

EDUCATION

1977 Princeton University
Master of Architecture

1975 University of Virginia
Bachelor of Architecture

REGISTRATIONS / AFFILIATIONS

AIA Member

Registered Architect, District of Columbia, State of Maryland,
New York State, Commonwealth of Virginia

LEED Accredited Professional

Delos/Well Being Advisory Board

GSA Design Excellence Peer

Design Futures Council, Senior Fellow + Executive Board Member

Potomac School Trustee Emeritus

Federal City Council Member



"Great buildings can remain relevant over a long period of time. A great building has a certain integrity in its architectural moves and devices. Its design is rooted in meaning, not fashion. Great architecture is inspiring and uplifting. It contributes to the culture, society and fabric of its place."

Bill Hellmuth led all of the projects listed in the following section as Design Principal and is largely responsible for the design and implementation of each project.

American Institute of Architects



- 2016 AIA—DC Chapter
Honor Award for Excellence in Urban Design & Master Planning**
KAPSARC Residential Community
Riyadh, Saudi Arabia
- 2016 AIA—DC Chapter
Honor Award for Excellence in Architecture**
KAPSARC Community Mosque
Riyadh, Saudi Arabia
- 2014 AIA—Virginia Society, Merit Award for Excellence in Architecture**
DC Consolidated Forensic Laboratory
Washington, DC, USA
- 2014 AIA Virginia Society, Honor Award for Excellence in Architecture**
NOAA Center for Weather + Climate Prediction
College Park, Maryland, USA
- 2013 AIA—Maryland Chapter
Citation Award—Institutional Architecture**
NOAA Center for Weather + Climate Prediction
College Park, Maryland, USA
- 2013 AIA—National
Honor Award for Regional + Urban Design**
Union Station Master Plan (HOK + Shalom Baranes)
Washington, DC, USA
- 2012 AIA—DC Chapter
Presidential Citation Award for Sustainability**
Consolidated Forensics Laboratory
Washington, DC, USA
- 2012 AIA—DC Chapter
Merit Award**
Consolidated Forensics Laboratory
Washington, DC, USA
- 2011 American Institute of Architects
Technology in Architectural Practice BIM Awards
Citation in the category of “BIM Excellence”**
DC Consolidated Forensic Laboratory
Washington, DC, USA



- 2010 AIA—Virginia Chapter
Award of Excellence—Architecture**
220 20th Street - Crystal Plaza
Arlington, Virginia, USA
- 2008 AIA—DC Chapter
Award of Merit - Architecture**
Chevy Chase Center
Washington, DC, USA
- 2008 AIA—Virginia Chapter
Award of Excellence—Interior Architecture**
Plaza East
Chantilly, Virginia, USA
- 2006 AIA—Virginia Chapter
Merit Award, Interior Architecture**
MedImmune Campus
Gaithersburg, Maryland, USA
- 2005 AIA Virginia Society, Excellence in Architecture**
Hampton Roads Convention Center
Hampton Roads, Virginia
- AIA DC Merit Award**
Chevy Chase Land Company
Chevy Chase, Maryland
- 2004 AIA Virginia Society, Merit Award**
U.S. Department of State NEC Nairobi
Nairobi, Kenya
- AIA Virginia Society, Award of Excellence, Institutional Architecture**
National Air and Space Museum Steven F. Udvar-Hazy Center,
Chantilly, Virginia
- 2003 AIA Virginia Society, Merit Award**
National Wildlife Federation Headquarters
Washington, DC

Bill Hellmuth led all of the projects listed in the following section as Design Principal and is largely responsible for the design and implementation of each project.



- 2002 AIA DC Presidential Citation for Sustainable Design**
U.S. EPA Research & Administrative Headquarters
Research Triangle Park, NC
- 2001 AIA Committee on the Environment (COTE), Top 10 Green Proj.**
National Wildlife Federation Headquarters
Washington, DC
- AIA DC Merit Award**
U.S. Department of State New Office Building
Moscow, Russia
- 2000 AIA Virginia Society, Merit Award**
IRS Computing Center, Martinsburg
West Virginia
- AIA DC Merit Award**
U.S. Confidential Client
Washington, DC
- 1998 AIA DC Merit Award**
College Park Aviation Museum
College Park, Maryland
- 1995 AIA DC Award for Excellence**
Guest House at Timika
Irian Jaya, Indonesia



American Society of Landscape Architects

- 2013 ASLA—Potomac + Maryland Chapters Merit Award**
NOAA Center for Weather + Climate Prediction
College Park, Maryland, USA
- 2002 ASLA—Potomac + Maryland Chapters Merit Award**
Rockville Town Center
Rockville, Maryland, USA

American Society of Interior Designers

- 2013 ASID—Washington Metro Chapter Design Competition—Top Commercial Office**
National Cancer Institute Research Campus
Rockville, Maryland, USA



U.S. Green Building Council

- 2013 USGBC—National Capital Regional Chapter Award of Excellence—New Construction Project of the Year**
DC Consolidated Forensic Laboratory
Washington, DC, USA
- 2011 USGBC—National Capital Regional Chapter Project of the Year New Construction**
Walter Reed National Military Medical Center
Bethesda, MD, USA
- 2011 USGBC—National Capital Regional Chapter 2011 Project of the Year Neighborhood Development**
Constitution Square Office Building One & Two
Washington, DC, USA
- 2010 USGBC—National Capital Regional Chapter Honorable Mention - LEED Core & Shell Project**
700 Sixth Street, NW
Washington, DC, USA



Commercial Real Estate Development Association

- 2015 NAIOP MD/DC, Award of Excellence Best Suburban Office or Industrial/Flex Project**
National Institute of Allergy and Infectious Diseases (NIAID) Headquarters
Rockville, Maryland, USA
- 2015 NAIOP MD/DC, Award of Excellence Best Mixed Use Project**
14th & W Street NW / Anthony Bowen YMCA
Washington, DC, USA
- 2014 NAIOP Maryland/DC Award of Excellence Best Urban Office over 150,000 sq. ft.**
Constitution Square Office Building 3
Washington, DC, USA
- 2013 NAIOP—Maryland + Washington, DC Chapters Award of Excellence—Best Institutional Facility**
NOAA Center for Weather + Climate Prediction
College Park, Maryland, USA

Bill Hellmuth led all of the projects listed in the following section as Design Principal and is largely responsible for the design and implementation of each project.



2013	NAIOP—Maryland + Washington, DC Chapters Award of Excellence—Best Biotech, S + T Project DC Consolidated Forensic Laboratory <i>Washington, DC, USA</i>
2013	NAIOP—Maryland + Washington, DC Chapters Best Suburban Office over 4 stories National Cancer Institute Research Campus <i>Rockville, Maryland, USA</i>
2011	NAIOP—Maryland + Washington, DC Chapters Award of Excellence—Best Sustainable Design - New Building Constitution Square Office Building One & Two <i>Washington, DC, USA</i>
2010	NAIOP—Northern, Virginia Chapter Award of Excellence—Best Building, Institutional Facility \$20M+ Dulles Airport Concourse B - West Aero Train Station <i>Dulles, Virginia, USA</i>
2010	NAIOP—Northern, Virginia Chapter Award of Excellence—Best Building Renovation Adaptive Re-Use 220 20th Street - Crystal Plaza <i>Arlington, Virginia, USA</i>
2010	NAIOP—Northern, Virginia Chapter Award of Excellence—Best Mixed Use The Millennium at Metropolitan Park <i>Arlington, Virginia, USA</i>
2009	NAIOP—Maryland + Washington, DC Chapters Award of Merit - Best Institutional Facility Soka Gakkai Institute - USA Cultural Center <i>Washington, DC, USA</i>
2008	NAIOP—Maryland + Washington, DC Chapters Award of Excellence—Best Biotech U.S. Pharmacopeia <i>Rockville, Maryland, USA</i>



2008	NAIOP—Maryland + Washington, DC Chapters Award of Excellence—Best Urban Office Under 150,000 SF 1121 14th Street, NW <i>Washington, DC, USA</i>
2008	NAIOP—Northern, Virginia Chapter Award of Merit—Best Building, 4-7 Stories Award of Excellence—Best Interiors, Building Common Area Plaza East <i>Washington, DC, USA</i>
2005	NAIOP—Maryland + Washington, DC Chapters Award of Excellence—Best Interiors, Commercial Space Nortel Government Relations Office <i>Washington, DC, USA</i>
2005	NAIOP—Maryland + Washington, DC Chapters Award of Merit—Best Biotech Johns Hopkins University Montgomery County Campus Building III <i>Rockville, Maryland, USA</i>
2004	NAIOP—Northern Virginia Award of Excellence - Best Building, Institutional National Air and Space Museum (NASM) Steven F. Udvar-Hazy Ctr. <i>Chantilly, Virginia, USA</i>
2004	NAIOP—Northern Virginia Award of Excellence - Institutional Architecture National Air and Space Museum (NASM) Steven F. Udvar-Hazy Ctr. <i>Chantilly, Virginia, USA</i>
2004	NAIOP—Maryland + Washington, DC Chapters Award of Excellence - Best Biotech Office MedImmune Campus <i>Gaithersburg, Maryland, USA</i>
2004	NAIOP—Maryland + Washington, DC Chapters Award of Excellence - Best Interiors/Commercial Space MedImmune Campus <i>Gaithersburg, Maryland, USA</i>

Bill Hellmuth led all of the projects listed in the following section as Design Principal and is largely responsible for the design and implementation of each project.



- 2003** **NAIOP—Maryland + Washington, DC Chapters**
Award of Excellence - Best Urban Office up to 150,000 SF
 MedImmune Campus
Gaithersburg, Maryland, USA
- 2003** **NAIOP—Maryland + Washington, DC Chapters**
Award of Excellence - Best Urban Office over 150,000 SF
 799 9th Street
Washington, DC, USA
- 2003** **NAIOP—Maryland + Washington, DC Chapters**
Award of Excellence - Best Interiors/Office Space
 1125 Eye Street Lobby Renovation
Washington, DC, USA
- 2001** **NAIOP—Northern Virginia**
Best Build-to-Suit Under 150,000 SF
 National Wildlife Federation Headquarters
Reston, Virginia, USA

Other

- 2016** **The Chicago Athenaeum: Museum of Architecture and Design and The European Centre for Architecture Art Design and Urban Studies - The International Architecture Award**
 KAPSARC Residential Community Mosque
Riyadh, Saudi Arabia
- 2016** **Iconic World-Iconic Awards, Best of the Best in Architecture, Public**
 KAPSARC Residential Community Mosque
Riyadh, Saudi Arabia
- 2015** **U.S. Green Building Council, National Capital Region**
Award of Excellence - Core & Shell
 Constitution Square Office Building 3
Washington, DC, USA
- 2014** **Faith & Form Magazine | The Interfaith Forum on Religion, Art and Architecture (IFRAA) Honor Award, Religious Architecture - New Facilities**
 KAPSARC Residential Community Mosque
Riyadh, Saudi Arabia

- 2013** **R&D Magazine**
Lab of the Year Special Mention
 DC Consolidated Forensic Laboratory
Washington, DC, USA
- 2013** **Environmental Design & Construction Excellence Magazine**
Design Excellence Awards—1st Runner Up (Institutional/ Governmental, New Construction)
 National Cancer Institute Research Campus
Rockville, Maryland, USA
- 2013** **Environmental Design + Construction Excellence Magazine**
Design Excellence Awards—Honorable Mention
 NOAA Center for Weather + Climate Prediction
College Park, Maryland, USA
- 2013** **World Architecture News (WAN)**
Commended Transport—High Commendations
 Union Station Master Plan (HOK + Shalom Baranes)
Washington, DC, USA
- 2011** **Engineering News-Record Magazine**
Best Mid-Atlantic Government/Public Building
 NOAA Center for Weather & Climate Prediction
College Park, MD USA
- 2011** **Mid-Atlantic Construction Magazine**
Best of 2010 - Green Building Project of the Year
 Constitution Square Office Building One & Two
Washington, DC, USA
- 2010** **DC's Historic Preservation Office/Office of Planning**
DC Honorable Award - Design and Construction
 Soka Gakkai Institute - USA Cultural Center
Washington, DC, USA
- 2010** **Washington Building Congress**
Craftsmanship Awards - Curtain wall + Ornamental Metals
 700 Sixth Street, NW
Washington, DC, USA

Bill Hellmuth led all of the projects listed in the following section as Design Principal and is largely responsible for the design and implementation of each project.

2010	Washington Building Congress Craftsmanship Awards - Curtain wall Constitution Square Office Building One & Two Washington, DC, USA	2006	International Interior Design Award, Mid-Atlantic Chapter, Bronze Award - Commercial Chevy Chase Land Company Headquarters Chevy Chase, Maryland, USA
2009	Mid-Atlantic Construction Magazine Award of Merit - Government / Public Category Special Jury Award - Project Management 220 20th Street - Crystal Plaza Arlington, Virginia, USA	2005	International Interior Design Award, Mid-Atlantic Chapter, Bronze Award - Educational/Institutional U.S. Naval Academy Michelson Chauvenet Hall Annapolis, Maryland, USA
2009	Design Arlington Awards Program Award of Merit 220 20th Street - Crystal Plaza Arlington, Virginia, USA	2005	International Interior Design Award, Mid-Atlantic Chapter, Silver Award - Commercial 100,000+ SF MedImmune Campus Gaithersburg, Maryland, USA
2008	Washington Building Congress Craftsmanship Awards" - Concrete (Cast-in-Place Concrete including formwork & reinforcement) + Metal (Structural Steel Framing) U.S. Pharmacopeia Rockville, Maryland, USA	2005	International Illumination Design Award, Capital Section MedImmune Campus Gaithersburg, Maryland, USA
2008	Washington Building Congress Craftsmanship Awards" - Finishes (Ceramic Tiles; Drywall; & HVAC- Sheet Metal) + Woods & Plastics (Architectural Millwork) Dulles International Airport, East Automated People Movers Dulles, Virginia, USA	2004	Fairfax County Exceptional Design Awards Program Honor Award, Institutional National Air and Space Museum (NASM) Steven F. Udvar-Hazy Ctr. Chantilly, Virginia, USA
2007	Building Exchange Awards "Best Master Planning" Al Ain Master Plan Abu Dhabi, United Arab Emirates	2004	International Illumination Design Award, Capital Section MedImmune Campus Gaithersburg, Maryland, USA
2007	NAVFAC Design Awards Program Merit Award, Interior Design U.S. Naval Academy Michelson Chauvenet Hall Annapolis, Maryland, USA	2003	Environmental Design + Construction Excellence Magazine Design Excellence Awards—Honorable Mention, Outstanding Commercial Interior National Wildlife Federation Headquarters Reston, Virginia, USA
2007	Mid-Atlantic Construction Award of Merit, Best of 2007 Chevy Chase Center Chevy Chase, Maryland, USA	2002	General Services Administration (GSA) Design Award, Sustainability U.S. EPA Research & Administrative Headquarters Research Triangle Park, North Carolina, USA
		2002	National Trust for Historic Preservation National Preservation Award Pentagon Phoenix Project Arlington, Virginia, USA



LECTURES, SEMINARS, AND SPEAKING ENGAGEMENTS

Design Futures Council Executive Board Meeting - Keynote Speaker
August 2014 | Atlanta, Georgia

Design Futures Council Summit on Sustainable Leadership, "Leadership through Sustainable Design" - Speaker and Panelist
October 2013 | Minneapolis, MN



USGBC GreenLearn Special Anniversary Forum Event "Integrative Design Achieving Excellence in Building Practices" - Speaker and Panelist
April 2012 | Washington, DC



Catholic University, Symposium on Innovation and Collaboration, "Role of Innovator and Integration in a Global Architectural Practice" - Keynote Speaker
April 2012 | Washington, DC



B.E.S.S., "Sustainability as a Driver of Building Form" - Keynote Speaker
April 2011 | Pasadena, California



Roger Williams University, "HOK Sustainable Design Seminar," - Speaker
November 2010 | Providence, Rhode Island



AIA Convention, "Innovation Inspired by Nature: HOK's Alliance with the Biomimicry Guild" - Speaker and Panelist
April 2010 | Miami, FL



Roger Williams University, "HOK Sustainable Design Seminar" - Speaker
September 2009 | Providence, Rhode Island



Cityscape China, "Sustainability - The Starting Point" - Keynote Speaker
24 May 2007 | Shanghai, China

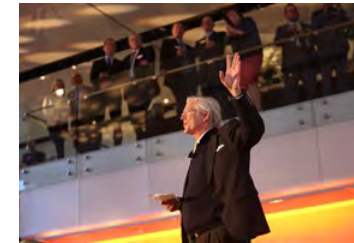


Princeton Symposium - Building the Future - Speaker and Panelist
November 2006 | Princeton, New Jersey



GSA Design Excellence Peer Orientation, 24 - Speaker and Panelist
September 1998 | Washington, DC

Third International Conference on Courthouse Design - Speaker and Panelist
September 1998





ARCHITECT



SELECT PUBLICATIONS

New International Architecture - Global Design + Urbanism XVI
KAPSARC Community Masjid
2016

Architect Magazine
"Q+A: HOK CEO Bill Hellmuth" by Hallie Busta
April 2016

Port Magazine
"Case Study No. 2 HOK, Q+A: Bill Hellmuth"
Spring/Summer 2015

OnSite Magazine
"HOK's Bill Hellmuth Delivers a New Brand of Modernism to DC and the World" by Deborah K. Dietsch
Winter 2008-2009

"Virginia Air Show: Aviation Takes Flight at the Smithsonian's Steven F. Udvar-Hazy Center"
by Michael Frank, Architectural Digest
May 2008

Great New Buildings of the World, "Udvar-Hazy Center"
Ana G. Canizares/Harper Design
2005



Interior Design Magazine
"Sheraton Inn at Timika"
February 1996



Building Diplomacy: The Architecture of American Embassies
Dar es Salaam, Tanzania Embassy;
Nairobi, Kenya Embassy;
Zagreb, Croatia Embassy
Moscow, Russia Embassy
Elizabeth Gill Lui
2004



Building America's Hangar
Steven F. Udvar-Hazy Center
Lin Ezell
2004

2.1 Accomplishments | Design Competitions Won

2017 FAIA Submission | William K. Hellmuth, AIA

The following are projects for which Bill Hellmuth was the senior architectural designer and are projects that were successfully won.



2013

SELECTED DESIGN COMPETITIONS

Dalian Greenland Center, Dalian, China
107 Story, 574,000 sq. m. mixed-use development

2011

National Cancer Institute Headquarters, Rockville, Maryland
575,000 sq. ft. eight-story office and research towers

2010

National Institute of Allergy And Infectious Diseases, Rockville, Maryland
494,895 sq. ft. new government office

2009

Nuclear Regulatory Commission, Bethesda, Maryland
635,000 sq. ft. new government office

2008

NOAA Center for Weather and Climate Prediction, College Park, Maryland
268,000 sq. ft. new office and research complex

2007

Constitution Square Office Building II, Department of Justice, Washington, DC
635,000 sq. ft. new government office

2004

Crystal Tower Kuwait
252,000 sq. ft. mixed-use tower

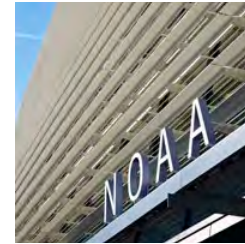
2002

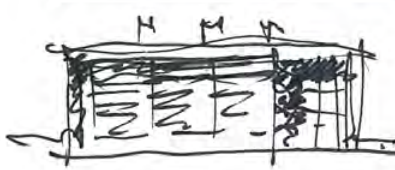
Zayed University, Dubai, United Arab Emirates
1,807,000 sq. ft. University campus

US Embassy, Nairobi, Kenya
402,100 sq. ft. US Embassy

1997

Abu Dhabi Trade Center, Abu Dhabi, UAE
275,360 sq. m. mixed-use development





WASHINGTON, DC

DC Consolidated Forensics Laboratory

ROLE Senior Architectural Designer

COMPLETED 2011

SIZE 351,000 sq. ft.

SELECT AWARDS

- 🏆 AIA Virginia Society - Merit Award
- 🏆 AIA - Technology In Architectural Practice BIM Award
- 🏆 AIA Washington, DC - Merit Award
- 🏆 AIA Washington, DC - Presidential Citation For Sustainability

NAIOP Maryland/DC - Award Of Excellence - Best Biotech / Science & Technology

R&D Magazine - Lab of the Year Special Mention

USGBC National Capital Region Chapter - Award Of Excellence / New Construction Project Of The Year

SELECT PUBLICATIONS

"Feedback Loop: Post-Occupancy Evaluation"
Architectural Record-August 2105

"DC's Public Health Laboratory Gets Federal Approval To Open Region's First Biosafety Level 3 Lab"
Lab Manager-November 2013

"Consolidated Forensic Laboratory"
Tradeline-August 2013

"2013 Laboratory Of The Year Special Mention: Building A Program, Not Just A Lab"
Laboratory Design-June 2013

"Detail: Solar Sunscreen, Consolidated Forensic Laboratory"
Architect-December 2012

"CSI DC? New High-Tech Lab Opens For Department Of Forensic Sciences In Washington"
Architect-October 2012

I have personal knowledge of the nominee's responsibility for the project listed above. That responsibility included: Principal-In-Charge, largely responsible for design, entitlements, project management and consultant team direction. The nominee's firm executed the work

Susan K. Williams
HOK Managing Principal

This building visually expresses its sustainable principles.

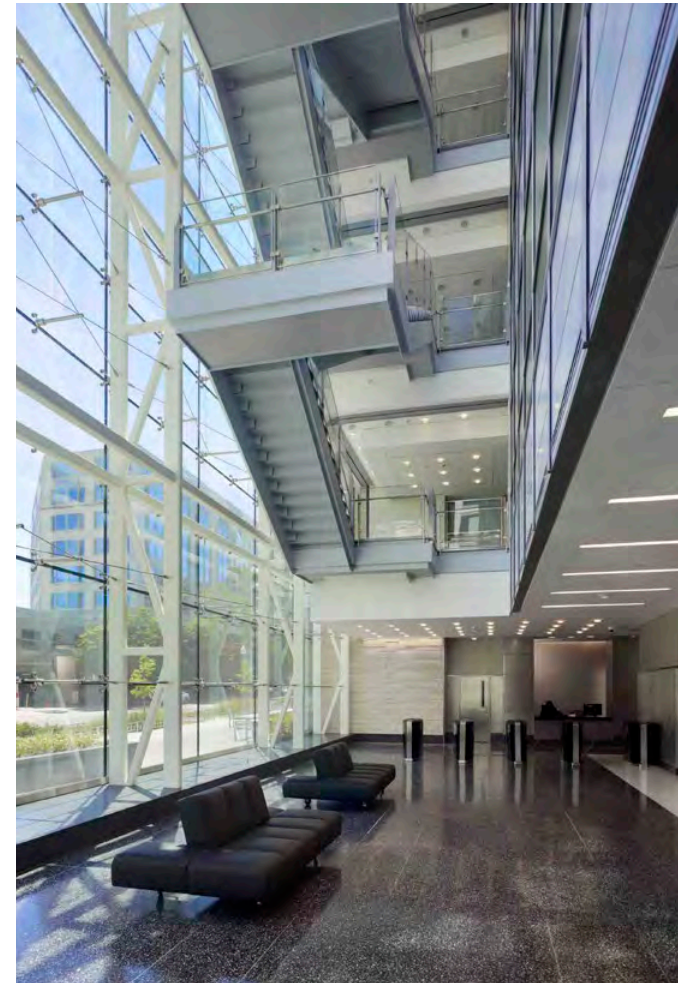
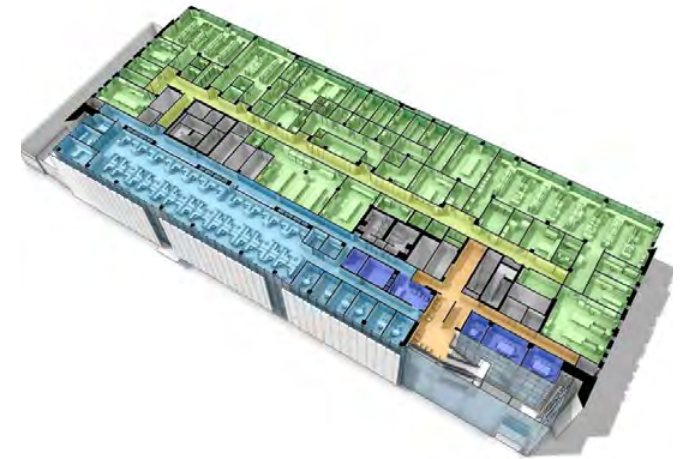
The Consolidated Lab brought together four different municipal departments and had to become a catalyst for attracting top talent. The building employs and edge atrium at its entrance which has interconnecting stairs and all the conferencing facilities in full view of the building occupants encouraging collaboration between the different departments. A LEED Platinum building, the Lab is a diagram for solar orientation with motorized glass louvers optimizing daylight on the south side, while the east and west facades have limited fenestration. **The building visually expresses its sustainable principles** while fitting in its South East DC streetscape.

The expressive southern facade dominates the street presence of the building while the limestone frame connects to "official Washington."



"The Consolidated Forensics Lab is one of the most important projects of my administration and key to improving the criminal justice system in the District."

-Adrian A. Fenty, (former) Mayor







RIYADH, SAUDI ARABIA

KAPSARC Mosque

ROLE Senior Architectural Designer

COMPLETED 2014

SIZE 10,225 sq. ft.

SELECT AWARDS

AIA DC - 2016 Honor Award for Excellence in Architecture

The Chicago Athenaeum: Museum of Architecture and Design and The European Centre for Architecture Art Design and Urban Studies- The International Architecture Award

Iconic World - Iconic Awards, Best of the Best in Architecture, Public

Faith & Form magazine and The Interfaith Forum on Religion, Art and Architecture - Honor Award - New Religious Architecture

SELECT PUBLICATIONS

"KAPSARC Mosque / HOK"

Arch Daily-March 2015

"Saudi Arabian Spiritual Inspiration"

Middle East Architect-March 2015

"HOK Clads Community Mosque In Saudi Arabia With Perforated Patterning"

Design Boom-January 2015

"12 Beautiful Modern Worship Spaces"

Fast Company-January 2015

"Faith & Form's 2014 Religious Art & Architecture Award Rewards Diversity In Religious Design"

Arch Daily-January 2015

"2014 International Awards Program For Religious Art & Architecture"

Faith & Form-December 2014

"Project Of The Month"

Cityscape-December 2014

"Inauguration Of The King Abdullah Masjid"

KAPSARC News-February 2014

"Setting A Benchmark In Sustainable Residential Design"

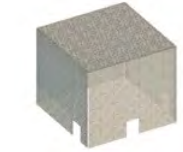
Cityscape-March 2013



skin type "d" (exterior exoskeleton) ▲



skin type "c" (structural) ▲



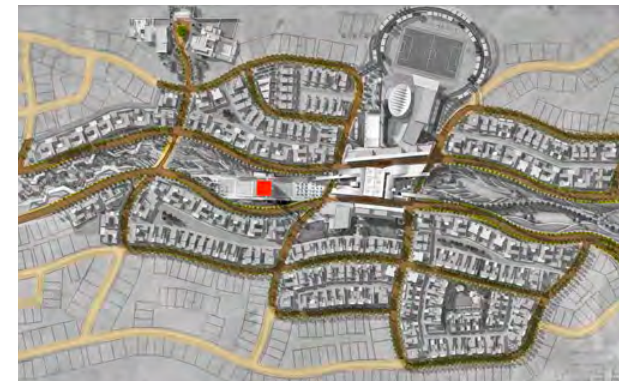
skin type "b" (sound attenuation) ▲



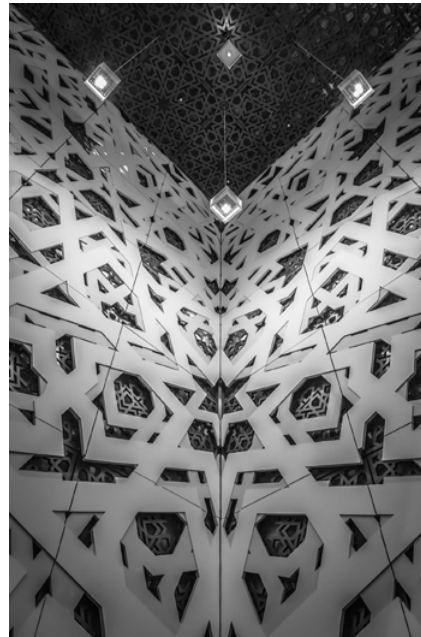
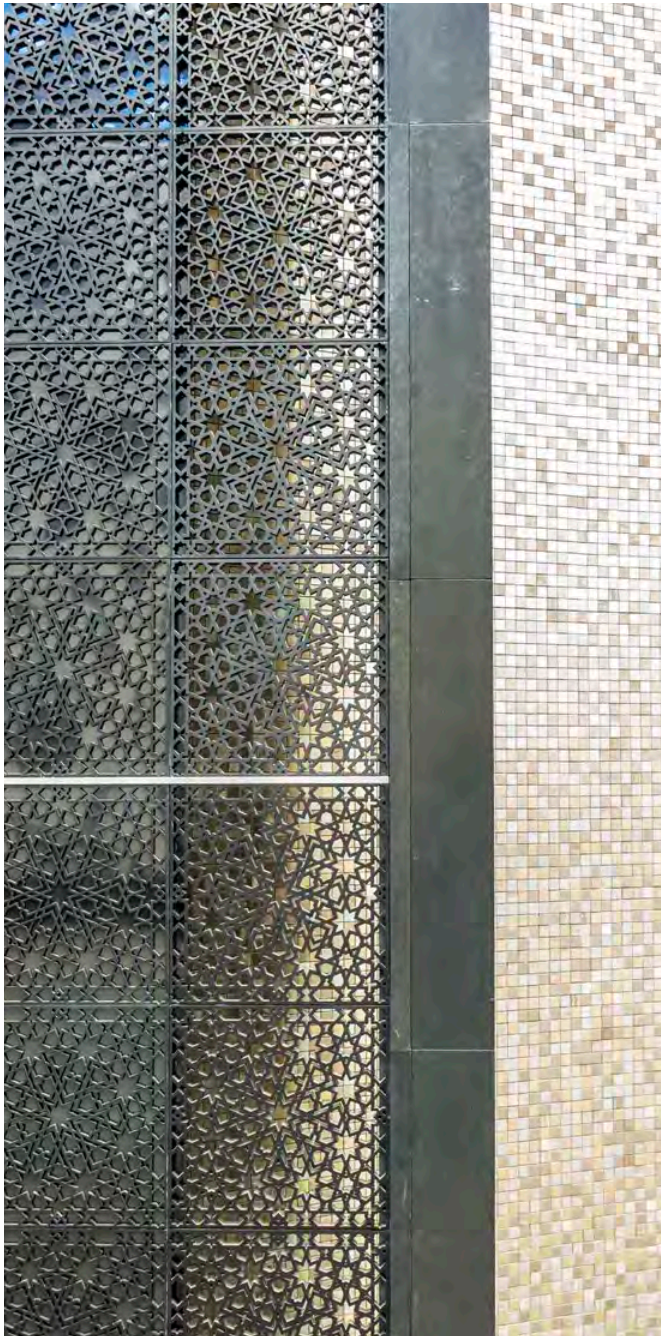
skin type "a" (interior surface) ▲

I have personal knowledge of the nominee's responsibility for the project listed above. That responsibility included: Principal-In-Charge, largely responsible for design, entitlements, project management and consultant team direction. The nominee's firm executed the work

Set within the planned community for a research institute, the KAPSARC mosque is at the heart of the site, set in a place of honor much as religious architecture has defined the plans and organization of cities throughout history. This mosque is not only the spiritual center of the community, but also the most memorable building in the complex. **The architecture respects the Arabic tradition of geometric complexity while exhibiting an architecture that is both inspirational and forward-looking** as befits the environs of this research institute.

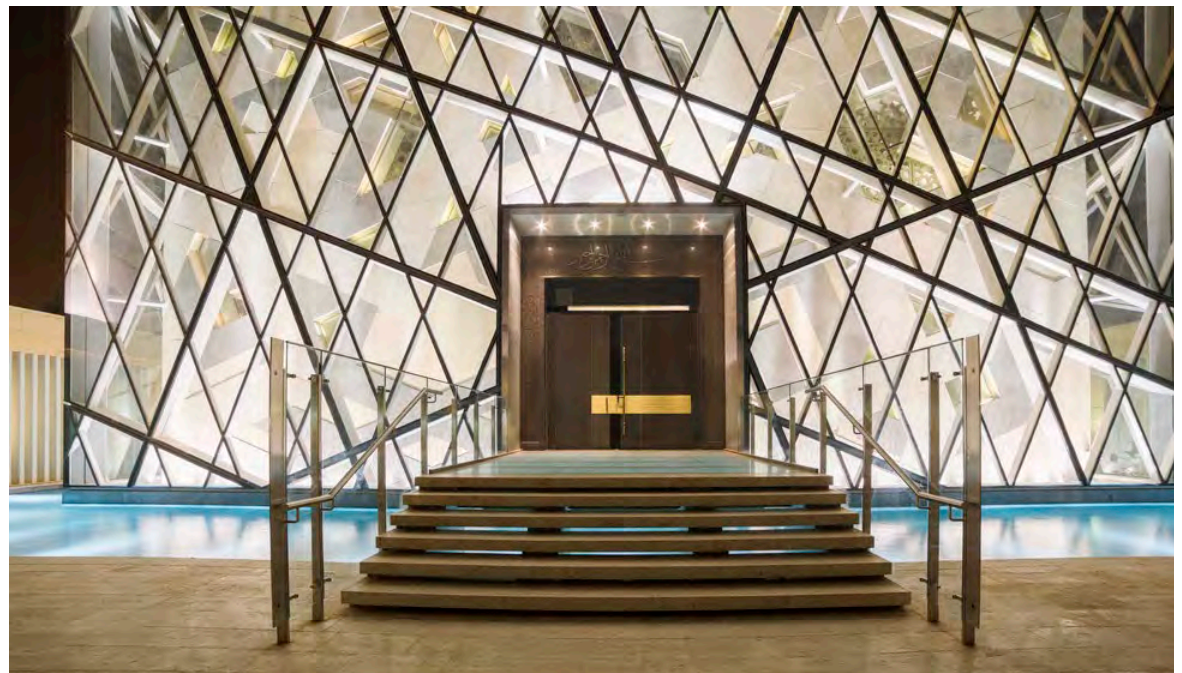


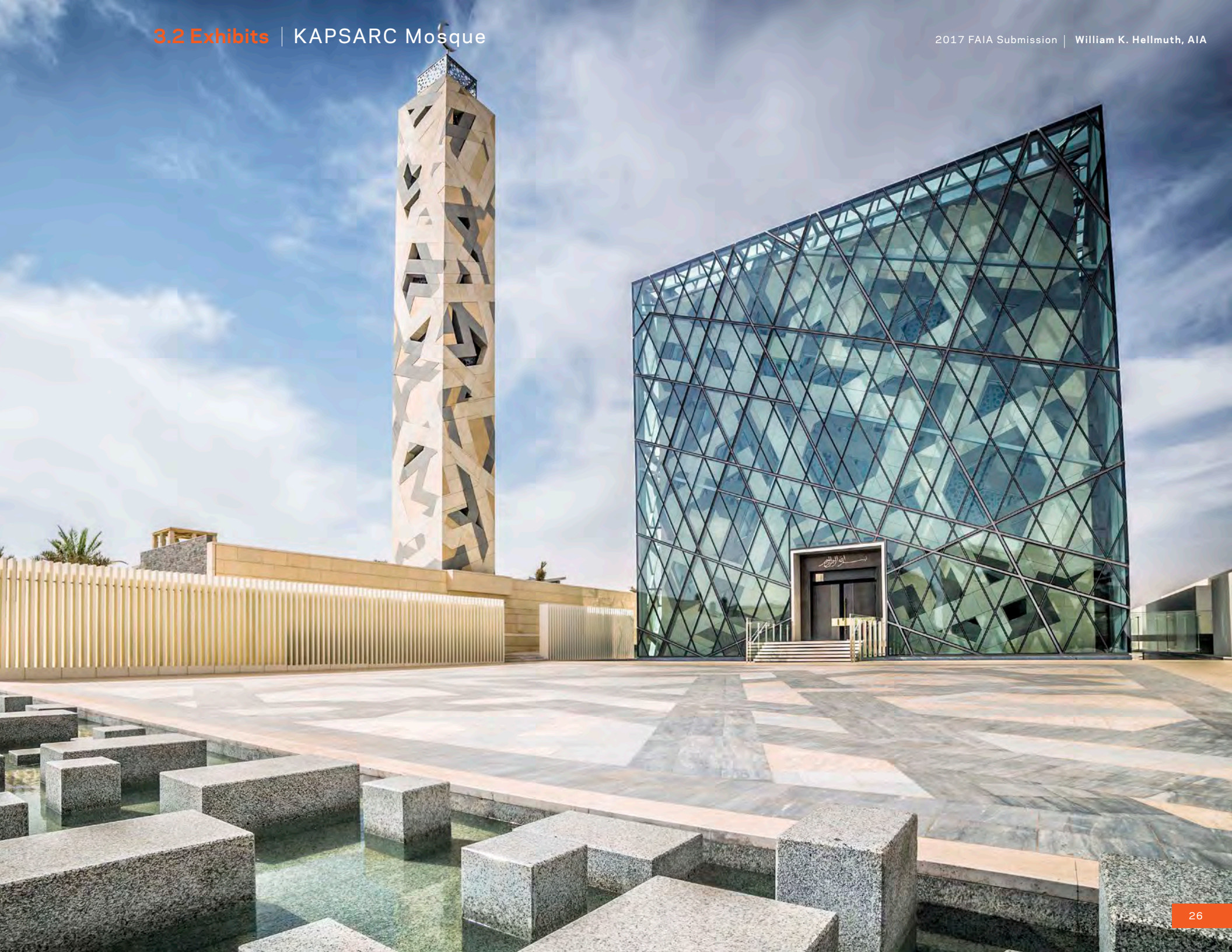
Susan K. Williams
HOK Managing Principal



"The design of this mosque does everything well. It finds a way to not succumb to regurgitated conventionality but instead finds artistic ways to capture tradition and expressing the time and place in which it is built. Superbly crafted and designed, the building itself is a cause for conversation. The light emanating from the building is inspirational. Perhaps it will start new traditions."

-Jury comments, 2014 Religious Art and Architecture Awards







CHANTILLY, VIRGINIA

National Air & Space Museum Stephen F. Udvar Hazy Center

ROLE Senior Architectural Designer**COMPLETED** 2003**SIZE** 708,000 sq. ft.**SELECT AWARDS**
 AIA Northern Virginia - Award of Excellence

 Fairfax County Exceptional Design Awards
Program - Honor Award

 NAIOP Northern Virginia - Award of Excellence,
Best Building
SELECT PUBLICATIONS
 "Virginia Air Show"
Architectural Digest-April 2008

 "Winged Migration"
Washington Post-December 2003

 "Building America's Hangar"
Lin Ezell -2004

 "Great New Buildings of the World"
Harper Design


I have personal knowledge of the nominee's responsibility for the project listed above. That responsibility included: Principal-In-Charge, largely responsible for design, entitlements, project management and consultant team direction. The nominee's firm executed the work

Susan K. Williams
HOK Managing Principal

The design of this grand, institutional building draws inspiration from the very aviation roots it has been designed to celebrate.

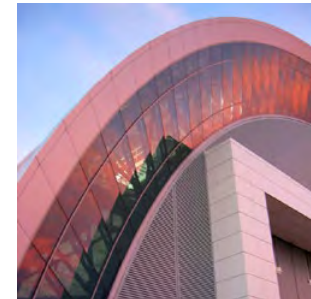
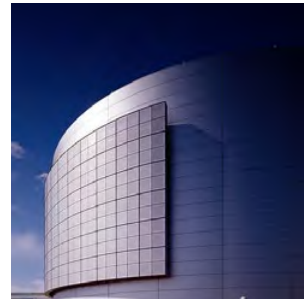
This building draws its inspiration from the Zeppelin hangars which were built during World War II. These structures are so large that clouds could form within them and produce rain. This building of course has extremely strict environmental and humidity controls within it to protect the artifacts.

Collaborating with structural engineers, mechanical engineers and the curators at the Smithsonian Institution this building fits with the context of the airfield at Dulles Airport where it is located. This connection to an operating international airport is important to the mission of the facility.

This aerospace theme is immediately evident upon arrival to the facility. Designers focused most of the exterior detailing elements on the entry facade, which includes the "fuselage" shaped entry lobby, IMAX theater, and the airport-inspired control tower element. These elements are primarily clad in aluminum panels and blue, metallic-looking ceramic tiles that evoke aerospace building materials.

"Following an extremely successful opening, the new facility continues to thrive and, like its founding museum, promises to be one of the most visited museums in the world."

-Harper Designs' Great New Buildings of the World








COLLEGE PARK, MARYLAND

National Oceanic & Atmospheric Administration

CENTER FOR WEATHER AND CLIMATE PREDICTION

ROLE Senior Architectural Designer**COMPLETED** 2012**SIZE** 268,000 sq. ft.**SELECT AWARDS**

 **AIA Maryland** – Citation Award for Institutional Architecture

ASLA Potomac and Maryland – Merit Award

Engineering News-Record – Best Mid-Atlantic Government/Public Building Project

NAIOP Maryland/DC – Award of Excellence – Best Institutional Facility

SELECT PUBLICATIONS

"Maryland Is Epicenter Of National Weather Forecasting"

Public News Service-July 2013

"Swirling Forms For NOAA's New Digs"

Architects + Artisans-March 2013

"National Center For Climate And Weather Protection"

Landscape Architect News-February 2013

"Best Government/Public Buildings: New NOAA Weather Center Interacts With Weather"

Engineering News-Record-December 2012

"Video: HOK's Roger Schwabacher On NOAA's New Center For Weather And Climate Prediction"

Fox 5 WTTG Washington, DC-October 2012

"Opening Of NOAA's Center For Weather And Climate Prediction: Potential Game Changer In Forecasting"

The Washington Post-October 2012

"NOAA's World-Class Weather And Climate Prediction Center Opens At University Of Maryland At College Park"

NOAA News-October 2012



I have personal knowledge of the nominee's responsibility for the project listed above. That responsibility included: Principal-In-Charge, largely responsible for design, entitlements, project management and consultant team direction. The nominee's firm executed the work

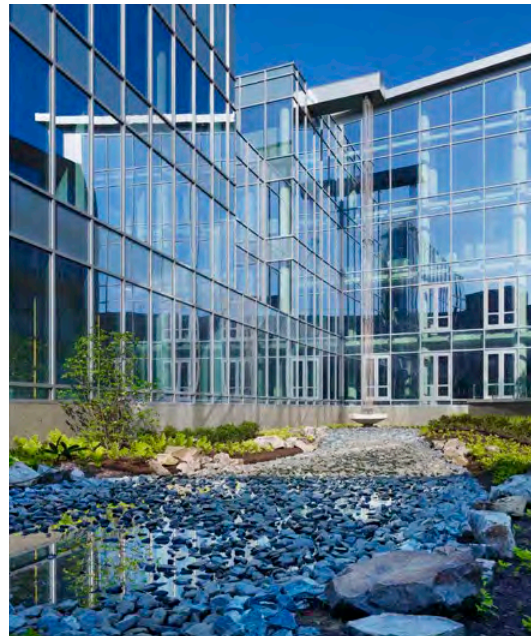
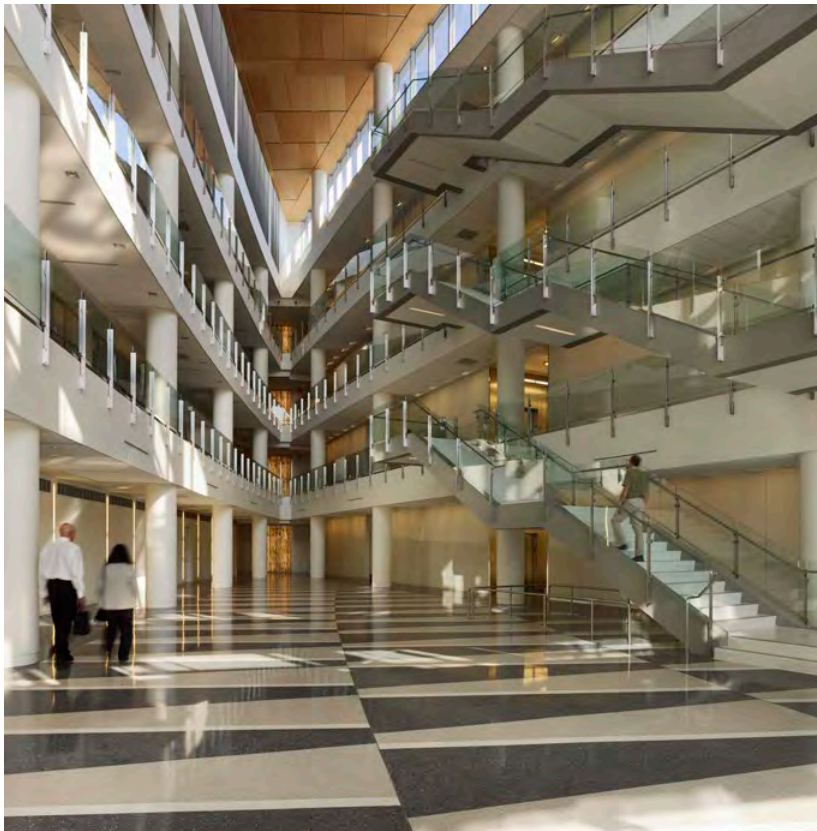
Susan K. Williams
HOK Managing Principal

This project reflects the mission of NOAA. This building's form evokes wave motion, which is a central focus of weather study.

The sloped roof collects rain water and creates a waterfall in the courtyard which can be viewed by the building's occupants and charges the bio-retention swales that surround the building.

To support the organization's mission of understanding and predicting changes in the earth's environment, **the design reduces the Center's impact on the environment and physically embodies man's relationship to nature.** Just as natural systems do not operate in straight lines, the building is configured in a series of curving wings that intersect in a central atrium. The building's form is organic, with waves of space.

The north elevation features continuous horizontal bands of windows that allow sweeping views into the woodland preserve. The south elevation consists of a curtain wall with sunscreens that reduce solar heat gain and act as light shelves that bounce daylight into interior spaces.



"It is as if the building is literally alive. I can feel the energy. It is apparent that the facility will foster not only more and better internal collaboration, but also will attract external collaborators. This truly is a world class facility. Your vision for and work on the NOAA project was nothing short of genius."

- David Caldwell, Director of NOAA's Office of Climate, Water and Weather Services, National Weather Service





IRIAN JAYA, INDONESIA


The Guest House at Timika

ROLE Senior Architectural Designer

COMPLETED 1999

SIZE 183,000 sq. ft. / 84 Rooms

SELECT AWARDS

 **AIA DC** – Award for Excellence
Architecture

Located on the edge of the rainforest in Irian Jaya, Indonesia, the Guest House at Timika is an 84-room, full-service hotel designed to reflect the atmosphere of the surrounding rainforest.

The entrance to the hotel complex is through the main lodge building, which acts as the clubhouse for the hotel and houses the reception area, lobby, restaurant, lounge, meeting rooms, fitness center, and the back-of-the-house functions.

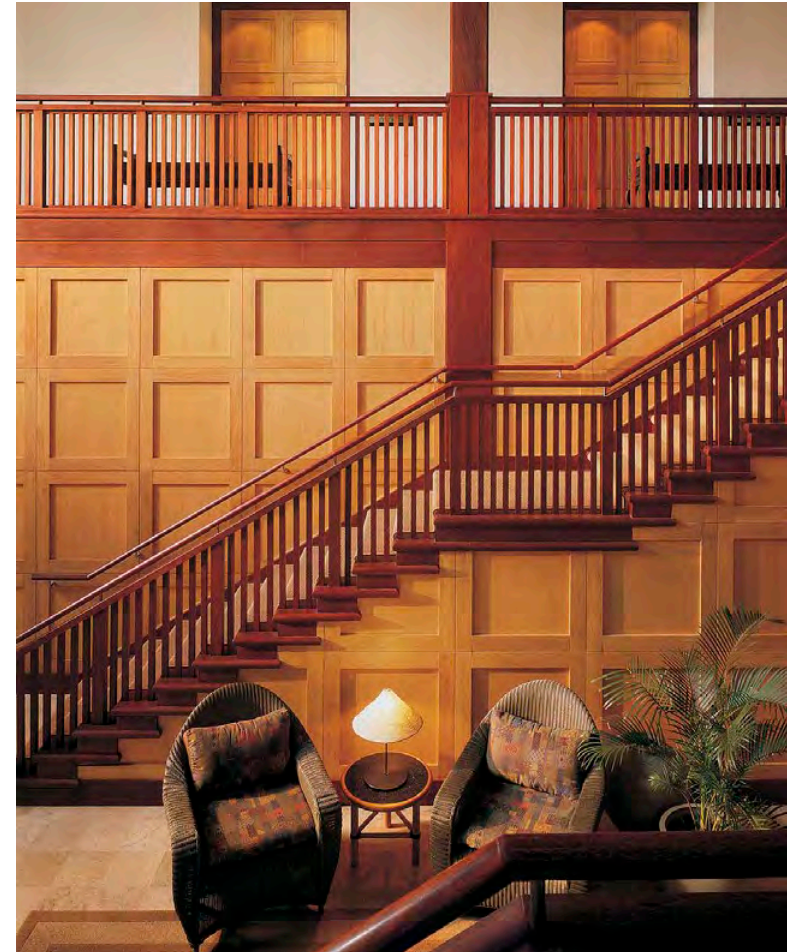
Bill led the design team's collaboration with local artisans to create intricate woodcarvings and textile weavings throughout the facility.

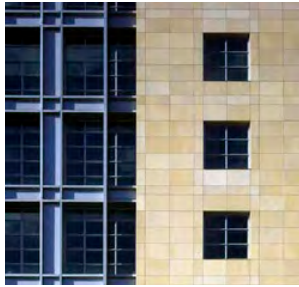
This eco-hotel sits gently within the landscape. Elevated on piloti, **the guest room bungalows hover above the rain forest floor allowing the flora and fauna to coexist with the structure**, and they are linked with an elevated walkway which becomes a nature trail extending into the rain forest.

I have personal knowledge of the nominee's responsibility for the project listed above. That responsibility included: Principal-In-Charge, largely responsible for design, entitlements, project management and consultant team direction. The nominee's firm executed the work

Susan K. Williams
HOK Managing Principal








MOSCOW, RUSSIA

United States Embassy

ROLE Senior Architectural Designer**SELECT AWARDS**
 *AIA Washington, DC – Award of Merit*
COMPLETED 2000**SIZE** 215,000 sq. ft.

The US Embassy in Moscow is a complete renovation and partial demolition of the building that had been built 20 years earlier and never occupied.

While the original structure was a brick cube with tiny windows, the design breaks that form, introducing a large curved curtain wall which extends beyond the original structure. The glass bay looks out across an urban park toward the Russian White House and reflects the open relationship between the two countries at the time of the fall of the “iron curtain.”

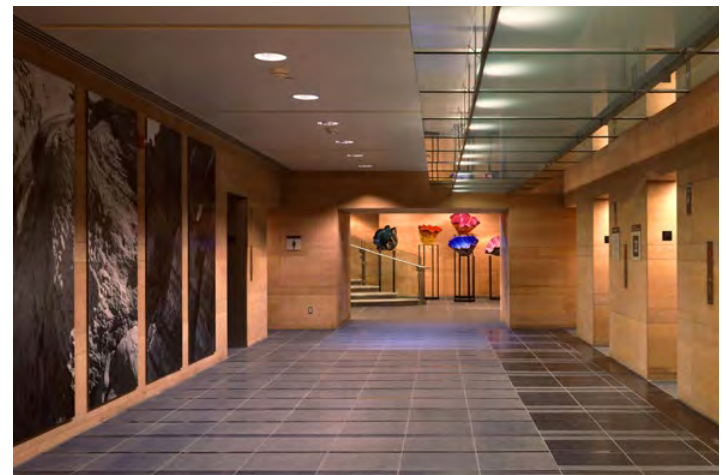
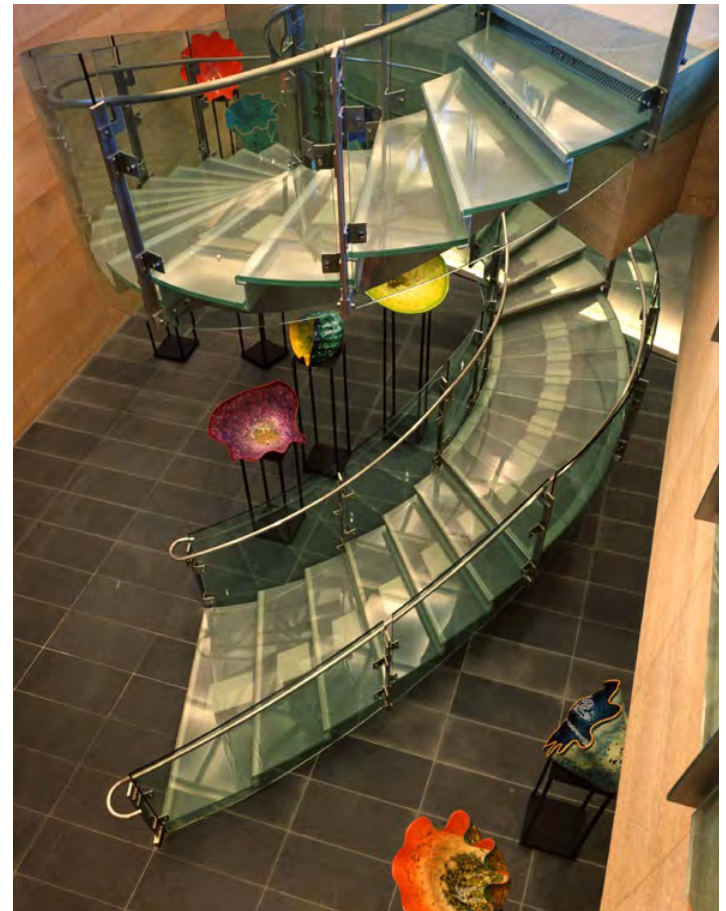
Collaborating with technical experts in security and blast design, the embassy evokes a much more open and humanist environment without compromising any of the inherent security demands of its programs. This is particularly important as subsequent embassies and other secure buildings are faced with similar issues of creating visually accessible, yet secure facilities.



I have personal knowledge of the nominee's responsibility for the project listed above. That responsibility included: Principal-In-Charge, largely responsible for design, entitlements, project management and consultant team direction. The nominee's firm executed the work

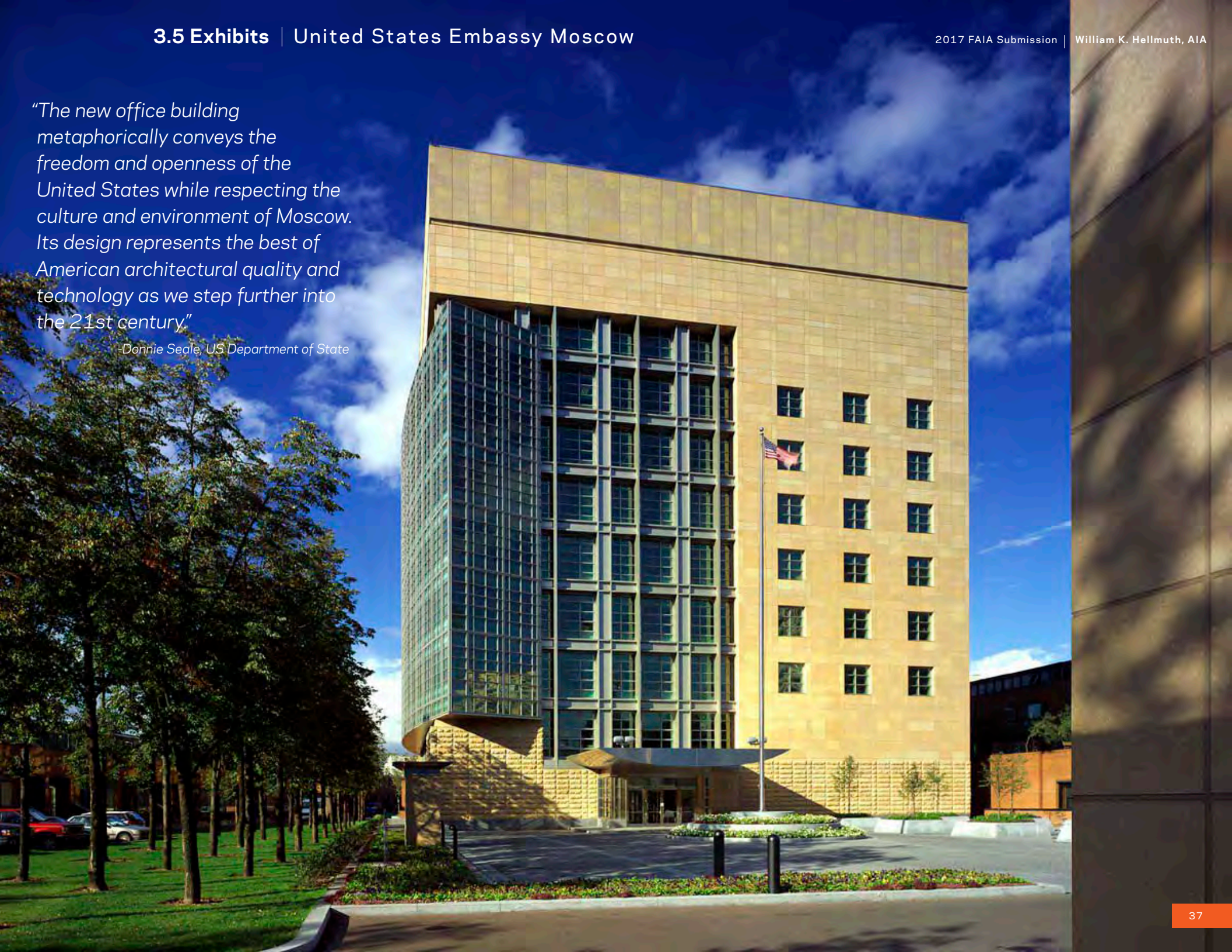
Susan K. Williams
HOK Managing Principal





"The new office building metaphorically conveys the freedom and openness of the United States while respecting the culture and environment of Moscow. Its design represents the best of American architectural quality and technology as we step further into the 21st century."

-Donnie Seale, US Department of State





ABU DHABI, UAE

ADNOC TOWER

ABU DHABI NATIONAL OIL COMPANY

ROLE Senior Architectural Designer**COMPLETED** Fall 2016**SIZE** 1,887,000 sq. ft.

SELECT PUBLICATIONS

"The World's 10 Tallest New Buildings of 2014"

ArchDaily-November 2014

"Top 10 Skyscrapers Under Construction In The GCC"

Gulf Business-August 2014

"New ADNOC Headquarters In Abu Dhabi"

Architecture Scope-October 2013

As a distinctively well-tailored addition to Abu Dhabi's skyline, the tower embodies ADNOC's role as a pillar of Abu Dhabi's economy and society.

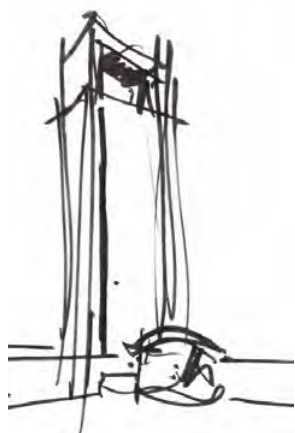
Soaring 342 meters high, the tower accommodates more than 4,000 ADNOC employees and provides flexibility for expansion.

The tower's simple structural form and high-quality materials communicate a sense of quiet dignity. **The clarity and integrity stand out from the twisting, turning and muscular massing of many other tall buildings in the Middle East.** Inspired by the region's culture of minimalist geometry and pattern making, the design creates a symmetrical grid of triangles and parallelograms.

Stretching toward the sky, the stone sides converge to a sharp point before coming together across the top of the tower to create a large architrave-type opening. Honeycomb panels with the same finish used for the roof soffit complete the square-shaped stone arch around the glazed core. The extreme edges of the stone facades give the tower's proportions a different appearance from every angle at ground level.

The architectural design and mechanical systems work in harmony to wrap the structure in a seamless envelope. The design team employed state-of-the-art yet proven design principles to integrate custom details, ventilation pathways, facade maintenance equipment, exterior lighting and other supporting elements into the facades. Screened ventilation louvers, hidden hatches, and integrated railings and tracks take advantage of the building geometries to disappear from view.

Designed to conserve energy and water, the project is targeting LEED Gold certification. It was a pilot for Abu Dhabi's green building rating system, now known as the Estidama Pearl Building Rating System. The tower's solar orientation works and building systems are designed to use 24 percent less energy than the ASHRAE 90.1-2004 baseline.



I have personal knowledge of the nominee's responsibility for the project listed above. That responsibility included: Principal-In-Charge, largely responsible for design, entitlements, project management and consultant team direction. The nominee's firm executed the work

Susan K. Williams
HOK Managing Principal

