

Institute Honors and Awards **Fellowship**



THE AMERICAN
INSTITUTE
OF ARCHITECTS

2016 AIA Fellowship

Entry 107343

Nominee Stuart Narofsky
Organization Narofsky Architecture and Design, PC
Location Long Island, New York
Chapter AIA Long Island

Category of Nomination

Category One - Design

Summary Statement

Stuart Narofsky redefines design of dwellings for living by translating client desires through meaningful relationships and natural response to site, building craft, and material experimentation. Stuart inspires passion for design, innovative thinking, and hands-on experience.

Education

New York Institute of Technology, Old Westbury, New York, 4 years B Arch
Queensboro Community College, Queens, New York, 2 years, Assoc in Science

Licensed in: New York

Employment

Narofsky Architecture & Design PC, 2004 to Present , 11 Years, owner Principal
N2 Design Group, 2000 - 2004, 4 years, Partner Principal
IDT Associates, 1998 -2000, 2 years, Partner Principal
Stuart Narofsky Architect, 1983 - 1998, 14 years, Owner Principal

Bentel & Bentel
ARCHITECTS / PLANNERS / LLP

October 16, 2015

Ms. Diane Georgopoulos, FAIA, Chair
2016 AIA Jury of Fellows
The American Institute of Architects
1735 New York Avenue, NW
Washington, DC 20006-5292

RE: Stuart Narofsky AIA, Candidate for AIA College of Fellows: Category 1 Design

Dear Ms. Georgopoulos and Members of the Jury,

Stuart Narofsky, AIA stands out as a model of excellence for our profession, evidenced by his extraordinary design work and his passion for process and learning that he shares with students and seasoned architects in our country and abroad.

Stuart is an architect with a refined sense of visual relationships and critical design skills, for which his architecture is celebrated nationally and internationally. His focus is on residential architecture, awarded for its individual character with distinctive solutions for each client. Stuart's work embodies the soul of the residents as it captures the essence of each individual site – this is the kind of architecture that is an inspiration to us all.

Constant in Stuart's work is his attention to building for people. He believes strongly in the essential need to express the human touch in his details, inventive use of materials, and natural response to sustainability; he weaves this together as a wholesome work of great integrity and merit. Over the years, I have taken great interest in his design work; it achieves a level of quality that is rare in our region and elsewhere. Stuart truly deserved the AIA Long Island "Lifetime Achievement" Award for his distinguished body of work of 32 years.

I met Stuart in his academic role as an adjunct associate professor in the late 1990s at NYIT's School of Architecture and Design where I was also teaching and am currently the Chair of the Advisory Board. I also knew Stuart because of a close and formative relationship he shared with the founders of our firm, Maria Bentel, FAIA and Dr. Frederick Bentel, FAIA.

Fred was Stuart's thesis advisor and, to this day, he speaks with great pride of Stuart's talent and admires his modesty. Stuart's design abilities were recognized years ago when he became Fred's academic colleague as a professor at NYIT and lifelong friend. Stuart has been mentoring his own students for many years in this country and in Bolivia and Argentina. His generosity and method for teaching and critiquing his students were inspired by Fred and Maria who ardently believed in immersing students in built architecture. Principal of his own firm since 1983, Stuart finds time to educate others in all levels of design, including thesis, and has served on countless juries - including many of Fred's - with his keen design eye and respectful criticism. He lectures nationally and internationally and gives of his experience and leadership to AIA CRAN (Custom Residential Architects Network) and our local AIA chapter.

Stuart "lives" design to the fullest, immersing himself in each client's project, and creating with his hand. Dedicated to design excellence, sustainability, education, and mentorship, he exemplifies a complete architect to his clients, his students, and our profession. I whole-heartedly sponsor the nomination of Stuart Narofsky AIA for Fellowship in the AIA as most worthy of this honor.

Sincerely,



Carol Rusche Bentel FAIA LEED AP
Fellow of the American Academy in Rome '94
2008 Chair of the National AIA Committee on Design
crb@bentelandsbentel.com

Stuart Narofsky redefines design of dwellings for living by translating client desires through meaningful relationships and natural response to site, building craft, and material experimentation. Stuart inspires passion for design, innovative thinking, and hands-on experience.

“For Narofsky, giving expression to being human and dwelling in the world is the most profound meaning architecture could hold.” –John DeFazio, AIA, Process 25

SUMMARY OF ACHIEVEMENTS

Stuart Narofsky, AIA redefines the design of dwellings for living by translating client desires through meaningful relationships and natural response to site, building craft, and material experimentation. His designs explore formal and spatial relationships with open, intuitive analysis and a natural and inventive response to program, site, context, craft, and sustainable resources. Drawing upon early training in Modernism, Stuart has evolved his own distinctive honesty and integrity of expression. Stuart values design process equal to product; his hand is ever-present and in every aspect of a project. From hand-drawn conceptual sketches, to landscape, interiors, and furniture design, to honing materials in the field, he “lives” in his houses through his all-encompassing immersion, and develops ideas to render shape, scale, and proportion enriching the lives of the inhabitants within.

Each design results from Stuart’s singular vision, yet is a unique solution arising from individual client needs and the synergetic relationship of structure and site. A bespoke house for a discerning tailor weaves sustainability and materials reclaimed from the site with fine detailing; nearby on Long Island a contemporary interpretation is nestled comfortably amongst its 80 year-old Tudor neighbors. The jagged, overhanging roof and rugged textures of a Tucson residence marry the home to its southwest landscape and climate. A Manhattan penthouse for a musician sets the stage for an orchestration of structure, spaces, and sound.

Recipient of the AIA Long Island Lifetime Achievement Award, Stuart’s influential body of work of 32 years is highly recognized and disseminated through design awards, national and international publications, videos, filming locations, and exhibitions. Stuart’s participation in design competitions validates his freshness and relevancy of thinking; his winning entries have resulted in built work for a new home for MCA Records and a Ronald McDonald House, and an unbuilt sustainable solution for Pratt Graduate Housing, selected by jurors including Kenneth Frampton and Barry Bergdoll for “the quality of the apartment designs, its sophisticated response to the urban context.”

For over 25 years, on a grass-roots level, Stuart inspires passion for design, innovative thinking, and hands-on experience in peers and next generation architects. He teaches and serves on juries at New York Institute of Technology (since 1989), Pratt Institute, and Drexel University. Dedicated to pro bono service in South America on an ongoing basis (over 7 years), Stuart works hand-in-hand with aspiring architecture students in Bolivia who are genuinely grateful and eager for the benefit of his knowledge, energy, and enthusiasm for design, ideas, and building craft.

Stuart influences colleagues through his leadership roles in AIA, including serving as past president of AIA Long Island. He is instrumental in the national AIA’s Custom Residential Architects Network (AIA CRAN), and has presented at three AIA National Conventions and three AIA CRAN Symposiums to further dialogue on residential design. He has been invited to speak in Bolivia and Argentina, including the 2012 Bienal Internacional De Arquitectura in La Paz to over 500 architects and students.

Founding principal of Narofsky Architecture, and together with partner/wife Jennifer Rusch, Stuart leads a creative, 10-person atelier of dedicated professionals by fostering a family-like, “no-defining-lines” spirit. He is sought out by budding architects and students, including a number of the interns he has mentored from Bolivia, Argentina, Poland, Hungary, Israel, Spain, and New York. Stuart partners and forms lasting relationships with clients, and elevates design quality in communities of otherwise complacent conformity.

In a most complete way, Stuart Narofsky’s devotion to process, out-of-the-box thinking, and hands-on involvement enhance the new perspectives he brings to the art and design of the most basic and intimate of built forms – the dwelling for living.

“to... translate to the building world in a way that means something to us as humans, the scale of us, the temperature of us, the nature of what we need... I really want more of a return to thinking and idea making, and not losing the ability to use our hands...” –Stuart Narofsky, AIA, Excerpt from Interview, Design Manifestoes, modelo.io, www.medium.com



2.1 SIGNIFICANT WORK: RESIDENTIAL

1 SALIK RESIDENCE | WESTPORT, CT | ANTICIPATED 2016

Renovating the home of an acclaimed architect and artist wife that evolved over 30 years, Stuart wove in new additions with respect and care to previous 60's modern, post modern, and arts and crafts expansions to achieve a balanced whole.

Principal Architect & Designer

2 LIFGREN RESIDENCE | PORT WASHINGTON, NEW YORK | ANTICIPATED 2016

Staging a series of matt slabs from top down, Stuart tucked a 1500 square foot waterfront home on the tightly neighbored grounds of a former bungalow colony. Forms spiral up in an origami-like fashion to create private outdoor space and capture views.

Principal Architect & Designer

3 SEAVIEW DEVELOPMENT | EAST HAMPTON, NEW YORK | ANTICIPATED 2015

In the absence of specific client requirements, Stuart took design influences from adjacent farm structures for the design of this 5,000 square foot speculative home.

Principal Architect & Designer

Publications:

Curbed, www.hamptons.curbed.com / *Hamptons Real Estate Showcase Magazine*, August 2015

4 CHABRA RESIDENCE | SANDS POINT, NEW YORK | COMPLETED 2014

This LEED-pending, multi-generational home for an aficionado of modern architecture raised in Chandigarh centers around an indoor multi-functional space, surrounded by wings for private spaces. Materials used inside and out reinforce connections to the outdoors.

Principal Architect & Designer

Awards:

AIA Long Island Archi Award: Sustainable Residence, 2015

Ceramics of Italy, Honorable Mention 2014

Publications:

Contemporist.com: December 2014 / *Prestige Design Magazine*: July 2015: Vol.12 No.4 / *Design Art of Villa IV*: July 2015 / *Metropolis Magazine*: January 2015 issue / *NY Times*: Real Estate, January 9, 2015 / *The Blacklist*, NBC, October 2015, TV

5 FEUER RESIDENCE | GREAT NECK, NEW YORK | COMPLETED 2013

Engaging an architectural review board in the design process, Stuart balanced his client's request for a modern dwelling by fitting it comfortably with traditional Tudor homes in the neighborhood. The project achieved LEED Silver Certification.

Principal Architect & Designer



2.1 SIGNIFICANT WORK: RESIDENTIAL

1 FAGIN RESIDENCE | MATTITUCK, NEW YORK | COMPLETED 2013

Situated on a bluff overlooking the Long Island Sound, this two-bedroom getaway for a city couple juxtaposes a front yard pool to maximize views.

Principal Architect & Designer

2 WINER RESIDENCE | NEW YORK CITY, NEW YORK | COMPLETED 2013

Addressing the challenges of a triangular footprint in Metropolitan Tower, the renovation of an existing apartment focuses on a round zinc bath form to define a convertible den/bedroom and maximize open space and dramatic 57th Street views.

Principal Architect & Designer

3 POOL + POOL HOUSE | PORT WASHINGTON, NEW YORK | COMPLETED 2012

Stuart's solution of nestling a pool and pool house into an adjacent steep rise preserves the owner's mature landscape and creates a tranquil haven for relaxation and connection to nature.

Principal Architect & Designer

Awards:

AIA Long Island Archi Award: Small Project, 2014

4 TAILOR'S HOUSE | OLD WESTBURY, NEW YORK | COMPLETED 2012

A bespoke house tailor-made for a distinguished clothier employs a concrete structure, wood reclaimed from the property, and fine details to weave an environmentally sensitive, low-maintenance structure to its natural site.

Principal Architect & Designer

Awards:

AIA Long Island Archi Award, Sustainable Architecture, 2014

Publications:

Luxe Magazine, 2015

5 CONA RESIDENCE | SAG HARBOR, NEW YORK | COMPLETED 2012

This sustainable-award-winning 3,000 square foot residence configured for spectacular waterfront views embodies the client's mantra "the future is in the house" through geothermal, solar hot water, and photovoltaic systems, LED lighting and low-maintenance materials resulting in dramatic energy savings.

Principal Architect & Designer

Awards:

AIA Long Island Archi Award, Sustainable Architecture, 2012



2.1 SIGNIFICANT WORK: RESIDENTIAL

1 KERNS RESIDENCE | PORT WASHINGTON, NEW YORK | COMPLETED 2011

Designed from top down through underpinning and deep excavation, a modest home set tightly among neighbors is endowed with expansive waterfront views, an impression of height, and green roof, while its privacy preserved.

Principal Architect & Designer

Awards:

AIA Long Island Archi Award: Residential, 2011

Publications:

Aspire Magazine, 2013

2 KOONDEL RESIDENCE | KINGS POINT, NEW YORK | COMPLETED 2010

Balancing modern design with respecting neighborhoods of contemporary traditional homes, Stuart connected this dwelling to its landscape and used low-maintenance materials detailed to its minimal aesthetic.

Principal Architect & Designer

Publications:

Aspire Magazine, 2013

3 LISS RESIDENCE | MILL NECK, NEW YORK | COMPLETED 2009

Previously a one-bedroom modernist home for an art collector, this residence accommodates new owners as a family of five in additions and upgrades that take advantage of views while maintaining a respectful relationship to the original architecture.

Principal Architect & Designer

Publications:

Aspire Magazine, 2013 / *John Wick*, Motion Picture 2014 / *Royal Pains*, TV Series 2009

4 MUSICIAN'S PENTHOUSE | NEW YORK CITY, NEW YORK | COMPLETED 2009

A club-like ambience, large stage area, and runway with landing lights define the owner's lifestyle pursuits of work, music and piloting. The insertion of a structure within a structure provides acoustic control and sound quality.

Principal Architect & Designer

Awards:

AIA Long Island Archi Award: Interior Architecture, 2013

Publications:

Aspire Magazine, 2013 / *Inspiring Interiors-Design Bureau*, 2013 / *Architectural Leaders Today*, 2011



2.1 SIGNIFICANT WORK: RESIDENTIAL

1 COOPER RESIDENCE | EAST HAMPTON, NEW YORK | COMPLETED 2007

Serving as a weekend house for a New York City couple, the composition of this expansion breaks down into pavilions for sleeping, entertaining and defining outdoor porch and deck areas.

Principal Architect & Designer

Awards:

Architectural Digest: *Open Audition New York*-Overall favorite, 2007

Publications:

Architectural Digest: 2007 / *Aspire Magazine*: 2013

2 TOY RESIDENCE | NEW YORK CITY, NEW YORK | COMPLETED 2006

Stuart's proposition to place two bedrooms front and back, flanking common areas, allowed for open space in an apartment that needed to be configured as a long, narrow loft space.

Principal Architect & Designer

Publications:

Spectacular Homes, 2007 Book / *Geberit*, 2012 Advertisement / *The Real Deal Magazine*, 2014

3 DOSHI RESIDENCE | GREAT NECK, NEW YORK | COMPLETED 2005

Spaces for empty nesters progress from private to public, and open to waterfront views while shielding this home from adjacent banality through a compressed solution responding to tight regulations and the site's steep grade.

Principal Architect & Designer

Awards:

AIA Long Island Archi Award: Residential & Multi-Family, 2006

Publications:

Dream Homes of New York, 2007, Book / *Newsday*, 2006 / *Distinction Magazine*, 2006

4 DESERT HOUSE | ST. DAVID, ARIZONA | COMPLETED 2005

Through immersion on site and in indigenous craft, Stuart joined the palette and textures of adobe brick and weathering steel to express a rugged quality that marries this sustainable architecture with its southwest mountain landscape.

Principal Architect & Designer

Exhibition:

AIA New York Now Exhibition 2005



2.1 SIGNIFICANT WORK: RESIDENTIAL

1 CAREY RESIDENCE | BERNARDSVILLE, NEW JERSEY | COMPLETED 2002

This project entailed restoration and modern additions to an existing 20,000 square foot estate that was formerly a private school and originally constructed as a home for the founder of Prudential Insurance Company.

Principal Architect & Designer

2 MALHOTRA RESIDENCE | KINGS POINT, NEW YORK | COMPLETED 2000

Addressing an unusual triangular site, this plan takes advantage of water views past adjacent properties. A fortress-like undulating brick wall forms a “V” to enclose a private elevated courtyard, and accessible roofs expand the otherwise limited landscape.

Principal Architect & Designer

Publications:

Design Times Magazine, 2000 / *Newsday*, 2000

3 SWIDLER RESIDENCE | BROOKVILLE, NEW YORK | COMPLETED 1996

Rather than removing trees for this residence, Stuart’s plan and vertical composition meanders in and around a stand of old linden trees in order to preserve the landscape.

Principal Architect & Designer

4 PATEL RESIDENCE | OLD WESTBURY, NEW YORK | COMPLETED 1995

A sculptural composition of forms and volumes create public-private and indoor-outdoor relationships carved in a modern home for living and entertaining, with materials and artistic features inspired by the clients’ cultural heritage in India.

Principal Architect & Designer

Awards:

AIA New York State: Excellence in Design, 1995

AIA Long Island Archi Award: Residential & Best of the Best 1995

Society of American Registered Architects: Excellence in Design, 1995

Publications:

Residential Architect Magazine, 2000 / *Inside Outside Magazine*, 1997 / *Distinction Magazine* 1996 / *Newsday* 1996 / *New York Times*, 1995

5 SHEVDE RESIDENCE | GREAT NECK, NEW YORK | COMPLETED 1993

Situated on a steep embankment with west water views, this house is configured to surround six levels of indoor and outdoor spaces creating a private enclave on an otherwise exposed site.

Principal Architect & Designer

Awards:

Society of American Registered Architects New York State, Excellence in Design, 1993

AIA Long Island Archi Award, Residential, 1993

Awards:

Remodeled Homes Magazine, 1994 / *Newsday*, 1993



2.1 SIGNIFICANT WORK: RESIDENTIAL

1 FRIED RESIDENCE | BROOKVILLE, NEW YORK | COMPLETED 1988

This residence for empty nesters establishes abstract forms for various living and sleeping functions that connect, juxtapose, and surround a landscaped pool and terrace area.

Principal Architect & Designer

Publications:

Newsday Home, 2006

2.1 SIGNIFICANT WORK: OTHER

2 IMAGINARY LANDSCAPE | NEW YORK CITY, NEW YORK | UNBUILT

Creating a “no access, no real plants allowed” garden on the 12,000 square foot rooftop of the New York Presbyterian Hospital, Stuart connected long-term cancer patients to outdoors visually through glass bays acting as a reverse terrarium and an environmentally-controlled lounge “tree house” allowing family visits. The design uses reclaimed, no-maintenance materials.

Principal Architect & Designer

Awards:

AIA Long Island Arch Award, Un-built Architecture, 2013

3 ATIX HOTEL | LA PAZ, BOLIVIA | ANTICIPATED COMPLETION 2015

Stuart’s firm’s first commission in Bolivia is a 55-room hotel including private and public interiors. Guest rooms with projecting glass bays are oriented towards dramatically rugged mountains, with local materials and building techniques expressing Andean culture.

Principal Architect & Designer

4 BAY CRANE | NEW YORK CITY, NEW YORK | UNBUILT

Constructed with modular units in a sequence allowing for its siting on a crane yard, these offices and workshop space take their cues from the cranes themselves as the structural, graphic, and iconic symbols of the construction industry.

Principal Architect & Designer

5 MCA RECORDS | NEW YORK CITY, NEW YORK | COMPLETED 1998

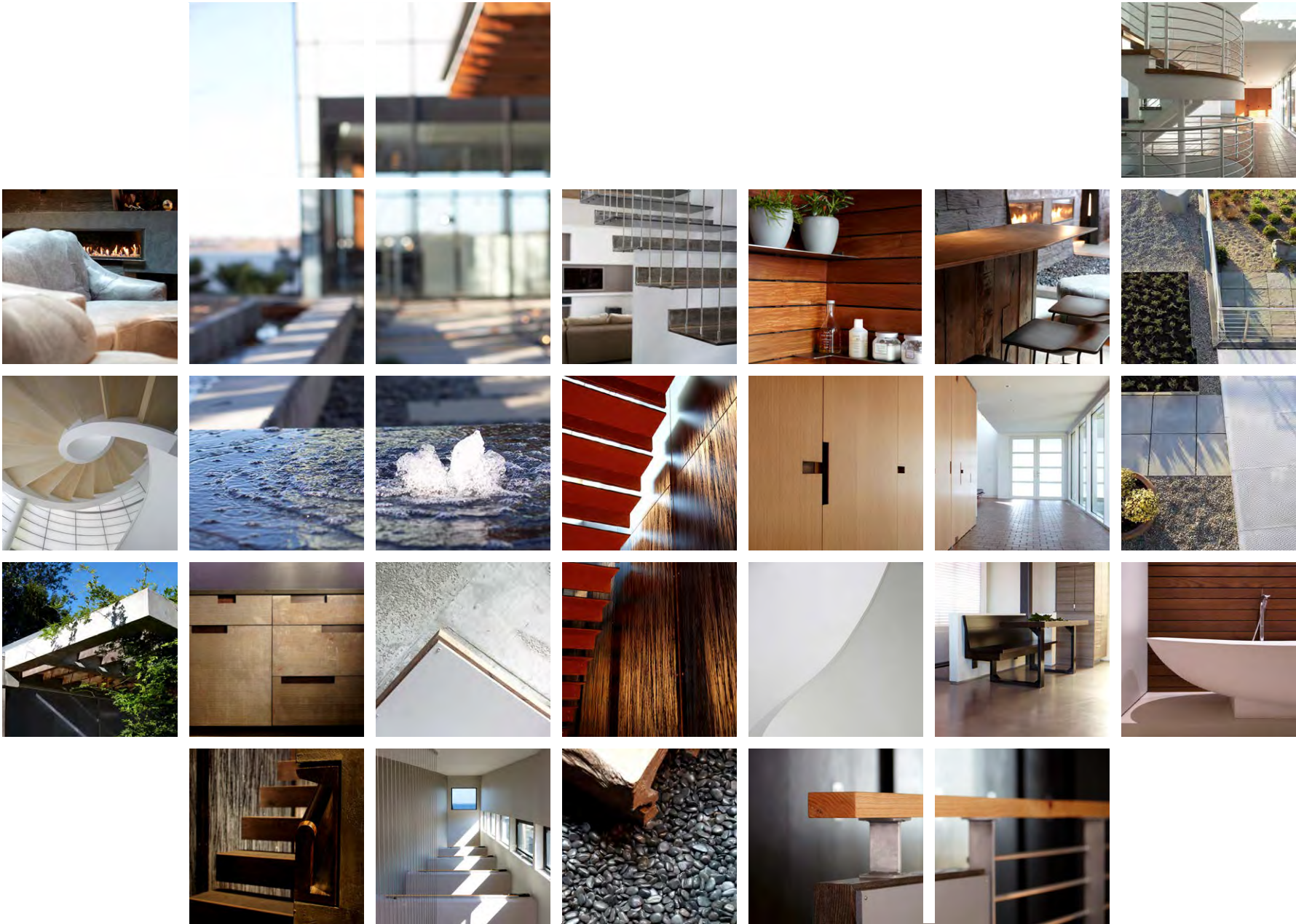
Mondrian’s painting *Broadway Boogie Woogie* was the inspiration for the palette and upbeat pulse of this award-winning, built competition design for a new offices and studio space for MCA Records.

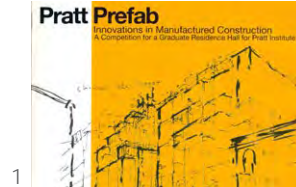
Architect & Designer as Partner of IDT Associates

Awards:

AIA Long Island Arch Award, Interior Architecture, 2001

2.1 DETAILS, FURNITURE, AND FINISHES

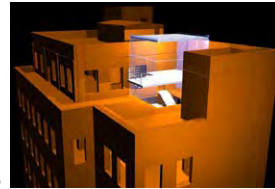




1



2



3



4



5



6

2.1 DESIGN COMPETITIONS

1 PRATT GRADUATE HOUSING COMPETITION, WINNER

Brooklyn, NY, Unbuilt, 2007

JURORS: Kenneth Frampton, Ware Professor of Architecture, Columbia University; Barry Bergdoll, Architecture and Design Curator, Museum of Modern Art; Tom Hanrahan, Dean, School of Architecture, Pratt Institute; Christopher Kasik, Director of Residential Life, Pratt Institute; Richard Scherr, Dir. of Facilities Planning and Design, Prof. of Architecture, Pratt

"Narofsky Architecture's submission as the winning scheme...The jurors praised the quality of the apartment designs, its sophisticated response to the urban context, and the strong commitment to modular construction."

2 SUSTAINABLE DESIGN COMPETITION FOR NEW ORLEANS, DESIGN ENTRY

New Orleans, LA, Unbuilt, 2006

This competition involved the design of a mixed-use residential development on land cleared by Hurricane Katrina.

3 ROOFTOP PENTHOUSE COMPETITION, WINNER

Cube on a Roof Design, 2003

This winning submission to an invited competition proposed a multi-purpose glass cube hovering above the roof of an existing building undergoing restoration.

4 RONALD MCDONALD HOUSE COMPETITION, WINNER

New York, NY, Built, 2001, as Partner of N2 Design Group

Stuart's winning proposition expands the existing facility with a vertical building, minimizing the impact on a tight but well landscaped site, preserving outdoor space for parents and siblings of hospitalized children.

5 MCA RECORDS COMPETITION, WINNER

New York, NY, Built, 2001, as Partner of IDT Associates

Mondrian's painting *Broadway Boogie Woogie* was the inspiration for the palette and upbeat pulse of this competition award-winning, built design for a new offices and studio space for MCA Records.

"Stuart's winning competition scheme inspired by Mondrian's painting"

6 PRIVATE VILLA COMPETITION, DESIGN ENTRY

1998-An entrepreneur invited Michael Graves, Steven Holl, Robert AM Stern, and Stuart Narofsky to design a villa on 11 acres influenced by a narrative about a family of six living through many life cycles. Steven Holl's design was selected, but Stuart was invited to associate and ultimately retained to detail and oversee construction.

AIA LONG ISLAND HABITAT FOR HUMANITY, RUNNER UP

Presented to Stuart Narofsky, 1997

Stuart's concept creates a kit of parts for readily available building components such as pre-made wood trusses, concrete drywells, Kalwall panels, and window assemblies; thus avoiding stick framing and drywall.



2.1 PROFESSIONAL LEADERSHIP POSITIONS

AIA CUSTOM RESIDENTIAL ARCHITECTS NETWORK (AIA CRAN)

National, Advisory Group Member & Education Committee Chair-Since 2010

AIA LONG ISLAND

President 1998-1999, Executive Board Member 1993-2000

2.1 PROFESSIONAL MEMBERSHIPS

AMERICAN INSTITUTE OF ARCHITECTS (AIA)

1983 - Present

AIA LONG ISLAND

1983-2004, 2011 - Present

NATIONAL COUNCIL OF ARCHITECTURAL REGISTRATION BOARDS (NCARB)

1983 - Present

CONFERENCE OF RESIDENTIAL ARCHITECTS

2004 - 2014

UNITED STATES GREEN BUILDING COUNCIL

2006 - 2013, LEED AP since 2008

COLEGIO DEPARTAMENTAL DE ARQUITECTOS LA PAZ

Honorary Member 2012

AIA NEW YORK

2004-2011

ARCHITECTURAL LEAGUE OF NEW YORK

1990-2011

COLEGIO DEPARTAMENTAL DE ARQUITECTOS SANTA CRUZ

Honorary Member 2011

SOCIETY OF AMERICAN REGISTERED ARCHITECTS

1985-1996

2.1 ACADEMIC INVOLVEMENT AND JURIES

NEW YORK INSTITUTE OF TECHNOLOGY, NEW YORK, NY

Associate Professor of Architecture - 1989-2003, Design Studio 3-6; Furniture Design

3rd Year Design Associate Professor - 2014-2015

Juror and Visiting Critic - 1989-Present

UNIVERSIDAD MAYOR DE SAN ANDRES (UMSA), LA PAZ, BOLIVA

Pre-Bienal 5-Day Workshop "La Casa Natural", October 25-30 2012

UNIVERSIDAD NACIONAL DE LA PLATA, LA PLATA, ARGENTINA

Facultad de Arquitectura y Urbanismo

Workshop "Arquitectura Sustentable-Hacia un Nuevo Paradigma", Aug30-Sep1, 2011

PRATT INSTITUTE, NEW YORK, NY

Associate Professor of Architecture - 2008-2009

Design 4th and 5th year; Specializing in Modular Construction

ARQUITECTURA UNIVALLE, BOLIVIA

Visiting Critic of Architecture - 2009

DREXEL UNIVERSITY, PHILADELPHIA, PA

Juror, 2007-2014



2.1 PRESENTATIONS + LECTURES

AIA CUSTOM RESIDENTIAL ARCHITECTS NETWORK (CRAN), MINNEAPOLIS, MN

"Lead Panelist: Modern vs. Traditional in Home Design"-September 21, 2015

SOCIEDAD CENTRAL DE ARQUITECTOS, BUENOS AIRES, ARGENTINA

Lecture "La Nueva Casa Natural"-August 28, 2015

UNIVERSIDAD MAYOR DE SAN ANDRES (UMSA), LA PAZ, BOLIVA

Lecture "La Nueva Casa Natural"-August 25, 2015

MARY E. DARDESS ELEMENTARY SCHOOL

3rd Grade Lecture "The Natural House Revisited"-June 12, 2015

DPC CONTINUING EDUCATION - NY, NJ, LONG ISLAND, WESTCHESTER

Multiple lectures on sustainable residential design -2010 through 2014

MARY E. DARDESS ELEMENTARY SCHOOL

3rd Grade Lecture "Venice and Arches" -December 2, 2014

HARVARD UNIVERSITY, CAMBRIDGE, MA

Harvard Joint Center for Housing Studies "Remodeling Futures" Conference
October 28-29, 2013

HALFMOON EDUCATION, HAUPPAUGE, NY

"Sustainable Energy, Natural Landscapes and Architecture" -September 2013

AIA CUSTOM RESIDENTIAL ARCHITECTS NETWORK (CRAN), SANTA FE, NM

"The New Natural House" -September, 2013

AIA NATIONAL CONVENTION 2013, DENVER, CO

"Residential Design Build" -June 19, 2013

BIENAL INTERNACIONAL DE ARQUITECTURA, LA PAZ, BOLIVIA

Closing Speaker - November 2012

INSTITUTO DE INVESTIGACIÓN Y POSTGRADUADO, LA PAZ, BOLIVIA

Sustainable Architecture Lecture -October 2012



2.1 PRESENTATIONS + LECTURES

DWELL ON DESIGN CONFERENCE, LOS ANGELES, CA

Lecture "The Modernist Influence" -May 23, 2012

AIA NATIONAL CONVENTION 2012, WASHINGTON, DC

"Taking it to the Next Level" -May 19, 2012

SIA COLEGIO DE ARQUITECTOS DE SANTA CRUZ DE LA SIERRA, BOLIVIA

Seminar and Workshop - Seminario Internacional de Arquitectura

"El proceso de diseño arquitectónico"

Architectural Design Process -August 26-27, 2011

UNIVERSIDAD MAYOR REAL Y PONTIFICIA DE SAN FRANCISCO

XAVIER DE CHUQUISACA, BOLIVIA

Facultad de Arquitectura y Ciencias del Habitat

Seminar "Arquitectura Sostenible y El proceso de diseño

arquitectónico" – Sustainable Architecture and Architectural

Design Process -August 23, 2011

DCP ASSOCIATES SUSTAINABLE DESIGN PRACTICE, NEW YORK

"BIM" – "Is it prime time yet?" -August 3-4 2011

AIA NATIONAL CONVENTION 2011, NEW ORLEANS

"BIM for Residential Architecture? A Small Firm Primer" -May 6, 2011

AIA CUSTOM RESIDENTIAL ARCHITECTS NETWORK (CRAN), AUSTIN, TX

3rd Annual Symposium "BIM" – "Is it prime time yet?" -October 2010

AIA LONG ISLAND CHAPTER PRESENTATION, NEW YORK

The Design & Implementation of a LEED Certified Building

The Natural House Revisited - Transition to Sustainable Design -May 2010

COLEGIO DE ARQUITECTURA DE COCHABAMBA, COCHABAMBA, BOLIVIA

Sustainable Architecture and Development Process Lecture -July 2009

INSTITUTO DE INVESTIGACIÓN Y POSTGRUADO, LA PAZ, BOLIVIA

Practicing Architecture Today in New York Lecture -April 2008



2.2 SIGNIFICANT AWARDS, HONORS, AND RECOGNITIONS

INDIVIDUAL AWARDS

AIA LONG ISLAND LIFETIME ACHIEVEMENT AWARD

Presented to Stuart Narofsky, AIA, LEED AP, 2013

AIA LONG ISLAND LEADERSHIP AWARD

Presented to Stuart Narofsky, AIA, 1999

AIA LONG ISLAND PRESIDENTIAL CITATION

Presented to Stuart Narofsky, AIA, 1994

PROJECT AWARDS

CERAMICS OF ITALY

Residential Honorable Mention, Chabra Residence, 2014

BEST OF HOUZZ, NATIONAL

2015, 2014, 2013, 2012

OPEN AUDITION NEW YORK: OVERALL FAVORITE

Cooper Residence, 2007

QUEENS CHAMBER OF COMMERCE AWARD

Multi-Family High Rise, Ronald McDonald House of Long Island, 2006

As Partner of N2 Design Group

SOCIETY OF AMERICAN REGISTERED ARCHITECTS

Excellence in Design Award, Patel Residence, October 1995

SOCIETY OF AMERICAN REGISTERED ARCHITECTS NEW YORK STATE

Excellence in Design Award, Shevde Residence, June 1993

2.2 SIGNIFICANT AWARDS, HONORS, AND RECOGNITIONS

AIA CHAPTER DESIGN AWARDS



AIA LONG ISLAND ARCHI AWARD 2015
Sustainable Architecture
Chabra Residence, Sands Point, NY



AIA LONG ISLAND ARCHI AWARD 2014
Small Project
Pool + Pool House, Sands Point, NY



AIA LONG ISLAND ARCHI AWARD 2014
Sustainable Architecture
Tailor's House, Old Westbury, NY



AIA LONG ISLAND ARCHI AWARD 2013
Un-built Architecture
Imaginary Landscape, NY Presbyterian Hospital, NY, NY



AIA LONG ISLAND ARCHI AWARD 2013
Interior Architecture
Musician's Penthouse, New York, NY



AIA LONG ISLAND ARCHI AWARD 2012
Sustainable Architecture
Cona Residence, Sag Harbor, NY



AIA LONG ISLAND ARCHI AWARD 2011
Residential
Kerns Residence, Port Washington, NY



AIA LONG ISLAND ARCHI AWARD 2006
Residential & Multi-Family
Doshi Residence, Great Neck, NY



AIA LONG ISLAND ARCHI AWARD 2001
Interior Architecture
MCA Records, New York, NY
As Partner of IDT Associates



AIA NEW YORK STATE EXCELLENCE IN DESIGN AWARD 1995
Patel Residence

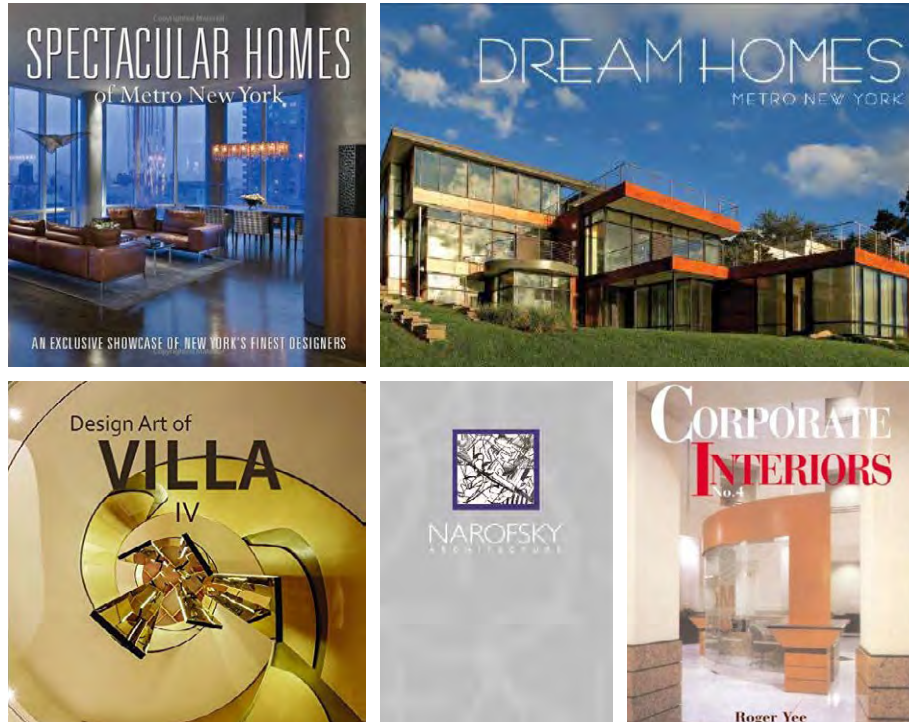
AIA LONG ISLAND ARCHI AWARD 1995
Residential
Best of the Best
Patel Residence, Old Westbury, NY
Patel Residence, Old Westbury, NY



AIA LONG ISLAND AWARD 1993
Interior Architecture
Dankner Medical Office, New York City, NY



AIA LONG ISLAND ARCHI AWARD 1993
Residential
Shevde Residence, Great Neck, NY



2.3 SIGNIFICANT PUBLICATIONS: BOOKS

DESIGN ART OF VILLA | 2015

Preface by Stuart Narofsky
20 Page Coverage of a Sustainable Waterfront
Chabra Residence, Sands Point, NY

PROCESS 25 | 2008

Monograph of 25 years of the architectural design of Stuart Narofsky
Preface by John DeFazio

SPECTACULAR HOMES OF NEW YORK | 2008

Feature article showcasing the firm's work

DREAM HOMES OF NEW YORK | 2007

Feature Article showcasing the firm's work, Feature Cover: Doshi Residence

1000 ARCHITECTS WORLDWIDE | 2004

International pictorial dictionary of architecture firms
Sivan Residence

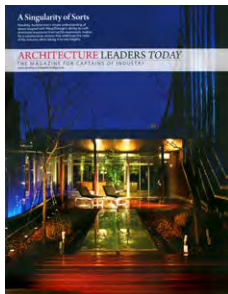
CORPORATE INTERIORS | 2001

Examples of work
MCA Records, Prime Brokerage offices for ABN/AMRO Optical heights



"Narofsky practically invented thinking outside the box, because that is how his mind works."

--Amy Holl Ahearn,
"Dually Noted,"
Aspire, Autumn 2013



2.3 SIGNIFICANT PUBLICATIONS: PERIODICALS

LUXE MAGAZINE | 2015

Surface Appeal, Tailor's House

FLORIDA DESIGN MAGAZINE | 2015

Chabra Residence

PRESTIGE DESIGN MAGAZINE | 2015

A Guarantee of Posterity, Chabra Residence

HAMPTONS REAL ESTATE SHOWCASE MAGAZINE | 2015

Breaking the Norm, features Narofsky Architecture's Hamptons Project

ASPIRE MAGAZINE | 2013

Dually Noted, Residences featured: Liss, Koondel, Cooper, Kerns, & Merin

INSPIRING INTERIORS-DESIGN BUREAU | 2013

Playing Dirty, Musician's Penthouse

AIA ARCHITECT MAGAZINE | 2011

The New Normal

ARCHITECTURAL LEADERS TODAY | 2011

Singularity of Sorts, Firm Profile

PUBLICATION OF COLEGIO DE ARQUITECTOS DE SANTA CRUZ-EL JONE | 2011

Arquitectura Sustentable en NYC, Bolivia, Stuart Narofsky Feature

PUBLICATION OF UNIVERSIDAD NACIONAL DE LA PLATA | 2011

Arquitectura Sustentable en NYC, Argentina, Firm profile

OPINION NEWSPAPER, BOLIVIA | 2009

Arquitecto de EEUU hablara sobre arquitectura sustentable

THE MODERN ESTATE | 2009

New Century Modern, 16 page firm profile

NEWSDAY | 2006

AIA Archi Awards Article, Doshi Residence

DISTINCTION MAGAZINE | 2006

Feature Article, Doshi Residence

NEWSDAY HOME | 2006

Feature Article, Fried Residence

DWELL MAGAZINE | 2005

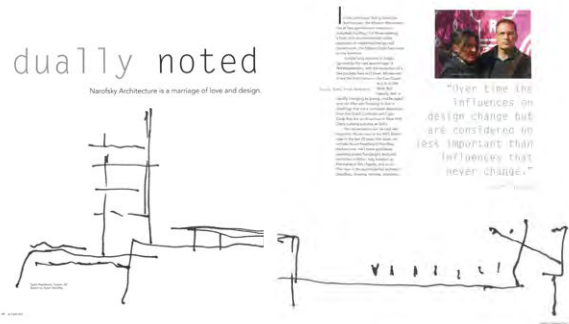
Design Guide: Building Modern in the New York Area

NEWSDAY | 2003

The Luxury of Space, Sivan Residence

NEW YORK TIMES SUNDAY MAGAZINE | 2001

Feature Article, Haber Residence



2.3 SIGNIFICANT PUBLICATIONS: PERIODICALS

NEWSDAY | 2001

Feature Article, Haber Residence

RESIDENTIAL ARCHITECT MAGAZINE | 2001

Stuart Narofsky Profile Feature

DESIGN TIMES MAGAZINE | 2000

Outdoor Entertainment Feature, Malhotra Residence

TRADITIONAL HOME MAGAZINE | 2000

Feature Article, Ennis Residence

RESIDENTIAL ARCHITECT MAGAZINE | 2000

Feature Article, Patel Residence

NEWSDAY | 2000

Feature Article, Malhotra Residence

DESIGN TIMES MAGAZINE | 1999

Outdoor Living Feature, Fried Residence

HOUSE MAGAZINE | 1999

Stuart Narofsky, President AIA L.I. Feature Article

20/20 MAGAZINE | 1999

Feature Article, Optical Heights Retail Store

NEWSDAY | 1998

Feature Article-Home Section, Barnett Residence

INSIDE/OUTSIDE MAGAZINE | 1997

Feature Article published in India, Patel Residence

INTERIOR DESIGN MAGAZINE | 1997

Feature Article, Dankner Medical Office

NEW YORK TIMES | 1996

Feature Article, Yoon Residence

DISTINCTION MAGAZINE | 1996

Feature Article, Patel Residence

DESIGN & BUILD NEW YORK | 1995

AIA New York State Excellence in Design, Patel Residence

NEW YORK TIMES | 1995

Feature Article, Patel Residence

NEWSDAY | 1996

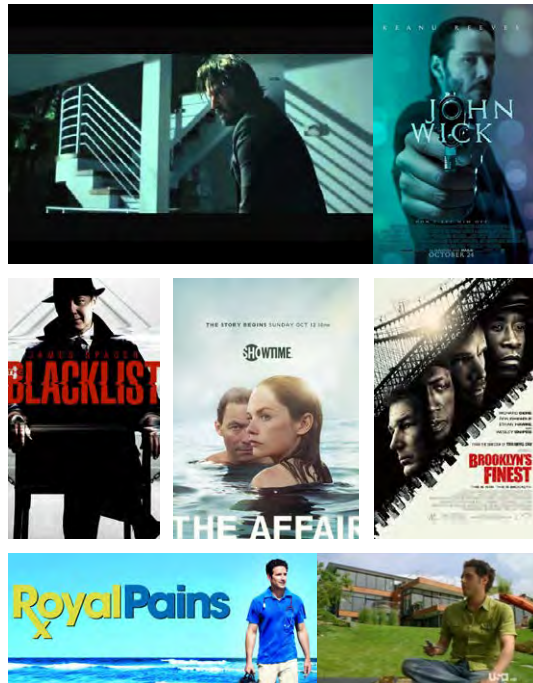
Feature Article, Patel Residence

PHYSICIAN PRACTICE DIGEST | 1994

Feature Article, Dankner Medical Office

NEWSDAY | 1988

Feature Article, Rosenzweig Residence



2.3 SIGNIFICANT PUBLICATIONS: MEDIA AND FILMING LOCATIONS

TV SERIES | NBC | THE BLACKLIST | 2015

Filming Location, Chabra Residence

TV SERIES | SHOWTIME | THE AFFAIR | 2015

Filming Location, Chabra Residence

MOTION PICTURE | JOHN WICK | 2014

Filming Location, Liss Residence

ARCHITECT MAGAZINE ONLINE | VIDEO SERIES | 2011

First featured Architect Video Discussion, Stuart Narofsky

TV SERIES | USA NETWORKS | ROYAL PAINS | 2009

Filming Location, Doshi Residence

TV SERIES | USA NETWORKS | ROYAL PAINS | 2009

Filming Location, York Residence

TV SERIES | USA NETWORKS | ROYAL PAINS | 2009

Filming Location, Liss Residence

MOTION PICTURE | BROOKLYN'S FINEST | 2009

Filming Location, Carey Residence

TELEVISION NETWORKS | BOLIVIA | 2009

Stuart Narofsky Guest Appearance, Talk Show

TV SERIES | POPULAR SCIENCE | 2009

Sustainable Architecture and Development Process

2.3 SIGNIFICANT PUBLICATIONS: INTERNET ARTICLES

DESIGN MANIFESTOS: STUART NAROFSKY OF NAROFSKY ARCHITECTURE

www.modelo.io | Exclusive interview with Stuart Narofsky, August 19, 2015

VIEWS FROM EVERY ROOM

www.nytimes.com | Chabra Residence

WATER TO WATER

www.longislandweekly.com | Doshi Residence Feature

CONTEMPORARY NEW YORK PENTHOUSE

www.designshuffle.com | Musician's Penthouse Feature

STYLISH HOME BUILT IN LONG ISLAND BY NAROFSKY ARCHITECTURE

www.impressiveinteriordesign.com | Chabra Residence

TAKE A LOOK AT A KNOCKOUT MODERNIST RETREAT ON LONG ISLAND

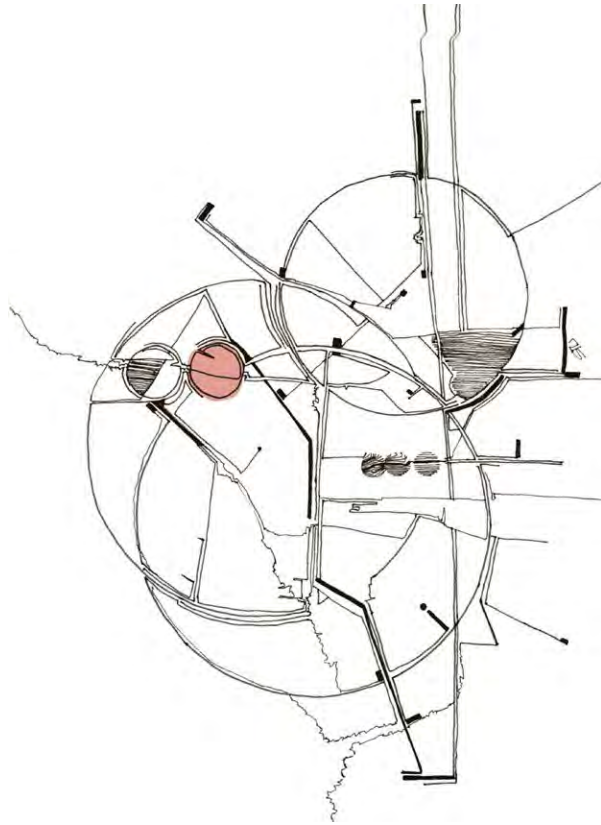
www.curbed.com | Tailor's House

SANDS POINT RESIDENCE BY NAROFSKY ARCHITECTURE

www.homedsgn.com | Chabra Residence

GABLES HOUSE HITS THE MARKET IN EAST HAMPTON

www.hampton.curbed.com | Seaview Development



EXHIBITS LIST

- 1 | **CHABRA RESIDENCE** - Sands Point, NY - 2014
Photographer Credits: Michael Grimm / Costas Picadas
- 2 | **POOL + POOL HOUSE** - Port Washington, NY - 2014
Photographer Credits: Phillip Ennis Photography
- 3 | **FEUER RESIDENCE** - Great Neck, NY - 2013
Photographer Credits: Phillip Ennis Photography
- 4 | **TAILOR'S HOUSE** - Old Westbury, NY - 2012
Photographer Credits: Phillip Ennis Photography
- 5 | **KERNS RESIDENCE** - Port Washington, NY - 2011
Photographer Credits: Phillip Ennis Photography
- 6 | **MUSICIAN'S PENTHOUSE** - New York City, NY - 2009
Photographer Credits: Phillip Ennis Photography
- 7 | **DESERT HOUSE** - St. David, AZ - 2006
Photographer Credits: Jeff Valdez Photography
- 8 | **DOSHI RESIDENCE** - Great Neck, NY - 2005
Photographer Credits: Phillip Ennis Photography
- 9 | **PATEL RESIDENCE** - Old Westbury, NY - 1995
Photographer Credits: Phillip Ennis Photography

EXHIBIT 1: CHABRA RESIDENCE

Sands Point, New York

Situated on three acres on the Long Island Sound with beach access, this residence needed to accommodate three generations of the same family in a structure functioning as a large compound yet respecting the environment. In addition to these requirements, the client, having grown up in Chandigarh, India, had great appreciation for modern architecture.

The bold scale of Stuart's design expresses these influences by creating a large indoor multi-functional space as the main feature, surrounded by wings that contain the private spaces. This two-story central living, dining, entry and lounge space visually expands to the Sound beyond and to a private sculpture garden. The continuity of indoor to outdoor is also reinforced by using the same materials inside and out. As viewed from above, the landscaped rooftops and ground level landscapes blend into a homogenous whole.

The residence is clad with a rainscreen of slim porcelain panels. The entry and surfaces surrounding the inside courtyard are clad in zinc. All the roofs are surfaced with green materials and are accessible as outdoor terraces. Pending LEED certification, the house incorporates sustainable systems, including geothermal heating and cooling (fossil fuel is only used for cooking), photovoltaic panels, LED lighting, water reclamation, super insulation (the entire house is foamed), steel frame (no wood was used), and no-maintenance materials such as the porcelain and zinc.

Architecture Firm of Record & Design Firm

Narofsky Architecture

Completion Date

2014

Role of Nominee

Principal Architect & Designer

Awards

AIA Long Island Archi Award:

Sustainable Residence, 2015

Ceramics of Italy, Honorable Mention 2014

Publications

Contemporist.com: December 2014

Prestige Design Magazine: July 2015: Vol.12 No.4

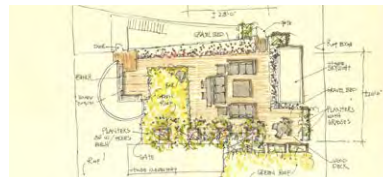
Design Art of Villa IV: July 2015

Metropolis Magazine: January 2015 issue

NY Times: Real Estate, January 9, 2015

TV

The Blacklist, NBC, October 2015



Declaration of Responsibility

I have personal knowledge of the nominee's responsibility for the project listed above.

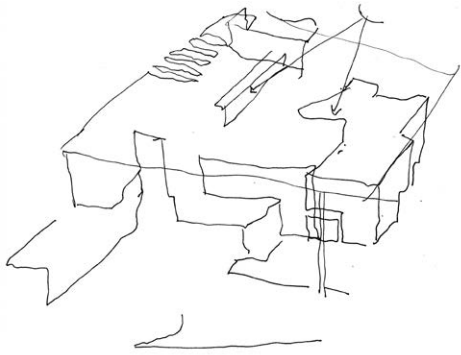
That responsibility included:

Largely responsible for design.

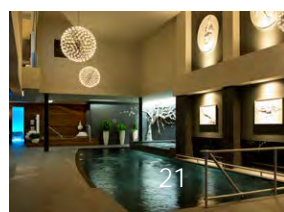
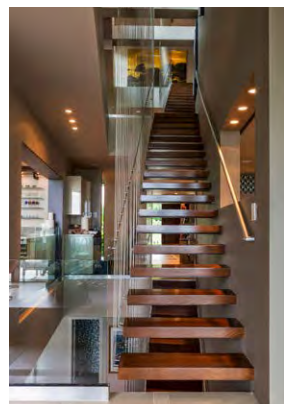
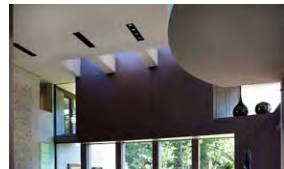
John DeFazio, AIA
Professional Colleague

STUART NAROFSKY, AIA, LEED AP





This multi-generational home showcases an indoor/outdoor pool area, with retractable doors for use in the warm weather seasons, an indoor squash/multi court, golf simulator/theater room, two kitchens (one for cooking Indian food that isolates the spice odors), 7 full bedroom suites, billiard room, family room and a five-car garage.



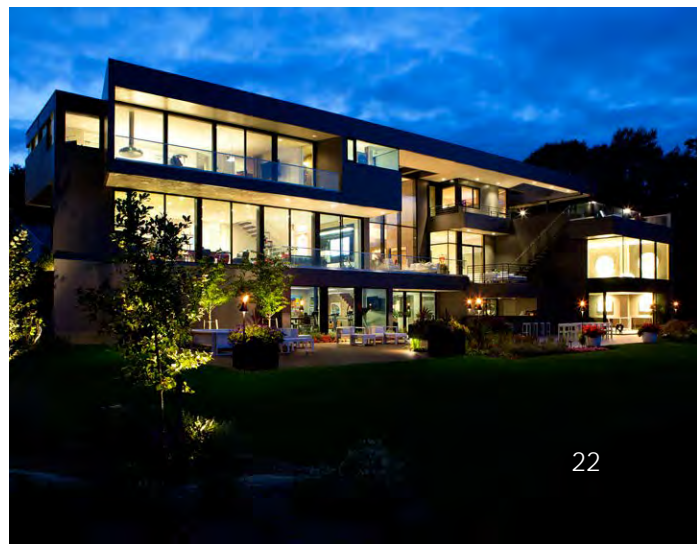
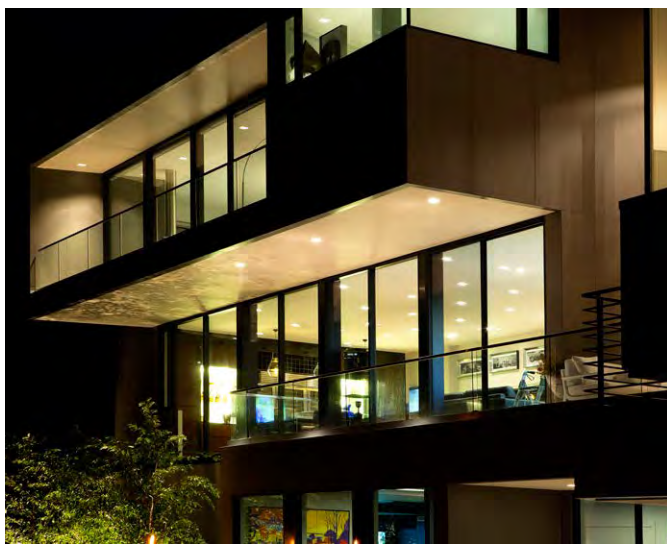


EXHIBIT 2: POOL + POOL HOUSE

Port Washington, New York

Stuart's design of a pool and pool house for a former client preserved a greensward surrounded by mature trees that would have otherwise been compromised through insensitive siting under other hands. Rather than placing the project in the owner's backyard, Stuart's solution moved the pool to an adjacent hill, wedging the pool house into the steep rise to become less of a free-standing structure, and thus minimizing the impact on the landscape. Steps allow access to its roof and a sitting area around a fire pit. Both pool and pool house are situated orthogonally to each other and one wing of the original residence.

The pool has two changing rooms, laundry room, lockers, guest bath and access to an outdoor shower that is incorporated in a private walled in garden space. A textured concrete wall retains the cut section of the slope, and allows the pool to shift to a position that not only prevents any compromise of the rear yard, but also takes advantage of as much sun exposure as possible. An allée of trees placed at the outer pool edge opposite the retaining wall create the sense of a private outdoor room.

The main walls of the pool house are formed in coordinated textured concrete, as are the lower retaining walls that allowed for leveling off of the main patio adjacent to the pool and pool house roof. The extended roof covers a seating area and service bar. The cedar-clad interior creates a spa like experience with a secluded outdoor shower. Other materials include Viroc fiber cement panels and porcelain tiles. The pool water is heated with solar panels and an automatic pool cover is integrated into the pool coping, maintaining the heat in the pool and providing additional child safety. By nestling pool and pool house in the landscape, Stuart created a personal sanctuary for the client's relaxation, enjoyment, and experience of nature.

Architecture Firm of Record & Design Firm

Narofsky Architecture

Completion Date

2012

Role of Nominee

Principal Architect & Designer

Awards

AIA Long Island Archi Award:

Small Project, 2014

Declaration of Responsibility

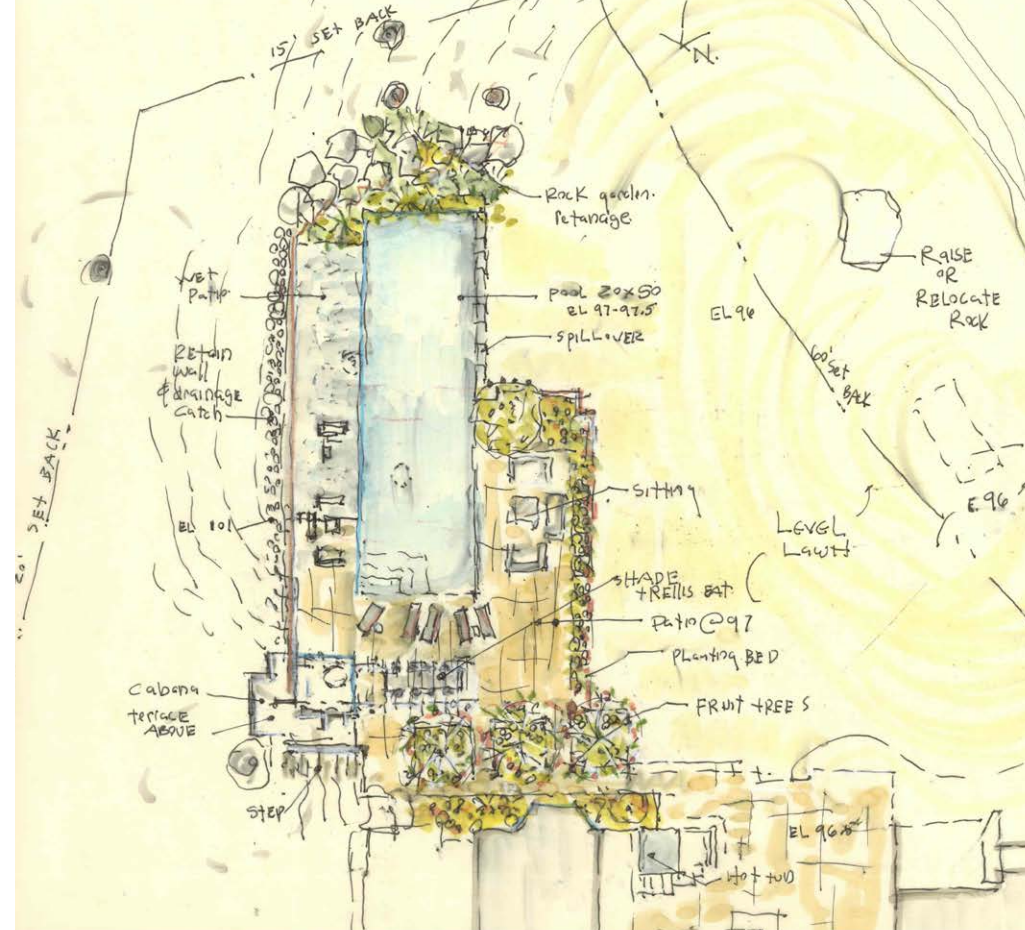
I have personal knowledge of the nominee's responsibility for the project listed above.

That responsibility included:

Largely responsible for design.

 Jennifer Rusch

Principal of Ways 2 Design, Partner



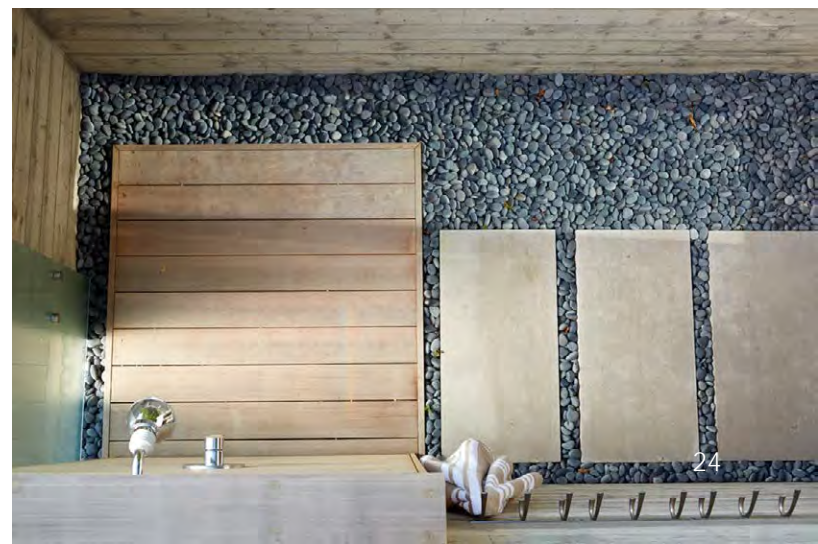


EXHIBIT 3: FEUER RESIDENCE

Great Neck, New York

Architects designing homes balance program, budget, climate, codes, and numerous issues within a cohesive design. For a dwelling in a community with a predisposed architectural review board, the process can be compounded by mandates to conform or be denied. Responding to the request for a modern home from a couple relocating to the United States from Hungary, Stuart faced the challenge of respecting the 20th century Tudor homes in the neighborhood while maintaining the integrity of his design. In order to balance these factors, *Stuart educated and partnered with the architectural review board* in the design process.

Because the narrow but deep site called for an elongated design, Stuart's plan took a shape that defined an inner garden, a two-story main structure, and a one-story guest pod connected by an entry breezeway and circular stair. Another challenge was that the required square footage, including the indoor lap pool desired by the client, could not fit on grade given the lot coverage code restrictions. Stuart depressed the inner courtyard and exposed the basement to it, placing many program elements in that area, including the pool facilities that span the courtyard and connect the guest structure to the main house, thus effectively creating a second inner courtyard.

The initial scheme Stuart presented to the architectural review board involved a mainly flat roof design, with exposed wood structural elements aligning the street scale and proportion with adjacent structures and reinterpreting the Tudor style. During the late night meeting, without the benefit of his client present, the board denied Stuart's proposed design as too modern, and gave options of finding another property or building a traditional conforming house. Stuart instead engaged the board as if a "client" to arrive, after three meetings, at a mutually acceptable solution. By adjusting the rooflines to vary both flat and pitched, Stuart reconciled the otherwise confrontational approaches of his two "clients," and realized a LEED Silver-certified home with a distinctly modern plan and spatial relationships that fits comfortably among its traditional neighbors.

Architecture Firm of Record & Design Firm
Narofsky Architecture
Completion Date
2013
Role of Nominee
Principal Architect & Designer

Declaration of Responsibility

I have personal knowledge of the nominee's responsibility for the project listed above.
That responsibility included:
Largely responsible for design.

Jennifer Rusch
Principal of Ways 2 Design, Partner

STUART NAROFSKY, AIA, LEED AP



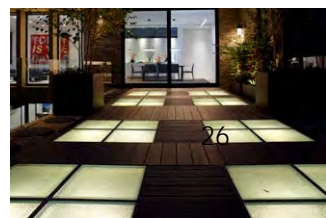
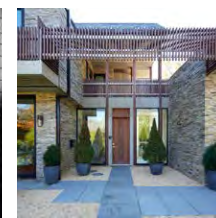
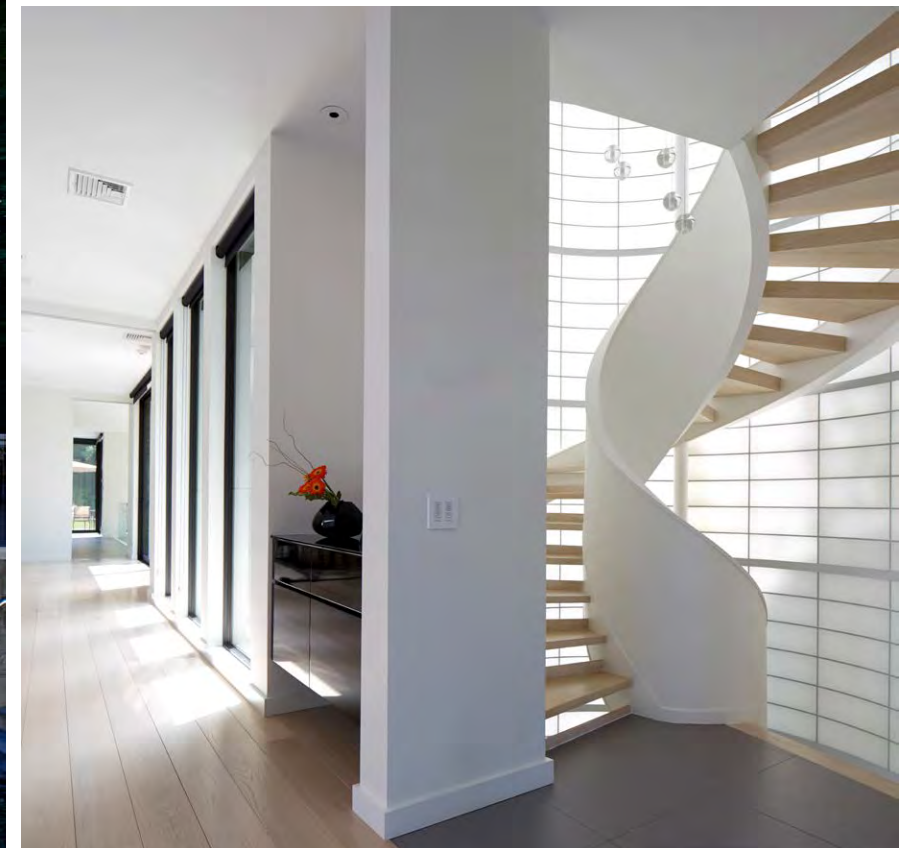


EXHIBIT 4: TAILOR'S HOUSE

Old Westbury, New York

Be-spoke, bi'spōk “Made to order” was the driving force in a collaboration that resulted in a personally defined dwelling for a prominent tailor who enjoys entertaining and gardening. The client desired an environmentally sustainable house, married to its landscape, which included his 3.75 acre mini-arboretum with abstract concrete sculptures and paths.

Stuart responded to program and site by designing a “J” shaped plan surrounding a central garden and future pool. The house rises from the site in a series of volumes that remain a single room in width, allowing for abundant natural light. This upward spiral of spaces evolves from public spaces (kitchen, dining, living) towards private (children’s and master suites and a third floor study). Multiple outdoor rooms and balconies take advantage of natural views.

The home’s concrete structure, frame, floors, significant walls, and roofs minimize component assemblies and create a timeless, low-maintenance environment. Geothermal heating and cooling, superior insulation, sun control, and green roofs contribute to energy performance. Stuart also achieved sustainability in design through the performance, maintenance, and longevity of reclaimed and recycled materials. Resiliency became the key turned by nature’s intervention when Hurricane Irene felled Black Locust trees on the site. Stuart incorporated the wood in the exterior façade, shower benches and floors, a vanity and other water resistant applications. Wood from pin oaks from the site was used for flooring, rail caps, bookcases, and mantels. Wood from buried trees was saved during excavation for a custom-designed dining table and other cabinetry. A green label wood panel system clads interior walls to avoid painting, which was the client’s request. These panels are mounted with exposed facets to oak frames that become the connector to the concrete walls, floors, ceilings, and door jambs.

Architecture Firm of Record & Design Firm

Narofsky Architecture

Completion Date

2012

Role of Nominee

Principal Architect & Designer

Awards

AIA Long Island Archi Award:

Sustainable Architecture, 2014

Publications

Luxe Magazine, 2015

Declaration of Responsibility

I have personal knowledge of the nominee’s responsibility for the project listed above.

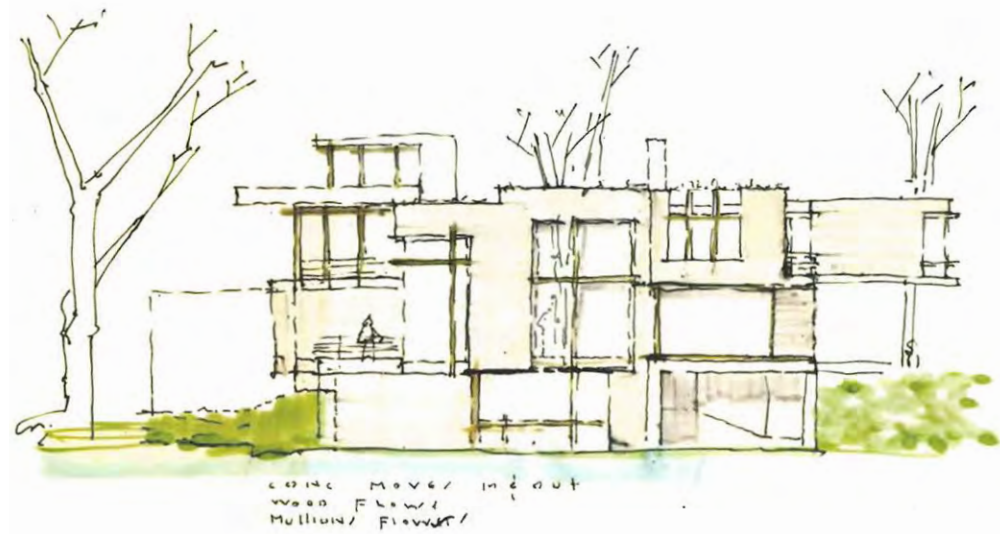
That responsibility included:

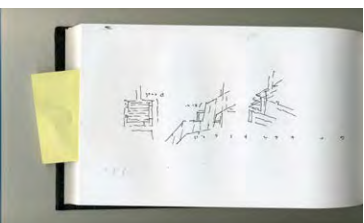
Largely responsible for design.

John DeFazio, AIA

Professional Colleague

STUART NAROFSKY, AIA, LEED AP





The home has become a canvas for the client's continued landscape projects, planting trellis vines, and roof top vegetable gardens. For the client, "the house fits our family perfectly like a Greenfield Clothier custom made suit."

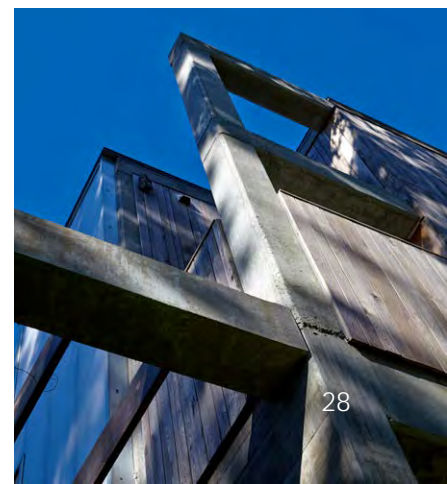
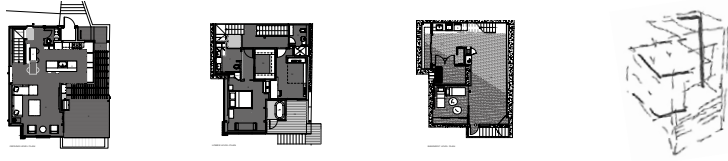




EXHIBIT 5: KERNS RESIDENCE

Port Washington, New York



This modest 1500 sq. ft. residence is built among 40 closely spaced co-op homes, formerly a bungalow colony, on a steep east-facing embankment. Stuart balances respect for the hillside with the need to not compromise privacy, while maximizing dramatic views of the adjacent harbor.

Addressing the challenge of proximity of houses as close as 7 feet, and a strict height limitation, *Stuart designed the house from top down*: he employed an innovative underpinning method to create a deep excavation allowing for 2 floors and a full cellar, without disturbing hillside and adjacent structures. Stuart handpicked reclaimed joists and decking which were integrated as an exposed frame over an open floor plan emphasizing function and views. An open structure for the two main levels of the house gives the impression of higher ceilings than the limitations allowed. The plan configuration erodes a square to give way to private exterior deck spaces, creating multiple entry points through sliding doors, arriving directly to the kitchen and living spaces. The stairs circulate the perimeter to avoid disrupting this open plan. A green roof system minimizes visual disruption to uphill homes. A polycarbonate façade shields neighboring houses while focusing natural light down to basement recreation spaces. Weathering naturally, ipé wood plank is used on a ventilated wall façade. By glazing or leaving interior and exterior spaces open, Stuart offers broad views to the beach and peninsula in the distance, further enhancing the dweller's experience of structure and site.

Architecture Firm of Record & Design Firm

Narofsky Architecture

Completion Date

2011

Role of Nominee

Principal Architect & Designer

Awards

AIA Long Island Archi Award:

Residential, 2011

Publications

Aspire Magazine, 2013

Declaration of Responsibility

I have personal knowledge of the nominee's responsibility for the project listed above.

That responsibility included:

Largely responsible for design.

 Jennifer Rusch

Principal of Ways 2 Design, Partner

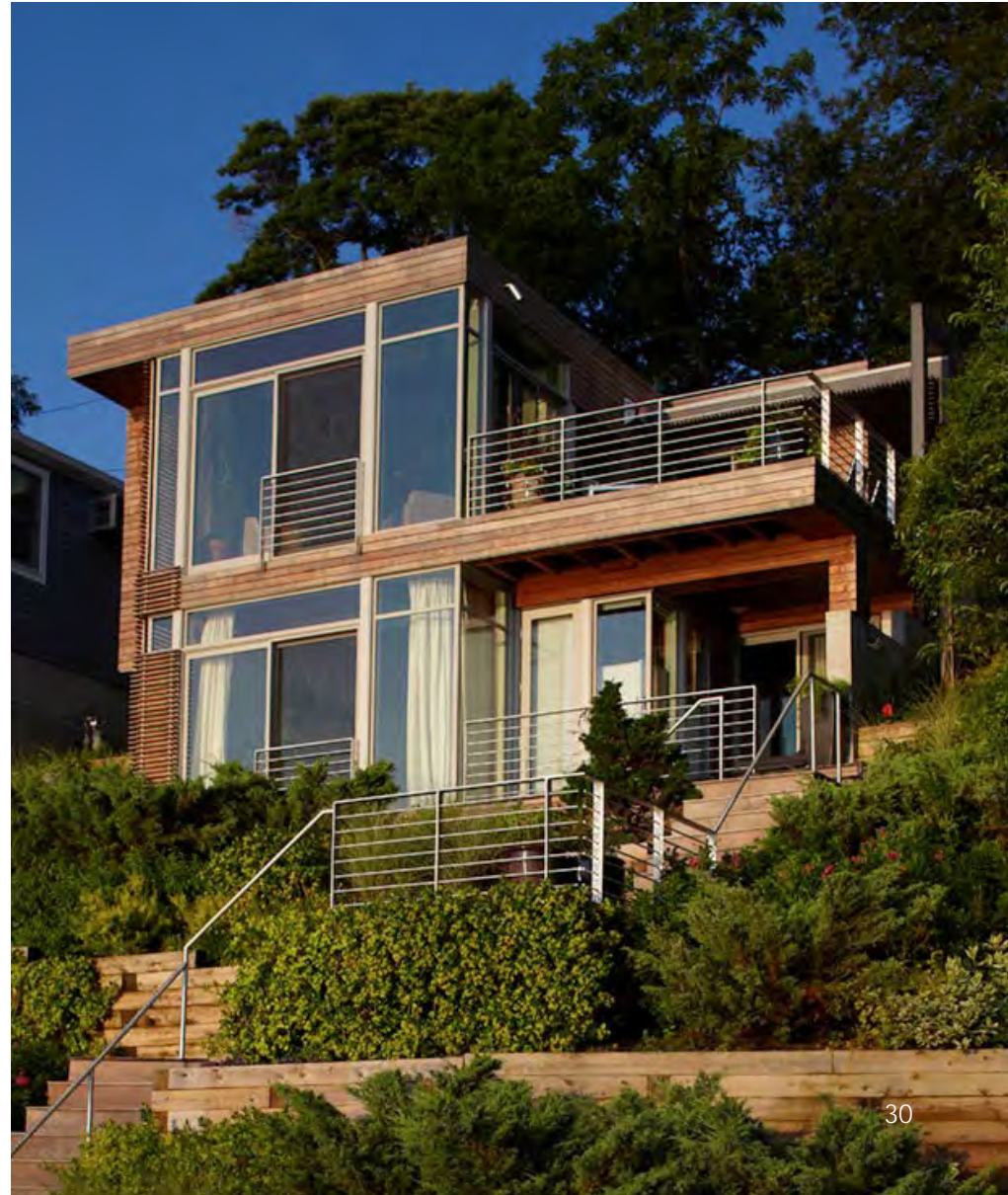




EXHIBIT 6: MUSICIAN'S PENTHOUSE

New York City, New York

"I am simple, just give me a place to sleep, work and play music — and make it all black and dark." Stuart's client for this 3500 square foot renovation and rooftop addition in Manhattan is a single male, an investment counselor by day and bass player at night who also occasionally pilots small planes.

Orchestrating a flow of spaces to translate his client's distinctive lifestyle, Stuart conceived the plan around a large stage area for rehearsals. Behind the stage are private areas for sleeping, bathing, and working as well as the stair that accesses the penthouse. In front of the stage are multiple sitting areas, a bar, media area, and fireplace garden. Areas for eating and entertaining are defined by the intersection of a walkway evoking a runway, lined with landing lights. There were no requirements for guest bedrooms; the kitchen was placed in an alcove behind a large sliding insulated wall, almost never to be used. A 400 square foot penthouse with hot tub and sauna provides access to an urban rooftop garden and quiet non-media space.

Addressing sound transmission and vibration control, Stuart's design concept creates an inventive *structure within a structure*: by employing a rooftop steel structure to support the original wood frame roof, and removing existing center columns and girders, Stuart achieved 36-foot wide column-free space. A soundproof floor, floated above vibration blocks, and inner free-standing perimeter walls, pitched in multiple directions, improve acoustic quality and aid in sound isolation. The reception of light from roof clerestory penetrations and skylights give a sense of comfort, while dark materials absorb the natural daylight to create the desired cave-like atmosphere. Reclaimed wood, concrete, resin panels, Cortecchia slate, cold-rolled steel and zinc establish a textural palette, while a white vestibule welcomes guests as a contrasting transitional area before entering the clubhouse feel of the residence.

Architecture Firm of Record & Design Firm

Narofsky Architecture

Completion Date

2009

Role of Nominee

Principal Architect & Designer

Awards

AIA Long Island Archi Award:

Interior Architecture, 2013

Publications

Aspire Magazine, 2013

Inspiring Interiors-Design Bureau, 2013

Architectural Leaders Today, 2011

Declaration of Responsibility

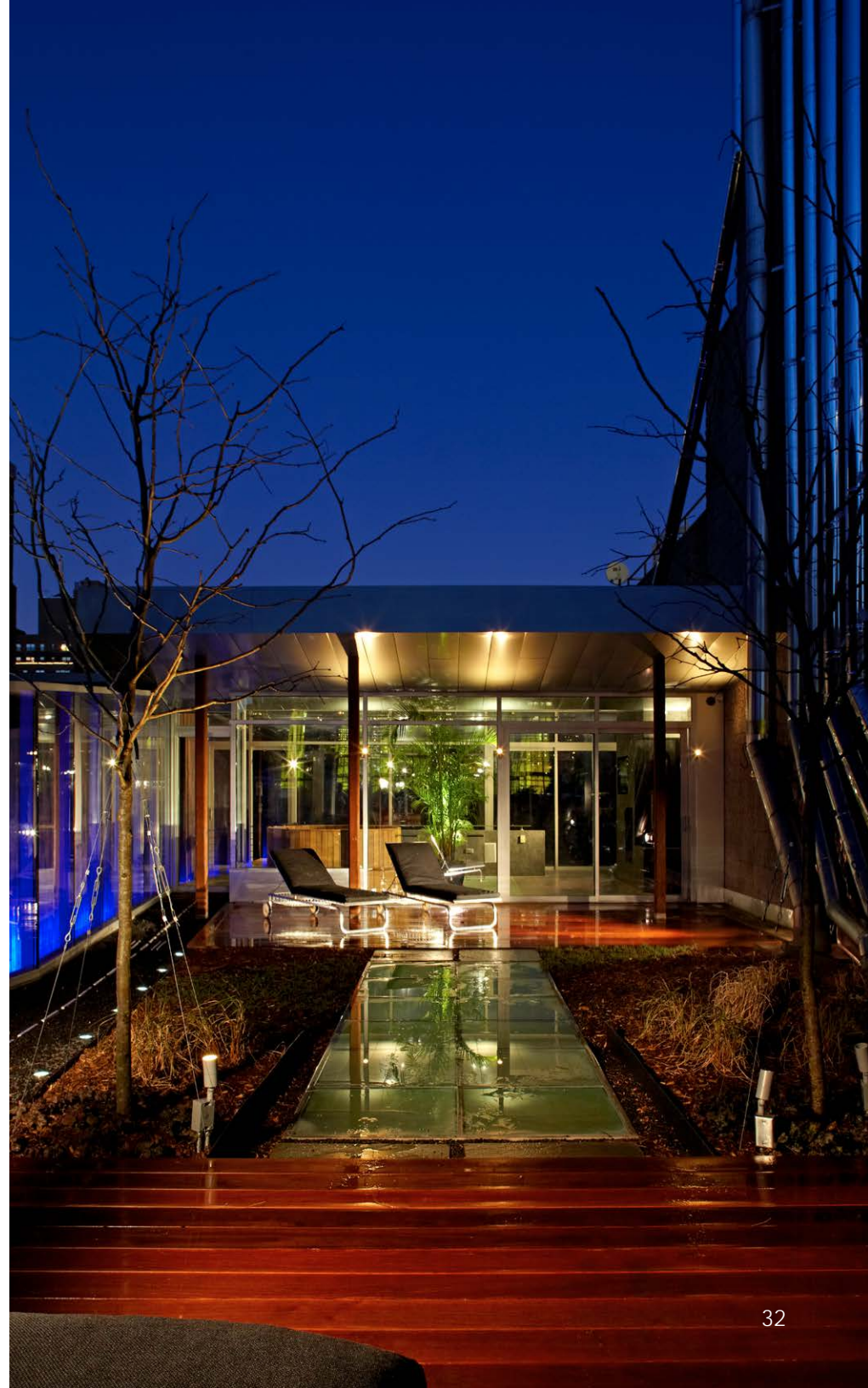
I have personal knowledge of the nominee's responsibility for the project listed above.

That responsibility included:

Largely responsible for design.

Jennifer Rusch

Principal of Ways 2 Design, Partner





Wall Mural by Stuart Narofsky



EXHIBIT 7: DESERT HOUSE

St. David, Arizona



Built on 40 desert acres, 60 miles southeast of Tucson, Arizona, this residence is within the Dragoon Mountains, beneath “Cochise Stronghold,” named after the great Apache chief. The desert now bears witness to a more modern cultural conflict, that of recent residential development. The influx of new homes, most built rapidly and without concern for design, creates a jarring visual incongruity: New England farmhouses disrupt the colors and geometry of the landscape, and Mexican Haciendas invoke a misplaced cultural history.

Stuart’s response to the client’s program for a modest-sized home, guest cottage and stables insightfully considers the natural and constructed qualities of the landscape. The plan frames the Stronghold Monument and orients the compound away from adjacent developments. The arrangement of buildings and jagged roof lines form a secluded enclave with a strong relationship to the mountains. Sensitive to its own environmental impact, the design incorporates passive cooling and sun shading devices to minimize energy use and local materials, such as adobe brick and weathering steel, selected for their sustainable qualities, minimal construction waste, and palette evoking sand and rock formations.

Stuart spent much time on site, and working hand-in-hand with the contractors. He met with local craftsmen to become familiar with indigenous building materials and practices. Stuart had the caretaker room of the stables built first, and, once a month, he slept on the floor to be able to experience the site and the function of the adobe. The result is architecture with a rugged, expressive quality that evidences Stuart’s hand in the details, building craft, and joining of contrasting materials. In a region with a history of discord, this dwelling expresses an integrity and harmony of structure and natural surroundings.

Architecture Firm of Record & Design Firm

Narofsky Architecture

Completion Date

2006

Role of Nominee

Principal Architect & Designer

Exhibitions

AIA New York Now Exhibition, 2005

Declaration of Responsibility

I have personal knowledge of the nominee’s responsibility for the project listed above.

That responsibility included:

Largely responsible for design.

 John DeFazio, AIA

Professional Colleague



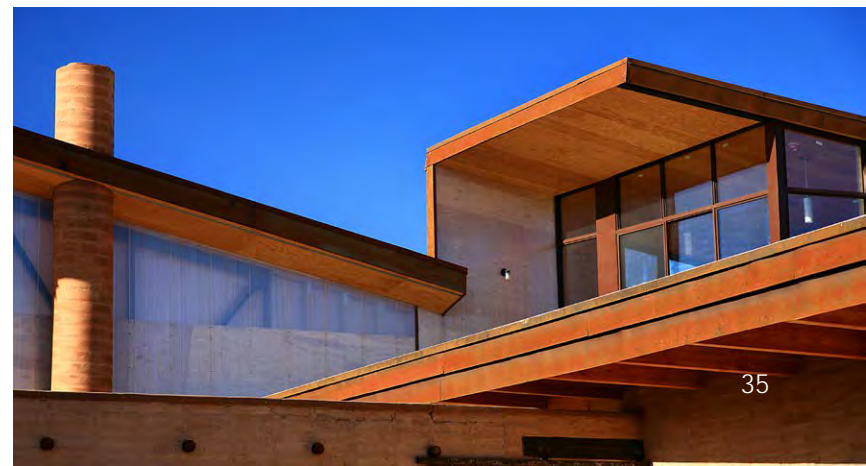


EXHIBIT 8: DOSHI RESIDENCE

Great Neck, New York

This residence occupies a small waterfront site on a Long Island's shore in a community of post-war homes, predominantly ranches purchased for their great land value, and renovated or replaced by "McMansions." The owner wanted to take advantage of the site's views of New York City's bridges and skyline and yet seek privacy from adjacent homes. Local building regulations required a total building height of 25', which, because of the site's steep grade, allowed only a low 16' high roofline at the front yard, prescribing a house that appears to be compressed. Stuart responded directly to site considerations and the client program by revealing lower levels as the land drops away. Together with a perpendicular extension, this organization allows for a very private rear yard.

The program for the empty nesters called for open common areas of kitchen, dining room, living room and three bedroom zones of master suite, owner's father and his caretaker, and three guest suites for visiting children. Spaces progress from private to public toward the waterfront. To provide a low-maintenance residence and consider waterfront wind codes, the house is built with a steel frame and concrete slabs, which also helped minimize cross-section height. The structure is clad with a resin and wood rainscreen system, zinc, clear and translucent high-impact glazing. The common areas are rendered transparent, allowing physical and visual connection between the winding entry garden with custom-designed granite fountain, rear terrace, and bay. The master suite is left translucent while the bedrooms and infrastructure are rendered as solids.

An intimate entry garden surrounds a zinc-clad room, coined the 'Zen room', the only space with no water view, intended for quiet study and contemplation. Unlike typical suburban front doors, this entry is circuitous, signaling the honest and sustainable approach of a dwelling that does not fall prey to the banal and whimsical use of historical precedent all too common in the area.

Architecture Firm of Record & Design Firm

Narofsky Architecture

Completion Date

2005

Role of Nominee

Principal Architect & Designer

Awards

AIA Long Island Archi Award:

Residential & Multi-Family, 2006

Publications

Dream Homes of New York, 2007, Book

Newsday, 2006 / *Distinction Magazine*, 2006

STUART NAROFSKY, AIA, LEED AP

Declaration of Responsibility

I have personal knowledge of the nominee's responsibility for the project listed above.

That responsibility included:

Largely responsible for design.

John DeFazio, AIA

Professional Colleague



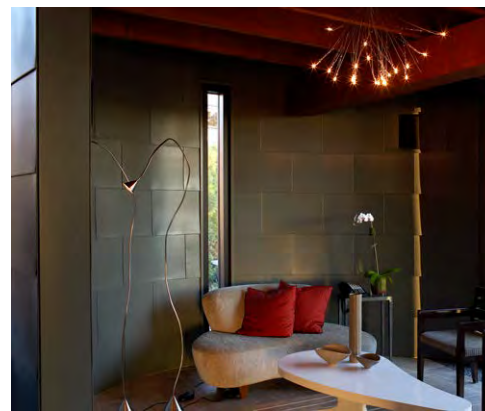


EXHIBIT 9: PATEL RESIDENCE

Old Westbury, New York

Two physicians previously from India requested a modern home for their family that would define the nondescript landscape and create privacy from the adjacent street, while graciously accommodating both interior and exterior spaces for entertaining and large parties.

Creating a new environment on the site, Stuart designed a bold sculptural composition of forms and volumes, outdoor spaces and varied landscaped contours. The house is configured around a private indoor and outdoor courtyard, shaded and weather-protected by a rolling awning for use in outdoor entertainment. In the rear, a lowered court exposes the basement for access and light. Excavated earth was used to raise the grade in the front to minimize the structure's impact to the street. Predominant on the exterior, a "dissected" drum-like shape encloses the living room and master bedroom. Flanking the solidity of the drum, a tower clad in Kalwall encloses and separates stairs from the living spaces at the client's request, its contrasting translucency and height also serving to designate and illuminate the home's entry.

Intuitively carving the program in abstract forms, Stuart nevertheless sought to draw from the clients' cultural heritage to incorporate an inspired palette of materials and artistic features. Red sandstone imported from the client's hometown in India, and mahogany for trim and cabinetry, evoking the clients' memory of a childhood experience in Kenya, balance the minimal spatial configurations. A prayer room is discretely placed behind a mahogany wall panel off from the living room. The façade of a wedge-shaped fireplace wall has 72 cast aluminum panels designed and fabricated by artist Tom Penn, who took Stuart's lead in rendering a modern interpretation of Indian carved doors.

"Our house is your house" is the warm greeting Stuart receives from the client in what has become a close collaboration and lasting friendship with the family over the years, and as he guides the owners as their trusted design advisor in the continual care of their home.

Architecture Firm of Record & Design Firm

Narofsky Architecture

Completion Date

2005

Role of Nominee

Principal Architect & Designer

Awards

AIA New York State: Excellence in Design, 1995

AIA Long Island Archi Award: Residential & Best of the Best 1995

Society of American Registered Architects: Excellence in Design, 1995

Publications

Residential Architect Magazine, 2000 / *Inside Outside Magazine*, 1997 / *Distinction Magazine* 1996 / *New York Times*, 1995 / *Newsday* 1996

STUART NAROFSKY, AIA, LEED AP

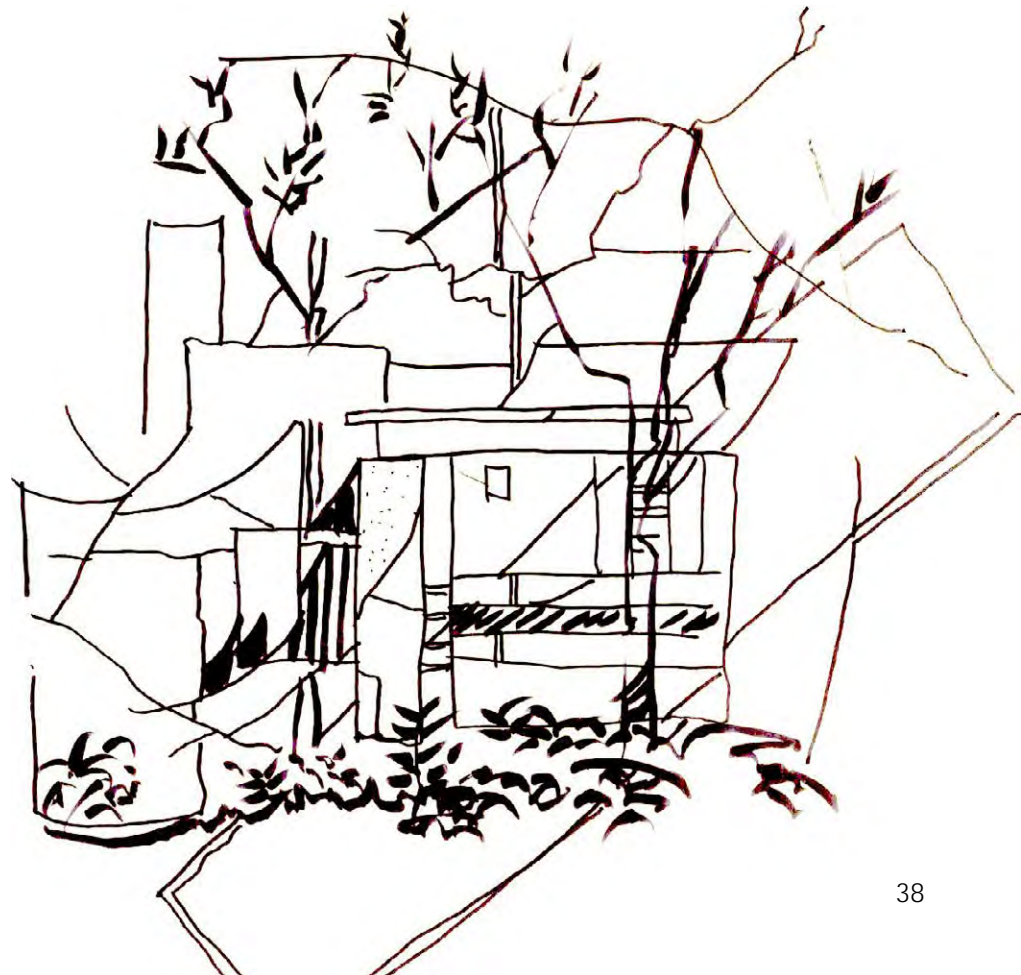
Declaration of Responsibility

I have personal knowledge of the nominee's responsibility for the project listed above.

That responsibility included:

Largely responsible for design.

John DeFazio, AIA
Professional Colleague





1 **Douglas P. Casper, AIA**

President and Founder
DPC Continuing Education, Inc.

Plainview, NY 11803
Telephone:

Professional Relationship to Nominee: Professional Colleague,
Continuing Education Provider, Past President, AIA Long Island

2 **John DeFazio, AIA**

Sunnyside, NY 11104
Telephone:

Professional Relationship to Nominee: Professional Colleague,
Author

3 **M. Sc. Arq. Gastón A. Gallardo Dávila**

Decano
Facultad de Arquitectura, Artes, Diseño y Urbanismo, FAADU
Universidad Mayor de San Andrés, UMSA
Casilla de correo 2283, La Paz, Bolivia
Telephone:

Professional Relationship to Nominee: Professional Colleague, Dean
of Facultad de Arquitectura, Artes, Diseño y Urbanismo, FAADU and
Universidad Mayor de San Andrés, UMSA

4 **Kevin Harris, FAIA**

Kevin Harris, Architect, L.L.C.
451 E. Airport, Suite A
Baton Rouge, LA 70806
Telephone:

Professional Relationship to Nominee: Professional Colleague,
Member AIA CRAN (Custom Residential Architects Network)

5 **Mark A. Hutker, FAIA**

Principal
Hutker Architects Inc.
217 Clinton Avenue
Falmouth, MA 02540-3810
Telephone:

Professional Relationship to Nominee: Professional Colleague,
Member AIA CRAN (Custom Residential Architects Network)

6 **Michael H. Spector, FAIA**

Principal
Spector Group
220 Crossways Park West
Woodbury, NY 11797
Telephone:

Professional Relationship to Nominee: Professional Colleague

7 **James A. Wabridge, AIA**

President
Tekton Architecture
771 Clementina Street
San Francisco, CA 94103
Telephone:

Professional Relationship to Nominee: Professional Colleague,
Member AIA CRAN (Custom Residential Architects Network), Co-
Presenter at AIA National Convention and AIA CRAN (Custom
Residential Architects Network)