



**2015 AIA Fellowship**

Entry 59243

Nominee      John R. Bowie  
Organization      John Bowie Associates  
Location      Wallingford, Pennsylvania  
Chapter      AIA Philadelphia

Sponsor      John A. Burns FAIA  
Organization      National Parks Services

Category of Nomination

Category One - Preservation

Summary Statement

John Bowie has advanced the field of preservation through his nationally-recognized achievements in recording, restoring and interpreting historic sites and museums, and through outstanding client collaboration on sustainable resource stewardship and best management practices.

Education

St. Charles Borromeo Seminary, Wynnewood, PA, entered August 2011, expected date of Ordination into Diaconate of the Catholic Archdiocese of Philadelphia and receipt of Masters of Sacred Theology - May 2017 (6 years total).

University of Maryland School of Architecture, College Park MD, entered August 1974, received Bachelor of Architecture December 1979 (5.5 years total).

Licensed in: NJ (first state), PA, DE, MD, NY, IN, Washington DC, NCARB

Employment

John Bowie Associates, Historical Architects; Wallingford, PA; April 1986 to present.

Vitetta Group/Studio Four Restoration Architects; Philadelphia, PA; October 1983 to April 1986.

John M. Dickey, F.A.I.A.; Media, PA; February 1981 to October 1983.

Historic American Buildings Survey / Historic American Engineering Record; Washington, DC; December 1979 to February 1981.

Historic American Buildings Survey / Historic American Engineering Record; Manton, CA; June 1979 to September 1979

Historic American Buildings Survey / Historic American Engineering Record; Tahawus, NY; June 1978 to September 1978

# Institute Honors and Awards Fellowship



THE AMERICAN  
INSTITUTE  
OF ARCHITECTS

## Nomination Signature Sheet

John R. Bowie, AIA

Candidate's Name

### Component Nomination

Name of component organization

AIA Philadelphia

Signature of chapter president or secretary

Name of chapter president or secretary

Antonio Fiol-Silva, FAIA, President

or

### Nominated by any 10 AIA Members *or* any 5 Fellows in good standing:

1. Signature/date

Print/Type full name/chapter

2. Signature/date

Print/Type full name/chapter

3. Signature/date

Print/Type full name/chapter

4. Signature/date

Print/Type full name/chapter

5. Signature/date

Print/Type full name/chapter

6. Signature/date

Print/Type full name/chapter

7. Signature/date

Print/Type full name/chapter

8. Signature/date

Print/Type full name/chapter

9. Signature/date

Print/Type full name/chapter

10. Signature/date

Print/Type full name/chapter

**Note: It is the responsibility of the sponsor to notify the AIA component of a petition nomination.**



# United States Department of the Interior

NATIONAL PARK SERVICE  
1849 C Street, N.W.  
Washington, D.C. 20240



October 10, 2014

Mr. John Castellana, FAIA, Chair  
2015 Jury of Fellows  
The American Institute of Architects

Dear Jury of Fellows:

John R. Bowie, AIA, is an historical architect who has produced an extraordinary body of work in a highly specialized practice that falls outside the mainstream. Existing buildings represent over half of current construction, but these projects are mostly unheralded by the profession. John's practice, focused exclusively on historic museums and landmark buildings, exhibits the highest standards of preservation practice, as exhibited by the numerous awards he has received from a variety of organizations, many of which are from outside the architecture community. It is an honor and a privilege to bring this remarkable architect's talents and accomplishments to your attention and to sponsor John for elevation to Fellowship in the American Institute of Architects.

John and I first worked together over thirty years ago in the Historic American Buildings Survey/Historic American Engineering Record programs of the National Park Service, which document, in measured drawings, historic architecture and engineering throughout the United States for a publically-accessible archive in the Library of Congress. John's inquisitive mind and sharp eye allows him to unravel the mysteries and ambiguities characteristic of historic buildings—and, his delineation skills are unmatched. Pursuing his career in the private sector, John continues to produce drawings for HABS/HAER, thereby sharing his analysis and interpretation of how things fit together and work with a broad audience beyond architects, including scholars, school teachers, and the general public.

Key to the success of his preservation practice, John's ability to read and interpret historic sites, and his passion for understanding their salient features, set him apart from other historical architects. Nowhere is this more evident than his work with historic industrial sites, where the workflow, power sources, and machinery, define the functional form of these deceptively modest but complex buildings. He brings alive and gives voice to these silent sentinels of our industrial heritage. His clients, often small organizations with limited resources, benefit from his ability to plan restoration work that can be operated and maintained with minimal intervention over time—thus sustainable and resilient—making his projects benchmarks for other architects to emulate.

John has worked on a broad range of structures, from small grist mills, to big-city train stations, to the remnant foundations of the World Trade Center. His career has quietly advanced under the radar of the profession, but nevertheless he is widely known and respected for his dedication to the buildings entrusted to his care, his meticulous attention to detail, and the quality of his finished projects.

For all of these reasons, I firmly believe that John represents the highest ideals of the profession and proudly recommend him for elevation to Fellowship.

Sincerely,

John A. Burns, FAIA, FAPT  
Chief Appeals Officer, Federal Preservation Tax Incentive Program



## SECTION 1 SUMMARY OF ACHIEVEMENTS

### 1.0 Summary Statement

---

*John Bowie has advanced the field of preservation through his nationally-recognized achievements in recording, restoring and interpreting historic sites and museums, and through outstanding client collaboration on sustainable resource stewardship and best management practices.*

#### Recordation

John's career in historic preservation started while he was in college, as a student architect for the Historic American Buildings Survey/Historic American Engineering Record (HABS/HAER) documenting the Adirondack Iron & Steel Company's ruins in Upstate New York (summer 1978), and the Battle Creek Hydroelectric System in rural Northern California (summer 1979). During these assignments, he developed the use of field sketching, physical measurement and interpretive delineation to accurately record both the accumulated architectural expression and the essential industrial processes that dictated those built forms. This indispensable foundation in authenticity holistically shaped John's approach to preservation as practice. It also launched a diverse, career-long sequence of contributions to the permanent public record of American culture through HABS/HAER. **John's interpretive drawings and architectural recordation expand and enhance the public's understanding of our cultural heritage by illustrating the inseparability of architecture and technology in early industrial buildings and sites.**

#### Restoration

John's groundwork in recording our national industrial legacy led him to restoration projects at historic sites and museums, especially industrial sites focusing on the preservation of their resources for public visitation. Working with unusual built objects, John's practice expanded to include projects involving historic building technology and archaic construction techniques across the nation. This included many rare and forgotten buildings, often in states of advanced deterioration, which contained significant objects, machines, and collections warranting preservation and interpretation to both local and national audiences. It also presented restoration scenarios that included service to a wide range of clients, from marginally-funded nonprofit organizations to state and federal agencies and other design professionals. **John's constancy as advocate for the cultural resource has been the core of his unique practice.**

#### Interpretation

Building upon his documentation and restoration work, John's project scopes expanded to enhancement of the visitor's learning experience through architecturally supported interpretation. His wide-ranging services, in support of interpretive goals, include: 1) the illustration of industrial processes within their architectural context; 2) instruction on obscure construction techniques specific to historic resources; and 3) architectural treatment of the resource to focus and manage the visitor sequence. **John's effective interpretive treatment of public sites sustains them by broadening their audiences.**

#### Stewardship

**Through exemplary, comprehensive preservation services, John has advanced the stewardship of cultural resources.** Throughout the project effort, John collaborates with his clients to define and implement the long-term responsibilities they have for their resources, whether they are large public landmarks with high levels of visitation, or locally-significant, modest historic sites. His practice has developed to include client counsel on complex projects impacting cultural resources where advocacy of the resource must be tempered over multi-decade schedules and diverse project participants and users.

## SECTION 2 ACCOMPLISHMENTS

### 2.1 Significant Work: Completed Preservation Projects

*Note: projects listed in Section 3 exhibits are not noted in Section 2*

**NR** - Listed on or Eligible for the National Register of Historic Places

**NHL** - National Historic Landmark



NR

#### **PRR ENGINE #460 - THE LINDBERGH LOCOMOTIVE**

Strasburg, PA - 2011 • 2014

Railroad Museum of Pennsylvania; Exhibit design for stationary operation of the historic steam locomotive's drive wheels, connecting rods, valves and pistons for visitor interpretation in a museum setting.

Project Manager and Lead Preservation Architect / John Bowie Associates

*Interpretation*



NR

#### **HISTORIC INTERLOCKING TOWERS & RAIL OPERATING STRUCTURES**

Strasburg, PA • 2007-2014

Amtrak; Condition assessment, comprehensive historic resource treatment planning (interlocking towers, coaling towers and sanding towers, 45 total), along Northeast Corridor, Keystone Corridor, IN and LA.

Project Manager and Lead Preservation Architect / John Bowie Associates

*Preservation*



NR

#### **BUILDING AT LOCK 31, DELAWARE & HUDSON CANAL**

Hawley vicinity, PA • 2012-2013

Wayne County Historical Society; Heavy timber structural stabilization, foundation reconstruction, masonry repairs, exterior restoration, electrical upgrades and alarm installation.

Project Manager and Lead Preservation Architect / John Bowie Associates

*Restoration*



NR

#### **WORLD TRADE CENTER**

New York, NY • 2005-2012

Port Authority of New York & New Jersey; Resource Protection Plan and construction observation of work in contact with column remnants, slurry walls, E Subway finishes, Survivor Stair and Steel in the Shape of a Cross.

Team Preservation Architect / AKRF Inc., New York, NY

*Preservation*



NR

#### **WARDEN'S HOUSE**

Mount Holly, NJ • 2011

Burlington County Department of Parks & Recreation; Exterior restoration and interior rehabilitation of historic building as part of the Burlington County Prison Museum.

Team Preservation Architect / RYEBread Architects, Mount Holly, NJ

*2011 Preservation Alliance for Greater Philadelphia Grand Jury Award*

*2011 New Jersey State Historic Preservation Award*

*Restoration*

## SECTION 2 ACCOMPLISHMENTS

### 2.1 Significant Work: Completed Preservation Projects

*Note: projects listed in Section 3 exhibits are not noted in Section 2*



NHL

#### AMSTEL HOUSE AND OLD DUTCH HOUSE

New Castle, DE • 2010-2011

New Castle Historical Society; Exterior restoration, site drainage, interior HVAC and electrical and lighting improvements and accessibility upgrades to historic house museums.

Project Manager and Lead Preservation Architect / John Bowie Associates

Restoration



NHL

#### THE MILL AT PHILIPSBURG MANOR

Tarrytown, NY • 2005-2006

Historic Hudson Valley; Reconstruction of the wooden undershot water wheel, and preservation repairs to heavy timber forebay, flume, main gate and main shaft.

Project Manager and Lead Preservation Architect / John Bowie Associates

Preservation



#### GEORGE CATLIN HOUSE

Scranton, PA • 2001 and 2006

Lackawanna Historical Society; Complete exterior restoration of Ludowici tile roofs, half-timber walls, decorative wood windows and doors, stained glass window at stairway and ornamental stucco finishes.

Project Manager and Lead Preservation Architect / John Bowie Associates

Restoration



NHL

#### THE ATHENAEUM OF PHILADELPHIA

Philadelphia, PA • 2006

Trustees of the Athenaeum of Philadelphia; Accessibility upgrades in the Garden and first floor public and office spaces, including dedicated parking, entrance walks, doors and restrooms.

Project Manager and Lead Preservation Architect / John Bowie Associates

Accessibility



NR

#### MEDIA ARMORY

Media, PA • 2003-2004

Borough of Media; Exterior and interior rehabilitation of former armory building to serve as museum on lower floor and commercial grocery (Trader Joe's) on upper floor.

Team Preservation Architect / Linn Architects, Media, PA

2005 PA Historical & Museum Commission Outstanding Preservation Project Award

2005 Certificate of Appreciation by the Delaware County Heritage Commission

Preservation

## SECTION 2 ACCOMPLISHMENTS

### 2.1 Significant Work: Completed Preservation Projects

*Note: projects listed in Section 3 exhibits are not noted in Section 2*



NHL

#### **PAULSDALE**

Mount Laurel, NJ • 2000-2004

Alice Paul Institute; Exterior restoration and interior rehabilitation of c.1800 farmhouse to 1885 period of interpretation, including reconstruction of full-wrapping porch.

Principal-in-Charge / John Bowie Associates

[2005 American Association for State and Local History Award of Merit](#)

[2005 New Jersey State Historic Preservation Award](#)

Restoration



NR

#### **GREENHOUSE AT THE HIGHLANDS GARDENS**

Fort Washington, PA • 2002-2003

Highlands Historical Society; Exterior and interior restoration of c.1920 Lord & Burnham Greenhouse and adjacent potting shed as interpretive station within estate period garden, included reproduction of framing components and period glazing.

Principal-in-Charge / John Bowie Associates

Restoration



NR

#### **TURNTABLE RESTORATION AND YARD RECONSTRUCTION**

Strasburg, PA • 1999-2001

Railroad Museum of Pennsylvania; Restoration of operating 100' turntable, reconfiguration and reconstruction of the yard tracks and switches to accommodate a greater quantity of rolling stock.

Project Manager and Lead Preservation Architect / John Bowie Associates

Restoration



NHL

#### **EPHRATA CLOISTER**

Ephrata, PA • 1998-2000

Pennsylvania Historical and Museum Commission; Restoration of the hand-riven white oak siding on eleven 18th century interpreted historic museum buildings.

Project Manager and Lead Preservation Architect / John Bowie Associates

[2000 Associated Builders and Contractors Award of Excellence](#)

Restoration



NR

#### **WILLIAM J. NEALON FEDERAL COURTHOUSE AND POST OFFICE**

Scranton, PA • 1999

U.S. General Services Administration; Exterior restoration and masonry cleaning, and link between new building and historic old building.

Team Preservation Architect / Bohlin Cywinski Jackson, Wilkes-Barre, PA

[2000 U.S. General Services Administration Outstanding Preservation Project Award](#)

Restoration



## SECTION 2 ACCOMPLISHMENTS

### 2.1 Significant Work: Completed Preservation Projects

*Note: projects listed in Section 3 exhibits are not noted in Section 2*



Restoration

NHL

#### **WILSON-WARNER HOUSE AND CORBIT-SHARP HOUSE**

Odessa, DE • 1993-1997

Henry Francis duPont Winterthur Museum's Historic Houses of Odessa; Exterior restorations, and structural, HVAC, electrical and lighting upgrades on interiors.

Project Manager and Lead Preservation Architect / John Bowie Associates



Preservation

NR

#### **FEDERAL OFFICES AT STEGMAIER BUILDING**

Wilkes-Barre, PA • 1995-1997

U.S. Postal Service; Exterior and interior rehabilitation of abandoned seven-story brewery complex in downtown Wilkes-Barre to become federal offices.

Team Preservation Architect / Bohlin Cywinski Jackson, Wilkes-Barre, PA

[1998 Preservation Pennsylvania Initiative Award for Public/Private Partnership](#)



Preservation

NR

#### **12 HISTORIC BORDER CROSSINGS BETWEEN VERMONT & QUEBEC**

Across Vermont • 1995

U.S. General Services Administration and U.S. Customs Service; Comprehensive historic preservation plan for all 12 border stations at rural locations (not interstate highways), constructed in the 1920s and 30s.

Team Preservation Architect / Louis Berger & Associates, East Orange, NJ



Restoration

NHL

#### **ADDISON & SEARIGHT'S TOLL HOUSES**

Addison & Uniontown, PA • 1996-1997

Pennsylvania Historical & Museum Commission; Exterior and interior restoration and site upgrades, including parking and rest rooms, of small, octagonal toll houses constructed in 1830s along the National Road (U.S. Route 40).

Project Manager and Lead Preservation Architect / John Bowie Associates

[1998 PA Historical & Museum Commission Outstanding Restoration Project Award](#)



Interpretation

NR

#### **WATER WHEELS AT LONG POND IRON WORKS STATE PARK**

Greenwood Lake vicinity, NJ • 1992-1995

State of New Jersey, Division of Parks & Forestry; Conservation and reconstruction of two 25' diameter wooden undershot water wheels, hubs, shafts and bearings as an interpretive exhibit in remote, heavily reforested setting (former iron furnace site).

Project Manager and Lead Preservation Architect / John Bowie Associates



## SECTION 2 ACCOMPLISHMENTS

### 2.1 Significant Work: Completed Preservation Projects

*Note: projects listed in Section 3 exhibits are not noted in Section 2*



Interpretation

#### KEYSTONE FOUNDRY

Hopewell (Bedford County), PA • 1994

Hopewell Area Seniors Center and America's Industrial Heritage Project; Inventory and appraisal of museum-related objects, machines and artifacts; architectural evaluation of the buildings; training seniors on collection care procedures.

Project Manager and Lead Preservation Architect / John Bowie Associates

[1995 Preservation Pennsylvania Initiative Award for Historic Property Stewardship](#)



Restoration

NR

#### WORTENDYKE BARN

Park Ridge, NJ • 1992-1993

Bergen County Department of Parks & Recreation; Interior and exterior restoration of surviving 18th century Dutch barn, including restoration of heavy-timber framing, siding repairs and electrical upgrades.

Project Manager and Lead Preservation Architect / John Bowie Associates

[1994 Office of New Jersey Heritage Outstanding Restoration Project Award](#)



Restoration

#### REGINA HALL (LIBERAL ARTS BUILDING)

Dunmore, PA • 1991

Trustees of Marywood College (now University); Restoration of the dome, including complete repair/replacement of the original c.1915 lightweight concrete shell and copper batten-seam exterior dome cladding, cupola and gilded cross.

Team Preservation Architect / Leung Hemmler Camayd Architects, Scranton, PA

[1994 International Concrete Repair Institute Award of Excellence](#)

[1992 PA Historical & Museum Commission Outstanding Restoration Project Award](#)



Preservation

NR

#### PENNSYLVANIA'S EXTANT 221 HISTORIC COVERED BRIDGES

Across the state • 1990-1991

PA Department of Transportation; survey, prepare comprehensive preservation plan and develop ranking system for PA DOT's implementation of statewide covered bridge repair and upgrade program.

Team Preservation Architect / Ortega Consulting, Media, PA

[1992 PA Historical & Museum Commission Outstanding Special Project Award](#)



Restoration

NHL

#### MILL AT ANSELMA

Chester Springs vicinity, PA • 1986-1990

French & Pickering Creeks Conservation Trust; Exterior and interior restoration of the mill building, restoration of the mill pond, head race, overflow, head gate, water wheel, main shaft, countershafts, stones, elevators, and belt-driven machinery.

Project Manager and Lead Preservation Architect / John Bowie Associates

## SECTION 2 ACCOMPLISHMENTS

### 2.1 Significant Work: Resource Recordation *HABS/HAER level drawings*

---

2012-2014	<b>Aughwick Creek Concrete Bridge</b> ( <i>ongoing documentation</i> ) Mount Union vicinity, PA • Friends of the East Broad Top RR
2012-2014	<b>Pogue Trestle</b> ( <i>ongoing documentation</i> ) Orbisonia vicinity, PA • Friends of the East Broad Top RR
2009	<b>Coles Water Tank</b> Orbisonia vicinity, PA • Friends of the East Broad Top RR
2004	<b>Saltillo Station</b> Saltillo, PA • Friends of the East Broad Top RR
1998	<b>Bahr's Grist Mill</b> Gabelsville, PA • Ressler Mill Foundation
1998	<b>Mascot Roller Mills</b> Ronks, PA • Ressler Mill Foundation
1998	<b>New Milford Water Pumping Station</b> Oradell, NJ • Bergen County Department of Parks & Recreation
1996	<b>Walnut Street Bridge</b> Harrisburg, PA • Pennsylvania Department of Transportation
1996	<b>Claus Rittenhouse Home and Outbuildings</b> Philadelphia (Fairmount Park), PA • Historic Rittenhousetown, Inc.
1993	<b>Tredegar Iron Works</b> Richmond, VA • Valentine Museum
1993	<b>U.S. Appraisers Stores</b> Baltimore, MD • U.S. General Services Administration
1993	<b>John Grass Wood Turning Company</b> Philadelphia, PA • The Wood Turning Center Museum
1992	<b>The Saw Mill at Double Trouble State Park</b> Toms River vicinity, NJ • State of New Jersey, Department of Parks & Forestry
1991	<b>Edgewood Plantation</b> Clover, VA • Old Dominion Electric Cooperative
1991	<b>Chaille Block Stores</b> Miami, FL • U.S. Federal Bureau of Prisons
1991	<b>Matthias Harmon House</b> Glen Burnie vicinity, MD • Maryland Department of Transportation
1990	<b>Fort Hill Plantation</b> Clover, VA • Old Dominion Electric Cooperative
1990	<b>The Highlands Mansion and Estate Structures</b> Fort Washington, PA • The Highlands Historical Society
1989	<b>Hopper-Van Riper Grist Mill</b> Paramus, NJ • Bergen County Department of Parks & Recreation

---

## SECTION 2 ACCOMPLISHMENTS

### 2.1 Significant Work: Resource Recordation *HABS/HAER level drawings*

- 
- |      |  |
|------|--|
| 1989 | <b>Housing Units at Fort Buchanan</b><br>San Juan, PR • U.S. Federal Bureau of Prisons and PR Historic Preservation Office                       |
| 1989 | <b>Delaware &amp; Raritan Canal Lift Lock 6-A</b><br>Trenton, NJ • New Jersey Department of Transportation                                       |
| 1989 | <b>Nassawango Iron Furnace</b><br>Snow Hill vicinity, MD • Furnaceton, Inc.  |
| 1988 | <b>Submarine Escape Training Tank</b><br>New London, CT • U.S. Naval Facilities Engineering Command  |
| 1988 | <b>Alpina and Lewisburg Iron Furnaces</b><br>Watertown vicinity (Fort Drum), NY • U.S. Army Environmental Services                               |
| 1988 | <b>Telegram Building</b><br>Harrisburg, PA • City of Harrisburg  |
| 1988 | <b>Woods Grist Mill</b><br>Watertown vicinity (Fort Drum), NY • U.S. Army Environmental Services   |
| 1987 | <b>John A. Roebling's Sons Co./American Steel &amp; Wire Company</b><br>Trenton, NJ • For the Historic American Engineering Record               |
| 1987 | <b>Mill at Anselma</b><br>Chester Springs, PA • French & Pickering Creeks Conservation Trust   |
| 1987 | <b>6 historic bridges across NY State</b> (special consultant to the HAER team)<br>Across New York • New York State Department of Transportation |
| 1987 | <b>Mount Pleasant Grist Mill</b><br>Saint Peters vicinity, PA • Mount Pleasant Mills Foundation  |
| 1986 | <b>Zanja No. 3</b> (part of the original city water distribution system)<br>Los Angeles, CA • U.S. Federal Bureau of Prisons                     |
| 1986 | <b>Kay Moor Coal Mine</b> (special consultant to the HAER team)<br>New River Gorge, WV • HABS/HAER and NPS New River Gorge National River        |
| 1984 | <b>DL&amp;W RR Grain Trestle</b><br>Jersey City, NJ • City of Jersey City  |
| 1984 | <b>Dorrance Colliery</b><br>Wilkes-Barre, PA • Wyoming Historical & Geological Society   |
| 1983 | <b>Betz's Grist Mill</b><br>Lynnville vicinity, PA • Ressler Mill Foundation   |
| 1980 | <b>Hydroelectric Plants at Dams 4 &amp; 5 and Lake Lynn</b><br>Potomac River and Cheat River, WV • As an intern architect with HABS/HAER         |
| 1979 | <b>Battle Creek Hydroelectric System</b><br>Red Bluff vicinity, CA • As a student architect with HABS/HAER                                       |
| 1978 | <b>Adirondack Iron &amp; Steel Company</b><br>Tahawus, NY • As a student architect with HABS/HAER  |
-

## SECTION 2 ACCOMPLISHMENTS

### 2.1 Significant Work: Historic Structures Reports

---

- 2005 Building at Lock 31 of the Delaware & Hudson Canal**  
Hawley vicinity • Wayne County Historical Society  
*Led to the building's stabilization and exterior restoration and the creation of the Delaware & Hudson Canal Greenway, Lock 31 Park.*
- 2003 David Wills House**  
Gettysburg, PA • National Park Service, Gettysburg National Military Park  
*In collaboration with ICON architecture, inc., (Boston, MA); led to restoration and rehabilitation of the building as interpreted historical museum.*
- 2001 Hummelbaugh House**  
Gettysburg, PA • National Park Service, Gettysburg National Military Park  
*In collaboration with ICON architecture, inc., (Boston, MA); led to various National Park Service interior restoration projects.*
- 2001 Eisenhower Barn**  
Gettysburg, PA • National Park Service, Gettysburg National Military Park  
*In collaboration with ICON architecture, inc., (Boston, MA); led to various National Park Service exterior restoration projects.*
- 1999 Demuth Snuff Mill & Cigar Factory**  
Lancaster, PA • Demuth Foundation  
*Led to a stabilization plan for the building and interpretive planning within the Demuth Museum--preserving the art of Charles Demuth, pioneering leader of the American Modernist movement.*
- 1999 Paulsdale, National Historic Landmark**  
Mt. Laurel, NJ • Alice Paul Centennial Foundation  
*Led to exterior restoration and interior rehabilitation for public interpretation of the farmhouse--birthplace of Alice Paul, American suffragist and author of the Equal Rights Amendment (1923).*
- 1999 The Highlands Greenhouse**  
Fort Washington, PA • The Highlands Historical Society  
*Led to exterior and interior restoration of c.1920 greenhouse and attached potting shed within estate garden, enhancing public interpretation of estate life and period utilitarian architecture.*
- 1999 The Highlands Ice House**  
Fort Washington, PA • The Highlands Historical Society  
*Led to exterior restoration and public interpretation of original 1802 estate ice house concurrent with its subsequent period of use (c.1920) to support domestic water service within the mansion.*
- 1998 New Milford Plant of the Hackensack Water Company**  
Oradell, NJ • Bergen County Department of Parks & Recreation  
*Led to National Register listing (2001) and further plans to adaptively reuse and interpret the site relative to its role in the development of modern water purification and pumping technology.*



## SECTION 2 ACCOMPLISHMENTS

### 2.1 Significant Work: Historic Structures Reports

---

- 1995 Ben Schroeder Saddletree Factory Complex**  
Madison, IN • Historic Madison Foundation, Inc.  
*In collaboration with RATIO Architects (Indianapolis, IN); led to the restoration of the buildings as an operating industrial museum.*
- 1995 Lackawanna Silk Mill (Steamtown National Historic Site)**  
Scranton, PA • Lackawanna Heritage Valley Authority  
*In collaboration with Leung Hemmler Camayd (Scranton, PA); led to the exterior restoration and interior rehabilitation of the mill as a trolley museum and visitors center.*
- 1992 The Highlands Barn & Gardener's Cottage**  
Fort Washington, PA • The Highlands Historical Society  
*Led to exterior restorations and interior rehabilitations of three-story stone barn (c.1800) and cottage (c.1844) for public interpretation of 19th-century estate life.*
- 1991 Taylor-Evans House**  
Springfield (Delaware County), PA • Township of Springfield  
*Led to exterior restorations and interior rehabilitations of attached, late-18th century homestead and mid-19th century farmhouse within township-administered public open space.*
- 1991 Chesapeake & Ohio Canal Culvert 235**  
Cumberland vicinity, MD • U.S. Federal Bureau of Prisons and National Park Service  
*Investigated reuse of historic canal culvert (within the C & O Canal National Historical Park) for storm water management of an adjacent (proposed) correctional facility site.*
- 1990 The Highlands Mansion**  
Fort Washington, PA • The Highlands Historical Society  
*Led to exterior and interior restoration (of public spaces) and rehabilitation (of private spaces) for staff operational support of mansion and grounds.*
- 1990 The Oil House at the DL&W Yards (Steamtown National Historic Site)**  
Scranton, PA • National Park Service  
*In collaboration with Leung Hemmler Camayd (Scranton, PA); led to exterior stabilization, interior restoration and interpretation.*
- 1989 Hopper-Van Riper Grist Mill**  
Paramus, NJ • Bergen County Department of Parks & Recreation  
*Mill (c.1832) lost to fire on December 23, 1988 during preparation of HSR and HAER drawings; these documents became a historical narrative of the building, its history and operation.*
- 1989 Henry Spangler Farmhouse**  
Gettysburg, PA • National Park Service, Gettysburg National Military Park  
*In collaboration with John M. Dickey, FAIA and Ortega Consulting; led to exterior restoration and interior rehabilitation.*
-

## SECTION 2 ACCOMPLISHMENTS

### 2.1 Significant Work: Other Preservation Documents

---

- 2008 Condition Assessment and Recommendations Report  
Amstel House and Old Dutch House**  
New Castle, DE • New Castle Historical Society  
*Informed subsequent exterior and interior restoration projects of two furnished and interpreted, 18th-century historic house museums.*
- 2007 Historic Building Master Plan  
Macculloch Hall**  
Morristown, NJ • Trustees of Macculloch Hall  
*Facilitated plans for alternative space uses within the furnished and interpreted, early-20 century historic house museum.*
- 2007 Condition Assessment and Rehabilitation Plan  
Hangars 2 and 3 at Ladd Field**  
Fort Wainwright, Fairbanks, AK • U. S. Army Environmental Center  
*In collaboration with The Louis Berger Group, Inc., (Richmond, VA); informed decisions about reusing two WW-II-era hangers (National Historic Landmarks) versus constructing new.*
- 2007 Condition Assessment and Recommendations Report  
Mill Grove** (home of naturalist and painter J. J. Audubon)  
Audubon, PA • Pew Charitable Trust and Audubon Society  
*Provided scope of work and cost estimate for large grant proposal to support planned adaptive reuse of 18th century historic house museum for galleries, exhibition spaces and offices.*
- 2006 Condition Assessment and Recommendations Report**  
• **Samuel Powel House** - Philadelphia (Society Hill), PA  
• **Grumblethorpe** - Philadelphia (Germantown), PA  
• **Physick-Keith House** - Philadelphia (Society Hill), PA  
• **Waynesborough** - Paoli, PA  
Philadelphia vicinity, PA • Philadelphia Society for the Preservation of Landmarks  
*Provided prioritization for short-term and long-term repairs and upgrades to all four historic house museums as a collective group (all under single management by the Society).*
- 2005 Condition Assessment and Recommendations Report  
John Grass Wood Turning Shop**  
Philadelphia (Old City), PA • Pew Charitable Trust  
*A component of "The Wood Turning Center and the John Grass Company-A Collaborative Future?" feasibility report, prepared by MGA Partners.*
- 2004 Condition Assessment and Recommendations Report  
The Philadelphia Contributionship**  
Philadelphia (Society Hill), PA • The Philadelphia Contributionship Companies  
*Prioritized repairs, upgrades and maintenance of an 18th century Federal-style mansion used as offices for one of America's oldest insurance companies within city historic district.*

## 2.1 Significant Work: Other Preservation Documents

---

- 2004 Analysis of Existing Conditions & Facilities Plan  
Service Wing at Stenton**  
Philadelphia (Germantown), PA • National Society of the Colonial Dames of America  
*Facilitated plans for alternative space uses and proposed new construction to accommodate visitors at a furnished, early 18th-century Georgian mansion museum.*
- 2004 Condition Assessment and Recommendations Report  
Iron Hill Museum**  
Newark, DE • Delaware Academy of Science  
*Informed exterior and interior restoration projects of modest 1920 DuPont school as an historic museum interpreting segregated education in rural New Castle County.*
- 2004 Condition Assessment and Recommendations Report  
Sunny Side Farm House**  
Mount Laurel, NJ • Township of Mount Laurel  
*Informed Mount Laurel Township regarding property significance and ongoing preservation of the house; precipitated subsequent study for site use incorporating organic farming.*
- 2003 Condition Assessment and Recommendations Report  
Thompson-Neely Grist Mill**  
Washington Crossing Historical Park, PA • The Goodfellow Fund  
*Investigated reconstruction of the dam, head race, water wheel, tail race and various architectural upgrades to support mill operation as interpreted feature within existing historic park.*
- 2003 Condition Assessment and Recommendations Report  
Mount Holly Library and Lyceum**  
Mount Holly, NJ • Trustees of the Mount Holly Library  
*Provided prioritization for short-term and long-term repairs and upgrades for mid-19th century mansion (previously converted into local branch library) to continue its service as a library.*
- 2002 Condition Assessment and Recommendations Report  
Barnstormers Theater**  
Ridley Park, PA • Trustees of the Barnstormers Theater  
*Established short-term and long-term repairs and upgrades to an early-20th century Arts-&-Crafts style community theatre.*
- 2002 Condition Assessment and Recommendations Report  
Mule Barn & Scale House**  
Catasauqua, PA • Historic Catasauqua Preservation Association  
*Identified prioritized treatments for the restoration and visitor interpretation of two early-19th century, wood-frame canal buildings along the Lehigh Canal.*

## SECTION 2 ACCOMPLISHMENTS

### 2.1 Significant Work: Other Preservation Documents

---

- 2001 Master Plan  
Cloister Lower Mill**  
Ephrata, PA • Wenger Mill Foundation  
*Examined opportunities to create public visitation and implement repairs and upgrades at a three-story, stone grist mill adjacent to the Ephrata Cloister (National Historic Landmark).*
- 1999 Condition Assessment and Recommendations Report  
Germantown Mennonite Meeting House**  
Philadelphia (Germantown), PA • Germantown Mennonite Historical Trust  
*Identified short-term and long-term repairs and upgrades for mid-19th century stone meeting house in active use for weekly worship and also open for public interpretation.*
- 1997 Condition Assessment and Recommendations Report  
Cambria (now Bethlehem) Iron & Steel Works**  
Johnstown, PA • Southwestern Pennsylvania Heritage Development Corporation  
*Provided recommendations for repairs to four, late-19th century brick industrial buildings (steel production) which were under consideration for adaptive reuse by the National Park Service.*
- 1994 Preservation and Interpretation Plan  
Scranton Iron Furnaces**  
Scranton, PA • Pennsylvania Historical and Museum Commission  
*In collaboration with Lane, Frenchman & Associates and Leung, Hemmler Camayd Architects, plan led to preservation and interpretation projects at public levels of the four stone furnaces.*
- 1994 Rehabilitation Feasibility Study  
R.O. Allen House**  
Bryan, TX • U.S. Federal Bureau of Prisons  
*Provided recommendations and possible reuse schemes for a late-19th century house adjacent to an expanding federal correctional institution.*
- 1993 Condition Assessment and Recommendations Report  
Seashore Trolley Museum**  
Kennebunkport, ME • Trustees of the Seashore Trolley Museum  
*Assessment of 10 museum structures relative to condition and ability of each to accommodate visitors; identification of rolling stock repairs and environmental concerns for trolley storage.*
- 1987 Condition Assessment and Recommendations Report  
Fort Tompkins**  
Staten Island, NY • U.S. Naval Facilities Engineering Command  
*Provided prioritization for short-term and long-term repairs and upgrades of late-19th century Richardsonian Romanesque downtown courthouse.*



## SECTION 2 ACCOMPLISHMENTS

### 2.2 Awards, Honors and Recognition

---

#### NATIONAL

- 2005 **American Association for State and Local History Award of Merit**  
Rehabilitation of Paulsdale, Mount Laurel, NJ
- 2005 **American Association for State and Local History Commendation Award**  
Buggy Factory at the Mifflinburg Buggy Museum, Mifflinburg, PA
- 2004 **National Trust for Historic Preservation Honor Award**  
Ben Schroeder Saddletree Factory Complex, Madison, IN
- 2003 **American Association for State and Local History Award of Merit**  
Ben Schroeder Saddletree Factory Complex, Madison, IN
- 2003 **American Association for State and Local History Award of Merit**  
Morgan Log House, Kulpsville vicinity, PA
- 2002 **Exceptional Transportation Enhancement Project** (from Indiana DOT & FHWA)  
Ben Schroeder Saddletree Factory Complex, Madison, IN
- 2000 **United States General Services Administration Outstanding Preservation Project Award**  
William J. Nealon Federal Courthouse and Post Office, Scranton, PA
- 1993 **American Association for State and Local History Commendation Award**  
Hope Lodge, Fort Washington, PA

#### STATE and LOCAL

- 2011 **AIA Pennsylvania *Citizen Architect* Award** for service to the Commonwealth as Vice Chairman of the Capitol Preservation Committee under the appointments of Governors Ridge (1995), Schweiker (2001), Rendell (2002) and Corbett (2010)
- 2011 **Preservation Alliance of Greater Philadelphia Grand Jury Award**  
Warden's House at the Burlington County Prison Museum, Mount Holly, NJ
- 2011 **New Jersey State Historic Preservation Award from the New Jersey Historic Sites Council**  
Warden's House at the Burlington County Prison Museum, Mount Holly, NJ
- 2011 **Preservation Alliance of Greater Philadelphia Grand Jury Award**  
Folcroft and Morton Train Stations, Folcroft and Morton, Delaware County, PA
- 2005 **New Jersey State Historic Preservation Award from the New Jersey Historic Sites Council**  
Rehabilitation of Paulsdale, NHL, Mount Laurel, NJ
- 2005 **Pennsylvania Historical and Museum Commission Outstanding Preservation Project Award**  
Buggy Factory at the Mifflinburg Buggy Museum, Mifflinburg, PA
- 2005 **Pennsylvania Historical and Museum Commission Outstanding Preservation Project Award**  
Media Armory, Media, PA
- 2005 **Certificate of Appreciation by the Delaware County Heritage Commission**  
Media Armory, Media, PA
- 2002 **Indiana Outstanding Preservation Award from the Indiana Department of Natural Resources, Division of Historic Preservation and Archaeology**  
Ben Schroeder Saddletree Factory Complex, Madison, IN

## 2.2 Awards, Honors and Recognition

- 
- 2004 **S.K. Stevens Stewardship Award from Pennsylvania Federation of Historic Sites and Museums**  
Morgan Log House, Kulpsville vicinity, PA
  - 2003 **Outstanding Project Award from Pennsylvania Federation of Historic Sites and Museums**  
Morgan Log House, Kulpsville vicinity, PA
  - 2000 **Associated Builders and Contractors Award of Excellence**  
Ephrata Cloister, Ephrata, PA
  - 1998 **Preservation Pennsylvania Preservation Initiative Award for Public/Private Partnership**  
Federal Offices at Stegmaier Building (formerly Stegmaier Brewery), Wilkes-Barre, PA
  - 1998 **Pennsylvania Historical and Museum Commission Outstanding Restoration Project Award**  
Addison & Searight's Toll Houses along the National Road, Addison and Uniontown, PA
  - 1997 **Delaware County Heritage Commission Historic Preservation Merit Award**  
Taylor-Evans House, Springfield (Delaware County), PA
  - 1997 **Leedom B. Morrison Award of the Delaware County Heritage Preservation Commission**  
Old Chester Courthouse, Chester (Delaware County), PA
  - 1995 **Preservation Pennsylvania Initiative Award for Historic Property Stewardship**  
Keystone Foundry, Hopewell (Bedford County), PA
  - 1995 **Preservation Coalition of Greater Philadelphia Merit Award for Education and Public Outreach** from Philadelphia Mayor Edward G. Rendell  
*Workshop of the World: A Selective Guide to the Industrial Archeology of Philadelphia* (publication)
  - 1995 **Pennsylvania Historical and Museum Commission Historic Preservation Commendation Award**  
Queen Lane Water Pumping Station, Philadelphia (East Oak Lane), PA
  - 1994 **Office of New Jersey Heritage Outstanding Restoration Project Award**  
Wortendyke Barn, Park Ridge, NJ
  - 1994 **Pennsylvania Historical and Museum Commission Outstanding Restoration Project Award**  
Peace Church, Camp Hill, PA
  - 1994 **International Concrete Repair Institute Award of Excellence**  
Regina Hall (Liberal Arts Building), Marywood College (now University), Dunmore, PA
  - 1992 **Pennsylvania Historical and Museum Commission Outstanding Restoration Project Award**  
Regina Hall (Liberal Arts Building), Marywood College (now University), Dunmore, PA
  - 1993 **Pennsylvania Historical and Museum Commission Outstanding Restoration Project Award**  
Warehouse Building at Old Economy Village, Ambridge, PA
  - 1992 **Pennsylvania Historical and Museum Commission Outstanding Special Project Award**  
Pennsylvania's Extant 221 historic Covered Bridges

## SECTION 2 ACCOMPLISHMENTS

### 2.3 Publications and Lectures

#### *Publications*

---

#### *Publications by John R. Bowie*

February - April, 2014

**Broadcast television interviews** with John Bowie on the repair and restoration of the Main Hall and Old Train Concourse ceilings at Washington Union Station:

WUSA Channel 2 (CBS)

WRC Channel 4 (NBC)

WTTG Channel 5 (Fox)

WJLA Channel 7 (ABC)

*PreservationNation* (Blog of the National Trust for Historic Preservation)

*National Journal* (Washington DC's local business paper)

*DCist* (local on-line newspaper)

*ArchitectMagazine.com* (the on-line magazine of the AIA)

2002 “Repairs at the Troxell-Steckel House of the Lehigh County Historical Society,” published in the ***APT Bulletin, the Journal of the Association for Preservation Technology***, Vol.33, No.1

2000 ***Measured Drawings of Betz's Mill and Bahr's Mill Water Wheel***, the Ressler Mill Foundation Heritage Series, Volume IV

2000 ***Measured Drawings of Mascot Roller Mills***, the Ressler Mill Foundation Heritage Series, Volume V

1990 ***Workshop of the World, A Selective Guide to the Industrial Archeology of Philadelphia***, managing editor and publisher of 368-page guidebook to Philadelphia's rich industrial heritage, published in support of the June 1990 Society for Industrial Archeology National Conference (held in Philadelphia)

1985 “Documentation of America's Industrial Heritage: the Historic American Engineering Record,” published in the ***APT Bulletin, the Journal of the Association for Preservation Technology***, Vol. 18, No. 1.

#### *Publications which reference or include work by John R. Bowie*

2006 “Saltillo and Coles Documentation - Led by John Bowie”, by William Adams, ***Timber Transfer, Friends of the East Broad Top***, Vol. 22, No. 3.

2003 ***The Hackensack Water Works***, by Clifford W. Zinc, The Water Works Conservancy, Inc., Oradell, NJ

2002 “Capping off Major Historical Makeover”, by Kate Campbell, ***Philadelphia Inquirer***, September 8, page K-1.

1997 “Through a Looking Glass: Colonial and Colonial Revival Hope Lodge,” by Loretta Treese, published in ***Pennsylvania Heritage*** magazine, Vol. 23, No. 2

1996 “But is it Really History? Interpreting the Colonial Revival at Your Historic House Museum,” by Brenda Reigle, published in ***History News***, Vol. 51, No. 2.

1996 “Good Engineering, Poor Management: the Battle Creek Hydroelectric System and the Demise of the Northern California Power Company,” by Terry S. Reynolds, Ph.D., ***IA, the Journal of the Society for Industrial Archeology***, Vol. 21, No. 2.

1981 “Blast Furnace Technology in the Mid-19th Century: A Case Study of the Adirondack Iron and Steel Company,” by Bruce E. Seely, Ph.D. ***IA, the Journal of the Society for Industrial Archeology***, Vol. 7, No. 1.

## SECTION 2 ACCOMPLISHMENTS

### 2.3 Publications and Lectures

#### *Lectures*

---

May 2014	<b>"Seismic, structural and historical aspects of the post-earthquake repairs and restoration efforts at Union Station"</b> DC Chapter of the Association for Preservation Technology International
February 2012	<b>"Union Station: an American Icon – Its Architectural Design and Historic Preservation"</b> University of the District of Columbia's Spring 2012 Sustainability Initiative Lecture Series
June 2009	<b>"HAER Documentation of the Coles Water Tank &amp; the Saltillo Station of the East Broad Top RR"</b> Society for Industrial Archeology National Conference in Pittsburgh
May 2008	<b>"Caring for Your Old House"</b> Historic Building Symposium of the Peter Wentz Farmstead, Worcester, Pennsylvania
June 2007	<b>"History and Long-range Preservation of the John Grass Wood Turning Shop"</b> Society for Industrial Archeology National Conference in Philadelphia
June 2004	<b>"Historic Mills as Museums: Practical Considerations on their Presentation to the Public"</b> Place, Memory & Time: Celebrating 300 Years of Milling at the Newlin Grist Mill Conference
September 2003	<b>"Restoration Plans at the Fairmount Water Works"</b> Society for the Preservation of Old Mills National Conference in Monmouth County, New Jersey
June 2002	<b>"Restoration of the Ben Schroeder Saddle Tree Factory: Issues and Challenges in Preserving and Interpreting Industrial Heritage"</b> Society for Industrial Archeology National Conference in Brooklyn, New York
October 2000	<b>"The ADA Ten Years Later: Where are we?"</b> Mid-Atlantic Association of Museums Conference in Washington, D.C.
May 1999	<b>"Applying the Americans with Disabilities Act to Historic Buildings"</b> Pennsylvania Historic Preservation & Heritage Partnerships Conference in York, Pennsylvania
April 1997	<b>"Preserving our Sense of Place: Providing Physical and Programmatic Accessibility without Compromising Integrity"</b> Pennsylvania Conference on Tourism in Harrisburg, Pennsylvania
November 1997	<b>"Fire and Security Systems in Historic Sites and Museums"</b> Rural History Cooperative Annual Meeting in Fort Washington, Pennsylvania
January 1997	<b>"Proposed Reconstruction of the Undershot Water Wheel at the Fairmount Water Works"</b> Fairmount Water Works Interpretive Center Winter Program
March 1996	<b>"Private Parts, A Brief History of Domestic Plumbing in America"</b> Sixth Annual Cliveden Institute Symposium in Philadelphia
June 1994	<b>"Assessing Wear and Tear of Interiors: Repairs beyond Routine Maintenance"</b> Maintenance Workshop of the Tri-State Coalition of Historic Places, Historic House Program's Challenge Grant Program
May 1993	<b>"History and Preservation Challenges at the John Grass Wood Turning Shop"</b> World Wood Turning Conference at the Hagley Museum in Wilmington, Delaware
June 1984	<b>"The HAER Recording Project: Interdisciplinary Documentation of Historic Industrial Sites"</b> Society for Industrial Archeology National Conference in Boston, Massachusetts
September 1983	<b>"Documentation of Engineering Structures"</b> Association for Preservation Technology National Conference in Nashville, Tennessee

---



## SECTION 3 EXHIBITS

### 3.0 Exhibit List

---

#### **Exhibit 3.1 Washington Union Station**

*Repair and restoration of Historic Monumental Spaces*

Washington, DC

Phase 2: 2014

Phase 1: 2013

#### **Exhibit 3.2 Mifflinburg Buggy Museum**

*Restoration to operating condition as historic industrial museum*

Mifflinburg, Pennsylvania

Repository restoration: 2014

Buggy Factory restoration: 2004

#### **Exhibit 3.3 Bertolet Saw Mill at the Daniel Boone Homestead**

*Restoration to operating condition as historic industrial museum*

Birdsboro vicinity, Pennsylvania

Project 2: 2013

Project 1: 1993

#### **Exhibit 3.4 36 Years of HABS/HAER Documentation**

*Contribution to the permanent public record of American Culture*

Multiple locations across the nation

Selected projects from 1980-2009

#### **Exhibit 3.5 Morgan Log House**

*Preservation Projects, Resource Stewardship*

Kulpsville, Pennsylvania

2007

#### **Exhibit 3.6 Ben Schroeder Saddletree Factory Complex**

*Restoration to operating condition as historic industrial museum*

Madison, Indiana

Residence: 2003

Woodworking Shop: 2002

Bench Shop: 2001

#### **Exhibit 3.7 Hope Lodge**

*Interior Paint Restoration - Comparative Architectural Interpretation*

Fort Washington, Pennsylvania

1993

*Except where noted, all photographs in Section 3 Exhibits  
are by John Bowie Associates*

## SECTION 3 EXHIBITS

### 3.1 Washington Union Station

*Repair and restoration of historic monumental spaces*

#### LOCATION

Washington, DC

#### ORIGINAL ARCHITECT

Daniel Burnham

#### ARCHITECT OF RECORD

John Bowie Associates

#### COMPLETION DATES

Phase 2: 2014

Phase 1: 2013

#### ROLE OF NOMINEE

Field investigation, drawings and specifications, and oversee all restoration work

#### PUBLICATIONS

Television coverage between February-April 2014 on WUSA Channel 2 (CBS), WRC Channel 4 (NBC), WTTG Channel 5 (Fox), WJLA Channel 7 (ABC), PreservationNation (blog of the National Trust for Historic Preservation), National Journal (Washington DC's local business paper), DCist (local on-line newspaper) and ArchitectMagazine.com (on-line magazine of the A.I.A.)

#### LECTURES

"Seismic, structural and historical aspects of the post-earthquake repairs and restoration efforts at Union Station," a tour and lecture given at the May 2014 meetings of the DC Chapter of the Association for Preservation Technology International;  
"Union Station: an American Icon - its architectural design and historic preservation," given at the University of the District of Columbia's Spring 2012 Sustainability Initiative Lecture Series, Feb. 2012

#### Building History

Washington D.C.'s Union Station is one of the nation's most recognized and heavily used landmarks. Daniel Burnham designed the station in the classic Beaux Arts style; it opened in 1908. Its coffered, gold-leafed, vaulted Main Hall ceiling soars 96 feet above the floor, making it one of the nation's largest historical public spaces.

By the 1960s, the station had fallen into serious decline; a 1970s effort to transform it into a national visitors' center was unsuccessful. In the 1980s, the station's exterior and primary interior spaces were restored under the direction of the Union Station Redevelopment Corporation (USRC) and the remaining spaces were rehabilitated into highly successful retail shops and restaurants. At present, over 100,000 persons pass through Union Station every day.

On August 23, 2011, a 5.8-magnitude earthquake shook the station, damaging the ornamental plaster ceilings in the Main Hall and Old Train Concourse. This event led USRC to undertake a five-phase, multi-year project to repair and restore the building's monumental interior spaces and building systems. At present, the first two phases are complete.

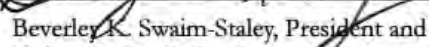
#### Project Description

John's post-earthquake investigation revealed that 40% of the ornamental plaster support systems for the ceilings were irreparably damaged; 70% of the coffers were cracked or broken. The ongoing restoration utilizes an innovatively-designed rolling scaffold system that provides full access for structural reinforcement, plaster repairs and gilding, while permitting complete use of the Main Hall and Concourse spaces by passengers, visitors and patrons of the commercial spaces. The structural reinforcement design employs a steel grillage, installed onto the back side of the ceiling that mechanically ties the decorative plaster coffers to the steel using custom-designed clevis pins, wire ties and washers that reinforce the coffers to resist seismic forces. Cracks are repaired and failed plaster elements replaced in-kind. A new HVAC distribution system is being discreetly and securely integrated into the historic coffers and steel frame. The entire ceiling is being re-gilded to fully preserve Burnham's ethereal barrel vault. In 2013, the restoration of the first bay (Phase 1) was completed and the scaffold system relocated into the second bay for Phase 2. In mid-2014 the second bay was completed; the work is currently in the third bay (Phase 3).

#### Project Significance

The cultural and historical significance of Union Station far exceeds its classical aesthetic ethos considered befitting, by the previous century, for a capital city's proud monument to transportation. The station has observed and supported a nation in transit, in a way few civic buildings can parallel. Its architecture settles a yet unfolding montage of American history. Ongoing stewardship of the station calls for the highest preservation standards. John's careful investigation, research, repair and restoration work includes balancing the demands of invasive construction against the never-closed program of Union Station as national transportation hub, commercial center and tourist destination. Discreetly reinforced to meet present-day seismic requirements, Union Station continues its second century serving the needs of modern transportation without sacrifice of its own rich heritage.

I have personal knowledge that the Nominee was largely responsible for design of the project listed above:

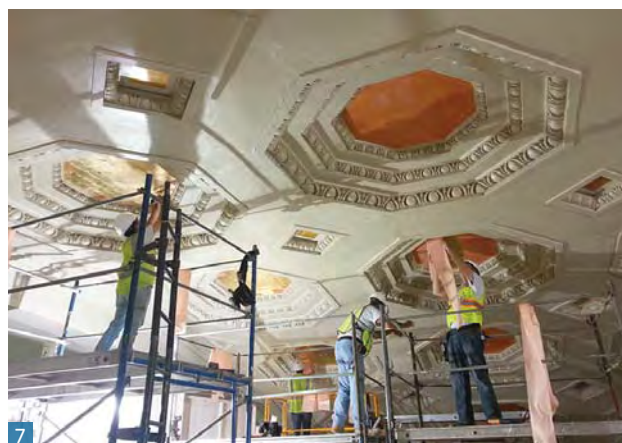
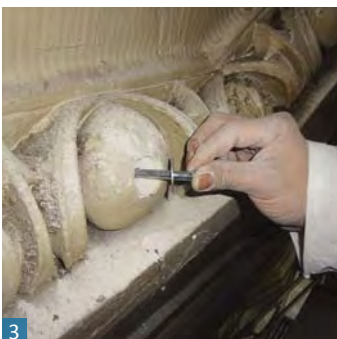
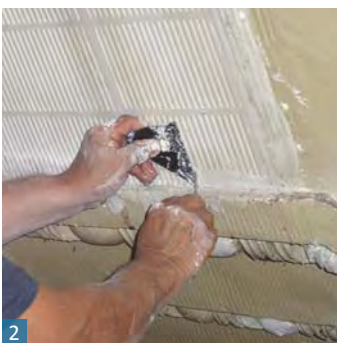
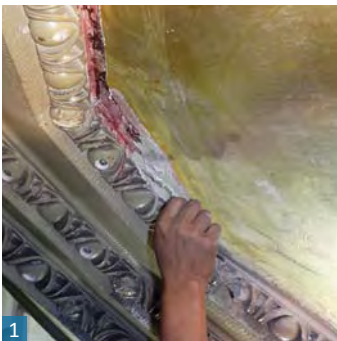
  
Beverly K. Swaim-Staley, President and CEO  
Union Station Redevelopment Corporation



## SECTION 3 EXHIBITS

### 3.1 Washington Union Station

*Repair and restoration of historic monumental spaces*



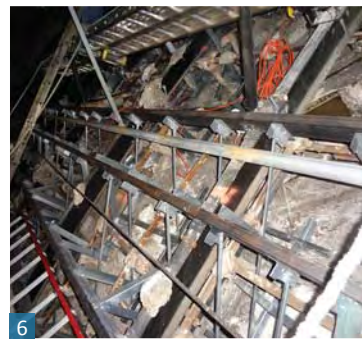
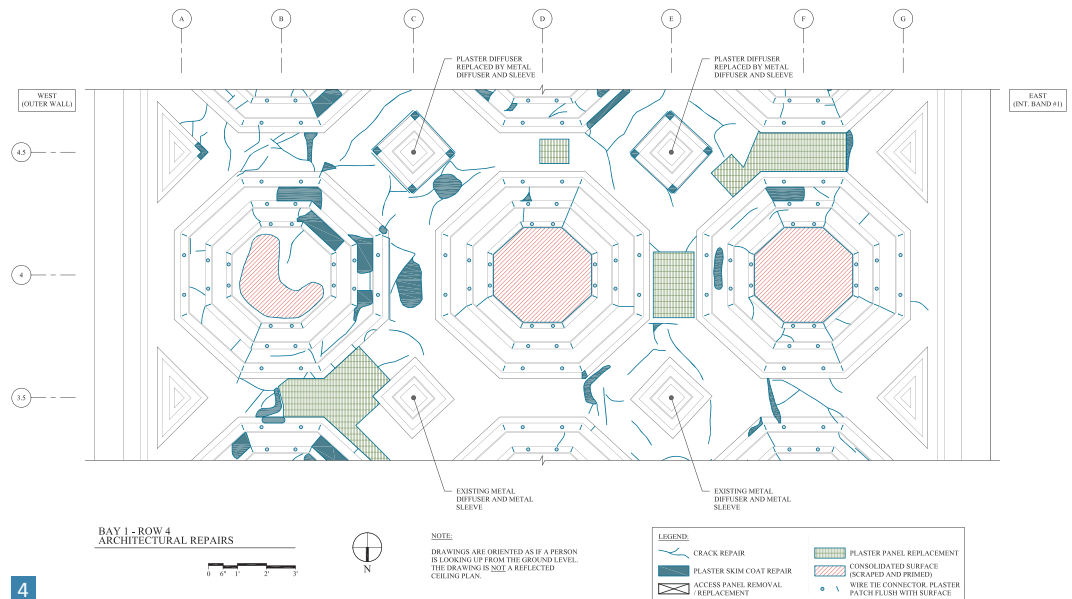
1. Crack repair in Main Hall octagonal coffer
2. Scoring fluting in cast plaster panel between coffers
3. Installing clevis pin, washer and wire tie into eggs and darts
4. Main Hall prior to 2011 earthquake
5. Priming the ceiling
6. Painting the ceiling
7. Gilding the coffers
8. Detail of gilding application
9. Completed ceiling restoration, including HVAC diffusers, 2014

Photographs #4, #5, #6 and #9 by Carol M. Highsmith

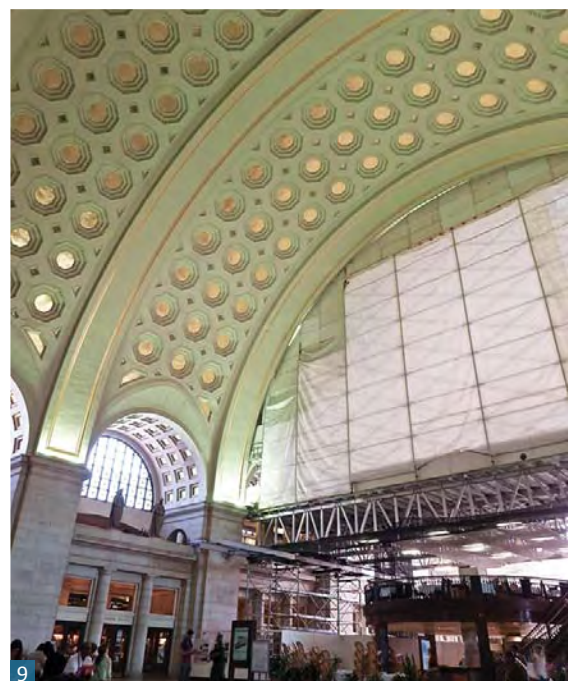


## SECTION 3 EXHIBITS

### 3.1 Washington Union Station *Repair and restoration of historic monumental spaces*



1. Broken Main Hall cross vault coffer
2. Sample of new egg & dart molding alongside existing
3. Setting newly cast cross vault coffer elements in place
4. Drawing showing extent of plaster damage and areas of repair
5. Existing coffer support system before repairs
6. Horizontal steel cross-furring installed onto the attic framing
7. Vertical hangers installed connecting coffers with new cross-furring
8. Salvaged cross vault coffer plaster elements used as molds for new castings
9. Main Hall Bays 1 and 2 complete, and showing rolling scaffolding positioned in Bay 3, 2014





## 3.2 Mifflinburg Buggy Museum

*Restoration to operating condition as historic industrial museum***LOCATION**

Mifflinburg, PA

**ORIGINAL ARCHITECT**

N/A

**ARCHITECT OF RECORD**

John Bowie Associates

**COMPLETION DATES**

Repository restoration: 2014

Buggy Factory restoration: 2004

**ROLE OF NOMINEE**

Field investigation, drawings and specifications, and oversee both restoration projects, including making the machinery operational for demonstration purposes

**AWARDS**

2005 American Association for State and Local History Commendation Award

2005 Penna. Historical and Museum Commission Outstanding Preservation Award

***Building History***

Throughout the late-19th and early-20th centuries, the small, rural borough of Mifflinburg was a regional center for the production of high-quality buggies, carriages and sleighs. William Heiss's business, with its wood-frame buggy factory (constructed 1889) and separate repository (buggy showroom, constructed 1895), was among the town's finest. After Heiss's death in 1931, the business closed, abandoning 40 years of buggy-making equipment within the factory. In 1978, the Mifflinburg Buggy Museum Association was formed to celebrate the town's unique buggy-making heritage. The buildings were cleaned, modestly repaired, and opened for public visitation. In 1979, the property was listed onto the National Register of Historic Places. Grants awarded in 2002 and in 2012 supported substantial restoration to the buildings and associated interpretive enhancements to improve the museum experience.

***Project Description***

**Buggy Factory:** John structurally stabilized the deteriorated wood-framing which lacked a proper foundation and consequently leaned to the side and bulged at the second floor. Stone foundations were underpinned and repaired, and rotted heavy timber wood sills were replaced. Deteriorated, unfinished, exterior wood siding boards were repaired and replaced to match while preserving irreplaceable interior wallpapers and finishes. Wood and steel braces were discreetly added to the walls, ceilings and roof to prevent further racking and meet visitor live-loading requirements. The building's structure was stabilized in place, and the line shafts and equipment were repaired and reset, including the gasoline-powered engine (which powered the line shaft), the table saw, spoke lathe, hub boring machine and hand-operated drill press. The knob & tube wiring and lighting were also restored to return the interior spaces to their illumination levels when the Heiss family operated the factory.

**Repository:** John restored the two-story, wood-frame building, which was built on a stone foundation and set into the slope of the mountain. The stone foundation, heavy timber wood sills, vertical board siding and standing seam roof were extensively restored, as were the knob & tube wiring and lighting. John also repaired the attic summer beam by joining a new parallam beam on top of the original, which was inadequately-sized and badly deflected.

***Project Significance***

The machines and processes employed by skilled buggy tradesmen have nearly vanished. These preservation and restoration projects expand the context for the study, comprehensive interpretation and enriched visitor enjoyment of a rare, surviving example of America's early industrial heritage. Within the setting of modest vernacular buildings, the technology and story of personal transportation is preserved.



1



2

1. Buggy Factory - 2014

2. Repository - 2014

I have personal knowledge that the Nominee was largely responsible for design of the project listed above:

Bronwen A. Sanders, Executive Director  
Mifflinburg Buggy Museum



## SECTION 3 EXHIBITS

### 3.2 Mifflinburg Buggy Museum - Buggy Factory *Restoration to operating condition as historic industrial museum*



1. South elevation, c.1892 to c.1908
2. South elevation, 2014
3. Exhibit: wheel components
4. Original wall finishes
5. Restored first floor workshop
6. Underpinning stone foundation
7. Bracing exterior walls
8. Restored work bench
9. Restored blacksmith's hearth



## SECTION 3 EXHIBITS

### 3.2 Mifflinburg Buggy Museum - Repository Building *Restoration to operating condition as historic industrial museum*



1



2



3



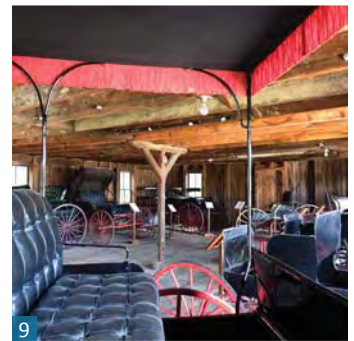
4



5



8



9



6



10



7



11

1. North elevation, 1978
2. North elevation, 2014
3. Restored knob & tube wiring
4. Matching mortar samples
5. Restored buggy exhibit
6. Drilling rod positions
7. Epoxy rod joining of parallam
8. Repairing and replacing siding
9. Restored buggy showroom
10. Spliced joint at rotted sill
11. Steel reinforcement of trusses



## SECTION 3 EXHIBITS

### 3.3 Bertolet Saw Mill at the Daniel Boone Homestead

*Restoration to operating condition as historic industrial museum*

#### LOCATION

Birdsboro vicinity, PA

#### ORIGINAL ARCHITECT

N/A

#### ARCHITECT OF RECORD

John Bowie Associates

#### COMPLETION DATES

Project 2: 2013

Project 1: 1993

#### ROLE OF NOMINEE

Field investigation, drawings and specifications, oversee both restoration projects, making the saw mill machinery operational for demonstration purposes

#### Building History

The Bertolet Saw Mill (c.1760s) is a rare surviving example of an early American “up and down” sawmill. An up-and-down saw mill utilizes a wooden sash with the saw blade affixed to its top and bottom rails. The sash assembly moves vertically, riding in sash guides, much like a double-hung window. Each time the saw sash rises and falls, a series of ratchets and pawls advances the carriage holding the log, feeding it into the saw blade for the next stroke. The entire assembly is powered by a water wheel which simultaneously drives the sash and advances the log carriage.

The mill was threatened with demolition in the late 1960s. All of its equipment and the principal building support elements were relocated to the Daniel Boone Homestead (public historic site) in 1972 by John M. Dickey, FAIA. It was placed on a new foundation adjacent to an existing pond and dam that provided water power. Difficulties in the hydraulics for the relocated mill caused it to only operate for only one season, and by 1974, it was abandoned.

#### Project Description

In 1993, John Bowie investigated and corrected the hydro system for the mill, reconstructed the rotted water wheel, installed a new stainless steel head gate assembly and deepened the tail race. The saw sashes and guides were cleaned and adjusted along with the carriage advancement assembly and the carriage return components. From 1993 until 2012, the saw mill was operated by park staff and volunteers, using water power exclusively.

By 2012, many of the primary framing wood sills had rotted, causing the mill to list and the saw sash to bind against the guides. John raised the mill above its 1972 elevation to protect the sills from further backsplash damage, which had resulted from frequent stops and starts of the mill for visitor demonstration. The rotted sills were replaced and operational components repaired or replaced, including components of the sash guides, and the frame that supports the sash guides. Today, the saw mill continues to operate as it did for more than two centuries.

#### Project Significance

Preservation and restoration of the operational Bertolet Saw Mill allows this museum site to accurately demonstrate how lumber was cut in America from the earliest times of European settlement until the mid-19th century. Visitors to this National Register-listed property, one of only three operating up and down sawmill museums in the nation, enjoy a dynamic learning experience which includes the unique sights, sounds and smells of a water-powered up-and-down saw mill. They witness the application of technology to harness water power and the transformation of pure energy into lumber production. They also learn about the self-sufficiency of early American settlement – a major interpretive theme of the museum. Authentic restoration of this mill preserves the accurate role of its candid architecture to, first and foremost, serve and protect the equipment and the sawyer.



1. East Elevation, 2013

2. South Elevation, 2013

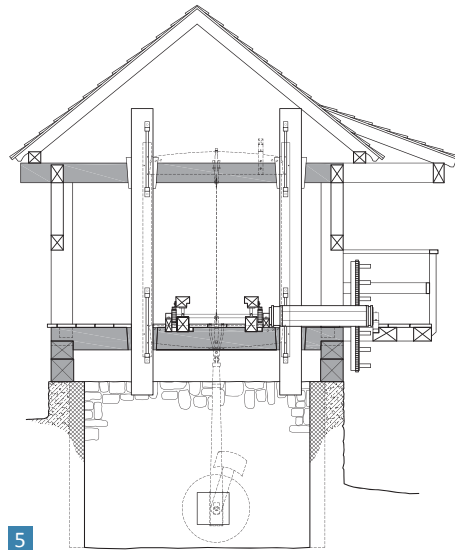
I have personal knowledge that the Nominee was largely responsible for design of the project listed above:

Barry A. Loveland, Chief, Division of Architecture & Preservation  
Pennsylvania Historical & Museum Commission



## SECTION 3 EXHIBITS

### 3.3 Bertolet Saw Mill at the Daniel Boone Homestead *Restoration to operating condition as historic industrial museum*



1. Prior to first restoration, 1992
2. After first restoration, 1993
3. During second restoration, 2013
4. After second restoration, 2014
5. Cross-section at sash assembly
6. Setting the blade pitch
7. Restored sash assembly
8. Log cutting, 2014
9. In full operation, 2014
10. Carriage advancement assembly
11. Restored ratchet and pawl



## SECTION 3 EXHIBITS

### 3.4 36 Years of HABS/HAER Documentation

*Contribution to the permanent public record of American culture*

#### LOCATION

Multiple locations across the nation

#### ORIGINAL ARCHITECT

N/A

#### ARCHITECT OF RECORD

John Bowie Associates,  
HABS/HAER

#### PROJECT DATES

1980 - 2009 (for projects shown here)

#### ROLE OF NOMINEE

Field investigation, drawing preparation

The Historic American Buildings Survey and Historic American Engineering Record (HABS/HAER) program is one of our nation's most treasured and heavily referenced preservation resources. John's contribution to the HABS/HAER Collection began when he was a student in 1978, when the HAER program was less than 10 years old. Throughout his professional career since then, John has developed and refined the art of industrial process interpretation through the completion of more than fifty HABS/HAER documentation projects across the country. Whereas HABS documentation focuses on the architectural details of buildings, industrial sites and buildings are shaped by the processes going on inside them. John's graphic interpretation of these processes (and the buildings, sites and structures as well) has led to a new generation of teams of professionals documenting America's landmark engineering and industrial sites. This includes not only his office staff whom he has mentored over the years, but the many students, architects, engineers, graphic designers and interpretive specialists who have utilized his drawings in the HABS/HAER Collection as inspiration for their own work.

#### PUBLICATIONS (where John's drawings have been used):

*The Hackensack Water Works*, Clifford W. Zink, The Water Works Conservancy, Inc., Oradell, NJ, 2003.

*Measured Drawings of Betz's Mill and Bahr's Mill Water Wheel*, the Ressler Mill Foundation Heritage Series, Volume IV, 2000.

*Measured Drawings of Mascot Roller Mills*, the Ressler Mill Foundation Heritage Series, Volume V, 2000.

"Good Engineering, Poor Management: the Battle Creek Hydroelectric System and the Demise of the Northern California Power Company," by Terry S. Reynolds, Ph.D., *LA, the Journal of the Society for Industrial Archeology*, Vol. 21, No. 2, 1995.

Documentation of America's Industrial Heritage: the Historic American Engineering Record," published in the *APT Bulletin, the Journal of the Association for Preservation Technology*, Vol. 18, No. 1, 1985.

"Blast Furnace Technology in the Mid-19th Century: A Case Study of the Adirondack Iron and Steel Company," by Bruce E. Seely, Ph.D. *LA, the Journal of the Society for Industrial Archeology*, Vol. 7, No. 1, 1981.

#### PUBLICATIONS (about John):

"Saltillo and Coles Documentation – Led by John Bowie," by William Adams, *Timber Transfer, Friends of the East Broad Top*, Vol. 22, No. 3, Winter 2006.

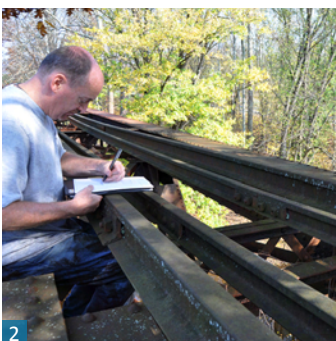
#### LECTURES (by John):

"HAER Documentation of the Coles Water Tank and the Saltillo Station of the East Broad Top RR," given at the June 2009 Society for Industrial Archeology National Conference in Pittsburgh.

"The HAER Recording Project: Interdisciplinary Documentation of Historic Industrial Sites," given at the June 1984 Society for Industrial Archeology National Conference in Boston, Massachusetts.

"Documentation of Engineering Structures," given at the September 1983 Association for Preservation Technology National Conference in Nashville, Tennessee.

I have personal knowledge that the Nominee was largely responsible for design of the project listed above:



1. Adirondack Iron and Steel Company - 1978

2. Pogue Trestle East Broad Top Railroad - 2012

Robert J. Kapsch, Ph. D., Hon. A.I.A., Chief (now retired)  
Historic American Buildings Survey/Historic American Engineering Record (HABS/HAER)

## SECTION 3 EXHIBITS

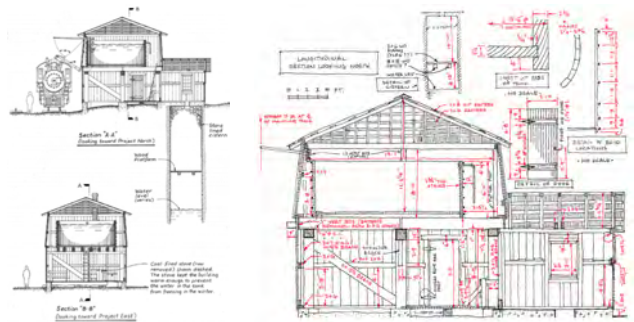
### 3.4 36 Years of HABS/HAER Documentation

*Contribution to the permanent public record of American culture*

#### Coles Water Tank

Saltillo vicinity, Pennsylvania

- Constructed 1919
- National Historic Landmark site
- East Broad Top Railroad
- Steam-era enclosed water station
- Sole surviving tank on this railroad
- Documentation complete 2009

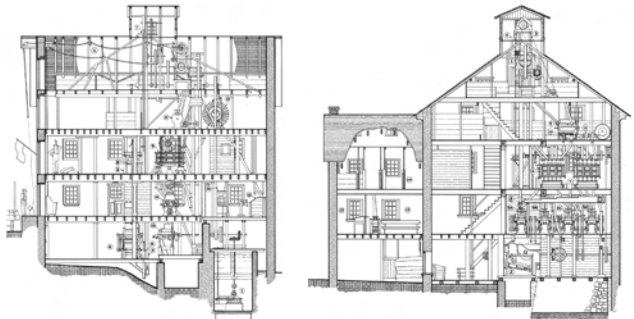


*Drawing documentation of tank facility specific to narrow-gauge, coal-hauling railroad; set includes graphic depiction of how the water tank equipment fills a steam-powered locomotive.*

#### Mascot Roller Mills

Ronks, Pennsylvania

- Constructed c.1740
- Operational milling museum
- Four-story stone/wood grist mill
- Exceptionally complete artifact
- Comprehensive 24-sheet set
- Documentation complete 1998

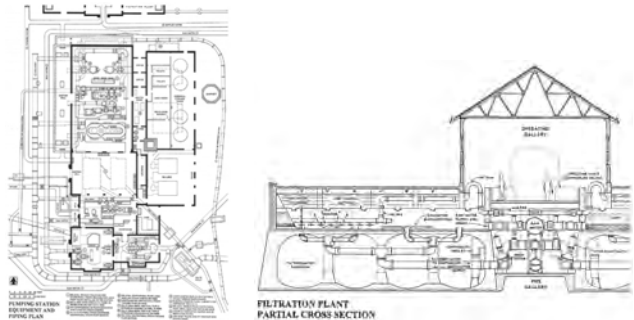


*Drawing documentation of mill construction and grain processing system components; set includes graphic interpretation of grain refinement from receipt (raw) to delivery (finished).*

#### New Milford Plant

Oradell, New Jersey

- Constructed 1882-1990 (closed)
- National Register site
- Hackensack Water Company
- Pioneer of Public Water Systems
- Pumping-Purification Equipment
- Documentation complete 1998

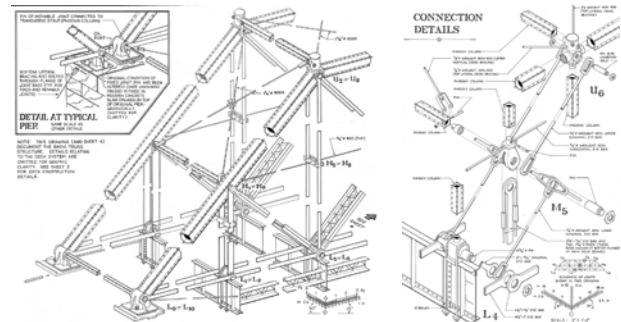


*Documentation of structures and equipment within 14-acre site along Hackensack River; set conveys architectural, pumping and purification system chronology over 100 years.*

#### Walnut Street Bridge

Harrisburg, Pennsylvania

- Constructed 1890
- National Register listed
- National Historic Civil Eng. Landmark
- 2,820' length, through-truss
- Three spans destroyed in 1996
- Documentation complete 1996



*Documentation of fifteen pin-connected, wrought iron truss spans (Susquehanna River); includes construction assembly drawings of 1862-patented "Phoenix-column" members.*



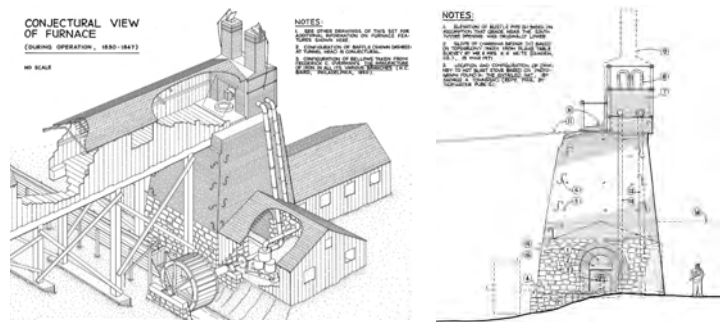
## SECTION 3 EXHIBITS

### 3.4 36 Years of HABS/HAER Documentation

*Contribution to the permanent public record of American culture*

#### Nassawango Iron Furnace Snow Hill vicinity, Maryland

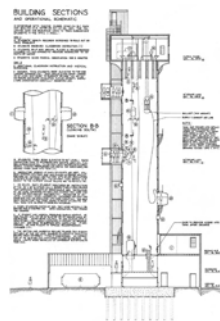
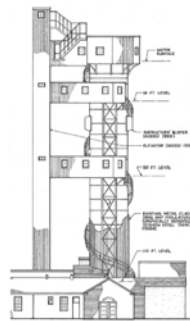
- Constructed 1830
- American Ironmaking
- Cold to hot blast technology
- Survives as a stabilized ruin
- Interpreted public space
- Documentation complete 1989



*John's drawings document its construction and graphically illustrate how the furnace operated to produce pig iron from bog ore.*

#### Submarine Escape Training Tank New London, Connecticut

- Constructed 1929
- U.S. Navy submariner training
- 120 feet tall, diameter 16 feet
- Decommissioned 1982
- Only tank built in continental U.S.
- Documentation complete 1988



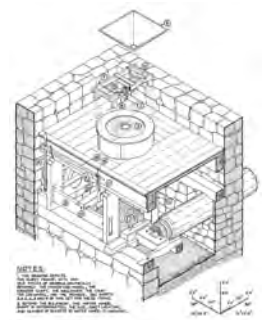
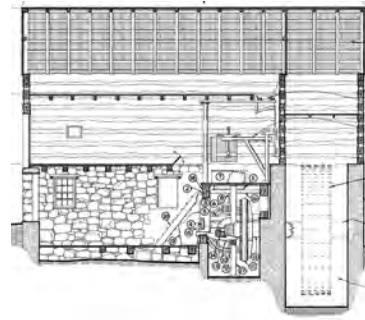
*Right Photo: HAER No. CT-37-A-42*

*Drawing documentation of construction and alteration of critical military facility used over 40 years for submerged escape training of naval personnel.*

#### Betz Mill

Lynnville vicinity, Pennsylvania

- Constructed c.1770
- Log-frame grist mill
- Near collapse when documented
- Intact, complete wooden gearing
- Demolished, technology recorded
- Documentation complete 1983

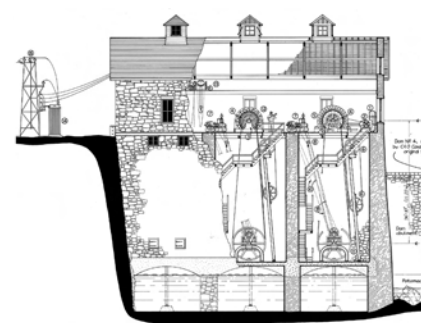
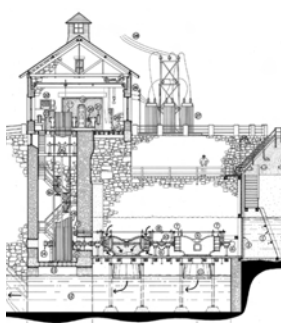
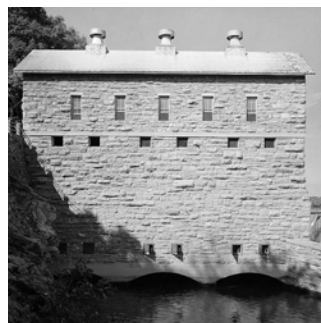


*Drawing documentation of exceptionally complete early mill with wooden hurst frame; includes graphic depiction of milling component assembly and operation by miller.*

#### Dam 4 Hydroelectric Plant

Stepherdstown vicinity, WV

- Constructed 1906
- Stone/concrete construction
- Active power-generating facility
- Potomac River Heritage
- Sole U.S. rope-driven plant
- Documentation complete 1980



*Left Photo: HAER No. WV-27-16,  
by Jet Lowe, 1980*

*Drawing documentation of plant construction, river-supply hydrology and generating equipment; includes horizontal shaft turbines and operation of early rope driven system.*

## 3.5 Morgan Log House

*Preservation projects and resource stewardship***LOCATION**

Kulpsville, PA

**ORIGINAL ARCHITECT**

N/A

**ARCHITECT OF RECORD**

John Bowie Associates

**COMPLETION DATE**

2007

**ROLE OF NOMINEE**

Field investigation, report preparation, drawings and specifications, oversee all restoration projects

**AWARDS**

2004 S.K. Stevens Award by the Pennsylvania Federation of Historic Sites and Museums

2003 Award of Merit from the American Association for State and Local History

2003 Outstanding Project Award from the Pennsylvania Federation of Historic Sites and Museums

**PUBLICATIONS**

"Capping off Major Historical Makeover," by Kate Campbell, *Philadelphia Inquirer*, September 8, 2002, page K-1.

***Building History***

The Morgan Log House was built by Edward Morgan, an early settler, c.1708. It is a two-story log building with medieval Germanic influences which include a central cooking hearth and chimney, a winder stair to second floor bedrooms, sliding wood windows with pegged muntins, and a rare, double-tapered, side-lapped, wood shingle roof. The house remained in private ownership until 1970, when the Township of Towamencin purchased it to prevent its demolition. Noted historical architect G. Edwin Brumbaugh FAIA restored the building, reconstructing many of its lost details and adding a caretaker's addition onto an old stone foundation that adjoined the building. The Morgan Log House was opened to the public in 1976 under the auspices of the Towamencin Historical Society.

In 1996, John prepared a condition assessment report on the building which studied deterioration that had occurred since the log house began operation as a museum. In response to the needs of an actively interpreted historic resource, the report also: 1) determined those repairs necessary to maintain a museum-grade environment for the Morgan collection of historic furnishings and 2) evaluated the impact of the directed visitor experience upon the historic fabric.

***Project Description***

The condition assessment report identified four primary concerns; each was systematically addressed in projects over the next 11 years, as funding became available. Discreet lighting and alarm systems were installed (completed in 1999); excess moisture levels were corrected in the foundation and basement (completed in 2000). In the third project, the double-tapered, side-lapped shingle roof was replaced (completed 2003). The fourth project (completed in 2007) included *in situ* repair of numerous surviving original logs and the redaubing of failed mortar joints using precisely matched mortars. Throughout these projects, John collaborated with the Society's director to develop a long-range inspection and maintenance plan for the building, based on performance of the surviving original elements, various materials installed in the early 1970s, and on the projected lifespan of the newly installed materials and systems.

***Project Significance***

The Morgan Log House is a distinctive surviving example of medieval Germanic construction within the United States (placed onto the National Register of Historic Places in 1973). The roofing project served as a well-referenced, practical study in the crafting of hand-split shingles (inclusive of cross-grain taper) and their installation in side-lapped fashion with face nailing. These roofing methods were subsequently employed in three other early-German roof replacement projects at historic museum sites in southeastern Pennsylvania over the next four years. The tenure of projects collectively demonstrates John's commitment to expanding preservation through the fostering of client stewardship. Within the challenging context of small historic house museums, the Morgan Log House sustains its public history mission through diligent stewardship of its architecture.

I have personal knowledge that the Nominee was largely responsible for design of the project listed above:

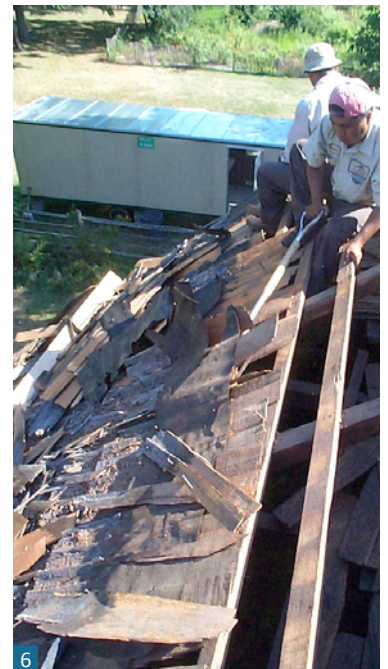
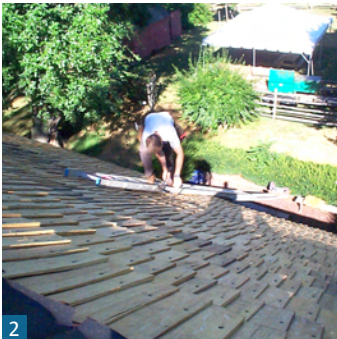
---

Sarah DiSantis, Executive Director  
Morgan Log House

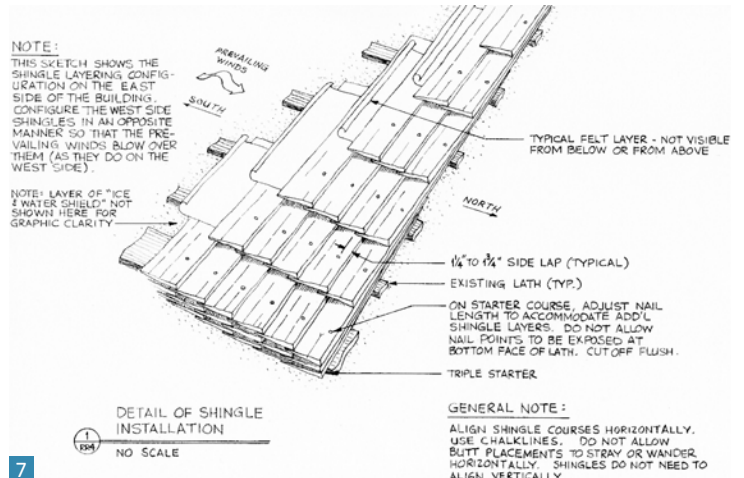


## SECTION 3 EXHIBITS

### 3.5 Morgan Log House *Preservation projects and resource stewardship*



1. Roof details prior to restoration, 2002
2. Roof shingle replacement
3. Roof shingle replacement
4. Samples of double-tapered shingles
5. Completed roof installation, 2003
6. Roof shingle demolition
7. Construction drawing
8. Side-lapping the shingles





## SECTION 3 EXHIBITS

### 3.5 Morgan Log House

*Preservation projects and resource stewardship*



1. Start of restoration, 2007
2. Completed west elevation, 2007
3. Matching daubing mortar
4. Repaired sliding wood windows
5. Nearing completion, 2007
6. Installing daubing mortar
7. Repairing joint at door head
8. Repairing joint at door sill





### 3.6 Ben Schroeder Saddletree Factory Complex

*Restoration to operating condition as historic industrial museum*

#### LOCATION

Madison, IN

#### ORIGINAL ARCHITECT

N/A

#### ARCHITECT OF RECORD

John Bowie Associates

#### COMPLETION DATES

Residence: 2003  
Woodworking Shop: 2002  
Bench Shop: 2001

#### ROLE OF NOMINEE

Research, field investigation, drawings and specifications, and oversee all three restoration projects, including making the machinery operational for demonstration purposes

#### AWARDS

2004 National Trust for Historic Preservation Honor Award  
2003 American Association for State and Local History Award of Merit  
2002 Indiana Division of Historic Preservation & Archeology's Most Distinguished Restoration Project Award

#### PUBLICATIONS

Citation in the "National Transportation Enhancement Clearinghouse Publication on Exceptional Transportation Enhancement Projects," published jointly by the Federal Highway Works Administration and the National Trust for Historic Preservation

#### LECTURES

"Restoration of the Ben Schroeder Saddle Tree Factory: Issues and Challenges in Preserving and Interpreting Our Industrial Heritage," given at the June 2002 Society for Industrial Archeology Conference in Brooklyn, NY

#### Building History

A saddletree is the wooden frame of a saddle which is typically clad in a rawhide or cloth cover. Its complex, curved components are designed to distribute the rider's weight safely across the horse's back. Situated on the Ohio River, midway between Cincinnati and Louisville, Madison was a leading center of saddletree production in the United States throughout the 19th century. John Benedict "Ben" Schroeder's factory was one of 13 saddletree factories in Madison. It operated from 1878 until the death of his son Joe Schroeder in 1972.

When Historic Madison, Inc. (HMI) acquired the Schroeder property in 1975, the factory complex was exactly as it had been when Joe Schroeder died, filled to the rafters with patterns for saddletree components and hand tools collected over the previous 94 years. HMI staff researched the buildings and their contents and learned that the Schroeder complex was a unique and remarkably intact survivor of American manufacturing, worthy of restoration and interpretation to the public.

#### Project Description

Due to the narrowness of the site, work on the buildings was undertaken in consecutive projects. The first project, restoration of the Bench Shop/Blacksmith Shop, involved: foundation and structural stabilization; repairs to doors, windows and siding; reroofing; restoration of the knob & tube wiring and lighting, and electrical service upgrades.

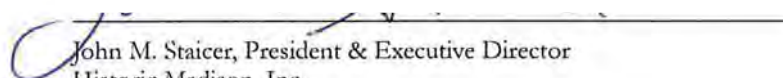
The second project focused on the Woodworking Shop, with its appended Saw Mill, Boiler Room and Generator Room. Restoration work included: extensive foundation and structural repairs; replacement of the deteriorated floor; repairs to doors, windows and siding; reroofing; restoration of the knob & tube wiring and lighting (to provide lighting at the same wattages and the same locations as used by the Schroeders), and electrical upgrades. All machinery was carefully removed, restored to operational condition, and reinstalled—including the electric motors, shafts, pulleys and belts. Modifications to protect the visiting public included the installation of discreet belt guards and a complete machine safety lock-out system.

The Residence was restored and rehabilitated to accommodate interpretive exhibits on the Schroeder family and the manufacture of saddletrees (first floor) and a new site manager's office on the second floor. The project involved: exterior brick repair and cleaning; repairs to doors, windows and interior finishes; installation of new HVAC, and upgrades to the lighting and electrical system.

#### Project Significance

The Ben Schroeder Saddletree Factory Complex is the sole U. S. survivor of saddletree production, a manufacturing process that created an essential transportation product used by every person who rode a horse in America until automobiles replaced them. The carefully preserved buildings and machines are available for future generations to experience as a fully-interpreted component of the remarkable 133-block Madison National Historic Landmark District.

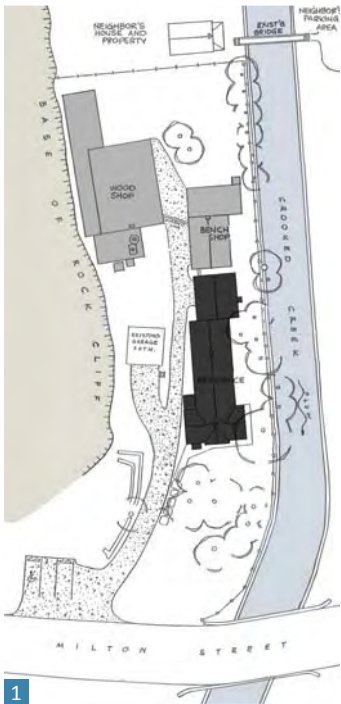
I have personal knowledge that the Nominee was largely responsible for design of the project listed above:

  
John M. Staicer, President & Executive Director  
Historic Madison, Inc.



## SECTION 3 EXHIBITS

### 3.6 Ben Schroeder Saddletree Factory Complex *Residence*

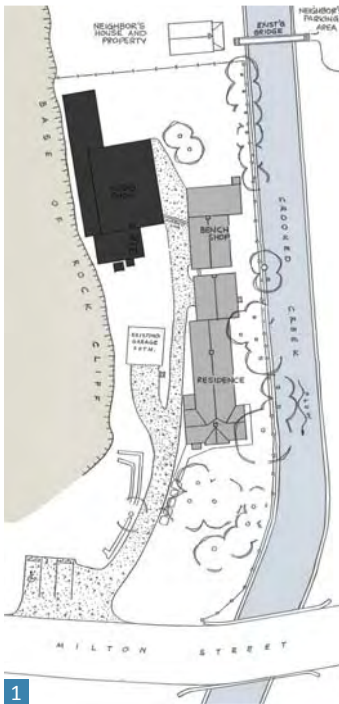


1. Site Plan: Residence shown dark
2. Prior to restoration, 2002
3. Stacked saddletrees, 1974  
LOC/HAER IN-26-28, Jack Boucher,  
photographer
4. After restoration, 2004
5. Interior finish restoration
6. Accessible entry
7. Exterior painting
8. Exterior restoration



## SECTION 3 EXHIBITS

### 3.6 Ben Schroeder Saddletree Factory Complex *Woodworking Shop*



1



3



2



4



6



7

1. Site Plan: Woodworking Shop shown dark
2. Prior to restoration, 2001
3. Restored interior and machines, 2004
4. Restored exterior elevations, 2004
5. Testing planer operation after restoration
6. Repair of appended Saw Mill
7. Repair of Generator Room roof
8. Installing new belt onto custom shaper



5

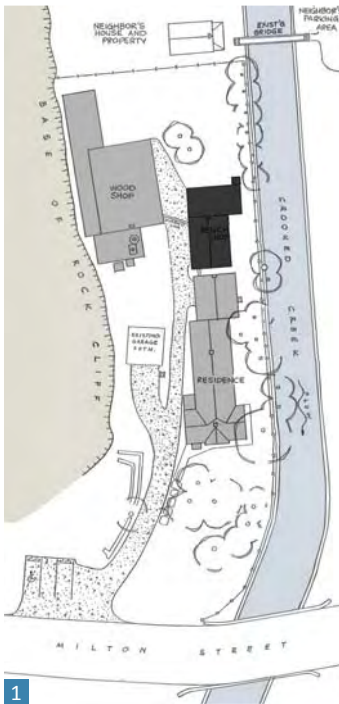


8



## SECTION 3 EXHIBITS

### 3.6 Ben Schroeder Saddletree Factory Complex *Bench Shop*



1



2



3



4



5



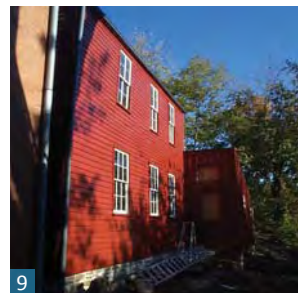
6



7



8



9



10



11

1. Site Plan: Bench Shop shown dark
2. Prior to restoration, 2000
3. Prior to restoration, 2000
4. Restored bench area, 2004
5. West elevation during restoration
6. East elevation during restoration
7. Roofing progress
8. Restored interior finishes, 2004
9. Interior restoration along bench
10. Interior restoration above bench
11. East elevation during restoration



## 3.7 Hope Lodge

*Interior paint restoration for comparative architectural interpretation***LOCATION**

Fort Washington, PA

**ORIGINAL ARCHITECT**

N/A

**ARCHITECT OF RECORD**

John Bowie Associates

**COMPLETION DATE**

1993

**ROLE OF NOMINEE**

Conduct research, prepare specifications, procure specialized materials, conduct training, oversee the preparation, cleaning, priming, painting and graining work by the volunteers

**AWARDS**

1993 American Association for State and Local History Certificate of Commendation

**PUBLICATIONS**

"Through a Looking Glass: Colonial and Colonial Revival Hope Lodge," by Loretta Treese, published in *Pennsylvania Heritage Magazine*, Vol. 23, no. 2, 1997

"But is it Really History? Interpreting the Colonial Revival at Your Historic House Museum," by Brenda Reigle, published in *History News*, Vol. 51, No. 2, Spring 1996

**Building History**

Hope Lodge is a celebrated example of Early Georgian domestic architecture. It was constructed between 1743 and 1748 by Samuel Morris; his was the first of nearly two centuries of wealthy Philadelphia families to own it. In 1922, the house was spared demolition by patron preservationists William and Alice Degn, who purchased it as residence and suitable setting for their 18<sup>th</sup> and early 19<sup>th</sup>-century collection of art and furnishings. The Degns began deliberated restoration under noted Philadelphia architect Paul Cret, FAIA. Cret repaired areas of long-term deterioration and "restored" the house interiors in the Colonial Revival style, painting all the plastered surfaces and wood components white—the color presumed by many scholars and architects (at that time) to be the true Colonial style. After Mrs. Degn's death, the Commonwealth of Pennsylvania acquired Hope Lodge, opening it for public visitation in 1957.

In 1991, a bold interpretation scheme was developed for the interior of Hope Lodge. Paint analysis of the original 18<sup>th</sup>-century finishes documented intense Colonial colors—ones largely unseen by modern eyes much more familiar with the monochromatic white backdrop of early 20<sup>th</sup>-century Colonial Revivalism. The plan proposed to interpret the interior rooms on the south side of the center hall to the Degn family Colonial Revival era while rooms on the north side of the center hall (plus the center hall itself) would be interpreted to the Morris family Colonial era. With no funds available to hire commercial painters to undertake the project, the nonprofit associates group—Friends of Hope Lodge (FHL) assisted the Commonwealth by donating their time and talent.

**Project Description**

John Bowie coordinated the technical training and led the following six primary project tasks: 1) specifications to assist the FHL in ordering the proper materials and equipment for the project; 2) planning the sequence of work over a two-year period; 3) instruction on cleaning, priming and painting surfaces with authentic 1930s-era products (Colonial Revival rooms); 4) technical training for finely grinding Prussian blue, yellow ochre and lampblack pigments, blending with pure linseed oil and titanium dioxide (white lead was no longer available), and applying long-drawn strokes with round-headed, natural bristle brushes (Colonial rooms); 5) preparation and installation of custom-blended gum Arabic and shellac glaze to give a uniform level of gloss to all painted and grained wood surfaces; and 6) techniques of applying lime-instilled paint (to simulate whitewash) onto the plaster walls and ceilings (Colonial rooms).

**Project Significance**

The project documented and rejuvenated two period-authentic paint applications, inclusive of materials and tools, to accurately represent and distinguish the historic texture, color and finish of each period. The project disseminated these techniques through the FHL volunteers who faithfully executed the work and all subsequent visitors to Hope Lodge who enjoyed a rare tandem interpretation of Colonial history and Colonial Revivalism. Hope Lodge was the first historic house museum to undertake this type of project. Visitors are enveloped by the high contrast of authentic 18<sup>th</sup> century color against muted 1930s Colonial Revivalism and thereby challenged to reconsider how history has been interpreted to them elsewhere.

I have personal knowledge that the Nominee was largely responsible for design of the project listed above:

Brenda Reigle, Director, Bureau of Historic Sites and Museums  
Pennsylvania Historical & Museum Commission

## SECTION 3 EXHIBITS

### 3.7 Hope Lodge

*Interior paint restoration for comparative architectural interpretation*



1



2



3



4



5



7



8

1. Hope Lodge, 2014
2. Priming Degn-era woodwork
3. Preparing Morris-era woodwork
4. Restored Morris-era Parlor looking through Center Hall into restored Degn-era Parlor
5. Fine-grinding Prussian blue pigment
6. Restored Degn-era Parlor
7. Preparing Center Hall
8. Preparing graining samples
9. Prepared Degn-era Parlor

*Photograph #4 by A. Pierce Bounds*



6



9

## SECTION 4 REFERENCE LETTERS

---

**Alan Greenberger, FAIA**  
Deputy Mayor

**City of Philadelphia** (former principal with MGA Partners)  
1515 Arch Street, Philadelphia, PA 19102

*Professional relationship to candidate:* Professional colleague - collaborated with candidate on “The Wood Turning Center and the John Grass Company, A Collaborative Future?” adaptive reuse feasibility study project while principal with MGA Partners.

**Hyman Myers, FAIA**  
Preservation Consultant

**VITETTA** (retired principal)  
Merion Station, PA 19066

*Professional relationship to candidate:* Former employer and professional colleague – employer and mentor to candidate from 1983 to 1986, and collaborated with candidate on numerous projects at the PA State Capitol from 1995-2011.

**Glenn W. Birx, FAIA**  
Vice President and Principal

**Ayers Saint Gross, Inc., Architects**

1040 Hull Street, Suite 100, Baltimore, MD 21230

*Professional relationship to candidate:* Professional colleague – long-time collaboration on business development and professional standards of care.

**Frank W. Grauman, FAIA**  
Principal

**Bohlin Cywinski Jackson**

123 South Broad Street, Suite 1370, Philadelphia, PA 19109

*Professional relationship to candidate:* Professional colleague – long-time collaboration with candidate on numerous preservation projects in northeastern Pennsylvania.

**Robert J. Kapsch, Ph.D.,  
Hon. AIA**  
Chief (retired)

**Historic American Buildings Survey/Historic American Engineering Record  
(HABS/HAER)**

Gaithersburg, MD 20878

*Professional relationship to candidate:* Professional colleague – long-time collaboration with candidate on numerous documentation projects across the country.

**John M. Staicer**  
Executive Director

**Historic Madison, Inc.**

500 West Street, Madison, IN 47250

*Professional relationship to candidate:* Client – candidate worked closely with Mr. Staicer for nine years researching and carefully restoring the Saddletree Factory site and buildings.

**Rep. Paul M. Clymer**  
Chairman

**Pennsylvania Capitol Preservation Committee**

Room 630, Main Capitol Building, Harrisburg, PA 17120

*Professional relationship to candidate:* Professional colleague – long-time collaboration with candidate on numerous projects at the PA State Capitol from 1995 to the present.



