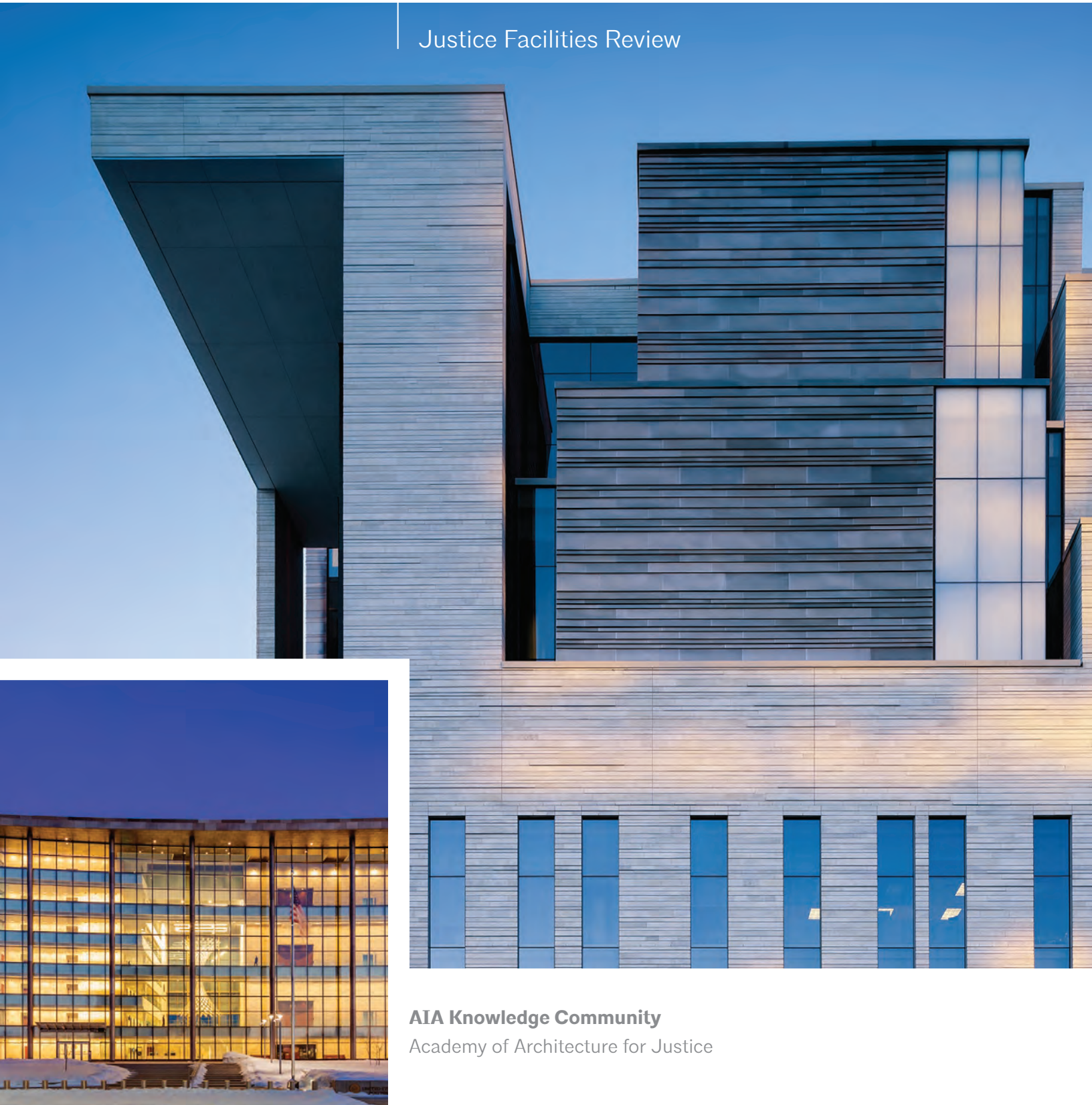


JFR16

Justice Facilities Review



AIA Knowledge Community
Academy of Architecture for Justice

JFR16

Justice Facilities Review

AIA Knowledge Community
Academy of Architecture for Justice

Copyright 2016 The American Institute of Architects

All rights reserved

Printed in the United States of America

The project information in this book has been provided by the architecture firms represented in the book. The American Institute of Architects (AIA) has no reason to believe the information is not accurate, but the AIA does not warrant, and assumes no liability for, the accuracy or completeness of the information. It is the responsibility of users to verify the information with the appropriate architecture firm or other sources.

The American Institute of Architects

1735 New York Avenue, NW

Washington, D.C. 20006

2016 Academy of Architecture for Justice Leadership Group

Erin Persky, Assoc. AIA, chair

Amy Finlayson, RA

Melissa Farling, FAIA

Lorenzo M. Lopez, AIA, past chair

Linda Bernauer, AIA, past chair

AIA staff

Terri Stewart, CAE, senior vice president, Knowledge and Practice

Douglas Paul, senior director, Knowledge Communities and Resources

Kathleen Simpson, CAE, director, Knowledge Communities

Elizabeth S. Wolverton, senior manager, Honors and Awards

Emma Tucker, specialist, Knowledge Communities

Design: Nancy Bratton Design

Editor: Janet Rumbarger

Cover photos: U.S. Courthouse, Austin, Texas (Mack Scogin Merrill Elam Architects; photo ©Casey Dunn); inset: Cedar Rapids U.S. Courthouse (William Rawn Associates, Architects; photo ©Robert Benson Photography)

Contents

Jury members.....4

Jury comments

The view from the chair7

Citations

United States Courthouse, Austin, Texas.....10

Cedar Rapids U.S. Courthouse.....14

Court facilities

Dennis Maes Pueblo Judicial Building.....20

Judge Seymour Gelber and Judge William E. Gladstone

Miami-Dade Children’s Courthouse.....22

Madera County Courthouse, California.....24

Ralph L. Carr Colorado Justice Center26

Sutter County Courthouse28

Utah Courts—Ogden Second District Juvenile Courthouse.....30

Index of architects32

Jury members



Jury chair

Mark Ryan, AIA
HDR Architecture
Phoenix

Mark's diverse work has been exhibited nationally and internationally, received numerous design awards—including three AIA AAJ Citation

awards—and been published in several books and periodicals. His keen focus on the value that good design brings to both the individual and the collective community is exemplified by projects such as the San Francisco Youth Guidance Center, the Johnson County (KS) Youth and Family Services Center, and RE-JUV for the Colorado River Indian Tribes. His approach is highlighted by projects that are simultaneously civic in nature and personal in their potential impact, and recognized for their specific, thoughtful solutions to challenging conditions.

He has lectured on urban studies and sociology, in addition to architecture, and is frequently a visiting design critic at institutions across the country. Since 2004, he has been an adjunct professor at Arizona State University and the University of Arizona, exploring design pedagogy through graduate and undergraduate studios.

Mark received his initial training in architecture at the University of Cincinnati, while also letting in intercollegiate athletics, followed by graduate school at the Architectural Association in London as a Foundation Scholar.

In private practice since 2002, engaged in public art and urban design as well as architecture and education, Mark joined HDR in January 2016 as design principal. An AIA Phoenix Metro Chapter board member starting in 2013, he currently serves as chapter president.



Kathryn Griffin
Circuit and Probate Courts
St. Joseph County, Michigan

Kathryn Griffin is the court administrator for the Circuit and Probate Courts in St. Joseph County, Michigan. She has been Circuit Court administrator since 2005 and added the role of Probate Court adminis-

trator in 2013. Before becoming administrator, she was employed as the Circuit Court judicial assistant, beginning in 1997. She is responsible for maintaining judges' trial docket, managing case flow, reporting requirements to the State Administrative Office, and managing all human resources for the courts.

She is the current president of the Michigan Association of Circuit Court Administrators and has held that position since 2011. She served as vice president from 2009 to 2011.

Ms. Griffin attended Kellogg Community College and Glen Oaks Community College and is a graduate of the court manager program at the National Center for State Courts. She graduated from the Michigan State Judicial Administration Program in 2013. She currently serves on the NACM State Association Committee, Conference Development Committee, and Membership Committee and is the chair of the new NACM Core Committee.



Brian Meade, AIA, LEED AP
Dewberry
Elgin, Illinois

Brian Meade is the National Public Safety Practice segment leader for Dewberry as well as design director in the Elgin office. He helps foster both client and project development in this building type throughout

Dewberry's eight architecture offices around the country. This experience gives him unique insights into developing trends, which often involve combined and collocated facilities.

With 21 years of experience, Mr. Meade has planned and designed a variety of building types, including public safety, municipal, religious, and academic projects. His project approach involves innovative, cost-effective solutions for municipalities nationwide, including the Hanover Park (IL) Police Headquarters, named the best government building of the year (2012) by Engineering News-Record Midwest. The Killeen (TX) Police Headquarters, Tolleson (AZ) Police and Court Center, and the Hanover Park (IL) Police Headquarters also received national Justice Facility Review awards from the AIA's Academy of Architecture for Justice in 2011, 2012, and 2014.

Brian has spoken on the topic of public safety building design and best practices over the past five years in both the United States and Canada. A registered architect in Illinois, he holds a BSAS and an M. Arch. degree from the University of Illinois at Urbana-Champaign.



Patricia Rhee, AIA, DBIA,
LEED AP

EYRC Architects
Culver City, California

Patricia Rhee has been a member of EYRC Architects since 2000 and a partner of the firm since 2014. The firm received the 2015 National AIA Firm Award, one of the profession's

highest honors. Patricia has served as project architect and project designer for several of the firm's award-winning educational and civic projects, and has also served as the lead designer in many of the firm's design competitions, both international and domestic. These include the winning schemes for the United Arab Emirates' Federal National Council Parliament Complex, the GSA's John M. Roll Federal Courthouse, the New Abuja City Gate, and the Contemporary Art Center at the University of California, Irvine. Patricia also heads the intern program at Ehrlich Architects, which has attracted students from all over the globe.

She was recently appointed to the U.S. Department of State Overseas Building Operations Industry Advisory Group, for which she has also served as a peer reviewer, and is currently serving on Cal Poly San Luis Obispo's Architecture Advisory Board. Patricia has lectured internationally, at the Hearst Lecture Series at Cal Poly San Luis Obispo, the World Architecture Festival in 2010, and was recently a featured speaker at AIA Los Angeles' POWERFUL Women in Design symposium and AIA Women's Leadership Summit. Patricia received her M. Arch. from Harvard's Graduate School of Design and her Bachelor's degree from the University of Pennsylvania. Patricia is an active member of the AIA and the Design-Build Institute of America. She has served on design juries at the University of Southern California and Woodbury University, and is an active member of the DBIA National Awards Jury.

Patricia's work has been widely published in *Architect* magazine, *Architectural Record*, *Interior Design* magazine, and *Variety*.



Lawrence R. Rodriguez
Tolleson Police Department
Tolleson, Texas

A third-generation Tolleson native, Larry Rodriguez returned to serve his hometown as chief of police in 1999. After a career that spanned 26 years with the Tempe Police Department, with assignments as a

patrol officer, narcotics undercover, crime prevention, community relations, criminal investigations, patrol sergeant, traffic sergeant, and crime prevention sergeant, Larry retired as a sergeant in November 1999. The myriad career assignments provided a solid foundation for his present position as chief of police for the Tolleson Police Department. He has 42 years in the law enforcement profession.

Establishing a solid direction of serving the needs of the community, facilitating the professional growth of his police staff, encouraging a team atmosphere, and maintaining a commitment toward a community-based policing philosophy are the foundational pillars of his administration. Larry is confident that by developing, gaining, and nurturing the trust of the community and his personnel, he can be instrumental in the development and growth of a professional organization that prides itself on service, quality, and professionalism, which in turn results in a safer community.

A board member for the Hispanic Leadership Forum del Oeste, he lends a major hand in fundraising efforts that ultimately provide scholarships for college-bound students. He is also a board member of Community Bridges Inc., which provides a wide array of social and community needs.

Chief Rodriguez was a founding member of the West Valley Police Chiefs Association, and he is a member of the Arizona Association of Chiefs of Police, International Association of Chiefs of Police, Fraternal Order of Police, and the Latino Police Officers Association.



Daniel R. Rowe, AIA, LEED AP
TreanorHL
Kansas City, Missouri

Dan Rowe has dedicated his architectural career at TreanorHL to the programming and design of jails and juvenile and court facilities, leading the design and completion of more than 70 projects of all sizes nation-

wide. With a hands-on client management style, he has championed a philosophy to reduce jail populations through programs and alternatives to detention, to make the court system a transparent institution of the people, and to make juvenile detention a place for restoration. He believes that the beauty of architecture must be in the plan and the process as well as the appearance of a building, and that in the end it is about how we shape the lives of people rather than the edifices left to the next generation.



J. Joseph Waters
Johnson County Manager's Office
Olathe, Kansas

Joe Waters joined the County Manager's Office in 2013 as bureau chief and in 2015 became assistant county manager responsible for general government services. Mr. Waters previously served as the county's

director of facilities for 19 years.

An architecture graduate from the University of Kansas, Mr. Waters has a decade of private sector executive experience in consulting and facilities management nationwide. His extensive public service began in 1982–86 as an architect and assistant director in the Facilities Planning Office at the University of Kansas. Mr. Waters served Johnson County as director of facilities for two periods beginning in 1990. He left for a director position at Raytheon Inc. in 1995, returning to the county in 1998.

He has served on numerous community boards, including Sunflower House Child Abuse Prevention Center, Olathe Economic Development Corp., and the Arts Council of Johnson County, as well as committee and special projects work with the Mid-America Regional Council, the American Institute of Architects, the Public Technology Institute, and the National Association of Counties.

Jury comments

The view from the chair

We began this jury process with a discussion about value. Before we looked at any projects we talked about a desire, with each submission, to look beneath the surface and to understand its essential significance—operationally, programmatically, aesthetically, architecturally.

We also talked about comparisons between project types—law enforcement versus courts versus correction/detention facilities, for example. In the end we didn't need to concern ourselves with any of those dynamics as we quickly realized that, with only a couple of exceptions, we would be focusing our session, and our discussions, solely on courts projects.

This year there were 17 total submissions—a number that equaled the quantity of awarded projects just three years ago. The jury spent some time talking about why there might be a decline in numbers. We did not think it was due to a lack of quality work. Might it be, we wondered aloud, a product of the submission requirements or one of cost, both for registration and the time it takes to put an appropriately comprehensive package together? Did the need for a separate submittal related to sustainable practices play a role, or was it simply the perceived value of an AAJ JFR award itself?

Records confirm that the number of JFR submissions has decreased over the past decade. As the number of submissions has decreased, so too has the number of projects receiving awards, which in turn has reduced the size and magnitude of the JFR itself. Given our desire to better understand the complexities surrounding the decision-making process, we talked about our hope for a follow-up survey that could be used to dig more deeply into the questions and to provide greater clarity, if not the tools, needed to stem the current trend.

As we discussed projects, our perception of relative strengths and weakness, stated goals and whether those goals were still visible in the final outcome, one topic always circled around the conversations. We continually discussed, in its many forms, aspects of sustainability. Should it be viewed as part of a fully integrated whole or as a separate thing? Is a second, distinct submittal necessary? The spectrum was covered. We expected each project to embrace the process holistically—design and execution as well as the long-term implications. We're certainly interested in the broader impact of our work and practices, but as one juror commented, "this is not a separate thing, it's the way we do business now." The jury, as they say, is still out.

For the record, the jury was unanimous in its selection of the two citation projects. We felt they stood out as exemplary. Further, we hope they say something provocative, potentially even profound, about what it means to do exceptional work regardless of building type or situational particulars.

Mark Ryan, AIA
2016 Jury Chair

Citations







United States Courthouse Austin, Texas

Jury's statement

The jury found this project to be a finely crafted instrument, unapologetically modern, appropriately conveying the dignity of the institution. The connection to the heavily used public plaza is so important, and the building entry and lobby serve very effectively as extensions and enhancements to the public space. Clearly a mature expression, this reinterpretation of the judiciary manifests itself as grounded in its place, simultaneously exuberant yet modest, even restrained, spatially and functionally complex, subtle and consummately graceful in its detail, thorough and fittingly attentive throughout. The well-proportioned, asymmetrical courtrooms seem to rest comfortably balanced between formality and wit. Much of the richness seems to be communicated directly through the well-choreographed palette of materials that expresses appropriateness and longevity through fine workmanship—an exemplary project in every aspect.



Architect's statement

The United States Courthouse, Austin, Texas, is distinguished by its relationship to Republic Square Park and San Antonio Plaza, bringing together federal, state (the park), and city (San Antonio Plaza) entities into a happily compatible coexistence in downtown Austin. The closing of San Antonio Street and the creation of the plaza effectively link the courthouse and the park as a single rectilinear block. Events in the park and on and around the plaza spill onto the courthouse steps and plinth and occasionally into the event space on the first level of the courthouse.

Just as the cojoining of the plaza, park, and courthouse creates new opportunities for outdoor public events, the cojoining, internally, of the main entry lobby and the jury assembly space, through the vehicle of the Austin Wall, creates an opportunity for public gatherings in the courthouse, where originally there was no program area assigned to such events. The judiciary envisions celebrations after special proceedings and other courts-initiated events, as well as events hosted at the invitation of the courts. These events may extend into the jury assembly garden as well as the elevator lobby and secure garden to the west.

Unlike most contemporary federal courthouses, the Austin courthouse features windows, views, and daylight in every courtroom and public space in the building.

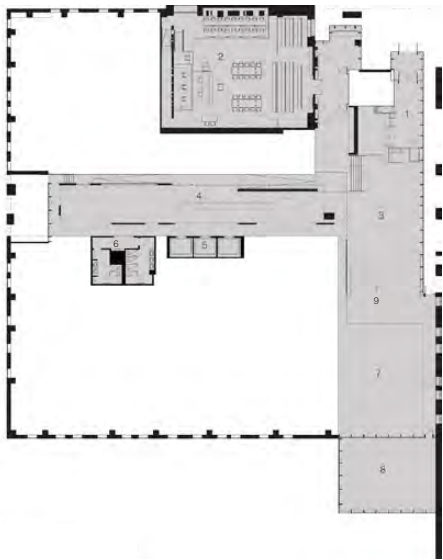
The courthouse is also distinguished by the configuration of its native limestone exterior cladding. Standard and economical limestone units are installed in horizontal and randomly canted rows, presenting the back or sawn face of the limestone to the public and the more popular rough face turned inward, hidden from view. The installation sets up an active pattern of shade and shadow throughout the day.



Plan Legend

Entry Level

- 1 Entry
- 2 Special Proceedings Courtroom
- 3 Lobby 4 Elevator Lobby
- 6 Restrooms
- 7 Jury Assembly
- 8 Jury Garden
- 9 The Austin Wall



Composite Levels 6 and 7

- 1 District Courtroom (Level 7)
- 2 Courtroom Lobby
- 3 Magistrate Courtroom (Level 7)
- 4 Attorney/Witness Conference Rooms
- 6 Restrooms
- 7 Courtroom Lobby (Level 6)
- 8 District Courtroom
- 9 Magistrate Courtroom (Level 6)





Jury assembly beyond *The Austin Wall*, by artist Clifford Ross.

Owner

U.S. General Services
Administration

Data

Type of facility
Court

Type of construction
New

Site area
3.77,231.99 SF

Acres
1.773

Area of building
New/Renovated/Total SF
252,000/0/252,000
New/Renovated/Total NAA
118,548 SF/0/118,548 SF

Construction costs
Actual
Site development cost: \$4,000,000
Building cost: \$105,000,000
Total construction cost:
\$109,000,000
Building cost/GSF: \$711.35

Project delivery type
Construction manager as general
contractor

Funding
Congressional appropriation

Status of project
Completed August 2015

Capacity
Service population: 233
Number of courts: 8
Type of courts: 4 district courts,
3 magistrate courts, 1 special
proceeding court, 1 grand jury space

Credits

Architect of record
Mack Scogin Merrill Elam Architects
Atlanta

MEP, civil, and fire protection
engineers
PageSouthernlandPage

Structural engineer
Architectural Engineers
Collaborative

Blast consultant
Hinman Consulting Engineers

Landscape consultant
Hargreaves Associates

Interior designer
Mack Scogin Merrill Elam Architects

Lighting consultant
LAM Partners

Acoustical consultant
Shen Milson & Wilke

Sustainability consultant
Center for Maximum Potential
Building Systems

Security consultant
Kroll Security Services Group

Life safety consultant
Rolf Jensen Associates

Curtainwall consultant
Curtainwall Design Consultants

Artist
Clifford Ross Studio, LCC



Cedar Rapids U.S. Courthouse

Jury's statement

The jury appreciated the basic themes of clarity and simplicity in this project, which presents itself as a straightforward gesture of a building in a park, nestled along the river, as well as a significant element within the context of this city. One juror noted that the “gentle sweep of the building toward the river is as if the river created the shape—it really is a pleasure to study this solution on this site.”

We were taken by the presentation, the ability to walk through a process and a progression. From the basic parti, to the entry/movement sequence, to the thoughtful articulation of public circulation—pulled slightly away from the courts’ threshold wall allowing for the dramatic spilling of light from above—to the courtroom layouts, and the central atrium void, glazed and on axis with a city street provides a sense of transparency, both actual and implied, on approach or from the city. The jury found this project to be laudable: “One of my favorites; architecturally, diagrammatically, all of it.”



Architect's statement

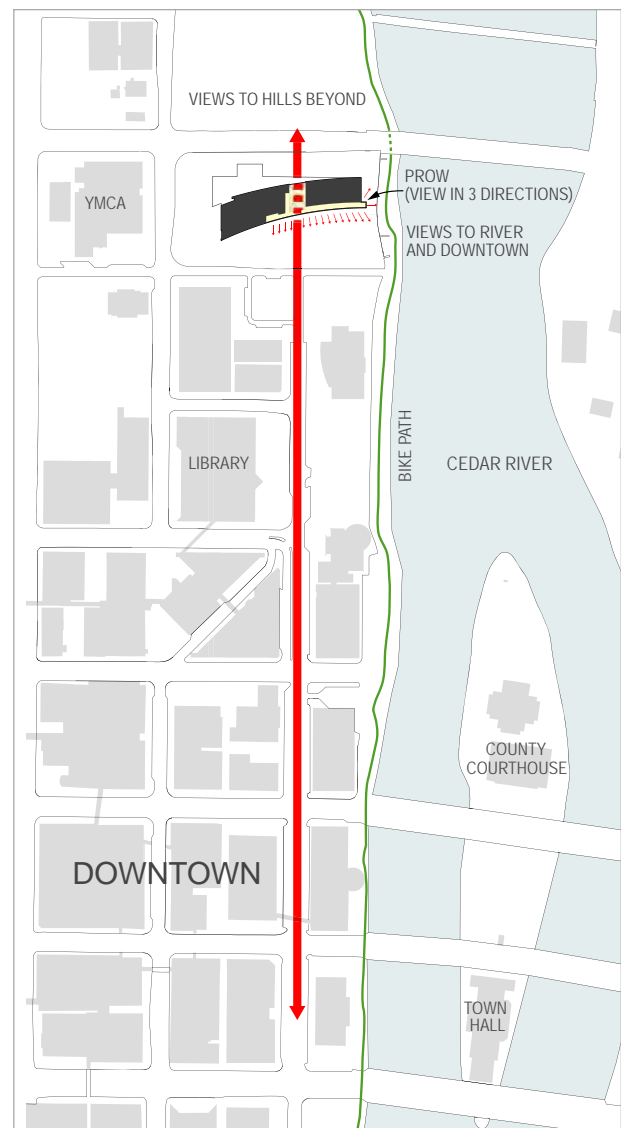
A courthouse must simultaneously respond to the needs of individual petitioners and address broad societal issues. It must convey authority, but still connect to its community as the source of that authority. Its processes must be transparent and open to all citizens in our democratic society.

The new U.S. Courthouse (290,000 gsf) for the Northern District of Iowa strives to meet these high aims in a welcoming, day-light-infused building. A highly collaborative process—with all judges participating—created strong allegiance to the fundamental ideas of the project, allowing them to weather the challenges of the design process. The project is a model for design rigor that also balances budget control and successful delivery. The project finished on-time and on-budget.

The courthouse is located prominently in downtown Cedar Rapids, Iowa. District, magistrate, and bankruptcy courts, as well as appellate court judges' chambers and ancillary facilities are provided. The courthouse expresses a democratic spirit of openness and approachability through two organizing principles:

1. Justice on display: Entrances to all courtrooms are visible to the public at street level.
2. Windows in every courtroom: This is the first recently constructed federal courthouse with windows on two sides of every district, magistrate, and bankruptcy courtroom.

This courthouse aims to contribute to the evolution of a proud building type in American culture. It serves as a model for unobtrusively integrating security on the site and upon entry. It directly addresses the challenge of bringing daylight to courtrooms while maintaining secure circulation paths. And it responds to the increasing size and scale of federal buildings with a design that is both recognizably civic and contemporary.





Owner

United States General Services
Administration

Data

Type of facility
Court

Type of construction
New

Site area
156,816 SF

Acres
3.6

Area of building
New/Renovated/Total SF
305,999 GSF/0/305,999 GSF
New/Renovated/Total NAA
275,767/0/275,767

Construction Costs
\$160,000,000

Project delivery type
CM as contractor

Funding
Congressional appropriation

Status of project
Completed 2012

Capacity
Service population: 1,326,407
Number of courts: 5
Type of courts: Criminal/high
security/civil

Credits

Design architect
William Rawn Associates,
Architects, Inc.
Boston

Architect of record
OPN Architects Inc.
Cedar Rapids, Iowa

Structural engineer
LeMessurier Consultants

MEP/FP engineer
KJWW Engineering Consultants

Civil engineer
Ament Inc.

Programmer
CGL/RicciGreene

Code
Code Consultants, Inc.

Acoustical/AV
Acentech

Landscape architect
Michael Van Valkenburgh
Associates, Inc.

Lighting
Horton Lees Brogden Lighting
Design

Door hardware
SFS Architecture

Security
LTS Security Engineers

Telecommunications
Smith & Boucher Engineers

Façade security engineer
Hinman Consulting Engineers

Façade consultant
Heitmann & Associates, Inc.

Environmental consultant
The Weidt Group

Signage
Environmental Graphic Design

Contractor
Ryan Companies US, Inc.

Photography
©Robert Benson Photography
©Wayne Johnson, Main Street
Studios

Court facilities

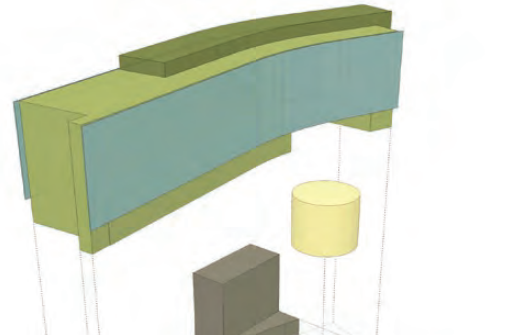




Dennis Maes Pueblo Judicial Building

Jury's statement

The use of metaphor and the overall facility planning captured the jury's attention. The kiva/rotunda was clearly the aspect of the project that stood out in both idea and execution—it is the true heart of this project.



Architect's statement

The design of the Dennis Maes Pueblo Judicial Building proceeded with two aims: first, to create architecture that celebrates the idea of being a citizen of Pueblo County, Colorado, and ties the building not only to its place in time but also to the layers of history and culture unique to Pueblo, and second, to recognize in the architectural expression the dignity and honor appropriate to a courthouse, allowing the function of the building to speak on its own.

With these ends in mind, the design team delved deeply into ideas of regional materials, imagery, and culture, while also recognizing that these elements required reconciliation with the language of classical architecture—that of a vertical vocabulary organized in the classical formula of base, middle, and top. The clarity of the elevations call attention to the

seriousness of what this building represents, connecting it to the long line of classical civic architecture that has gone before and setting it apart from the more superficial aspects of day-to-day commercial architecture.

The rotunda is the centerpiece of this facility, acknowledging the kiva form of the Pueblo Indian culture as a unique precedent. The rotunda plays an important part in the building's exterior expression as well as its interior organization. After visitors pass security screening, they enter this multistory space with ample room for gathering before accessing the upper levels of the courthouse. Electronic docket monitors in the rotunda direct visitors to the appropriate floor. Potential jurors access the jury assembly room off of the rotunda. A monumental stair leads from the rotunda to the second floor. The upper floors of the courthouse use the rotunda as a referential space providing daylight and views to the city beyond.



Owner

State of Colorado Judicial Branch

Data

Type of facility
Courts

Type of construction
New

Site area
195,094 GSF

Acres
4.5

Area of building
New/Renovated/Total SF
176,842/0/176,842 SF

New/Renovated/Total NAA
113,028/0/113,028 SF

Construction costs
Actual
Site development cost: \$1,269,076
Building cost: \$53,580,285
Total construction cost:
\$54,849,361
Building cost/GSF: \$302.98

Project delivery type
CM at risk

Funding
General funding

Status of project
Completed 2014

Capacity
Service population: 161,451
Number of courts: 17
Type of courts: Criminal/high security, civil, magistrate

Credits

Architect
DLR Group

Civil engineer
Short Elliot Hendrickson, Inc.

Structural engineer
MGA Structural Engineers, Inc.

MEP engineer
RMH Group

Landscape architect
Design Collaborative, Inc.

Security, IT, and courtroom technology
Technology Plus

Contractor
Houston Construction

Photography
Ed LaCasse Photography

Judge Seymour Gelber and Judge William E. Gladstone Miami-Dade Children's Courthouse

Jury's statement

Many members of the jury responded to the playfulness and placement of materials, as well as the canted wall that provides additional space for public waiting areas.



Architect's statement

The Miami-Dade Children's Courthouse is a landmark building combining juvenile and family courts in a nontraditional and welcoming environment. Designed to minimize stress for children and families, the 14-story building includes 18 courtrooms and 16 supporting agencies; making it easy for families to access key services in one central location.

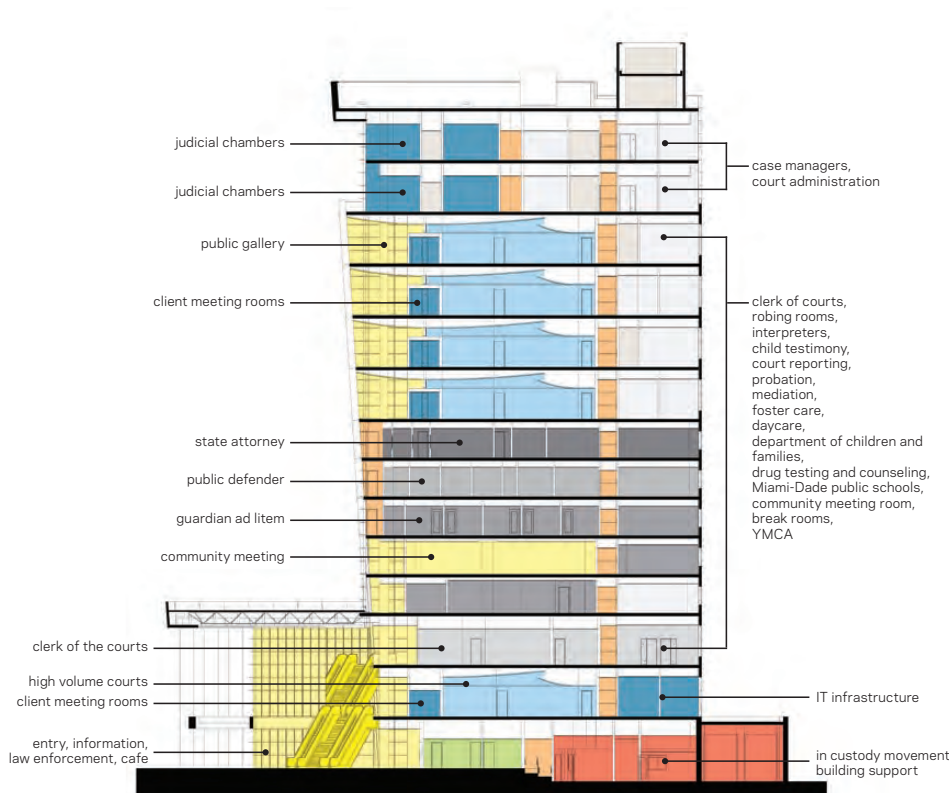
The building is thoughtfully designed to enable an effective justice process for all participants. Agile courtrooms and related technology accommodate multiple case types and requirements; while collocation of staff and judiciary allows for collaborative team work. Five floors are designated as flexible space, readily accommodating changing departmental and partner organization needs. Three floors offer children and families stress-reducing centralized storefront locations for support agencies. High-volume public traffic spaces are conveniently located on lower floors for ease of community access. Visually inviting and easy to navigate, these spaces engage participants while evoking the civic importance and openness of the justice process.

Sustainability is integral throughout the building, with an emphasis on passive siting and façade strategies to mitigate tropical sun

and weather. In addition, local materials and techniques have been extensively used for financial sustainability.

Artwork is a key feature throughout public areas, evoking the spirit and energy of children, families, and the community. This approach is mirrored in the courthouse's main civic façade, with its confetti of vibrant colored glass windows casting playful sunlit patterns into public areas inside.

Close to a key government precinct and major public transit hub, the entire site has been designed for civic use. A new courthouse plaza extends the character of an adjacent park onto the site and is designed for all to enjoy. The building's exterior character juxtaposes judicial composure with animated cadence; a fitting portrait of both justice and the children and families being served.



Owner

Miami-Dade County

Data

Type of facility
Court

Type of construction
New

Site area
3.38 acres

Area of building
New/Renovated/Total SF
371,500 SF/0/371,500 SF

New/Renovated/Total NAA
227,000 SF/0/227,000 SF

Construction costs

Actual
Site development cost: \$3.3M
Building cost: \$90.5M
Total construction cost: \$93.8M
Building cost/GSF: \$254/GSF

Project delivery type
Design-bid-build

Funding
General funds

Status of project
Completed 2015

Capacity
Service population: 2,402,208
Number of courts: 18
Type of courts: Juvenile: 2 high-volume-juvenile delinquency, 4 juvenile delinquency, 8 juvenile dependency, 4 general purpose.

Credits

Architect
HOK Architects Corporation
Tampa, Florida

Associate architect
Perez & Perez Architects Planners, Inc.
Miami

Structural engineer
Bliss & Nyitray, Inc.

Mechanical engineer
SDM Consulting Engineers, Inc.

Electrical engineer
TLC Engineering for Architecture, Inc.

Civil engineer
EAC Consulting, Inc.

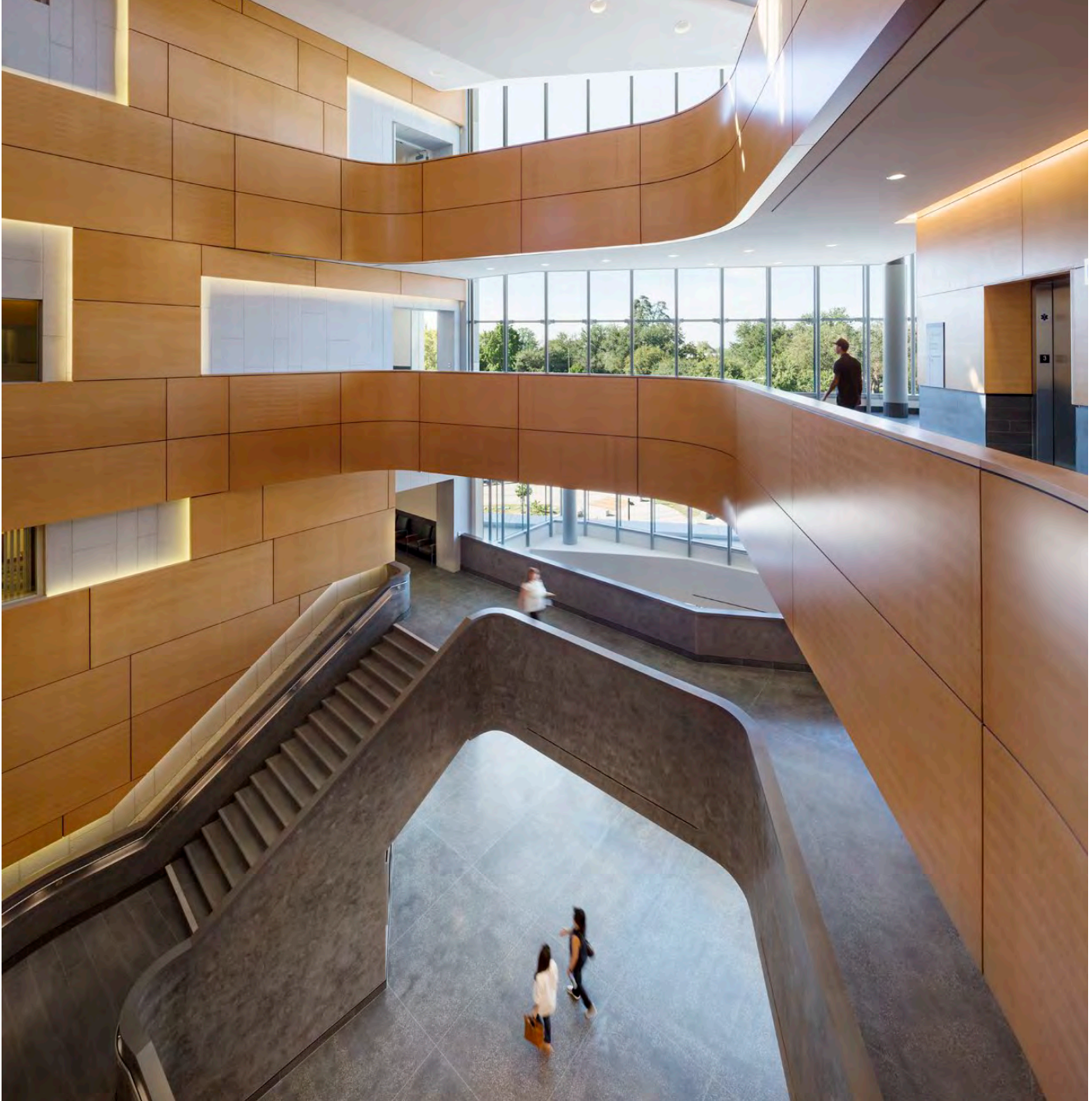
Landscape architecture
Curtis + Rogers Design Studio Inc.

Cost estimating
Faithful + Gould

Madera County Courthouse

Jury's statement

The jury spent quite a bit of time discussing the perceived civic/judicial expression of this project and its response of colliding forms and materials. In the end we were interested in the translation from the big idea and its distillation through details.



Architect's statement

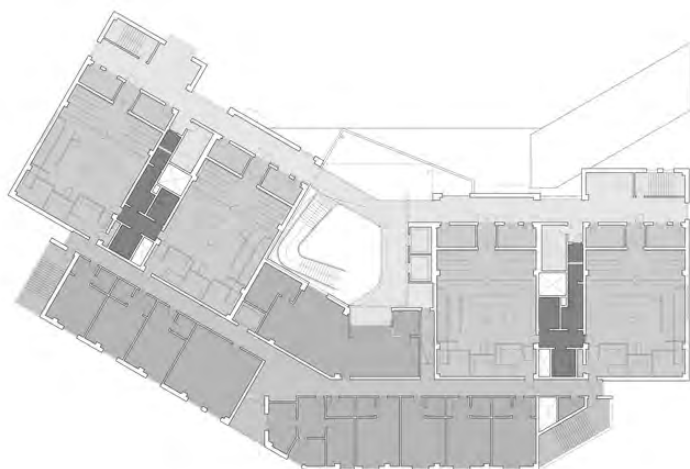
The new \$100 million, 111,000-square-foot Madera County Courthouse was designed to demonstrate the transparency and dignity of democracy and provide a place to facilitate the workings of the American ideals of justice. It has been positioned on the site to work with the existing Historic Courthouse and Courthouse Park to create a "town square."

Oriented toward true north, the monumental public façade reveals itself toward the park and the greater downtown area. The transparency in the design of the north-facing elevation welcomes the public and provides a visual connectivity from the outside to the inside. There is a procession and hierarchy in

the design of the public flow transitioning from the informal to the formal experience.

The new courthouse is a four-story, steel-framed structure featuring 10 courtrooms and 10 judicial chambers with clerical support; administration, jury services; traffic, civil, family, juvenile, and criminal divisions; prisoner holding and subterranean parking for judges and key courts personnel; and in-custody vehicle accommodations for the County Sheriff and California Department of Corrections. The design conveys the image of a courthouse and reflects the dignity of the public in an approachable way.

The new courthouse has received LEED Silver Certification.



Owner

State of California Administrative
Office of the Courts

California Court of Appeal, Fifth
District

Madera Superior Court

Data

Type of facility
Court

Type of construction
New

Site area
127,735 SF

Acres
2.93

Area of building
New/Renovated/Total GSF
123,110 GSF/0/123,110 GSF
(building/sally port only)
New/Renovated/Total NAA
62,107/0/62,107 NAA

Construction costs

Estimated
Site development cost: \$5,448,204
Building cost: \$60,829,416
Total construction cost:
\$66,237,620
Building cost/GSF: \$494

Project delivery type
CM at risk

Funding
General funding

Status of project
Completed 2015

Capacity
Service population: 63,105 (in 2013)
Number of courts: 10
Type of courts: Criminal, traffic,
juvenile/family support/civil/family
law

Credits

Architect
AC Martin
Los Angeles

Structural engineer
Brandow & Johnston

MEP engineer
Glumac

Civil engineer
Blair, Church, & Flynn

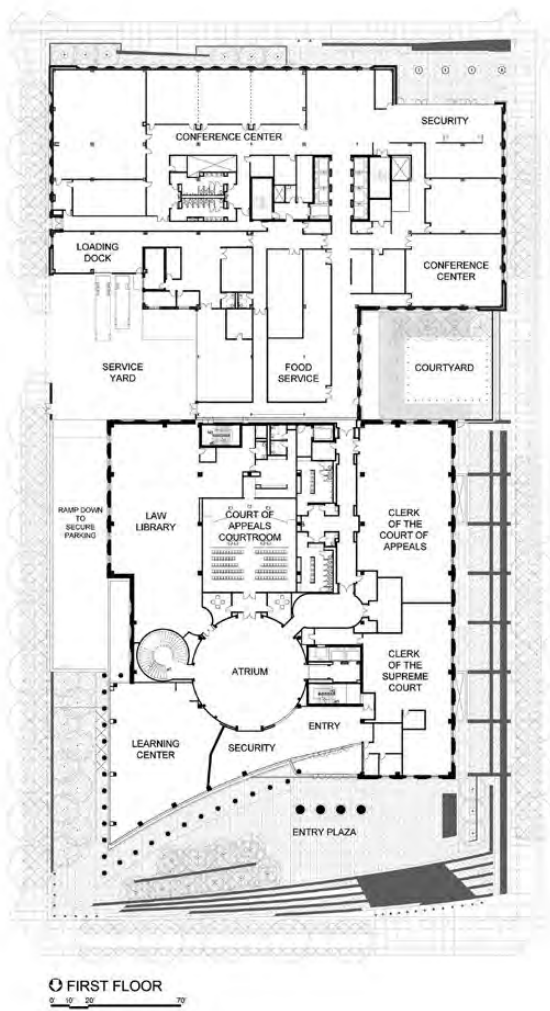
Contractor
Gilbane Building Company

(continued on page 32)

Ralph L. Carr Colorado Judicial Center

Jury's statement

This project sparked some of the liveliest conversation of the day. Some jury members thought the project expressed a feeling of strength without being imposing; others wondered what it said about this time and this place; while others simply viewed it as their favorite project.



Architect's statement

Home to the Colorado Supreme Court and State Court of Appeals, the Ralph L. Carr Colorado Judicial Center is sited along the perimeter of Denver's historic Civic Center Park and next door to the Colorado State Capitol. Designed to create a more efficient state judicial system, the 678,800-square-foot building consolidates the associated offices of the Courts Administrator, Public Defender, and Colorado Attorney General.

The Ralph L. Carr Colorado Judicial Center is clad in granite, architectural precast concrete, high-efficiency glazing, and metal, and is designed for a 100-year lifespan. The neoclassical four-story courthouse includes two courtrooms for the Court of Appeals, a courtroom for the Colorado Supreme Court, the Colorado Supreme Court Library, and an educational civics learning center. Complementary to the adjacent state capitol building, the courthouse's exterior design features granite columns and a grand public entry that reflects the significance of the decisions made inside. A twelve-story office building crafted from high-quality architectural precast

concrete panels sits behind the courts podium, complete with sympathetic detailing and architectural references to the courthouse.

A large glass entryway welcomes visitors and symbolizes the transparency of government. Inside, a four-story atrium draws the eye up to the entrances of the three appellate courtrooms. On the ground floor, the educational civics learning center provides an interactive experience with exhibits and hands-on activities that enlighten both young and old to the inner workings of the judiciary. Above the first floor, the atrium opens up on one side to reveal a dramatic view of the state capitol, reinforcing the checks and balance relationship among the judicial, executive, and legislative branches of government.

The LEED Gold judicial center is one of the most sustainable courthouse complexes in the United States and makes substantial use of durable and recycled materials while remaining 30 percent more energy efficient than standards demand.

Owner

CHS/CJC Building, Inc.

Data

Type of facility
Multiuse/other

Type of construction
New

Site area
133,024 SF

Acres
3.05

Area of building
New/Renovated/Total SF
678,800/0/678,800 GSF

New/Renovated/Total NAA
630,650/0/630,650 GSF

Construction costs

Actual
Site development cost: \$10,026,728
Building cost: \$86,229,864
(courthouse), \$104,227,975 (state
judicial office building)
Total construction cost:
\$200,534,567
Building cost/GSF: \$280 GSF

Project delivery type
CM at risk

Funding
Public bond issue

Status of project
Completed 2012

Capacity
Service population: 5,355,866
Number of courts: 3
Type of courts: Supreme Court (1),
appellate courtrooms (2)

Credits

Architect
Fentress Architects
Denver

Owner representative
Trammell Crow Denver
Development, Inc.

General contractor
Mortenson Construction

Civil and structural engineer
Martin/Martin Consulting Engineers

MEP engineer
ME Engineers, Inc.

Landscape architect
Civitas

Acoustical and low voltage systems
Shen Milsom & Wilke

(continued on page 32)



Sutter County Courthouse

Jury's statement

The use of diagrams and the story they told were important for this project. We noted its civic presence and shift from a serious exterior to a more relaxed public space and interior, especially the informality of the courtyard.



Architect's statement

This project forms the centerpiece of Yuba City's newly developing civic center neighborhood. The design is based on a simple, cross-shaped building plan that efficiently achieves three critical goals: (1) it provides four strong elevations in a neighborhood context that has no "front" or "back" sides, giving the courthouse a commanding regional presence; (2) it creates four intimate courtyards, spatial amenities for both staff and the visiting public; and (3) it evokes the shape and civic presence of Yuba City's historic courthouse, the building which the court is moving out of.

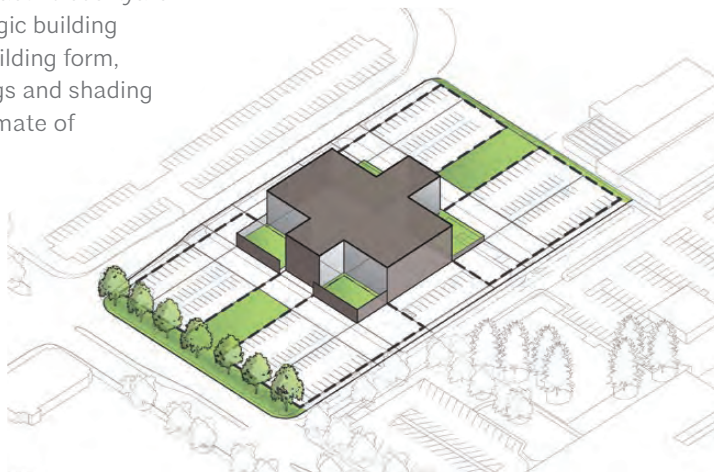
The limited palette of exterior materials includes a perimeter skin of dark textured porcelain tile, contrasted by a bright, crisp, smooth plaster at the courtyards. These courtyards appear "carved" out of the solid porcelain surround. The subtractive courtyard spaces—along with the strategic building orientation, a self-shading building form, and carefully placed overhangs and shading devices—mitigate the hot climate of California's Central Valley.

Throughout the project, landscaping provided a primary focus, softening the presence of the "building as object" and shifting the focus to the social and operational spaces that the building affords.

Through a strategic balancing act, the design of this project successfully optimizes courthouse operations while creating a powerful and dignified civic symbol for the Sutter County Courts.

Project summary:

1. Site: 4.1 acres
2. Size: 75,600 square feet, 3-stories above grade, one story below
3. Parking: 208 total staff and public spaces.
4. Courtrooms: Six with future expansion to eight.



Owner

Judicial Council of California

Data

Type of facility
Court

Type of construction
New

Site area
178,280 SF

Acres
4.1

Area of building
New/Renovated/Total SF
75,600/0/75,600 GSF
New/Renovated/Total NAA
45,991/0/45,991

Construction costs
Estimated
Site Development cost: \$3,900,000
Building cost: \$40,100,000
Total construction cost:
\$44,000,000
Building cost/GSF: \$530.50

Project delivery type
Design-bid-build

Funding
Public bond issue

Status of project
Completed 2016

Capacity
Service population: 95,850
Number of courts: 6 (with
expansion to 8)
Type of courts: Multipurpose

Credits

Architect
RossDrulisCusenbery
Architecture Inc.
Sonoma, California

Civil engineer
Northstar Engineers

MEP engineer
WSP Group (formerly Flack + Kurtz)

Structural engineer
Rutherford & Chekene

Acoustical/AV consultant
Charles M. Salter Associates, Inc.

Construction management
Kitchell

Cost estimator
AECOM (formerly Davis Langdon)

Elevator consultant
Syska & Hennessey Group

(continued on page 32)

Utah Courts—Ogden Second District Juvenile Courthouse

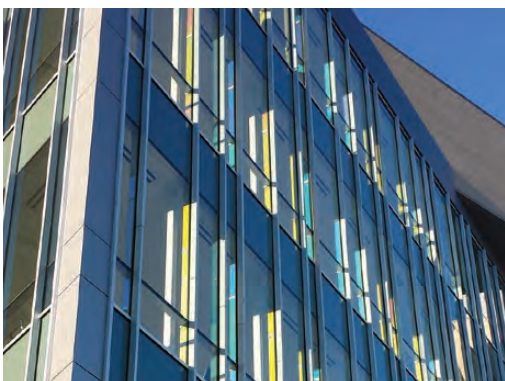
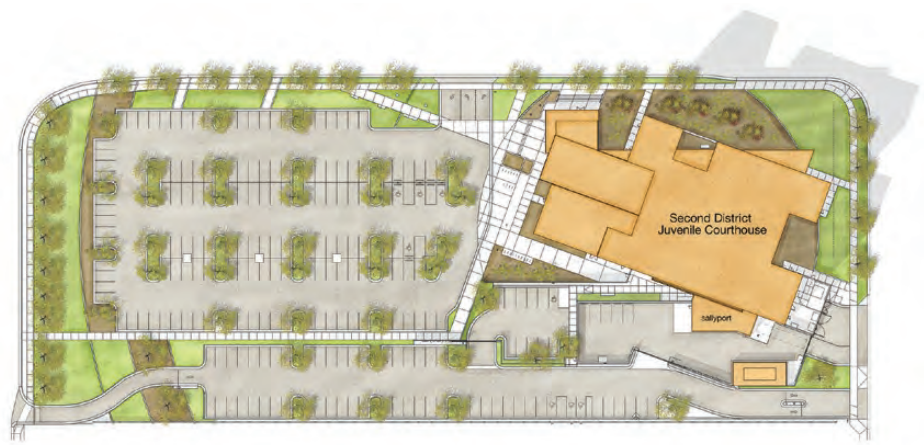
Jury's statement

The public experience was one of the things that stood out on this project. Sightlines and interior finishes were noted, but the real appeal came from the way the public space seemed to slice through the building on courts floors, creating pleasing spaces filled with daylight.



Architect’s statement

The project called for eight juvenile court-rooms, a mediation suite, probation offices, group holding as well as courtroom holding, and court administration. The location was predetermined to be on a half-block site in a redevelopment area of downtown Ogden. The program and budget allocated 85,000 square feet for the facility. Parking requirements for 75 staff stalls and 150 public stalls were required. Massing and proportion were not defined.



Owner	Status of project
Utah Courts	Completed 2015
Data	Capacity
Type of facility	Service population: 40,500
Court	Number of courts: 6 finished, 2 shelled
Type of construction	Type of courts: juvenile
New	Credits
Site area	Architect
184,749 SF	VCBO Architecture
Acres	Salt Lake City
4.2	Civil engineer
Area of building	Great Basin Engineering
New/Renovated/Total SF	Structural engineer
88,207/0/88,207 SF	Reaveley Engineers
New/Renovated/Total NAA	Mechanical/Plumbing engineer
55,198/0/55,198	Colvin Engineering
Construction costs	Electrical engineer
Actual	Spectrum Engineering
Site development cost: \$2,675,537	Interior design
Building cost: \$27,239,970	VCBO Architecture
Total construction costs:	AV/IT
\$28,915,508	Spectrum Engineering
Building cost/GSF: \$297.48/GSF	
Project delivery type	
Design-bid-build	
Funding	
General funds	

Index of architects

AC Martin	
Madera County Courthouse.....	24
DLR Group	
Dennis Maes Pueblo Judicial Building	20
Fentress Architects	
Ralph L. Carr Colorado Judicial Center.....	26
HOK Architects Corporation	
Judge Seymour Gelber and Judge William E.	
Gladstone Miami-Dade Children’s Courthouse	22
Mack Scogin Merrill Elam Architects	
U.S. Courthouse, Austin, Texas.....	10
OPN Architects Inc.	
(architect of record)	
Cedar Rapids U.S. Courthouse.....	14
Perez & Perez Architects Planners Inc.	
(associate architect)	
Judge Seymour Gelber and Judge William E.	
Gladstone Miami-Dade Children’s Courthouse	22
RossDrulisCusenbery Architects Inc.	
Sutter County Courthouse	28
William Rawn Associates, Architects	
(design architect)	
Cedar Rapids U.S. Courthouse.....	14
VCBO Architects	
Utah Courts—Ogden Second District Juvenile Courthouse.....	30

Credits continued

(continued from page 25)	(continued from page 27)	(continued from page 29)	Owner representative
Landscape	Code consultant	Fire safety	Capital Program Operations &
Robert Boro Landscape Architect	BCER Engineering, Inc.	FireWise Consulting Ltd.	Programs Division, Judicial Council
Courts planner	Cost estimator	Jenson Hughes (formerly Rolf	of California
Vitetta Group, Inc.	Cumming	Jensen & Associates / Hughes	Security consultant
Acoustical	Food service	Associates)	Guidepost Solutions (formerly Safir
Veneklasen Associates	ricca newmark design	Sacramento Engineering	Rosetti)
Architectural lighting	Graphics	Consultants	Signage and way-finding designer
Francis Krahe & Associates	Tacito Design	The Fire Consultants	Square Peg Design
Elevators	Lighting design	General contractor	Specs and hardware
Lerch Bates Inc.	ME Engineers, Inc.	Swinerton Builders	DTR Consulting Inc.
Sustainable design/LEED	Sustainability consultant	Geotechnical engineer	Sustainability consultant
Brightworks	Ambient Energy	Langan Treadwell Rollo	Thornton Tomasetti (formerly
Signage/Graphics		(formerly Treadwell & Rollo)	Simon & Associates)
Selbert Perkins Design		Landscape architect	Waterproofing consultant
Collaborative		GLS Landscape	Simpson Gumpertz & Heger

Academy of Architecture for Justice

an **AIA** Knowledge Community



**The American
Institute
of Architects**

1735 New York Avenue, NW
Washington, DC 20006

aia.org

© 2016 American Institute of Architects