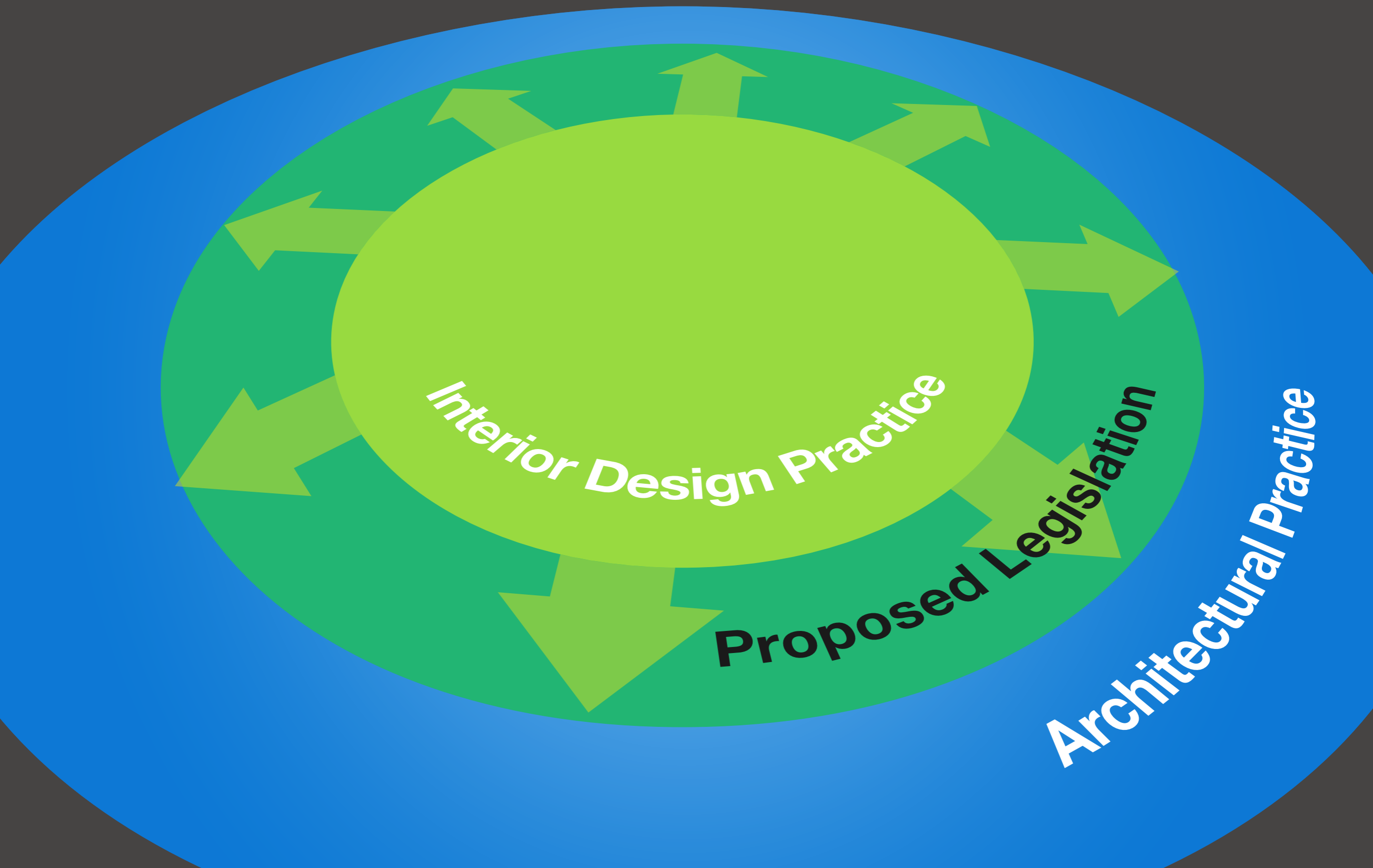




Architects Design Buildings, *Inside and Out.*

Scope Creep



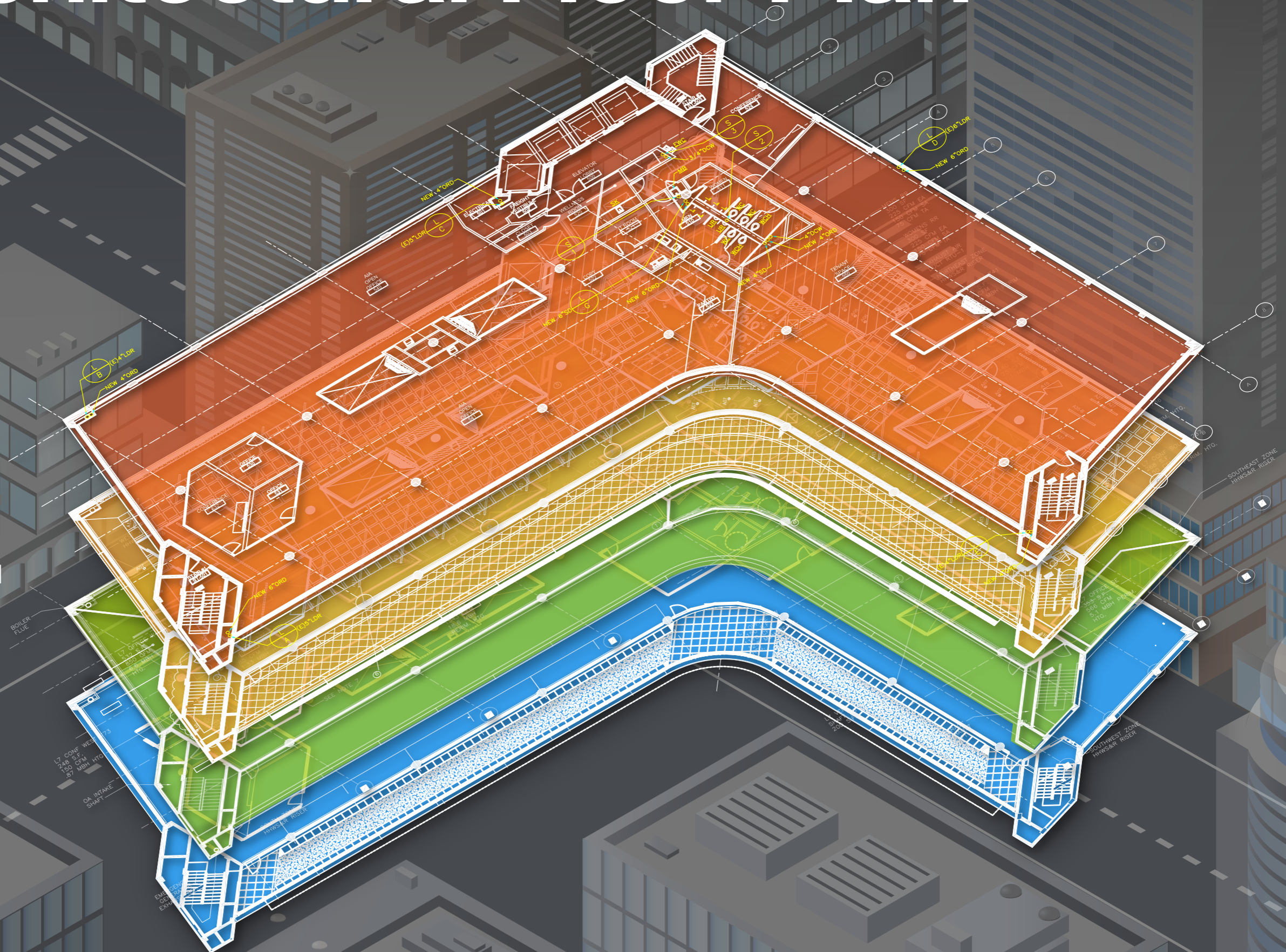
Architectural Floor Plan

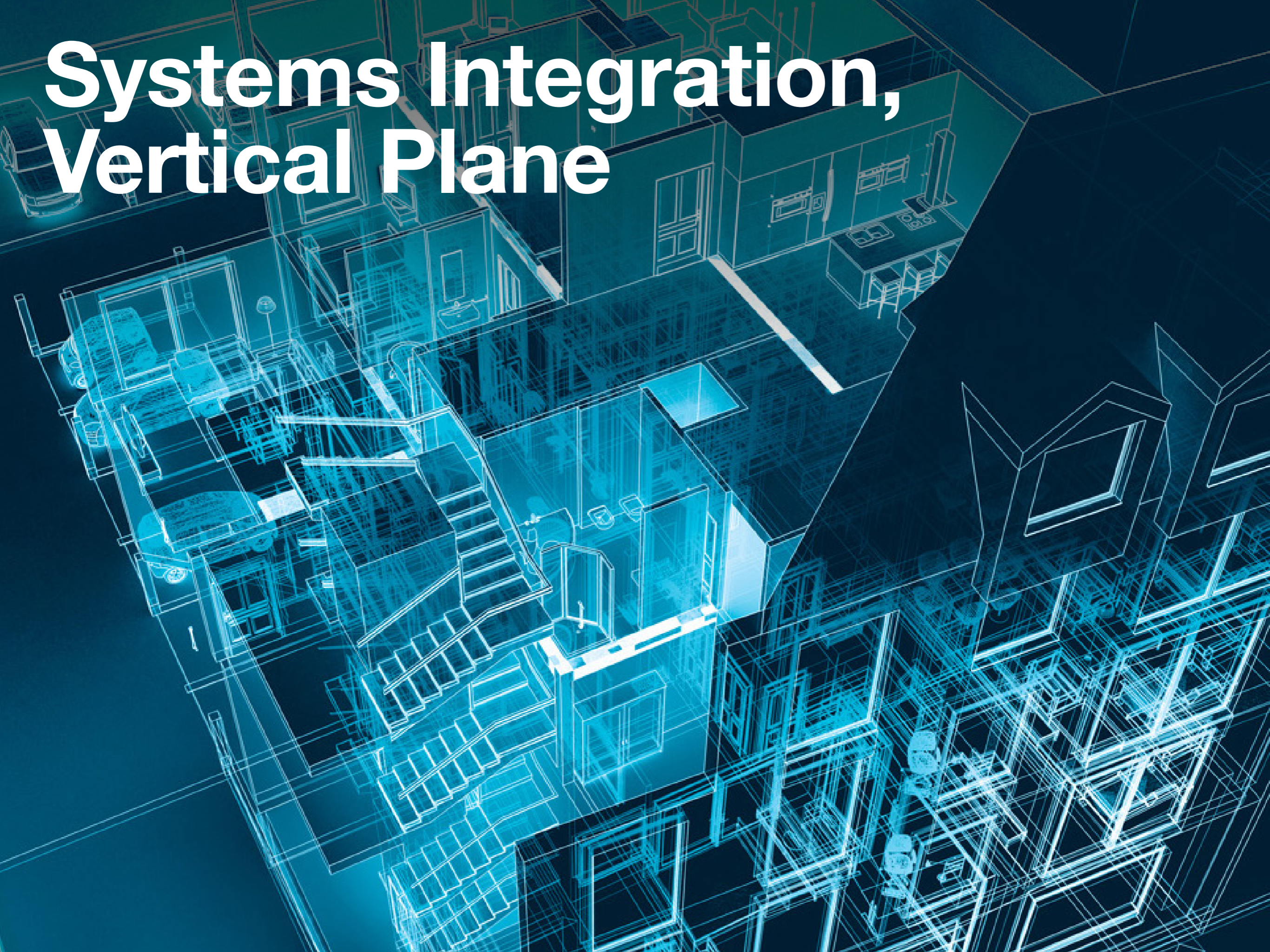
plumbing

electrical

mechanical

floor plan

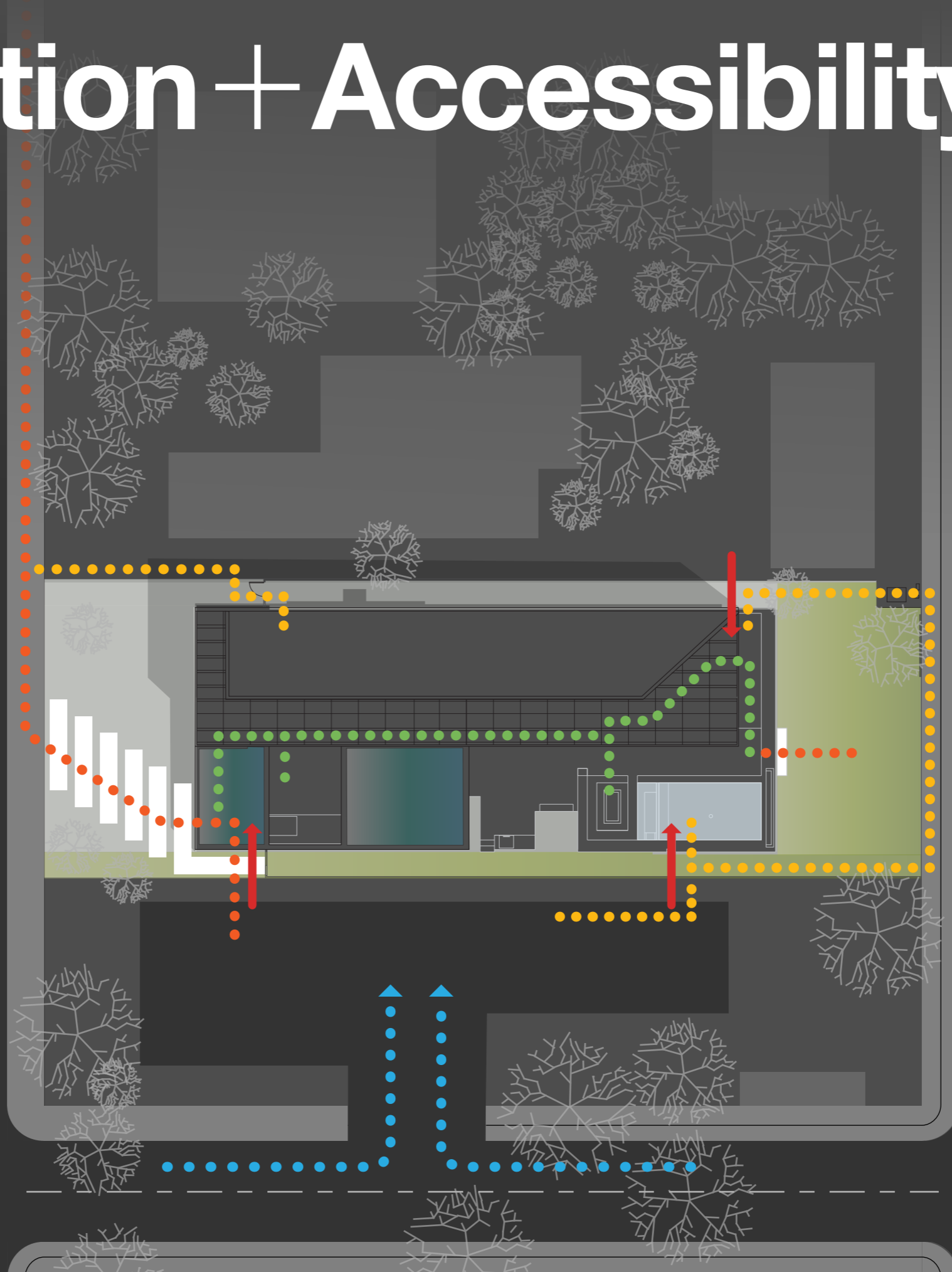




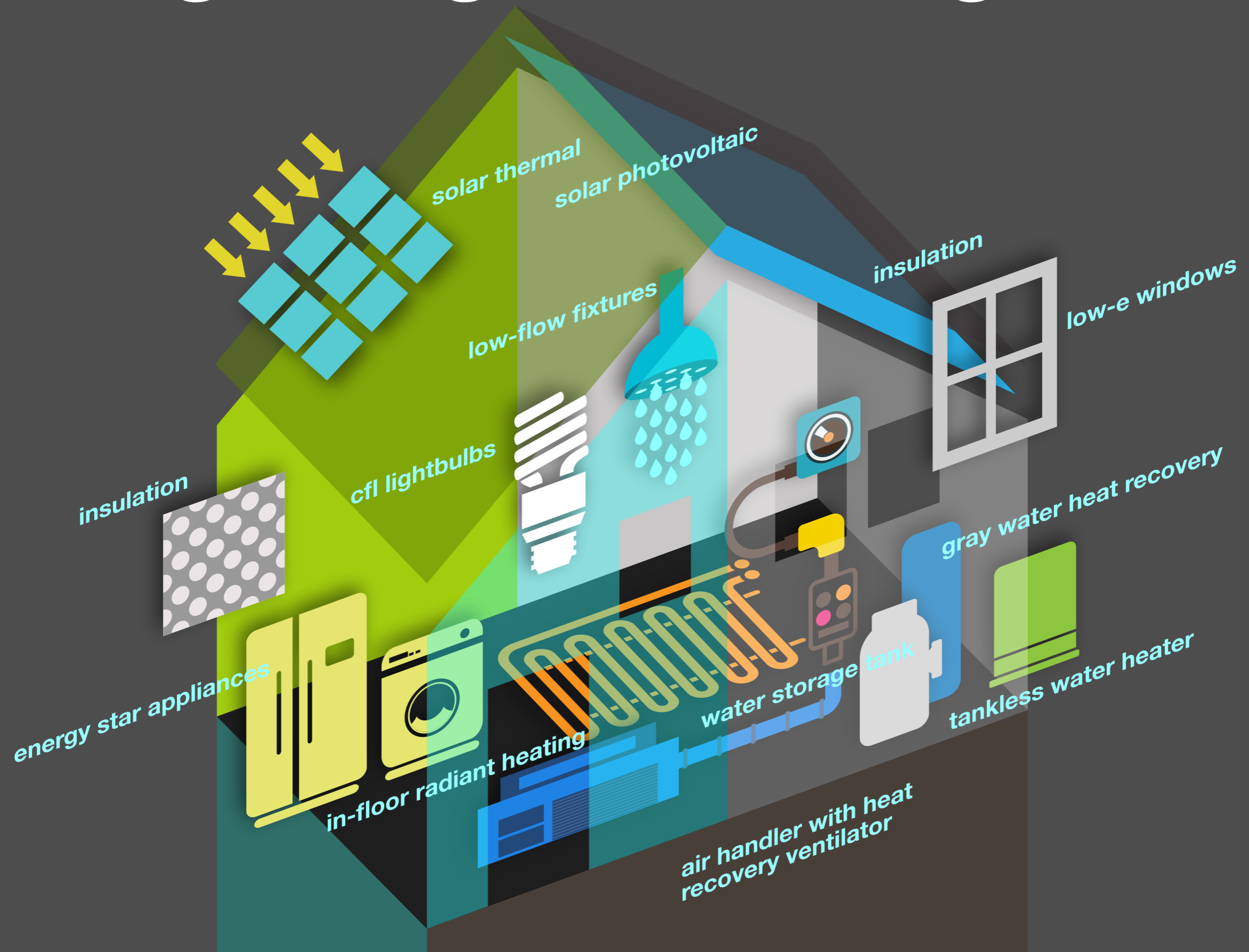
Systems Integration, Vertical Plane

Circulation + Accessibility

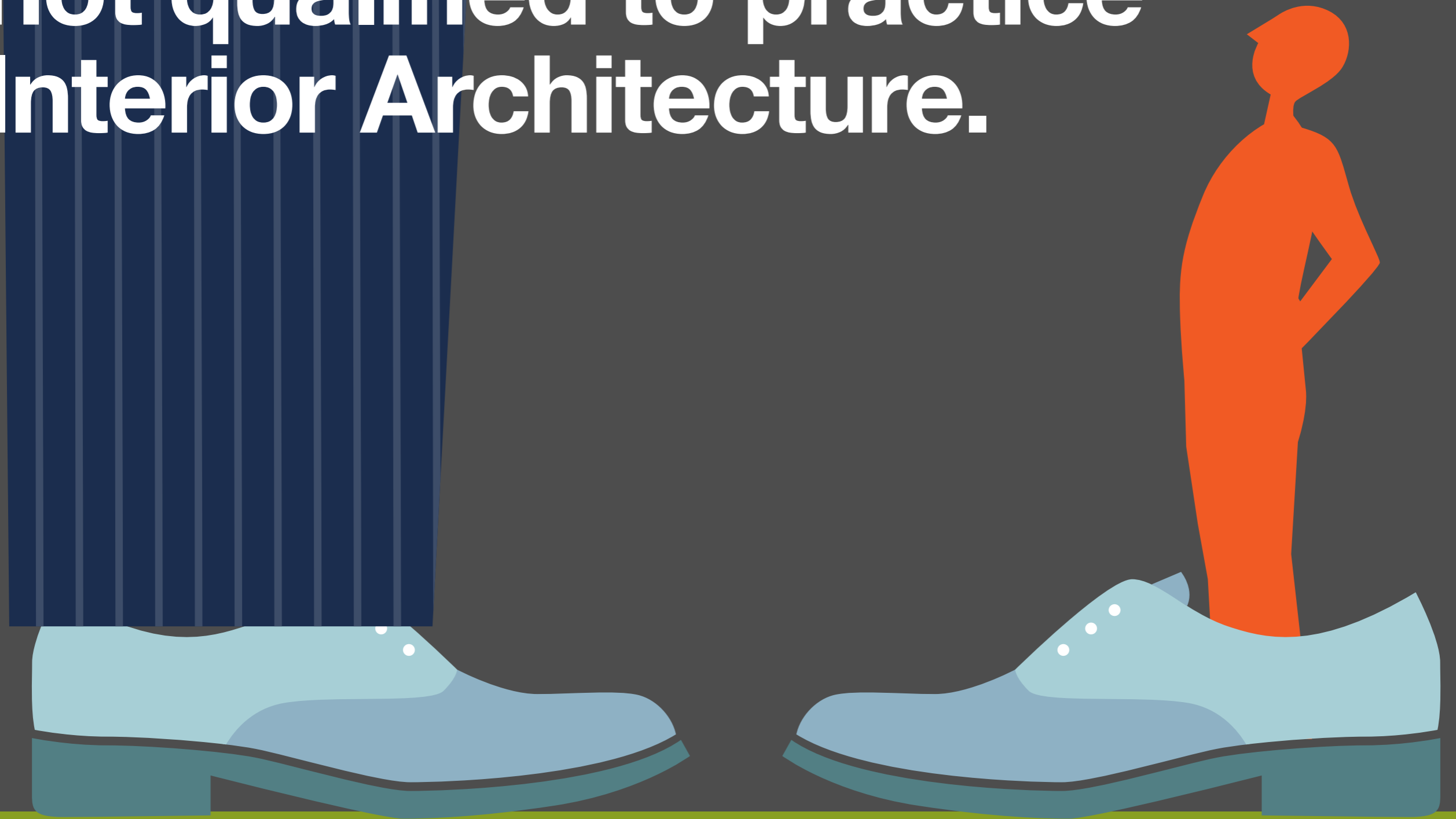
- traffic | parking
- service | staff
- pedestrian
- public access
- fire | emergency



Integrating Technologies



**Interior Designers are
not qualified to practice
Interior Architecture.**



Complexity of Interiors



Differences in Post-secondary Education



Differences in Experience: Quantity

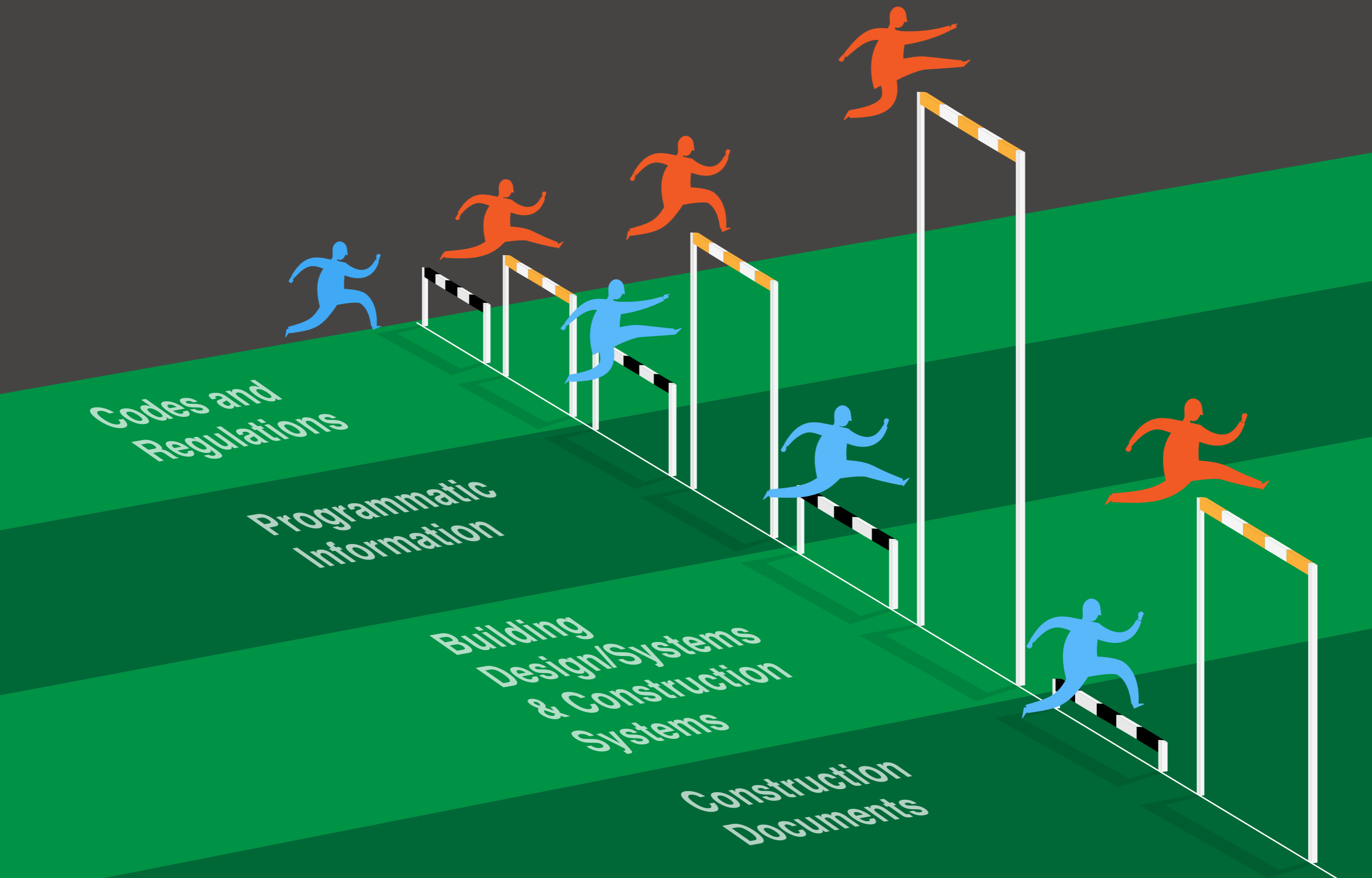


Differences in Experience: Quality

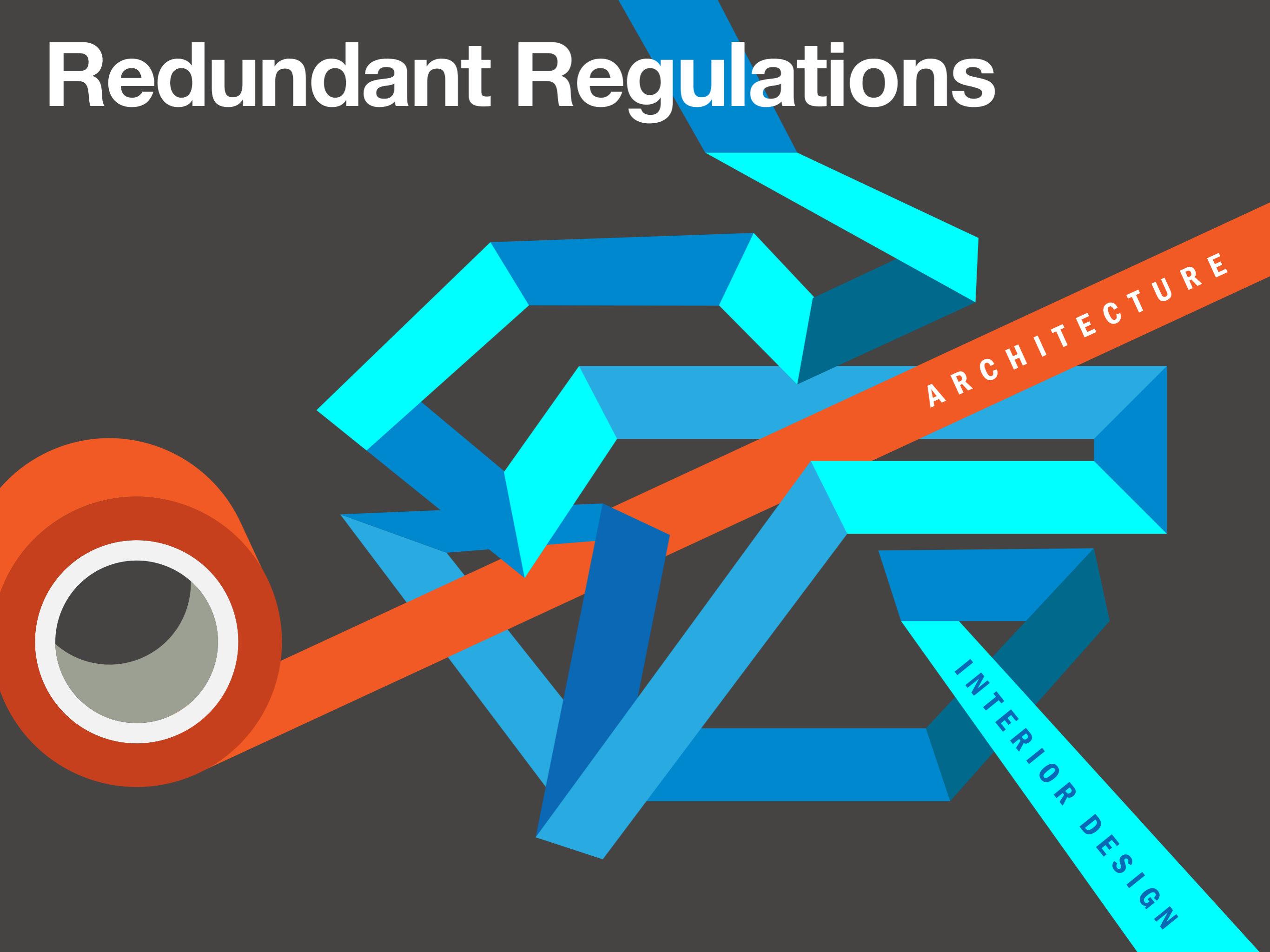
Programming
Site and Building Analysis
Project Cost & Feasibility Planning
Zoning Regulations Schematic Design
Engineering Systems Construction
Costs Codes and Regulations • Design
Development Construction Documents
Material Selection Specifications Building
Building & Contract Negotiation Construction
Construction Administration Construction
Phase: Observation General Pro
Project Management Business O
Operations Leadership and S
Service Program
Site and Building



Differences in Exams



Redundant Regulations



**Architects design buildings.
Buildings have interiors.
Architects design interiors.**

Developed by the
State & Local Government Relations
staff and volunteers,
The American Institute of Architects
1735 New York Avenue, NW
Washington, DC 20006

Design: Splice Design Group



**THE AMERICAN
INSTITUTE
OF ARCHITECTS**