



Architecture Billings Index (ABI)

December 2020

The Architecture Billings Index (ABI) is a diffusion index derived from the monthly Work-on-the-Boards survey, conducted by the AIA Economics & Market Research Group. The ABI serves as a leading economic indicator that leads nonresidential construction activity by approximately 9-12 months. The survey panel asks participants whether their billings increased, decreased, or stayed the same in the month that just ended. According to the proportion of respondents choosing each option, a score is generated, which represents an index value for each month. An index score of 50 represents no change in firm billings from the previous month, a score above 50 indicates an increase in firm billings from the previous month, and a score below 50 indicates a decline in firm billings from the previous month.

*All graphs represent data from December 2019–December 2020.

ABI

National Regional Sector Practice

National

Architecture firm billings backslide in December



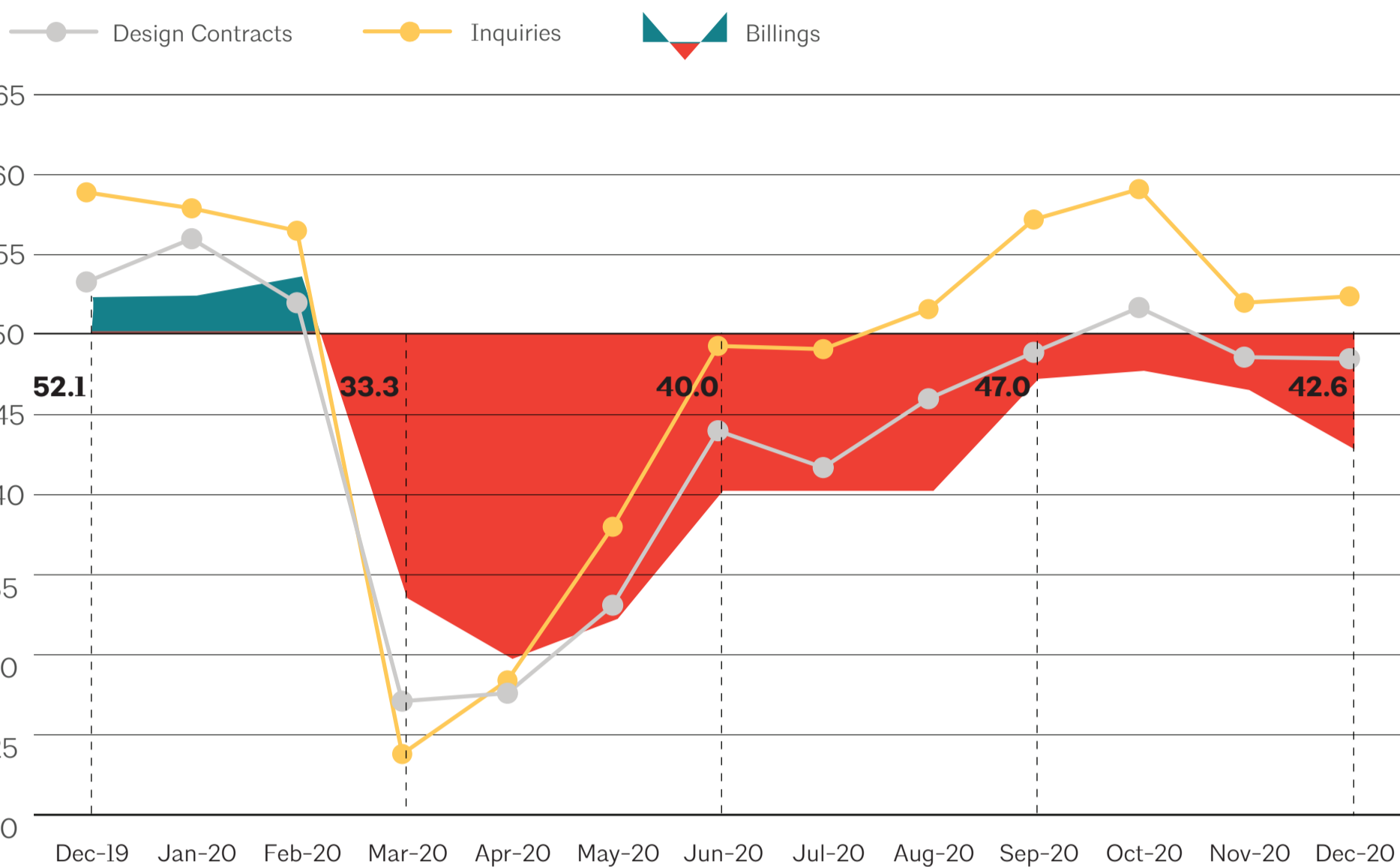
Above 50



Below 50

No change from previous period

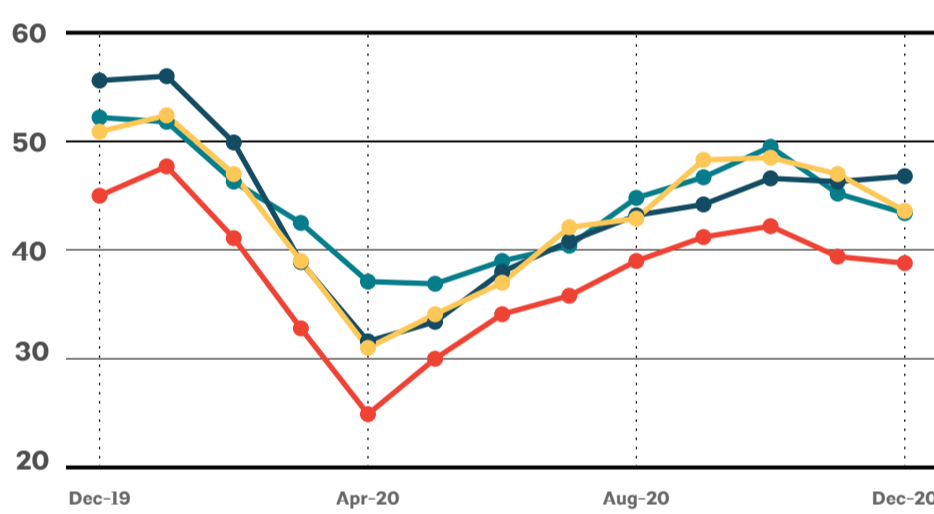
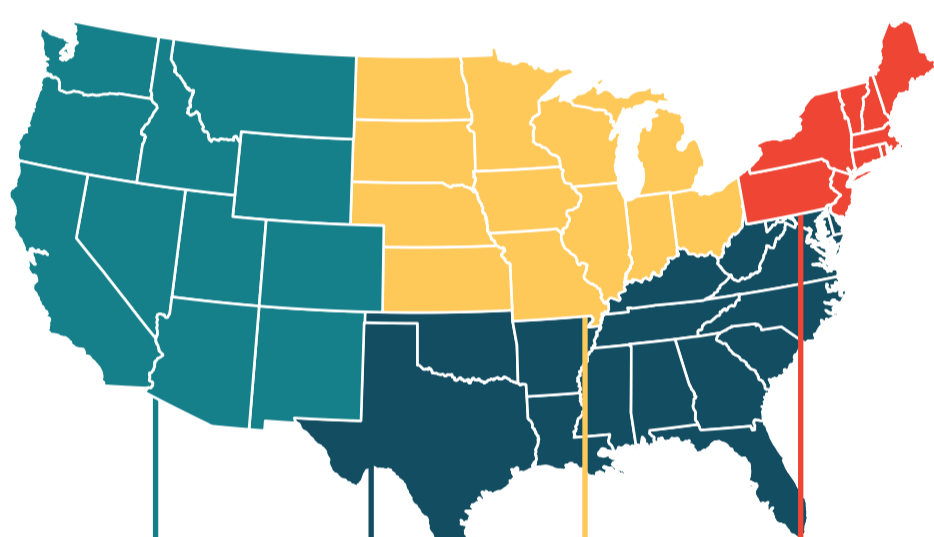
Graphs represent data from December 2019–December 2020.



Regional

Business conditions soften across most of the country

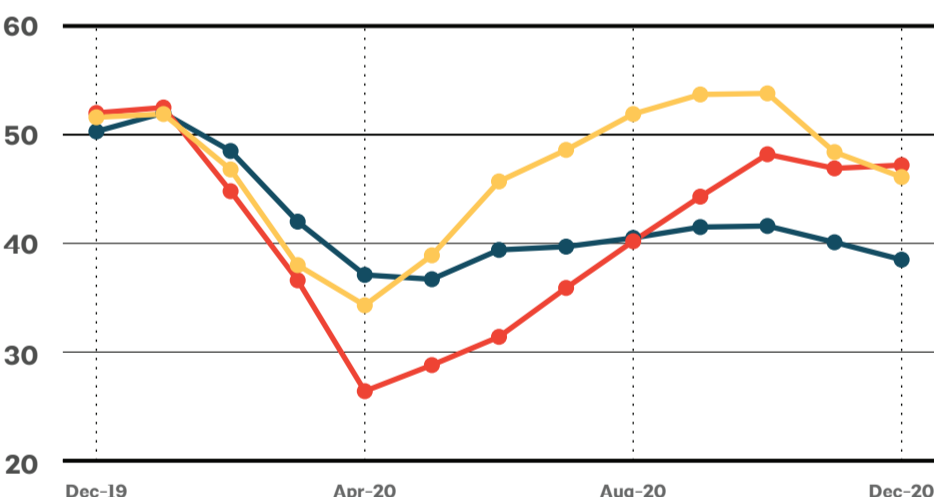
Graphs represent data from December 2019–December 2020 across the four regions. 50 represents the diffusion center. A score of 50 equals no change from the previous month. Above 50 shows increase; Below 50 shows decrease. 3-month moving average.



Sector

Billings declined at firms of all specializations

Graphs represent data from December 2019–December 2020 across the three sectors. 50 represents the diffusion center. A score of 50 equals no change from the previous month. Above 50 shows increase; Below 50 shows decrease. 3-month moving average.



Practice

Despite the pandemic, more than one quarter of architecture firms saw their profitability rise from 2019 to 2020

units: change in 2020 profitability compared to 2019, % of firms

