

This cover section is produced by the AIA Archives to show information from the online submission form. It is not part of the pdf submission upload.

2020 AIA Fellowship

Candidate Yanel de Angel Salas
Organization Perkins and Will
Location Milton, Massachusetts
Chapter AIA Massachusetts; Boston Society of Architects/AIA

Category of Nomination

Object 5 > Service to Society

Summary Statement

With influence spanning global, civic and professional communities, Yanel de Angel's leadership brings simplicity to complexity while unifying and motivating community leaders, clients and policy makers to reimagine and enact new social and environmental archetypes.

Education

Master in Design Studies, History and Theory of Architecture,
Graduate School of Design, Harvard University, 2005-2006

Master of Architecture 1,
School of Architecture, Syracuse University, 1996-1999

International Study, Florence Italy
School of Architecture, Syracuse University, 1997-1998

Bachelor in Environmental Design,
School of Architecture, University of Puerto Rico, 1992-1996

Licensed in: Florida #94101
Massachusetts #31763
NCARB #74616

Employment

Principal, Perkins and Will
Boston Studio, Massachusetts, 2008-present

Lecturer in Architecture, Northeastern University
Boston, Massachusetts, 2008-2009

Project Designer, Sasaki Associates
Watertown, Massachusetts, 2006-2007

Drawing Instructor, Career Discovery Program, Harvard University GSD
Cambridge, Massachusetts, 2006

Instructor, Environmental Design Department, Maryland Institute College of Art

Baltimore, Maryland 2004-2005

Project Designer and Manager, Castro Arts
Baltimore, Maryland, 2003-2005

Project Designer, Ayers/Saint/Gross, Architects & Planners
Baltimore, Maryland, 2001-2003

Assistant Professor, School of Architecture, Syracuse University
Florence, Italy, 2000-2001

Teaching Assistant, School of Architecture, Syracuse University,
New York and Florence, Italy, 1996-2000

Summer Intern, Pantel del Cueto & Associates, Historic Preservation Consultants
Guaynabo, Puerto Rico, 1996 & 1999

Summer Intern, Studio Carmassi Architetti
Florence, Italy, 1998

Summer Intern, Luis Flores, FAIA
San Juan, Puerto Rico, 1997 and 1999

Summer Intern, Alexander Fernández, Architect
San Juan, Puerto Rico, 1995 and 1996

Work/Study, Cataloguer, University of Puerto Rico Architecture & Construction Archives
San Juan, Puerto Rico, 1994-1995



September 16, 2019

Dear FAIA Jury Chair:

As sponsor to Yanel de Angel's nomination to Fellowship in the AIA, it is my honor and privilege to recommend her enthusiastically. I have known Architect de Angel since she was an extremely studious and competitive college student during the 1990s, later as an intern at our private office, as a university professor, and continuously, as a colleague and friend. Her research, documentation and drawing skills were an asset to our projects, her talents as an educator evident in her students' work, and her passion for the social responsibilities of Architecture impressive as Jury member during design competitions and student charrettes at all levels.

If I were to list her qualities as a professional, I would describe her as an inquisitive individual constantly exploring unique issues. These are evident in her willingness to learn new venues and volunteer for positions within organizations and committees that benefit not only our profession as architects, but the general public as well. I am an admirer of her leadership of important causes like the protection of the environment, women's issues, resiliency and community involvement. Her passion for her family, country and profession are important qualities for the full life she possesses.

I have witnessed Yanel's growth and professional development garnering awards, recognitions and promotions in specialties infrequent in Architecture. Her **Service to Society** evidenced in her architectural projects, and community work has been characterized by her emphasis on the "underdog" or those less privileged and less fortunate, providing her talents to improve their environment. Her resourcefulness in the National Alliance to Mental Illness through a Boston radio show, her involvement in Women in Design at the Boston Society of Architects, and her involvement with high-school students and minorities, indicate the breadth of her community service.

Her spectacular initiatives such as ResilientSEE-PR, PRoTECHOS and MIT Techos in Puerto Rico after hurricanes Irma and Maria in 2017 have proved an indispensable aid to those who still suffer the devastating effects of mother nature from two years ago. More importantly, she has not initiated these community involvements for recognition, but rather as a genuine service to Latinos, which has had implications far beyond the geographical limits of Puerto Rico.

As a Fellow of the American Institute of Architects since 2002, I know that Architect Yanel de Angel reflects the goals and spirit of the Fellowship and will prove to be a continuing asset to our profession.

Sincerely,

Beatriz del Cueto, FAIA
Conservation Architect and Principal





Section 1 Summary of Achievements

Yanel de Angel hosting a panel discussion about Resilience at a client-facing neXt event. To her right is Atyia Martin, former City of Boston Chief Resilience Officer.



With influence spanning **global, civic** and **professional communities**, Yanel de Angel's leadership brings simplicity to complexity while unifying and motivating community leaders, clients and policy makers to reimagine and enact new social and environmental archetypes.

GLOBAL COMMUNITY



Yanel's devotion to creating a more resilient and sustainable world inspires and bonds diverse people to common purposes.

Immediately after Hurricanes Irma and María made landfall in Puerto Rico, Yanel—a Puerto Rican native who immigrated to the US for graduate school—organized efforts for short term relief. Recognizing that more long-term solutions were needed, she built partnerships with academic institutions to host a symposium in Puerto Rico focused on energy and community health.

As these partnerships grew, Yanel created a platform for long-term relief. Supported by Perkins and Will's non-profit organization, AREA Research, **Yanel led the strategic conceptualization and creation of resilientSEE-PR, a global, multidisciplinary alliance of academic, private and non-profit organizations that provides holistic, pro-bono resilient design and planning to communities of every scale.**

With an S-E-E approach—social, environmental and economic—resilientSEE-PR serves as strategic advisor to Puerto Rico's central government, municipalities and local NGO's. With various completed and ongoing projects, resilientSEE-PR provides critical analysis and design solutions Island-wide for large and small communities. The alliance is accelerating reconstruction efforts and empowering community leaders to advocate for resilient and sustainable solutions. As a replicable framework, resilientSEE is expanding to new geographical areas.

CIVIC COMMUNITY



Yanel's commitment to social service reaches beyond architecture to provide individuals and communities much needed expertise and to connect people to one another.

As a US immigrant, Yanel recognized a rise in depression, adolescent alcohol and substance abuse, domestic violence, and threats to children's mental wellbeing in Boston's immigrant community. **She launched the National Alliance of Mental Illness (NAMI) Latino Metro Boston live radio show and co-hosted weekly shows to provide the community professionals, service providers and education to destigmatize mental illness in the Latino population.**

She curated broadcasts' themes to tackle difficult subjects intensifying in these communities. Yanel revamped a bi-monthly newsletter as its editor gathering sponsors to sustain the radio show. She co-hosted monthly NAMI Latino chapter meetings and helped launch the annual NAMI Latino Mental Health Fair—a day dedicated to awareness and education. During her service, participation in the Latino chapter increased trifold. She now co-leads a Girl Scout troop focused on social service.

Yanel's passion for minority advocacy transforms the project leadership role in higher education into a champion for collocation of student diversity and program services, conceptualizing affordable student housing strategies, and integrating co-curricular learning programs, all to create welcoming and accessible environments for non-traditional students.

PROFESSIONAL COMMUNITY



Yanel advocates for advancing women and minority leadership in the profession and among its allied organizations.

In the Women in Design (WiD) Principals Group at the Boston Society of Architects (BSA), Yanel co-chairs AIA/BSA's WiD Design Excellence Awards Committee, which annually recognizes three exemplary women who use their position to give back and inspire others.

Through her WiD involvement, Yanel identified a damaging discontinuity in the pipeline for women in practice leadership. **She gathered fellow principals and emerging women leaders to create the BSA WiD Mid-Career Women in Design Mentorship Program.** She led the program's conceptualization. Now in its third cycle, the program has inspired two additional AIA chapters to begin similar efforts.

As part of Perkins and Will's Diversity Council, Yanel is passionately dedicated to growing the inclusion of minorities in the design industry, participating in an ACE program, regularly hosting minority high school interns, partnering with allied organizations, lecturing at high schools and co-leading the creation of Perkins and Will's Boston Studio WiD program, now a model launched across the firm.

Section 2.1: Significant Work

Community Involvement/Volunteering

- Global Community
- Civic Community
- Professional Community

Lectures and Presentations

- Global Community
- Civic Community
- Professional Community

Exhibits and Collaborations

Buildings and Master Plans

- Pro Bono Projects with resilientSEE (2017 to present)
- Projects with Perkins and Will (2008 to present)

Section 2.2: Significant Recognition

Awards, Honors and Scholarships

Project Awards

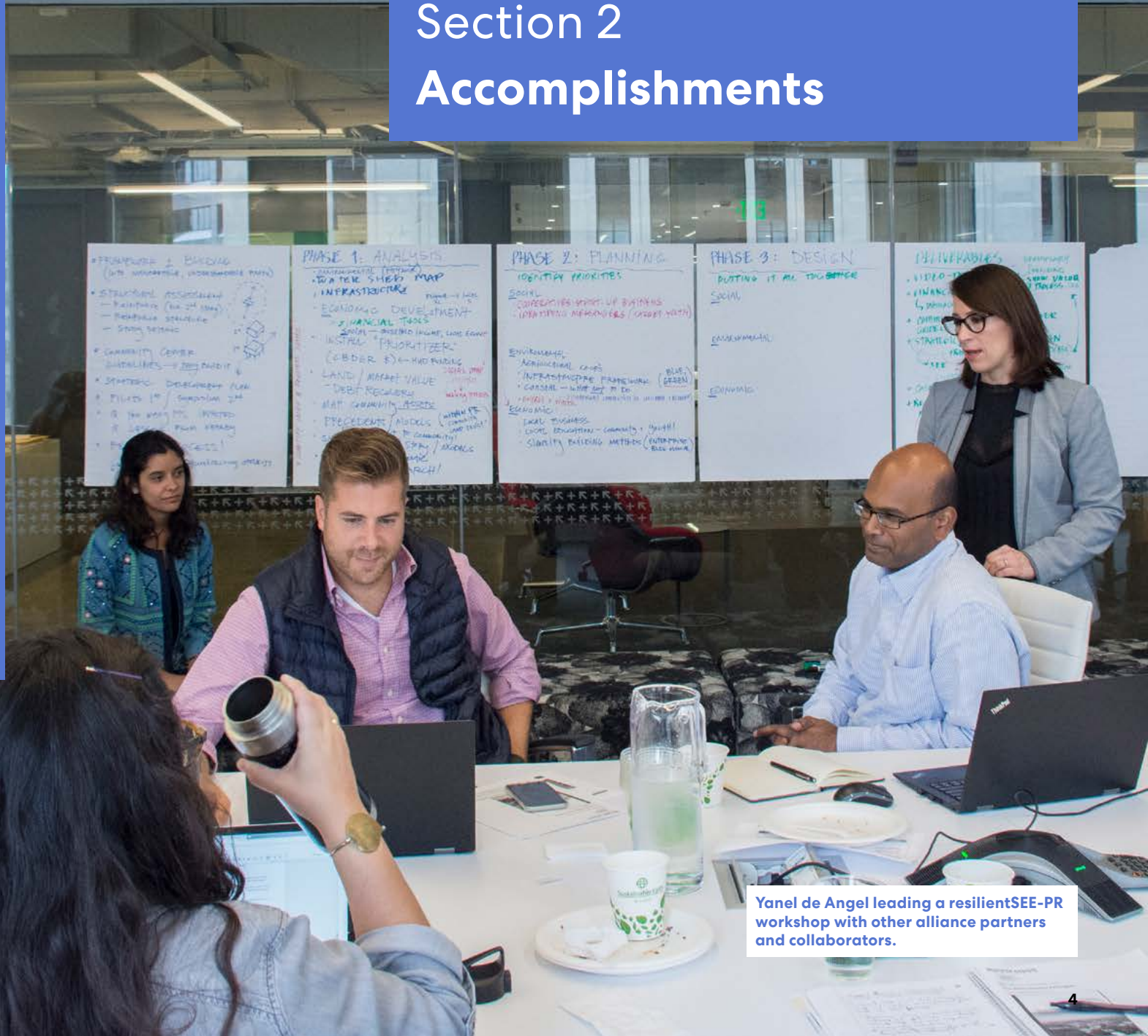
Section 2.3: Publications

Publications by Nominee

Publications about Nominee and Nominees' work

Other media

Section 2 Accomplishments



Yanel de Angel leading a resilientSEE-PR workshop with other alliance partners and collaborators.

Section 2.1 Significant Work

resilientSEE
Kickoff, 2018



resilientSEE
Workshop, 2018



East Boston
Community
Workshop, 2018



“Building
Adaptation”
workshop, ‘Keep
Safe’ Guide,
Puerto Rico,
2018



Community Involvement / Global Community

Member, Advisory Board, National Museum of Puerto Rican Arts and Culture 2019-present

Advisor to CEO and Board of Directors, identifies other Puerto Rican communities in the diaspora to partner with, makes recommendations to aid NMPRAC’s mission, promotes NMPRAC events and exhibits, supports the preservation and advancement of Puerto Rican arts and culture, and identifies and assists with fundraising opportunities.

Member, Advisory Board, PROTECHOS 2019-present

Provides communities technical advice, recommendations and connections for roof rebuilding; promotes and fundraises for this Puerto Rico-based non-profit that rebuilds hurricane-damaged roofs while paying and training individuals to become carpenters.

resilientSEE-PR Representative, NGO Cluster Collaboration 2019-present

Participant in a group of international NGOs developing action plan for times of disaster to map and coordinate preparedness, response and recovery activities in Puerto Rico.

Co-Author, Technical Content Developer and Project Manager; Community Together: A Guide for Resilient Community Center Design in Island Communities 2019-present

Conceptualized, championing and producing community center guide for Island leaders via resilientSEE-PR in collaboration with partners Enterprise Community Partners, Relmagina Puerto Rico, Mercy Corps Puerto Rico, Resilient Power Puerto Rico and Designed-4-Resilience. Published in Spanish and English and free to the public, the Guide will be launched in Puerto Rico on October 2019, after Hurricane Maria’s 2nd-year anniversary, with a train-the-trainer phase scheduled Fall 2019.

Founder and Leader resilientSEE-PR 2018-present

Founded and built global and multidisciplinary alliance committed to designing a more resilient and sustainable Puerto Rico. Today, the alliance has various completed and on-going projects.

Workshop Leader, Creator and Translator; East Boston Flood Prevention Design Workshop 2018

Gathered community planning concerns and ideas and helped translate the final report (for the community’s Spanish speakers) for this NOAA Initiative to educate and empower the East Boston community to advocate for themselves in City of Boston discussions.

Participant, City of Boston Council Ordinance Net-Zero-Carbon Working Group 2018

Provided advice and co-authored document outlining strategies for legislative policy implementation to achieve a net zero carbon goal for the City of Boston by changing housing energy regulations and providing development incentives to achieve a net-zero-carbon goal (one of only a few Boston-based professionals invited).

Lead Technical Partner, Enterprise Community Partners, Keep Safe: A Guide for Resilient Housing Design for Island Communities 2017-present

Conceptualization and creation of a resilient design housing guide; co-created “Building Protection” chapter and provided oversight of technical drawings and content development. The guide, published in Spanish and English and free to the public, will launch in Puerto Rico on October 2019 with a train-the-trainer phase scheduled Fall 2019, with plan to roll out in the Virgin Islands and other Caribbean Nations.

Section 2.1 Significant Work

Interviewing doctoral students, Massachusetts School of Professional Psychology, NAMI, 2011



Interviewing Laurie Van Loon, Women and Violence, NAMI, 2011



Interviewing Adelina Vega, South End Community Health Center, NAMI, 2010



Girl Scout Troop, Bridging Ceremony, 2018



Community Involvement / Civic Community

Co-leader, Troop #62877, Girl Scouts of MA, 2016-present

Focuses her neighborhood troop on social service and leadership development.

National Alliance Of Mental Illness, Metro Boston Latino Chapter

Co-Host, NAMI Latino y La Comunidad (with social worker, Marcos Rosenbaum) 2008-2012

Weekly live radio program at WUNR 1600 AM focused on adult and childhood mental health: coordinated interviews with medical professionals and service providers; developed scripts and program schedule.

Sample Year 2011, Programs:

- **Host, Samaritans: Suicide Prevention**, confidential guest, interview by Yanel, December 27
- **Program Coordinator, Arbour Hospital Services**, Dr. Francisco Matorras, interview by Marcos, December 20
- **Co-Host, The Problem of Being a Parent in the 21st Century**, Dra. Mayra Nevaes, interview by Yanel and Marcos, December 13
- **Co-Host, Open Dialogue**, conversation with Yanel and Marcos, December 6
- **Co-Host, Clinical Treatments: Hypnosis and Music**, interview Sandra C. Ferreira Iannone by Yanel and Marcos, January 13
- **Co-Host, Stigma: How to change Social Perception**, conversation between Yanel and Marcos, January 20
- **Co-Host, Living with Mentally ill Family Members**, conversation between Yanel and Marcos, January 27
- **Co-Host, Dealing with Loneliness: the mentally ill, the immigrant the elderly**, conversation between Yanel and Marcos, February 3
- **Host, Depression in Children**, interview Dr. Roxana Llenera-Quinn, Boston Children's Hospital, interview by Yanel, February 10
- **Host, B.E.S.T. team from the Massachusetts General Hospital**, interview by Yanel, February 24
- **Host, Ongoing research about Latin American Immigrant Mothers: Living in USA while having children still living in their country of origin**, Yanina Gonzales, Doctoral Student, MSPP, interview by Yanel, March 3
- **Program Coordinator, The Immigrant Experience**, Juan Rodriguez, interview by Paulina Fuentes Moad, doctoral student from MSPP, March 10
- **Program Coordinator, Arbour Hospital Partial Hospitalization Program**, Dulce Orozco, therapist, interview by Paulina Fuentes Moad, doctoral student from MSPP, March 17
- **Co-Host, Health Care for All**, Carlos Solis, interview by Yanel and Marcos, April 7
- **Program Coordinator, Body and Mental Health**, Miriam Garber, yoga instructor, interview by Paulina Fuentes Moad, doctoral student from MSPP, April 14
- **Program Coordinator, NAMI Latino Services and NAMI Walk**, conversation between Marcos and Paulina, April 21
- **Program Coordinator, Addictions and Psychoanalysis**, interview by Paulina Fuentes Moad, doctoral student from MSPP, April 28
- **Host, Women and Violence: Clinical Treatments**, Laurie Van Loon interview by Yanel, May 5
- **Co-Host, Veterans y Psychology Part 1**, Greg Matos is a veteran that just published his memoir, is currently a doctoral student at MSPP and does a lot for the Latino community and Veterans mental health, interview by Yanel and Marcos, May 12
- **Co-Host, Veterans y Psychology: Part 2**, Greg Matos is a veteran that just published his memoir, is currently a doctoral student at MSPP and does a lot for the Latino community and Veterans mental health, interview by Yanel and Marcos, May 19
- **Program Coordinator, Part 1: Youth at Risk and Domestic Violence**, Maria Arroyo, interview by Paulina Fuentes Moad, doctoral student from MSPP, June 2

Section 2.1 Significant Work

NAMI Latino,
Bi-Monthly
Newsletter



NAMI Latino,
Mental Health
Fair Flyer



NAMI Latino
Fundraising
Collateral



- **Co-Host, Part I: Memoir “In Her Wake: A Child Psychiatrist Explores the Mystery of Her Mother’s Suicide”** (www.inherwake.com), Dr. Nancy Rappaport, child psychiatrist and assistant professor of psychiatry at Harvard Medical School, interview by Yanel and Marcos, June 9
- **Host, Post Traumatic Stress Disorder in Children**, Lisa Fortuna, MD, UMass, interview by Yanel, June 30
- **Host, Center for Multicultural Research**, Dr. Maggie Alegria, Harvard professor, interview by Yanel, July 7
- **Co-Host, Foster Care: The System and Mental Health in Children and Adolescents**, Roberto A. Polanco Santana, interview by Yanel and Marcos, July 21
- **Co-Host, Talking Among Family, Latino Mental Health Initiatives**, Central MA Area Health Education Center, Inc., Sara Trillo Adams, MA, LMHC, Director, interview by Yanel and Marcos, July 28
- **Program Coordinator, Traumatic Experiences and its Effects in the Community**, Vincenzo Teran de Trauma Center, MSPP, interview Marcos, August 4
- **Program Coordinator, LGBT Discrimination and Awareness**, Sara Orozco, Ph.D., Core Faculty, Counseling Psychology Program, MSPP, interview by Marcos, August 11
- **Host, The Child Witness to Violence Program**, BMC, Carmen Norona, interview by Yanel, August 18
- **Host, Boston Children’s Hospital: Milagros para Niños Fundraising Gala**, Andres Trevino, Children’s Trust, August 25
- **Program Coordinator, Services at the Shriner’s Hospital**, Maria Arroyo, MSPP, interview by interview by Paulina Fuentes Moad, doctoral student from MSPP, September 8
- **Co-Host, Dialogue: Independence vs Dependence**, conversation between Marcos, Paulina and Yanel, September 15
- **Co-Host, The Process of Lost and Grief in the Immigration Process**, Mari Bennasar, BU, BMC, interview by Yanel and Marcos, September 28
- **Co-Host, Fundación Proyecto Maniapure**, Morel Orta, bringing medical services to Amazon communities, interview by Yanel and Marcos, October 5
- **Co-Host, Arbour Hospital: Services and Programs**, interview Dr. Barahona by Yanel and Marcos, January 6

Editor and Graphic Designer, NAMI Latino bi-Monthly Newsletter 2008-2012

Cofounder and Co-organizer, NAMI Latino Mental Health Fair 2008-2012

Section 2.1 Significant Work

Diversity and Inclusion Panel
AIA Miami, 2019



Mid-Career Mentorship Program, 2017



Perkins and Will 'We are Women and We are Here' website, International Women's Day, 2018



Diversity Council meeting Washington DC, 2017



Community Involvement / Professional Community

AMERICAN INSTITUTE OF ARCHITECTS

Panelist, "How can Design be Used to Help those Impacted within 48 hours of a Natural Disaster?" Young Architects Forum, AIA Atlanta, forthcoming, December 2019

Forum to connect emergency response and design experts for collaboration on key problems, design opportunities and implementable options for holistic shelter solutions that can be mobilized within days of natural disasters and transition to longterm housing.

Creator and Coach, "Diversity and Inclusion" joint panel discussion: AIA Miami (host), IIDA and NEWH, AIA Miami Center for Architecture and Design, Miami, FL 2019

Panelists from McHarry Associates, Gensler and Perkins and Will.

Co-Founder & Mentor, Woman in Design Mid-Career Mentorship Program Committee, AIA / BSA 2017-present

Envisioned and cofounded to overcome gender equity gap in practice leadership; engaged peer leaders to create program, now in its 3rd year; coordinates matches between mentor-mentee and peer to peer. Program is exemplary for other AIA chapters including AIA Springfield (Missouri) and AIA Columbus (Ohio).

Co-Chair & Member, Woman in Design Excellence in Design Awards Committee, AIA / BSA 2016-present

Leads annual award process from call for submissions, promotion, gathering submissions, organizing and facilitating jury, creating award day program, overseeing graphic design for collateral, and co-hosting award celebration. Has aided development of procedural changes to protect jury objectivity.

Member, Housing Committee, CREW (Commercial Real Estate Women Network) 2016-present

Partners with peer CREW members to pursue work together to promote more diverse project teams.

Accreditation Team Member, National Architectural Accrediting Board 2005-2008

Represented the AIA

PROFESSIONAL ORGANIZATIONS

Architectural Group Leader, ACE Mentoring Program 2014-present

Connects High Schools and students to ACE program.

Member & Mentor, CREW Mentorship Committee 2013-2016

Aided program coordination including match making sessions, program kick-off and wrap-up.

ACADEMIA

Career Services Advisory Committee – Alumni relations, Harvard University GSD, 2005-2006

Academic Senate Student Representative, University of Puerto Rico 1995-1996

Student Council President, AIAS Secretary, School of Architecture, University of Puerto Rico 1993-1995

WITHIN PERKINS AND WILL

MITxDar Group, Selection Committee to fund MIT Research Labs 2017-present

Member, Diversity Council (firm-wide) 2017-present

Founding Member, Project Delivery Board (firm-wide) 2013-2017

Leader, Project Management Community (firm-wide) 2013-2016

Sustainable Design Committee, Boston Studio Co-Leader, 2012-present

Excellence in Execution and Sustainable Architecture Committees, Firm-wide, 2009-2012

Section 2.1 Significant Work

Drury University,
Perkins and
Will office tour
and resilience
presentation,
2019



Sketching
with students,
Teaching
at Syracuse
University
Florence
program, 2000



SCHOOLS OF ARCHITECTURE REVIEWS

School of Architecture, Northeastern University, Boston, MA

Guest critic, "Innovative Business," Professional Practice 2019
Guest critic, Final Design and Drawing Reviews, 1st and 2nd
Year Studios 2006-2010

Boston Architectural College, Boston, MA

Guest critic, Final Design Review, Degree Project 2017
Guest critic, Resiliency Studio, Final Design Review 2016

Drury University, School of Architecture, Springfield, MO

Guest studio critic 2017

School of Architecture, Roger Williams University, Bristol, RI

Final thesis design review 2009

Environmental Design Department, Maryland Institute

College of Art, Baltimore, MD

Final thesis design review 2004

University of Maryland, School of Architecture, College Park, MD

Master Plan vertical studio design review 2003

Drury University, School of Architecture, France Summer Program, Paris, France

Drawing workshop and presentations to third- and fourth-
year students 2002

Kent State University, School of Architecture, Florence, Italy

Fourth year undergraduate design reviews 2000-2001

JURIES

Jury Member, Passive House Projects Design Competition, Passive House Conference, Boston, MA, 2018

Juror Member, AIA Puerto Rico Annual Design Excellence Award, San Juan, PR 2015

Section 2.1 Significant Work

resilientSEE
presentation,
ABX
Conference,
2018



“Utility
Resilience-
Lessons from
Puerto Rico”
presentation,
Climate
Adaptation
Forum, Boston,
2018



Interview,
Wicked Green
Podcast, Boston
Green Fest, 2016



“It Takes
a Village,”
Metropolis
Magazine Think
Tank, 2018



“Designing
our Future”
Panel, Boston
GreenFest, 2017



Lectures and Presentations / Global Community

Presenter, “resilientSEE: A Multidisciplinary Platform for Resilient Planning” AIA Columbus, Columbus, OH 2019

To audience of 50+ chapter members.

Presenter, “Community Organizations and Lessons Learned” Caribbean Strong: Building Resilience with Equity Conference, San Juan, Puerto Rico 2019

Presented to audience of 500 about the resilientSEE-PR on-going work and transformative impact to communities. Other panelists: Samuel Gonzalez, President and CEO of United Way Puerto Rico; Annie Mayol, President, Foundation for PR; Mariely Rivera, Executive Director, Unidos for Puerto Rico; Laura López, Executive Director, Ángel Ramos Foundation; and Gautam Sundaram, Urban Planner, Perkins and Will

Presenter, “resilientSEE: Design Professionals for Disaster Relief” Architecture Boston Expo, Boston, MA 2018

Presented resilientSEE as replicable framework for other design professionals to offer pro bono disaster relief services

Co-Presenter, “BHI, Syrian Initiative, resilientSEE, OAC Overview” Architecture Boston Expo, Boston, MA 2018

Co-presented resilientSEE ongoing efforts and how to use power of the professional design community to enact change for communities at risk around the world.

Presenter, “Utility Resilience: Lessons from Puerto Rico” Climate Adaptation Forum, Boston, MA 2018

Representing resilientSEE, presented to an audience of 200 followed by a panel discussion which included Malu Blázquez Arsuaga, Executive Director of the Resilient Puerto Rico Advisory Commission (Relmagina), and Jonathan Marvel co-founder of Resilient Power Puerto Rico.

Presenter, “Vivienda y Energía en Puerto Rico” 2018: 15to Foro de Constituyentes de Energía, Boston, MA 2018

Presentation and discussion representing resilientSEE, with Dr. Fernando Abruña, sustainable housing expert, and architect Carlos Muñiz, representing social work at Caño Martin Peña, San Juan, Puerto Rico

Panelist, “It Takes a Village: The Role of Community in Designing for Resilience” 2018: Metropolis Magazine Think Tank, Washington, DC 2018

Panel discussion focused on relief work in Puerto Rico after Hurricane María. Representing resilientSEE, Yanel shared panel with Marilyn Shapley, Senior Policy Advisor, Mercy Corps; Erika Ruiz, Director, Enterprise Community Partners; and Armando Nazario, Senior Designer, Perkins and Will

Contributor, Urban Settlements Track, Resilient Caribbean Conference, MIT, Cambridge, MA 2017

Panelist, “Designing our Future” Boston GreenFest, Boston, MA 2017

Moderator, “Resiliency” NeXt Event panel with Boston city leaders, hosted by Perkins and Will, Boston, MA 2015

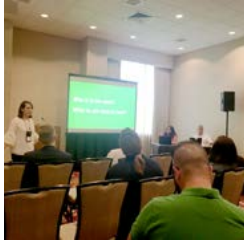
Co-Presenter, “A Conversation around Net Zero Energy Building Practices” Redevelopment Authority, February 2014

Section 2.1 Significant Work

With Brown University, ACUHO-I, Academic Initiative Conference, 2018



With Plymouth State University and University System of New Hampshire, ACUHO Conference, 2017



With Bridgewater State University at the NEACUHO Conference, 2014



Lectures and Presentations / Civic Community

Co-Trainer, “Train-the-Trainer Workshop for Keep Safe and Community Together Guides” Department of Housing, Puerto Rico, 2019

Training to government officials with COR3 and FEMA reps

Panelist, “Transformative Trends in Student Housing” NEACUHO Annual Conference, Albany, NY 2019

With peers from MIT, Brandeis and Bridgewater State University.

Presenter, “A Wellness Center & Residential Program: Conceptualizing an Initiative” ACUHO-I Academic Initiatives Conference, Pittsburgh, PA 2018

Presenter and Panelist, “Designing the Future Ready School Symposium” A4LE.org, Boston, MA, 2018

Co-Presenter and Workshop, “Storytelling: The Key to Being an Influencer!” Part 2 ERAPPA 2017 Conference, Washington DC, 2017

Co-Presenter, “Student Housing Master Planning: A How-to Guide” ACUHO-I / APPA Conference, Washington DC, 2017

Co-Presenter, “Residence Hall flipped Hotel: financial, operations, design strategies” ACUHO-I Conference, Providence, RI 2017

With Capital Projects Director University System of NH

Workshop Co-Presenter, “Storytelling: The Key to Being an Influencer!” ERAPPA 2016 Conference, Niagara Falls, Canada 2016

Tour Host, Lory Student Center at Colorado State University, ACUI Region IV Conference, Boulder, CO 2016

Co-Presenter, “Aiming at Zero: The Struggle to Get There” NESEA Conference, Boston, MA 2015

Co-Presenter, “Smith College’s SOM-designed Cutter & Ziskind Houses: A Mid-century Renovation to a Treasured House Program” DOCOMOMO-US/New England, Boston, MA 2015

Co-Presenter, “Five Steps Toward Creating Space for an LLC Program: The Process at Keene State College” ACUHO-i Living Learning Conference, Orlando, FL 2015

Co-Presenter, “A Path to Zero Net Energy Buildings” Workshop, DASNY, NY 2015

Co-Presenter, “Diversity at the Front Door: The Lory Student Center at Colorado State University” ACUHO-i Annual Conference, San Antonio, TX 2015

Co-Presenter, “Summers Slammers: Lessons Learned at Smith College and Clark University” ERAPPA Conference, Atlantic City, NJ 2014

Presenter, “Webinar: strategies to reach zero net energy” Sustainable Performance Institute Boston, MA 2014

Co-Presenter, “An Energy Responsible Living Experience” Architecture Boston Expo Conference, Boston, MA 2014

Co-Presenter, “Purposefully Programmed, Planned, and Designed Living Learning Communities at Bridgewater State” ACUHO-I Living Learning Communities Conference, KS 2014

Co-Presenter, “Celebrating Diversity: The Lory Student Center at Colorado State University” ACUI Region IV Conference, Salt Lake City, UT 2014

Co-Presenter, “A Sustainable Residential Community: Lessons from Bridgewater State University” NE-ACUHO Annual Conference, Bridgewater, MA 2014

Co-Presenter, “Learning to Live without Micro-fridges in a Residential Community: Lessons from Bridgewater State University” ACUHO-i Annual Conference, Washington DC, July 2014

Presenter, “Getting Active about Passive Design” USGBC MA Green Breakfast Club, May 2014, Boston, MA May 2014

Co-Presenter, “Sustainability: Projects Striving for Net Zero Energy Consumption; Six Perspectives, Strategies That Worked (and Didn’t), Perspectives from Multiple Design Teams and the Colleges They Represent” ERAPPA Focusing on the Future, Rochester, NY 2013

Panelist, “Behaviors and Outcomes – Sustainability and LEED EBOM” APPA Facilities Workshop, MIT, Cambridge, MA February 2012

Co-Presenter, “UPOD: A Modular Living Environment for Students” No Name Conference, Beyond the Box: Exploring Current Changes in Place, Space & Technology, Boston, MA 2011

Co-Presenter, “A Study for Carbon Neutrality: The Impact of Decisions, Design, and Energy – Transforming Residence Life” ACUHO Annual Conference, Association of College and University Housing Officers, Baltimore, MD 2009

Section 2.1 Significant Work

Monterrey Technology Institute students after presenting "The Design Profession," 2019



Students from Chelsea High School, after two interactive sessions with the Latino students, 2018



Perkins and Will Leadership Conference, 2015



'From the Ground Up,' Women in Design Panel, ABX Conference, 2018



Lectures and Presentations / Professional Community

Presenter, "My Career Path" ARUP Diversity & Inclusion, Women Network, Boston, MA 2019

To inspire an open dialogue on design industry gender challenges and opportunities among women engineers

Co-Presenter, "Storytelling for Design Professionals" AIA / BSA, Boston, MA 2019

Workshop with colleague Carolyn Cooney for the Women in Design Professional Development Committee

Co-Presenter, "The Design Profession" School of Architecture, Monterrey Institute of Technology, Mexico 2019

Discussed career path, internships, firm size, and experiences

Panelist, "From the Ground Up: Grassroots Initiatives" Architecture Boston Expo, Women in Design Symposium, Boston, MA 2018

Explored the genesis, execution and growth of grassroots movements as they relate to the design community

Presenter, "A Latina Immigrant Experience" Chelsea High School, Boston, MA 2018 Advance Latin Studies

Interactive sessions with Latino students reflecting on personal journey

Presenter, "Art and Performance: Aesthetics and Technology that Meet 21st Century Challenges" Drury University, School of Architecture, Springfield, MO 2017

Presenter, "Contrast, Flavor, Simplicity, Magic" Perkins and Will Leadership Conference, Oregon 2015

Personal storytelling presentation, 500 colleagues attended

Presenter and Juror, AIA Puerto Rico Annual Design Excellence Award, San Juan, PR 2015

Jury member, and presentation of professional work during award ceremony

Presenter, "Toward Net Zero: A Zero Net Energy Pilot Study at Bridgewater State University" 2014

Building the Future: Toward Net Zero, Boston, MA

Lecturer and Workshop Lead, "Drawing Dialogues" Drury University, School of Architecture, Springfield, MO 2003

Co-lead drawing workshop and school-wide lecture

Exhibits and Collaborations

Organizer, IMPACT: Inspired & Inspiring, AIA / BSA, Salt Gallery, Boston, MA 2020 (forthcoming)

Marks 20th Anniversary of WiD Award of Excellence and coincides with International Women's Day, showcasing impact Awardees have made throughout their careers.

Organizer, National Museum of Puerto Rican Arts & Culture, Chicago, IL 2019

resilientSEE-PR and the museum have partnered to be anchor site for the Chicago Biennial. The exhibition will be open from October 2019 to March 2020 throughout which there will be monthly programmed events such as panel discussions, and interactive children and youth workshops. Yanel proposed this exhibition to the Museum Board of Directors to tell the stories of the many partnerships between Island community leaders, diaspora and nonprofit organizations that are directly engaged in relief activities. Yanel is bringing other partner organizations representing efforts undertaken by diaspora in three major cities from the mainland: Chicago, Boston and New York. The stories illustrate community engagements in diverse geographical regions from the Island from mountain to coastal communities.

Exhibitor, Boston GreenFest, Boston, MA 2018

resilientSEE-PR

Exhibitor, Design Professionals for Disaster Relief conference, ABX Conference, AIA / BSA, Boston, MA 2018

resilientSEE-PR

Exhibitor, "Drawing Dialogues: An Analysis of French Architecture" Ayers/Saint/Gross, Architects & Planners, Baltimore, MD 2002

Joint exhibit of travel sketchbooks and color drawings from France

Exhibitor, "Architecture Recorded" American Institute of Architects, Baltimore Chapter, Baltimore, MD 2001

Joint exhibit of travel sketchbooks and color drawings from Europe

Exhibitor, "Spain and Portugal 2000 Summer Program Exhibit" Syracuse, NY 2000

Collective drawing exhibit at the Syracuse University School of Architecture

“We create these arbitrary lines in the planet, and we call them countries. But we all share the same human condition and aspirations for a better life. It is time to think about borders differently.”

Yanel de Angel

With Mayor, Toa Baja, on agreement to establish a long term collaboration with resilientSEE for strategic advice.



Martorel Fisherman community, Yabucoa, P.R., after major coastal erosion, Hurricane Maria.



Student Engagement Session, Housing Master Plan at the University of Northern Iowa, 2018



Buildings and Master Plans

PROJECTS WITH RESILIENTSEE

Cambridge resilientSEE: the Charles River Corridor, Resilience Analysis 2019

Cambridge, Massachusetts
Resilience Strategist

Community Together: A Guide for Resilient Community Centers Design for Island Communities 2018-present

Puerto Rico
Project Manager, Content Developer

Villas del Sol Community Resilient Framework Plan 2018-present

Puerto Rico
Project Leader, Resilience Strategist and Housing Expert

Autonomous Municipality of Toa Baja Resilient Framework Plan 2018-present

Puerto Rico
Project leader and resilience strategist

Keep Safe: A Guide for Resilient Housing Design for Island Communities 2017-present

Puerto Rico
Lead technical and strategic partner, content developer

PROJECTS WITH PERKINS AND WILL

University of Northern Iowa – Housing Master Plan 2019

Cedar Falls, Iowa
Residential Life Planner

Monterrey Institute of Technology - New Student Housing for multiple campuses 2019

Monterrey, Santa Fe, Puebla, Queretaro, Guadalajara Mexico
Principal-In-Charge, Programmer, Planner and Interior Design Leader

Brown University - New Wellness Center and Residence Hall Conceptual Study; Housing Master Plan 2018

Providence, Rhode Island
Managing Principal, Residential Life Planner

Maine Medical Center - Sustainability and LEED Administration 2017

Portland, Maine
Sustainability Strategist and LEED Administrator

University of California Riverside - North District P3 Development Competition 2017

Riverside, California
Student and Residential Life Programmer and Planner

Plymouth State University - Merrill Place Residence Hall; Campus-wide Dining Study 2017

Plymouth, New Hampshire
Project Manager and Residential / Dining Programmer and Planner

Keene State College - Living-Learning Commons 2016

Keene, New Hampshire
Residential Planner, Sustainability Expert and Project Manager (affordable housing)

University of California San Francisco - Student, Trainee, and Faculty Housing Master Plan 2016

San Francisco, California
Designer and Residential Life Planner

University of New Hampshire - Memorial Union Building Expansion and Renovation Study 2016

Durham, New Hampshire
Project Manager and Student Life Programmer, Planner and Designer

Massachusetts Institute of Technology - West Campus Residence Life Study; New Vassar St Residence Pre-Design Study 2016

Cambridge, Massachusetts
Project Manager, Sustainability and Residential Life Programmer, Planner and Designer

University of Massachusetts Amherst - Furcolo Hall, College of Education 2015

Amherst, Massachusetts
Building Assessment and Sustainability Expert

Section 2.1 Significant Work

Student
Housing pursuit,
2017



Student
Engagement
Session,
Bridgewater
State University,
2011



Original
LGBTQ2
Center, Lory
Student Center,
Colorado State
University, 2012



Colgate
University, 2014



Sketching
design solutions
in the car
after a client
meeting, 2016



Colgate University - Residential Learning Communities 2014

Hamilton, New York

Designer and Residential Life Planner and Designer

Colorado State University - Lory Student Center Revitalization; Lory Student Center Theatre Renovation; Lory Student Center Master Plan 2014

Fort Collins, Colorado

Project Architect, Diversity Programs and Sustainability leader. Collocation of Student Diversity and Program Services traditionally siloed within existing building.

University of Pennsylvania - Residential Precinct Student Life Master Plan 2014

Philadelphia, Pennsylvania

Project Manager and Residential Life Planner and Designer

Smith College - Cutter and Ziskind Houses Renovation 2014

Northampton, Massachusetts

Project Designer, Sustainability and Residential Life Expert

Clark University - Bickman Fitness Center Expansion 2013

Worcester, Massachusetts

Project Designer and Manager

Bridgewater State University - George A. Weygand Residence Hall; Clinical Health Center 2013

Bridgewater, Massachusetts

Project Architect and Sustainability Expert

Connecticut State College and University System - Universities and Community Colleges Master Plans 2013-2018

Multiple Locations, Connecticut

Student and Residential Life Planner

University of Tennessee at Chattanooga, - Comprehensive Housing Master Plan 2011

Chattanooga, Tennessee

Project Manager and Residential Life Planner

Clarkson University - Student Center; Hamlin-Powers Residence Hall Renovation and Expansion; South Campus Residences Expansion; Moore Hall Concept Study, 2009-2012

Potsdam, New York

Project Architect and Student and Residential Life Expert

Carbon Neutral Research - Residence Hall Study 2009

Bristol, Rhode Island

Project Architect and Sustainability Expert

Roger Williams University - Cedar Hall Lobby and Lounge Expansion 2009

Bristol, Rhode Island

Project Designer and Architect

Section 2.2 Significant Recognition

Perkins and Will, Leadership Institute, Class of 2012



"From the Ground Up: Grassroots Initiatives" ABX WID Symposium, Boston, MA 2018



Resilient Planning Workshop, Perkins and Will, 2017



"Women in Design," Boston Studio, 2018



Awards, Honors and Scholarships

Diversity Council Award – Boston Studio Women in Design Program, Perkins and Will 2017

One of three awarded for excellence and replicability

Innovation Incubator Research Grant - Boston Studio, Perkins and Will 2017

Co-grant recipient "The Overnight Bed: Collecting / Benchmarking Design Data Across Market Sectors." Research leveraging common physical and perceived qualities in bedrooms across multiple sectors: Residence Halls, Hospitality, Health care and multi-unit led to identification of design trends, including wellbeing qualities and bedroom size optimization to translate into affordable housing models.

Leadership Institute - Perkins and Will, 2012-2013

Grant for leadership advancement to be an agent of change.

Innovation Incubator Research Grant - Boston Studio, Perkins and Will 2010

Co-grant to develop a system of flexible and transformable surface partitions for "Student Living Environments" to create loft type spaces for adaptive reuse buildings. A modular system was created to improve student housing affordability.

MacDowell Colony Fellow, Peterborough, NH, Wilder Green Fellow 2007-08

"Ephemeral Architecture in Movement: Triumphal Carts for the Palio Race in Siena." For a theoretical and modern reinterpretation of the ritual's triumphal carts.

Distinction Award, Master of Design Studies degree, Harvard University Graduate School of Design 2006

James Britton Award for Best Design Thesis Project, Syracuse University School of Architecture Commencement 1999

"Sacred and Profane: Public Spaces, the Palio Ritual and Market of Siena, Italy"

AIA Henry Adams Medal, Syracuse University School of Architecture Commencement 1999

Highest Academic Ranking in Master of Architecture Program

Graduate Master's Prize Award, Syracuse University School of Architecture 1999

Excellence in Scholarship and Research

Teaching Assistant Full Scholarship, School of Architecture, Syracuse University 1998-1999

Graduate School Grant, School of Architecture, Syracuse University Spring 1998

Grant for Pre-Thesis archival research and travel to Siena, Italy

Frederick W. Revels Travel Scholarship, School of Architecture, Syracuse University 1997

Dean's List Citation, University of Puerto Rico and Syracuse University 1992-1999

Project Awards

Honor Award, Excellence in Architecture – Plymouth State University, Merrill Place

AIA New Hampshire 2019

Honor Award, Excellence in Architecture - Keene State College, Living+Learning Commons

AIA New Hampshire 2017

Citation, Excellence in Architecture - Keene State College, Living+Learning Commons

Boston Society of Architects 2017

Award for Education & Research, b.o.b. Forum Design - Lory Student Center, Colorado State University

IIDA Georgia 2016

Award of Excellence - Lory Student Center, Colorado State University

ACUHO-I Facility Design 2015

Project Achievement Award, Weygand Hall, Bridgewater State University

Construction Management Association of America, NE 2014

Design Award of Excellence - Student Center, Clarkson University Student Center

ACUI Facility Design Award 2012

Bronze Award, 14th Annual Building Team Awards - Clarkson University Student Center

Building Design + Construction Team Awards 2011

Section 2.3 Publications

UPod, a modular living concept for college students, 2011



Dar Magazine, 2019



The Chronicle of Higher Education, 2018



Overnight Bed, 2018



Talking Stick, The Authoritative Source for Campus Housing, 2015



Publications by Nominee

“The Overnight Bed: An Analytical Study on Bedroom Types”
Co-author (with colleague Stephen Messinger)

Perkins and Will Research Journal, Fall 2019 (forthcoming)

“resilientSEE: A framework to Achieve Resilience Across Scales”
Co-author (with colleague Maria Roldan)

17th Issue, Dar Magazine, 2019

“Paving the Way for New Mothers in the Workplace” **Author**

Perkins and Will, Perspectives Blog, 2019

“resilientSEE: A Framework to Achieve Resilience Across Scales” **Author**

Perkins and Will, Perspectives Blog, 2019

“resilientSEE: A Framework to Achieve Resilience Across Scales” **Author**

Building Design + Construction, 2019

“How to Make your Residence Hall Work Year-Round”
Author

The Chronicle of Higher Education, 2018

“E Pluribus Unum (Officium): Integrating Many Voices into a Single Vision” **Author**

Perkins and Will, Perspectives Blog, 2018

“Extend Your Stay at Plymouth State’s New Merrill Hall”
Author

Perkins and Will, Perspectives Blog, 2018

“20th Century Design, 21st Century Demands: A Transformation at Smith College” **Author**

Perkins and Will, Perspectives Blog, 2016

“The Will to LEED: Can a campus be committed to sustainability without LEED certification to back it up?”
Author

Talking Stick, The Authoritative Source for Campus Housing Magazine: May + June 2015, Volume 32, Number 5, 2105

“Stay True to your Roots: Reimagining a Mid-Century Student Center” **Author**

Perkins and Will, Perspectives Blog, 2014

“A Zero Net Energy Pilot Study: Low Energy Strategies for Weygand Residence Hall at Bridgewater State University”

Co-author

Perkins and Will, Research Journal, Fall 2013

“Pods offer Flexible Living Spaces,” **Author**

Talking Stick: The Authoritative Source for Campus Housing, February 2012

“UPOD: A Modular Living Environment for Students: The Case for Today’s Community” **Co-author**

Perkins and Will, Research Journal, Fall 2011

“Practical Science (on research and practice)” **Author**

Architecture Boston, AIA / BSA, Science Issue (Volume 14 Number 3), 2010

“A Study for Carbon Neutrality: The Impact of Decisions, Design, and Energy – Transforming Residence Life” **Co-author**

Perkins and Will, Research Journal, Fall 2009

“Tschumi’s Fireworks Design for the Inauguration of Parc de La Villette: Pyrotechnic Architecture Translated” **Author and Publication Editor**

(Dis)-courses, first book in a series on MDesS History and Theory of Architecture, Harvard University Graduate School of Design, 2007

Section 2.3 Publications



CONNECTION,
2019



Sketch,
Tuscany, 2019



Sketch,
Castel Vecchio,
Verona, 2001



Sketch,
Florence, 2019

Publications about Nominee and Work

“Closing the Architecture Gender Leadership Gap” 2019

AIA.org, by Zack Mortice on Yanel’s experience with gender disparity in profession

“From the Ground Up, Architecture Boston Expo, WID Keynote Breakfast Summary” 2019

CONNECTION, Q2 – 2019, Volume 17, Issue 2, The Young Architects Forum, Issue 42, by Jennifer Hardy, featuring Yanel’s perspective on role of grassroots initiatives.

“Redefining Purpose” 2018

CONNECTION, Q1/Q2 - 2018, Volume 16, Issue 1, The Young Architect’s Forum quarterly journal on how emerging professionals are innovating in architectural practice, WiD Mid-Career Mentorship program committee members interview.

“Why Women need Mid-Career Mentors” 2018

Boston Society of Architects WID Mid-Career Mentorship Program committee member, interviewed by Julia Carpenter for CNN Money

“A New Hampshire College Offers Student Housing as Hotel Rooms During the Summer” 2018

Building Design + Construction

“Emergency Preparedness” 2017

College Planning & Management

“Smith College: Cutter & Ziskind Houses” 2016

College Planning & Management

“Project Zero, Bridgewater State University – George A. Weygand Hall: Decoding Net Zero for the Masses” 2015

Net Zero Buildings Magazine: March 2015, Volume 4, Number 2

“A Study for Carbon Neutrality: The Impact of Decisions, Design, and Energy: Transforming Residence Life” 2011

American School and University

Published Student projects in FOGLIO #5 2004

Newsletter for Syracuse University School of Architecture, Florence, Italy

Thesis: “Sacred and Profane: Public Spaces, the Palio Ritual and Market of Siena, Italy” 1999

School of Architecture’s Catalogue, S.U. Architecture Magazine and in Dialogue: Architecture, Design and Culture (August 2000, p.148)

Published Student’s projects in FOGLIO #4, 1998

Newsletter for the Syracuse University School of Architecture, Florence, Italy

Other Media

“Building a More Resilient Puerto Rico with Clean Energy” 2019

Union of Concerned Scientist / Podcast: Got Science? Episode 61, podcast with Yanel and resilientSEE collaborator Ramón Bueno

“Power of Good” podcast interview with Jake Murray 2019

resilientSEE founder Yanel de Angel speaks with Jake Murray about resilientSEE formation and work to share interdisciplinary “S-E-E” approach to resilient design, and the community-driven and participatory recovery process.

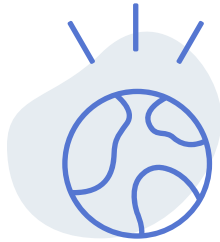
“Wicked Green Podcast” 2016

Boston Green Fest, interview by Executive Director of USGBC MA

Section 3 Exhibits



Yanel de Angel presenting the Island-wide and Toa Baja analysis at the “Caribbean Strong: Building Resilience with Equity” conference to an audience of 500 in Puerto Rico on behalf of resilientSEE, 2018.



GLOBAL COMMUNITY

- Exhibit 3.1** **Keep Safe: A Guide for Resilient Housing Design in Island Communities**
- Exhibit 3.2** **Community Together: A Guide for Resilient Community Center Design in Island Communities**
- Exhibit 3.3** **A Scalable and Replicable Framework for Resilient Planning and Design: Puerto Rico Island-wide and Toa Baja Municipality**
- Exhibit 3.4** **A Replicable Process: Villas del Sol Community Resilient Framework Plan**



CIVIC COMMUNITY

- Exhibit 3.5** **De-stigmatizing Mental Health in the Latino Community**
National Alliance of Mental illness (NAMI), Metro Boston Latino
- Exhibit 3.6** **Collocation of Diversity Programs and Services**
Lory Student Center, Colorado State University
- Exhibit 3.7** **A Model for Academic Success and Affordability in Residential Life**
Living-Learning Commons Residence Hall, Keene State College



PROFESSIONAL COMMUNITY

- Exhibit 3.8** **Growing Pipeline of Women Leaders in the Profession**
AIA/BSA Women in Design Mid-Career Mentorship Program
- Exhibit 3.9** **Recognizing Exemplary Women to Inspire the Next Generation**
Women in Design (WiD) Award of Excellence

Exhibit 3.1 Keep Safe: A Guide for Resilient Housing Design in Island Communities



Role: Strategic Team Leader, Author & Lead Technical Partner

Firm of Record: Perkins and Will (resilientSEE Alliance Member; pro bono) with Enterprise Community Partners, Inc.

Design Firm: n/a

Completion: Guide Launch, Train-the-Trainer Phase, October 2019

Synopsis: Enable people to be prepared to build back communities devastated by natural disasters stronger, so that when tens of billions of dollars of federal aid arrive, the funds could be used to protect residents from future harm. The guide provides practical and affordable ideas for rebuilding homes. A train-the-trainer phase is scheduled for Fall 2019.

Challenge: Assemble a team diverse enough in multi-sectorial representation and expertise to create consensus on content and produce a comprehensive and technically correct, relevant and contextual resilient housing guide.

Action: Since the project's kick off, which gathered input through workshops, Yanel has served on the strategic team conceptualizing the *Guide*;

DECLARATION OF RESPONSIBILITY

I have personal knowledge that the nominee is largely responsible for technical content, and is a key advisor for overall 'Guide' conceptual organization of the project listed above.

Laurie Schoeman

Senior Program Director, National Initiatives, Resilience / Enterprise Community Partners, Inc.

she led the creation of the "Building Protection" chapter and provided overall oversight of technical drawings and content development, often producing technical freehand sketches to direct graphic content development. She brought expert partners into the project to support the development and participate in the training program.

Outcome: The *Resilient Housing Design Guide*, at almost 500 pages, will be free to all residents of Puerto Rico, Virgin Islands and other Caribbean Nations. This timely resource will inform planning and design for recovery efforts for the \$19.8 billion fund soon to be available of Community Development Block Grant – Disaster Recovery (CDBG-DR).

Publications:

"Keep Safe: A Guide for Resilient Housing Design in Island Communities" Recover Rebuild, 2019

"Preparan una guia de vivienda resiliente" Endi, 2018

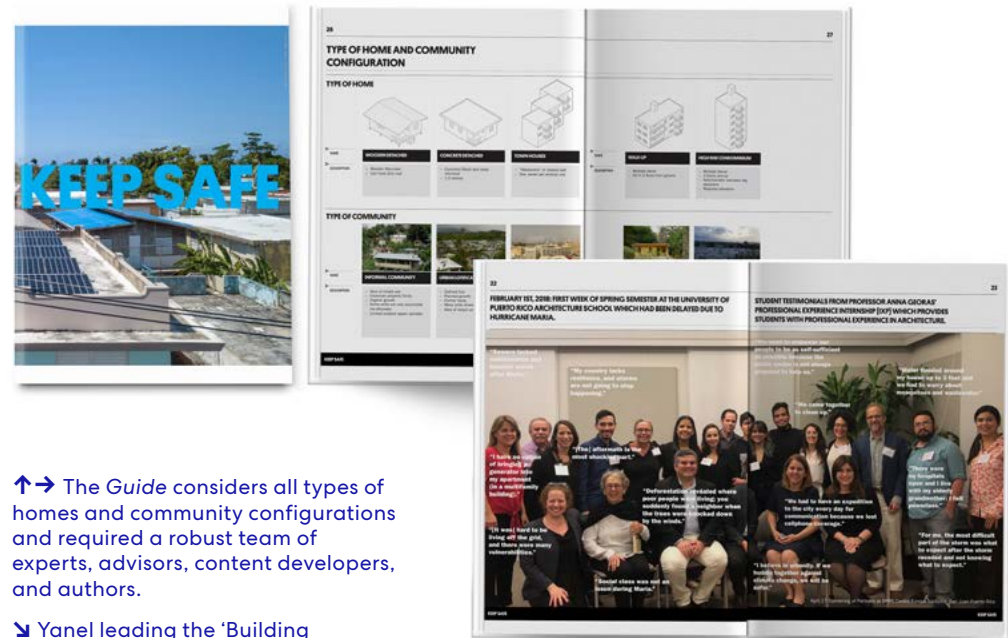
"Instructions on Rebuilding a Resilient Puerto Rico" Building Green, 2018

"Advierten código de construcción de la Isla debe ser más fuerte" Noti Uno, 2018

"After Hurricane Maria, partnership emerges to encourage resilient housing design and construction in Puerto Rico and U.S. Virgin Islands" MultiHousing Pro, 2018

"A manual to survive the effects of extreme weather for island homes" Unidospor

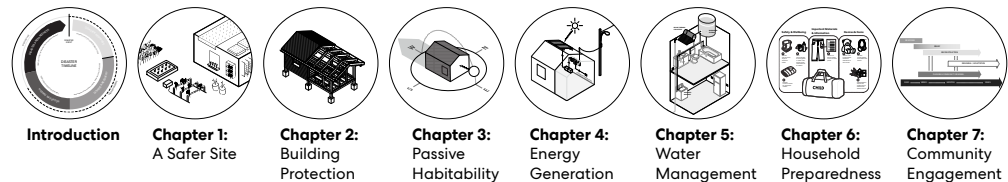
"\$20 Billion from HUD and "Informal" Housing to Meet in Puerto Rico" Non-Profit Quarterly, 2018



↕ The *Guide* considers all types of homes and community configurations and required a robust team of experts, advisors, content developers, and authors.

↘ Yanel leading the 'Building Protection' chapter discussion and group report-out at end of the kick-off workshop.

↓ The *Guide* is organized into chapters, covering the full range of technical housing components, preparedness and community engagement.



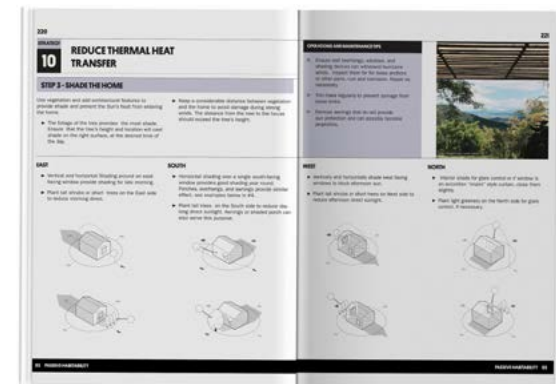
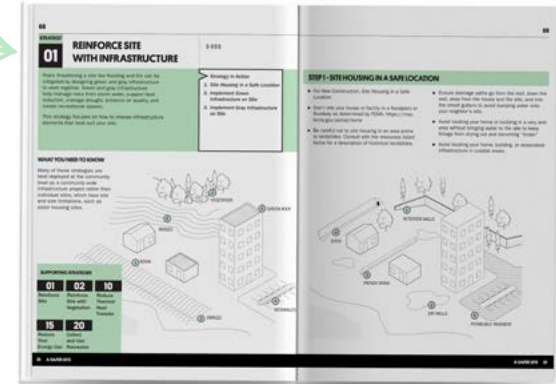
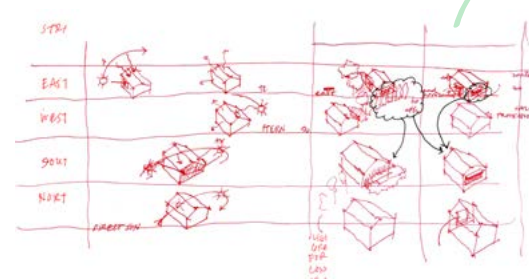
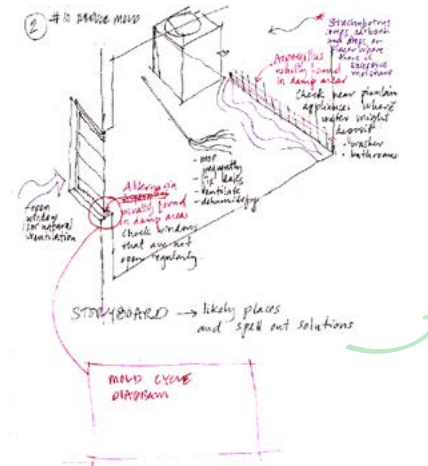
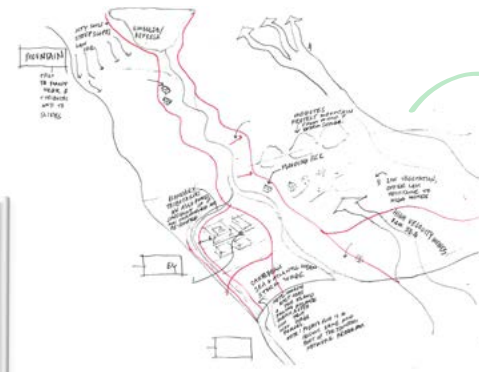
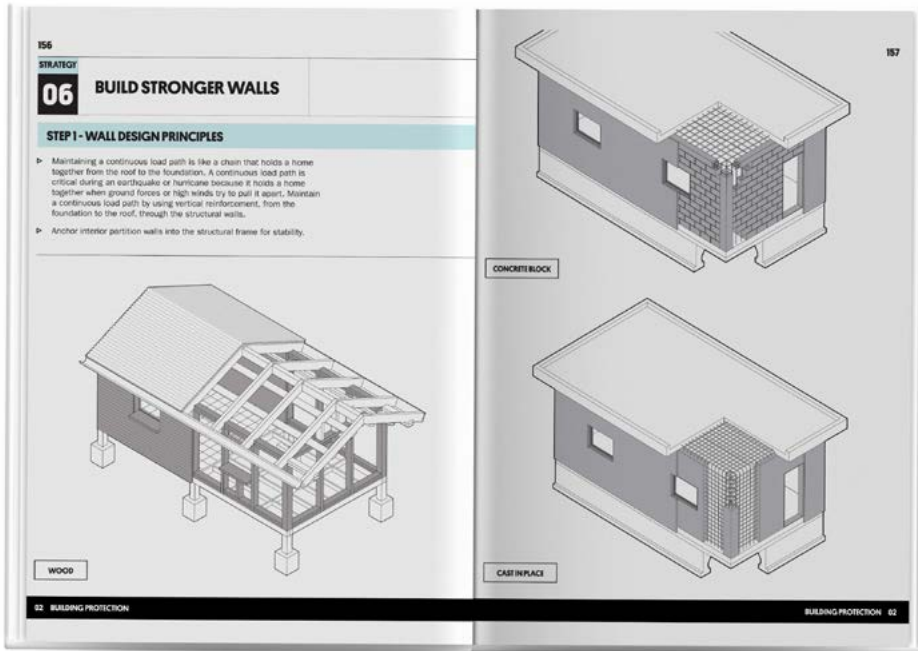
"We were lucky to have Yanel as part of the strategic production team. She brought depth in of knowledge, an ability to make the complex simple, and a key understanding of relevant Island passive systems."

LAURIE SCHOEMAN, SENIOR PROGRAM DIRECTOR NATIONAL INITIATIVES, RESILIENCE / ENTERPRISE COMMUNITY PARTNERS, INC.

Exhibit 3.1 Keep Safe: A Guide for Resilient Housing Design in Island Communities



While Yanel led and co-authored the 'Building Protection' chapter, she contributed strategic advice for the overall Guide. Examples of her sketched contributions to the content development.



“Yanel proposed a logical way to organize building content from siting and soils, to structure, to building envelope and building systems. This was very helpful as an organizational diagram which built upon complexity in a layered way. In many instances she provided sketches to guide the production team which helped us move at a faster pace.”

Laurie Schoeman, Senior Program Director National Initiatives, Resilience / Enterprise Community Partners, Inc.



Role: Co-Author and Project Leader

Firm of Record: Perkins and Will (resilientSEE Alliance Member; pro bono) in partnership with Enterprise Community Partners, ReImagina Puerto Rico, Mercy Corps, and Design Ed 4 Resilience

Design Firm: n/a

Completion: Guide Launch, Train-the-Trainer Phase, October 2019

Synopsis: Development of the *Guide* seeks to create a resource to help communities design resilient community centers to strengthen organizational capacity, promote education year-round and be able to face climate, social and economic changes. The publication offers practical suggestions, including developing community organizations, operational capacity and relevant physical assets to achieve resilience.

“It is with pride and humility that we present this guide to Puerto Rico, with the hope of a resilient future!”

Yanel de Angel, “Introduction,” *A Guide for Resilient Community Center Design in Island Communities*

DECLARATION OF RESPONSIBILITY

I have personal knowledge that the nominee is largely responsible for design, content, and strategic development of the project listed above.

Malu Blázquez Arsuaga

Executive Director of ReImagina Puerto Rico, a program of the Center of a New Economy which evolved from the Resilient Puerto Rico Advisory Commission.

Challenge: After Hurricane María, many established and emerging communities in Puerto Rico realized the importance of having resilient community centers to withstand chronic shocks and stressors. Local government officials and nonprofit organizations that came to aid identified the lack of resilient community centers as a priority to rebuild capacity.

Role: Yanel conceptualized and championed the idea of producing a planning guide for developing community centers. She gathered partners Enterprise Community Partners, ReImagina Puerto Rico, Mercy Corps Puerto Rico, and Design Ed 4-Resilience to collaborate with resilientSEE-PR. She co-authored, developed technical content and managed the creation of the Guide.

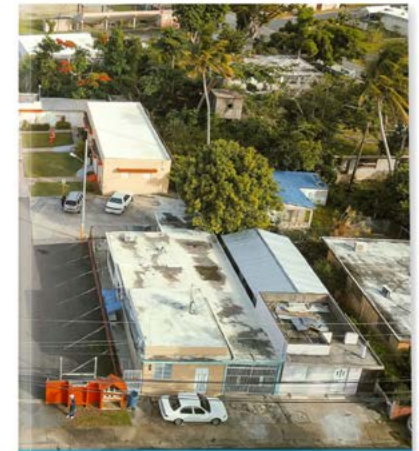
Outcome: The *Resilient Community Center Design Guide* showcases best practices and case studies. The resources will be free to all residents of Puerto Rico, the Virgin Islands and other Caribbean Nations. This timely resource informs planning and design of recovery efforts for the \$19.8 billion fund soon to be available of Community Development Block Grant – Disaster Recovery (CDBG-DR), under the Community Resilience Centers Program.

Publications:

“Community Together: A Guide for Resilient Housing Community Center Design in Island Communities” Recover Rebuild, 2019



↑ resilientSEE toured DAGUAO, a resilient community in Naguabo, P.R. and were hosted by community leaders.



→ *Guide cover featuring the DAGUAO community. Part 3 covers the physical assets of a resilient community center, including spatial program.*

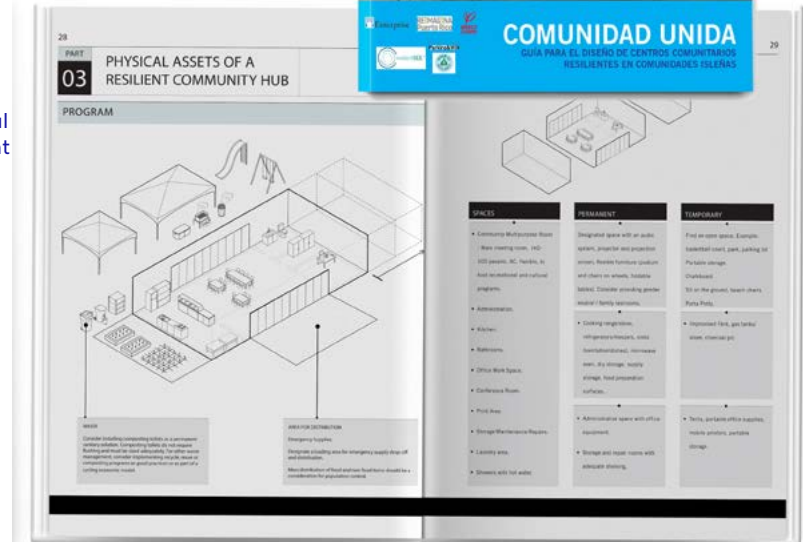
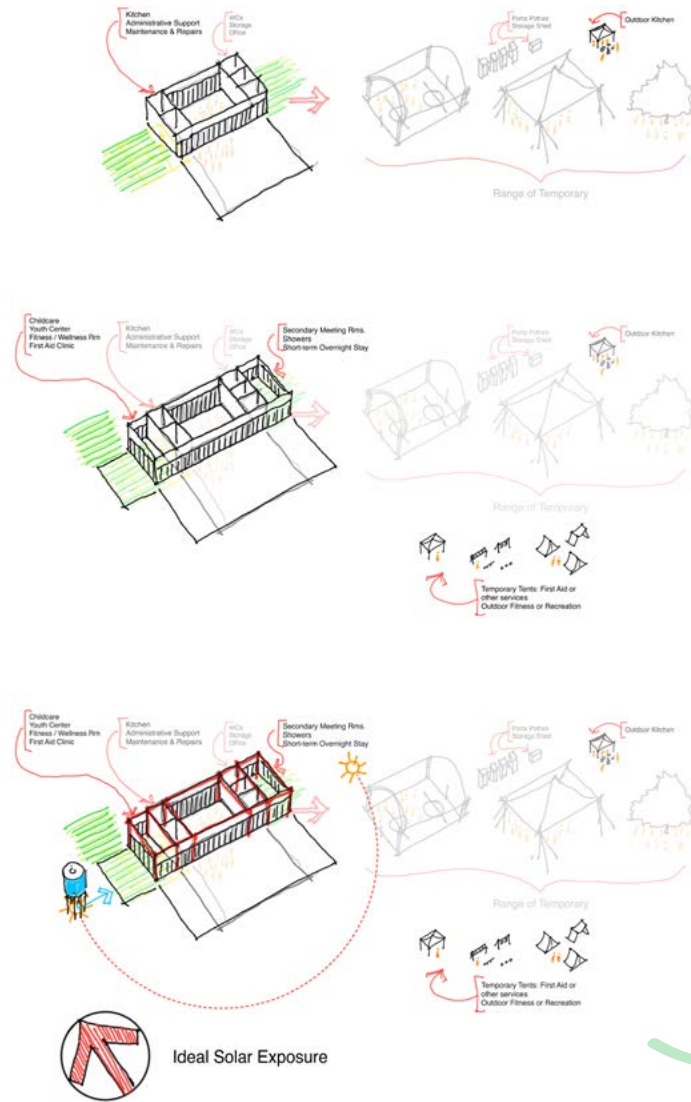


Exhibit 3.2 Community Together: A Guide for Resilient Community Center Design in Island Communities

→ In the creation and conceptualization of the *Guide*, Yanel developed an organizational system to structure the volume and track content. Authorship required a robust collaborative effort between all partners. Part 3 sample.

↓ To accompany the organizational structure, Yanel's hand sketches inform how the *Guide* builds from program to physical assets.

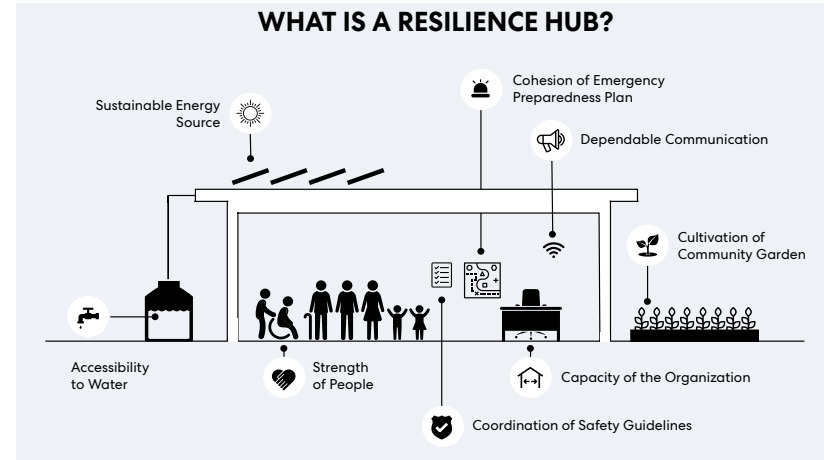


PART 3: PHYSICAL ASSETS TO SUPPORT A RESILIENT COMMUNITY HUB		RANGE	
		Permanent "brick and mortar" solutions	Temporary "essential/basic solutions"
SPACE FOR CONGREGATION	part of community center vs identifying		From temporary structures to first aid,
COMMUNITY MEETING: main meeting room able to hold about 40 to 100 people (air conditioning ideal especially to double as extreme heat relief center)	<p>Designated space</p>	<p>Find an open space, Ex. Basketball court, park, parking lot</p>	
Storage	<p>Equipment Furniture Tools, Gardening / Cleaning / Search and Rescue tools</p>	<p>Designated space Audio, Projector/Screen/Fans Podium, chairs, tables (flexible selection)</p>	<p>Portable storage Chalkboard Sit on the ground, beach chairs Porta Potty</p>
BATHROOMS		<p>WC by gender and 1 gender neutral/fam</p>	<p>Improvised-Tent, gas tanks/ stove, charcoal pit</p>
KITCHEN		<p>Cooking range, refrigerators, sinks (sanitation/dishes), dry storage, supply storage, food preparation surfaces</p>	
SUPPORT	<p>Administration Office Work Space Conference Room Print Area Storage/Maintenance/Repairs</p>		
SPACE FOR SHORT-TERM SHELTER FOR OPERATING PERSONNEL		<p><i>Families are pre-identified to evacuate their vulnerable homes and are guided to transition to a shelter. The Community Center only acts as a shelter for few days for essential personnel.</i></p> <p>Identify level of safety and comfort. See FEMA Design basis, including a risk to wind, flooding, and earthquakes.</p>	
SPACE FOR FIRST AID CLINIC		<p>Physical Health Mental Health-Counseling</p> <p>Either temporary structure like a tent</p>	
PASSIVE SURVIVABILITY			
Spaces located above flood plain		NEED DRAWING SHOWING EXAMPLE	Identify site risks such as flooding elevation or land slides
Ideal Solar Exposure		<p>Ideal Solar Exposure</p>	
Natural Ventilation Harvesting		<p>Prevailing Winds</p>	



→ *Resilient Community Center Design Guide* will inform the design of resilient community centers to strengthen organizational capacity, promote year-round education, and withstand environmental, social, and economic changes. The *Guide* offers practical suggestions, including how to develop operational ability and relevant physical assets—like solar panels and water cisterns—to achieve resilience. It is an in-depth expansion of the Community Development chapter in the *Keep Safe Guide*.

This effort began with in-depth research, visits to community centers across the island, and conversations with locally engaged non-profit organizations. With this information, Phase 2 distilled the most important areas of focus and identified key components of resilient community centers. Phase 3 included validation of findings and final edits.



SYSTEMS OF A COMMUNITY RESILIENCE CENTER

COMMUNICATIONS

- KP4.
- Satellite phone.
- Loudspeaker.
- Wifi/Data access for social media/ community bandwidth access for communication.
- Community-based radio station.
- Analogue telephone life.
- GoTenna mesh system- allows texting and GPS without Internet.

STRUCTURAL

A professional structural engineer should be consulted to verify the building meets code requirements for seismic movement. Depending on location, ensure the structure can withstand forces caused by storm surge produced by hurricane or tsunami events.

ENERGY STORAGE

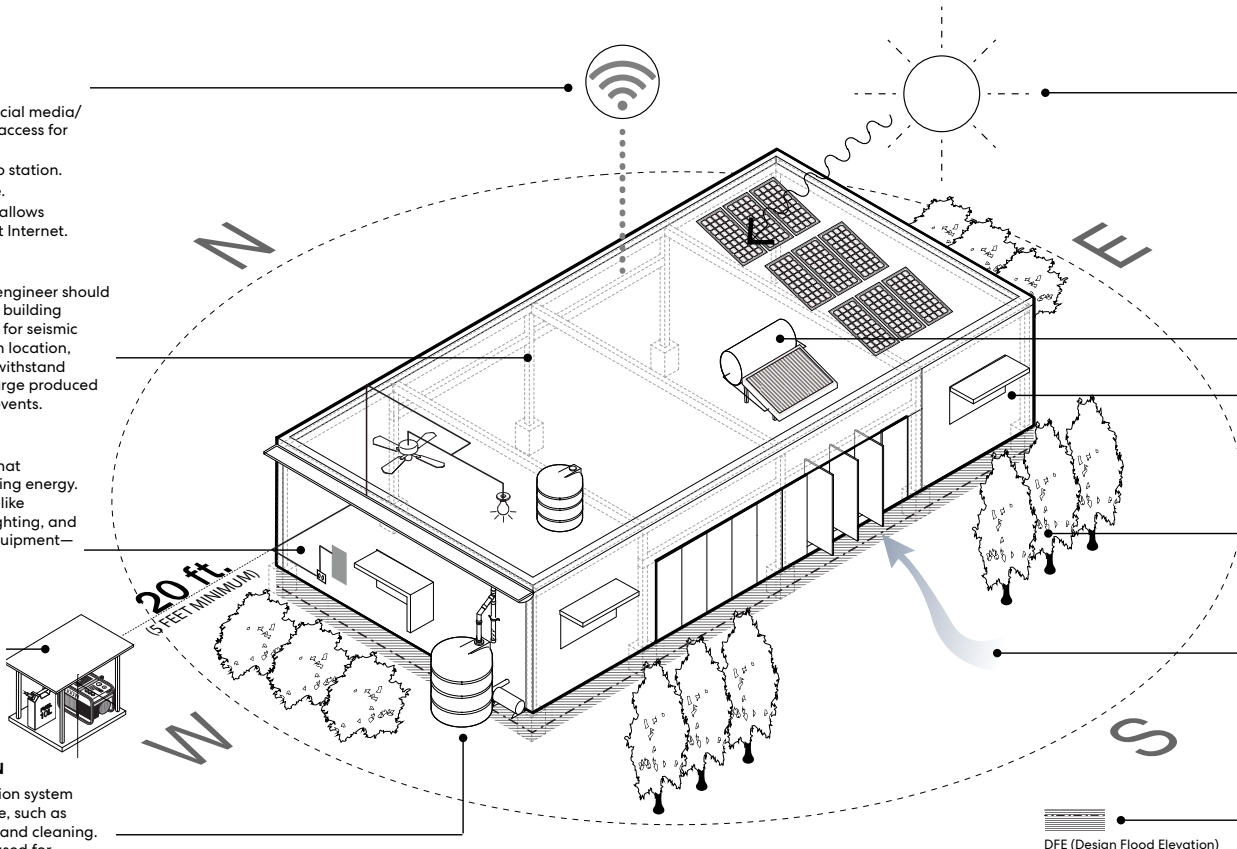
Design a holistic system that includes batteries for storing energy. Ensure that basic needs—like ventilation, emergency lighting, and electricity for essential equipment—is connected.

ENERGY GENERATOR

Have a backup energy generator for emergencies. Ensure that the generator is placed outdoors, at least 20ft from the structure, and is protected from debris.

RAINWATER COLLECTION

Install a rainwater collection system for non-potable water use, such as irrigation, flushing toilets and cleaning. If purified, water can be used for drinking. Rainwater storage tank could be located on the roof or ground.



SOLAR POWER

Install solar panels with batteries (some centers might also have a connection to the grid for selling power during low use or consuming power during high use), and/or other forms of renewable energy. Other recommendations for the community center or individual houses: portable solar charger for mobile phones, solar lamps, portable solar power generators, dedicated solar panels for critically ill patients (for example, requiring dialysis or respirators), solar refrigerators, or back-up diesel generator.

SOLAR THERMAL HEATER

Use solar energy to heat up water.

OPENINGS

Design using operable windows and doors, that allow cross breezes and ventilation. Maximize space by allowing the exterior areas to be used. Shade openings to reduce amount of sunlight and heat gain entering the building.

VEGETATION

Use native vegetation to increase shade, mitigate excessive sunlight, reduce heat gain, and generate breeze, thereby reducing energy costs.

VENTILATION

Design a ventilation system in which air is always circulating through the inhabited space. This ventilation system could be passive with natural breezes or mechanical with active systems, such as air conditioning.

If new construction, place the building above the Design Flood Elevation (DFE). If it is already built, ensure equipment that might get damaged with water is stored above the DFE.

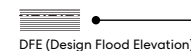


Exhibit 3.3 A Scalable and Replicable Framework for Resilient Planning and Design: Puerto Rico Island-wide and Toa Baja Municipality



Role: Founder & Initiative Leader, resilientSEE-PR / Resilience Strategist and Project Manager

Firm of Record: Alvarez Díaz Villalón, resilientSEE Alliance Member

Design Firm: Perkins and Will, resilientSEE Alliance Member (Pro Bono)

Completion: Phase 1: Assessment, Analysis and Principles, 2018
Phase 2: Synthesis and Phase 3: Final Framework Plan, ongoing

Synopsis: resilientSEE-Puerto Rico—an alliance of academic institutions, private sector and nonprofit organizations—was formed after Hurricane María to provide data-driven, interconnected planning and resource development services for the significant, coordinated, and resilient rebuilding of Puerto Rico’s communities of all scales. The Island-wide analysis and Toa Baja Municipality framework plan is one of the key projects under resilientSEE-PR.

Challenge: The problems that Puerto Rico faces from a climate resilience perspective are complex and can’t be solved in silos. The Island lacks a comprehensive analysis that contextualizes risks and vulnerabilities and a clear framework to systematically and comprehensively tackle complex resilient planning issues. Municipalities, like Toa Baja lack resources to assess how they fit into the larger Island ecosystem and region, and insight into potential solutions that consider the granularity of community needs.

Solutions: Yanel founded resilientSEE-PR Resilience Strategy in the wake of Hurricane María. The resilientSEE alliance is a multidisciplinary team with expertise in economic development, climate justice policy, social science and the built environment on issues impacting energy and water, health, housing and education. They create regional, municipal and community framework plans, with Yanel as project leader, resilience strategist, and housing expert.

The Resilient Framework Plan for the Autonomous Municipality of Toa Baja partners MIT Urban Risk Lab, Álvarez Díaz Villalón, and Perkins and Will in a long-term, island-wide engagement and consensus-building planning process being test-piloted in Toa Baja, which will be launched nationwide and free to municipalities across the nation.

Outcome: The development of a scalable and replicable resilient planning methodology with a S-E-E approach (Social, Environmental and Economic

Resilience) is helping the roughly 89,000 residents of Toa Baja and the larger Island community to build consensus, centralize existing information, identify gaps of data and analysis, synthesize analysis and think strategically about implementable solutions.

Awards:
openDEAR, Perkins and Will, 2018

Publications:
“resilientSEE: A framework to Achieve Resilience Across Scales” Dar Magazine, 17th Issue, co-authored with Maria Roldan, 2019

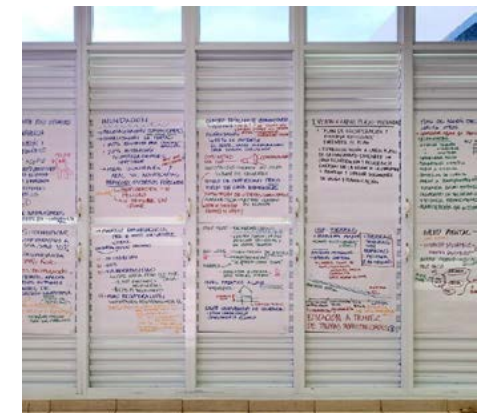
“resilientSEE: A framework to Achieve Resilience Across Scales” Perkins and Will, Perspectives Blog, 2019

“resilientSEE: A framework to Achieve Resilience Across Scales” Building Design + Construction, 2019

“Building a More Resilient Puerto Rico with Clean Energy” Union of Concerned Scientist / Podcast: Got Science?, Episode 61, podcast with Yanel and resilientSEE collaborator Ramón Bueno, 2019

“Power of Good” podcast interview with Jake Murray. Yanel shares the platform’s interdisciplinary “S-E-E” approach and explains importance of a community-driven and participatory recovery process.

“How Architects Are Helping Communities in Puerto Rico Rebuild” Metropolis, 2018



↑ Yanel co-leading day-long kick off workshop with MIT Urban Risk Lab at the Municipality of Toa Baja. In an earlier visit, resilientSEE partners meet with Toa Baja’s Mayor and his team to formalize a longterm collaboration with them.

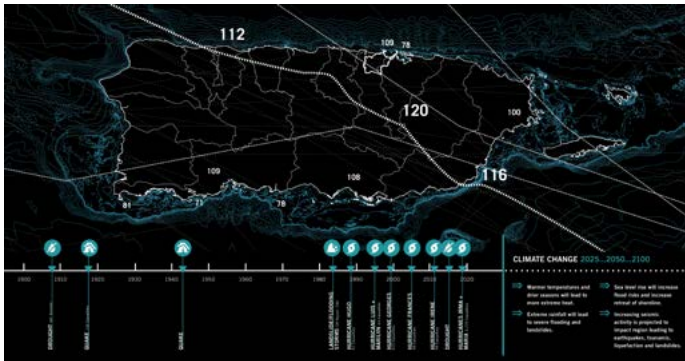
DECLARATION OF RESPONSIBILITY

I have personal knowledge that the nominee is largely responsible for conceptualizing of the resilientSEE platform, and project leader and advisor for project listed above.

Edgar Gómez Cintrón

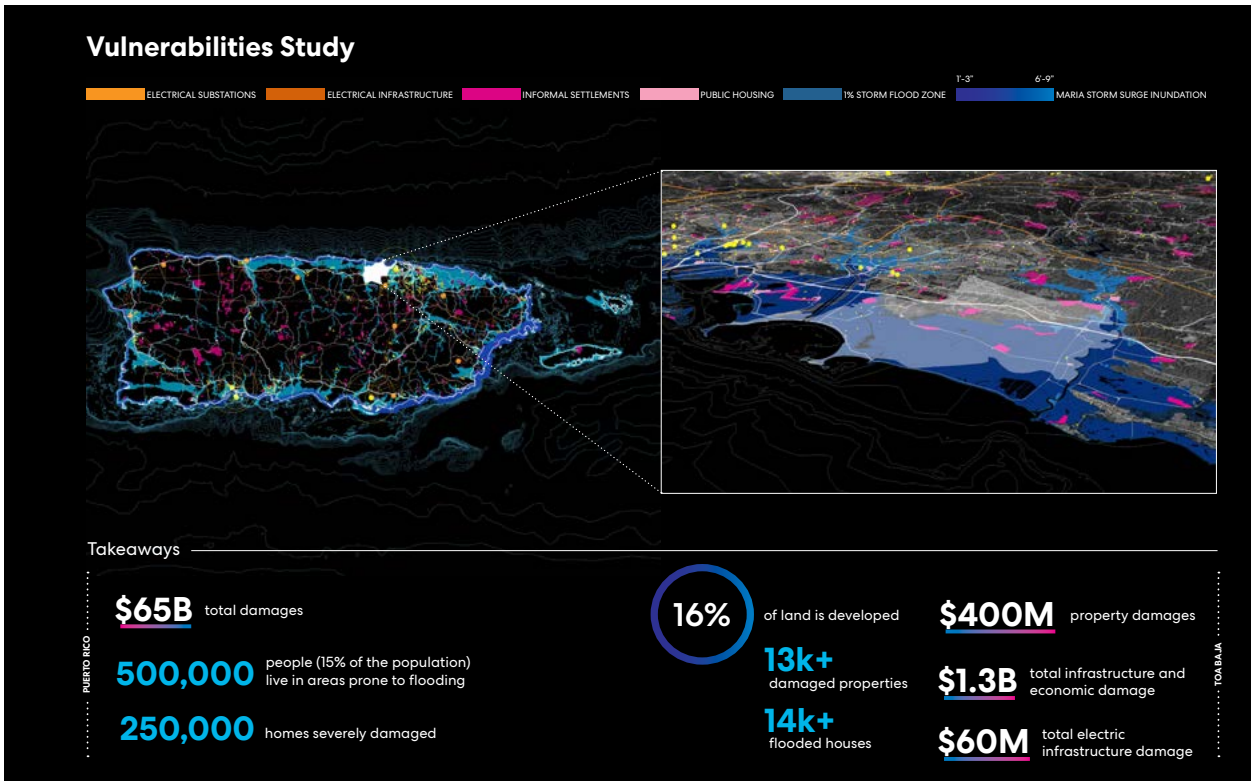
Community Outreach Director, Autonomous Municipality of Toa Baja
Advisor, Instituto Municipal de Cooperativismo y Participación Ciudadana

Exhibit 3.3 A Scalable and Replicable Framework for Resilient Planning and Design: Puerto Rico Island-wide and Toa Baja Municipality



← Illustration of Puerto Rico's natural events since 1900, including major hurricanes, droughts, earthquakes and landslides. With climate change, these events are becoming more intense and frequent.

↓ A data driven / scientific process founded on the principles that all systems are connected. Begins with understanding vulnerabilities and risks, dissecting the problem through different lenses, and overlapping these lenses to diagnose problems and find solutions through synergies.



→ This collaborative analysis, Island-wide and Municipality focused, included the following lenses—topography, hydrology, ecology, emergency services, infrastructure and development (economic).

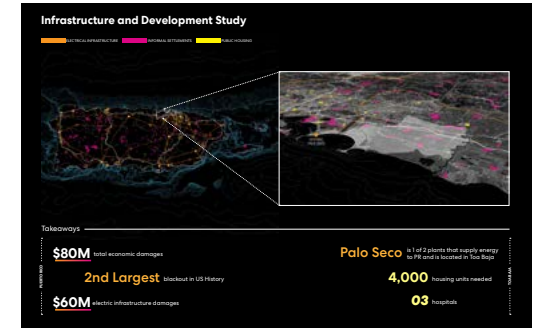
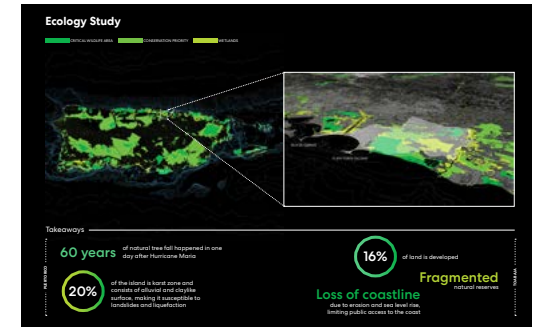
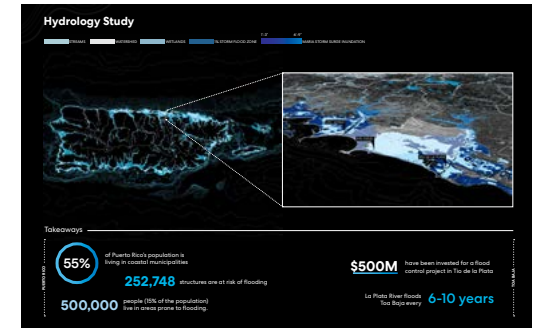
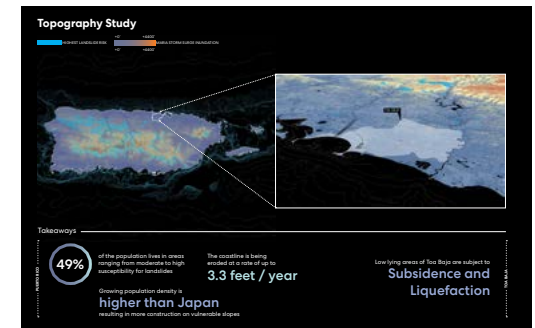


Exhibit 3.3 A Scalable and Replicable Framework for Resilient Planning and Design: Puerto Rico Island-wide and Toa Baja Municipality



↑Hurricane María satellite view as it made landfall on Puerto Rico. A damaged home after the hurricane. A drone view of Toa Baja's Barrio Ingenio from late 2018 still shows blue tarps being used as roofs on many homes.

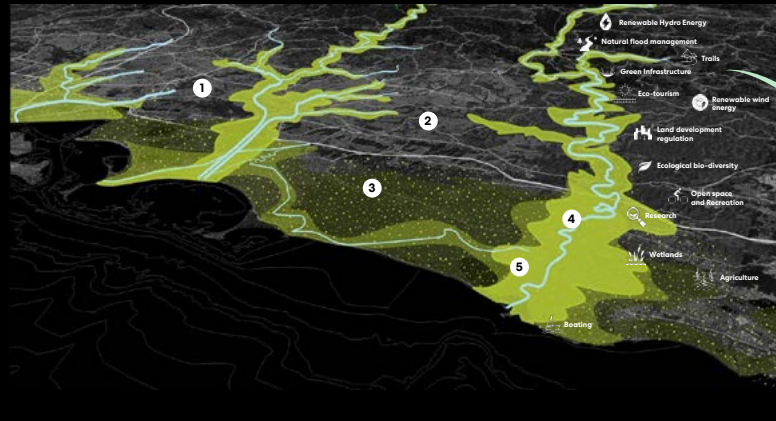


↑After her first visit to Toa Baja, Yanel received this text message—a welcoming gesture—from Deserie Pearlman, Division of Economic Development and Tourism, Autonomous Municipality of Toa Baja.

Two Driving Principles for Toa Baja Moving Forward:

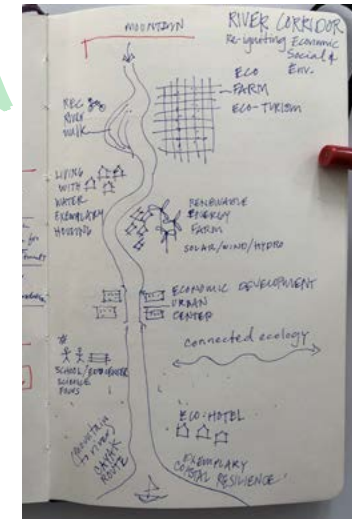
Restore The Ecology

- 1 **Cultural and Economic Transformation**
Ecological corridor for recreation, education, tourism, and increased employment and development opportunities
- 2 **Green Infrastructure**
Connect the ecology with green corridors of mobility and infrastructure
- 3 **Ecological Landscape**
Performative landscapes that provide ecological and flood protection benefits
- 4 **Regeneration of the River Corridor**
Enhance flood resilience and water quality. Restore a functional and diverse ecosystem
- 5 **Open Spaces and Recreation**
Create spaces for discovery and play that develop an identity for the region.



Develop a Social and Civic Infrastructure

- 1 **Walkable Communities**
Robust, multi-modal corridors and design guidelines to promote a walkable community
- 2 **Civic Anchors and Community Hubs**
Civic amenities, emergency shelters, community assembly spaces, and culture and art centers as urban destinations
- 3 **Social Health and Wellness**
Relocate developments from critically vulnerable zones and low-lying flood plains
- 4 **Urban Centers and Schools**
Support mixed uses and walkable communities and enliven public realm.



←↑ From the vulnerability analysis, two key principles emerged that will influence decision making for the Municipality. Under 'Restore the Ecology,' the funded canalization of La Plata River is critical. In a brainstorming session with collaborators, Yanel sketched a programmatic idea to activate the River, which was presented to the Mayor and his team, who are enthusiastic about the economic development it would bring to the area.

Exhibit 3.4 A Replicable Process: Villas del Sol Community Resilient Framework Plan



Role: Project Leader, Resilience Strategist, and Housing Expert

Firm of Record: Álvarez-Díaz & Villalón®, Architect Elio Martínez Joffre (community engagement)

Design Firm: Perkins and Will, resilientSEE Alliance Member (Pro Bono)

Completion: Phase 1: Conceptual Framework early 2019
Phase 2: Synthesis and Final Framework Plan in progress

Synopsis: A partnership between Sol es Vida, a nonprofit cooperative of Villas del Sol community and resilientSEE-PR collaborators, prioritizes design and placement of nonexistent infrastructure: storm water management, potable water, electric, sewage, and green-open space. The collaborative alliance conducts a co-authored process to ensure communities are strategic partners in creating solutions that align with their needs, climate and cultural context.

Challenge: A Dominican Republic immigrant community—aggressively removed from invaded land in Toa Baja, Puerto Rico—had been given property rights in Villas de Sol. The previous Mayor promised infrastructure that never came. Despite this, the Dominican families settled, but remain extremely vulnerable to climatic events. In addition to needing infrastructure, they lack shaded greenspace and open space for assembly and recreation.

Solutions: As resilientSEE-PR team leader (working pro bono), Yanel and local architect Joffre led the development of an open space framework that includes major streets reforestation, a flora and fauna loop, agricultural fields and a cultural and recreation heart.

Outcome: The engagement provides essential 'due diligence' analysis; a vetted, contextually unique framework for needed systems and for community-building; and self-advocacy resources to help the community to procure public or grant funding to gain fully-functional infrastructure, recreation/ green space, and public space for 170 community members (approximately 50 families).

Publications:
"Villas del Sol Resilient Framework Plan Report"



↑ First meeting with community engagement architect, community leader, and a volunteer.

→ Team Directory—complete team of pro bono consultants assembled to serve the community including planner, architect of record, community engagement architect, and mapping, structural, water, energy, hydrology/environmental/coastal engineers, and group of reviewers and advisors.

↓ The community lacks infrastructure. Existing roads are mainly dirt, some poorly paved. Families have been rebuilding concrete or wood houses elevated from the ground. Debris removal is an ongoing struggle for many residents.

Villas del Sol Resilient Framework Plan			
Role	Name	Organization	Contact
Project Leader	Yanel de Angel Salas	Sol es Vida	301-464-8888
Community Engagement Architect	Elio Martínez Joffre	Álvarez-Díaz & Villalón®	787-484-1111
Architect of Record	Perkins and Will	Perkins and Will	312-467-1000
Community Engagement Architect	Yanel de Angel Salas	Sol es Vida	301-464-8888
Planner	Yanel de Angel Salas	Sol es Vida	301-464-8888
Structural Engineer	Yanel de Angel Salas	Sol es Vida	301-464-8888
Water Engineer	Yanel de Angel Salas	Sol es Vida	301-464-8888
Energy Engineer	Yanel de Angel Salas	Sol es Vida	301-464-8888
Hydrology/Environmental/Coastal Engineer	Yanel de Angel Salas	Sol es Vida	301-464-8888
Group of Reviewers and Advisors	Yanel de Angel Salas	Sol es Vida	301-464-8888



DECLARATION OF RESPONSIBILITY
I have personal knowledge that the nominee is largely responsible for design and project leader of the project listed above.

Ricardo Álvarez-Díaz, AIA
Co-Founder & CEO
Álvarez-Díaz & Villalón®

Exhibit 3.4 A Replicable Process: Villas del Sol Community Resilient Framework Plan



→ A passive stormwater system discharges into bioswales with a wetland as a backup strategy.

↓ The open space framework plan introduces trees in main streets, invests in a recreational loop of flora and fauna, and identifies a clear open 2 'heart' adjacent to the community center.

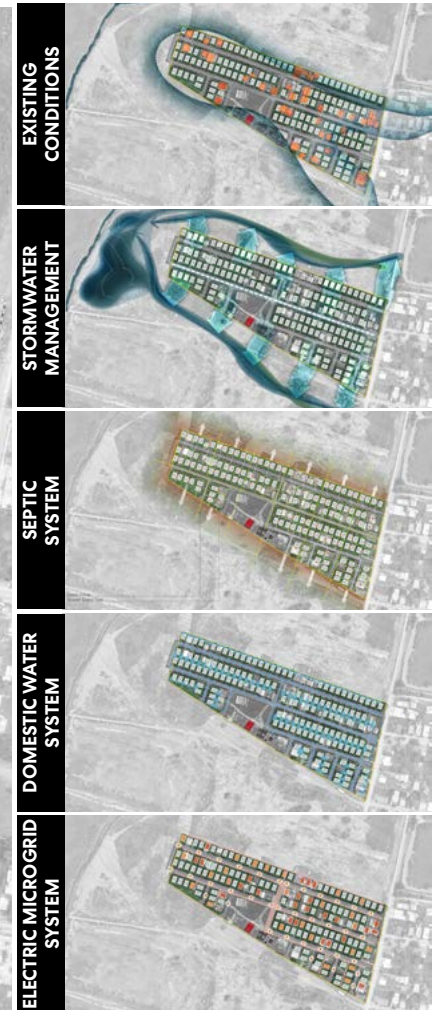
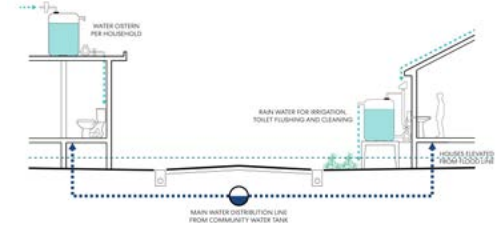


Exhibit 3.5 De-stigmatizing Mental Health in the Latino Community

National Alliance of Mental illness (NAMI), Metro Boston Latino



Role: Volunteer

Firm of Record: n/a

Design Firm: n/a

Completion: 2008-2012

Synopsis: This grassroots nonprofit organization seeks to improve the quality of life for individuals with serious mental illnesses and that of their families. The Boston metro Latino population suffers from the stress of overwork, isolation from family separation, and enormous social barriers, all affect their mental health immensely. Yanel's influence in the local Latino community combined with her project management expertise facilitating the joining of disparate groups enabled her to orchestrate the partnerships between service providers, medical experts and patients ultimately making NAMI Latino a success.

Challenge: Reach a wider audience of the Latino population, which statistically lacks access to mental healthcare. Destigmatize mental health in the Latino population through education, community outreach and family to family support.

Actions: Yanel became involved with the NAMI Latino Metro Boston chapter, launching or reinvigorating the following programs:

Live radio co-host: from first show, Yanel shaped program agenda and interview schedule for this statewide broadcast that included 156 total broadcasts, invited service providers, medical professionals and people with mental illness to directly share their experiences to a Latino immigrant population (approximately 60,000 in Boston).

Newsletter editor: editor and graphic designer of bi-monthly publication working with NAMI Latino Massachusetts to identify stories of resonance and NAMI Latino Metro Boston chapter to advertise events. Developed a digital mailing list to reach larger population. Readership for the 18 publications included 100 mailed newsletters, 95 electronically distributed, and over 100 printed for distribution to healthcare providers.

NAMI Latino Mental Health Fair co-organizer: identified service providers to attend event and provide educational material, promoted event and provided network opportunities for Latino chapter.

Outcome: These concurrent activities created a tremendous energy in Boston's Latino community, growing Latino participation by three-fold, and thereby providing more families direct connection to service providers; engaged the Latino community to place greater focus on mental health education, family to family support and access to service providers and medical

care. Today, the radio show continues under another name, hosted by a service provider and medical professional who were inspired to take it on after been regular guests in the original radio show.

Publications: 18 Newsletters published between 2009 to 2012 and 156 live radio shows were recorded between 2009 to 2012.



↑ Yanel and radio co-host Marcos Rosenbaum on a live radio show.

The collage features several newsletters and promotional materials for NAMI Latino Metro Boston. At the top left is the 'Boletín Informativo Junio 2010' calendar page. Below it are two pages from the 'MI educación sobre la "negación"' newsletter, discussing denial in mental health. To the right are two pages from the 'Boletín Informativo Junio 2010' newsletter, including an invitation to a 'Feria de Salud Mental' (Mental Health Fair) on June 12th at Our Lady of Lourdes Church. At the bottom left is another 'Boletín Informativo Junio 2010' newsletter page with a '¿Qué puede hacer una mujer?' article. At the bottom right is a 'Boletín Informativo Junio 2010' newsletter page with an 'Anunciadores' (Advertisers) list.

↑ Newsletter and Mental Health Fair promotional flyer samples.

← Live and weekly 'NAMI Latino y La Comunidad' Radio Show collateral for fundraising.

DECLARATION OF RESPONSIBILITY
I have personal knowledge that the nominee is largely responsible for the work of the project listed above.

Laurie Martinelli
Former Executive Director
NAMI Massachusetts

Exhibit 3.6 Collocation of Diversity Programs and Services

Lory Student Center, Colorado State University



Role: Project Architect

Firm of Record: Aller, Lingle, Massey Architects P.C.

Design Firm: Perkins and Will

Completion: August 2014

Sustainability: LEED Gold

Synopsis: While the Center is renowned for diverse programs and student pride, its rejuvenation has fostered even greater spirit among students and alumni. The collocation of Student Diversity and Program Services (SDPS) was critical and included:

- Asian Pacific American Cultural Center
- Black/African American Cultural Center
- El Centro Latino
- GLBTQ2A (Gay, Lesbian, Bisexual, Transgender, Queer, Questioning and Ally)
- Native American Cultural Center
- Resources for Disabled Students
- Women and Gender Advocacy Center

Challenge: Find synergies between programs through dialogue and empathy to collocate those who were physically siloed throughout the building and lacked common space to provide joint student programming.

DECLARATION OF RESPONSIBILITY

I have personal knowledge that the nominee's firm executed project, and responsible for design of the project listed above.

Dr. Mike Ellis

Assistant Vice President for Student Affairs & Executive Director, Lory Student Center, Assistant Professor, School of Education

Role: Yanel facilitated dialog between Diversity Program Directors to find synergies to inform the design solution; she led to the successful collocation of programs as well as sustainability features that have increased the Center's appeal and attracted activity:

- A collocation 'neighborhood' with double height interior 'street' common space,
- Facing all programs towards the interior street with equal 'brand' presence,
- Resolving Native American program's reluctance to move by providing outdoor access for smudging ceremonies,
- Increasing overall square footage with expanded daylight access and new adjacencies to enhance collaboration,
- Reconciled privacy needs for Women and Gender Advocacy Center and GLBTQ2A with public and confidential entries.

Outcome: Collocation of the Diversity Programs resulted in:

- Student Diversity and Program Services (SDPS) **shared programming** include: 1) student staff orientation and training; 2) celebration of awareness months, weeks and days traditionally associated with diverse populations (Women's History Month, Black History Month, LatinX Heritage Month, LGBTQ Lavender Graduation, and International Women's Day, to name a few); 3) combined SDPS Graduation program.

- Number of **diverse first-year students coming to CSU increased from 24% pre-renovation to 31% this fall.** University leadership believes the new SDPS offices play a critical role in attracting diverse students and supporting their success at CSU.
- A **substantial increase in traffic:** pre-renovation traffic averaged 14,000 visits/day; post renovation traffic averages 22,000 visits/day. Annual traffic count is now approximately 4 million visits.

Awards:

b.o.b Forum Design Award for Education & Research, IIDA Georgia, 2016

Facility Design Award of Excellence, ACUI, 2015

Publications:

"Stay True to your Roots: Reimagining a Mid-Century Student Center" Perkins and Will, Perspectives Blog, 2019

"Ms. de Angel Salas' compassion and ability to truly listen to user needs captures and produces a vision that transforms spaces well beyond the specified programmatic needs."

DR. MIKE ELLIS, ASSISTANT VICE PRESIDENT FOR STUDENT AFFAIRS & EXECUTIVE DIRECTOR, LORY STUDENT CENTER



↑ The Diversity Suite design centers around a neighborhood with an interior street. Diversity is a theme that extends throughout the 230,000 sf facility. Below is a student engagement session.

↓ From the free speech plaza at the east entry, users are welcomed in with seven collocated student diversity programs and services.

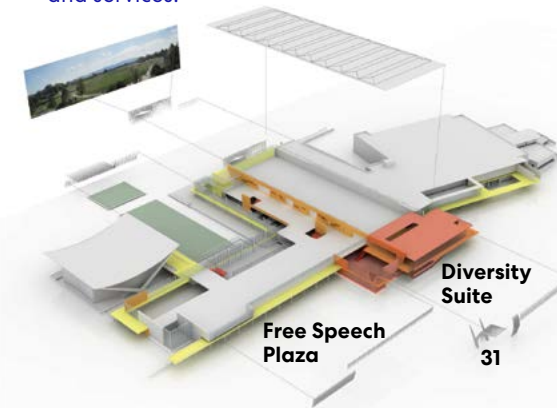
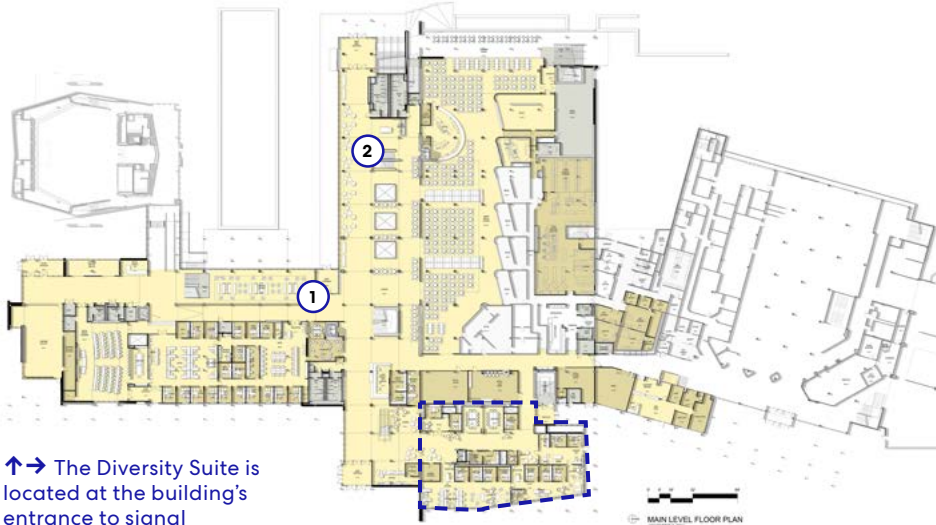
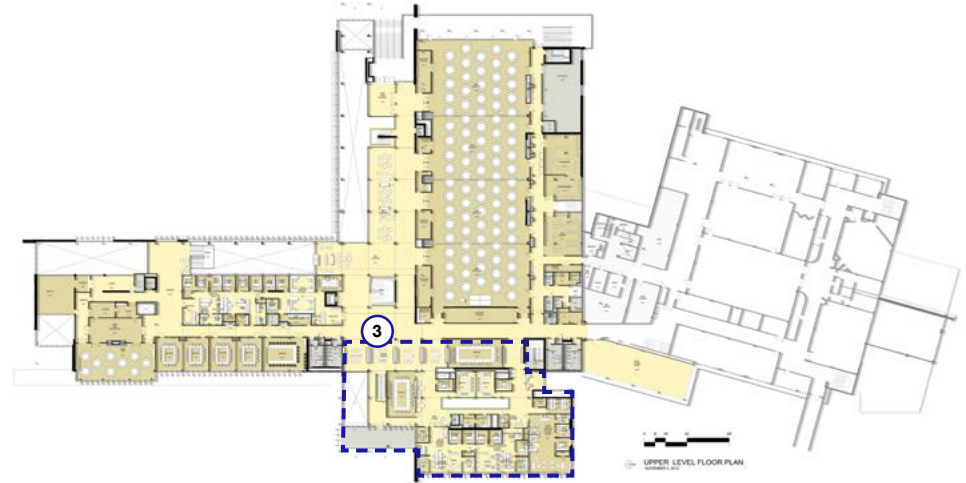


Exhibit 3.6 Collocation of Diversity Programs and Services

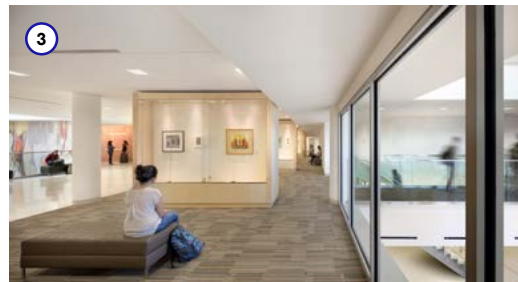
Lory Student Center, Colorado State University



↑→ The Diversity Suite is located at the building's entrance to signal everyone is welcome.



↑ The original sunken lounge was transformed into a double-height space purposefully oriented to preserve views to the mountains which contain a painted 'A'—for agriculture, a heritage of the Land Grant institution.



↑→ The Land Grant wall became an organizational element to clarify circulation from East to West. The story contained within extends the diversity and inclusion message throughout the building.

↑ A rotating exhibition of artifacts from ethnic groups represented within the Diversity Suite is located on second floor.

“Ms. de Angel Salas’s dedication to listening allowed for a compassionate approach which positively resonated with our students, faculty and staff. For example, when our Native American Cultural Center expressed a desire for their new location to be in same geographic area as their previous location, and near an external balcony for their sage ritual, she made this a priority.”

DR. MIKE ELLIS, ASSISTANT VICE PRESIDENT FOR STUDENT AFFAIRS & EXECUTIVE DIRECTOR, LORY STUDENT CENTER

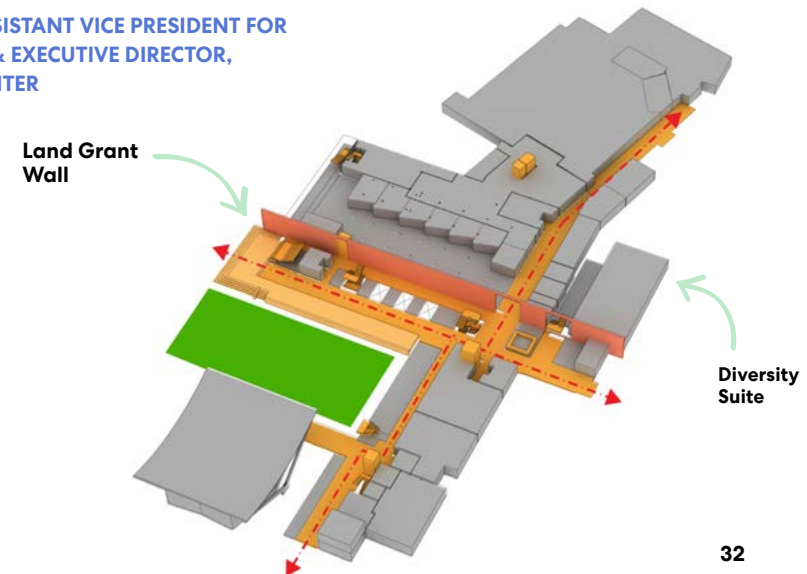


Exhibit 3.7 A Model for Academic Success and Affordability in Residential Life

Living-Learning Commons Residence Hall, Keene State College



Role: Residential Planner, Sustainability Expert and Project Manager

Firm of Record: Perkins and Will

Design Firm: Perkins and Will

Completion: August 2016

Sustainability: Carbon Neutral / ZNEB Ready

Synopsis: For this 250-bed, 85,000 sf First Year Residence Hall, a Living-Learning Commons creates a more seamless transition to college life by providing an environment where faculty and residential staff collaborate to nurture communities that help students develop friendships and succeed academically, with 11 different communities providing opportunities for students to pursue academic and co-curricular interests in a safe, supportive and dynamic environment.

Challenge: Design to reconcile the College's concerns around student diversity and inclusion, bedroom-unit affordability, creation of cohesive communities and integration of academic programs without intruding on resident privacy.

DECLARATION OF RESPONSIBILITY

I have personal knowledge that the nominee's firm executed project, and responsible for design of the project listed above.

Jay Kahn, Honorary AIA

Former VP of Finance and Planning, Keene State College / Current NH Senator for District 10

Actions: Yanel led College leadership, faculty and student engagement sessions to counter the College's concerns resulting in:

- Small double rooms and singles encourage socialization;
- Communities are located in 3 wings and on four scales: wing, floor, building, and precinct.
- A vertical social Hub connects the building-scale community, promoting physical activity and engagement between floors while acting as an iconic campus beacon,
- A controlled access door separates ground level academic space from the residential levels.
 - The ground level acts as the mixer, where students, faculty, and staff can connect academically and socially;
 - Upper-level dedicated quiet study space and a floor-level community space that connects through a transparent, vertical social Hub;
 - A gender inclusive bathroom in every level, 3 on ground level.
 - Horizontal approach to learning; "wall-less" and "test kitchen" classrooms for new pedagogy.

Outcome: An inclusive and affordable residence hall focused on student academic success. Student survey and focus group interviews revealed:

- 76% of students believe the LLC has contributed to their overall academic success.
- 84% are satisfied with condition of the residence hall

- 81% are satisfied with the sense of community in their LLC hall
- Most student living believe the LLC creates a sense of community and makes it easy for them to study
- Student Academic Performance: students living in the LLC have the highest GPA among all freshmen and the second highest % of student retention.

Awards:

Honor Award, Excellence in Architecture Design Awards, AIA New Hampshire, 2017

Citation, Honor Awards for Design Excellence, Boston Society of Architects, 2017

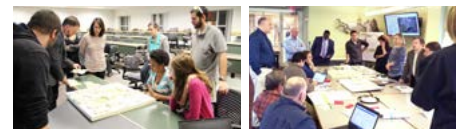
Publications:

"Keene State earns award for new living-learning building" Union Leader, 2017

"American Institute of Architects Recognizes Keene State Living Learning Commons" Keene State College blog, 2016

"Keene State's New Living Learning Commons Engages New Students" Keene State College blog, 2016

"The Global Village: Improving Intercultural Experiences at Keene State College Through Living/Learning Communities" SIT Digital Collections, 2015



↑ Presenting design concepts to Student Senate. A day-long workshop with client.

"The new LLC helps first-year students pursue their interests and engages them in activities and conversations that help them to achieve their academic goals while making connections in the classroom and beyond. The communities in this building help to chart a path forward for students during college and after graduation."

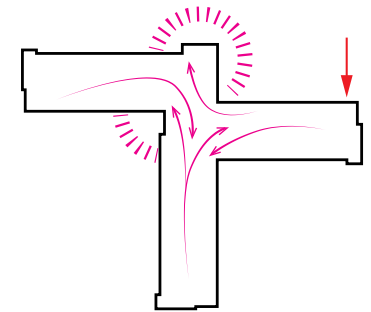
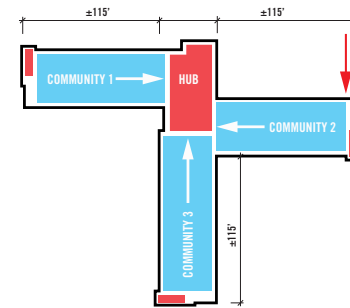
**ANNE HUOT, PRESIDENT,
KEENE STATE COLLEGE**



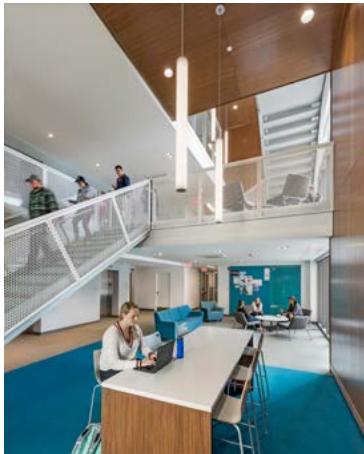
↑ The building fosters interior and exterior connections to engage communities inside and in the larger campus.

Exhibit 3.7 A Model for Academic Success and Affordability in Residential Life

Living-Learning Commons Residence Hall, Keene State College



↑The wings of the LLC physically connect the three communities to the 'central hub.'



↑The massing of the LLC represents three wings coming together in a central social space called 'vertical hub.' Each wing is sized for a ratio of 1 Residential Assistant per 30 students—an ideal grouping for forming cohesive and thriving communities.

Exhibit 3.8 Growing Pipeline of Women Leaders in the Profession

AIA/BSA Women in Design Mid-Career Mentorship Program



Role: Founder, Co-chair & Member, Women in Design Excellence in Design Awards Committee

Firm of Record: n/a
Design Firm: n/a
Completion: 2017-present

Synopsis: With the profession experiencing a gender equity gap in positions of leadership, Yanel conceptualized the mid-career mentorship program and gathered support from other women leaders in the program's creation.

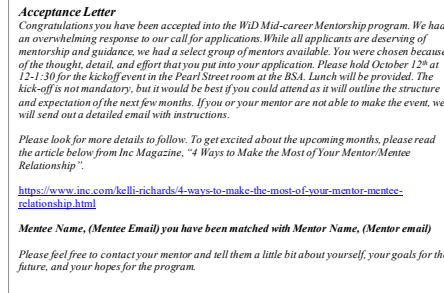
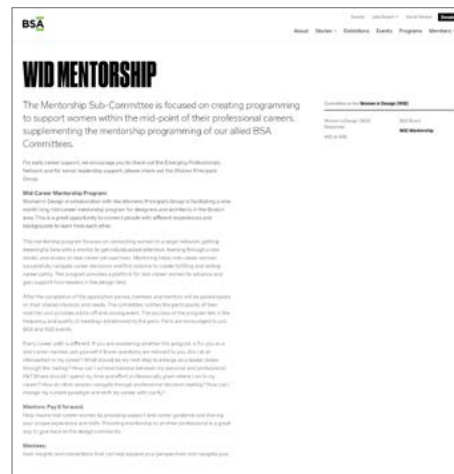
Challenge: Enable more women to gain leadership positions in architectural firms.

Actions: Inspired by a CREW mentorship program in which she served as a mentor, Yanel founded AIA / BSA's WiD committee. She serves as the program's cochair and a mentor and uses her industry network to coordinate matches between mentor-mentee and peer to peer. As part of the WiD Principals Group, Yanel acts as a bridge connecting women leaders (mentors) to emerging leaders (mentees).

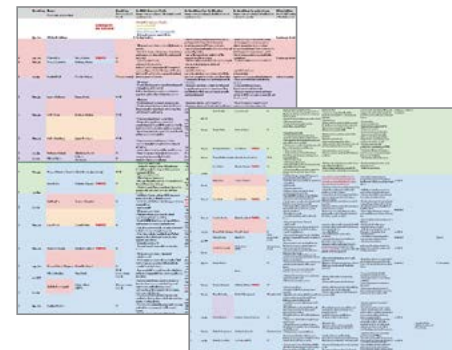
Outcome: Three consecutive years of 30-plus matches between mentor-mentee and peer to peer in the AIA/BSA has presented a replicable mid-career mentorship program adopted by other AIA chapters, including Springfield Missouri and Columbus Ohio.

Role: Conceptualization of the mid-career program, committee co-founder, mentor, WiD Principals Group representative within committee

Publications:
 "Retaining Women in Architecture: Four Perspectives" Architect, 2018



- ↑ Match email announcement.
- ↗ Discussing final logo before program launch.
- Meeting on the program and outreach.
- ← BSA's website, architects.org, listing of the WiD Mentorship program.
- ↓ Sample document shows applicant tracking and matching.



"My mentor worked with me to develop more effective tactics for project management, empowered me to take on a leadership role on sustainability in my office, and provided valuable perspective on how to manage my energy in and out of the office."

Anonymous Survey Respondent

DECLARATION OF RESPONSIBILITY
 I have personal knowledge that the nominee is largely responsible for program conceptualization and establishment of the project listed above.

Emily Paparella, AIA, LEED AP BD+C, CPHC
 Vice President
 Elkus Manfredi Architects

"I was fortunate to have a formal mentoring relationship with Yanel, which proved to be a significant catapult for my career. With Yanel's advice and encouragement, I negotiated for and received a promotion to Vice President in my firm—recognition I'd certainly earned over my 10+ years at the firm but had been unable to realize prior to her support and guidance."

EMILY PAPARELLA AIA, LEED AP BD+C, CPHC, VICE PRESIDENT, ELKUS MANFREDI ARCHITECTS

Exhibit 3.9 Recognizing Exemplary Women to Inspire the Next Generation

Women in Design (WiD) Award of Excellence



PROGRAM

AGENDA

Welcome and Lunch

Awards

Doreen Crosby, Principal
Crosby Schlessinger Ombidage
presented by Carol Burns, FAIA, LEED AP
Principal, Taylor and Burns Architects

Uma Ramamathan, AIA, Principal
Shepley Bu
presented by
Partner, de

Renée Loth
Architect
presented by
Senior Prin

SPONSORS

PLATINUM

Spending Brick Company, Inc.

DOREEN CROSBY

Doreen Crosby is a founding Principal and Director of Landscape Architecture at Crosby, Schlessinger, Smithbridge (CSS) in Boston, MA. She has over 35 years of design experience, including hundreds of constructed projects in the Boston metropolitan area.

UMA RAMANATHAN

Uma Ramamathan is a Principal at Shepley Bulfinch with more than 25 years of experience in healthcare planning and design. Her grasp of the rigorous demands of medical staff has been invaluable to her clients, as is her ability to work effectively with high-level medical faculty and administrators to build consensus among diverse viewpoints.

RENÉE LOTH

Renée Loth is editor of ArchitectureBoston, the BSA's quarterly "ideas" publication, and a regular columnist for The Boston Globe.

↑ → ↓ Redesign of all WiD Awards program collateral including the program, poster, and bookmark highlighting both current and past award-winners.

Role: Co-Chair & Member, Women in Design Award of Excellence Committee

Firm of Record: n/a

Design Firm: n/a

Completion Date: 2016-present

Synopsis: The award recognizes individuals who have built their life around design, whose work exemplifies the best of process and product, and who uses their professional achievement to give back to the world of design and the community at large. The award recognizes 2 to 3 exemplary women annually.

Challenge: AIA / BSA needed to revitalize the almost 20-year old award process, engage more practitioners and increase attendance at the award ceremony.

Action: Yanel joined the Committee as co-chair and began co-leading a process to update the award submission form, revamp the website, relaunch all related graphic design collateral, and rectify key procedural issues of the program.

Outcome: The quality and quantity of submissions have increased and represent a broader diversity of candidates. The award-day venue has been sold out for three consecutive years.

Role: As co-chair Yanel co-leads includes the full awards cycle from call for submissions, promotion, gathering submissions, organizing and facilitating the jury, creating the award day program, overseeing graphic design of collateral, and co-hosting the award celebration.

Publications:
 "Women in Design Award of Excellence: 20th Anniversary"

"Women in Design LinkedIn Group"

"Women in Design Facebook Group"



DECLARATION OF RESPONSIBILITY

I have personal knowledge that the nominee is largely responsible for management and improvements to the program of the project listed above.

Felice Silverman, FIIDA
 Principal, Silverman Trykowski Associates
 WiD Award of Excellence committee co-chair

WOMEN IN DESIGN AWARD OF EXCELLENCE / PAST WINNERS	
2018	Renée Loth
2017	Doreen Crosby Uma Ramamathan AIA
2016	Kathleen Mitchell, LEED AP Jean Caron, FAIA, LEED Fellow Mehin Noor, AIA, FAIR Katherine Tompson, Honorary Awardee
2015	Ann Hawley, Hon BSA Mikyoung Kim
2014	Wan Li Neil O'Hara Lana A. Wernick, FAIA
2013	Kathleen Luegich, FAIA Carole C. Wedge, FAIA
2012	Gail Sullivan, FAIA Janet Eichenman
2011	Janina Roy, AIA Elizabeth Pearce, FAIA
2010	Shelia Kennedy, FAIA Laura Soltero, ASLA
2009	Dr. Katherine Sloan Lynn Wolff, FAIA
2008	Elizabeth Ericson, FAIA Diane Geronzi, FAIA Henry Anand, Hon. AIA/BSA Barbara Bannister
2007	Ellen Woodard, AIA
2006	Adelle Yee, FAIA Carol Ruzick Santos, FAIA Cari Burges
2005	Berjamin Jones, FAIA
2004	Ami Bera, FAIA Nelson Pressley, FAIA Marina Schwartz, FAIA
2003	Victoria Striano Andrea Leers, FAIA
2002	Loyd Heck, Honorary Awardee Sarah Harmons, FAIA
2001	Barbara Boylan, AIA Jean Goody, FAIA Sharon Matthews, AIA
2000	Rebecca Barnes, FAIA Judith Nitch, PE Jane Weitzspittel, FAIA Carol R. Johnson, FAIA Elizabeth S. Padgen, FAIA Chris Whitmer, AIA



↑ Yanel presented awards to 2018 recipients.