

This cover section is produced by the AIA Archives to show information from the online submission form. It is not part of the pdf submission upload.

2020 AIA Fellowship

Candidate Jason E. Smith
Organization KieranTimberlake
Location Philadelphia, Pennsylvania
Chapter AIA Pennsylvania; AIA Philadelphia

Category of Nomination

Object 1 > Design

Summary Statement

Jason E. Smith integrates art, research, and new modes of project delivery to expand the breadth and scope of architectural practice, yielding sophisticated work that is both rich in meaning and beautiful in craft.

Education

1994, Bachelor of Architecture, with distinction, The Pennsylvania State University

1993, Bachelor of Science, Architecture, with distinction, The Pennsylvania State University

Licensed in: 2000, Pennsylvania

2017, New York

2018, Ontario

Employment

1999 - present, KieranTimberlake

1995-1999, Kieran, Timberlake & Harris

1994-1995, SCO Studio

OFFICE OF THE DEAN

1040 North Olive Rd.
PO Box 210075
Tucson, AZ 85721-0075



THE UNIVERSITY OF ARIZONA

College of Architecture, Planning
& Landscape Architecture

capla.arizona.edu

September 21, 2019

Paul Mankins, FAIA, Chair
Jury of Fellows
American Institute of Architects
1735 New York Ave. NW
Washington, DC 20006

Re: Nomination of Jason Smith, AIA for Elevation to the College of Fellows

Dear Mr. Mankins and Selection Committee:

I sometimes worry about the future of this architecture profession of ours, about narrowing influence and resistance to change. Yet, every time I have the opportunity to work, speak, or exchange ideas with Jason Smith, I am deeply reassured. Jason is an architect with vision, not just about integrated design, but also about the future of our profession. He is a design leader who has found increasingly effective ways to add value within the design process, expanding the role of the architect, and expanding the influence of the architect.

I met Jason Smith during my time as Associate Vice President for Facilities Engineering and Planning at Rice University, where I was fortunate enough to have Jason lead the Brockman Hall for Physics project for KieranTimberlake. Yes, this project earned national design accolades, but it was Jason's commitment to collaboration, decision-ready information, and research-informed design that made this process and building extraordinary. Following this experience, Rice hired KieranTimberlake and Jason again to create an entirely new data-informed approach to integrated master planning. The dynamic decision model, the Integrated Campus Plan, developed from an inclusive design/planning process, is simply groundbreaking, allowing Rice to create complex scenarios based on Rice's own "planning DNA" for decision-making.

I have never worked with any individual so dedicated, so innovative, so collaborative, and so thoughtful about how our profession can add value. These qualities are also infused with design knowledge and leadership skills that are beyond compare, producing projects that positively impact cities, campuses, and lives. In addition, Jason has taken the time to share this knowledge generously in both educational and professional environments.

Jason might be recommended for elevation to the College of Fellows based on any one of the areas of design leadership, design research, impact on design education, or integrated design. It is, however, the broadening of the scope of design and the architecture profession that I believe is most notable. This work will lead us all to the future. Therefore, it is with great pleasure, as sponsor, that I enthusiastically encourage you to consider the candidacy of Jason Smith, AIA.

Sincerely,

Barbara White Bryson, Ed.D. FAIA
Associate Dean Research and Director of The Drachman Institute
College of Architecture Planning and Landscape Architecture

1 Summary of Achievements



1.0 Summary of Achievements

Jason E. Smith integrates art, research, and new modes of project delivery to expand the breadth and scope of architectural practice, yielding sophisticated work that is both rich in meaning and beautiful in craft.

Design Leadership In more than two decades leading architectural projects throughout North America, Jason Smith has evolved a wide-ranging and inclusive design process, resulting in a body of work that is collegial, artful, and spontaneous, while also esteemed for longevity and environmental responsiveness. His approach thoroughly integrates people, place, and performance in all endeavors, from the initial investigations of conceptual design through project delivery and construction. Jason's design work exemplifies the elegant balance of poetry and performance that is the hallmark of our profession.

As a Partner at KieranTimberlake, Jason has led the design and construction of the firm's pivotal, award-winning projects. He works at all scales, from college campuses to private homes to community projects in pursuit of connecting the built environment across generations. His guidance of Brockman Hall for Physics at Rice University and Atwater Commons at Middlebury College evinces a delicate understanding of the re-interpretation of forms, materials, and relationships as a lasting contributor to the memory of a place. Consistent in his approach is a commitment to detail and execution that ensures the structures' graceful aging and enduring quality for successive communities across time.

Jason's projects are published in *Architect*, *Architectural Record*, *Faith and Form*, and other media outlets, and have won AIA Institute Honor Awards for Architecture, as well as honors at the highest levels from the Chicago Athenaeum, Autodesk, and American Institute of Architects chapters throughout the United States.

Advocate for Collaboration Jason's promotion of design quality extends beyond conventional approaches and is aimed at restoring trust and collective accountability to architecture and its allied professions. Transecting the broadest spectrum of project constituents, Jason initiates and cultivates vital relationships that invest aspirational design values both laterally within project teams, and externally to the communities they serve. His leadership harnesses novel, deeply collaborative project delivery paradigms to successfully enhance design outcomes. This approach has empowered and enlightened university clients like Brown University, where Jason spearheaded the design of one of the first university projects in the United States to use a true Integrated Project Delivery platform. At the University of California, Santa Barbara, Jason collaborated with three partner firms to develop a shared vision for a 1,000-person academic village, while overseeing the design of a LEED-platinum

dining commons. Jason has shared his expertise on integrated project delivery and collaborative team building with peers at the AIA Conference on Architecture, Society for College and University Planning conferences, and other national events.

Innovation and Professional Development Jason has long fostered a comprehensive design culture and advanced an exemplary research mission at KieranTimberlake, which today invests in research staff and infrastructure devoted to improving the built environment. His leadership of the Integrated Campus Plan at Rice University prompted development of the Campus Planning Query software, a dynamic modeling platform that offers a range of mutable and extensible planning outcomes. Jason's commitment to the broadest spectrum of professional development includes creating and teaching an academic curriculum aimed at an urgent need of our industry—uniting design leadership with practice management. He is a frequent lecturer and serves on academic and professional design juries nationwide, including as jury chair for AIA New England, AIA DC, and AIA Kansas. His participation in the Centennial Kossman thesis jury at his alma mater, Penn State University, led to the creation of an endowed scholarship fund for aspiring architects.

2 Accomplishments





Jason E. Smith

Education

- 1994 Bachelor of Architecture, with distinction, The Pennsylvania State University
- 1993 Bachelor of Science, Architecture, with distinction, The Pennsylvania State University

Professional Experience

- 1999-present KieranTimberlake, Philadelphia, Pennsylvania
- 1995-1999 Kieran, Timberlake & Harris, Philadelphia, Pennsylvania
- 1994-1995 SCO Studio, Los Angeles, California

Architectural Registrations

- 2018 Ontario
- 2017 New York
- 2000 Pennsylvania

Academic Honors

- 1994 The AIA Henry Adams Medal, (top-ranked student)
- 1994 The Paul M. Kossman Thesis Design Award, Runner-Up

Academic Affiliations

- 2006-2015 Adjunct Professor, Philadelphia University, College of Architecture and the Built Environment


Professional Affiliations

- 2018 Ontario Association of Architects
- 2017 National Council of Architectural Registration Boards
- 2006 LEED Accredited Professional
- 2000 American Institute of Architects


2.1 Accomplishments Project Experience and Speaking Engagements


Significant Projects by Type

UNIVERSITY STUDENT LIFE

 Atwater Commons, Middlebury College, Middlebury, Vermont

Bennett Family Center, The Pennsylvania State University, State College, Pennsylvania

 Keeling Apartments, University of California San Diego, San Diego, California

 San Joaquin Precinct Study and Portola Dining Commons, University of California, Santa Barbara, Santa Barbara, California

Student Academic Services Building, Ohio State University, Columbus, Ohio

The Tidelands, University of California, San Francisco, San Francisco, California

ART AND CULTURE

Pavilion in the Woods, French Woods Festival of the Performing Arts Hancock, New York

CORPORATE

1901 Arch Street, Liberty Property Trust, Philadelphia, Pennsylvania

FIRM-LED RESEARCH

Campus Planning Query Tool

Offsite Fabricated Branch Bank Feasibility Study, Confidential Client, Minneapolis, Minnesota

Single and Multi-Family Housing Prototype, LivingHomes


Urban Loft Initiative


HISTORIC RENOVATION AND RETROFIT


Car Shops Restoration, Phase 1 & 2, The B&O Railroad Museum, Baltimore, Maryland

Lovett Hall Renewal, Rice University, Houston, Texas

Le Chateau and Coffrin Halls Middlebury College, Middlebury, Vermont


 McKinlock Hall, Harvard University Cambridge, Massachusetts

 Multifaith Center and Houghton Memorial Chapel, Wellesley College Wellesley, Massachusetts

 Silliman College, Yale University, New Haven, Connecticut

K-12 SCHOOLS

Lower School Science Laboratories, Wilmington Friends School Wilmington, Delaware


 Quaker Meeting House and Arts Center, Sidwell Friends School, Washington, District of Columbia


MASTER PLANNING

Integrated Campus Plan, Rice University, Houston, Texas

Thayer Dining Hall Replacement Dartmouth College Hanover, New Hampshire

PRIVATE HOMES


 Belles Townhomes, LivingHomes, San Francisco, California


 Pound Ridge House, Pound Ridge, New York


RESEARCH AND INNOVATION


New Science Building, University of Toronto Mississauga, Mississauga, Ontario

Center for Innovation, Making, and Learning, The Pennsylvania State University, State College, Pennsylvania

 Cambridge Office Building and Parking Garage, Rice University, Houston, Texas

 Brockman Hall For Physics, Rice University, Houston, Texas

 Henley Hall, Institute for Energy Efficiency, University of California Santa Barbara, Santa Barbara, California

 Engineering Research Center, Brown University, Providence, Rhode Island

Significant Engagements by Type

LECTURES

University of Kansas, Lawrence, Kansas
AIA DC, Christopher Kelley Leadership Development Summit, Washington, District of Columbia

The Pennsylvania State University, NCMA Student Competition, State College, Pennsylvania

KEYNOTE ADDRESSES

AIA Kansas Annual Conference, Wichita, Kansas
AIA Indianapolis, Indianapolis, Indiana
AIA Asheville and Living Building Asheville Collaborative, Asheville, North Carolina

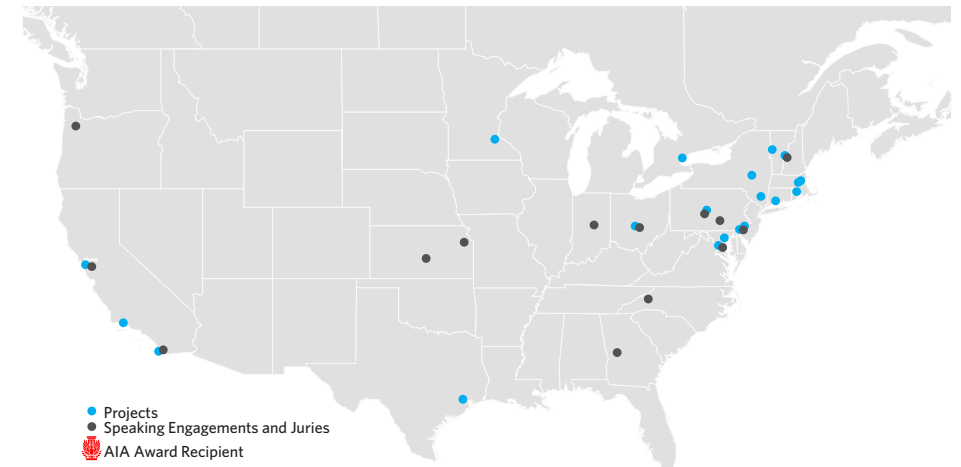
AIA Committee on the Environment, Columbus, Ohio

PANEL DISCUSSIONS AND CONTINUING EDUCATION SESSIONS

American Council for Construction Education, Philadelphia, Pennsylvania
Society of College and University Planning, SCUP-52, Washington, District of Columbia
Design Colloquium, San Francisco, California
AIA Convention 2015, Atlanta, Georgia
International Institute for Sustainable Laboratories, San Diego, California
Society of Design, Harrisburg, Pennsylvania
Dartmouth Sustainable Design Symposium, Hanover, New Hampshire

DESIGN AWARD JURIES

AIA Kansas Design Awards, Wichita, Kansas
AIA Portland Design Awards, Portland, Oregon
AIA DC Design Awards, Washington, District of Columbia
Distinguished Visiting Fellow, University of California, Berkeley
The Pennsylvania State University, College of Arts and Architecture, State College, Pennsylvania



2.1 Accomplishments Project Experience



New Science Building

University of Toronto Mississauga
Mississauga, Ontario
2022 (in construction)

This new research facility seeks to transform the sciences at the University of Toronto Mississauga. In addition to hosting laboratories in all disciplines, the building will be the home to the Center for Medicinal Chemistry, a University area of excellence. Among a redeveloping campus district, the building is carefully integrated with the surrounding landscape through an accessible vegetated roof, internal courtyards, and views to the campus and Credit River Valley beyond.

Size
167,400 GSF

Role of Nominee
Design Partner



Center for Innovation, Making, and Learning

The Pennsylvania State University
State College, Pennsylvania
2021 (in construction)

Penn State's first true interdisciplinary building will contain makerspaces, collaboration and co-working areas, and instructional spaces designed to accelerate innovation through peer learning, knowledge sharing and mentorship. It will support a University-sponsored state-of-the-art Entrepreneurial and Innovation Hub and through its programming and urban presence create a new destination to bring together campus and community.

Size
81,840 GSF

Role of Nominee
Design Partner



Henley Hall, Institute for Energy Efficiency

University of California, Santa Barbara
Santa Barbara, California
2020 (in construction)

This research and teaching headquarters for the College of Engineering's IEE will support leading-edge investigations into the future of energy-efficient technologies. A finely tuned terracotta and glass envelope minimizes solar heat gain while admitting copious daylight and allows 100% passive cooling where research conditions permit. Together with carefully integrated systems, this approach has the project on track to be the most efficient laboratory on campus.

Size
53,000 GSF

Role of Nominee
Design Partner



The Tidelands

University of California, San Francisco
San Francisco, California
2019

The Tidelands is a sustainable and affordable mixed-use urban housing complex that provides much-needed accommodations for over 700 medical students and residents. A mix of micro-unit, studio, and two-bedroom apartments are carefully configured within a limited zoning envelope, allowing rental contract rates 40% below market. The units are distributed across two courtyard buildings, establishing a respectful urban presence in this rapidly changing neighborhood.

Size
390,000 GSF

Role of Nominee
Design Partner

2.1 Accomplishments Project Experience



The Yard

Northern Liberties Neighborhood Association
Philadelphia, Pennsylvania
2018

As part of a Community-centered public space initiative, the Yard provides a verdant and innovative space for day camps, fundraisers, and community events in one of Philadelphia's fastest-growing districts. In seeking to redefine what a neighborhood park can be, the community engagement process of this pro-bono project asked broad questions about the nature of the urban realm and how to create true accessibility for all strata of society.

Size

Approximately 455 SF

Role of Nominee

Design Partner



Cambridge Office Building and Parking Structure

Rice University
Houston, Texas
2017

Set within a mature campus district, this project is a carefully orchestrated dialog between building and landscape. A glass facade with integrated structure and terra cotta shading fins provides managed daylight while promoting views of the campus from within the tree canopy. A tensile scrim envelope patterned with fig vine camouflages the bulk of the parking structure, while allowing for natural ventilation and mitigating glare.

Size

Building: 224,500 GSF
Parking: 490 spaces

Role of Nominee

Design Partner

Select Awards:

2019 Texas Society of Architects, Design Award



Engineering Research Center

Brown University
Providence, Rhode Island
2017

As both an extension of the campus and a destination in the City, the ERC unifies disparate buildings and disciplines while managing a host of physical and programmatic constraints. As the first wholly new Engineering facility in 50 years, its design supports cutting-edge scientific inquiry while being adaptable to ever-changing modes of research. At its heart is the Commons, an originally unprogrammed space that has become the hub of Engineering on campus.

Size

81,500 GSF

Role of Nominee

Design Partner

Select Awards

2018 Autodesk AEC Excellence Awards



Integrated Campus Plan

Rice University
Houston, Texas
2017

This dynamic, long-term campus planning framework will support the physical development of Rice for the next 30 to 50 years. A key component of the initiative is a custom dashboard where campus managers can access configurable databases of a wide range of development impacts, all contained within a 3D digital environment. This allows for the modeling of a variety of possible outcomes, rather than the typical singular, "set-piece" approach.

Size

295 Acres

Role of Nominee

Design Partner

2.1 Accomplishments Project Experience



Lovett Hall Renewal
Rice University
Houston, Texas
2017

Designed by Boston architects Cram, Goodhue and Ferguson, Lovett Hall was the first building constructed at Rice in 1912, and today remains an emotional touchstone for the entire Rice community. This project assesses the potential of renewing the physical infrastructure and inserting contemporary program elements while honoring the vision of the original design and extending its legacy into Rice's second century.

Size
51,428 GSF

Role of Nominee
Design Partner



San Joaquin Precinct Study
University of California, Santa Barbara
Santa Barbara, California
2013–2017

This vibrant village combines mixed housing types and amenities for more than 1,000 students, with staff and faculty residences and a central dining commons. The collaborative Master Plan was a joint effort of four design firms. Individual projects were designed and built by each firm, resulting in a new mini-campus that is as spatially, aesthetically, and programmatically rich as one that has evolved over time.

Size
14.6 acres

Role of Nominee
Design Partner

Select Awards
2019 Housing Award
American Institute of Architects
2018 AIA San Francisco, Merit Award



Portola Dining Commons
University of California, Santa Barbara
Santa Barbara, California
2017

Portola Dining Commons is a welcoming, sustainable front door to the off-campus San Joaquin villages. A transparent facade beckons students and visitors while engaging the surrounding pedestrian and bicycle networks. Rather than compete with Santa Barbara's dramatic scenery, the Commons is a "big, beautiful room" defined by the Santa Ynez Mountains and the coastal landscape.

Size
36,400 GSF

Role of Nominee
Design Partner

Select Awards
2019 Housing Award
American Institute of Architects
2018 AIA San Francisco, Merit Award



Pound Ridge House
Private Residence
Pound Ridge, New York
2014

This home sits within a boulder-strewn escarpment that rises over a hundred feet from a wetland to the top of a ridge. It is designed to capture the presence of the forest indoors, so residents can commune quietly with nature. Time of day, season of year, and variations in weather all shift and display on the reflective stainless steel and glazed facades.

Size
5,250 GSF

Role of Nominee
Principal

Select Awards
AIA New York State Award of Excellence, 2016
Architizer A+ Awards, Special Mention, 2015
World Architecture Festival, Shortlisted, 2015
AIA Philadelphia, Honor Award, 2014
AIA Pennsylvania, Honor Award, 2014

2.1 Accomplishments Project Experience



McKinlock Hall

Harvard University
Cambridge, Massachusetts
2014

This renovation is part of the River House Renewal program, a comprehensive initiative to update Harvard's classic River Houses and bring new relevance to an aging but noble building type. The project includes complete interior and exterior renovation and program modernization of Leverett McKinlock, a 98,000 gross square foot brick and slate, Neo-Georgian student residence.

Size
98,000 GSF

Role of Nominee
Principal

Select Awards:
AIA Philadelphia, Merit Award, 2017
AIA Pennsylvania, Bronze Award, 2017



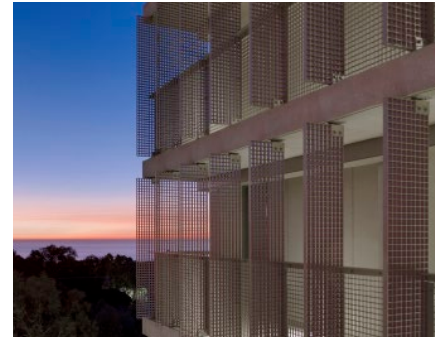
1901 Arch Street

Liberty Property Trust
Philadelphia, Pennsylvania
2012

Located in Center City Philadelphia, this 22-story, 480,000-square-foot commercial core and shell project establishes a vibrant new presence in an interstitial urban context. The concept design embraces Philadelphia's updated Sky Plane ordinance to take full advantage of a narrow site and creates a transparent and inviting urban corner.

Size
480,000 GSF

Role of Nominee
Principal



Keeling Apartments

University of California, San Diego
San Diego, California
2011

This LEED-Platinum residential complex uses a suite of integrated conservation strategies to capitalize on Southern California's benign climate. The housing community and associated landscape renew an underdeveloped campus district, fostering community and reflecting the University's values in a model that will adapt gracefully and serve future development.

Size
147,000 GSF

Role of Nominee:
Principal

Select Awards
AIA Philadelphia, Merit Award, 2013
AIA COTE, Top Ten Green Project, 2013
AIA California Council, Merit Award, 2012
American Society of Landscape Architects, Presidents Medal, 2012
Chicago Athenaeum, International Architecture Award, 2012



Brockman Hall For Physics

Rice University
Houston, Texas
2011

This LEED-Gold certified laboratory is the product of careful analysis of context, form, iconography, and purpose in Rice's architecture. It internalizes the campus material palette, extending the legacy of craft and translating historic themes into contemporary detailing. The result is a refined 21st century expression of Rice's architecture and pedagogy.

Size
110,000 GSF

Role of Nominee
Principal

Select Awards
AIA Institute Honor Award for Architecture, 2015
SCUP Excellence in Architecture Award, 2012
AIA Houston, Design Award, 2012
AIA Pennsylvania Honor Award, 2012
Texas Society of Architects, Design Award, 2011

2.1 Accomplishments Project Experience



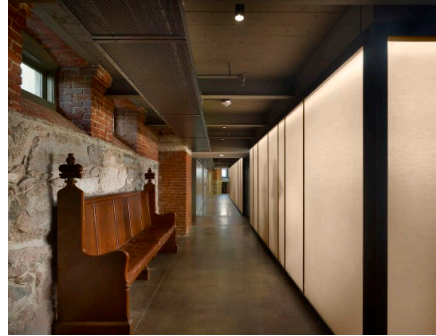
Quaker Meeting House and Art Center
Sidwell Friends School
Washington, District of Columbia
2011

By combining a repurposed building core and shell with carefully conceived and crafted insertions, this AIA Institute Honor Award winner organizes the entire campus anew. The building forms connections and gathering places where none existed and creates a new space for contemplation and worship at the heart of Sidwell Friends School.

Size
28,000 GSF total; 4,900 GSF addition

Role of Nominee
Principal

Select Awards
AIA Institute Honor Award, 2014
AIA Pennsylvania, Merit Award, 2013
AIA Philadelphia, Divine Detail, 2011
AIA Philadelphia, Silver Medal, 2011



Multifaith Center and Houghton Memorial Chapel
Wellesley College
Wellesley, Massachusetts
2008

This comprehensive renewal of the venerable Houghton Chapel includes a new Multifaith Center in the lower level. The programmatic pairing seeks and sustains its meaning through a spiritual dialogue between old and new, singular and plural. It recognizes multifaith worship as an enriching layer placed upon an individual's faith within the wider College community.

Size
20,000 GSF

Role of Nominee
Principal

Select Awards:
AIA Pennsylvania, Citation of Merit, 2009
Boston Society of Architects, Higher Education Design Awards, Award for Design Excellence, 2009



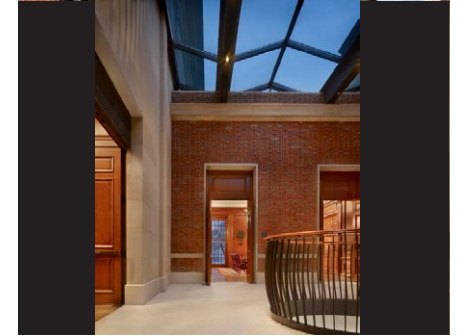
Belles Townhomes LivingHomes
San Francisco, California
2008

Belles Townhomes is the first multifamily project to emerge from a line of sustainable, off-site fabricated typologies designed by Kieran Timberlake for LivingHomes. Set within the Presidio historic district, the townhomes are designed to both minimize impact to the site and coordinate with and extend the legacy of planning and building at this well-known park.

Size
11,770 GSF

Role of Nominee
Principal

Select Awards:
AIA California Council, Honor Award, 2011



Siliman College
Yale University
New Haven, Connecticut
2007

Silliman College is the largest and last of Yale University's ten original residential colleges. The College's comprehensive renovation and systems upgrade includes the insertion of new programs and forms that both honor Yale's architectural past and provide a cohesive identity to the aesthetically disparate Silliman structures.

Size
248,000 GSF

Role of Nominee
Associate in Charge

Select Awards:
Boston Society of Architects, Award for Design Excellence, Higher Education Design Awards, 2009
AIA Philadelphia, Merit Award, 2009
World Architecture Festival Awards, Shortlist, 2009

2.1 Accomplishments Project Experience



Student Academic Services Building and Lane Avenue Parking Structure

Ohio State University
Columbus, Ohio
2006

In collaboration with Acock Associates Architects, this project, located on a former surface parking lot at a major intersection of University and City, is designed as a gateway to the Columbus campus. The building houses core student service and administrative functions and through its massing and materiality carefully conceals the bulk of the parking structure.

Size

Building: 71,000 GSF,
Parking: 1,500 spaces

Role of Nominee

Associate in Charge



Atwater Commons

Middlebury College
Middlebury, Vermont
2004

Composed of twin stone residence halls and a separate glass dining pavilion with green roof, Atwater Commons embraces a fully sustainable approach. It integrates a material palette both reverent and novel, and the residence halls feature an innovative natural ventilation system that is tuned to the local climate and reflects Middlebury's environmental ethos.

Size

Residence Halls: 91,400 GSF
Dining Hall: 23,600 GSF

Role of Nominee

Associate in Charge

Select Awards:

AIA New England, Honor Award, 2010
Building Stone Institute, Tucker Design Award, 2008
Boston Society of Architects, Citation, Sustainable Design Awards, 2007
AIA Philadelphia, Merit Award, 2007
AIA Pennsylvania, Silver Medal, 2006



Single and Multi-Family Prototypes LivingHomes

Newport Beach, California
2009

Designed to extend the model of modern, sustainable, off-site fabricated housing into widely applicable size and site typologies—namely the detached home for urban, suburban, and rural sites—the LivingHome offers builders and developers a product that is both cost-efficient and profitable to build in scale, demonstrating that there is an alternative to conventional delivery.

Size

2,400 GSF

Role of Nominee

Principal

Select Awards:

Green Dot Award, First Place in Design, Second Place in Build Category, 2009



Urban Loft Initiative

Kieran Timberlake
Research Project
2006

This ongoing research project is focused on developing low cost, high quality, rapidly deployable high-rise residential buildings on urban sites. The proposed system, aimed at minimizing construction time and diminishing the environmental impact of on-site activity, consists of prefabricated functional components that plug into a generic structural frame.

Size

Varies

Role of Nominee

Associate in Charge

2.1 Accomplishments Mentorship, Teaching, and Community Involvement



Academic Involvement

Philadelphia University, College of Architecture and the Built Environment
Arch 503: Professional Management
Philadelphia, Pennsylvania
2006-2015

After a decade of practice, Jason was all too familiar with the conflicts inherent in translating the idealized world of academics into the realities of the design and construction industry. Often these difficulties begat the simplistic but common mentality of seeing practice as purely pragmatics and art and beauty as desirable but often unrealizable. Experienced practitioners considered architecture school as inadequate preparation for the “real world”; academic curriculums divorced themselves from any external factors of commerce.

Building on his experience in a practice that elegantly balances the artistic, technical, and business foundations of the profession, Jason rejected this schism and instead created an opportunity to fully unite design leadership and practice management. In a decade of teaching in the accredited Bachelor of Architecture program at Philadelphia University, he curated and taught a Professional Management curriculum that focused on building design opportunities into everyday practice models. The outcome was an integrated educational experience—studio and practice now speaking to one another—which prepared students to seek and develop design opportunities in many different practice settings.



Community Involvement and Pro-Bono Work

KieranTimberlake Community Involvement Group

Philadelphia, Pennsylvania
2013-Present

Jason has spearheaded pro-bono community involvement as a lead Partner formalizing the KieranTimberlake Community Involvement (KTCI) group. As part of KieranTimberlake’s commitment to dedicate 1% of its time to community service and engagement, the KieranTimberlake Community Involvement (KTCI) group collaborates with nonprofit organizations on pro-bono projects of various scales.

KTCI creates a framework for staff members who wish to participate in non-profit initiatives both within and outside of the field of architecture, and to integrate a spirit of volunteerism at KieranTimberlake. Since 2013, KieranTimberlake staff has donated over 6,500 hours to several organizations and initiatives.

Each KTCI project requires an integrative approach, leading to productive collaborations with many neighborhood and community stakeholders to achieve a project goal within a short timeframe. Each project team is volunteer based, and provides management, programming, planning and design services, fundraising, conceptual design, visioning, or a built project.

2.1 Accomplishments Mentorship, Teaching, and Community Involvement



Spark Mentorship Program
2014–Present

Kieran Timberlake is a partner of Spark, a mentoring program that pairs local professionals with middle school students for self-exploration and career development.

The Yard, Northern Liberties Neighborhood Association
2016–2018

KTCI designed a new Pavilion to better serve the Community Center in Philadelphia's fastest-growing neighborhood.



CANopy
2016–2017

KTCI developed an installation that was paired with an interactive, online application that educates users on the cost and nutritional value of shelf stable goods.

Community Design Collaborative, Reactivating Public Schools
2014–2015

Kieran Timberlake volunteers assembled temporary and permanent design concepts for a vacant school building taking into account both the needs of the community and the desire for neighborhood revitalization.



CoLab Philadelphia
2018–Present

This initiative from Jefferson University's Health Design Lab brings wellness outside of traditional medical walls and into the neighborhoods that need it most. For CoLab's pilot project, KTCI worked in partnership with Jefferson University Hospital, Impact Services, New Kensington Community Development Corporation, and Cohere to convert an Airstream trailer into a mobile, multi-use platform that activates public spaces and creates unique programming. By engaging key stakeholders and the broader community, the project team developed a design that unified many voices and opportunities and brought programs such as a farmer's market, health screenings, workshops, and awareness campaigns into Philadelphians' front yards.



2.1 Accomplishments Lectures, Panels, and Award Juries



Professional Engagements

Keynote Addresses

- 9.2019 **Collective Inquiry**, AIA Kansas Annual Conference, Wichita, Kansas
- 11.2018 **Collective Inquiry**, AIA Indianapolis, Indianapolis, Indiana
- 11.2017 **Climate Adaptive Design**, AIA Asheville and Living Building Asheville Collaborative, Asheville, North Carolina
- 4.2016 **Place, Time, and Purpose**, AIA Committee on the Environment Annual Meeting, Columbus, Ohio

Lectures

- 9.2019 **Research in Practice**, University of Kansas, Lawrence, Kansas
- 7.2019 **Improving Project Outcomes**, American Council for Construction Education, Philadelphia, Pennsylvania
- 4.2018 **Research Informing Practice**, AIA DC Christopher Kelley Leadership Development Summit, Washington, District of Columbia
- 4.2017 **In Aggregate: Design and Masonry**, The Pennsylvania State University NCMA Student Competition, State College, Pennsylvania
- 2.2014 **Looking Forward/Looking Back**, Society of Design, Harrisburg, Pennsylvania
- 4.2010 **Simple Strategies**, Dartmouth Sustainable Design Symposium, Hanover, New Hampshire

Panel Discussions and Continuing Education Sessions

- 7.2017 **Partner Up for Success: The Collaborative Spectrum of Facilities Projects**, SCUP-52, Washington, District of Columbia
- 4.2017 **Integrated Project Delivery**, Design Colloquium, San Francisco, California
- 5.2015 **Life Cycle Assessment at the Speed of Design**, AIA Convention, Atlanta, Georgia
- 9.2015 **Establishing a Target EUI for a High-Performance Laboratory**, International Institute for Sustainable Laboratories, San Diego, California

Award Juries

- 7.2019 Jury Chair, AIA Kansas Design Awards, Wichita, Kansas
- 11.2018 Juror, AIA Portland Design Awards, Portland, Oregon
- 3.2018 Distinguished Visiting Fellow, University of California, Berkeley, Circus 2018, Berkeley, California
- 10.2015 Chair, AIA DC Design Awards, Washington, DC
- 5.2014 Juror, Kossman Design Thesis Review, The Pennsylvania State University, College of Arts and Architecture, State College, Pennsylvania
- 4.2010 Chair, AIA New England Design Awards

2.2 Accomplishments Awards, Honors, and Recognition

Firm Awards

- 2015 AIA Pennsylvania, Firm Award
- 2010 National Design Award, Smithsonian Cooper-Hewitt
- 2008 AIA Architecture Firm Award

Atwater Commons, Middlebury College

- 2010 AIA New England, Honor Award
- 2008 Building Stone Institute, Tucker Design Award
- 2008 Wood Design & Building Magazine, Wood Design Award, Honor Award
- 2007 Boston Society of Architects, Sustainable Design Award, Citation
- 2007 AIA Philadelphia, Merit Award
- 2006 AIA Pennsylvania, Silver Medal
- 2003 AIA Pennsylvania, Unbuilt, Honor Award

Belles Townhomes, LivingHomes

- 2011 AIA California Council, Honor Award

Brockman Hall for Physics, Rice University

- 2015 AIA Institute Honor Award for Architecture
- 2012 Associated Masonry Contractors of Houston Golden Trowel Award
- 2012 Chicago Athenaeum, International Architecture Award
- 2012 AIA Houston, Design Award
- 2012 AIA Pennsylvania, Honor Award
- 2012 Society for College and University Planning, Excellence in Architecture
- 2011 AIA Philadelphia, Honor Award
- 2011 Texas Society of Architects, Design Award

Charles David Keeling Apartments, University of California San Diego

- 2013 AIA Committee on the Environment, Top Ten Green Project
- 2013 AIA Philadelphia, Merit Award
- 2012 AIA California Council, Merit Award
- 2012 ASLA Presidents Medal
- 2012 ASCE Award of Merit for Sustainable Technology
- 2012 Chicago Athenaeum, International Architecture Award

Cambridge Office Building, Rice University

- 2019 Texas Society of Architects, Design Award

Engineering Research Center, Brown University

- 2019 Autodesk AEC Excellence Awards, Building Design

Single and Multi-Family Prototype, LivingHomes

- 2009 Green Dot Award, First Place in Design, Second Place in Build Category

Multifaith Center and Houghton Memorial Chapel, Wellesley College

- 2009 Boston Society of Architects, Award For Design Excellence, Higher Education Design Awards
- 2009 AIA Pennsylvania, Citation of Merit Award

Pound Ridge House

- 2017 Hanley Wood Builder's Choice & Custom Home Design Awards, Project of the Year
- 2016 AIA New York State, Award of Excellence
- 2015 Architizer A+ Awards, Special Mention
- 2015 World Architecture Festival, Shortlisted
- 2014 AIA Philadelphia, Honor Award
- 2014 AIA Pennsylvania, Honor Award

Quaker Meeting House and Arts Center, Sidwell Friends School

- 2014 AIA Institute Honor Award for Architecture
- 2013 AIA Pennsylvania, Merit Award
- 2012 Illuminating Engineering Society, Lumen Award for Integration of Daylighting and Electrical Lighting
- 2012 Wood Design & Building Magazine, North American Wood Design Awards, Merit Award
- 2011 AIA Philadelphia, Divine Detail, Daylighting
- 2011 AIA Philadelphia, Silver Medal

San Joaquin Villages, Portola Dining Commons, University of California, Santa Barbara

- 2019 AIA Housing Committee, Housing Award
- 2018 AIA San Francisco, Merit Award

2.3 Accomplishments Publications



Kieran Timberlake

Contributor: Kieran Timberlake: Fullness, published by Monacelli Press, 2019

Contributor: Kieran Timberlake: Inquiry, published by Rizzoli, 2011

Publications about nominee's projects, authored by others

Atwater Commons, Middlebury College

"Atwater Commons, Middlebury College, Vermont." Interior, Apr 2007.

"On Campus...New Academic Architecture." Hinge, Jul 2007.

1000x Architecture of the Americas. Berlin: Verlagshaus Braun, 2008.

Belles Townhomes, LivingHomes

"Belles Townhomes: SF's First LEED Platinum Multi-Family Housing," Inhabitat, 2010.

"Gorgeous LEED Platinum Townhouses Completed in San Francisco Park," Treehugger, 2010.

Brockman Hall for Physics, Rice University

"Brockman Hall," ICON, 2012.

"Brockman Hall for Physics," Texas Architect, 2011.

"Brockman Hall for Physics," Architect, 2011.

"Rice University Seeks LEED For Physics Hall," Earth Techling, 2011.

"Rice University in Texas unveils energy-efficient research facility," World Interior Design Network, 2011.

Engineering Research Center, Brown University

"What is New England architecture?" The Architects' Newspaper, William Morgan, 9.2018.

"Social Engineering: Brown University Engineering Research Center by Kieran Timberlake," Architectural Record, 2018.

"Brown University's Engineering Research Center increases the university's School of Engineering lab space by 30%," Building Design + Construction, 2018.

Keeling Apartments, University of California San Diego

"Hives for Minds," Architect Magazine, 2013.

"LEED Platinum First for UC Student Housing," Earth Techling, 2012.

"The architect behind UCSD's new uber-green housing," The San Diego Union-Tribune, 2011.



2.3 Accomplishments Publications



Publications about nominee's projects, authored by others

Single and Multi-Family Prototype, LivingHomes

- "Packing a Whole Lot More Into Less," The Washington Post, 2009.
- "KieranTimberlake Debuts Green Prefab Homes," Interior Design Online, 2009.
- "Living Homes: Bringing Green Building Closer to the Average American," Triple Pundit Blog, 2009.
- "Survival of the Fittest," Builder, 2009.
- "Sense and Sustainability in Long Beach; Monumentality in Flames in Beijing," DnA on KCRW, 2009.
- "KieranTimberlake LivingHomes in Long Beach," NBC Los Angeles, 2009.

McKinlock Hall, Harvard University

- "New life for McKinlock," Harvard Gazette, 2012.

Multifaith Center and Houghton Memorial Chapel, Wellesley College

- "Design from Dialogue." Faith & Form, vol. XLII, no. 3, 2009.

Pound Ridge House

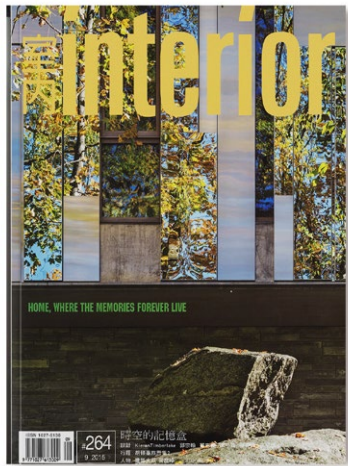
- "Muscular Modernism Thrives Amid the Hudson Valley's Beautiful Landscape," Introspective Magazine, 2018.
- "Amazing Architecture on the Rocks," Architectural Digest Online, 2016.
- "Pound Ridge House by KieranTimberlake reflects its surroundings with a mirrored façade," Dezeen Magazine, 2016.
- "Pound Ridge House by KieranTimberlake," Architectural Record, Houses Issue, 2015.
- "A shiny Westchester home, designed by KieranTimberlake, reflects its woodsy surroundings," Architects' Newspaper, 2015.
- "Pound Ridge House," Interior (Taiwan), 2015.

Quaker Meeting House and Arts Center, Sidwell Friends School

- "Silence and Reflection in a Serene Light: KieranTimberlake Designs a New Meeting House/Arts Center for Sidwell Friends School," Architecture DC, 2013.
- "Quaker Meeting House," Architectural Record, 2012.
- "Old Friends in New Places," Faith and Form, 2012.
- "Stewards of the Earth," Architectural Lighting, 2007.

The Yard, Northern Liberties Neighborhood Association

- "Why some Philadelphia neighborhoods are paying for their own park improvements," The Philadelphia Inquirer, 2019.



3 Exhibits



3.0 Exhibits List

- 1. Brockman Hall for Physics
Rice University**
Houston, Texas
2011
Photographers: Peter Aaron, Paul Hester
- 2. Meeting House and Arts Center
Sidwell Friends School**
Washington, District of Columbia
2011
Photographer: Michael Moran
- 3. San Joaquin Villages & Portola Dining Commons
University of California, Santa Barbara**
Santa Barbara, California
2017
Photographer: Bruce Damonte
- 4. Engineering Research Center
Brown University**
Providence, Rhode Island
2017
Photographers: Peter Aaron, Warren Jagger
- 5. Pound Ridge House
Private Residence**
Pound Ridge, New York
2014
Photographer: Peter Aaron
- 6. Multifaith Center and Houghton Memorial Chapel
Wellesley College**
Wellesley, Massachusetts
2008
Photographer: Barry Halkin
- 7. Atwater Commons
Middlebury College**
Middlebury, Vermont
2004
Photographer: Barry Halkin

3.0 Exhibits

Brockman Hall for Physics Rice University

Houston, Texas
2011

Situated on a narrow site on a campus of live oaks, historic arcades, and courtyards, this sophisticated research facility unifies faculty and students previously scattered across campus into a single collaborative environment. The program of laboratories, offices and lecture hall is given maximum flexibility with a massing split into two bars connected by glass bridges. Eight unique facades are tuned to provide natural light and views while protecting the labs from solar exposure and optimizing research conditions and privacy. The northern bar is raised above ground atop elegant, board-formed, tapered concrete piloti, creating a shady porch at the center of the Science Quadrangle, an open and welcoming shelter that extends the program out into the landscape.

The 2015 AIA Institute Honor Award for Architecture jury remarked that “the project is a total knock-out in every way—from the incredible planning to the spectacular detailing—yet it is extremely simple and very flexible.”

The project team surmounted the intensive energy demands of a science laboratory in Houston’s hot and humid climate to deliver a LEED Gold building on a hyper-track schedule of 33 months from programming to completion. Jason’s synthesis of the design aspirations of the project with the demands of performance and schedule led to a holistic outcome that honors the history and evolution of the campus while looking forward to the future of physics.

Design Firm

KieranTimberlake

Role of Nominee

Principal

AIA Awards

2015 AIA Institute Honor Award

2012 AIA Pennsylvania
Honor Award

2012 AIA Houston
Design Award

2011 AIA Philadelphia
Honor Award

Additional Awards and Certifications

2012 Associated Masonry
Contractors of Houston Golden
Trowel Award

2012 Chicago Athenaeum,
International Architecture Award

2012 Society for College and
University Planning, Excellence in
Architecture

2011 Texas Society of Architects
Design Award

LEED Gold

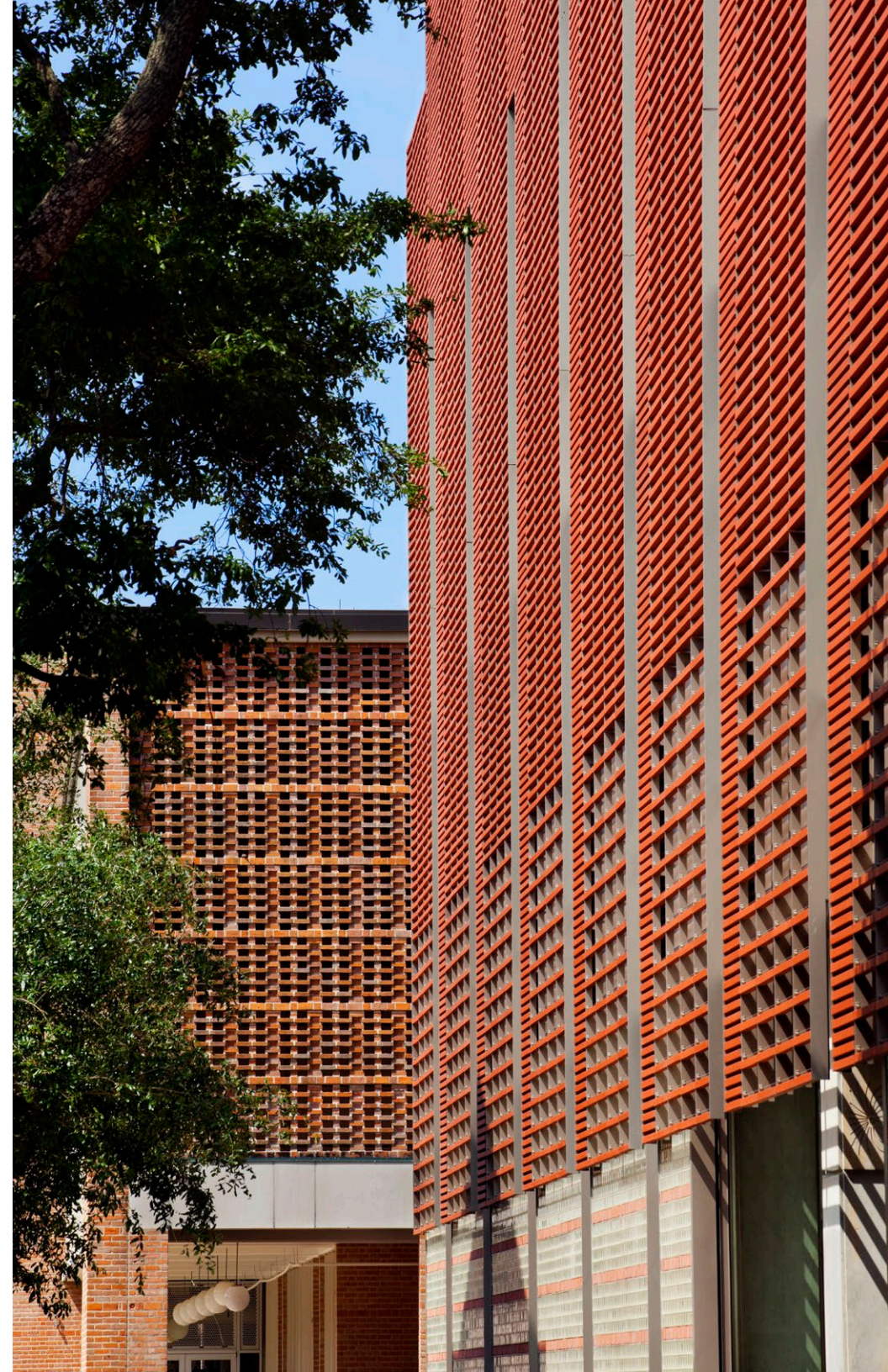
Publications

ICON Magazine, 2012

Texas Architect, 2011

Architect Magazine, 2011

World Interior Design
Network, 2011



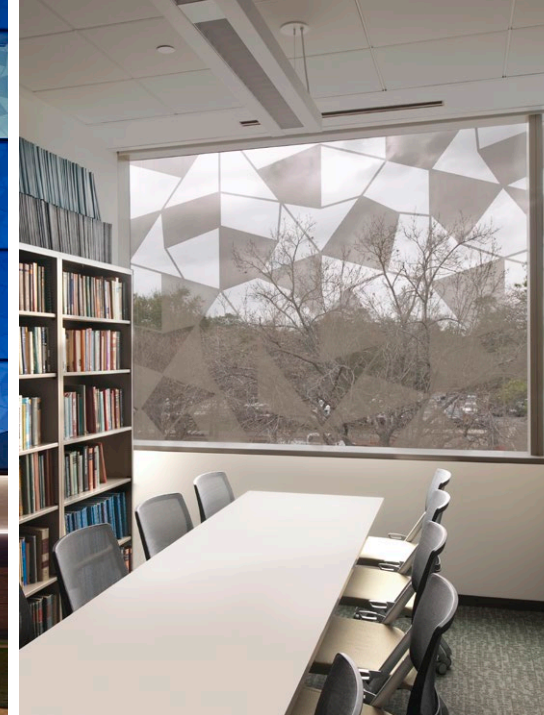
I have personal knowledge of the nominee's responsibility for this project, in which he was largely responsible for design.

*Patrick Dwyer, Executive Director for Space Management
Rice University*



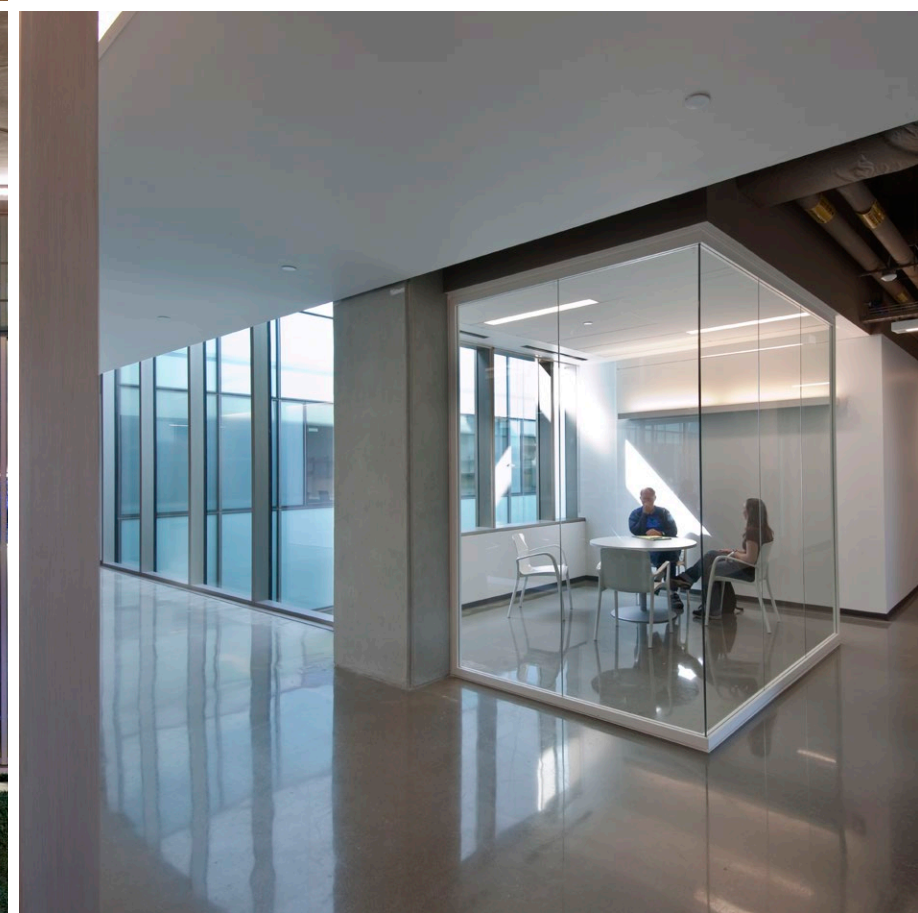
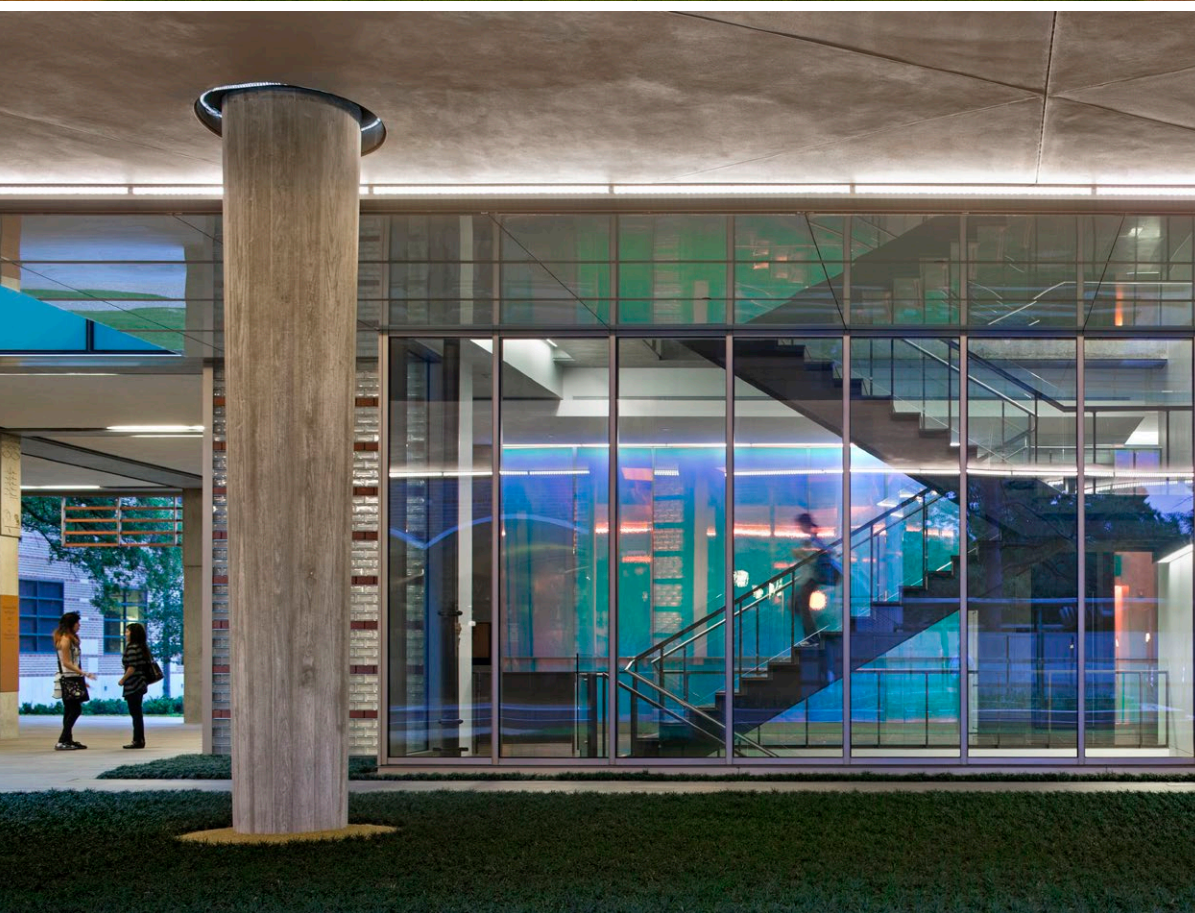
BROCKMAN HALL

UNIVERSITY OF MICHIGAN



“Brockman Hall for Physics is the most livable, useful physics building that I know of, and it’s just been a big game changer for us. Our experience has been fantastic. It’s a beautiful building.”

Dr. Randy Hulet,
Fayez Sarofim Professor,
Physics and Astronomy
Rice University





3.0 Exhibits

Quaker Meeting House and Arts Center Sidwell Friends School

Washington, District of Columbia
2011

With a minimum of means, this project transforms a non-descript 1950s gymnasium into a sustainable new space for contemplation and creativity serving the entire middle and upper school community at Sidwell Friends School. The building program includes a worship space, visual art and music rooms, and exhibition areas. The essence of Quaker Meeting, and thus the Meeting House itself, is silence and light. Architecturally this is achieved by filtering light and sound through architecture, landscape, structure, and systems arranged in successive concentric layers around a central source of illumination, both literal and spiritual.

The 2014 Institute Honor Award for Architecture jurors called it “a beautiful reinterpretation with a sensitive vernacular touch.” Early in his leadership of the project, Jason organized a series of listening sessions that coalesced the open, deliberative way Quakers reach consensus with the imperatives of an architectural process. The resulting mutual, balanced objectives formed the underpinning for the design direction of the project.

The LEED Platinum-rated building represents a maximum reuse of resources. While establishing a central arrival place for the entire school population; it also improves the campus by externalizing a mixed collection of buildings into a coherent whole.

I have personal knowledge of the nominee's responsibility for this project, in which he was largely responsible for design.

Michael Saxenian, Head of School, McLean School
Former Assistant Head of School and CFO, Sidwell Friends School

Design Firm

KieranTimberlake

Role of Nominee

Principal

AIA Awards

2014 Institute Honor Award for Architecture

2013 AIA Pennsylvania Merit Award

2011 AIA Philadelphia Silver Medal

2011 Philadelphia Chapter Divine Detail, Daylighting

Additional Awards and Certifications

2012 Illuminating Engineering Society, Lumen Award for Integration of Daylighting and Electrical Lighting

2012 Wood Design & Building Magazine, North American Wood Design Awards, Merit Award

LEED Platinum

Publications

Architecture DC, “Silence and Reflection in a Serene Light: KieranTimberlake Designs a New Meeting House/Arts Center for Sidwell Friends School,” 2013

Architectural Record, “Quaker Meeting House,” 2012

Faith and Form, “Old Friends in New Places,” 2012

Architectural Lighting, “Stewards of the Earth,” 2007









Portola Dining Commons, San Joaquin Villages University of California, Santa Barbara

Santa Barbara, CA
2017

When the University of California, Santa Barbara, purchased property approximately a mile from the core campus, they had a clear vision for a vibrant student life community. Desiring a multi-dimensional mini-campus for this land parcel, they selected four firms to create a joint master plan, districts of which were subsequently designed and built by each firm.

Jason collaborated directly with the three other firms to develop a shared vision, and under the umbrella of that vision worked to create a complementary design vocabulary also uniquely suited to the social opportunities of the program. The resulting complex is as architecturally, aesthetically, and programmatically rich as one that has evolved over time, earning a 2019 Housing Award from the AIA Housing Committee.

The LEED Platinum-certified Portola Dining Commons is the geographic and programmatic center of the San Joaquin Villages as well as its outward presence and front door. While students come to eat—the building can serve 800 people at one time indoors and out—they also come to gather and socialize in a place that feels like home. The building’s openness and flexibility satisfy students’ preference for variety and allows them to define their own social environment.

I have personal knowledge of the nominee’s responsibility for this project, in which he was largely responsible for design.

*Marc Fisher, Vice Chancellor, University of California Berkeley
Formerly Sr. Associate Vice Chancellor, University of California
Santa Barbara*

Design Firm

KieranTimberlake

Role of Nominee

Partner

AIA Awards

2019 American Institute of Architects
Housing Award

2018 San Francisco Chapter Merit Award

Additional Awards and Certifications

LEED Platinum

Publications

Residential Design Magazine, 2019

Architects’ Newspaper, 2019

Forbes Magazine, 2019



"This elegant building is extremely beautiful and an iconic addition to the UCSB campus."

Marc Fisher, Current Vice Chancellor of Administration, University of California, Berkeley, Former Sr. Associate Vice Chancellor, University of California, Santa Barbara

3.0 Exhibits

Engineering Research Center Brown University

Providence, RI
2017

When Brown University elevated its engineering department to the status of School of Engineering in 2010, it was still without a unified home on campus. The Engineering Research Center was originally planned as a standalone building with umbilical connections to existing engineering resources. After extensive conversations with Brown's leadership, faculty, researchers, and students, the design matured into a campus planning effort that creates a clear identity for the school and extends the campus in a transformative place of welcome.

As the design leader of Brown's first "from-scratch" multi-party Integrated Project Delivery (IPD) team, Jason worked closely with the University and Shawmut Design and Construction to reconceive a program that invigorates and connects the School. Through focused dialogue, observation, workshops, and surveys, he led the team to develop a thoughtful and bespoke approach to laboratories and collaborative spaces that emphasizes the interdisciplinary spirit of inquiry that sets engineering at Brown apart from its peers and in physical form realizes the School's strategic plan.

The result is a forward-looking, customizable, and durable building with accessible, loft-like engineering labs designed to adapt to shifting research types across academic disciplines. Flexible, open plan workspaces are visually and programmatically linked to each laboratory, enabling fluid workflows while connecting occupants with daylight and views to campus and town.

I have personal knowledge of the nominee's responsibility for this project, in which he was largely responsible for design.

*Michael Guglielmo, Vice President for Facilities Management
Brown University*

Design Firm

KieranTimberlake

Role of Nominee

Partner

Additional Awards and Certifications

2018 Autodesk AEC Excellence
Awards, Building Design Medium
Category

LEED Gold (Pending)

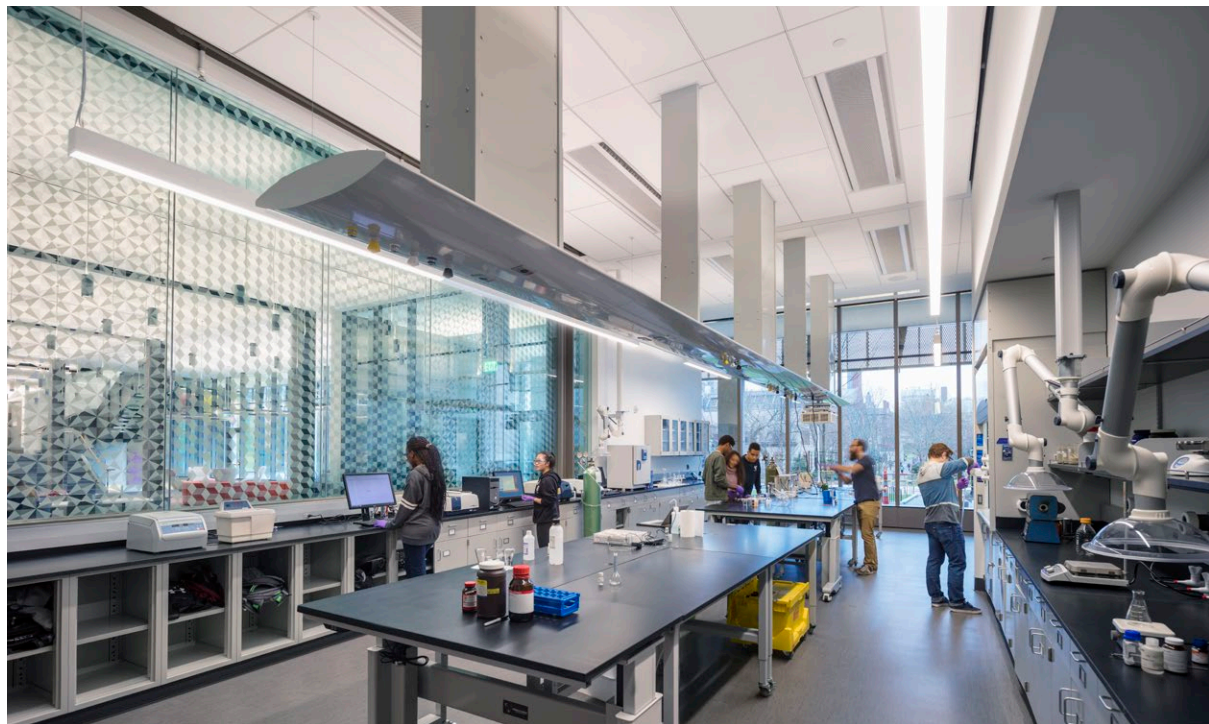
Publications

The Architects' Newspaper,
"Yankee Modern: What is New
England Architecture?" 2018

Architectural Record, "Brown
University Engineering Research
Center by KieranTimberlake,"
2018

Building Design + Construction,
"Brown University's Engineering
Research Center increases the
university's School of Engineering
lab space by 30%," 2018







3.0 Exhibits

Pound Ridge House Private Residence

Pound Ridge, NY
2014

The owners of this home were drawn to the magical sense of tranquility they felt upon their first visit to the boulder-strewn site. They wanted to live in a “house in the woods, of the woods,” where they could feel the presence of the forest indoors, and commune quietly with nature within daylight, open, airy, and warm rooms. Despite a rich history of glassy modernism in the surrounding communities, Jason recommended to the owners an alternative polemic: could the home offer the visual characteristics of glass while operating with extremely low energy demands? The result is a careful composition of specific, curated apertures embedded in a super-insulated envelope of shimmering reflection.

Accordingly, the house is comprised of two simple volumes scribed into the hillside and connected by a floating bridge. The bridge reconciles the change in level from the site’s plateaus and allows the water to flow naturally across the site. Outer walls clad in tin zinc-coated copper, brushed stainless steel, polished stainless steel, and glass, expand and magnify the forest, topography, geological formations, with intense seasonal colors, each day representing a fresh composition. The project received six design awards including 2017 Project of the Year from Hanley Wood.

Design Firm

KieranTimberlake

Role of Nominee

Principal

AIA Awards

2016 AIA New York State Award of Excellence

2014 AIA Pennsylvania Honor Award

2014 AIA Philadelphia Honor Award

Additional Awards and Certifications

2015 Architizer A+ Awards Special Mention

2015 World Architecture Festival, Shortlisted

2017 Hanley Wood Builder’s Choice & Custom Home Design Award Project of the Year

Publications

Introspective Magazine, “Muscular Modernism Thrives Amid the Hudson Valley’s Beautiful Landscape,” 2018

Architectural Digest Online, “Amazing Architecture on the Rocks,” 2016

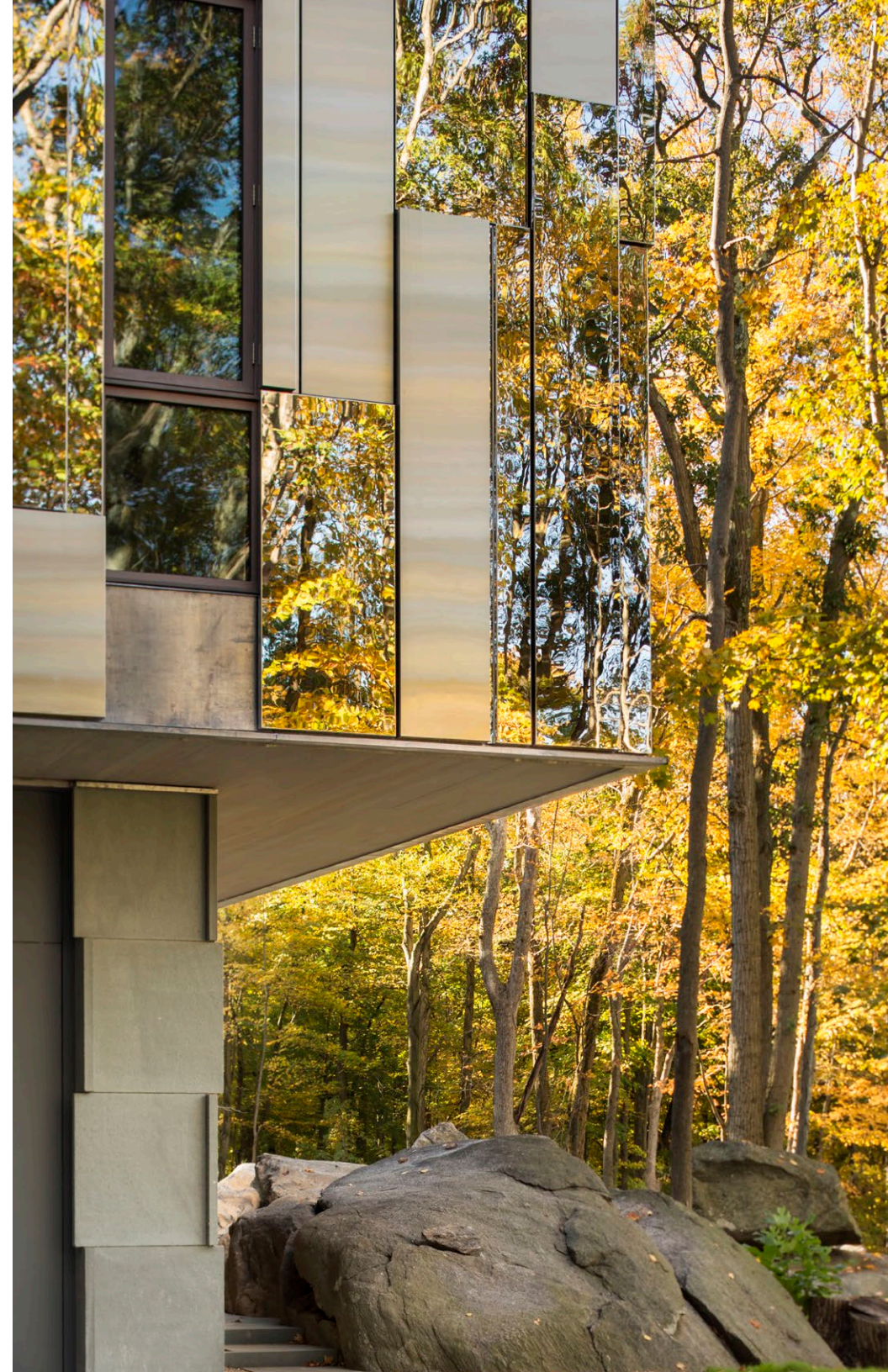
Dezeen Magazine, “Pound Ridge House by KieranTimberlake reflects its surroundings with a mirrored façade,” 2016

Architectural Record, Houses Issue, “Pound Ridge House by KieranTimberlake,” 2015

Architect’s Newspaper, “A shiny Westchester home, designed by KieranTimberlake, reflects its woody surroundings,” 2015

I have personal knowledge of the nominee’s responsibility for this project, in which he was largely responsible for design.

Michael Kagan, Owner







3.0 Exhibits

Multifaith Center and Houghton Memorial Chapel Wellesley College

Wellesley, MA
2008

In 1992 Wellesley College set out on an uncharted path to create a new model for engaging religious diversity as part of its educational program to prepare students for an increasingly diverse American society. The 125-year-old Houghton Chapel became home to multifaith programs. However, it was not adequate to the new level of activity—particularly in the dark, dank basement where many functions were held—and did not reflect the spirit of the new programs. Jason embraced the challenges inherent in transforming a structure founded on Christian principles into a true home for religious plurality. His design leadership both amplified the originating artifact and created an intriguing modern counter position.

In response, Wellesley committed to a renovation of the Houghton Chapel to its original beauty. All building systems were replaced, acoustics were improved, and the building was enhanced with accessibility features including a discreet ramp to the altar. But the centerpiece of the project was the dramatic transformation of the basement level into the Multifaith Center for Religious and Spiritual Life. The chapel's basement was converted to a glowing central worship hall surrounded by three rooms and an open gathering space beneath the apse, all linked by activities of spiritual practice common to all faiths: meditation, study, prayer, and gathering for food and fellowship. The project has become a global commons on campus where people gather to nurture and celebrate all particular forms of religious and spiritual practice, offering new opportunities to explore religious diversity.

Design Firm

KieranTimberlake

Role of Nominee

Principal

AIA Awards

2009 AIA Pennsylvania
Citation of Merit

Additional Awards and Certifications

Honor Award For Design
Excellence, Higher Education
Design Awards, 2009, Boston
Society of Architects

Publications

Faith & Form Magazine, "Design
From Dialogue." vol. XLII, no. 3,
2009

I have personal knowledge of the nominee's responsibility for this project, in which he was largely responsible for design.

Stephen Kieran, FAIA, Partner, KieranTimberlake





3.0 Exhibits

Atwater Commons Middlebury College

Middlebury, VT
2004

To accommodate a growing campus, Middlebury College converted its 2,250-student campus into five residential commons. Atwater Commons provides undergraduate housing with single bedrooms in suite configurations and a new 225-seat dining hall.

The dining hall is an elliptical glazed pavilion nestled into the woods that provides tree-level views out to the town of Middlebury and Green Mountains beyond. Its low height keeps the building engaged with the campus's natural slope, reducing its mass and allowing it to visually recede into the forest. Atop the dining hall is a planted roof that extends the campus green and beautifies the view from adjacent buildings.

The two new limestone-clad residential buildings are situated to frame views both within campus and out to the surrounding mountains and are sited to maximize natural airflow between existing ridge lines. This natural ventilation strategy, along with generous floor-to-floor height, ceiling and exhaust fans, operable windows, and plan arrangements that promote cross ventilation, passively cool the buildings and eliminate the need for mechanical air conditioning despite the buildings' year-round use.

In both embracing the traditions of this New England community and envisioning their future state, Jason's design and construction leadership on Atwater Commons extends the quality of campus experience at Middlebury for generations to come.

I have personal knowledge of the nominee's responsibility for this project, in which he was largely responsible for design.

*Luther Tenny, Assistant Director of Facilities Services,
Middlebury College*

Design Firm

KieranTimberlake

Role of Nominee

Associate in Charge

AIA Awards

2010 AIA New England Honor Award

2007 AIA Philadelphia Merit Award

2006 AIA Pennsylvania Silver Medal

2003 AIA Pennsylvania Honor Award (Unbuilt)

Additional Awards and Certifications

2007 Boston Society of Architects, Sustainable Design Award, Citation

2008 Building Stone Institute, Tucker Design Award

2008 Wood Design & Building Magazine, Wood Design Award, Honor Award

Publications

1000x Architecture of the Americas, Braun, 2008

Hinge Magazine, "On Campus: New Academic Architecture," 2007

Interior (Taiwan), 2007

World Architecture, 2005



