

This cover section is produced by the AIA Archives to show information from the online submission form. It is not part of the pdf submission upload.

2020 AIA Fellowship

Candidate Porie Saikia
Organization MTANY
Location Bayside, New York
Chapter AIA New York State; AIA New York Chapter

Category of Nomination

Object 4 > Public Service

Summary Statement

Porie Saikia has demonstrated exemplary leadership by driving design excellence in civic architecture and championing innovative project delivery to enhance the built environment experience, benefiting millions in the New York region and the world.

Education

- Master of Public Administration (MPA), New York University, New York, NY.

Years attended = 2 yrs

Degree received = MPA (Master of Public Administration)

- Interior Design Program, Parsons School of Design, New York, NY.

Years attended = 0.5 yrs

Degree received = None

- Bachelor of Architecture (B. Arch), Maharaja Sayajirao University, Baroda, Gujarat, India.

Years attended = 5 yrs

Degree received = B. Arch (Bachelor of Architecture)

Licensed in: 1. New York State- Registered Architect (RA)

2. United Kingdom - Chartered Member of Royal Institute of British Architects (RIBA)

3. International - Chartered Construction Manager, chartered to practice construction management internationally as certified by Chartered Institute of Building (CIOB) of United Kingdom.

Employment

2014 - Present

Director, Environmental, Sustainability and Compliance, MTA (Metropolitan Transportation Authority) NY

2012 - 2014

Founder & International Consultant, PRIA Global Inc. NY

2008 - 2012:

Business Vice President & Area Manager NY Region, CH2MHILL (CH2M/JACOBS)

2007 - 2008

Independent Consultant to the Indian Ministry of Railways with Superior Global Infrastructure Inc., New Delhi, India

2006 - 2007

Executive Director of AUWSF (Asian University for Women Support Foundation), Cambridge, Massachusetts and Chittagong, Bangladesh.

2003 - 2006

Chief Architect, Metropolitan Transportation Authority-New York City Transit, New York

1997 - 2003

Senior Associate, The LiRo Group, New York

1990 - 1996

Program Director, NYC Dept. of Design & Construction, NY (NYC Dept. of General Services)

1985 - 1990

Project Coordinator/Architectural Designer at NYC Dept. of Environmental Protection

Prior to 1985

Architectural Designer, Vollmer Associates-Engineers, Architects & Planners NY (Stantec)

Project Coordinator Facilities Management, Rockefeller University for Scientific Research.

Administrative Architect, Dept. of Town & Country Planning, Assam, India.



Pratt Institute
200 Willoughby Avenue
Brooklyn, NY 11205

Graduate Center for Planning and the Environment

*David Burney, FAIA
Academic Coordinator
MS Urban Placemaking and Management*

September 19, 2019

Paul Mankins, FAIA
Chair, Fellows Committee
The American Institute of Architects,
1735 New York Avenue, NW
Washington, DC 20006.

Re: Fellowship Nomination for Porie Saikia, AIA

Dear Chair Mankins:

I have known Porie Saikia personally for more than 15 years, both as a fellow public-sector architect and as a professional. Porie's career as a public-sector architect, as an advocate for women in our profession and for design quality and sustainability, and in her commitment to the profession represents the very best of what can be achieved by our profession. Porie has earned universal acclaim for her work, both with her peers and with her many clients.

From 2004 to 2014 I served as the Commissioner of the New York City Department of Design and Construction (DDC). During that period the DDC was implementing a "Design and Construction Excellence" program. At the same time Porie was the Chief Architect at the MTA NYC Transit where she was also working to raise the quality of design in public works. Porie brought together the MTA and the AIA NYC Chapter, opening the MTA to a new cohort of architects who had not previously undertaken MTA work. Porie was able to raise the quality of design work at the MTA to unprecedented heights. The result of Porie's work is evident in the designs for the MTA's Fulton Center, South Ferry Terminal, 7 Line extension and the 2nd Avenue subway.

Porie spent several years in private practice, returning to the MTA in 2014 as Director of Sustainability and Environmental Compliance. In that role she implemented several groundbreaking initiatives, including a study of the value and social impact of MTA's capital program and an assessment and analysis of solar potential in MTA facilities.

I often lament that too few of our profession enter public service, despite the tremendous influence we can have as professionals through a public service career. In her outstanding career Porie Saikia has been able to promote opportunities for women in the profession in both private and public sectors. She has successfully implemented a sustainability agenda where none existed before. She has brought design excellence to some of the most difficult areas of practice. Porie is a shining example of what can be achieved in the "Advancement of Living Standards- Public Service, Government, Industry Organization".

I strongly support her nomination for elevation to Fellowship.

Sincerely,

David Burney, FAIA
Academic Coordinator, MS Urban Placemaking and Management,
Pratt Institute
Commissioner, New York City Planning Commission
Board Chair, Project for Public Places
AIA Thomas Jefferson Award, 2011
AIANY Award of Merit, 2014
AIANYS James William Kidney Gold Medal, 2016

1.0 SUMMARY OF ACHIEVEMENTS

Porie Saikia has demonstrated exemplary leadership by driving design excellence in civic architecture and championing innovative project delivery to enhance the built environment experience, benefiting millions in the New York region and the world.

Promoting Design Excellence

- Transit Design
- Institutional Buildings
- Infrastructure Facilities

Chief Architect of Metropolitan Transportation Authority of NY from 2003 to 2006 Porie Saikia, used her oversight role to promote design excellence for MTA's post-9/11 rebuild and system expansion programs by instituting the Design Guidelines for New Underground Stations incorporating **transit architecture, sustainability standards and historic preservation, streamlining functional and operational efficiencies** resulting in the award-winning Fulton Center, two new line extensions into Hudson Yards and Battery Park, and a system expansion with the new Second Avenue Subway, all sporting innovative designs that integrate architecture, art and daylight into premier public spaces for millions of passengers.

Delivering the \$1.2b capital program for NYC Department of Correction, and liaising as architectural coordinator of over \$3b for infrastructure development for NYC Department of Environmental Protection, Porie led the award winning designs integrating art and architecture of correctional facilities, sewage and water treatment plants, **establishing architecture at the forefront of NYC's utilitarian buildings.**

Advancing Project Delivery Excellence

- Best Practices & Knowledge-Share
- Construction Manager Build Delivery
- Integrated Project Delivery

Porie, both as government client oversight and consultant delivering public projects, has ensured that given the increasing complexity of the environment, the excellence and effectiveness of designs are realized in construction **by strategizing, identifying and implementing alternate delivery options, creating collaborative structure that guarantees delivery efficiency.** This is reflected in her development of appropriate tools to bring projects to completion such as best practices manuals and guidelines, and pioneering project delivery methods such as CM Build and Integrated Project Delivery in the region and internationally, benefiting public projects.

Serving the Profession Leading the Industry

- Developing Guidelines & Manuals
- Creating Collaboration
- Building Capacity & Educating

On the third leg of creative excellence in the built environment, Porie, as a subject matter expert has served the profession by **facilitating local, regional and international knowledge share dialogues through collaboration that informs how the built environment is best supported** (1) between the architectural community and government entities that generate the largest amount of public structures and infrastructures (2) within the industry that produces policies, guidelines and cooperative associations, to advance the quality of the built environment and positively informing the development of public architecture and its delivery. As the head of Environmental Sustainability and Compliance at the Metropolitan Transportation Authority NY, Porie continues her leadership role to sponsor and endorse sustainability, energy efficiency, climate adaptation, resiliency and preparedness policies for design and delivery, **influencing the regional and international transportation industry.**

“While advocating for sustainability and diversity in the profession, improved transportation and urban placemaking, Porie is committed to enhancing professional standards throughout the industry in both developing and developed communities.” – Riewad V. Warjri, Ambassador of India to Colombia and Ecuador, Peru and Bolivia.

Keynote Speaker, 2012 Business Exchange Forum, Bogota, Colombia.

2.1 ACCOMPLISHMENTS / Significant Work

“In a unique career spanning both private and public practice, Porie demonstrates her determination to improve the quality of the built environment and to advance the architectural profession with design excellence and sustainability in public works. For over 30 years Porie has been promoting sustainable design for public sector projects resulting in award winning designs of facilities and infrastructure.”

– Richard T Anderson FAICP FCIQB NAC HonAIANY, President Emeritus New York Building Congress, President, RTA Advisory Services LLC

Promoting
Design Excellence

TRANSIT FACILITIES

Design Architect:
Office of the
Chief Architect –
NYCT
2004
Budget: \$3.6m



City Hall Station Renovation & Preservation New York, NY

Role: Chief Architect, Metropolitan Transportation Authority **Design Oversight.**

Under Porie's guidance, New York City's first subway station designed by Heins and LaFarge briefly opened to public for the NYC Subway's Centennial Celebration in October 2004 after it was completely restored to its original glory with historically significant elements. The restored City Hall station featured the re-enactment of the first subway (Interborough Rapid Transit-IRT) ride of October 27, 1904 from City Hall to 145th Street in Harlem.

Design Architect:
Lee Harris
Pomeroy
Architects
2003 – 2006
Budget: \$100m



Bleecker Street Station Renovation New York, NY

Role: Chief Architect, Metropolitan Transportation Authority **Design Oversight.**

Making pivotal design decisions, Porie facilitated the design of Bleecker Street Station blending historic elements with open and art induced lighting design to create a transfer between Broadway-Lafayette and Bleecker, two previously disconnected subway lines and making the station fully ADA compliant.

• **AIANY Excelsior Award** • **Victorian Society Award** • **Lucy G Moses Preservation Award**

Design Architect:
Lee Harris
Pomeroy
Architects
2005
Budget: \$60m



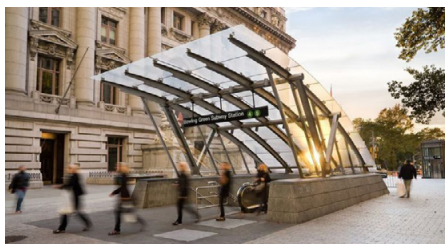
East 180 Street Station New York, NY

Role: Chief Architect, Metropolitan Transportation Authority **Design Oversight.**

Working closely with the design architect on the renovation of this historic Subway Station, Porie upheld the architectural championship of JP Morgan during the golden age of railroads in America. The design not only accomplished its historical restoration and its 21st century functional need but also rejuvenated the surrounding area in the Bronx.

• **AIANY Excelsior Award** • **Victorian Society Award** • **Lucy G Moses Preservation Award**

Design Architect:
Richard Dattner
Architect
2004 – 2005
Budget: \$4.3m



New Standardized Glass Canopy NY

Role: Chief Architect, Metropolitan Transportation Authority **Design Oversight.**

Under Porie's stewardship, NYC Transit's first modernistic glass entrance canopy at Bowling Green Station located in one of the oldest areas of Manhattan was designed to seamlessly blend with surrounding historic buildings without impeding any of their significance. The design served as a pilot for NYC Subway's future entrance canopies featuring natural light and covered ascent/descent from the elements.

Promoting
Design Excellence

TRANSIT FACILITIES, cont'd

Design Architect:
Richard Dattner
Architect
2005
Budget: \$82m



Columbus Circle Station New York, NY

Role: Chief Architect, Metropolitan Transportation Authority **Design Oversight.**

Renovated and expanded to facilitate increased level of service, this Heins and LaFarge designed Beaux Arts landmark station was re-designed under Porie's leadership, making the Columbus Circle Station part of a modern day landmark flanked by the Time Warner building and the Museum of Arts and Design, restoring its historic elements, introducing functional artwork, and making it ADA compliant.

Design Architect:
Lee Harris
Pomeroy
Architects
2003 – 2006
Budget: \$100m



Integration of Corbin Building New York, NY

Role: Chief Architect, Metropolitan Transportation Authority **Design Oversight.**

Purchased to increase capacity of the Fulton Center transit hub, Porie oversaw the skillful integration of the Corbin Building into the new glass enclosed transit hub, creating an underground tunnel access to World Trade Center and the Port Authority Trans Hudson (PATH) trains. Shepherding MTA's historic assets, Porie also initiated the inclusion of Corbin Building in the National Register of Historic Places.

• **Lucy G Moses Preservation Award**

Design Architect:
Office of the
Chief Architect –
MTA/NYCT
2005
Budget: \$190m



Stillwell Avenue–Coney Island Terminal New York, NY

Role: Chief Architect, Metropolitan Transportation Authority **Design Oversight.**

Porie led the renovation of the original station terminal built in 1910 connecting the Brighton and Culver Lines in an elevated structure, directing the design build team on the roof replacement of the system's first renewable energy project with custom designed solar panels to maintain the original design of the canopy.

Design Architect:
Lee Harris
Pomeroy
Architects
2005
Budget: \$14m



53 Street Substation #13 New York, NY

Role: Chief Architect, Metropolitan Transportation Authority **Design & Historic Preservation Oversight.**

Under Porie's guardianship, restoration and renovation of this four-story ornate Beaux-Arts style brick, stone and terra cotta façade started in 2005 after it was designated as a place of national historic significance. Renovated with its original winding filigree wrought iron staircase, replicated skylights, elevator, overhead cranes and recessed rotaries, design fully integrates transit's modern technology.

Promoting
Design Excellence

TRANSIT FACILITIES, cont'd

Design Architect:
Richard Dattner
Architect
2006
Budget: \$71m



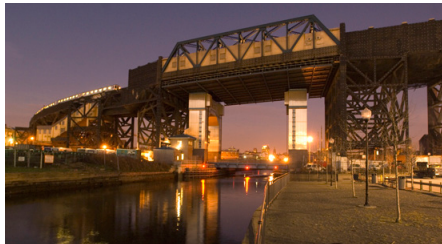
Myrtle Wyckoff Station New York, NY

Role: Chief Architect, Metropolitan Transportation Authority **Design Oversight.**

A beacon in the neighborhood, the Myrtle-Wyckoff Station Complex is a two-station intermodal transit node in Brooklyn. Porie oversaw the design combining the two station with a new ADA compliant, naturally ventilated headhouse with gracious circulation spaces and art mosaic on the ceiling creating a dramatic entrance to both subway stations, and the adjacent bus routes.

- **AIANYS Excelsior Award for Public Architecture**
- **Brick Industry Association's Brick in Architecture Silver Award**

Design Architect:
Gensler Architects
2006
Budget: \$35m



Smith & 9 Streets Station New York, NY

Role: Chief Architect, Metropolitan Transportation Authority **Design Oversight.**

For the expansion and rehabilitation of this highest transit station in the system featuring a new street-level control house, Porie engaged a new design firm, adding it to MTA's inventory of consulting architects and supported the design ideas of new materials and methods at the customer information centers, waiting areas, canopies and decorative, architectural fencing.

Design Architect:
Urbahn Architects
2005
Budget: \$94m



96 Street Station New York, NY

Role: Chief Architect, Metropolitan Transportation Authority **Design Oversight.**

When this IRT (Interborough Rapid Transit) station, originally designed in 1907 on Manhattan's West Side, was identified for renovation and expansion, Porie introduced a concept design workshop with the selected architectural firm and MTA-NYCT's in-house architects to inspire ideas, resulting in a game changer with a glass enclosed head house on the Broadway median with landscaped pedestrian plazas on either side making it a popular green oasis amidst a busy traffic intersection.

Design Architect:
Office of the
Chief Architect-
NYCT
2006
Budget: \$22m



Far Rockaway Mott Avenue Station New York, NY

Role: Chief Architect, Metropolitan Transportation Authority **Design Oversight.**

Under Porie's leadership and following the new design guidelines, rehabilitation of this terminal station on the Far Rockaway line created a naturally lit station environment for its passengers. In addition, the redesign resolved the ADA Challenges of the station.

Promoting
Design Excellence

TRANSIT FACILITIES, cont'd

Design Architect:
Office of the
Chief Architect-
NYCT
2003 – 2005
Budget: \$115m



Corona Signal Tower New York, NY

Role: Chief Architect, Metropolitan Transportation Authority **Design Oversight.**

Under Porie's direction, the contemporary design for this new signal tower, located near the National Tennis Center and the site of the 1939 and 1964 World's Fairs, streamlined train controls of the Flushing Line, the mass transit artery of Queens, NY, to reduce headways and increase train frequency. The circular control room of the signal tower in northwest corner of the yard provides a complete view of the entire yard.

Design Architect:
Ben Thomson
Associates
2006
Budget: \$148m



Charleston Bus Depot New York, NY

Role: Chief Architect, Metropolitan Transportation Authority **Design Oversight.**

With the Office of the Chief Architect setting design direction with schematic design to accommodate newer bus maintenance technology and sustainable operations in order to service and maintain over 220 buses for Staten Island, this facility was contracted under Design Build Delivery. The depot was built to expand express bus service in Staten Island.

Design Architect:
DiDomenico
Partners
2006
Budget: \$100m



Grand Avenue Depot New York, NY

Role: Chief Architect, Metropolitan Transportation Authority **Design Oversight.**

Developing concept design of this modern 500,000 square foot facility certified to Environmental Management Systems ISO 14001 specifications, a first at NYC Transit, Porie's office oversaw the completion of the four-story building comprising of all services including an advanced central maintenance facility, administrative offices, and employee parking on the roof.

• **New York Construction Magazine Top Project Award**

Design Architect:
STV Inc.
2003
Budget: \$118m



100th Street Bus Depot New York, NY

Role: Chief Architect, Metropolitan Transportation Authority **Construction Coordination.**

Porie, oversaw the schematic design development in-house and delivered under Design Build, this four-story, 350,000sf new bus maintenance facility reopened in September 2003 providing a safer and more efficient work environment. Renamed Tuskegee Airmen Depot, it is located at 1552 Lexington Avenue in the East Harlem neighborhood of Manhattan, and was a car barn for streetcars in 1895.

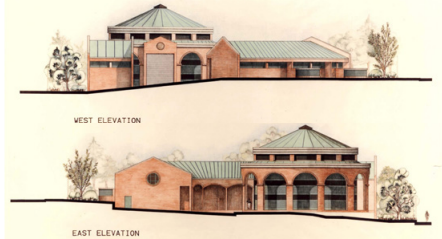
2.1 ACCOMPLISHMENTS / Significant Work

“Serving as Assistant Architect on my team at NYC Department of Environmental Protection, Porie succeeded in ensuring that quality architectural design and the incorporation of public art work, at infrastructure facilities was a top priority.” — Michael Cetera, RA, Former Chief Architect, NYC DEP

Promoting
Design Excellence

INFRASTRUCTURE FACILITIES

Design Architect:
Office of the Chief
Architect, NYC DEP
1989
Budget: \$10m
(superstructure)



Richmond Avenue Pumping Station Staten Island, NY

Role: Lead Architect, In-House Design, NYC Dept. of Environmental Protection.

The design for this new pumping station in a residential neighborhood of Staten Island called for a design that complemented the historic residential Richmond district of Staten Island. Developing a design by continuing the circular shaft from deep underground above ground to brick clad building with an arched wrap-around porch providing a less utilitarian appearance and thereby supporting its surroundings.

• **ACI Award 1991**

Design Architect:
Office of the Chief
Architect, NYC DEP
1989
Budget: \$25m



Gowanus Pumping Station Brooklyn, NY

Role: Lead Architect, In-House Design, NYC Dept. of Environmental Protection.

The design for the upgrade of Gowanus Pumping Station pays homage to the site's historic buildings and visually enhances the facility with a brick perimeter wall in a mix neighborhood in Brooklyn. Unique architectural elements introduced by the new design include a pediment and a plaque, scroll keystones in the windows, a stone water table and sills.

• **NYC Art Commission Award for Excellence in Design 1989**

Design Architect:
TAMS
1986 – 1987
Budget: \$1.2b



North River WPCP New York, NY

Role: Assistant Architect, Architectural Coordinator, NYC Dept. of Environmental Protection.

Stretching eight NYC blocks on the Henry Hudson Parkway, 69 feet above the Hudson River bed, this, one of the country's largest, sewage treatment plant processes 170 million gallons of raw sewage per day. Porie exclusively coordinated the design approval from all regulatory agencies for the gracefully designed facility and the ambiguous waterfront state park on its 28-acre roof.

• **Albert S. Bard Award for excellence in architecture and civic design from City Club NY, 1989**

Design Artist:
Ned Smyth
Architect of Record:
Malcolm Pirnie
1989
Budget: \$1m



Wave Wall in Green at Coney Island WPCP Brooklyn, NY

Role: Assistant Architect - Art & Architectural Coordinator, NYC Dept. of Environmental Protection.

Introducing functional art utilizing NYC's Percent for Art (1% of Construction cost) program Porie promoted the Wave Wall in Green as a perimeter security of the facility. The 10-25 feet high art Fence, covered in green and depicting imagery of waves, water, islands and shoreline, is a salient public art.

• **Art Commission Award for Excellence in Design 1989**

2.1 ACCOMPLISHMENTS / Significant Work

"I say this from my personal experience of working with Porie from 1992 to 2003, that she directed and delivered design and construction of Correctional Facilities and related infrastructure at NYC's Department of Design and Construction, instilling design excellence for buildings that are most of the time, considered utilitarian at best."

– Luis M Tormenta PE, Former Commissioner, NYC Dept of Design and Construction. CEO The LiRo Group

Promoting
Design Excellence

INSTITUTIONAL BUILDINGS

Design Architect:
SBLM Architects
1992 – 1995
Budget: \$24m



Brooklyn House of Detention Brooklyn, NY

Role: Program Director, NYC Dept. of Design & Construction Project Oversight.

Promoting the visually complementary façade redesign of Brooklyn House of Detention relating to the surrounding commercial and social street scene in one of Brooklyn's priciest neighborhoods, Porie oversaw the management of the complete design and construction of the project.

Design Architect:
Gonchor & Sput
1990
Budget: \$7m



Rose M. Singer Correctional Facility Rikers Island, NY

Role: Program Director, NYC Dept. of Design & Construction Project Oversight.

Under Porie's direction in design through construction, Rose M. Singer Center in Rikers Island—an 800-bed facility for female detainees and sentenced inmates initially opened in 1988—underwent a major renovation of its interior work to include a café for its female inmates following a job training program for incarcerated persons.

Design Architect:
Gonchor & Sput
1992
Budget: \$161m



Vernon C. Bain Center Bronx, NY

Role: Program Director, NYC Dept. of Design & Construction Project Oversight.

Designed in New York, built in New Orleans to NYC Department of Correction's specifications, and installed on the waters of East River bay across from Rikers Island, this five-story, 47,326-ton jail barge housing 800 beds, received specialized project management expertise from Porie at its helm.

• **Named the world's largest prison barge in operation by the Guinness World Records in 2014**

Design Architect:
Gonchor & Sput
1992 & 1996
Budget: \$142m



George R Vierno Center Rikers Island, NY

Role: Program Director, NYC Dept. of Design & Construction Project Oversight.

Porie directed the George R. Vierno Center designed to include all amenities of a modern correctional facility, which was opened in 1992 as a 850-bed facility on Rikers Island to house NYC's growing detainee population. It was further renovated to include a modernized food service program in 1996.

2.1 ACCOMPLISHMENTS / Significant Work

“Porie has advocated that alongside the adoption of project management standards and tools to create quality facilities, organizations must invest in the resources to enhance the performance and effectively manage the prioritization process to build a better organizational behavior and delivery efficiency, and to that end Porie has persuaded our organization to redefine our processes.”

– Palmina Whelan FCMAA MCIOB, Managing Director , Corporate Real Estate & Facilities, American Airlines

**Advancing
Project Delivery Excellence**

BEST PRACTICES

2019 – ongoing



Renewable Energy – Sustainable Practice New York

Role: Director, Environmental Sustainability & Compliance / Metropolitan Transportation Authority.

To open up new revenues with little to no capital investment of its own, Porie initiated a program for MTA to lease its 10 million square feet of industrial roof space on MTA properties suitable for solar development, for private entities to install solar panels, generate clean electricity, and sell it back to the municipal grid — a sustainable green opportunity seized, with the first set of facilities in procurement.

2019 – ongoing

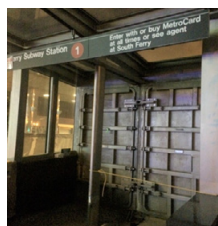


Paris Agreement & UN Science Based Target Initiative New York

Role: Director, Environmental Sustainability & Compliance / Metropolitan Transportation Authority.

To commit to United Nation’s Science Based Target initiative (SBTi) towards reducing global temperature by 2degrees, Porie is developing strategies and moving Metropolitan Transportation Authority of New York towards low carbon, climate resilient and green economic pathways.

2014 – ongoing



Climate Adaptation Designs and Standards New York

Role: Director, Environmental Sustainability & Compliance / Metropolitan Transportation Authority.

Following Superstorm Sandy, Porie was employed at the MTA to oversee climate adaptation policies, playing a key role in seeking, investigating, testing and identifying best practices and methods and establishing new standards to adapt to the new-normal environment of climate change, significantly, the Design Flood Elevation—the height against which MTA assets must be defended. The new standards including marine doors and trap doors, are currently in place at the MTA’s underground subway stations.

2017



Energy-Efficiency at Grand Central Terminal New York

Role: Director, Environmental Sustainability & Compliance / Metropolitan Transportation Authority.

Under Porie’s leadership on Energy Efficiency initiatives at the MTA, New York City’s iconic Grand Central Terminal met and surpassed NY State’s mandate to reduce 20% energy uses by 2020 for public facilities.

• **Energy Efficiency Award from NY State Power Authority 2017**

BEST PRACTICES, cont'd

**Advancing
Project Delivery Excellence**

2017 – 2018



Smart Grid Framework for Kaduna State, Nigeria

Role: Consultant / PRIA Global Inc.

By invitation of the government of Kaduna State, Nigeria, Porie developed and delivered a Smart Grid framework for urban development offering a social return on sustainable investments. With a sense of nationalism on the rise in the country, the benefits of building a sustainable environment for the under-served communities as defined in the framework was well received and is currently on its way to becoming a part of Kaduna State Land Development Policy.

2012 – 13
Design Architects:
Gruzen Samton
Staffelbach
Gensler



Integrated Project Delivery at American Airlines

Role: Consultant / PRIA Global Inc.

Contracted to assist American Airlines in assembling IPD teams, Porie guided and monitored the IPD Process through Target Output Cost phase confirming and locking in budget. Using AIA IPD contract documents. She walked the teams through the first three projects designed at LGA, JFK & DFW, maintaining AA's requirement for customer attraction, reducing change orders that traditionally had been a burden.

2013
Bogota,
Colombia



Infrastructure Best Practices Advocacy Bogota, Colombia

Role: Subject Matter Expert on Alternate Project Delivery for Infrastructure / PRIA Global Inc.

With lecture/presentation series on Innovative Technology, Sustainable Infrastructure and alternate Project Delivery, Porie led a team successfully advising Colombia Congressional Commission "Sexta" of the Colombia Senate to restructure Colombia's Infrastructure, Transportation and Transit Oriented Development policies. The policy was voted into the legislature in Dec 2013 after the advisory session.

2006



Design-Build Delivery at Asian University for Women Bangladesh

Role: Executive Director for Asian University for Women Support Foundation.

The delivery of AUW campus' first building with cross-Atlantic and cross-cultural team of professionals came with a near impossible deadline. To facilitate the expediency, Porie developed workshops to coach local architects, engineers and contractors on DB process focusing on diversity and inclusion prior to the RFP was set in motion, resulting in the formation of eight DB teams, all of whom bid within 5% of the concept estimate.

1995



CM Build Delivery for NYC Projects, NYC Government

Role: Program Director for NYC Dept of Design and Construction.

Leading NYC Dept. of Correction's Capital Program Delivery in the face of various Federal mandates with high penalties, Porie crafted the NYC Public Sector's first Construction Manager Build protocol. Working with the City's Corporate Counsel and the Mayor's office, AIANY, CMAA and ACECNY, she obtained all around consensus to float the first CM Build contract for a \$200m project at Riker's Island.

Serving the Profession
Leading the Industry

BEST PRACTICES, cont'd

2017 – 2018



Project Management Manual for American Airlines

Role: Consultant / PRIA Global Inc.

Porie developed a complete step-by-step manual to manage AA Corporate Real Estate & Facilities projects from inception to completion. Prior to this manual, the AA CRE managers were working intuitively and by word of mouth from their colleagues, as the previous manual was too daunting and elaborate, hence never used. The new Manual remains in full utilization on each project at AA.

2008–2010

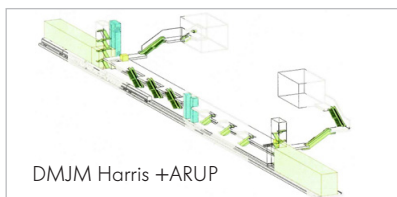


CMAR for Highway Project – a TRB Guidebook, National

Role: Industry Expert / CH2MHILL.

Porie was appointed as an “Expert Panelist, part of a national team of experienced practitioners and research specialists” by the Transportation Research Board (TRB) of the NCHRP to resolve industry issues of delivering highway projects nationally. Result was a Guidebook for Construction Manager-at-Risk Contracting for Highway Project defining a process for CMAR delivery for transportation agencies.

2004



Planning and Design Guidelines for New Underground Station New York

Role: Chief Architect / Metropolitan Transportation Authority.

New stations, reflecting the provisions in these guidelines, reaffirm the proud heritage of the engineering marvel that NYCT Subways represented at the beginning of the 20th century. Under Porie’s leadership, the Office of the Chief Architect directed the creation of the guidelines that included design excellence, functional priorities and mandates for sustainability, environment, ADA, safety and security.

JURY SERVICE

2014



ENR (Engineering News Record) “Best Projects Award” for Design & Construction

Role: Juror.

2010
2011
2012



NYU Polytechnic Construction Management Final Thesis for Graduate Program

Role: Juror.

2003 2004
2005 2006



CMAANY Construction Management Project of the Year Award annually

Role: Juror.

KNOWLEDGE-SHARE

Serving the Profession
Leading the Industry

2015



AIANY and Climate Change Program

Role: Seminar Panelist, Director Metropolitan Transportation Authority.

Invited to present at AIANY's two-day seminar on policy, planning and design on adopting to a hotter climate, Porie shared MTA's perspective, process and undertakings to the AIA members and industry attendees for their professional benefit and participation.

2012

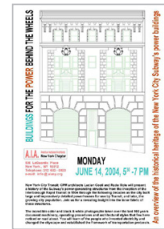


AIANY and COFTEC – Institutional Cooperation

Role: Facilitator / AIA Member.

Porie initiated the agreement between AIANY and COFTEC (Chongqing Foreign Trade and Economic Relations Commission/China), to establish non-binding institutional cooperation promoting effective communication, exchange of ideas and knowledge to apprise AIA members of Chongqing's development strategy and facilitate invitations to bid for new architectural design projects in the Greater Chongqing.

2004



Subway Architecture at AIANY

Role: Facilitator, Chief Architect Metropolitan Transportation Authority.

Porie championed the AIANY collaboration with NYC Transit's Office of the Chief Architect in bringing New York's 100-year legacy of subway architecture with "Buildings for the Power Behind the Wheels" series providing historical significance, modernization of the plants, sub stations and power houses, informing attendees of MTA's processes for current requirements, upgrades and upcoming projects

2004



NYC Subway Architecture Exhibition at AIANY

Role: Facilitator, Chief Architect Metropolitan Transportation Authority.

Sponsored AIANY to curate an exhibition of NYC's Transit Architecture from its opening day of 1904 through 2004, with designs by Heins and LaFarge, to designs by MTA's in-house and consulting architects, offering viewers transit design excellence, efficiency and functionality that augments technology through the century.

2003



Learning by Design at AIANY

Role: Facilitator, Chief Architect Metropolitan Transportation Authority.

Porie volunteered the services and support of her office for Learning by Design projects at Foundation for Architecture and AIANY organized workshops for Barrier Free Entrance Design for Second Avenue Subway, educating elementary school students on Design for the Handicapped, Transit Architecture and Sustainability.

Serving the Profession
Leading the Industry

KNOWLEDGE-SHARE, cont'd

2015 – 2019



Smart Cities Prague Forum

Role: Think Tank Member.

For the Smart Cities Think Tank, initiated in 2015 by the Municipality of Prague, Prague Technical University, and the Parlamentum Europaeum, Porie has been leading the Sustainable Urban Growth discussions elevating the focus on mass transit as a significant contributor to GHG reduction, promoting international exchanges and knowledge-share on Climate Change, Smart Technology and Smart Growth.

2012 – 2019



Future Cities Workshops for Finnish Professionals

Role: Developer & Facilitator / PRIA Global Inc.

Porie has been successfully conducting three-day thematic workshops on Livable Cities, Future Cities, Regenerative Cities & Sustainable Cities for professionals at various levels for the Real Estate Design and Construction Industry in Finland via three Finnish industry organizations, KIINKO, RAKLI and 3L Education since 2012, directing their exposure to New York's diverse portfolio of design and construction projects.

2007 – 2014

IDCMAsia



“Building Back” Workshops in Post Tsunami Phuket

Role: Facilitator / Organizer.

Porie initiated, developed coordinated and conducted capacity building trainings annually, to enable local industry professionals on preparedness, resiliency and rebuild after the Tsunami in Thailand in collaboration with the Asian Institute of Technology in Bangkok (AIT) and Thai Police and Rescue teams.

2012 – 2014



UN-ITC “Women in Trade” initiative – United Nations

Role: Facilitator / Consultant.

Porie introduced a workshop program enabling women to enter the construction industry at ITC, the UN Global Platform for Action aiming to increase women's share of corporate, government and institutional procurement for greater economic benefit to women. She personally conducted the first two in China and Mexico, resulting in ten contract agreements signed engaging attending women owned businesses.

2006



“Conversations on Transit Architecture” – MTA New York and LA-Metro

Role: Facilitator, Chief Architect Metropolitan Transportation Authority.

Initiating a collaboration between MTA-NY and LA-Metro, Porie facilitated an interagency exchange of ideas at LA Metro in conjunction with the AIA Convention in LA. The professional relationship developed between the two groups of transit architects continues to date.

COLLABORATION

Serving the Profession
Leading the Industry

2017



MOU - CTU Prague and CCNY New York

Role: Facilitator, Advisory Board Member, City College NY Civil Engineering.

Facilitated a Memorandum of Understanding between Technical University of Prague & City College NY for student exchange workshops and knowledge share seminars resulting in programs on an ongoing basis for students from Schools of Engineering and Architecture of the two universities, widening their horizon.

2013 – 2015



Council of Industry Women

Role: Creator & Facilitator as NY Building Foundation Governor.

Porie lobbied with the 95-year old New York Building Congress (NYBC) to create a Council of Industry Women's Organizations at the Building Congress providing a platform to facilitate cooperation and coordination among multiple women's organizations operating in design, construction and real estate industries. She led the Council as a Chair for three years. The Council continues to date as a permanent feature of the NYBC.

2015

Caring for Climate



United Nations C4C

Role: Facilitator representing Metropolitan Transportation Authority.

Working with United Nation's Global Compact, Porie established the MTA as a Signatory Member at United Nation's Caring for Climate (C4C) Program in 2015, resulting in MTA being recognized as top tier organization on climate, and featured in the journal of COP21-Paris for its resiliency policy and processes.

2013



South Asian Collaboration

Role: Facilitator / Organizer.

Porie created collaborative platform among the ministries of building and construction of Cambodia, Myanmar, Thailand, Vietnam and Laos in Bangkok for political and administrative leadership of each country to interact, discuss and exchange ideas on their plans for urban growth, transportation and infrastructure for mutual benefits. The collaboration developed into similar programs on their own initiatives.

2012



NYBC/USA and CIOB/UK Collaborative Agreement

Role: Facilitator.

In an effort to enable design and construction professionals from United States access to local information and knowledge, Porie in her role as the Governor at New York Building Congress (NYBC) and Ambassador at Chartered Institute of Building (CIOB), brought the two organizations together to sign an Agreement to help US firms and individuals get CIOB support world wide.

CAPACITY BUILDING

Serving the Profession
Leading the Industry

2013 – 2019



CIOB CCNY Novus

Role: Facilitator as CIOB Ambassador.

Established the Chartered Institute of Building (CIOB) NY Chapter for Architecture and Engineering students at the City College of New York. Porie continues to work as the advisor of the chapter, helping it win the International Chapter of the Year Award in 2018.

2018 – 2019



Resiliency Workshops, South America

Role: Partnering Facilitator as an industry expert.

In partnership with Technical University of Madrid and UPADI (Pan American Union of Engineers), Porie leads the workshop agenda and content for stakeholders making policy decisions on risk and resiliency, creating an exchange platform and an advisory group for South American infrastructure ministries.

1998 – 2019



ACE Mentor Program, New York

Role: Mentor.

A mentor for over 20 years at the ACE (Architecture Construction Engineering) Mentor Program of America, Inc., Porie conducts semester long workshops for high school students, educating and inspiring them to pursue careers in Architecture Engineering and construction.

2014 – 2016



Chartered Institute of Building Training for NYC Public Sector Proj. Managers

Role: CIOB's Americas Ambassador.

Porie introduced CIOB's practice of building and construction for the benefit of society to NYC's largest public-sector design and construction agency resulting in a two-year contract with NYCDDC for CIOB to provide web based construction project management training for the agency's project managers.

2007 – 2013



Capacity Building in Post War Iraq

Role: Co-Founder, Tree of Life Professional Development Inc.

Through Tree of Life, a not-for-profit organization with its collaborating Partners- the US State Department, and US Departments of Transportation, Porie designed a program to train Iraqi construction professionals on Construction Management, both in Iraq and NYC, delivering training towards rebuilding of post-war Iraq.

2006



CCM Recognized at MTA-NYC Transit

Role: Chief Architect at Metropolitan Transportation Authority.

Initiated Construction Management Certification as a requirement for Construction Project Managers at the MTA – New York City Transit. With trainings conducted by Construction Management Institute of America (CMAA), a large numbers of project managers at MTA were certified, and the requirement for Construction Project Managers was included in MTA's Construction RFPs.

2.1 ACCOMPLISHMENTS / Significant Work

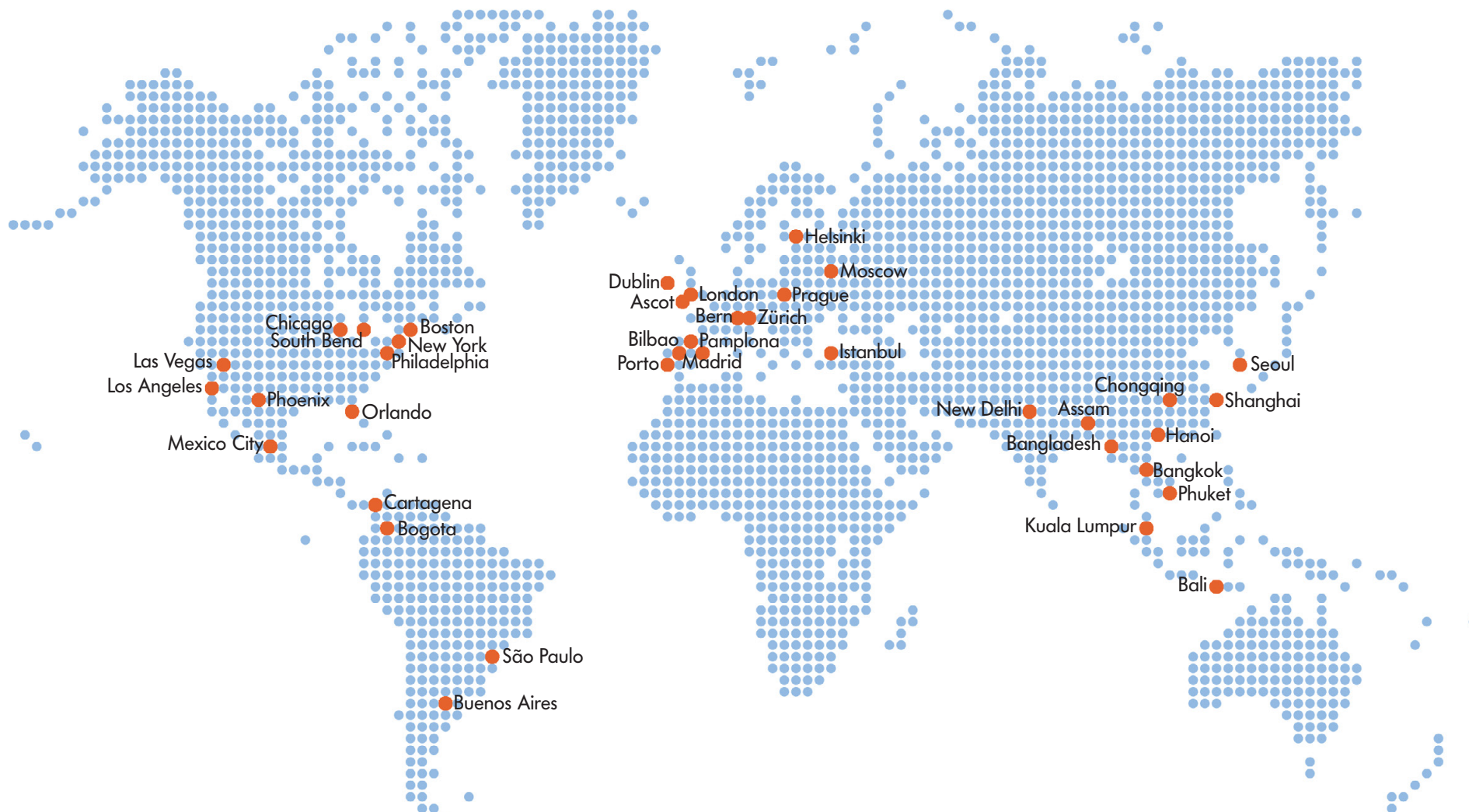
“An excellent collaborator and an enthusiastic coach, Porie has shown exemplary leadership in blending advocacy, capacity building and knowledge share for the built environment and has been a role model for women and young professionals in the industry, as well to students in schools and colleges.”

– Prof. Dr. Ing. Miroslav Svítek, dr.h.c., FEng., EUR ING, President of Czech Smart City Cluster,
Dean Emeritus, Faculty of Transportation Sciences, CTU Prague

Serving the Profession
Leading the Industry

BUILDING CAPACITY & EDUCATING

● Indicates locations of events where invited as presenter, lecturer, panelist



BUILDING CAPACITY & EDUCATING Industry Presentations

Serving the Profession
Leading the Industry

Oct 2019
New York City



American Public Transportation Association
Invited speaker for *Transit's Link to Livable Communities*.

Oct 2018
Cartagena,
Colombia



Pan American Congress
Keynote address *Resiliency*.

May 2019, 2018,
2017, 2016, 2015
Prague,
Czech Republic



Smart Cities Symposium Prague
Keynote presentations at 1st/2nd/3rd/4th/5th Czech Technical University, IEEE/European Union organized forum on *Smart Cities, Regenerative Cities, Livable Cities, Sustainable Mobility*.

May 2018
New York City



Smart Cities New York
Moderator: *Sustainable Infrastructure of the Future*.

Oct 2017
New York City



Smart Cities New York
Moderator: *Sustainable Infrastructure of the Future*.

Nov 2015
New York City



Trans-Atlantic Industry Thought Leaders Forum
Moderator: *Sustainable Infrastructure of the Future*.

Oct 2015
Pocantico Center,
NY



Beverly Willis Architecture Foundation (BWAFA)
Speaker on *Smart Cities* on video forum hosted by Atkins

May 2015
Chicago, IL



ICSDEC (International Conference on Sustainable Design, Engineering & Construction)
Keynote and Workshop presenter on *Sustainable Infrastructure*.

Sep 2014
New York City



UITP/Transportation Forum in UN Climate Summit of United Nations General Assembly
Speaker/panelist on *Sustainable Mass Transit*.

Jan 2012
Oct 2011
Helsinki, Finland



Finland Real Estate & Construction Leadership Forum
Speaker on *Urbanization* (2011) and *Mega Projects Delivery* (2012).

BUILDING CAPACITY & EDUCATING Industry Presentations, cont'd

Serving the Profession
Leading the Industry

Oct 2011 Kuala Lumpur, Malaysia		International Chamber of Commerce (ICC) Malaysia Speaker on <i>Construction Logistics</i> at the International Construction Industry Forum.
Apr 2011 New York City		Special Industry Leaders Round-table on Public Private Partnership Presenter on <i>P3 Delivery</i> .
May 2010 New York City		NY Transportation Forum Presenter on <i>Sustainable Transit – Developing an Action Agenda</i> .
Mar 2010, 2009, 2008, 2007 Bangkok, Thailand		International Design & Construction Management Asia Forum (IDCM Asia) Keynote Speaker on <i>Sustainable Development</i> . Presenter on <i>Mass Transit, Green Mobility, Construction Management</i> .
Jan 2008 Assam, India		Confederation of Indian Industry Summit (CII) Speaker addressing <i>Urban Infrastructure</i> at NorthEast India Development Summit.
Oct 2007 New York City		Commercial Real Estate Woman New York Panelist on New York City's <i>Waterfront Development</i> .
May 2007 Las Vegas, Nevada		CMAA Leadership Conference Speaker/Moderator on <i>Sustainability and Public Transportation</i> .
Oct 2006 Ascot, UK		CIOB/ICPMU Joint International Conference Speaker on <i>Designing, Building and Operating in A Sustainable World</i> .
Jun 2006 Los Angeles, CA		AIA National Conference Speaker on <i>Transit Architecture</i> .
May 2006 Philadelphia, PA		CMAA Annual Conference Speaker & Panelist on <i>Construction Risk Management</i> .

BUILDING CAPACITY & EDUCATING Industry Presentations, cont'd

Serving the Profession
Leading the Industry

Mar 2006
New York City



AIANY
Speaker on *Architecture as Public Policy* at the Theme Conversation Series.

Oct 2005
New York City



Council on Tall Buildings and Urban Habitat
Presented on *Urban Growth & Public Transit* at the Council's 7th World Congress.

Sep 2005
New York City



India Green Building Council
Guest Speaker presenting on *Iron Horses: Green Machine* at the International Green Building Conference.

Jul 2005
Moscow, Russia



Moscow Metro
Keynote speaker on *Transit Architecture-NYC*.

Apr 2005
New York City



New York Building Congress
Presenter at NYBC Architectural Council on *Transit Architecture and MTA Capital Program*.

Mar 2005
Seoul, Korea



Construction Management Association of Korea
Keynote speaker on *Risk Management* at the 4th International Conference.

Oct 2004
New York City



AIANY
Speaker on *Collaboration Underground*.

Oct 2003
New York City



AIANY
Speaker at on *Transit Architecture & Lower Manhattan Transit Work Post 9-11*.

BUILDING CAPACITY & EDUCATING Educational Lectures & Presentations

Serving the Profession
Leading the Industry

2018



Pratt Institute School of Architecture Construction Management Program, NYC
Guest Lecturer on *Smart Cities*.
Graduate School of Architecture, CCNY
Guest Lecturer on *Sustainable Infrastructure*.

2014



University of Navarra, Pamplona, Spain
Guest lecturer on *Project Management, Construction Management*.

2010-2014

NYU Polytechnic
Guest Lecturer on *Construction Management*.

2005



Hanyang University, Seoul Korea
University of Seoul, Korea
Guest lecturer on *Construction Management*.

2005



University of Notre Dame, School of Engineering, South Bend Indiana
Feature Speaker at the Dean's Distinguished Lecture Series.
Keynote Speaker at Chi Epsilon Honor Society's Regional Conclave in Indiana

Women Empowerment Lectures & Presentations

2014



Feature speaker at the **Global Female Leaders' Summit** in Zürich.

2013



Panelist at the 5th annual UN Global Compact *Inclusion: Strategy for Change* in NYC.

2012

Conducted WVEF/UN workshop on *Challenges in the Built Environment* in Mexico City.

2010 & 2012



Panelist at McGraw Hill's **Ground-Breaking Women** in Construction Conference, New York

2011



Panelist at UN/ITC/COFTEC **International Women Executive's Forum** in Chongqing, China.

2010



Panelist at *Leadership Role of Women in Sustainable Development* at CIOB Congress in Shanghai.

2005



Keynote at **Society of Women Engineers'** Conference in Indiana.

2002

Radio presentation at National Science Foundation on **Women in Science and Technology Program**.

LEADERSHIP POSITIONS

Serving the Profession
Leading the Industry

2010 – 2019



Americas Ambassador, Chartered Institute of Building (CIOB). Established CIOB's first Americas Office in the US (New York).

2017 – 2019
2010 – 2017
2012 – 2016



Senior Advisor, New York Building Congress
Governor, NY Building Foundation of NY Building Congress
Chair, NY Building Congress Council of Industry Women (Initiator)

2010 – 2019



Advisory Board Member, Civil Engineering Department, Grove School of Engineering, City College of New York. Initiator of CCNY's Novus Chapter in 2015 that won the international award in 2018.

2006 – 2019



Founder/Director, Tree of Life, Professional Development Inc. creating US-Iraq professional hands on training program with sponsorship from the US State Department.

2007 – 2019



Co-Chair, International Design and Construction Management Forum (IDCM Asia). Led the establishment of International Construction Management Day in 2010, observed to date.

2010 – 2014



Advisory Board Member, WTS International - Advancing Women in Transportation. Mentoring entry level women in the transportation industry nationally.

2011 – 2018



Trustee, Beverly Willis Architectural Foundation for Women (BAAF). Led the grant request effort and received grants for three years in a row from NY Building Foundation for programs.

2010 – 2017



Co-Chair, UN ITC/Intracen International Forum for Women Entrepreneurs in the Built Environment, initiating over ten contracts signed for entrepreneurial women owned businesses.

2011 – 2013



Board Director, International Construction Project Management Association (ICPMA), Europe. Initiated ICPMA Mentor Program at international universities in Turkey & Philippines.

2011 – 2012



Board Director, American Council of Engineering Companies (ACECNY)

2010 – 2012



Board Director & Recording Secretary, Women Builders Council (WBC). Lobbied for Diversity & inclusion resulting in increase of women owned business set asides for public projects in New York.

2005 – 2006



National Director & International Chair, CMAA (Construction Management Association of America) National Board. Collaboration with CIOB/UK resulting in CMAA certified CCMs to be recognized as MCIOBs

2003 – 2006



President, Construction Management Association of America (CMAA) NYNJ, winning two Chapter of the Year Awards.

PROFESSIONAL ACHIEVEMENT AWARDS / PERSONAL CONTRIBUTIONS RECOGNITIONS

2018		FJ Gerstner Medal of Merit Recipient for Transportation Science Development at CTU, Prague, Czech Republic, which recognizes distinguished academic contributions / <i>Individual.</i>
2018		“Unknown New York- City that Women Built” – A film Recognition for design responsibility of Fulton Center, NYC / <i>Individual.</i>
2015		BxW NYC / Built by Women NYC Awarded for Fulton Transit Center as the Chief Architect of MTA-NYCT from BxW / <i>Group.</i>
2014 2002 2006		CMAANY Construction Management Award For Project Delivery / <i>Individual.</i> CMAANY Professional Achievement Awards , (two) / <i>Individual.</i>
2011		International Chamber of Commerce Malaysia (ICC Malaysia) Honored for Advocacy and Contribution to the construction industry in Kuala Lumpur / <i>Individual.</i>
2011 2014		Chartered Institute of Building Elevated to Fellow (FCIOB) for outstanding contribution to the international construction industry and advocacy for women / <i>Individual.</i> Recognition of Achievement Award / <i>Individual.</i>
2009		Women Builders Council (WBC) Outstanding Women in Construction Award from / <i>Individual.</i>
2009		Boy Scouts of America Good Scout Honor Award from / <i>Individual.</i>
2008		Society of Indo-American Architects and Engineers (SIAEA) Professional Achievement Award / <i>Individual.</i>
2006		CMAK (Construction Management Association of Korea) Honoree for Construction Management / <i>Individual.</i>
2005		Pittsburgh Corning Circle of Design Excellence Award for MTA NYCT Projects / <i>Group.</i>
2004 1989		NYC Arts Commission /Public Design Commission Design Excellence Awards for MTA NYC Transit / <i>Group.</i> Design Excellence Award for Infrastructure Project at NYC Dept. of Environmental Protection / <i>Group.</i>

2.3 ACCOMPLISHMENTS / Significant Publications



PUBLICATIONS BY CANDIDATE / Individual & Group

- “Smart Cities” – A series of articles published by Assam Tribune –an Indian daily– on the Concepts of Smart Cities. **Individual.**
- “Saving the Planet” -- MTA publication 2018 on Mass Transit and Green House Gas Emissions / **Team.**
- “Project Management Manual” for American Airlines CRE & Facilities / **Individual.**
- “Climate Adaptation Task Force Resiliency Report” – MTA publication 2017 on MTA Resilience measures / **Team.**
- “MTA & Climate Change” – MTA Publication 2017 on Climate Change Policies at the MTA / **Team.**
- “Responding to Hurricane Sandy” – Article for UN COP21 Adaptation publication 2015 / **Team.**
- “Sandy Proofing” – Article in the Global Construction Review (GCR) Magazine UK 2013 / **Individual.**
- “Risk & Resiliency After Sandy” – NYBC Publication, 2013 / **Team.**
- “Manual for World Class Railway Stations,” – Indian Railways publication, 2009 / **Team Lead.**
- “A Guidebook for Construction Manager-at-Risk Contracting for Highway Projects” – for NCHRP 2008 / **Team.**
- “Building for the Power Behind the Wheels” – MTA publication- 2004 on NYC Powerhouse Designs / **Team Lead.**
- “Design Guidelines for New Underground Stations” – MTA publication, 2004 / **Team Lead.**

PUBLICATIONS ABOUT CANDIDATE

- MTA at the Forefront of Environmental Sustainability – Earth Day 2017 MTA.
- SMART CITIES Prague2015 – Press Release-international scientific symposium by CTU Prague & Prague TV clip.
- Global Female Leaders-Interview at GFL Summit Publication, Zürich April 10, 2015.
- “Porie Saikia-Eapen Arkitektoa” – *Beria Bilbao*, February 13, 2014- a regional Newspaper in Bilbao, Spain.
- Arq Porie Saikia-Eapen, “El transporte en Nueva York es vital, nuestro objetivo era reconstruirlo lo antes posible” – University of Navarra, Spain February 26, 2014.
- “Porie Saikia-Eapen elected as head of Council of Industry Women’s Organizations in the Built Environment” – ICPM, March, 2013 – News article by International Construction Project Management Assoc.
- Ground Breaking Women of CIOB – Journeys of Ten Women (including Porie) in the International Construction Focus- a publication by “Woman Talent” magazine in Chongqing, China for UN Intracen 2011.
- “Still Bumping up Against the Glass Ceiling” – Article published by *ICON*, 3rd Quarter 2010.
- MTA Scales Back – *New York Times*, June 29, 2005, on Fulton Center & NYC Transit Chief Architect.
- “The cast of CPM Architecture, the parts that they play, and how they work their magic on a variety of projects.” *CPM NEWS*, MTA NYCT, Autumn-Winter 2003.



3.0 EXHIBITS LIST

Promoting Design Excellence

- 3.1** **Fulton Center** New York, NY
Photo Credit: Patrick Cashin, MTA Staff Photographer; Copyright Credit: Mark Heavey, MTAHQ
- 3.2** **7 Line Extension** New York, NY
Photo Credit; Patrick Cashin, MTA Staff Photographer; Copyright Credit: Mark Heavey, MTAHQ
- 3.3** **South Ferry Terminal** New York, NY
Photo Credit; Patrick Cashin, MTA Staff Photographer; Copyright Credit: Mark Heavey, MTAHQ
- 3.4** **Second Avenue Subway** New York, NY
Photo Credit; Patrick Cashin, MTA Staff Photographer; Copyright Credit: Mark Heavey, MTAHQ

Advancing Project Delivery Excellence

- 3.5** **Asian University for Women** Chittagong, Bangladesh
Copyright Credit of Renderings: Katsuki Sakai, AUW
- 3.6** **Systemwide Food Service Program** Department of Correction, NY
Copyrighted Work: Shlomo Steve Wygoda, SWA Architecture & Hardee Saini, NYC Department of Correction

Serving the Profession Leading the Industry

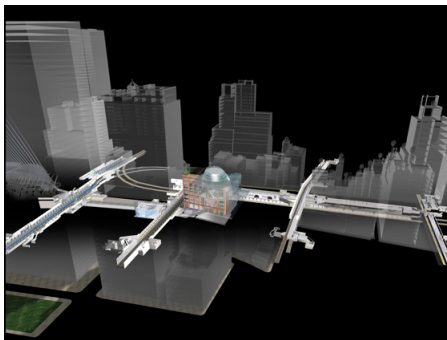
- 3.7** **Manual for World Class Railway Stations** India
Copyright Credit of Renderings & Content: Superior Global Pvt. Ltd. And IRSDC Ltd.
- 3.8** **Business Exchange Forum** South America & South East Asia
Copyrighted Work: Porie Saikia (nominee)

Grimshaw Architects/Lee Harris
Pomeroy Architect/ARUP
Design Complete: 2006
Construction Complete: 2016
Cost: \$1 .2b

Synopsis

Fulton Center is a major portal into the New York City subway system, with 300,000 travelers passing through the transportation hub each day. Located in lower Manhattan, the Fulton Center was designed with the goal of enhancing the commuter's experience by connecting six separate subway stations.

Primary Objectives for this new above ground building of MTA NYCT was to (1) Create Lower Manhattan Transit Hub linking stations on the A, C, J, M, Z, 2, 3, 4 & 5 lines, (2) Provide better access and overcome frequent bottlenecks at transfer points, (3) Support post 9/11 economic recovery, which resulted in a distinctive above ground structures in the 100-year-old subway system.



Fulton Center New York, NY

Role

Chief Architect at MTA NYC Transit, Porie championed the iconic architecture of the building, set design direction and led the design process from inception to completion, implementing MTA's newest design guidelines for a facility with best-in-class environmental sustainability, access, wayfinding, connectivity and safety standards, as well as integration of the brick and terra-cotta clad historic Corbin Building into the new modern glass and steel transit hub. For the first time in the history of MTA's projects, Porie initiated design review by a Jury of Peers at the AIANY with this project.

Challenges

- Connecting 6 independent stations and 10 subway lines into seamless flow, designed with the highest safety and environmental standards, providing enhanced customer experience.
- Elegant integration and inclusion of adjacent historical building to gain space for the hub.
- Connectivity to Port Authority Trans Hudson (PATH) and World Trade Center through a dense historic downtown.
- Bringing daylight down to the multiple platform levels.
- Complying with NYC Planning Commission's mandated "canyon wall" on Broadway.

Resolution

- An underground tunnel was created to connect to PATH at WTC. Representing MTA at City Planning, Community Boards and various stakeholders' discussions, Porie successfully shepherded an integrated and functional design through the NYC Planning Commission that had previously recommended its Broadway façade to be a high wall.
- The final design, reviewed and applauded by AIANY's Jury of Peers, emerged as the iconic structure creating a destination place in addition to a major transfer hub.
- With daylight streaming through a reflective glass top oculus, celebrating a brilliant integration of art and architecture, and adaptive re-use of historic Corbin Building's foundation to create the passageway to PATH at World Trade Center, the design improved passenger distribution, wayfinding, level of service and overall customer experience.

Awards

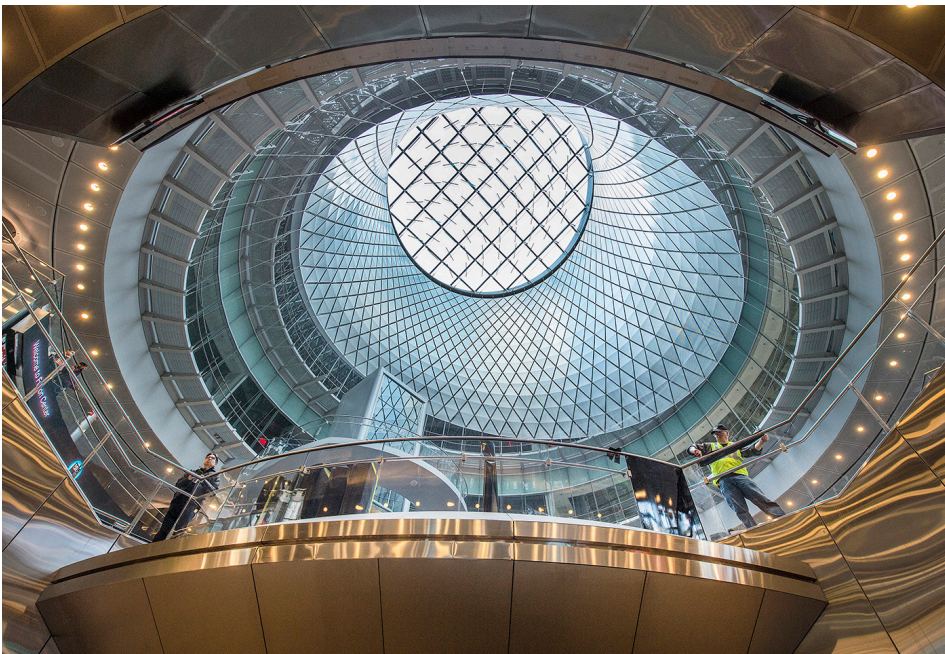
- ENR New York Project of the Year

Declaration of Responsibility

I have personal knowledge of the nominee's responsibility for the exhibit listed above. That responsibility included:
Project under direction of the nominee

Andrew Whalley FAIA, RIBA, FRSA
Chairman, Grimshaw Architects
Design Architect for Fulton Center

3.1 EXHIBITS – Promoting Design Excellence / Fulton Center – Metropolitan Transportation Authority, cont'd



3.2 EXHIBITS – Promoting Design Excellence / 7 Line Extension – Metropolitan Transportation Authority

Dattner Architects/WSP
Design Complete: 2006
Construction Complete: 2015
Cost \$2.1 b

Synopsis

The extension of the Flushing Line/7, named a Heritage Trail by the Smithsonian, from its previous terminus at Times Square with a terminal station at 34th Street and 11th Avenue, provides the only subway service to the West Side of Manhattan below 59th Street.

The project's Environmental Impact Statement considered the extension of the subway line as well as the expansion and modernization of the Jacob K. Javits Convention Center to contribute to the rezoning of the west midtown area of Manhattan with commercial, residential and recreational development expected to total over \$20 billion. The station's modern amenities include air-tempered platform level, wide passageways, 14 Help Point Intercoms, 8 On-The-Go digital information kiosks, 5 digital information panels, and cell phone/Wi-Fi connectivity, offering a new level of service and communications for customers.



7 Line Extension New York, NY

Role

Chief Architect, MTA NYC Transit with directive oversight of planning and design of the extension, station and entrances with extensive outreach and coordination with NYC Planning Commission and the development community, Porie ensured that the extension enables the new and growing neighborhood's transit needs. Porie's architectural design oversight and committed support for the architect's vision of the iconic design of the station and its modern technology, safety and comfort features has won the design many awards.

Challenges

- Emblematic architectural design mandate as the gateway to the convention center and new entertainment venue at Hudson Yards.
- Design coordination of 7 Line systems building structures and other on-going designs of overbuild structures by private developers.
- Maintain integrity of the existing subway station at Times Square and access to the platforms at 125ft below street level with extensive underpinning while planning a tunnel in close proximity to two Amtrak tunnels and three Lincoln Tunnel tubes.

Resolution

- EIS, completed in 2004, has been called the most complex document of its kind in New York history. MTA's planning and design of the extension with the new terminal station offers an impressive access to the Jacob Javits Convention Center, the High Line and Hudson River Park, and serves as a catalyst for the development and transformation of the rezoned (in 2005) far West Side of Manhattan.
- The station features three ADA accessible, hi-tech customer assistance and safety enhanced public floors. Between the two entrances of the new terminal station, sixteen escalators (nine high-rise, seven low-rise), four elevators (two vertical, two inclined), eight sets of stairs, and one elevator access from the lower mezzanine to the platform level comprise the stations ascent/descent operations.
- Integration of public art at the station entrance further complements the richness of the design.

Awards

- AIA NYS Excelsior Award
- Engineering News Record (ENR) – Best of the Best Airport/ Transit Project
- Excellence in Civic Space Award Urban Land Institute New York
- Engineering Project of the Year – Global Infrastructure Forum
- ACEC NY – Diamond Award for Excellence
- ACEC NY – Empire Award for Excellence
- ACEC National – Grand Award for Excellence.

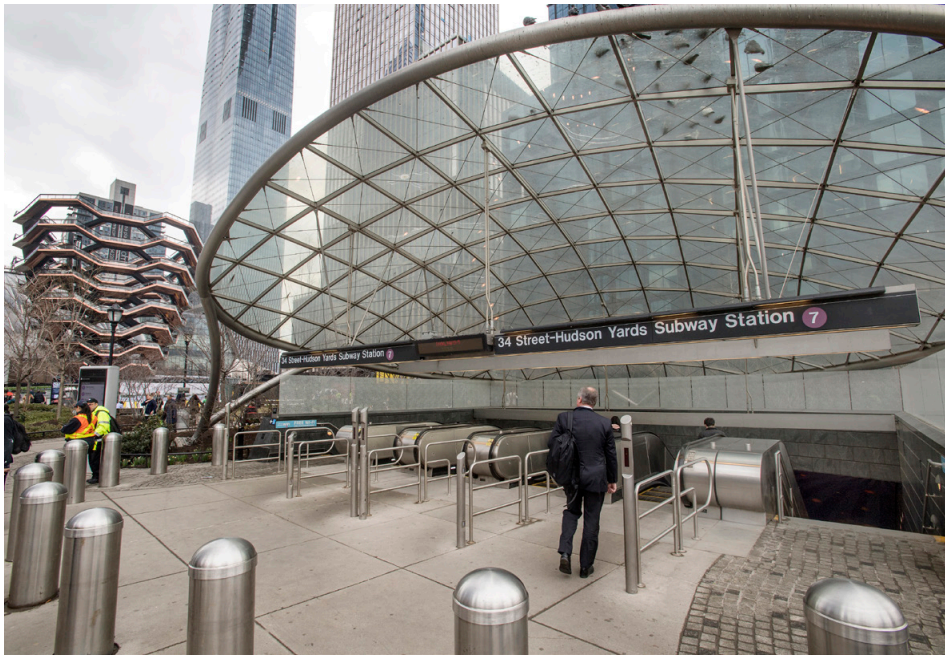
Declaration of Responsibility

I have personal knowledge of the nominee's responsibility for the exhibit listed above. That responsibility included:
Project under direction of the nominee

Beth Greenberg FAIA

Principal, Dattner Architects
Design Architect, 7 Line Extension

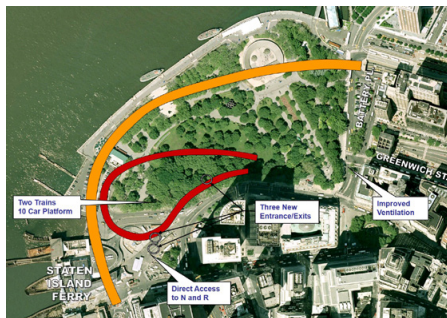
3.2 EXHIBITS – Promoting Design Excellence / 7 Line Extension – Metropolitan Transportation Authority, cont'd



Office of the Chief Architect MTA-NYC
Transit
Design Complete: 2006
Construction Complete: 2009
Cost \$600m

Synopsis

South Ferry/Whitehall Street is a New York City Subway station complex in the Financial District, WTC. Post 9/11, the severely damaged station was redesigned to replace the loop constructed in 1905. Extended from the old station with a structural box, the new state-of-the-art station, with multi-functional facilities designed to eliminate physical and operational deficiencies and in compliance with local and federal laws, all applicable codes of NYC Transit, is located at the eastern end of Battery Park with connectivity to R/W line at Whitehall Street Station and the Staten Island Ferry Terminal. The existing historic station was preserved and continued to operate throughout construction.



South Ferry Terminal New York, NY

Role

Chief Architect leading a team of MTA-NYCT in-house architects to redesign the devastated station, reconfiguring to meet current needs of operation and future growth. Agency liaison with Battery Park Conservancy and NYC Parks for the park extension, NYCDOT for connectivity to Staten Island Ferry Terminal, NYC Office of Historic Preservation for safeguarding of historic significance of the area, and Downtown Alliance to service projected urban growth including visitors to year-round destinations at Statue of Liberty and Governor's Island.

Challenges

- New station with entrances and substations in the park, maintaining regulations of National Park Service and need of continuous pedestrian flow.
- Avoid permanent adverse impacts to terrestrial vegetation and wildlife at Battery Park.
- Register existing South Ferry station in the National Register of Historic Places and preserve its historic elements while designing and constructing the new extension. Research, identify and preserve artifacts.

Resolution

- A new connection and a free transfer was created between the Broadway–Seventh Avenue line's 1 train and the Broadway Line's R and W trains, cutting travel time for hundreds of thousands of daily commuters.
- The new air tempered, ADA compliant station platforms accommodating 10 cars decreased headways from four minutes to two minutes, and the three new entrances bolstering post 9/11 development of lower Manhattan considerably eased congestion, complementing the park extension.
- Improvements to Battery Park included bike lanes, kiosks and plazas.
- Integration of large-scale decoration at the entrance concourse, a 150-foot parabolic wall, 14 feet high, covered with site-specific art work –“See it Split, See it Change” of tree branches in fused glass panels.

Recognition

“New Station Opens at South Ferry.” *The New York Times*, March 16, 2009.

“New South Ferry Terminal is reverential toward the city's history.” *Architect's Newspaper*, January 21, 2009.

Elevated MTA-NYCT Architects to the status of “post 9/11 mega project designer” alongside private firms.

Declaration of Responsibility

I have personal knowledge of the nominee's responsibility for the exhibit listed above. That responsibility included:

Project under direction of the nominee; Largely responsible for design; Nominee's firm executed project.

Cosema “Connie” Crawford PE

Senior VP, Rail/Transit Global Practice Leader, Louis Berger
Former Senior VP & Chief Engineer, for the project at MTA

3.3 EXHIBITS – Promoting Design Excellence / South Ferry Terminal – Metropolitan Transportation Authority, cont'd



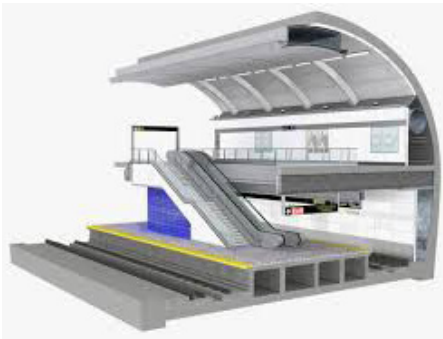
3.4 EXHIBITS – Promoting Design Excellence / Second Avenue Subway

AECOM/ARUP Jt. Venture
Fox & Fowle Architects
Concept Design Complete: 2006
Construction: Phase 1 complete 2017
Total Estimated Cost: \$18.5.1b

Synopsis

Second Avenue Subway is a new subway line on the east side of Manhattan from 125th St. in Harlem to Hanover St. in Lower Manhattan, consisting of 16 new stations and 1 renovated station with transfers to 7 other lines, covering over 8.5 miles of new track. Planned to be constructed in four phases, when complete, the new line will carry over 510,000 riders daily.

The concept design and planning for the entire line was completed by the first consultant team with design development for each phase contracted through additional consultant teams. A by-product of resolution of key design issues relating to the project include System- Wide Standards, Station Configuration and Entrances, Energy Efficiency and Sustainability etc., were compiled to become the Planning and Design Guidelines for New Underground Stations for NYC Subways.



Second Avenue Subway New York, NY

Role

Chief Architect, MTA NYC Transit, advocating sustainable design prototype, Porie sponsored new and innovative station design parti for the new Second Ave Subway line. A signatory authority of MTA's New Underground Station Design Guidelines defining architectural concepts for Entrances, Wayfinding, Safety, Level of Service, Ease of Movement and Environmental Comfort as standards for new subway stations, she diligently enforced it in the design of all 16 stations. Agency representative for Architectural Design presentations to stakeholders, communities, regulatory and funding organizations as well as the AIA and the architectural community.

Challenges

- Reduce the overall width of the station, simplify passenger orientation and signage thereby lowering cost.
- Accommodate state-of-art escalator entrances maintaining sidewalks for pedestrian circulation.
- Provide clear visual communication and orientation for passengers, promoting security throughout station.
- Design ancillary building for HVAC to complement the mixed-use neighborhood.

Resolution

- Collaborative design led to structural need dictating architectural form, to minimize station width with a center platform option was selected. Entrances located off sidewalks in plazas or within buildings to maintain pedestrian flow. Each station to be served by multiple entrances containing vertical circulation elements of escalators, elevators and stairs, reducing congestion and providing convenient, weather-protected, customer access. Set Level of Service (LOS) at C to determine required capacity at peak operation periods.
- Oversight of the Planning and Design Guidelines for New Underground Stations, where consensus on each issue was reached through working groups and decisions were used to provide a basis for design for future stations. Twenty-one key issues, including Security and Safety, Fire and Life Safety, Accessibility, Operations and Maintenance, System-Wide Standards, Station Configuration, Entrances, Fare Collection Area, Lighting, Acoustics, and Ventilation, Energy Efficiency and Sustainability, were each developed to become a chapter in the adopted Planning and Design Guidelines for New Underground Stations.

Award

- 2004 City of New York/US EPA Green Building Design Award

Declaration of Responsibility

I have personal knowledge of the nominee's responsibility for the exhibit listed above. That responsibility included:

Project under direction of the nominee

Sudhir Jambhekar FAIA, RIBA, LEED AP COA

Senior Principal Emeritus, FXCollaborative Architects LLP
Former Design Architect, Second Ave Subway, Fox & Fowle Architects with AECOM/ARUP Jt. Venture

3.4 EXHIBITS – Promoting Design Excellence / Second Avenue Subway, cont'd



Perry Dean Rogers Planners Architects
Safdie Architects
Design Start: 2006
Construction: Ongoing

Synopsis

The Asian University for Women came out of the World Bank/UN Task Force on Higher Education and Society In 2000, resulting in an international university in Chittagong, Bangladesh seeking to educate a new generation of women leaders in Asia. Grants from the Goldman Sachs Foundation and the Bill & Melinda Gates Foundation in 2005 and 2006 provided the start-up funds that enabled AUW to become operational in 2008.

AUW Support Foundation, a 501(c)(3), based in Cambridge, Massachusetts, is governed by a board of directors that provides the planning, design and development services of the AUW Campus in Bangladesh.



Asian University for Women Chittagong, Bangladesh

Role

Executive Director of Asian University for Women Support Foundation (AUWSF) with oversight of planning and concept design of the Asian University for Women (AUW), a UN sponsored project for disadvantaged women of Asia to be built in Chittagong Bangladesh, Porie engaged and directed a cross cultural team of consultants, defining the concept phase integrating planning, design and construction with environmental sustainability and diversity, for expedited delivery.

Challenges

- Accelerated schedule when only project delivery method familiar to the Bangladesh design and construction industry was design-bid-build (DBB)
- Designers at odds with contractors leading to schedule delay and cost creep, was an industry norm.
- Intended to be a symbolic endeavor in design and delivery, lack of collaborative teams for a project of such international exposure was a major problem.

Resolution

- Using AUW project as a vehicle, Porie introduced and coached the industry professionals in Design Build (DB), resulting in 5 collaborative DB teams responding to the first project RFP.
- With bid incentives for apprenticeship, Porie introduced the concept of women in construction trades resulting in a 18% women inclusion in the first Design Build bid for the “Access Academy Building” of the campus, an unparalleled consequence in the Bangladesh construction industry.
- Porie mandated Occupational Safety and Health protocol, resulting in safety plans included in RFP proposals for the first project.
- Porie also crafted the first consultant team with American and Asian professionals for the project to facilitate knowledge-share, especially in the area of sustainability and design build delivery.

International Impact

- International consultants for architecture, engineering and construction from USA, Middle East, and Far East participated in the teaming exercise, DB engagements and bidding process by the end of 2006.
- Developed internship and mentoring for incoming students with local establishments, resulting in Citibank and Chevron signing a Memorandum of Understanding (MOU) with the University (AUW) in 2006 for internship programs.

Declaration of Responsibility

I have personal knowledge of the nominee’s responsibility for the exhibit listed above. That responsibility included:

Project under direction of the nominee

Omar Shareef

Consultant AUWSF

Former COO, Asian University for Women working with the Office of the Executive Director AUWSF for the project

3.5 EXHIBITS – Advancing Project Delivery Excellence / Design Build Delivery at Asian University for Women, cont'd



Through structuring of the procurement process Porie insured that Architectural Design Quality, Integrity and Intent are maintained through Design Build Delivery.



David Leibowitz Architects PC
Karlsberger Companies
LR Kimball
Design Start: 1995
Construction Complete: 1999
Cost: \$250m

Synopsis

The NYC Department of Correction, under the urgency of a court order, prepared a food service plan adopting new Food Service Technologies in 1993. This plan required replacing existing kitchens in fourteen inmate housing facilities to be converted into actual physical structures to support the provision of 60,000 meals a day, resulting in a capital program to construct six new kitchens and upgrade eight existing facilities to accept the new technology in food service, on a schedule dictated by the court. The new structures, five at Rikers Island and one at a borough facility, became part of a multifaceted design and construction effort, one of the most ambitious building programs outside of building a new facility the Department of Correction had undertaken.



Systemwide Food Service Program Department of Correction, NY

Role

Program Manager at the NYC Department of Design and Construction, Porie led three design teams, managing program budget and schedule affording the design teams freedom to maintain design quality consistent with the main facilities they supported. She championed alternate project delivery, later designated as Construction Manager Build (CM Build), directing two constructors, each paired with a designer, delivering the program within the set budget and defined schedule, maintaining architectural integrity.

Challenges

- Program included a jail in the downtown area directly adjacent to the fashionable neighborhood of Brooklyn Heights.
- Maintain a level of preservation mandated by the NYC Landmark Commission at some buildings located either in historically significant areas or adjacent to historically significant structures.
- Schedule constraints of 4 years to design, build and operate the new food service program due to a federal mandate, with the available option of being constructed under existing Wick's Law, where myriad of contractors on separate trade contracts independently report to City Government, promised an administrative nightmare and inevitable delays.

Resolution

- Porie led the creation of CM Build delivery process, obtaining the mandated City Council's approval to meet the schedule, with a selectively used matrix of fast track project delivery including DB and accelerated DBB.
- She identified dedicated teams from three architectural firms and two CM companies with specific design and construction plan for each new facility, maintaining uninterrupted feeding of inmates at facilities on and off Rikers Island during construction of the AMKC Kitchen on Rikers Island, the largest commercial type kitchen on the east coast producing over 30,000 meals a day, by stipulating an alternate hot food delivery plan, accomplished with a detail study of City's traffic patterns. Program was delivered on time.

Significant Impact

To maintain design integrity and quality, CM Build Delivery was crafted to provide the vehicle to achieve a fast track delivery while supporting the independently engaged architect during program and design. CM Build is currently a standard delivery method in NYC Public sector.

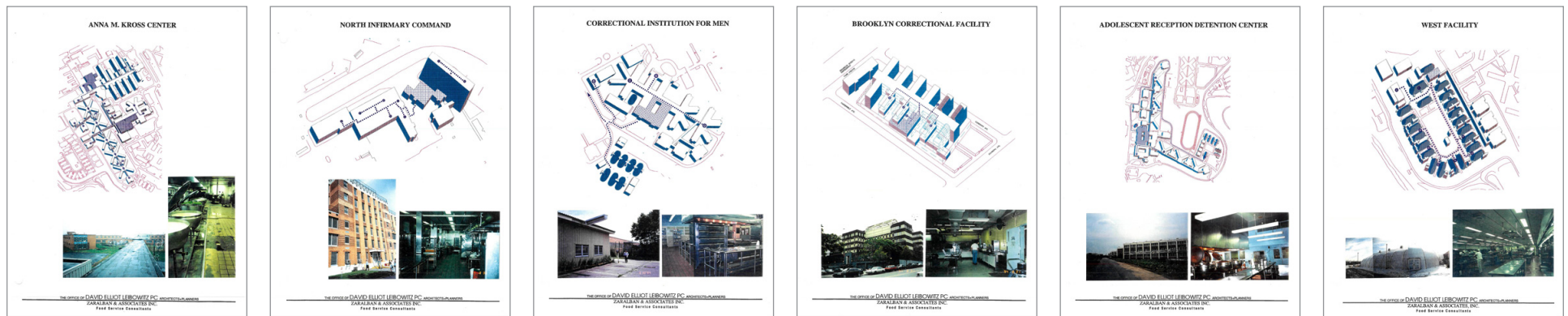
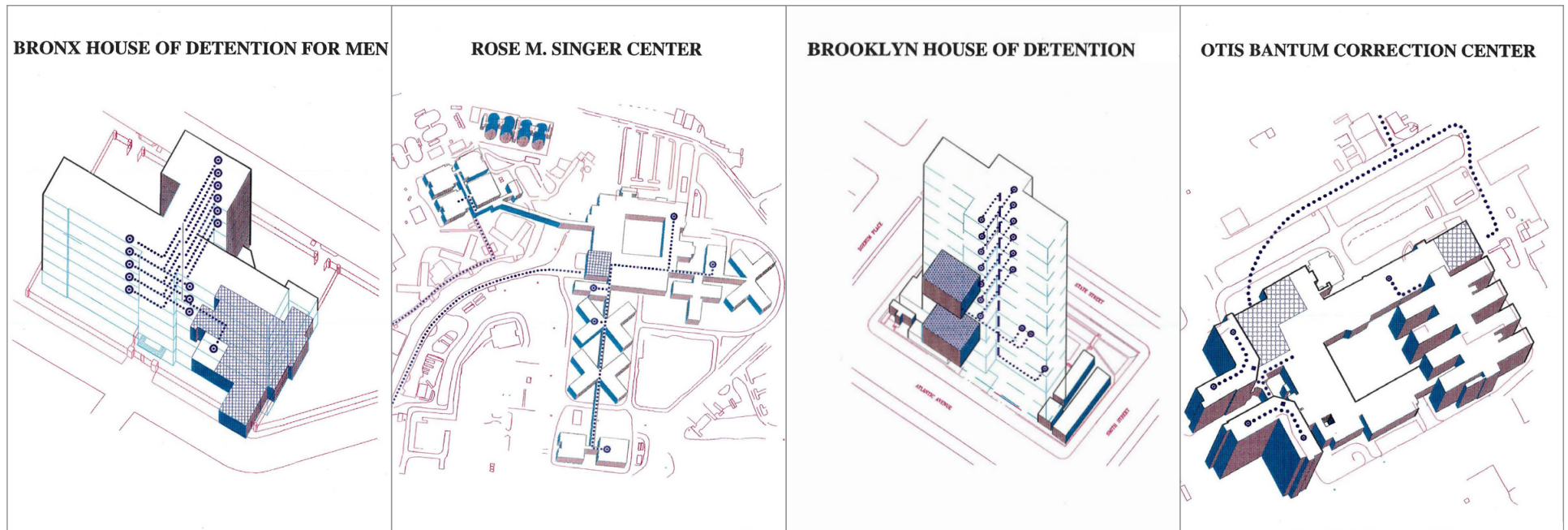
Declaration of Responsibility

I have personal knowledge of the nominee's responsibility for the exhibit listed above. That responsibility included:

Project under direction of the nominee

Shlomo Steve Wygoda RA: DE, PA, MD, VA NY, NJ, MA, DC
President SWA Architecture
Design Architect of Project, David E Leibowitz Architects PC

3.6 EXHIBITS – Advancing Project Delivery Excellence / CM Build Delivery at NYC Dept. of Correction



“Porie has led various alternative project delivery practices in the public sector by identifying processes that can be incorporate into the governmental protocol of procurement as well as the process of delivery incorporating transparency, diversity and equal opportunity mandates. Likewise, she has guided large private sector organizations to adopt and implement alternate delivery without sacrificing corporate mandates of transparency and fairness.”

– Michael S. Zetlin, HonAIA NYS Senior Partner, Zetlin & De Chiara

Fourteen NYC Correctional Facilities were assessed, analyzed for the new food service program under one design contract.

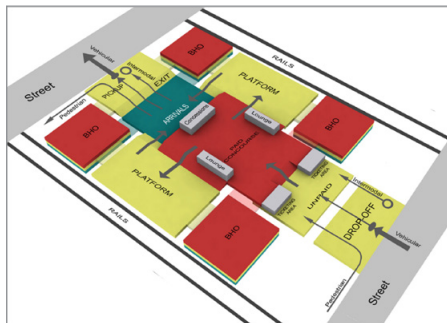
The facilities were redesigned and reconfigured under three design contracts, and delivered via CM Build Delivery.

Ministry of Railways, Govt. of India
2006-2009
Architects of Record for designs using the manual: M/S GMP; M/S Architect Kamlesh Parikh; Barsyl (India) & Sener (Spain)
Construction: Ongoing

Synopsis

Towards the pursuit of excellence to provide the best possible infrastructure for convenience and comfort of passengers and stakeholders, Indian Railways, and Land & Amenities Directorate of Ministry of Railways has developed and introduced a Manual of Standards and Specification for Railway Stations to be used for development of world class stations through Public Private Partnership.

The first of its kind, this manual has laid down set of guidelines, standards and specifications for the construction of new railway stations or redevelopment of the existing stations, to bring them up to the international standards.



Manual for World Class Railway Station for India

Role

Consultant to the Ministry of Railways-P3 Division, as Director of Architecture, Urban Planning and Sustainability for the India based Consulting Company of Superior Global Infrastructure Pvt. Ltd., Porie spearheaded the project team developing the Manual for Standards and Specifications for Railway Stations to encourage, support and augment the designer's architectural vision, while stipulating standards to achieve system-wide uniformity and efficiency.

Challenges

- Development of the new design guidelines and manual required challenging Indian Government's Urban Policy and Planning's lack of inter disciplinary approach to combine technical, social, economic and environmental knowledge for the benefit of the project.
- Completely overhaul India Government's 100-year old guidelines set by the British during late 19th century to integrate, accept and implement state-of-the-art technology.

Resolution

- Sharing proven knowledge of successful completion of MTA New Station Design Guidelines with the client and the team was crucial to the success of the project.
- With studies, data analysis and market research, Porie made targeted presentations to promote new ideas and convinced Indian Ministry of Railways Board of Directors to agree to the inclusion of the three-pronged philosophy of environmental, social and economic growth via infrastructure development, in the manual.
- Successful collaboration with Metro Rail Construction of India to identify new standards where railroad and metro spaces intersect, creating multi-modal functions.

Significant Impact

- The Manual was published by the Land & Amenities Directorate of Railway Board (Ministry of Railways) in 2009, to serve as a guiding document for design to deliver superior service to passengers at railway stations. The Manual is provided to architects and planners contracted to design all new and renovated railway stations in India under the Ministry of Railways.
- Four stations in India are currently under design via P3 design delivery, integrating railroad services with commercial and community facilities, by teams of local and international architects.
- Gandhinagar Station in the state of Gujarat is being designed to be LEED Platinum rated.

Declaration of Responsibility

I have personal knowledge of the nominee's responsibility for the exhibit listed above. That responsibility included:

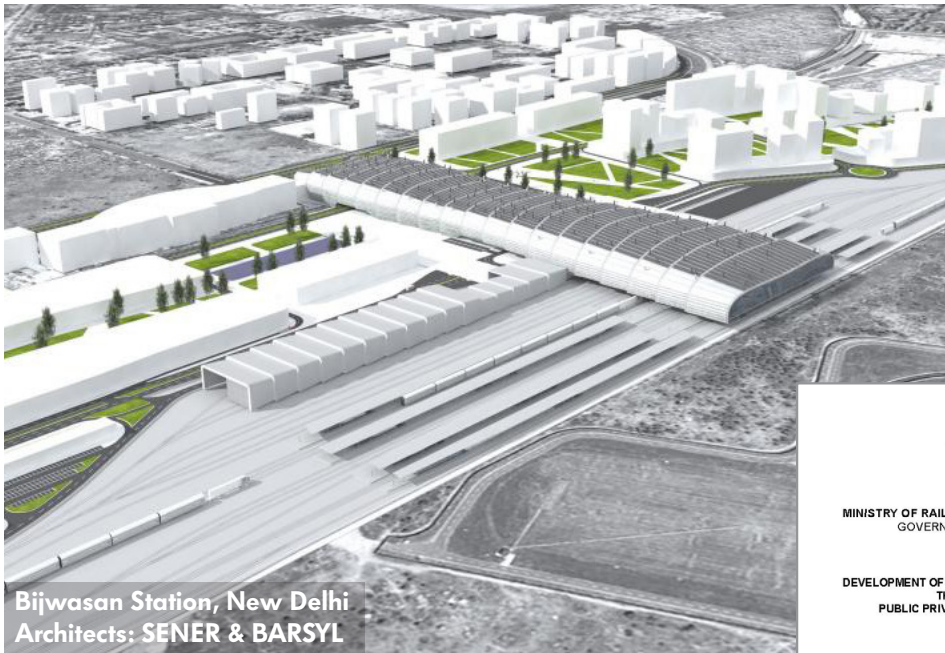
Project under direction of the nominee


Nominee's firm executed project

Ajay Singh

CEO, Superior Global Infrastructure Pvt. Ltd.

Prime Consultant to Ministry of Railways for the project




MINISTRY OF RAILWAYS (RAILWAY BOARD)
GOVERNMENT OF INDIA

DEVELOPMENT OF WORLD CLASS STATIONS
THROUGH
PUBLIC PRIVATE PARTNERSHIP

**MANUAL FOR STANDARDS
AND SPECIFICATIONS FOR
RAILWAY STATIONS**

June 2009

**Design currently
in development using
the new Manual**



Governments and Ministry representatives from:

- Thailand, Vietnam, Laos, Cambodia, Myanmar – 2012
- Colombia, Peru, Costa Rica, Ecuador – 2013

Synopsis

Business Exchange Forums were designed by Porie to enable US design and construction firms to pursue public sector work in untapped markets of South Asia and South America without elaborate individual marketing venture. Participation of each featured country's leadership is of the highest levels of government and decision makers, offering special assistance to US companies interested in doing business there. Business Exchange Forum is an exclusive copyright service of PRIA Global Inc., New York.



Business Exchange South America 2013 FORUM Bogota, Colombia

FORUM AGENDA

Day #1 - May 9th 2013

Welcome Address US Embassy
DIJIN Interpol Colombia
Insight to Teaming & Partnering in Colombia: A presentation by DIJIN Bogota

Presentation of Experience Portfolio: Premium Participating Companies
Experience highlights of the sponsoring companies' portfolio on delivery excellence and qualifications.

International Industry Organizations Roundtable
International industry organization in economic and business trade will meet to discuss a collaborative path forward for globally sustainable business strategies.

Day #2 - May 10th 2013

Welcome Address Ambassador, India Embassy
Opportunities in Three South American Countries: COLOMBIA, ECUADOR, COSTA RICA- A must attend presentation:
The senior most executives of each country will present their immediate future developmental plans. They will also discuss their expectations of foreign consultants as well as outline processes of foreign company engagement.

Private, One On One discussions with Sponsoring Companies and Countries of their choice.
Forum sponsoring company delegates will have the rare opportunity of meeting privately with country representatives for 90 minutes each to establish contacts and relationships to position themselves for upcoming pursuits, programs, opportunities.

Developing Partnership
Coffee and Networking to develop synergy and identify potential local partners from among the members of local design and construction organizations attending the event

Forum Venue: Radisson Royal Bogota Hotel, Calle 113 #7-65, Bogota-094861

Business Exchange Forums South Asia & South America

Role

Architect, creator and producer of the unique multi-country "Business Exchange Forum" with highest of the political and administrative decision makers in the arena of architecture, transportation and infrastructure opportunities in South East Asia and South America for American architects, Engineers and Constructors.

Challenges

- Connecting US companies to, and obtaining diplomatic consensus from highest levels of the governmental decision makers of multiple countries, to participate.
- Develop winning strategies, promote and market them to US companies for their benefits and consensus to participate in the forum.

Resolution

- First successful forum of 2012 in Bangkok, Thailand, resulting in two US based design firms invited for Myanmar Infrastructure Projects for Coastal Redevelopment Projects in Phuket, Thailand; the concept plan of Dragon City in Laos; and, a follow up Architectural Exchange Forum with invited US based design firms, hosted by Vietnam Society of Architects, in Ho-Chi-Min City.
- Second successful forum of 2013 in Bogota, Colombia resulting in two US based architecture firms invited to propose on the design for Colombia's new initiative on public housing.

Significant Impact

- US design and construction companies participating in the forum are able to enter international markets in countries of their interest and choice with support from the highest levels of the governments for public sector projects.
- One on one interactions included Secretary of State, Cambodia; Minister of Transportation and Land Development, Myanmar; Executive Director, Dept of Transportation, Vietnam; Vice Minister of Land Management, Urban Planning & Construction, Laos; Chair of Congressional Committee on Infrastructure Development, Colombia, and Ambassadors of Peru, Ecuador and Costa Rica in Colombia.

Declaration of Responsibility

I have personal knowledge of the nominee's responsibility for the exhibit listed above. That responsibility included:
Project under direction of the nominee;
Nominee's firm executed project.

Robert Bennett PE

President, RABCO Engineering, Offices in New York & Thailand
Participant at Business Forums 2012 and 2013

3.8 EXHIBITS – Serving the Profession – Leading the Industry / Creating Collaboration-Building Capacity, cont'd



2012
Meeting with country representatives at Business Exchange Forum Bangkok/2012. From left to right: Director of Transportation – Thailand; Vice Minister of Land Development, Urban Planning and Construction – Laos; Minister of Land Development and Construction – Myanmar; Secretary of State – Cambodia; Porie Saikia – PRIA Global Inc.; Director –CIOB UK; Director – PRIA Global Inc.



2013
Business Forum sessions concludes with Ambassadors from Peru, Ecuador and Costa Rica, and Senators of Colombia Senado (Porie Saikia – PRIA Global Inc. – front, second from right)



2013
Senior leadership of four US companies meeting with Colombia Congress at the Capitolio Nacional (Porie Saikia, PRIA Global Inc. – second from right)