

JFR 13

JUSTICE FACILITIES REVIEW



JFR13

JUSTICE FACILITIES REVIEW

The American Institute of Architects
Academy of Architecture for Justice
Washington, D.C.



Copyright 2013 The American Institute of Architects
All rights reserved
Printed in the United States of America

The project information in this book has been provided by the architecture firms represented in the book. The American Institute of Architects (AIA) has no reason to believe the information is not accurate, but the AIA does not warrant, and assumes no liability for, the accuracy or completeness of the information. It is the responsibility of users to verify the information with the appropriate architecture firm or other source.

The American Institute of Architects
1735 New York Avenue, N.W.
Washington, DC 20006

2013 Academy of Architecture for Justice Advisory Group

Linda Bernauer, AIA
Catherine Chan, AIA, chair
Lorenzo M. Lopez, AIA
Elizabeth Minnis, AIA, past chair
Amy Ann Phillips, AIA

AIA Staff

Terri Stewart, CAE, managing director, Design and Practice Operations
Douglas Paul, managing director, Practice and Knowledge Resources
Kathleen Simpson, director, Knowledge Communities
Elizabeth Stepahin, manager, Honors and Awards
Virginia Ebbert, manager, Architect's Knowledge Resource

Design: designfarm
Editor: Janet Rumbarger

Cover photos, top to bottom: Rankin Inlet Healing Facility, Richard E. Arnason
Justice Center, Waterloo Region Courthouse

CONTENTS

Jury Members iv

Jury Comments vii

Citations

Rankin Inlet Healing Facility, Nunavut Territory,
Canada [correctional] 2

Richard E. Arnason Justice Center, Pittsburg, California [court] 6

San Diego County Women's Detention Facility,
Santee, California [detention] 10

Waterloo Region Courthouse, Kitchener, Ontario [court] 14

Correctional and Detention Facilities

New Model Prison for Mexico's Federal Penitentiary System,
Mexico City, Mexico 20

Wake County Detention Center, Phase 2 Expansion,
Wake County, North Carolina 22

Court Facilities

Chatham County Trial Courthouse, Savannah, Georgia 26

Franklin County Common Pleas Courthouse, Columbus, Ohio 28

George C. Young U.S. Courthouse and Federal Building,
Orlando, Florida 30

John M. Roll U.S. Courthouse, Yuma, Arizona 32

Lake County Judicial Center Expansion, Tavares, Florida 34

Stanley J. Roszkowski U.S. Courthouse, Rockford, Illinois 36

Superior Court of California, County of Kings, Hanford Courthouse,
Hanford, California 38

Yuba City Courthouse, Yuba City, California 40

U.S. Courthouse, Los Angeles, California (Design Competition) 42

Law Enforcement Facilities

Johnson County Sheriff's Criminalistics Laboratory, Olathe, Kansas 46

Toronto Police Service 14 Division, Toronto, Ontario 48

Index of Architects 52

JURY MEMBERS



JURY CHAIR

Jay Farbstein, PhD, FAIA
Jay Farbstein & Associates, Inc.
Pacific Palisades, CA

Mr. Farbstein is president of his firm and has more than 30 years of professional experience in justice facility planning, programming, and post-occupancy evaluation, with an emphasis on courts and corrections.

He has led projects for clients including the National Institute of Corrections and many federal, state, and local jurisdictions nationwide. He was lead author of *Correctional Facility Planning and Design* (Van Nostrand Reinhold, 1986) and has been invited to lecture about his work in Japan, Canada, Britain, France, and Germany.

Mr. Farbstein cochairs the AIA Academy of Architecture for Justice's research program. For the AAJ, he led a study of the application of neuroscience to the evaluation of correctional environments and recently served on a joint expert panel with Infocomm International to develop standards for audiovisual infrastructure in the courts. He also served as chair of the Environmental Design Research Association and received its lifetime career achievement award in 2008. He earned an MArch from Harvard University and a PhD from the University of London in environmental studies.



Duane B. Delaney
D.C. Superior Court
Washington, DC

Duane Delaney is the clerk of the court for the District of Columbia Superior Court. He has been employed by the D.C. Superior Court for over 30 years and has served as the appointed clerk of the court for 17 years. As clerk of the court he is responsible for all

operations in the Superior Court, a general jurisdiction urban court with more than 800 employees and 125 judges. Before his appointment as clerk of the court, Mr. Delaney served the court in numerous capacities, including deputy clerk of the court, director of the Civil Division, acting director of the Social Services Division (Probation Department), special assistant to the clerk of the court, probation officer, and pretrial services officer.

Mr. Delaney received his JD degree from Georgetown University Law Center in 1989 and an MS degree in judicial administration from American University in 1979. He graduated magna cum laude in 1977 with a BA degree from Howard University, where he was inducted into Phi Beta Kappa. He is a member of the D.C. Bar and the Bar of the U.S. Supreme Court. He currently serves on the board of directors of the National Association for Court Management (NACM) and is a board member of the Justice Management Institute. He previously served as NACM's representative on the National Center for State Courts Research Advisory Committee and has chaired NACM's Award of Merit Subcommittee since 2007.



Thomas G. Donaghy, AIA, LEED® AP
KGD
Arlington, VA

Thomas Donaghy is the architecture director for KGD Architecture. His diverse experience ranges from master planning large mixed-use urban projects to designing commercial, hospitality, education, and justice facilities. All of his projects emphasize their contextual

environment and the connections between human experience and sustainable practices. His design of the Maryland District Court of Rockville received a 2012 citation from the Academy of Architecture for Justice.

Mr. Donaghy received his BArch from the University of Arizona. He is a member of the Education Committee of the Virginia chapter of NAIOP, a commercial real estate development association, and he presented his work at the AIA/AAJ national conference in 2011.



Thomas N. Faust
D.C. Department of Corrections
Washington, DC

Thomas Faust is a public safety professional with more than 34 years of experience in the field of criminal justice. He currently serves as director of the D.C. Department of Corrections, one of the largest local detention systems in the nation.

From 1977 to 1990, Mr. Faust held several positions with the Arlington County (Virginia) Sheriff's Office, including deputy sheriff, director of administration, and chief deputy. In 1990 he was elected to his first four-year term as sheriff of Arlington County, a position he held for three consecutive terms. He later served as chief operating officer of the National Sheriffs' Association and, from 2007 to 2009, was vice president of Aramark Correctional Services, where he developed corporate marketing, outreach, and quality assurance strategies.

Mr. Faust received a BS degree from Virginia Tech and an MPA from George Mason University (GMU). He has served on the GMU Administration of Justice Advisory Board, the Northern Virginia Community College Criminal Justice Curriculum Advisory Board, and the National Institute of Corrections Large Jail Network. He is also a past president of the American Jail Association.



Maynard Feist, AIA
Lionakis
Sacramento, CA

Maynard Feist is the lead principal of Lionakis's criminal justice team. He joined the firm in 1988 when its only office was in Sacramento; the firm now has offices throughout California and Hawaii.

He has led the design, planning, and construction of adult and juvenile detention facilities in 19 California counties, and he helped the first counties in the state go through the SB81 funding process. When California implemented its requirements to create more positive and rehabilitative environments, Mr. Feist was at the forefront of this transformation in correctional facility planning and design.

With more than 31 years of experience, he is a recognized leader in the correctional market and is well versed in the latest legislation that affects correctional clients. Mr. Feist has been involved with the State Fire Marshal's I-3 Occupancy Codes Task Force and participated in the refinement of the Title 24 Minimum Standards for Juvenile Facilities with the Board of Community Corrections for reporting recommendations that will be included in the 2013 California Building Code.

Mr. Feist, originally from North Dakota, takes a pragmatic and sensible approach to problem solving. His expertise and practical knowledge of construction compliment his deep understanding of correctional facility architecture.

JURY MEMBERS **CONTINUED**



James Lewis McClaren, AIA
McClaren, Wilson & Lawrie, Inc.
Phoenix, AZ

Mr. McClaren is a senior principal and cofounder of his firm. His legacy includes completed architecture in service to law enforcement and the forensic sciences in 40 states and two Canadian provinces. Currently he is working on the new Salt Lake City Police/Fire/EOC/911

headquarters, which features seismic dampening technology and is the first North American police headquarters to be a net-zero building and achieve LEED® Platinum status. He recently completed the police master plan for the Los Angeles World Airports and is collaborating on the modernization efforts of the LAPD's historic academy in Elysian Park.

Recruited 28 years ago by the International Association of Chiefs of Police, Mr. McClaren has presented the IACP program, "Planning, Design, and Construction of Police Facilities," to more than 2,700 police executives and design professionals, representing 1,365 police agencies worldwide.

JURY COMMENTS THE VIEW FROM THE CHAIR

The jury members agreed that we were seeking projects that are outstanding on multiple levels—programmatic, operational, environmental, and aesthetic, as well as from the perspective of cost and construction. We were especially impressed with innovative solutions to challenging problems related to site, context, program, or construction. And we were very pleased to have found four such projects we could celebrate by awarding citations, as well as a substantial number of other projects that offered valuable contributions and warranted publication.

Two correctional projects that received citations were outstandingly innovative in their response to rehabilitative and reintegrative programming. The two projects—one an Inuit village in the Arctic and the other a women’s correctional facility in California—represented vastly different cultural contexts. In both cases, the client drove the programmatic innovations, and the design teams rose to the occasion, proposing environments that clearly supported and expressed the programmatic and operational goals.

The court projects that received citations also rose to the level of excellence. The response to context and locale in the Waterloo courthouse permeated the layout, the shape of the public spaces, and the materiality. In the Arnason Justice Center project, we found excellence at every level, from planning, detailing, and material selections to overall quality and attractiveness. We were impressed with the efforts to introduce natural light into the courtrooms. And more than one juror commented that “this looks like a facility that everyone would enjoy working in.”

We inferred that the mix of projects submitted most likely reflected economic conditions; places and facility types that were (at least in the last couple of years) relatively well funded were better represented. Thus, we saw far more courts than other types of projects and more from California, Texas, the U.S. federal

government, and Canada. Submissions included some adult correctional facilities and law enforcement facilities, but, for some reason, not a single juvenile detention or correctional facility was submitted.

Historically accurate courthouse projects—restorations and, even more important, new construction—needed to demonstrate to the jury that they brought some level of innovation and excellence to the court planning and environmental aspects of the project, but none that were submitted met this criterion. Although some projects claimed to reinterpret traditional court design elements in a contemporary vocabulary, only a few succeeded—and we insisted that the design reflect the lofty ideals sometimes expressed in the accompanying rhetoric.

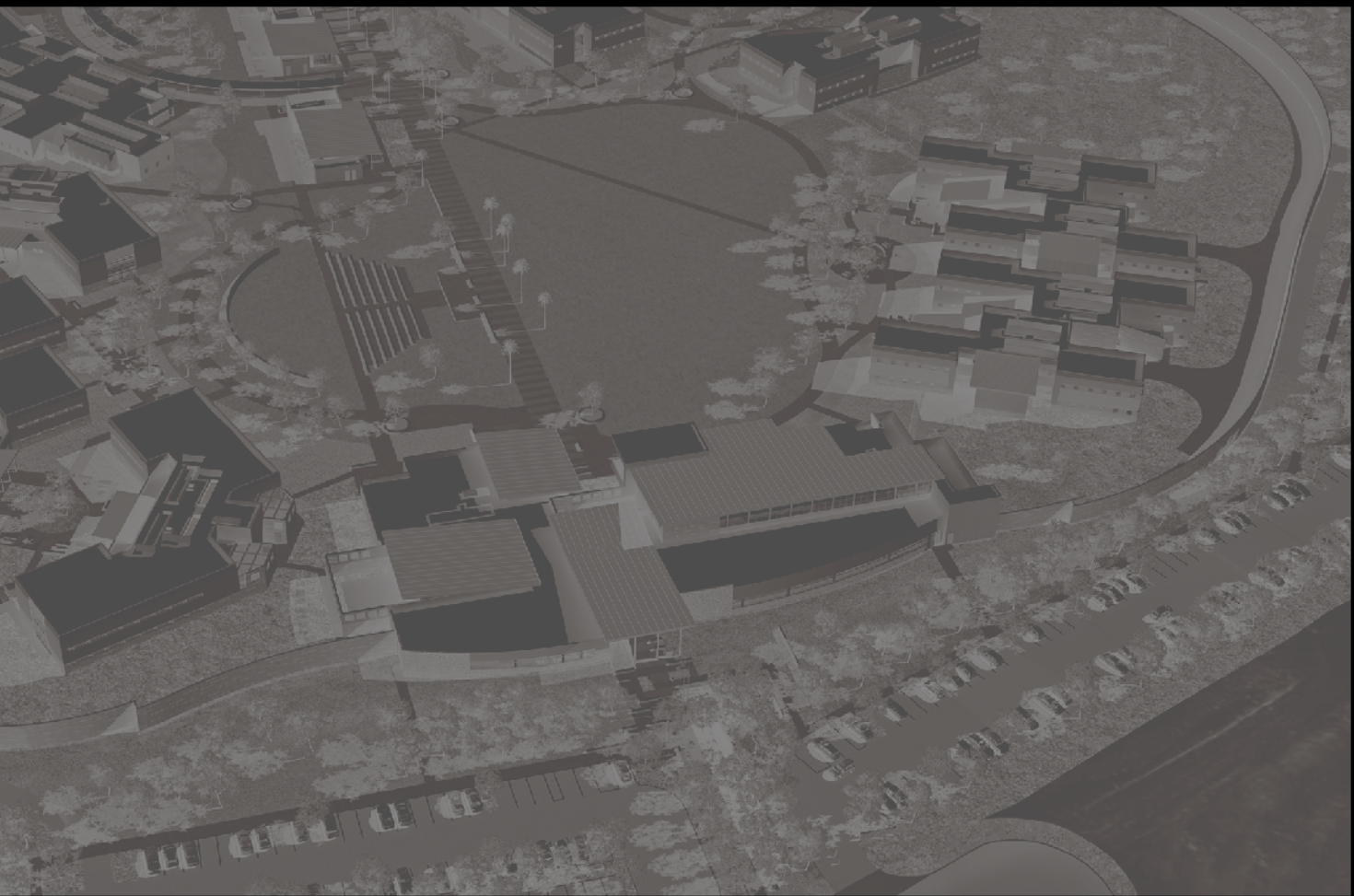
The jury was pleased to note that high levels of performance in energy efficiency and environmental quality have become the norm for submissions. LEED® Silver seems to be the entry level for these public sector projects.

One area of general disappointment was in the Thought Leadership category. Few projects that were properly studied bothered to apply in this category, and the ones that did, while competent, did not rise to the level of innovation or excellence. Quite a number of design projects were simultaneously identified as thought leaders, but only a few demonstrated convincingly that they were.

Finally, for projects that represent innovative contributions to program and design, the jury strongly recommends that post-occupancy evaluations be conducted to validate the aspects that work—and those that may not work as well—so that firms working in this field can move toward a more evidence-based design.

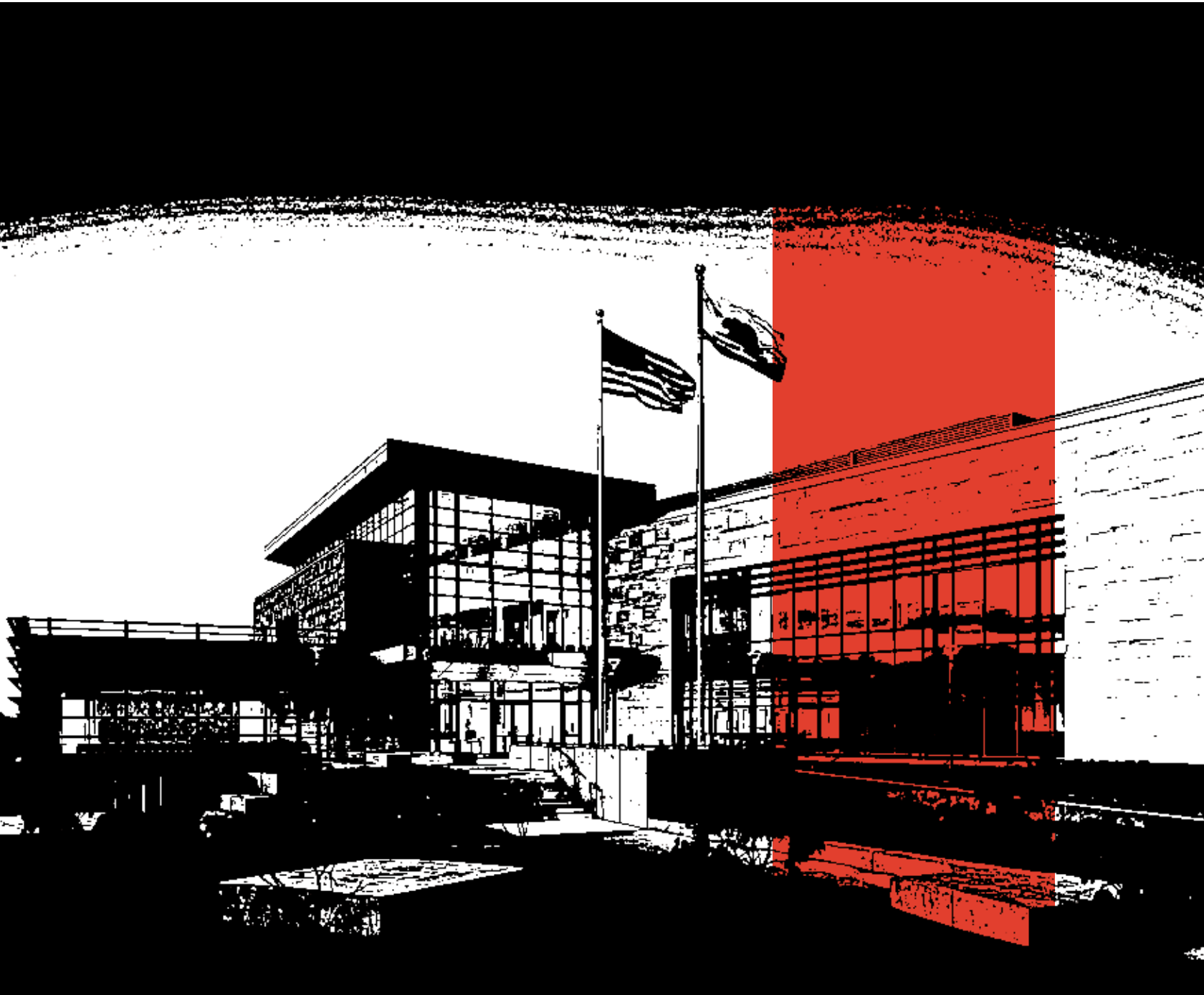
Jay Farbstein, PhD, FAIA

2013 Justice Facilities Review Jury Chair





CITATIONS



RANKIN INLET HEALING FACILITY

[CORRECTIONAL]

JURY'S STATEMENT

More than one culturally specific project was submitted, but this one excelled in expressing local culture architecturally and responding innovatively to challenging climatic conditions in a remote area. The jury was impressed with every aspect of this project, starting with a progressive and ambitious program of healing, tied to the Inuit concept that an offender has fallen out of balance with his or her community and that the task of the justice system is to correct that balance and reconnect the offender with both the natural order and society and culture. We were amazed that part of the program entailed supervised hunting (yes, with guns!) as part of the transition process.

All aspects of the design contribute to the overarching goals of renewal and reintegration and of keeping cultural values alive. The form (using curves found in traditional structures),

selection of materials (including natural materials such as wood), and bright colors were all considered highly appropriate.

This was also a challenging project to construct, and the design overcomes the challenges. Located on the permafrost, the building had to be raised up and built of components that could be shipped in and assembled and could resist the terribly harsh climate.

The jury believes a post-occupancy evaluation after a year or two of operation would be valuable, including a follow-up to measure the impact on recidivism and reintegration.





ARCHITECT'S STATEMENT

The Rankin Inlet Healing Facility is a 48-bed correctional center for men, located in the Canadian Arctic, on the shores of Hudson Bay in Nunavut Territory. The majority of Nunavut's population of 30,000 are Inuit. The rapid assimilation of Western culture has caused dislocations within the traditional culture, resulting in elevated incarceration and recidivism rates. The government of Nunavut is committed to a system of community-based justice that encourages communities to take greater responsibility for offenders and victims. The facility, operating under direct supervision, comprises two housing units: a 32-bed medium security unit and a 16-bed minimum security unit for inmates who participate in community-based programs.

The facility promotes healing and rehabilitation through inmate interaction with staff, the outdoors, and the community. The building's curvilinear form, based on an understanding of Inuit culture and tradition, is designed to facilitate the healing process

as well as demystify negative community stereotypes associated with correctional facilities. The curvilinear forms also respond to traditional building elements such as whalebone, sod, stone, snow, and ice. The exterior is composed of wood, metal panels, and glazing, with colorful details inspired by Arctic vegetation. Sitting on steel piles, the building hovers over the permafrost ground and engages the natural contours of the site. The facility consists of a series of stepped shedlike structures. The roof, exterior walls, and floor soffit details are designed to suit the harsh northern climate.

On the interior, natural materials such as stone and wood are used in communal areas, including the chapel, gymnasium, and dayrooms. Natural light, an important feature in the north, floods the facility, especially during summer months. In addition, the building includes sophisticated integrated electronic security and building automation systems.

OWNER

Department of Justice, Government of Nunavut

DATA

Type of Facility

Correctional

Type of Construction

New

Site Area

34,500 SF

Acres

3.64

Area of Building

New/Renovated/Total GSF

31,540/NA/31,540

New/Renovated/Total NAA

20,340/NA/20,340

Construction Costs

Actual

Site development costs: \$577,000

Building costs: \$29,263,900

Total construction costs: \$29,840,900

Building cost/GSF: \$928

Project Delivery Type

Design-bid-build

Funding

General funds

Status of Project

Completed 2012

Capacity

Number of beds: 48

Type of beds: medium/minimum security

Number of cells: 24





CREDITS

Architect

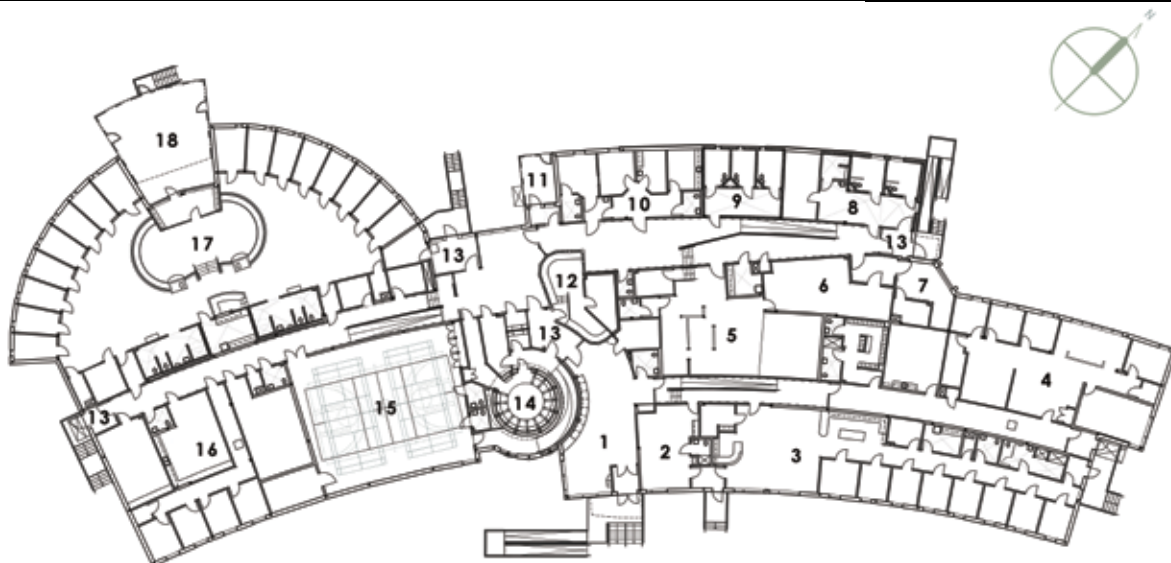
Parkin Architects Limited
Toronto, Ontario

Civil/Structural/Mechanical/ Electrical Engineer

Accutech Engineering Inc.

Photographer

Gerry Kopelow Photographics, Inc.



legend

- | | |
|-----------------------------------|-----------------------------------|
| 1 - Entrance Lobby | 10 - Health Unit |
| 2 - Elder's Apartment | 11 - Secure Yard |
| 3 - Minimum Security Housing Unit | 12 - Central Control |
| 4 - Staff Offices & Support | 13 - Sally Port |
| 5 - Kitchens | 14 - Chapel |
| 6 - Storage | 15 - Gymnasium |
| 7 - Loading Dock | 16 - Program Area |
| 8 - Admissions & Discharge | 17 - Medium Security Housing Unit |
| 9 - Segregation Unit | 18 - Secure Yard for Housing Unit |

floor plan



“All aspects of the design contribute to the overarching goals of renewal and reintegration...”

RICHARD E. ARNASON JUSTICE CENTER

[COURT]

JURY'S STATEMENT

This jury's initial response was to exclaim that this "looks like a facility that everyone would enjoy working in," and, on examination, it became clear that it was exemplary in every way—from site planning to the layout of spaces and choice of materials.

The building's layout is marked by a clear progression of spaces. Jury assembly is located to one side of the entry so that the building can be accessed for public events when the courthouse is closed. The jury particularly praised the building's warmth, sense of openness, and use of natural light throughout, including skylights and high windows in the courtrooms.

The high quality materials are durable and appropriate and convey a strong sense of dignity and civic character. This is a building the community will be able to cherish for years to come. The only concern was about cost—it may or may not be an expensive building (the budget was withheld at the request of the owner); however, the jury felt that it is appropriate to achieve this level of quality and durability in important civic buildings.





ARCHITECT'S STATEMENT

The justice center is the first funded full-service courthouse constructed under California's new Trial Court Facilities Standards. The building's limestone façade and transparent entry lobby, jury assembly pavilion, and open galleries inspire a sense of dignified stateliness combined with natural beauty and friendly openness. The client's goal was to provide a contemporary yet enduring civic edifice appropriate to a satellite suburban courthouse, achieved in a three-level, 73,500-square-foot building with traffic, family, juvenile, criminal trial, and arraignment courtrooms.

Inside, the environment evokes a sense of calm. The design was inspired by the site's adjacent rolling foothills and surrounding river delta, with simple, natural materials—limestone, terrazzo, redwood veneers from salvaged logs, Trespa, and glass—selected for longevity, ease of maintenance, and sustainability. The artwork at the main entry echoes the shadows and colors of the nearby hills and mountains, casting soft, waterlike shadows into the second-story hallway.

The circulation is easy and clear for the public and efficient for staff. Currently housing seven courts, the building is designed for future expansion to 10. All courtrooms feature advanced courtroom technology. The jury assembly, traffic court, and entry lobby are designed to be isolated from the rest of the facility for after-hours night court or community use without compromising the overall building security.

The entry plaza recalls the "courthouse square" of the past; decomposed granite steps and ramps lead up to the elevated entry. The site is landscaped with native and drought-resistant plants and trees. A network of bioswales provides the required security standoff and minimizes storm water runoff. A green roof over the jury pavilion adds life and natural beauty, reduces energy loads, and slows storm water runoff. The project will receive LEED® Silver certification.

**“This is a building the community
will be able to cherish
for years to come.”**

OWNER

Judicial Council of California,
Administrative Office of the Courts

DATA

Type of Facility

Court

Type of Construction

New

Site Area

180,774 SF

Acres

4.15

Area of Building

New/Renovated/Total GSF
73,500/NA/73,500

New/Renovated/Total NAA
56,541/NA/56,541

Construction Costs

Actual

Site development costs: NA

Building costs: NA

Total construction costs: NA

Building cost/GSF: NA

Project Delivery Type

CM at risk

Funding

State Court Facilities Construction Fund

Status of Project

Completed 2010

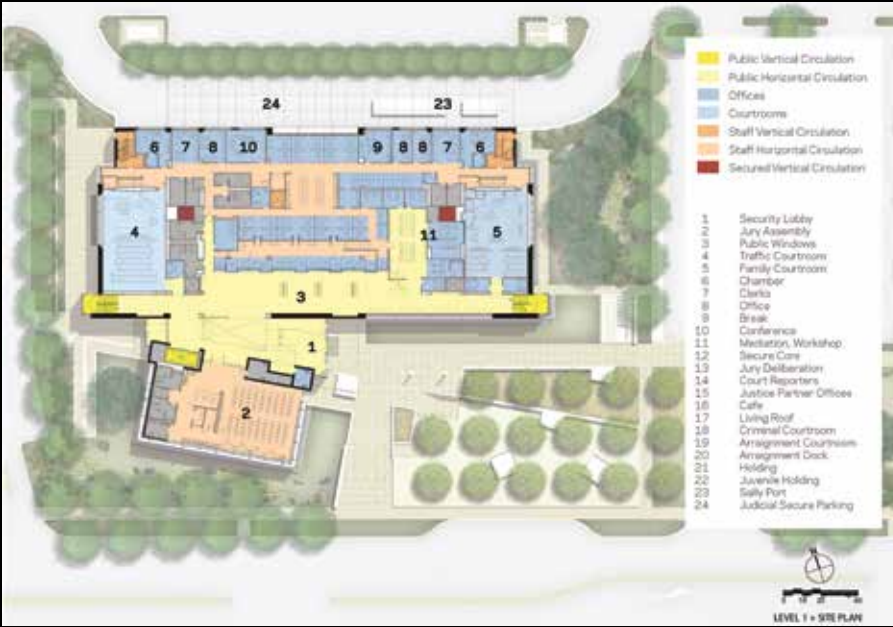
Capacity

Service population: 300,000–350,000

Number of courts: 7

Type of courts: criminal/high security, juvenile,
traffic, arraignment





CREDITS

Architect

HOK
San Francisco

Civil Engineer

BKF Engineers

Mechanical/Electrical/Plumbing Engineer

HOK

Structural Engineer

Louie International

Landscape Architect

HOK

Lighting Designer

Horton Lees Brogden Lighting

Acoustics/Audiovisual

Smith, Fause McDonald Inc.

Court Planner/Interior Design/Rendering

HOK

Blast Consultant

Hinman Consulting Engineers Inc.

Energy Consultant

Architectural Energy Corporation

Signage and Graphics

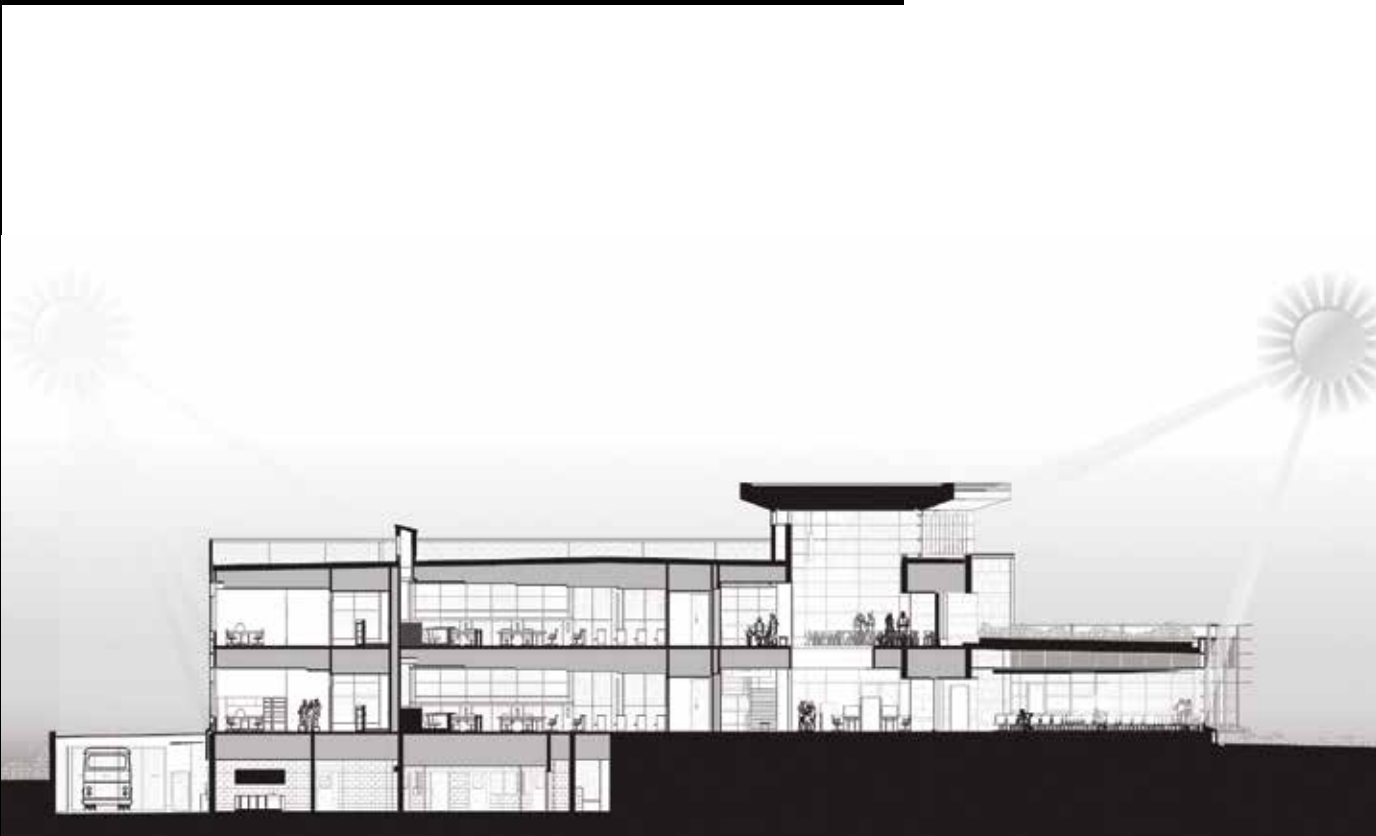
Square Peg Design

Contractor

Sundt Construction Inc.

Photographer

David Wakely Photography



SAN DIEGO COUNTY WOMEN'S DETENTION FACILITY

[DETENTION]

JURY'S STATEMENT

This project is exemplary in incorporating not only evidence-based programs but also evidence-based design to support those programs. A growing body of research supports the notion that an environment that provides natural light, views of nature, and opportunities for positive interaction and communication can reduce stress and encourage rehabilitation. This jail provides a college campus-type atmosphere with programs that will promote changes in behavior through rewards geared toward women and will prepare them for re-entry into society. Through all these gestures, the project takes the concept of a normalized environment to the next level, setting up clear behavioral expectations for "normal" behavior (and provides some hard, more traditional housing units for those who do not respond to the program).

Among the features the jury appreciated are the open dorms that also provide a degree of privacy consistent with security (research shows that this encourages positive communications). The jury also liked

the campus, which provides numerous outdoor spaces for inmate and staff activities; landscaping is carefully designed to provide these places while not blocking views needed for supervision.

This project was one of the few that clearly incorporates thought leadership and warrants recognition in that category. The jury remarked, however, that many of these ideas have been available (perhaps without as much research to substantiate them) for 25 years (e.g., in California's Contra Costa County jails and some others), and they have not been taken up generally. In a certain sense, this project should be the norm, not the leading edge. Once constructed and occupied, this project also warrants a post-occupancy evaluation to contribute the next increment to evidence-based design.





ARCHITECT'S STATEMENT

Over a 10-year planning process, San Diego County developed an innovative approach to the care and custody of women that has the potential to establish a national adult incarceration model based on normative operations and facility design. The San Diego County Women's Detention Facility (SDCWDF) comprises 1,216 beds on a 45-acre campus modeled on a community college; its program-intensive management culture is intended to proactively reduce recidivism. This distinctly transformative philosophy inspired the design team to explore principles of choice, change, and accountability in the development of an environment that would

support rehabilitative opportunities and the safety and security of staff and inmates. The public face of the facility, the Administration/Visitation building, features a residentially scaled, richly landscaped campus responsive to the community context of a good neighbor.

The design is based on what are known to be predictable psychological and physiological responses people have to their environment. The site and building architecture support a culture of expectations: appropriate and respectful behavior; positive change through hard work and responsibility; respectful interaction with other inmates and staff; personal growth from programs; and, ultimately, successful transition back into the community as a productive citizen. A safe and secure environment that seamlessly supports staff will, in turn, reinforce effective interaction with inmates. Studies show that women socialize differently from men; multicustody living environments are clustered around exterior courtyards that integrally connect the interior to the exterior spaces to create intimate or group interaction. The program buildings are located in the heart of the "campus core," which will buzz with activity during the day and evenings.

The project is targeting LEED® Gold certification. The SDCWDF will be constructed in two phases in order to maintain operation of the existing facility; the first phase of the complex is being built on the adjacent, connected site.

OWNER

County of San Diego

DATA

Type of Facility

Detention

Type of Construction

New

Site Area

1,960,200 SF

Acres

45

Area of Building

New/Renovated/Total GSF
461,620/NA/461,620

New/Renovated/Total NAA

292,274/NA/292,274

Construction Costs

Estimated

Site development costs: \$26,000,000

Building costs: \$164,000,000

Total construction costs: \$190,000,000

Building cost/GSF: \$355

Project Delivery Type

Design-build; best-value GMP

Funding

Public bond issue, general funds

Status of Project

Under construction

Estimated completion 2015

Capacity

Number of beds: 1,216

Type of beds: detention

Number of cells: 544



“ ... an environment that provides natural light, views of nature, and opportunities for positive interaction and communication can reduce stress and encourage rehabilitation. ”





CREDITS

Architect/Architect of Record

KMD Architects
San Francisco

Associate Architect

HMC Architects
San Diego

Construction Manager

Vanir Construction Management

Program Manager

Carter Goble Lee

Design-Build Contractor

Balfour Beatty Construction

Structural Engineer

DCI Engineers

Mechanical/Electrical/Plumbing Engineer

Glumac

Civil Engineer

Bureau Veritas

Geotechnical Engineer

Leighton Group

Landscape Architect

LandLAB

Sustainability Specialist

HMC Architects

Security Electronics

HK Electrical Engineers

Acoustical Consultant

Newson Brown Acoustics

Code Consultant

RJA

Mechanical and Plumbing

California Comfort Systems

Electrical

Helix Electric

Food Service and Laundry

R.W. Smith & Company

Detention Equipment

Southern Folger

Graphics

HMC Architects/KMD Architects (renderings)

WATERLOO REGION COURTHOUSE

[COURT]

JURY'S STATEMENT

The jury appreciated many aspects of this project, but what distinguished it most clearly was its very effective incorporation of unique features of the region into the design of its public spaces. The presentation showed the imagery of the river's dramatic turns and sweeps through its stone bed, and then echoed this pattern in the atrium and walkways. Too often, references to "contextual" design do not actually deliver, but this project does—and it adds layers of meaning about a sense of place, as well as way-finding cues for visitors.

The jury liked the way the design transitioned from the more fluid exterior and public circulation spaces to more formal, defined, and structured functional areas like offices and courtrooms, where, for example, the same stone was used but in a more regular geometry. One detail the jury particularly liked was the design of seating outside the family courtrooms; the seating was arrayed in small groups with screens to provide separation between incompatible visitors.





ARCHITECT'S STATEMENT

The Waterloo Region Courthouse is a competition-winning design that consolidates three regional Superior and Ontario Courts facilities into one integrated facility. It houses 30 courtrooms, two intake courtrooms, and six conference settlement rooms. The building is organized in two blocks, with the taller block housing the courts and the lower block housing court support spaces. These blocks are connected internally by a three-story sky-lit atrium.

The local Grand River is a source of inspiration for the design of the site landscape, the curvilinear composition of the atrium, and the horizontally striated material palette. This organic theme also addresses the desire for the character of the courthouse to evolve from one dominated by an architectural expression of power and stability to that of a more open, accessible institution.

The building responds to the immediate context through its scale and mass and through the design of the public realm around the building. While the court slab is in keeping with the scale of the taller buildings to the north and west, the lower-level podium elements create a street-related massing that forms the edges of a new public plaza. The required physical security barriers are concealed in an extensive linear landscape that surrounds the building, linking two previously isolated parks in a new upgraded public realm.

The interior design and character transition from an informal, naturally inspired public realm to a more rectilinear and restrained inner realm, representing the rule of law and the institution of justice. The complex is on target to achieve LEED® Silver and includes a number of energy-saving, resource-saving, and internal environment features.

OWNER

Province of Ontario

DATA

Type of Facility

Court

Type of Construction

New

Site Area

146,741 SF

Acres

3.37

Area of Building

New/Renovated/Total GSF
446,428/NA/446,428

New/Renovated/Total NAA
240,299/NA/240,299

Construction Costs

Estimated

Site development costs: \$7,000,000

Building costs: \$225,000,000

Total construction costs: \$232,000,000

Building cost/GSF: \$500

Project Delivery Type

P3, DBFM

Funding

Private financing lease back

Status of Project

Completed 2013

Capacity

Service population: 553,000

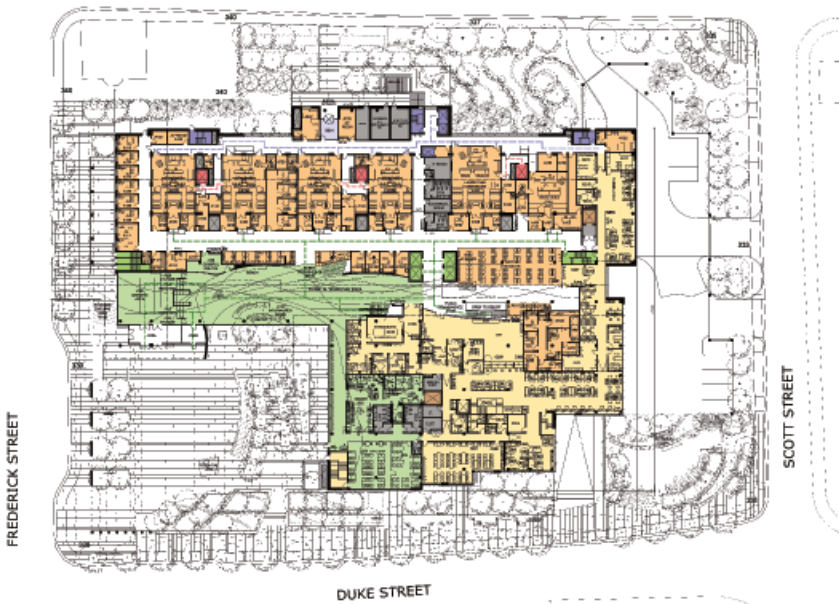
Number of courts: 30

Type of courts: criminal/high security, civil,
domestic, juvenile, hearings





WEBER STREET



- PRIVATE CIRCULATION
- PUBLIC CIRCULATION
- PRISONER CIRCULATION
- A - COURTROOMS
- B - JUDICIARY
- C - COURT SERVICES
- D - BRONKHORST HALL
- E - POLICE COURT SERVICES
- F - CROWN ATTORNEY
- G - VICTIM WITNESS ASSISTANCE
- H - COUNSEL SERVICES
- I - PUBLIC SERVICES
- K - BUILDING SERVICES
- L - PROGRAM PARKING
- M - MECHANICAL, ELECTRICAL, COMMUNICATIONS

CREDITS

Architect

NORR Limited Architects and Engineers
Toronto, Ontario

Structural Engineer

NORR Limited

Mechanical Engineer

Hidi Rae & Associates

Electrical Engineer

Mulvey & Banani International Inc.

Landscaping

Dillion Consulting

Courthouse Consultant

AECOM

LEED Consultant

Enermodal

Signage Consultant

Forge Media

Code Consultant

LRI

Audiovisual Consultant

Sight N Sound Design

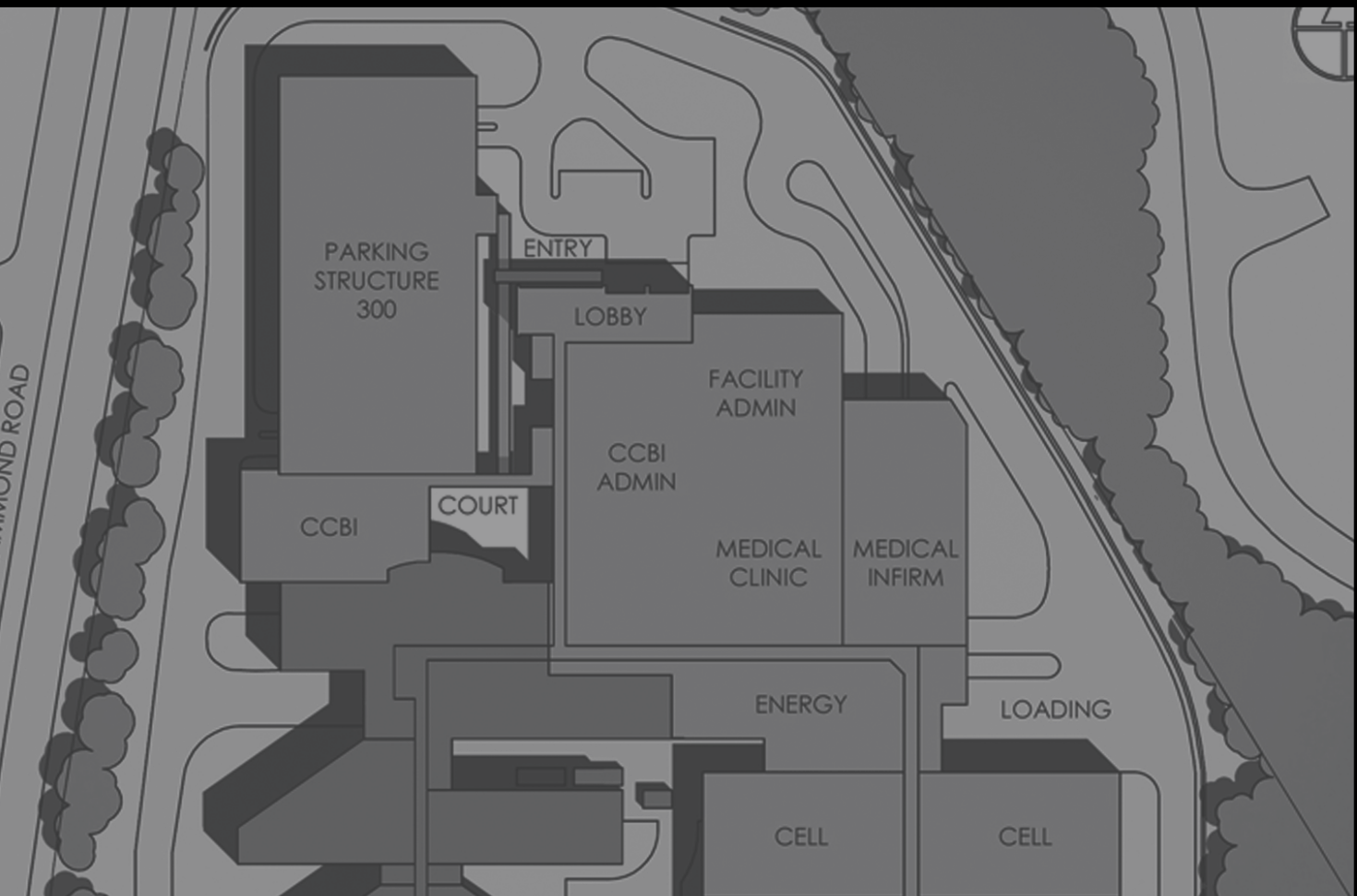
Acoustic Consultant

Swallow Acoustics

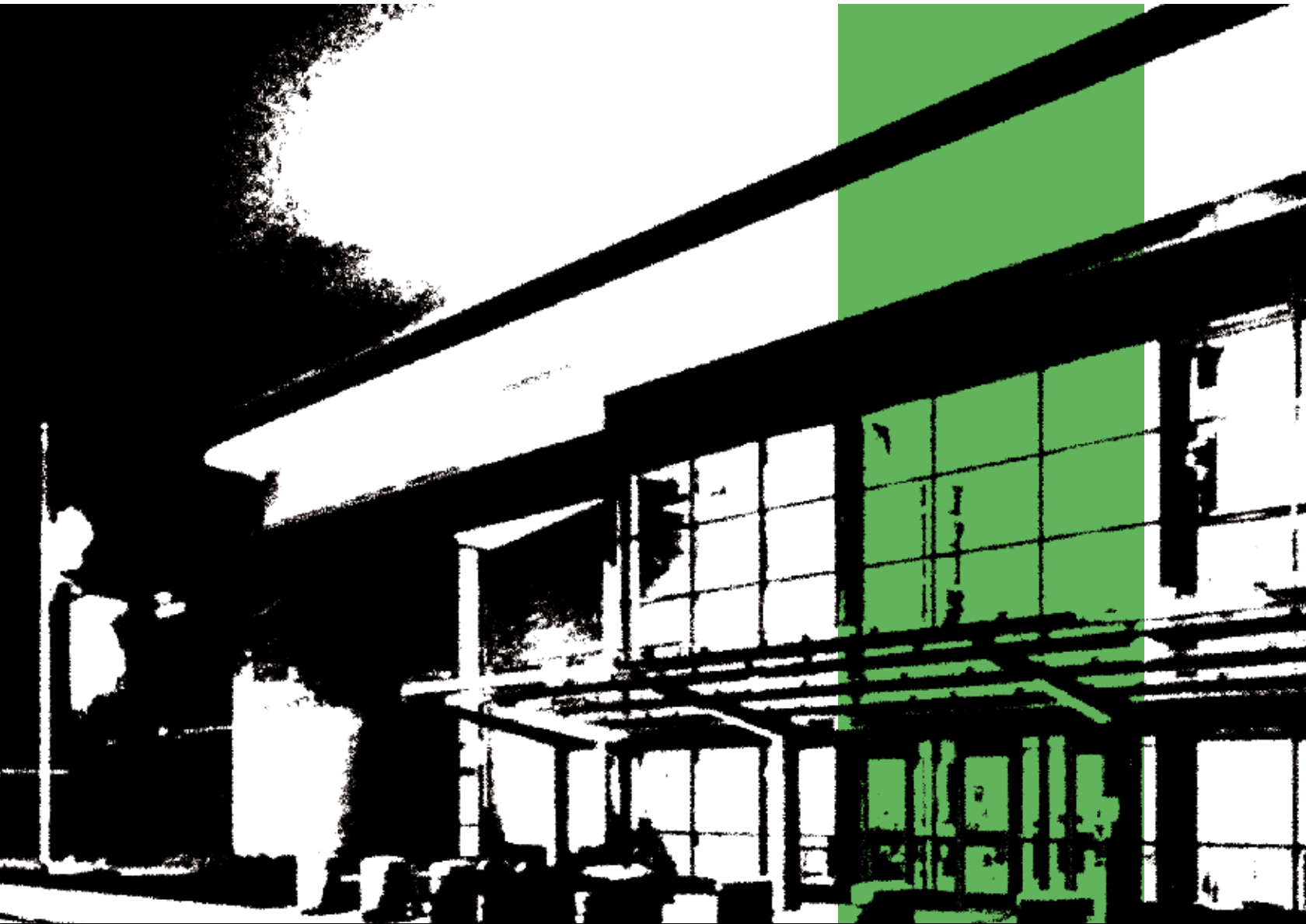
Photographer

Shai Gil

“ The local Grand River
is a source of inspiration for the design
of the site landscape...”



CORRECTIONAL AND DETENTION FACILITIES



NEW MODEL PRISON FOR MEXICO'S FEDERAL PENITENTIARY SYSTEM

ARCHITECT'S STATEMENT

The new model prison for Mexico's Penitentiary System is unique because it provides a solution not only for the design of new facilities but also for the renovation and reuse of existing facilities to meet the requirements of direct supervision operations. The space standards, security guidelines, and operational practices developed for this program enabled the facilities to meet the American Correctional Association's international standards for accreditation. The ACA has accredited all the existing facilities in which this program was applied, and many received 100% compliance ratings. The project has moved the Mexican Penitentiary System from substandard levels for minimal requirements of confinement and operations to an international example of reform as highlighted at the 2012 International Corrections and Prisons Association Conference. In addition, the project provides a map to advance the system from

approximately 4,000 beds to nearly 30,000 beds within five years. This increased capacity has allowed the country to take control of federal inmates from poorly operated state facilities.

The model prison is the basis for all future planning of not only the federal penitentiary system but also state prisons and prisons in other Latin American countries. The model was used to help create new laws for confinement in Mexico. The commitment to making extensive improvements in penitentiary operations by the former Secretaría de Seguridad Pública (SSP, Secretariat of Public Security) has established Mexico as the example for positive change. The new Secretaría de Gobernación (SEGOB, Ministry of Interior) has set even higher goals for creating one of the most progressive penitentiary systems in the world and continuing the model program with an additional 50,000 beds planned during the next administration.





OWNER

Mexico Federal Secretary of Public Security

DATA

Type of Facility

Detention

Type of Construction

New, addition, renovation

Site Area

130,283,604 SF

Acres

2990.9

Area of Building

New/Renovated/Total GSF
1,133,848/2,267,696/3,401,544

New/Renovated/Total NAA

NA/NA/NA

Construction Costs

Estimated

Site development costs: NA

Building costs: NA

Total construction costs: NA

Building cost/GSF: NA

Project Delivery Type

Multiple delivery method

Funding

General funds, federal government

Status of Project

Under construction 2013

Capacity

Number of beds: 6,420

Type of beds: supmaximum/minimum security

Number of cells: 3,274

CREDITS

Architect

CGL Companies

Miami

Photographer

Secretaría de Seguridad Pública/Secretaría de
Gobernación/CGL Companies

WAKE COUNTY DETENTION CENTER, PHASE 2 EXPANSION

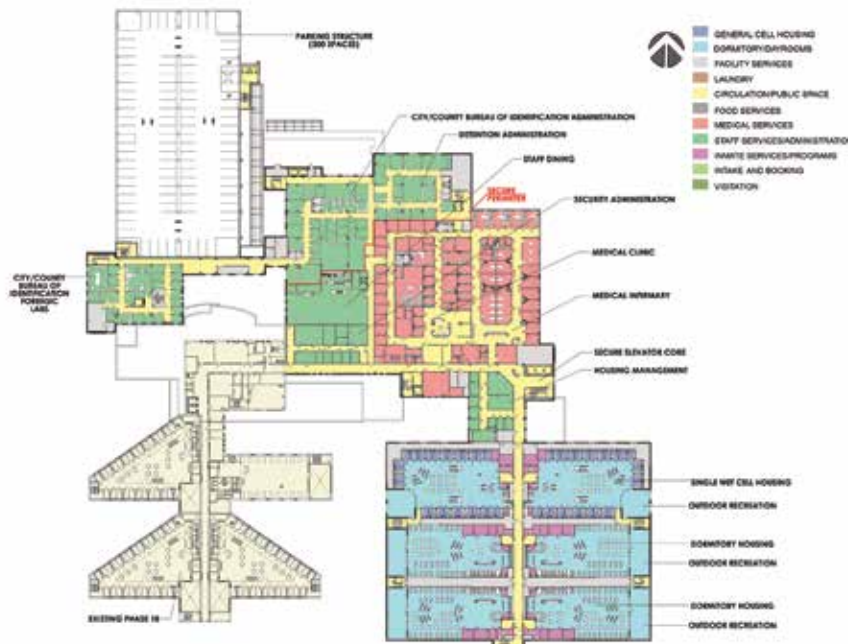
ARCHITECT'S STATEMENT

Wake County is growing at a rate of over 30,000 new residents per year. The phase 2 expansion is an addition to the existing phase 1B (housing only) to address the county's continued population growth, space shortages, integration of Immigration and Customs Enforcement, and consolidation of services for efficiency and control. The new 420,521-square-foot detention facility consolidates detention services/activities that previously were located in three separate facilities. Some of those consolidated services include booking and open intake, City/County Bureau of Identification, medical clinic and infirmary, academic services, food service, laundry, and warehouse. The new booking and open intake program includes identification, magistrates, inmate property storage, and transfer. The facility houses 672 new inmate

beds, 224 single wet cells, and 448 beds in dormitories (56-bed dorms). At the same time, the county is maintaining the initiative of remaining even with, or slightly ahead of, demand for bed spaces.

The project has been well received by the citizens of Wake County as innovative, responsible, and forward thinking. The design communicates a safe and secure environment for the public, justice personnel, and the incarcerated, advancing the mission of the criminal justice system. The design concentrated on enhancing staff retention, efficiency, and morale, while streamlining training for new employees. The end result is a facility that is physically maintainable, functional, durable, sustainable, and operational day to day and through periods of natural disasters.





OWNER

County of Wake, North Carolina

DATA

Type of Facility

Detention, law enforcement

Type of Construction

New, renovation

Site Area

861,181 SF

Acres

19.77

Area of Building

New/Renovated/Total GSF
 414,599/5,922/420,521

New/Renovated/Total NAA
 273,376/4,652/278,028

Construction Costs

Actual
 Site development costs: \$4,012,751
 Building costs: \$124,232,284
 Total construction costs: \$128,245,035
 Building cost/GSF: \$295.42

Project Delivery Type

Construction management

Funding

General funds

Status of Project

Completed 2012

Capacity

Number of beds: 672
 Number of cells: 224
 Service population: 952,000
 Staff population: 62 (sworn, 27; nonsworn, 35)
 Forensics lab: 28,904 SF

CREDITS

Architect/Prime Architect of Record

Little Diversified Architectural Consulting
 Durham, NC

Associate Architect

HDR Architecture
 Dallas and Chicago

Programming

Carter Goble Lee Management Services

Interior Design

Little Diversified Architectural Consulting

Code Consultant

Rolf Jensen + Associates Inc.

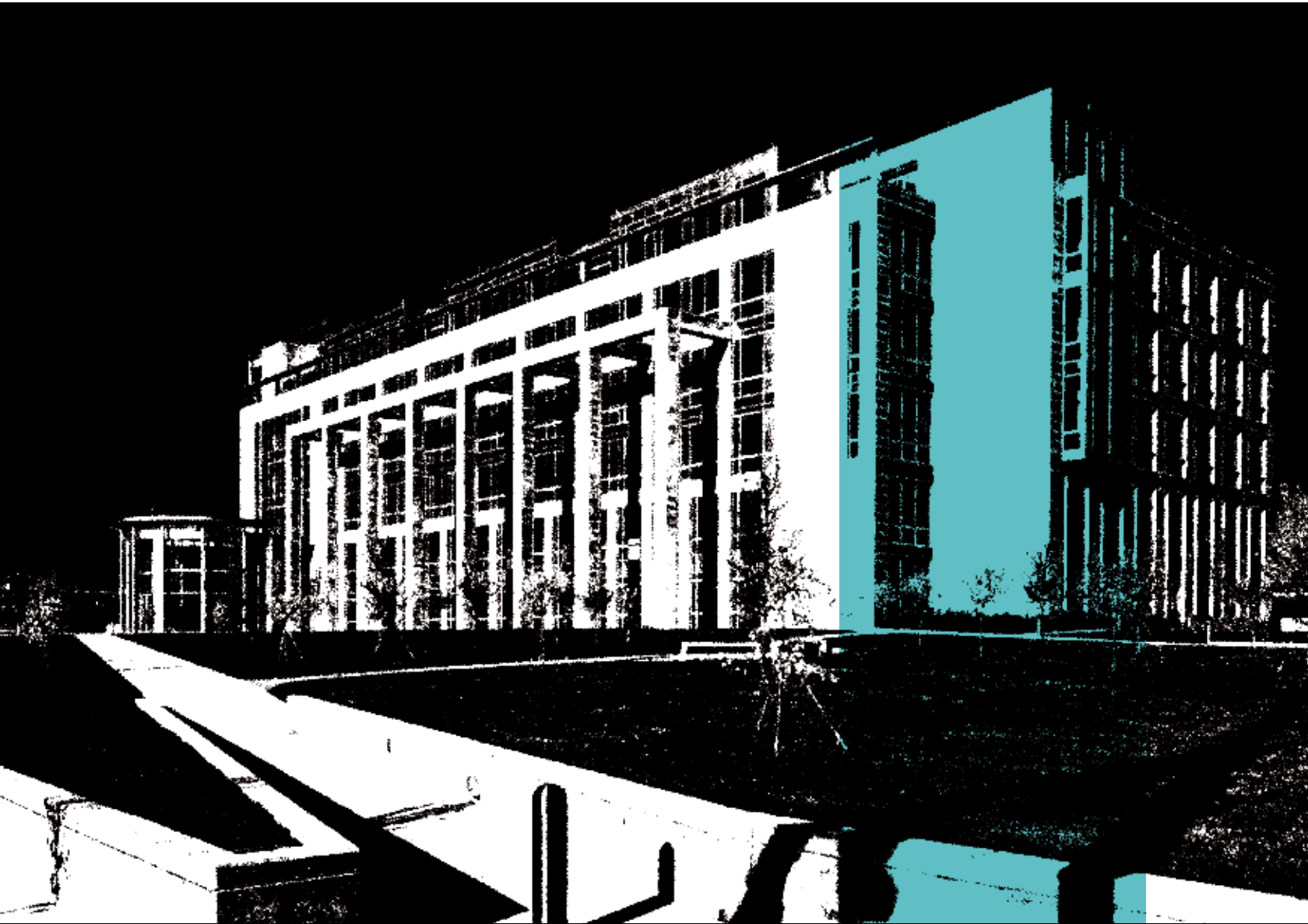
Civil/Landscape

Kimley-Horn and Associates Inc.

continued on page 50



COURT FACILITIES



CHATHAM COUNTY TRIAL COURTHOUSE

ARCHITECT'S STATEMENT

The design of the new trial courthouse respects Savannah's historic Oglethorpe plan, which is organized by a series of streets, squares, and lanes. The courthouse complex, which includes the existing courthouse, vacant jail, and a parking garage, occupies what was originally three separate city blocks. In the course of developing the existing courts complex, these streets and lanes were terminated at Montgomery Street, resulting in an oversized city block that violated the historic fabric of the city. The concept for the new courthouse was to reinstate, to the greatest extent possible, the original historic fabric of the city and to have the courthouse itself respond directly to the parameters of Oglethorpe's plan.

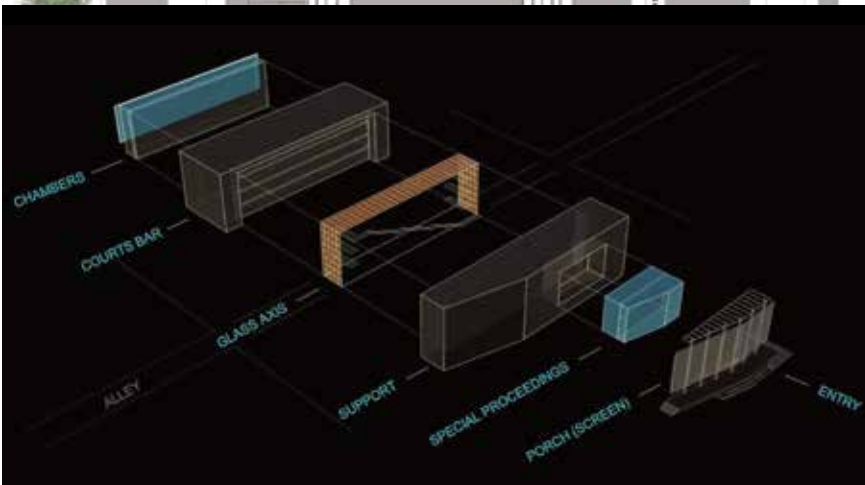
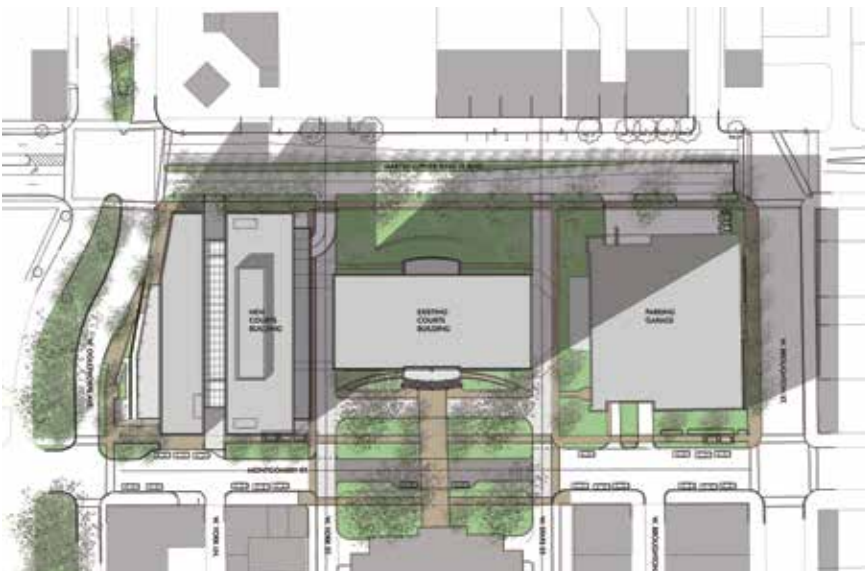
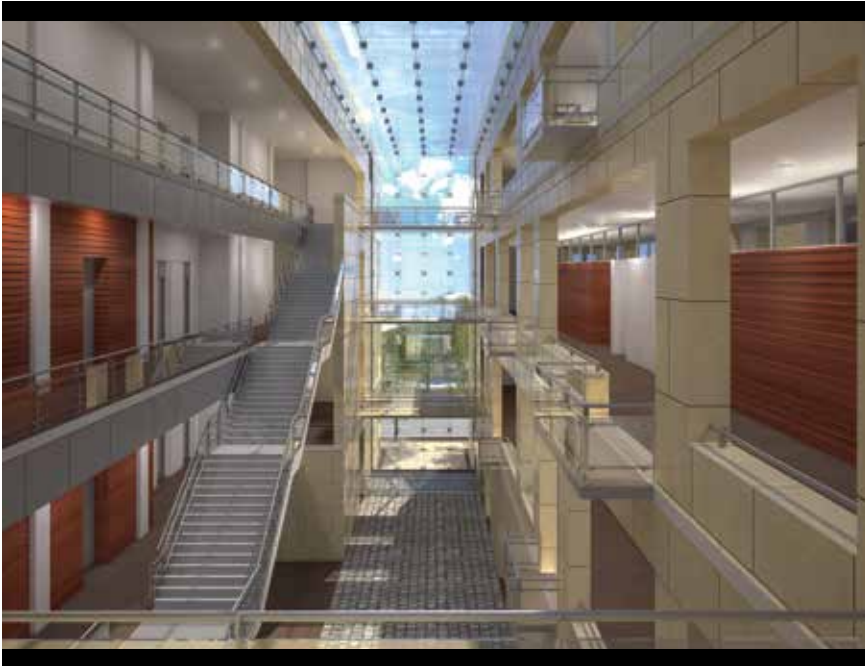
Consistent with Oglethorpe's plan, York and State streets have been reestablished on the courts campus as "streets," re-creating three distinct city blocks aligning with the original street grid. The new trial courthouse further reinforces the city plan through its massing and design. In Oglethorpe's plan, each city block is bifurcated by a lane that results in a consistent negative space in the center of the city's blocks. The new trial court building uses the urban negative space implied by York Lane to organize the courthouse into two distinctive volumes, each with four levels, around a central atrium that aligns directly with York Lane. This allows the courthouse to deploy the large building program on the site while respecting both the city plan and the existing scale and massing of the surrounding structures.

The façade of the atrium is fully glazed to strongly reinforce the concept of the negative space of the lane running through the courthouse. Each of the flanking volumes on either side of the atrium is skinned with limestone and punched openings, detailed to emphasize the vertical dimension. The exterior treatment of the two volumes of the courthouse is reflected in the interior facades, which further strengthen the massing concept defined by the negative space of York Lane.



FIRST FLOOR PLAN





OWNER

Chatham County, Georgia

DATA

Type of Facility

Court

Type of Construction

New

Site Area

157,682 SF

Acres

3.27

Area of Building

New/Renovated/Total GSF
165,000/NA/165,000

New/Renovated/Total NAA
141,887/NA/141,887

Construction Costs

Estimated

Site development costs: \$4,100,000

Building costs: \$55,900,000

Total construction costs: \$60,000,000

Building cost/GSF: \$364

Project Delivery Type

Design-bid-build

Funding

Public bond issue

Status of Project

Estimated completion 2015

Capacity

Number of courts: 13

Type of courts: criminal/high security, civil

CREDITS

Design Architect/Architect of Record

Dewberry Architects Inc.
Fairfax, VA

Associate Architect

Barnard Architects
Savannah

Structural Engineer

Wm. Hunter Saussy III PC

Mechanical/Electrical/Plumbing/Fire Protection Engineer

S.L. King

Civil Engineer

Thomas and Hutton

Geotechnical Engineer

Terracon

Landscape Architect

Smith and VandenBulck Inc.

continued on page 50

FRANKLIN COUNTY COMMON PLEAS COURTHOUSE

ARCHITECT'S STATEMENT

The Franklin County Commissioners challenged the design team to create a landmark building for the common pleas court; the program included 20 trial courtrooms, 10 magistrate courtrooms, arraignment and ceremonial courtrooms, judges' chambers, and "settlement suites," used for the resolution of cases without tying up courtrooms, a critical necessity for judges managing 15,000 cases a year.

The visual expression captures all elements of a traditional courthouse and translates them into a design statement for today and tomorrow. The building's simple form is a direct reflection of the program of uses within. The ample glass wall systems enable users to visually understand the building and how they move through it. The courtrooms are arranged along a main corridor in a manner clearly apparent from outside. The elevator core, located on the

exterior, recalls the traditional courthouse clock tower and provides east-west views from the elevator cabs. The horizontal orientation is sympathetic to adjacent historic buildings.

The glass façade acts as a finely tuned, breathable membrane that increases efficiency and sustainability and contributes to the building's LEED® Gold certification, the first courthouse in Ohio. Glazed curtain wall systems with optimized louvers and screens provide sun shading to minimize solar gain, maximize views, and allow daylight to enter. Folding surfaces and planes set up a priority of scale at the street level and then continue on to contain the courtroom levels. High ceilings and an east-west orientation allow maximum light into courtrooms. The public areas are designed to reflect the dignified nature of the courts with durable and easily maintained materials. The project includes a civic plaza, a green lobby canopy, and outdoor public spaces.





OWNER

Franklin County Commissioners

DATA

Type of Facility

Court

Type of Construction

New

Site area

167,053 SF

Acres

3.8

Area of Building

New/Renovated/Total GSF
324,579/NA/324,579

New/Renovated/Total NAA
211,153/NA/211,153

Construction Costs

Actual

Site development costs: \$6,554,626

Building costs: \$85,977,420

Total construction costs: \$92,532,050

Building cost/ GSF: \$265

Project Delivery Type

Multiple prime contract, construction management

Funding

Public bond issue

Status of Project

Completed 2010

Capacity

Service population: 1,163,414

Number of courts: 32

Type of courts: criminal/high security, civil, arraignment

CREDITS

Architect of Record

DesignGroup
Columbus, OH

Design Architect

Arquitectonica
New York, NY

Courts Architect

RicciGreene Associates

Structural Engineer

Shelley Metz Baumann Hawk

Mechanical/Electrical Engineer

Heapy Engineering

Civil Engineer

DLZ Ohio

continued on page 50

GEORGE C. YOUNG U.S. COURTHOUSE AND FEDERAL BUILDING

ARCHITECT'S STATEMENT

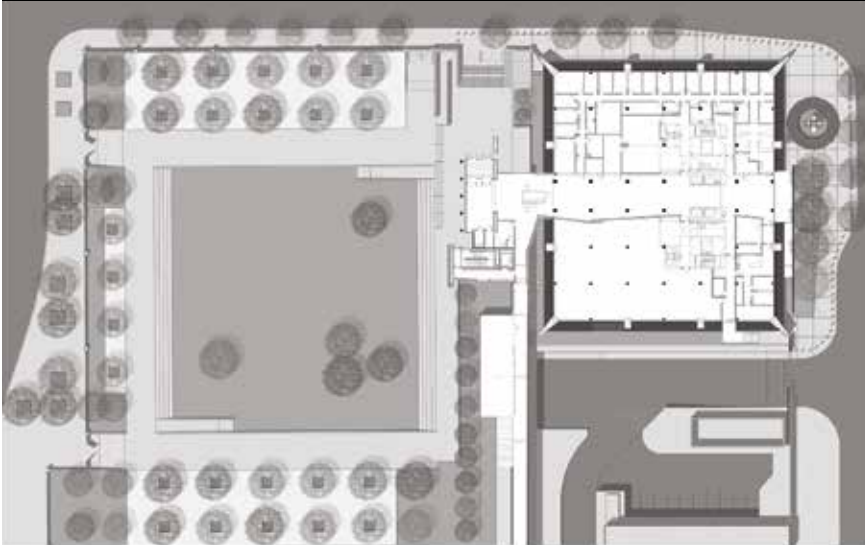
The modernization of the George C. Young Federal Building and Courthouse demonstrates the value of preserving and giving new life to significant civic structures. Today, the Young building stands as a focal point of a revitalized government campus in the growing urban core of downtown Orlando.

Built in 1975, the original building did not provide the separate circulation systems for users that are standard in today's modern courthouse planning. Stripping the interior back to the structure allowed the design team to rethink the floor plan and establish a simple organizing parti based on bringing daylight and views into a deep, existing floor plate. Where program elements occupy the edges, light is brought to the interior through glass partitions or clerestory office windows. The plan achieves openness and transparency and also creates the required secure pathways.

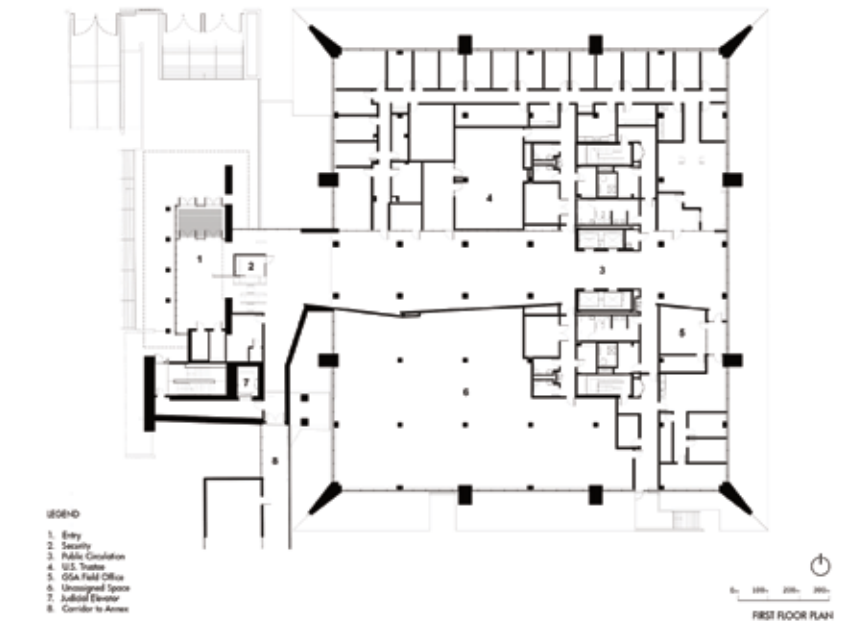
A new entry pavilion and circulation tower highlight the building's exterior transformation while also facilitating secure movement in the building. This addition reorients the entry procession through the existing park on the western half of the site. The Ronald Bladen sculpture *Host of the Ellipse*, which was refurbished and installed on the site as part of the Art in Architecture Program, highlights the building's approach. The elegant proportions of the circulation tower, mirrored by the 35-foot-tall sculpture, create a dynamic exterior setting that anchors the campus within the community.

Funded by the American Recovery and Reinvestment Act (ARRA), the project provides four new bankruptcy courtrooms, four new chambers, and Clerk of Court and U.S. Attorneys spaces. The renovation also focused on energy usage and sustainability. Transforming the existing structure to a high-performance building reduced both energy and water consumption.





Scale: 0' 100' 200' 300'
SITE PLAN



LEGEND
 1. Entry
 2. Security
 3. Public Circulation
 4. U.S. Teller
 5. GSA Field Office
 6. Unassigned Space
 7. Judicial Elevator
 8. Corridor to Annex
 Scale: 0' 100' 200' 300'
 FIRST FLOOR PLAN

OWNER

U.S. General Services Administration Region 4

DATA

Type of Facility

Court

Type of Construction

Addition, renovation

Site Area

71,800 SF

Acres

1.65

Area of Building

New/Renovated/Total GSF
 15,740/188,260/204,000

New/Renovated/Total NAA
 0/153,296/153,296

Construction Costs

Estimated

Site development costs: \$1,408,500

Building costs: \$46,798,940

Total construction costs: \$48,207,440

Building cost/GSF: \$229.36

Project Delivery Type

CM at risk

Funding

ARRA

Status of Project

Completed 2012

Capacity

Service population: 2,781,888

Number of courts: 4

Type of courts: civil, bankruptcy

CREDITS

Architect

DLR Group
 Orlando, FL

Mechanical/Electrical/Plumbing Engineer

John J. Christie & Associates Inc.

Civil Engineer

Klima Weeks Civil Engineering Inc.

Structural Engineer

Master Consulting Engineers Inc.

Landscape

JCR Consulting

Signage

Mari Frith and Associates Inc.

Security/Telecom Audiovisual/Acoustics

Newcomb & Boyd

continued on page 50

JOHN M. ROLL U.S. COURTHOUSE

ARCHITECT'S STATEMENT

The John M. Roll U.S. Courthouse sustainably reinterprets and updates the classic American courthouse. The project, which is targeting LEED® Gold certification, was awarded through a design-build competition sponsored by the General Services Administration's Design Excellence Program. Judge Roll, Arizona's chief federal judge who was killed in the 2011 shooting that wounded Congresswoman Gabrielle Giffords, had been a strong advocate of the project.

Designed to accommodate the large and growing caseload of immigrant detainees along the Arizona-Mexico border, the courthouse delivers streamlined, secure handling of mass defendants. The 60,000-square-foot building houses two courtrooms, judges' chambers, jury rooms, and U.S. Marshals facilities as well as district and bankruptcy court services.

Located near the city's Main Street, the courthouse also offers an outdoor civic space. Twenty-first-century durable materials and technologies have been used to adapt the familiar classical

elements of entablature, colonnade, and portico to the harsh desert climate. A welcoming "front porch" at the entrance is formed by an expansive photovoltaic canopy, held up by naturally weathered steel columns, which generates more than 21% of the building's energy load. The entry procession includes steel bridges spanning a landscaped arroyo (which also functions as a water-retention basin), a stone plinth, and a series of staggered stone site walls.

The principal façade is composed of flanking sandstone masses inset with a double-height glass lobby. The juxtaposition of stone and glass contrasts a magisterial sense of permanence with lightness and transparency, conveying the balance of precedent and openness in the justice system. The east and west faces of the building are shaded by a "living wall," a weathered steel trellis structure supporting vines that provide dappled, controlled sunlight to the perimeter spaces inside.





OWNER

U.S. General Services Administration

DATA

Type of Facility

Court

Type of Construction

New

Site Area

122,000 SF

Acres

2.8

Area of Building

New/Renovated/Total GSF
60,000/NA/60,000

New/Renovated/Total NAA
38,600/NA/38,600

Construction Costs

Estimated
Site development costs: \$3,000,000
Building costs: \$20,000,000
Total construction costs: \$23,000,000
Building cost/GSF: \$383

Project Delivery Type

Design-build

Funding

ARRA, federal government

Status of Project

Under construction
Estimated completion 2013

Capacity

Number of courts: 2
Type of courts: criminal/high security, bankruptcy

CREDITS

Architect

Ehrlich Architects
Culver City, CA

Design-Builder

SUNDT Construction Inc.

Structural Engineer

Caruso Turley Scott

Mechanical Engineer

LSW Engineers Inc.

Civil Engineer

Psomas

Landscape Architect

Ten Eyck Landscape Architects Inc.

Sr. Electrical Designer

LSW Engineers Inc.

Graphics

Bezier CG (renderings)

LAKE COUNTY JUDICIAL CENTER EXPANSION

ARCHITECT'S STATEMENT

The Judicial Center expansion serves as the keystone for a complex of buildings and open spaces on a four-block county government campus. By reorienting the existing judicial building, the new courts facility formally addresses Main Street with a public plaza, providing a formal setting and space for procession. The campus spans both sides of the downtown thoroughfare and incorporates a landscaped traffic circle.

Design inspiration for the courthouse came, in part, from the county's assemblage of public buildings, including the 1922 historic courthouse, the courts annex with its circular atrium, the current judicial building, and the county criminal justice facility. In keeping with this diverse late-20th-century context, the new courthouse is transitional in its planar architecture of brick, glass, and metal yet clearly expressive of today. The material color palette and campus vocabulary have been reinterpreted at new scales and with new forms.

Along Main Street, the southern façade reveals the civic purpose of the courthouse; large windows mark the public lobbies of the court floors. This prominent elevation evokes references to the opposing historic courthouse with its masonry arcaded base, columnar expression, and metallic sunscreen cornice. Sunlight-filled public spaces and courtrooms symbolize the openness and impartiality of the judicial process and humanize the setting for visitors, judges, and staff.

The courthouse is simply organized: upper-floor public spaces facing Main Street feature six courtrooms, judicial chambers, and jury assembly and clerical functions. These components are anchored by the six-story, precast concrete and glass atrium "tower," which contains the public elevators.





OWNER

Lake County Board of Commissioners

DATA

Type of Facility

Court

Type of Construction

New, renovation

Site Area

453,024 SF

Acres

10.4

Area of Building

New/Renovated/Total GSF
168,026/120,100/288,126

New/Renovated/Total NAA
116,212/95,270/211,482

Construction Costs

Actual
Site development costs: \$1,850,000
Building costs: \$38,099,580
Total construction costs: \$39,949,580
Building cost/GSF: \$226.75 (new)

Project Delivery Type

Construction management

Status of Project

Completed 2013

Capacity

Number of courts: 14
Type of courts: criminal/high security, civil, domestic, juvenile, hearings

CREDITS

Architect

Heery International
Orlando, FL

Interior Design

Heery International

Electrical/Mechanical Engineer

Heery International

Landscape Architect

Heery International

Programming

Carter Goble Lee

Audiovisual/Technology/Acoustics

Newcomb & Boyd

Photographer

Bob Egleston

STANLEY J. ROSZKOWSKI U.S. COURTHOUSE

ARCHITECT'S STATEMENT

The courthouse is a seven-level, 198,000-square-foot facility with five courtrooms (three U.S. district courts and two U.S. bankruptcy courts), a grand jury room, and space to accommodate the future expansion of a sixth courtroom within the facility.

Located in downtown Rockford near a recently constructed detention facility and adjacent to local law enforcement facilities, the courthouse is intended to be a catalyst for the rebirth and redevelopment of the downtown. Facility parking is accommodated in a below-grade, private, secure deck. Public parking is provided off-site.

The site was developed by combining two city blocks into one larger block to accommodate green space and meet the 30-year expansion needs of the facility. The building's core consists of a

five-story, open public atrium and vertical public circulation. This core will serve as the centerpiece of the future expansion, with site area to accommodate an additional six courtrooms by mirroring the six-courtroom plan across the public atrium.

The courthouse contains maximum security court holding facilities operated by the U.S. Marshals Service and tenant/office space for the USMS, the U.S. Attorney's Office, pretrial and probation, U.S. District Clerks, U.S. Bankruptcy Clerks, as well as judicial office space. The courthouse was designed under the GSA's Design Excellence Program and is intended to be a 100-year facility.





OWNER

U.S. General Services Administration

DATA

Type of Facility

Court

Type of Construction

New

Site Area

266,300 SF

Acres

6.1

Area of Building

New/Renovated/Total GSF
198,000/NA/198,000

New/Renovated/Total NAA

105,000/NA/105,000

Construction Costs

Actual

Site development costs: \$6,000,000

Building costs: \$72,800,000

Total construction costs: \$88,000,000

Building cost/GSF: \$416

Project Delivery Type

Design-bid-build, construction management,
CM at risk

Funding

General funds, adequate financing

Status of Project

Completed 2012

Capacity

Number of courts: 5+1 future

Type of courts: criminal/high security, civil,
district, bankruptcy

CREDITS

Architect

Dewberry Architects Inc.
Peoria, IL

Associate Architect

Koetter Kim & Assoc. Inc.
Boston

**Structural/Mechanical/Electrical/Plumbing/
Fire Protection Engineer**

Dewberry Architects Inc.

**Courts Planning/Tenant Fit-Out/Interior
Design**

Dewberry Architects Inc.

Civil Engineer

McClure Engineering Assoc. Inc.

Landscape Architect

SmithGroup JJR LLC

continued on page 50

SUPERIOR COURT OF CALIFORNIA, COUNTY OF KINGS, HANFORD COURTHOUSE

ARCHITECT'S STATEMENT

The city of Hanford, located in the south central San Joaquin Valley region of California, is the county seat of Kings County. The aim of this new court facility is to consolidate all court services and proceedings that occur in the surrounding area into one central location. Existing conditions at each of these facilities affect the operational efficiency of the court system and raise security concerns. The new courthouse brings all elements of the court under one roof in a safe, secure, and operationally efficient environment.

The four-story courthouse is organized around a central atrium space that simplifies way-finding and creates adequate waiting space for high-volume public counters. On the first floor, all public counters are accessed from the atrium. An electronic queuing system is used to control public access to the counter areas. Civil and criminal court clerks are cross-trained to handle all public

inquiries. Two counter areas also can be accessed along the building's exterior. This unique planning feature enhances efficiency by reducing the need for all visitors to proceed through security and enter the building to conduct court business.

Levels two, three, and four feature four courtrooms each. Of the 12 total courtrooms, one is for large ceremonial proceedings. On the second floor, one jury deliberation room serves the civil and family courtrooms. On the upper floors, designated for criminal trials, the ratio of jury rooms to courtrooms increases. The central atrium space gives each courtroom natural light, although daylight and views are controlled for security purposes and to manage the courtroom setting for evidence presentation.





OWNER

Judicial Council of California,
Administrative Office of the Courts

DATA

Type of Facility
Court

Type of Construction
New

Site Area
417,200 SF

Acres
9.577

Area of Building
New/Renovated/Total GSF
160,065/NA/160,065

New/Renovated/Total NAA
104,193/NA/104,193

Construction Costs
Estimated
Site development costs: \$7,474,281
Building costs: \$85,245,043
Total construction costs: \$92,719,324
Building cost/GSF: \$579.26

Project Delivery Type
Single prime contract, CM at risk

Funding
Public bond issue, state revenue bonds

Status of Project
Estimated completion 2015

Capacity
Service population: 152,982
Number of courts: 12
Type of courts: criminal/high security, civil,
domestic, juvenile, hearings

CREDITS

Architect
DLR Group
Orlando, FL

**Architecture/Mechanical/Electrical/Plumbing
Engineer**
DLR Group

Structural Engineer
Buehler & Buehler SE Inc.

Low Voltage Engineer
TEECOM Design Group

Civil Engineer
Cunningham Engineering Corp.

Acoustical Engineer
Acoustical Engineering Consultants

continued on page 50

YUBA CITY COURTHOUSE

ARCHITECT'S STATEMENT

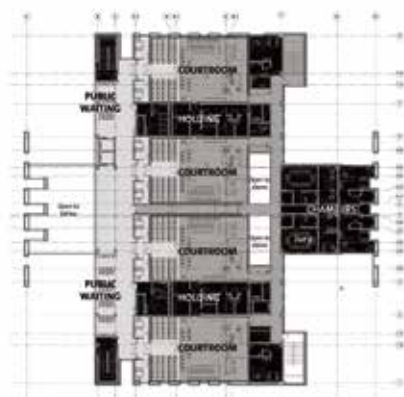
This project forms the centerpiece of Yuba City's developing civic center neighborhood. The design is based on a profoundly simple, cross-shaped building plan that efficiently achieves three critical goals: (1) it provides four strong elevations in a neighborhood context that has no "front" or "back" sides, giving the courthouse a commanding regional presence; (2) it creates four distinctive courtyards that provide spatial amenities for both staff and the visiting public; (3) it evokes the shape and civic presence of Yuba City's historic courthouse, which the court is vacating.

The limited palette of exterior materials includes a perimeter skin of textured porcelain tile, with brighter, crisp, intimate plaster courtyards that appear carved out of the solid surround. These subtractive spaces mitigate the hot climate of California's Central Valley and are sustainably supplemented through strategic building orientation, a self-shading building form, and carefully placed overhangs and shading devices. Throughout the project, landscaping provides a primary focus, softening the presence of the "building as object" and shifting the focus to the social and operational spaces the building affords.





ENTRY LEVEL



THIRD LEVEL

OWNER

Judicial Council of California,
Administrative Office of the Courts

DATA

Type of Facility
Court

Type of Construction
New

Site Area
178,160 SF

Acres
4.09

Area of Building
New/Renovated/Total GSF
73,840/NA/73,840

New/Renovated/Total NAA
46,621/NA/46,621

Construction Costs
Estimated
Site development costs: \$3,724,800
Building costs: \$34,675,200
Total construction costs: \$38,400,000
Building cost/GSF: \$470

Project Delivery Type
Design-bid-build

Funding
Public bond issue

Status of Project
Estimated completion 2014

Capacity
Service population: 94,919
Number of courts: 6 (expandable to 7)
Type of courts: criminal/high security, juvenile, traffic

CREDITS

Architect
RossDrulisCusenbery Architecture
Sonoma, CA

Structural Engineer
Rutherford and Chekene

Mechanical/Electrical/Plumbing/Fire Protection Engineer
WSP Flack + Kurtz

Civil Engineer
Northstar Engineering Group

Landscape
GLS Landscape Architecture

Security
Guidepost Solutions (formerly SafirRosetti)

continued on page 51

U.S. COURTHOUSE, LOS ANGELES (DESIGN COMPETITION)

ARCHITECT'S STATEMENT

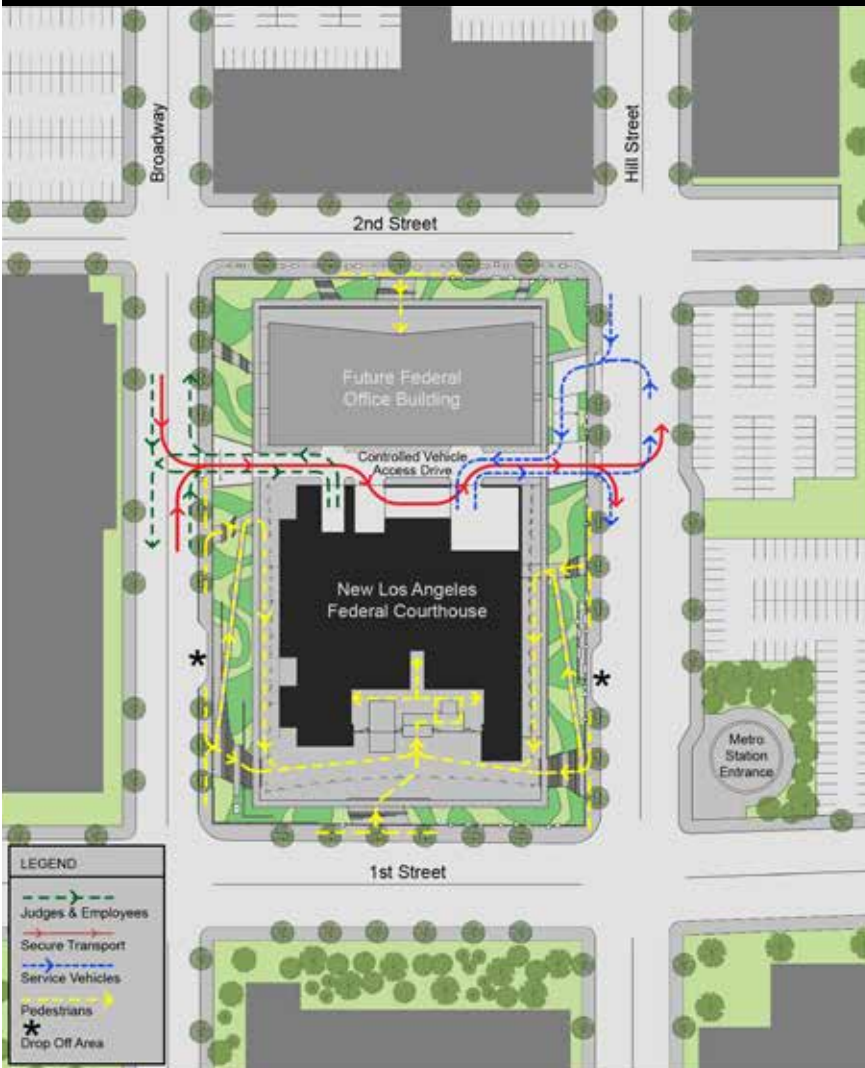
Lady Justice balancing the scales of truth and fairness offers an analogy for the resolution of complex matters. Similarly, the design concept for the Los Angeles Federal Courthouse was guided by a vision to synthesize symbolic and functional objectives into a coherent, relevant, and inspiring composition. The objective was harmonious resolution of multifaceted priorities: advancing the "Guiding Principles for Federal Architecture" and design excellence, formulating a courthouse design that captures the spirit of Los Angeles, functional planning, energy efficiency, and safeguarding the public's trust through the responsible use of public assets.

The design of the courthouse tower is distinguished by courtrooms organized two per floor. Each element is informed by a clear architectural narrative: public lobbies facing northeast are transparent and suggest access to all; judicial spaces facing southwest feature sun screens that signify diverse perspectives and a vibrant democracy; and the courtrooms are solid objects affirming the significance of these spaces and the legal proceedings that occur within.

The tower solution for courtrooms and chambers offers important benefits: plentiful courtroom daylight (proven to increase acuity and alertness), panoramic views, and short travel distances from judicial chambers to courtrooms. The travel distance from each chamber door to the nearest courtroom door ranges from 53 feet to 69 feet, with an average distance of just 55 feet, a 13-second journey assuming normal walking pace.

The tower composition rests on a three-story base and asserts clarity, order, and resolution. The architecture of the base captures the spirit of the city with indoor/outdoor spaces, people places, and an informal atmosphere. The one exception to this informality is the entry, which is formally aligned to the portico, lobby, and tower above. Mediating between the tower and base is a portico and trellis, which shade outdoor public spaces, signal the presence of a civic landmark, and frame the public realm below.





OWNER

U.S. General Services Administration

DATA

Type of Facility

Court

Type of Construction

New

Site Area

155,500 SF

Acres

3.6

Area of Building

New/Renovated/Total GSF
545,000/NA/545,000

New/Renovated/Total NAA
365,000/NA/365,000

Construction Costs

Estimated

Site development costs: \$6,000,000

Building costs: \$274,000,000

Total construction costs: \$280,000,000

Building cost/GSF: \$503

Project Delivery Type

Design-build

Funding

General funds

Status of Project

One of four commissioned design-build guaranteed proposals; not selected for construction

Capacity

Service population: 400

Number of courts: 24

Type of courts: criminal/high security

CREDITS

Architect

NBBJ

Seattle

Architecture/Interior Design/EGD

NBBJ

**Mechanical/Electrical/Plumbing/Structural/
Building Envelope Engineer**

Buro Happold

Geotechnical Engineer

Shannon & Wilson

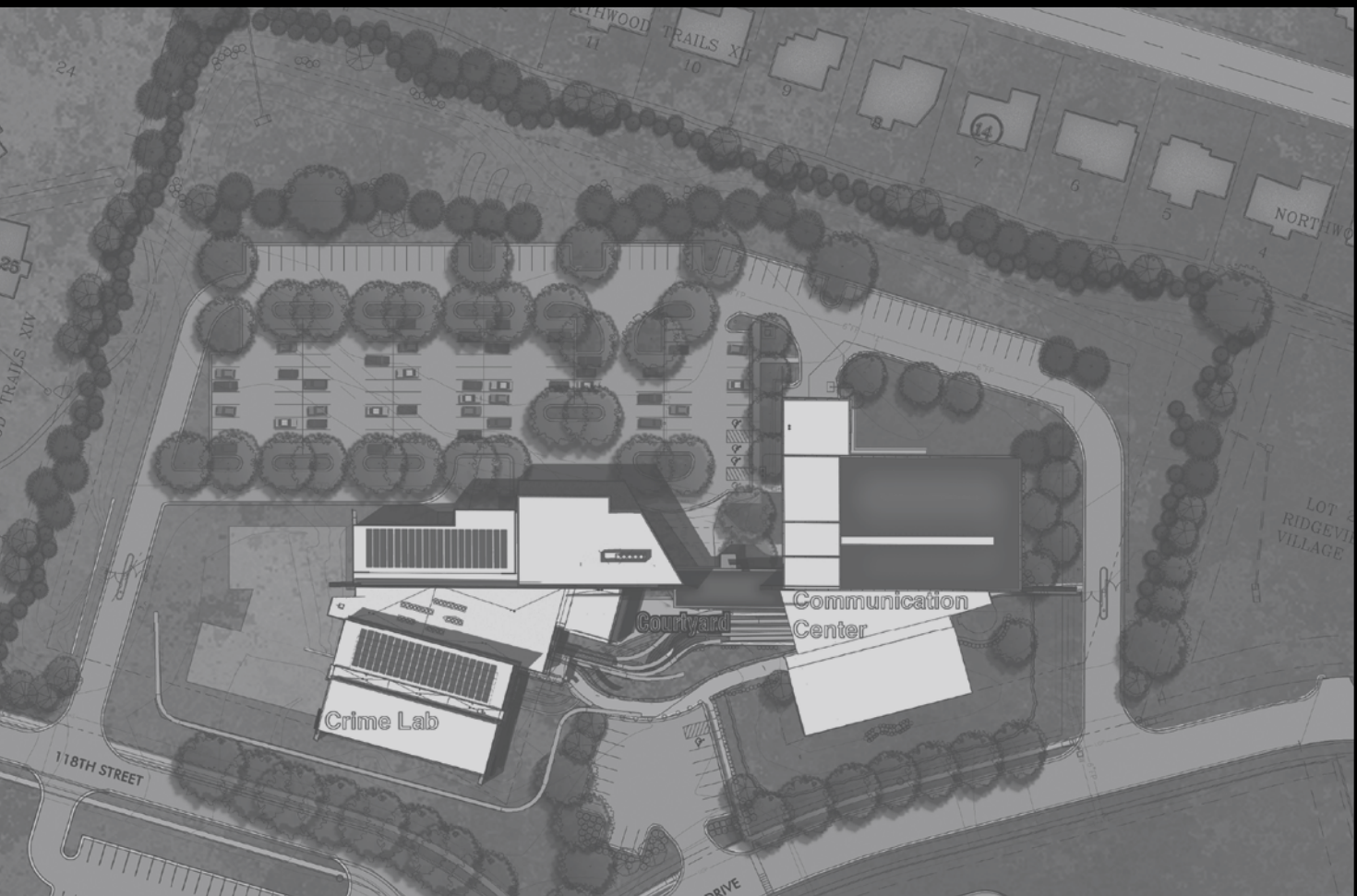
Civil Engineer

Psomas

Fire Protection Engineer

Rolf Jensen & Associates

continued on page 51



LAW ENFORCEMENT FACILITIES



JOHNSON COUNTY SHERIFF'S CRIMINALISTICS LABORATORY

ARCHITECT'S STATEMENT

The 62,500-square-foot lab realizes a new vision for collaborative investigative forensic research and leadership in sustainability. The facility provides law enforcement with specialized forensic research laboratories and collaborative work space for investigators.

The new facility is not a single laboratory, but actually nine distinct laboratory spaces brought together in one building. The nine laboratory spaces (controlled substances, trace evidence, toxicology, biology, latent prints, firearms and tool marks, digital and multimedia, evidence control, and crime scene investigation) reflect the unique needs of each discipline. Careful planning has resulted in spaces specifically designed to maximize efficiency and work flow while maintaining the highest levels of safety and security.

The county continued its commitment to environmental stewardship of county resources by devoting significant resources to the construction and energy efficiency of the building. As a result, it is anticipated that the building will achieve a LEED® Platinum certification.

The new crime lab is co-located with the County Communications Center, a LEED Gold facility. Benefits to both buildings include greater site security, storm water management, secure employee parking, and sustainable landscape and hardscape solutions as well as shared central plant, exercise room, and outdoor courtyard.





OWNER

Johnson County, Kansas

DATA

Type of Facility

Law enforcement

Type of Construction

New

Site Area

414,195 SF

Acres

9.501

Area of Building

New/Renovated/Total GSF
62,500/NA/62,500

New/Renovated/Total NAA
38,750/NA/38,750

Construction Costs

Actual

Site development costs: \$1,250,000

Building costs: \$21,400,000

Total construction costs: \$22,650,000

Building cost/GSF: \$342

Project Delivery Type

Construction management

Funding

Public bond issue

Status of Project

Completed 2012

Capacity

Service population: 552,991

Staff population: 56 (sworn, 28; nonsworn, 28)

Forensics lab: 24,625 SF

CREDITS

Architect

PGAV Architects

Westwood, KS

Mechanical/Electrical/Plumbing Engineer

Crime Lab Design

Structural Engineer

Walter P. Moore

Civil Engineer

Shafer, Kline & Warren Inc.

Landscape Design

Bowman Bowman Novick

Laboratory Programming and Planning

Crime Lab Design

LEED Consultant

Crime Lab Design

continued on page 51

TORONTO POLICE SERVICE 14 DIVISION

ARCHITECT'S STATEMENT

The new divisional building, located in Toronto's historic Dufferin Grove neighborhood, characterized by century-old family residences, is a catalyst for urban revitalization. The Toronto Police Service is committed to the philosophy of community policing, and the design process and the architecture reflect this commitment. Community input was essential to the process, and community representatives served on the Design Committee.

The program called for criminal investigation offices, community policing offices, special project facilities, sally ports, booking and detention facilities, soft and hard interview rooms, training space, administrative offices, and support spaces including lockers, a fitness room, and a lunchroom with outdoor space. Public space includes the main entrance lobby and community room.

A masonry garden wall defines the public zone from the secure zone. The interior and exterior secure functions are within the boundary of the wall, while the publicly accessible spaces (lobby, community

room, community landscape) are outside the wall, connected to the community. Secure parking and detention facilities are located below grade. All secure offices are accommodated in two floors above grade, accessed through a single secure entry off the main lobby. Conceived as a "park pavilion," the main lobby provides clear access to the reception desk and the community room.

The reddish masonry of the landscape wall reflects the materiality of the neighborhood. The stone-clad second floor floats over the masonry wall, establishing continuous clerestory glazing that maximizes natural light in the workplace. Exterior materials are continued in the entrance lobby and community room, reinforcing the connection to the community landscape. Other interior materials were selected for durability and ease of maintenance. The building is targeting LEED® Silver and includes geothermal heating and cooling and green roofs.





OWNER

Toronto Police Service

DATA

Type of Facility

Law enforcement

Type of Construction

New

Site Area

73,748 SF

Acres

1.693

Area of Building

New/Renovated/Total GSF
117,369/NA/117,369

New/Renovated/Total NAA
69,714/NA/69,714

Construction Costs

Actual

Site development costs: \$3,150,000

Building costs: \$25,070,000

Total construction costs: \$28,220,000

Building cost/GSF: \$213

Project Delivery Type

Design-bid-build

Funding

General funds

Status of Project

Completed 2012

Capacity

Staff population: 380 (sworn, 350; nonsworn, 30)

Forensics lab: 1,300 SF

CREDITS

Architect

Stantec Architecture Ltd.
Toronto, Ontario

Civil Engineer

Stantec

Structural Engineer

Halcrow Yolles

Mechanical Engineer

Smith & Andersen

Landscape

gh3

Electrical/IT/Audiovisual

Mulvey & Banani

Environmental

Stantec

Photographer

Richard Johnson



- 1. ENTRANCE LOBBY & COMMUNITY ROOM
- 2. SECURE FACILITY
- 3. SECURE VEHICLE ZONE & ACCESS TO UNDERGROUND PARKING



CREDITS *continued*

WAKE COUNTY DETENTION CENTER

continued from page 23

Structural Engineer

Fleming and Associates PA

Plumbing/Mechanical/Electrical/ Security Engineer

HDR Architecture

LEED AP

HDR Architecture

Sprinkler/Fire Protection

NL Pettit + Associates

Food Service/Laundry

Foodesign Inc.

Cost Estimating

Harris & Associates Construction Consulting

Roofing Consultant

Stafford Consulting Engineering

Commissioning

RMF Engineering

Photographer

Mark Herboth, Herboth Photography Inc.

CHATHAM COUNTY TRIAL COURTHOUSE

continued from page 27

Interior Design

National Office Systems

Cost Estimating

The Strong Group

Court Technology

Dewberry Architects Inc./National Center for States Courts (NCSC)

LEED Consultant

Trident Sustainability Group

Building Envelope Consultant

Simpson Gumpertz & Heger Inc.

Graphics

ArchiBIM (exterior & interior renderings)

FRANKLIN COUNTY COMMON PLEAS COURTHOUSE

continued from page 29

Landscape Architect

MKSK (formerly Kinzelman Kline Gossman)

Security

Professional Systems Engineering

Court Technology

Polysonics Corporation

Elevator Consultant

Lerch Bates

Code Consultant

Code Consultants, Inc.

Cost Estimating

John A. Forgos & Associates

Photographer

Brad Feinknopf/Feinknopf Photography

GEORGE C. YOUNG U.S. COURTHOUSE AND FEDERAL BUILDING

continued from page 31

Contractor

Skanska

Photographer

Mark Boisclair Photography Inc.

STANLEY J. ROSZKOWSKI U.S. COURTHOUSE

continued from page 37

Security/Technology Consultant

Dewberry Architects Inc.

Cost Estimator

Dewberry Architects Inc.

Code Consultant

Rolf Jensen & Assoc. Inc.

Acoustics/Audiovisual Consultant

Polysonics Corp.

Blast Engineering Consultant

Hinman Consulting Engineers

LEED Consultant

SSR Cx LLC

Construction Manager at Risk

Caddell Construction Inc.

Photography

Ballogg Photography Inc.

Graphics

Dewberry Architects Inc. & Koetter Kim & Assoc., Inc. (renderings)

SUPERIOR COURT OF CALIFORNIA, COUNTY OF KINGS, HANFORD COURTHOUSE

continued from page 39

Landscape Architect

The HLA Group

Construction Manager

Sundt Construction Inc.

Signage

Square Peg Design

Graphics

DLR Group (renderings)

YUBA CITY COURTHOUSE

continued from page 41

Acoustics/Audiovisual

Charles M. Salter Associates Inc.

Sustainable Design

Simon & Associates

Cost

Davis Langdon

Elevator

Syska Hennessy Group Inc.

Waterproofing

Simpson Gumpertz and Heger

Environmental Design

Treadwell & Rollo, A Langan Company

Specifications Writer

DTR Consulting Services

Signage

Square Peg Design

Graphics

RossDrulisCusenbery Architecture (renderings)

U.S. COURTHOUSE, LOS ANGELES (DESIGN COMPETITION)

continued from page 43

Blast Engineer

Hinman Consulting Engineers

Lighting

Buro Happold

General Contractor

Mortenson

Elevator Consultant, AEC

Greenbush Consulting

Audiovisual Design

Veneklasen Associates

Security/Hardware/Telecom Consultant

TransTech Systems

Graphics

NBBJ (renderings)

JOHNSON COUNTY SHERIFF'S CRIMINALISTICS LABORATORY

continued from page 47

Peer Review Building Envelope Consultant

Heitman Associates

Acoustics/Audiovisual Communications

Coffeen Fricke & Associates Inc.

Cost Estimating

Construction Management Resources Inc.

Commissioning Agent

Virocon

Geotechnical

Terracon

Photographer

Michael Robinson

INDEX OF ARCHITECTS

Arquitectonica

Franklin County Common Pleas Courthouse (Design Architect) 28

Barnard Architects

Chatham County Trial Courthouse (Associate Architect)..... 26

CGL Companies

New Model Prison for Mexico's Federal Penitentiary System..... 20

DesignGroup

Franklin County Common Pleas Courthouse (Architect of Record)..... 28

Dewberry Architects Inc.

Chatham County Trial Courthouse (Design Architect/Architect of Record)..... 26

Stanley J. Roszkowski U.S. Courthouse (Architect)..... 36

DLR Group

George C. Young U.S. Courthouse and Federal Building 30

Superior Court of California, County of Kings, Hanford Courthouse..... 38

Ehrlich Architects

John M. Roll U.S. Courthouse..... 32

Heery International

Lake County Judicial Center Expansion 34

HDR Architecture

Wake County Detention Center, Phase 2 Expansion (Associate Architect) 22

HMC Architects

San Diego County Women's Detention Facility (Associate Architect) 10

HOK

Richard E. Arnason Justice Center 6

KMD Architects

San Diego County Women's Detention Facility (Architect/Architect of Record)..... 10

Koetter Kim & Assoc. Inc.

Stanley J. Roszkowski U.S. Courthouse (Associate Architect)..... 36

Little Diversified Architectural Consulting

Wake County Detention Center, Phase 2 Expansion (Architect/Prime Architect of Record)..... 22

NBBJ

U.S. Courthouse, Los Angeles (Design Competition) 42

NORR Limited Architects and Engineers

Waterloo Region Courthouse..... 14

Parkin Architects Limited

Rankin Inlet Healing Facility, Nunavut Territory 2

PGAV Architects

Johnson County Sheriff's Criminalistics Laboratory 46

RicciGreene Associates

Franklin County Common Pleas Courthouse (Courts Architect)..... 28

RossDrulisCusenbery Architecture

Yuba City Courthouse 40

Stantec Architecture Ltd.

Toronto Police Service 14 Division..... 48



THE AMERICAN INSTITUTE OF ARCHITECTS